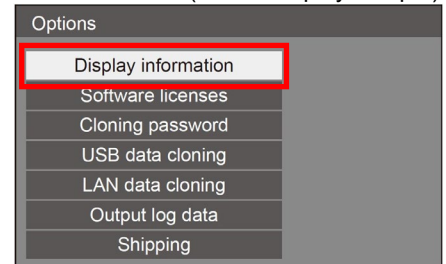


# TH-43/50/55/65/75/86EQ1 series Main firmware update Procedure

## Applicable models

TH-43/50/55/65/75/86EQ1\*

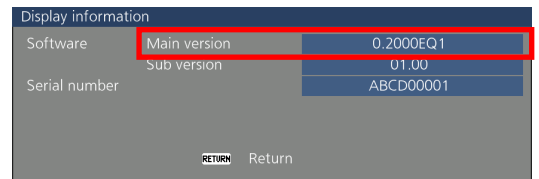
(This is display sample)



## 1. Checking the Main firmware version

### 1-1. Checking procedure

1. When the display is turned on, press the <SETUP> button on the remote control and [Setup] menu screen is displayed.
2. Select the [Options] with ▲▼ and press the <ENTER> button.
3. Select the [Display information] with ▲▼ and press the <ENTER> button.
4. Confirm the "Main version".



## 2. Preparation

### About Firmware update

The firmware update can be performed by "Wired LAN cable connection".

### 2-1. Requirements for update

The condition bellow is required for update.

#### • A computer that meets the following criteria

Successful update is not guaranteed for all computers that satisfies the requirements below.

#### OS: Microsoft Windows® 10

Windows® 10 Pro 32bit/64bit, Windows® 10 32bit/64bit

#### Microsoft Windows® 8.1

Windows® 8.1 Pro 32bit/64bit, Windows® 8.1 32bit/64bit

**CPU:** Required speed for the operating system or higher.

**RAM:** Required size for the operating system or bigger.

**Others:** LAN terminal (RJ-45)

Display :1024 x 768 pixel, High Color (16bit) or high resolution

- Successful update is not guaranteed without the required system or with a self-built computer.
- Microsoft® and Windows® are registered trademarks or trademarks of Microsoft Corporation in the United States and other countries.

#### • LAN cable (Straight or Cross type \*)

\* About cable type, refer to the "3-1 Connection".

- [Note] The following conditions may cause the failure of the firmware updating.  
Please retry after changing the software setting or the [Power option] setting.
- Any security (firewall) or LAN adapter software are installed to the computer.
  - Other application software that starts and runs during updating.
  - Some combination of the setting of the [Power option] setting for windows®.
  - "Resume mode" or "Suspend mode" start while updating.

### 2-2. Preparation for Firmware

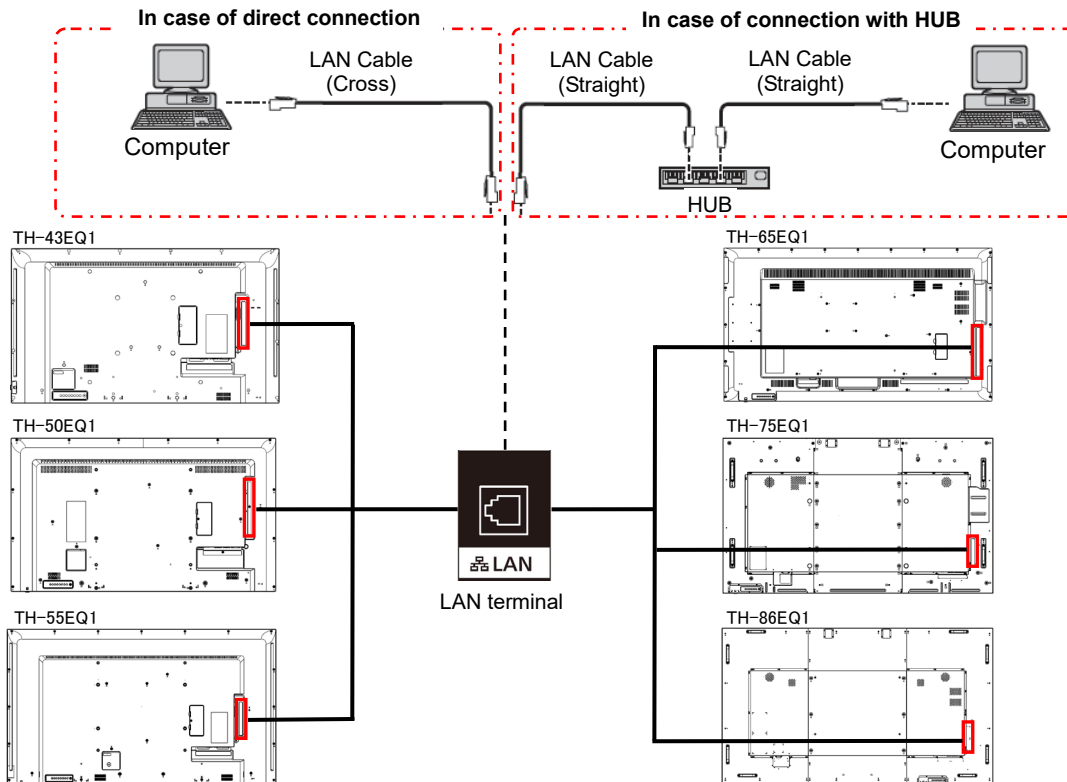
- Download "Firmware update tool" for TH-43/50/55/65/75/86EQ1 from PASS Website below.
  - "UpdateTool\_FP\_EQ1\_\*\*\*\*\*.zip" file (for example : UpdateTool\_FP\_EQ1\_V00300.zip)

<PASS Website> <https://panasonic.net/cns/projector/pass/>
- Unzip the downloaded "Firmware update tool".

## 3. Connection and Communication setting

### 3-1. Connection

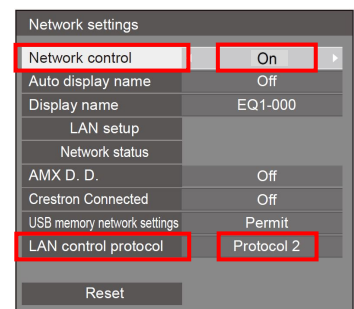
- Connect the display and computer with "LAN cable".



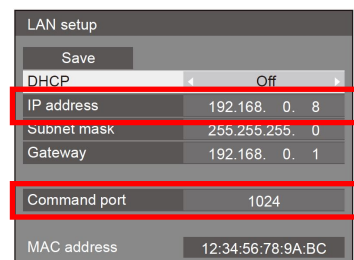
### 3-2. Communication setting

- Open the menu of the display and confirm the communication setting as below.
  - Set the [Network control] to "On" of the [Network settings] menu.
  - Set the [LAN control protocol] to "Protocol 2" of the [Network settings] menu.

[Note] Please return these settings to the original value after updating

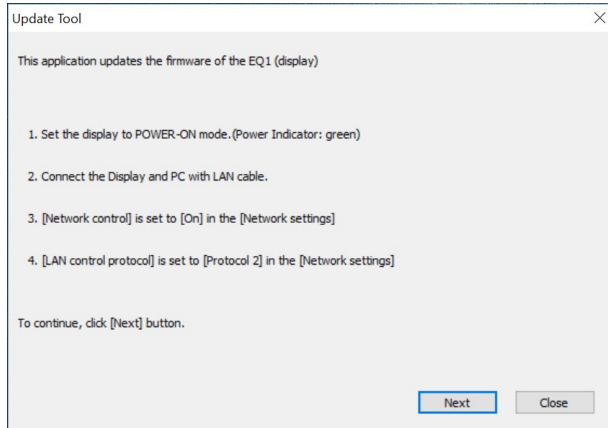


- Confirm the "IP address" and "Command port" in the [LAN setup] of the [Network settings] menu.



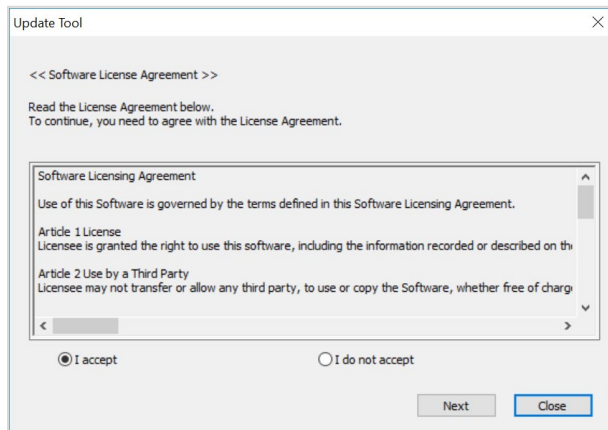
### 4. Main firmware Update Operation

- 1. Double click the "UpdateTool\_FP\_EQ1\_\*\*\*\*\*.exe".  
"Firmware update Tool" is starts and following window will be displayed.



(This is display sample)

- 2. Turn on the display. (Power indicator: Green)
- 3. Confirm the connection of display and computer.  
Click the "Next" button.
- 4. Following "Licence Agreement window" will be displayed.  
Read the "Software Licence Agreement".  
Upon your agreement, check [I accept] and click the [Next] button.



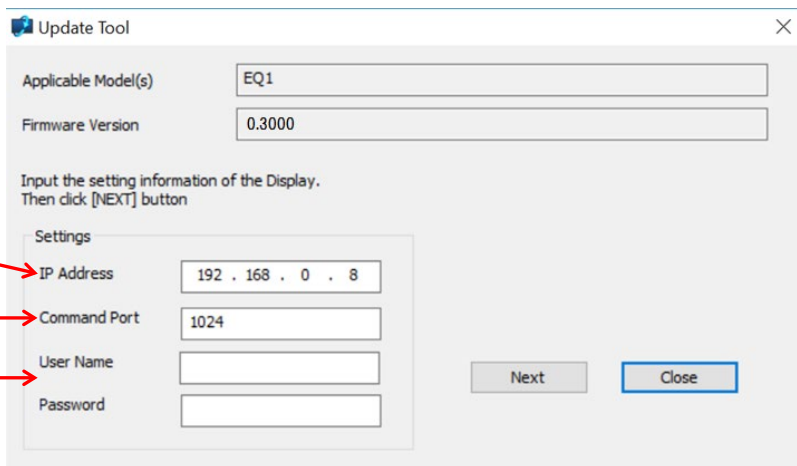
(This is display sample)

- 5. Following window is displayed.  
Set or input the connection setting.

Input the "IP ADDRESS" of display.

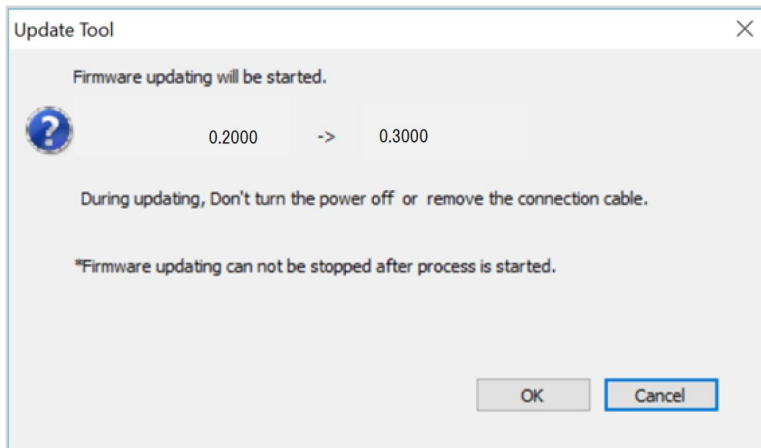
Input the "COMMMAND PORT" of display.

Input "User name (Administrator rights)" and "Password" of display.



(This is display sample)

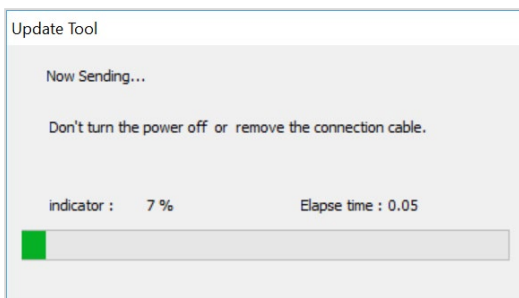
- 6. If setting is completed, click the [Next] button and then the following window will be displayed. It may take a while for the firmware version to be displayed.
- 7. Click the [OK] button and the firmware update will start.
  - \* When any "Error message" is displayed, follow the instruction on the window.



(This is display sample)

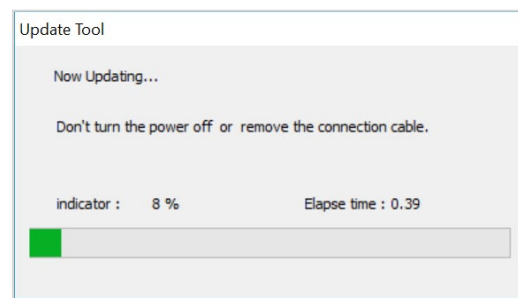
- 8. The following windows will be displayed during the firmware update.
  - Do not disconnect the connection cable or turn off the power during updating.
  - Updating time is approximately 2 minutes.
  - If the display is shut down by power failure or other reasons during updating, re-start the main power of the display and retry.

The display during the firmware sending



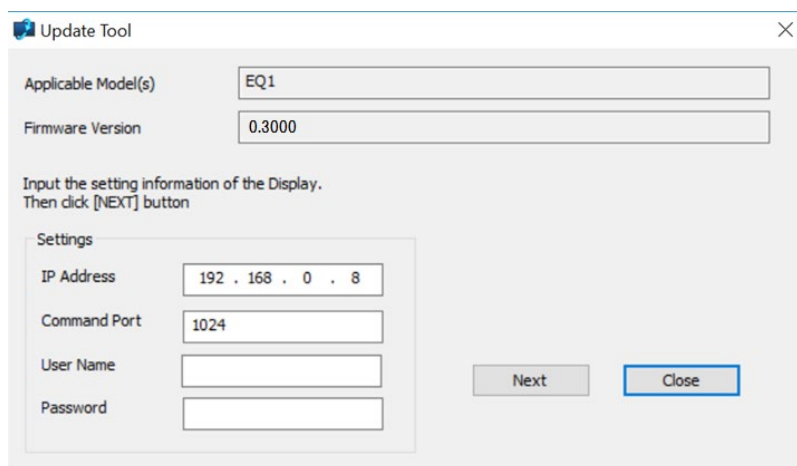
(This is display sample)

The display during the firmware update



(This is display sample)

- 9. The complete message is displayed when the firmware update is completed, and the progress display disappears. The message display will be returned to the following message that before the firmware update start when click [Close] button on the complete message.
  - [Note] The display automatically reset the power and re-start when the firmware update is completed.



(This is display sample)

- 10. Click the [Close] button when close of the update tool. When updating the other displays, go back to step 5.

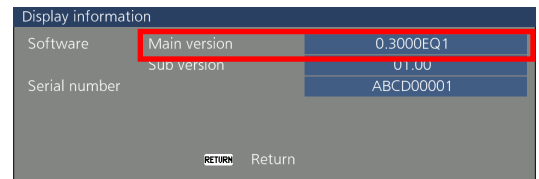
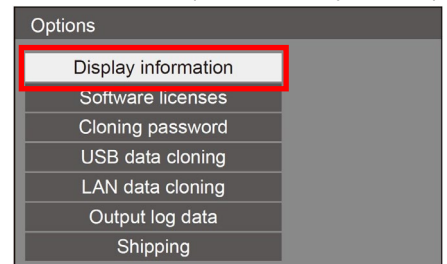
## 5. Confirm the update

Please check the firmware version according to the following procedure.

### 5-1. Main firmware checking procedure

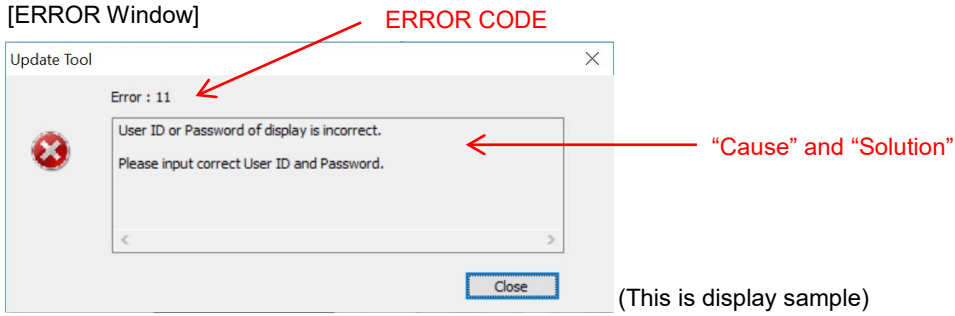
1. When the display is turned on, press the <SETUP> button on the remote control and [Setup] menu screen is displayed.
2. Select the [Options] with ▲▼ and press the <ENTER> button.
3. Select the [Display information] with ▲▼ and press the <ENTER> button.
4. Confirm that the “Main version” value is updated.

(This is display sample)



## 6. Error table

[ERROR Window]



ERROR CODE	Status	Cause	Solution
1	-	-	-
2	Error	No response from the display.	Please check the connection and setting between display and computer.
3	Error	This display is not applicable model for this application.	This application cannot update the firmware of this display.
4	Error	The display is not powered on.	Please turn on the display.
5	Error	Data transfer of the firmware has been failed.	Please check the connection and setting between display and computer.
6	Error	The application failed to start up.	Please restart the application after closing other running applications or rebooting the computer.
7	Error	This application is already run by other windows user.	This application can not be run simultaneously.
8	-	-	-
9	Message	The firmware of this display is newer than the firmware of this application.	Update application is not executed. The firmware of this display is not updated.
10	Message	The firmware of this display is the same version as this application.	Update application is not executed. The firmware of this display is not updated.
11	Error	User ID or Password of display is incorrect.	Please input correct User ID and Password.
12	Error	Failure has occurred in the updating process.	Please restart the application after closing other running applications or rebooting the computer.
13	Error	Assigned command port is being used by another application.	Please assign another command port or close the application which uses the assigned command port. And then please restart the update application.
80	Message	Update finished.	Firmware update is completed.