

# PT-MZ770 series Main/Network firmware update Procedure

## Applicable models

PT-MZ770\*/MZ771\*  
PT-SMZ77C

(This is display sample)

STATUS		1/3
PROJECTOR TYPE	PT-MZ770	
SERIAL NUMBER	SW1234567	
PROJECTOR RUNTIME	10000h	
LIGHT RUNTIME	10000h / 10000h	
CONTINUOUS LIGHTING TIME	1h 23m	
MAIN SUB VERSION	1.00	1.00
NETWORK VERSION	1.00	
INTAKE AIR TEMP.	31°C/87°F	
EXHAUST AIR TEMP.	31°C/87°F	
LIGHT TEMP. 1	31°C/87°F	
LIGHT TEMP. 2	31°C/87°F	
SELF TEST	NO ERRORS	
ENTER	SEND E-MAIL	
◀▶	CHANGE	MENU EXIT

## 1. Checking the Main/Network firmware version

### 1-1. Checking procedure

1. When the projector is turned on and the image is projected, press the <STATUS> button on the remote control.
2. Press ◀▶ to switch the page to the first page.
3. Confirm the "MAIN/NETWORK VERSION".

## 2. Preparation

### About Firmware update

The firmware update can be performed by "Wired LAN cable connection".

### 2-1. Requirements for update

The condition bellow is required for update.

#### • A computer that meets the following criteria

Successful update is not guaranteed for all computers that satisfies the requirements below.

#### OS: Microsoft Windows® 10

Windows® 10 Pro 32bit/64bit, Windows® 10 32bit/64bit

#### Microsoft Windows® 8.1

Windows® 8.1 Pro 32bit/64bit, Windows® 8.1 32bit/64bit

**CPU:** Required speed for the operating system or higher.

**RAM:** Required size for the operating system or bigger.

**Others:** LAN terminal (RJ-45)

Display :1024 x 768 pixel, High Color (16bit) or high resolution

- Successful update is not guaranteed without the required system or with a self-built computer.
- Microsoft® and Windows® are registered trademarks or trademarks of Microsoft Corporation in the United States and other countries.

#### • LAN cable (Straight or Cross type \*)

\* About cable type, refer to the "3-1 Connection".

[Note] The following conditions may cause the failure of the firmware updating.

Please retry after changing the software setting or the [Power option] setting.

- Any security (firewall) or LAN adapter software are installed to the computer.
- Other application software that starts and runs during updating.
- Some combination of the setting of the [Power option] setting for windows®.
- "Resume mode" or "Suspend mode" start while updating.

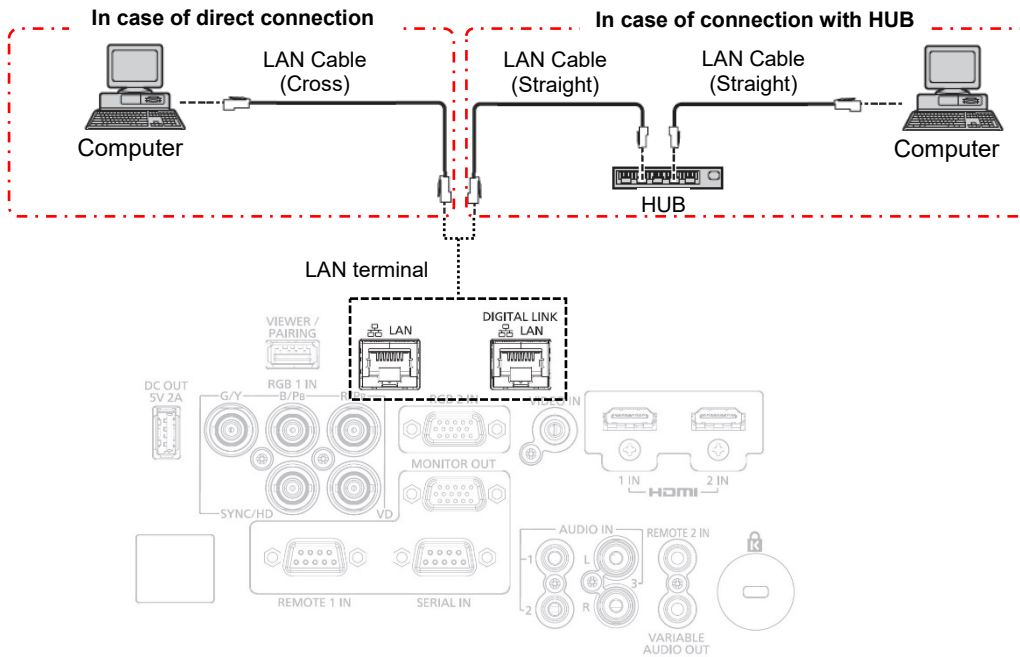
### 2-2. Preparation for Firmware

- Download "Firmware update tool for PT-MZ770 series" from PASS Website below.
  - "FirmUpdateTool\_xxxxxxx.zip" file (for example : FirmUpdateTool\_MZ770\_V105V101.zip)
 <PASS Website> <https://panasonic.net/cns/projector/pass/>
- Unzip the downloaded "Firmware update tool".

## 3. Connection and Communication setting

### 3-1. Connection

- Connect the projector and computer with "LAN cable".



### 3-2. Communication setting

- Open the menu of the projector and confirm the communication setting as below.
- Set the [STAND BY] to "NORMAL".

**Updating with wired LAN**

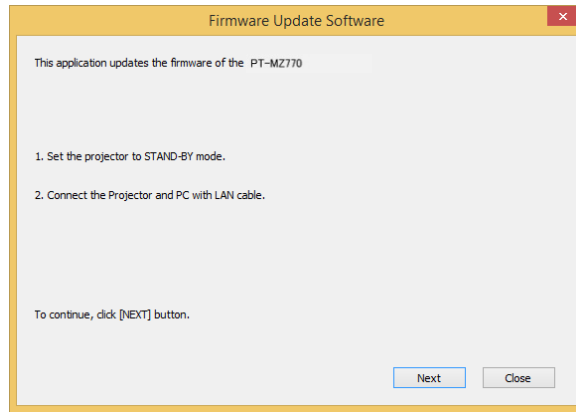
MENU		ITEM
[PROJECTOR SETUP]	[STANDBY MODE]	NORMAL
[NETWORK]	[NETWORK SETUP]	[PROJECTOR NAME]
		[DHCP]
		[IP ADDRESS]
		[SUBNET MASK]
		[DEFAULT GATEWAY]
		[STORE]
	[NETWORK CONTROL]	[COMMAND PORT]
User name (Administrator rights) for Network		
Password for Network		

[Note] Please return these settings to the original value after updating.

### 4. Main/Network firmware Update Operation

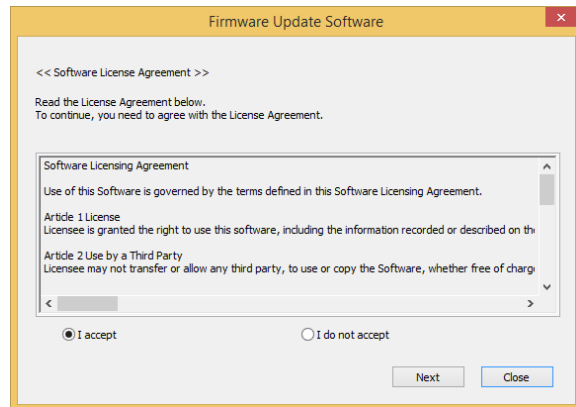
1. Double click the “FirmUpdateTool\_xxxxxxx.exe”.  
“Firmware update Tool” is starts and following window will be displayed.
2. Set the projector to STAND-BY condition.
3. Confirm the connection of projector and computer.  
Click the “Next” button.

[Note] Main/Network firmware of PT-MZ770 series cannot be updated by the serial terminal.



(This is display sample)

4. Following “Licence Agreement window” will be displayed.  
Read the “Software Licence Agreement”.  
Upon your agreement, check [I accept] and click the [Next] button.



(This is display sample)

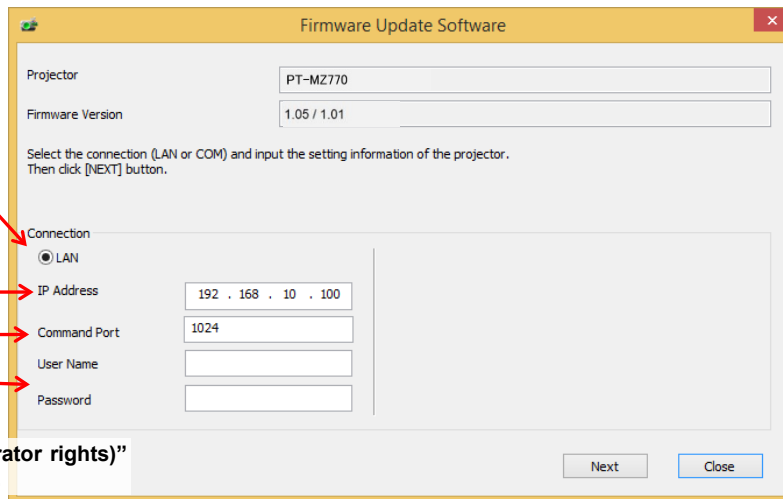
5. Following window is displayed.  
Select the “LAN Connection” and input or set the value you confirmed at 3-2”.

Click this button for selecting “LAN”.

Input the “IP ADDRESS” of projector

Input the “COMMAND PORT” of projector

Input “User name (Administrator rights)” and “Password” of projector.

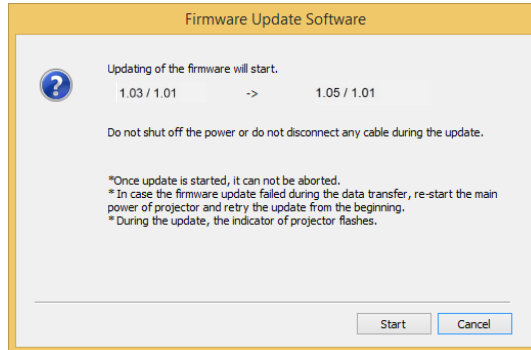


(This is display sample)

6. Click the [Next] button and then the following window will be displayed.

7. Click the [Start] button and the firmware update will start.

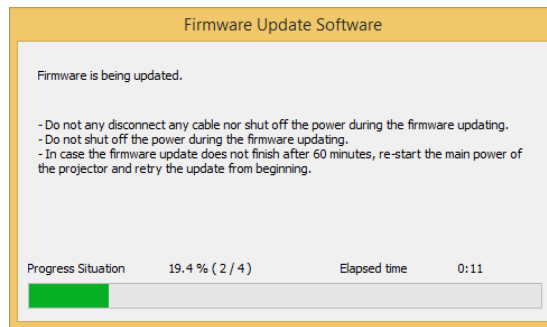
\* When any “Error message” is displayed, follow the instruction on the window.



(This is display sample)

8. The following windows will be displayed during the firmware update.

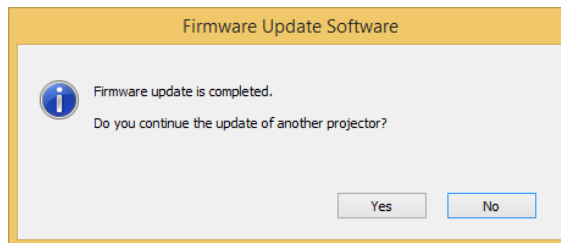
- Do not disconnect the connection cable or turn off the power during updating.
- Updating time is approximately 10 minutes.
- If the projector is shut down by power failure or other reasons during updating, re-start the main power of the projector and retry.



(This is display sample)

9. The following window will be displayed when the firmware update is completed.

Click the [No] button and turn off the power of the projector. Disconnect the connection cable. When you want to continue other projector firmware update, click the “Yes” button.



(This is display sample)

## 5. Confirm the update

Please check the firmware version according to the following procedure.

### 5-1. Main/Network firmware checking procedure

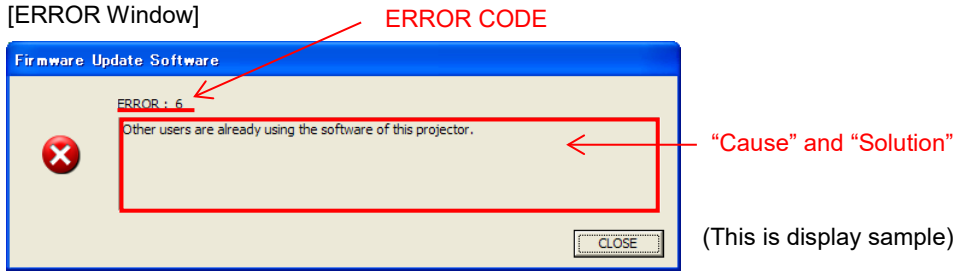
(This is display sample)

1. When the projector is turned on and the image is projected, press the <STATUS> button on the remote control.
2. Press ◀▶ to switch the page to the first page.
3. Confirm that the “MAIN/NETWORK VERSION” value is updated.

STATUS		1/3
PROJECTOR TYPE	PT-MZ770	
SERIAL NUMBER	SW1234567	
PROJECTOR RUNTIME	10000h	
LIGHT RUNTIME	10000h / 10000h	
CONTINUOUS LIGHTING TIME	1h 23m	
MAIN FIRMWARE VERSION	1.05 / 1.00	
NETWORK FIRMWARE VERSION	1.01	
INTAKE AIR TEMP.	31°C/87°F	
EXHAUST AIR TEMP.	31°C/87°F	
LIGHT TEMP. 1	31°C/87°F	
LIGHT TEMP. 2	31°C/87°F	
SELF TEST	NO ERRORS	
ENTER SEND E-MAIL		
◀▶ CHANGE	MENU EXIT	

## 6. Error table

[ERROR Window]



ERROR CODE	Status	Cause	Solution
1	-	-	-
2	ERROR	No response from the projector.	Please check the connection and setting between projector and computer.
3	ERROR	This projector is not applicable model for this application.	This application cannot update the firmware of this projector.
4	ERROR	The projector is not in stand-by mode.	Please set projector in stand-by mode.
5	ERROR	Data transfer of the firmware has been failed.	Please check the connection and setting between projector and computer.
6	ERROR	The application failed to start up.	Please restart the application after closing other running applications or rebooting the computer.
7	ERROR	This application is already run by other windows user.	This application can not be run simultaneously.
8	ERROR	Assigned serial (COM) port is being used by another application.	Please assign another serial (COM) port or close the application which uses the assigned serial (COM) port. And then please restart the update application.
9	INFORMATION	The firmware of this projector is newer than the firmware of this application.	Update application is not executed. The firmware of this projector is not updated.
10	INFORMATION	The firmware of this projector is the same version as this application.	Update application is not executed. The firmware of this projector is not updated.
11	ERROR	User ID or Password of projector is incorrect.	Please input correct User ID and Password.
12	ERROR	Failure has occurred in the updating process.	Please restart the application after closing other running applications or rebooting the computer.
13	ERROR	Assigned command port is being used by another application.	Please assign another command port or close the application which uses the assigned command port. And then please restart the update application.