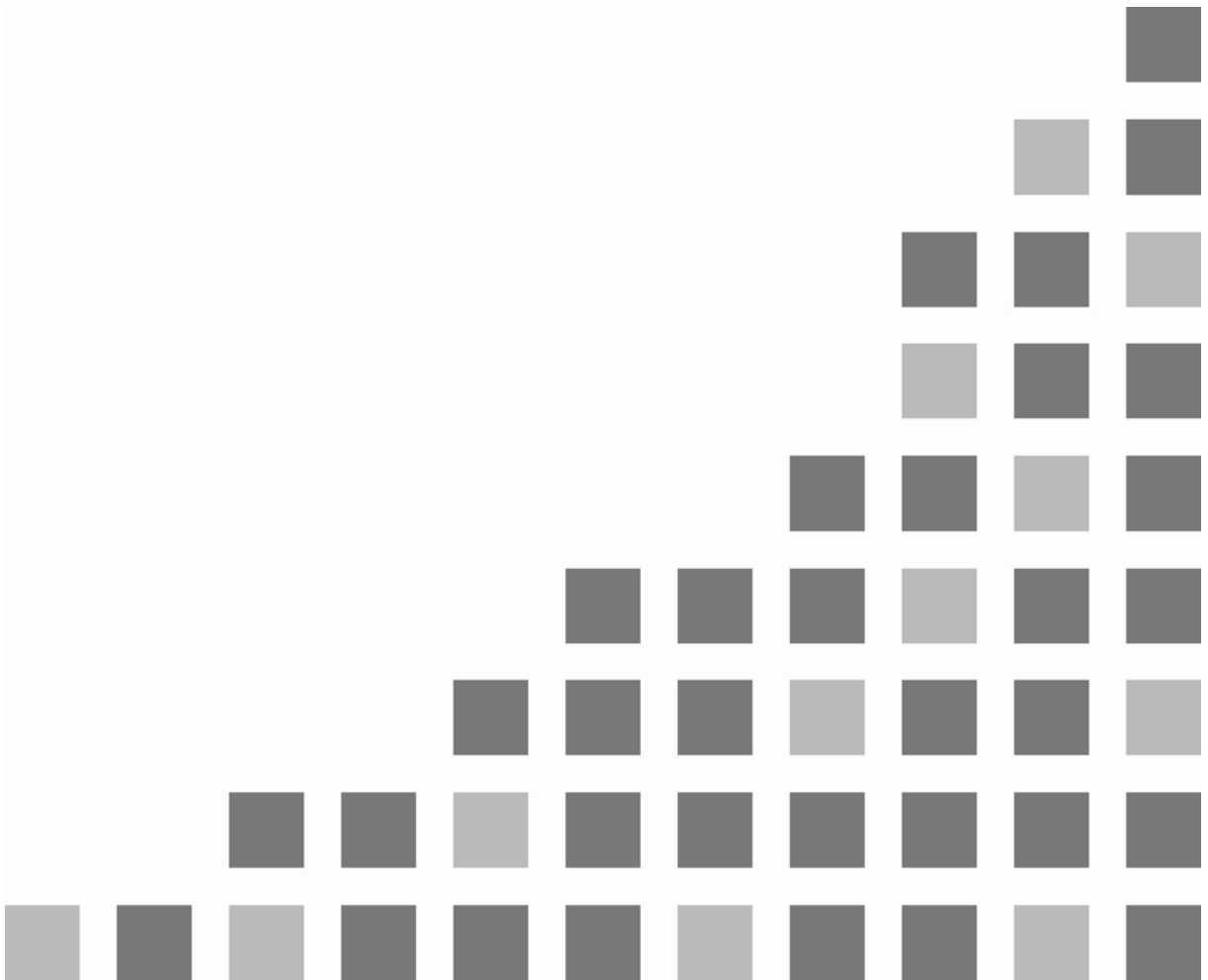


AV-HS410

ClipConvert Software



## Contents

<Overview>.....	3
<Operation environment> .....	3
<How to obtain the ClipConvert Software> .....	3
<How to use the software> .....	3
1. Start up the software. ....	3
2. Converting Targa files into clip files .....	4
2.1. Settings.....	4
① Mode .....	4
② Frame .....	4
③ alpha.....	4
④ Convert from(Targa) .....	5
⑤ Save to(Clp).....	5
2.2. Conversion.....	5
<How to transfer files to the AV-HS410> .....	6

### Trademarks and registered trademarks

- Microsoft®, Windows® XP, Windows Vista® and Windows® 7 are either registered trademarks or trademarks of Microsoft Corporation in the United States and other countries.
- Intel® and Intel® Core™ are trademarks or registered trademarks of Intel Corporation in the United States and other countries.

### Abbreviations

- Both SD memory cards and SDHC memory cards are described as “memory cards” in this manual. When individual descriptions are provided, they are featured individually.

## <Overview>

The AV-HS410 ClipConvert software application is used to convert Targa files containing still image data into clip files (".clp" files) which can be handled as movie data by the AV-HS410.

The clip files created from the Targa files after they have been converted using this software can be registered in the AV-HS410's video memory by copying them onto a memory card and then loading them using the AV-HS410.

## <Operation environment>

A personal computer that satisfies the performance criteria listed below is required in order for the software to run properly.

- Mac operating systems are not supported.

Operating system supported: Windows<sup>®</sup> XP SP2 and up, Windows Vista<sup>®</sup>, Windows<sup>®</sup> 7

CPU: Intel<sup>®</sup> Core<sup>™</sup> 2 DUO 2.4 GHz or faster recommended

Memory: 1 GB or more recommended

## <How to obtain the ClipConvert Software>

The ClipConvert Software can be downloaded from "Service and Support" on the home page whose address is as follows:

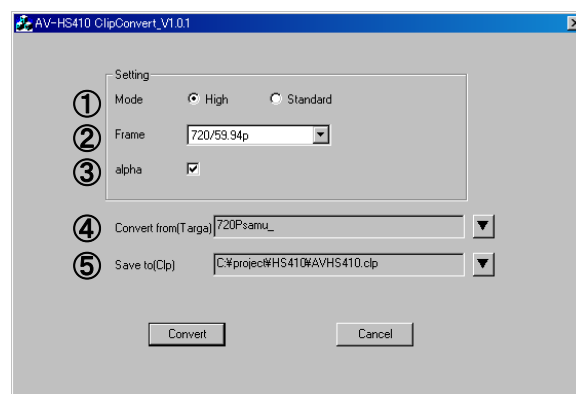
<http://pro-av.panasonic.net/>

1. Download the ClipConvert Software zip file and copy them onto the hard disk of the personal computer.
2. Unzip the downloaded zip file.

## <How to use the software>

### 1. Start up the software.

Double-click "ClipConvert.exe" to start up AV-HS410 ClipConvert.



## 2. Converting Targa files into clip files

### 2.1. Settings

#### ① Mode

The resolution (high or standard image quality) is selected here.

The bit rates are as follows:

**High:** 200 Mbps

**Standard:** 100 Mbps

#### ② Frame

The frame rate is selected here.

Given below is the correspondence between the frame rate setting and the image sizes of the Targa files which can be converted. An error results when an attempt has been made to specify a Targa file with a different image size for conversion.

Whether a Targa file is converted into two fields or one frame will depend on the frame rate.

Frame rate	Image size	Maximum number of files <sup>≈1</sup> (Standard/High)	Conversion method
1080/59.94i	1920 × 1088 <sup>≈2</sup>	600/300	2 fields (breakdown into one even field and one odd field)
1080/50i	1920 × 1088		
576/50i	720 × 576		
480/59.94i	720 × 487 <sup>≈3</sup>		
1080/24psf	1920 × 1088 <sup>≈2</sup>		
1080/23.98psf	1920 × 1088 <sup>≈2</sup>		
720/59.94p	1280 × 720	600/300	1 frame
720/50p	1280 × 720		

≈1: The “maximum number of files” is the maximum number of consecutively numbered Targa files which can be converted by performing one conversion operation.

The number of files is displayed in the Page item in “④ Convert from (Targa)” below.

≈2: Files in the range from 1920 × 1080 to 1920 × 1088 can be imported.


≈3: Files in the range from 720 × 480 to 720 × 487 can be imported.

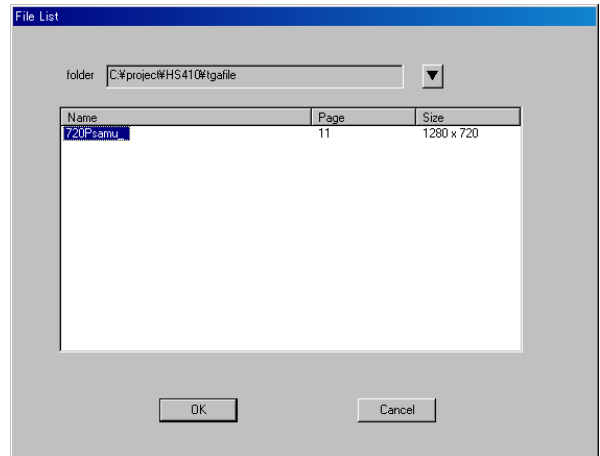
#### ③ alpha

Check this for Targa files with the  $\alpha$  channel.

- Compressed Targa files cannot be used.

**④ Convert from(Targa)**

The Targa file to be converted is selected here. When  is clicked, the File List screen is displayed. Click the Targa file to be converted to select it. When the [OK] button is clicked, the ClipConvert screen is restored. The selected Targa file now appears in Convert from(Targa).




- Name:** The name of the Targa file is displayed here.
- Page:** The number of pages in the Targa file is displayed here.
- Size:** The image size of the Targa file is displayed here.

If the Targa files are numbered consecutively, they are grouped together and the names in front of the numbers are displayed as the filenames. In order to ensure that these files are recognized as consecutively numbered Targa files, a 4-digit number is assigned consecutively ahead of time after the filename before the extension.

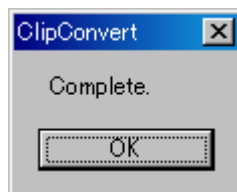
Example:  
 720Psamu\_0001.tga  
 to  
 720Psamu\_0011.tga

**⑤ Save to(Clip)**

The destination where the converted clip file is to be saved is selected here. When  is clicked, the file save screen is displayed. Select the save destination and filename. When a filename with more than 8 characters (excluding the extension) is specified, the filename of the clip file will appear without the ninth and following characters when that file has been loaded in the AV-HS410. As such, it is recommended that filenames be specified using 8 or fewer characters.

**2.2. Conversion**

After entering or selecting the settings in steps ① to ⑤ listed above, conversion is started by clicking on the [Convert] button. If the file is converted successfully, the message screen shown below is displayed.



**<How to transfer files to the AV-HS410>**

Transfer the converted clip files to the AV-HS410 as follows:

3. Have at hand an memory card with a memory size large enough to accommodate the coping of the clip files to be transferred.
  - SDXC memory cards are not supported.
4. Initialize the memory card using the AV-HS410.
5. Insert the memory card that has been initialized using the AV-HS410 into the memory card slot of the personal computer.
6. Copy the converted clip files into the "HS410\CLIP" folder which has been created on the memory card.
7. Insert the memory card onto which the clip files have been copied into the memory card slot of the AV-HS410 again.
8. Press the [VMEM/SD Card] button to light its indicator, and display the SD Card menu.
9. Use [F1] to display the File1 submenu.
10. Use [F2] to select Load in the Mode item and press [F2].  
When [F2] is pressed, a file selection screen is displayed.
11. Use [F1] to select "Clip1" or "Clip2" in the SELECT item.  
The selected channel is the registration destination in the video memory.
12. Use [F3] to select the clip file to be loaded.
13. Use [F4] to load (register) the clip file.

**Notes:**

- For details on how to use or play the clip files that have been registered in "Clip1" or "Clip2," refer to section "1.11 Video Memory" (<Operations and Settings> Operating Instructions).
- If the system version of the AV-HS410 is below V2.00.00, the clip files registered in "Clip1" or "Clip2" will be deleted from the video memory when the power of the AV-HS410 is turned off.