

Panasonic

| P2 Status logger
for windows

USERS GUIDE

The *P2 status logger* is an inspection tool which allows users to performing "easy firmware search" and "automated information update in PASS" by acquiring the log information (Hours meter, firmware versions etc.) from P2HD / AVCCAM equipment and communicating with PASS.

Minimum system requirements

Operating system:	Microsoft Windows 7 Professional 32bit SP1 or later Microsoft Windows Vista 32bit Microsoft Windows XP Professional 32bit SP2 or later
Interface:	USB2.0 port
Other:	Internet connection and web browser

* Microsoft, Windows XP Professional, Vista, Windows7 are registered trademarks of Microsoft Corporation in the United States and other countries

1. Connection and Setting

To acquire data from the P2HD/AVCCAM equipment, connect it between computer in PC (USB) mode. Refer to the operating instructions of the P2HD and AVCCAM equipment how to activate the PC mode.

Activation procedure examples:

P2HD

Connecting AG-HPX170 series camera-recorder

1. Connect the USB2.0 port on the P2HD and the computer with a USB cable.
2. Set “**PC MODE**” item in “**OTHER FUNCTIONS**” to “**USB DEVICE**”.
3. Exit form the menu.
4. Press the **MODE** button once to set the mode from **CAM** to **MCR** mode.
5. Keep pressing the **MODE** button for longer than two seconds to activate the **PC** mode.

* “USB DEVICE” is indicated on the built-in LCD while in PC mode.

AVCCAM

Connecting AG-HMC150 series camera-recorder

1. Mount an SD/SDHC memory card to the AVCCAM and then turn ON the power.
2. Press the **MODE** button once to set the mode from **CAM** to **PB** mode.
3. Keep pressing the **MODE** button for longer than two seconds to activate the **PC** mode.
4. Connect the USB2.0 port on the AVCCAM and the computer with a USB cable.

Connecting AG-HMR10 series portable recorder

1. Disconnect the camera cable from the AVCCAM if connected.
2. Mount an SD/SDHC memory card to the AVCCAM and then turn ON the power.
3. Press the **MODE** button to switch the mode from **REC** mode to **PB** mode.
4. Keep pressing the **MODE** button for longer than two seconds to activate the **PC** mode.
5. Connect the USB2.0 port on the AVCCAM and the computer with a USB cable.

* Check points if USB connection cannot be established.

- Is the camera cable already disconnected?
- Is a SD or SDHC memory card properly mounted?

2. Operating P2 Status Logger

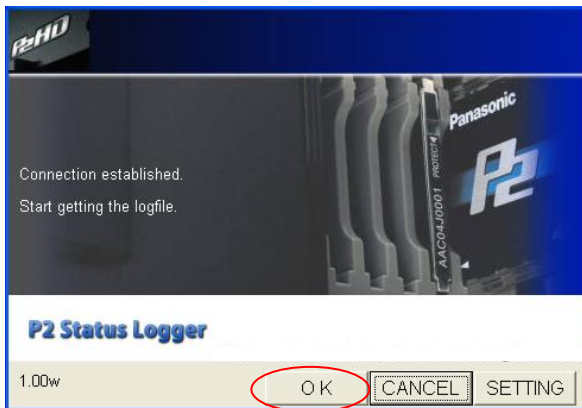
I. Starting P2 Status logger

1. Extract the “P2SL ZIP package” to any location.
2. Execute the “P2StatusLogger.exe” in the extracted folder to start the software.



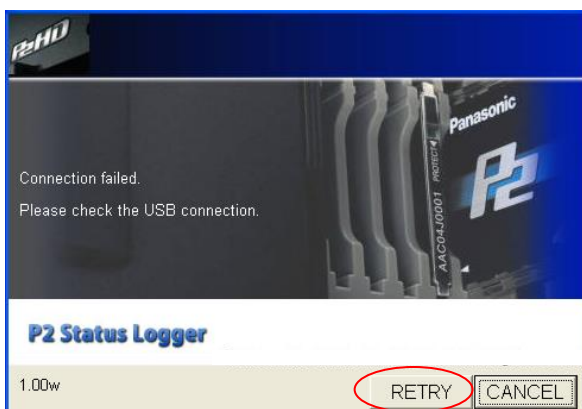
II. Acquiring LOG file from the equipment

3. Make sure that the message “Connection established” is displayed then click OK button.



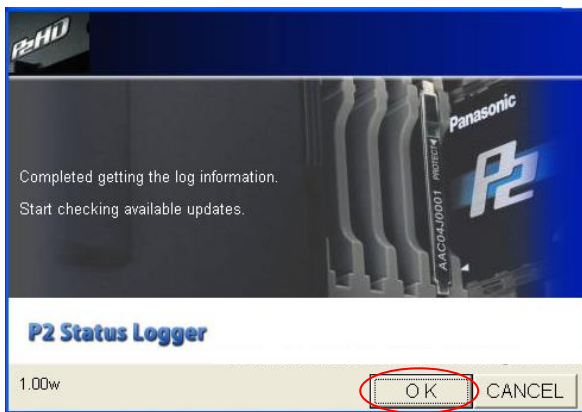
If “Connection failed” error occurred

When this error occurred, check if the USB cable is surely connected and the P2HD/AVCCAM is in USB mode. After checking, click “RETRY” button to re-connect.



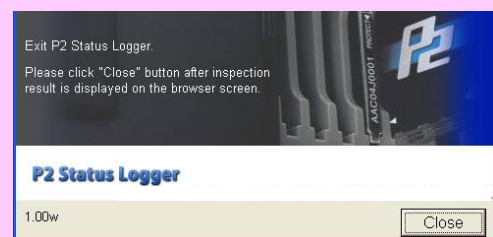
II. Acquiring LOG file from the equipment (continued)

4. Click "OK" button when "Completed getting the log information" message is displayed.

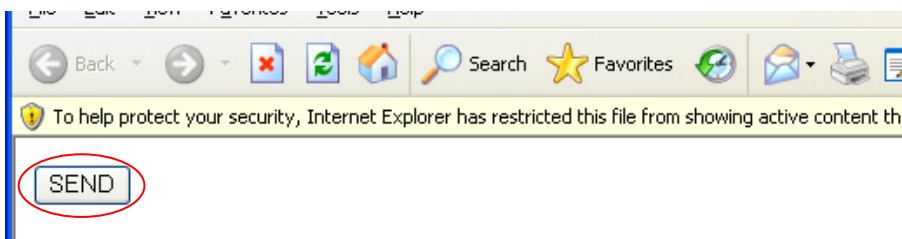


CAUTION

When log acquisition is completed, the software changes a message and a "Close" button appears but Do NOT close the application until the inspection process is completely finished.



5. "P2 Status logger" opens the web browser to transfer the acquired information to PASS, make sure that the PC is connected to the internet and then click "SEND" button to proceed.



* See "Frequently asked questions" at the end of the volume in the case if no browser starts up.

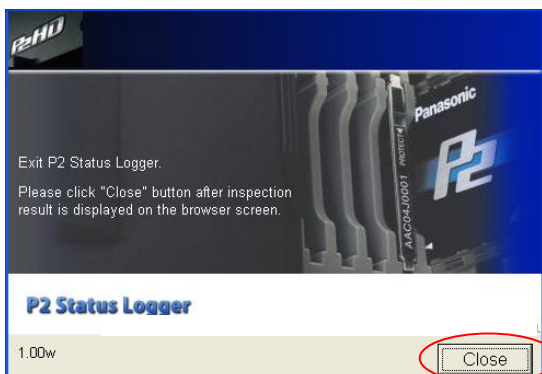
6. Enter your PASS ID (E-mail address) and password when PASS login site appeared.

III. Uploading acquired log file

- The log information acquired from the equipment is saved as “usblog.psl” file in the specified location. * See “Frequently asked questions” at the end of the volume how to change the saving location.
- Specify the file path of “usblog.psl” with the “Browse” button by referring to the “stored log file” field and then click the “Upload” button to transfer the information to PASS via the internet.

- PASS informs the current firmware versions and operated hours etc as the result of inspection. If there is new firmware is available, PASS displays “Download the latest software” button. Click the button to upgrade firmware.

- Click “Close” button to quit the software.



After completing firmware upgrade

Connect the equipment with P2 Status logger again to check if upgrade was successfully finished.

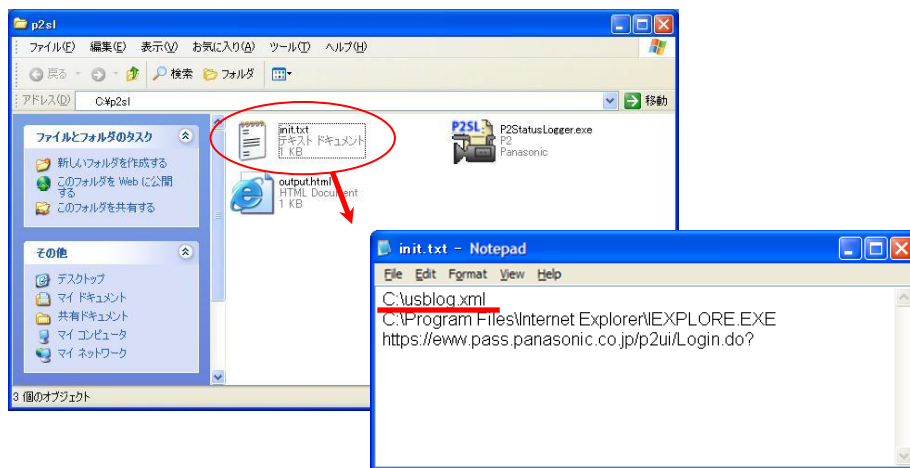
Frequently asked questions

➤ How can I change the saving location of the log files?

1. Open “init.txt” which is locating with the same directory as “P2StatusLogger.exe”.
2. The 1st line in the text file specifies its saving location, default setting is “C:\usblog.xml”.
Enter new location and then save the init.txt. * Do NOT edit other lines.

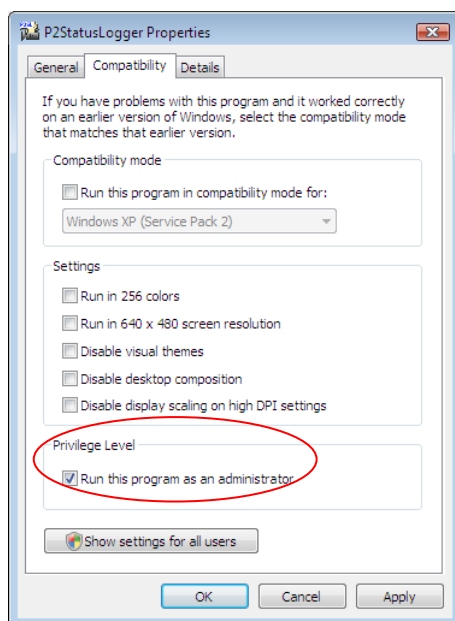
Example: Change the location from “C:\” to “My Documents”.

C:\usblog.xml → C:\Documents and Settings\All Users\Documents\usblog.xml



➤ P2 Status logger does not run on Windows Vista OS

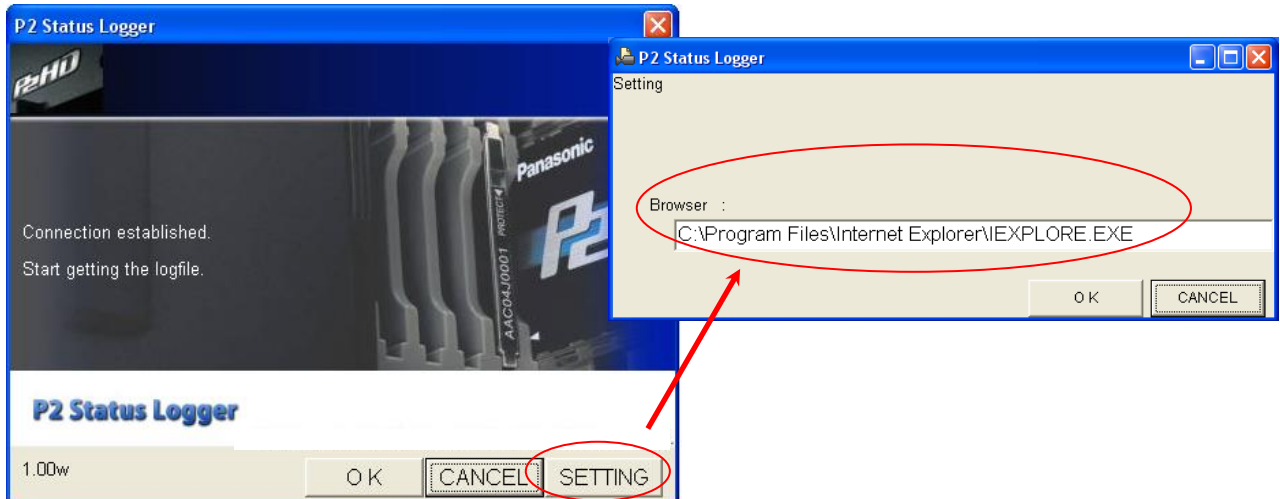
Right click the “P2StatusLogger.exe” icon to open the property, and then check “Run this program as an administrator” option in the “compatibility” tab.



Frequently asked questions (continued)

➤ How can I change the default web browser?

Click “SETTING” button on the window. Enter the full file path of the browser which you want to work with, and then click “OK” button.



➤ Web browser does not open

Check if the file path for the browser is properly specified.

➤ Does the P2SL for Win work on the Windows OS emulator, like a “Boot Camp” for Mac OS?

Sorry, no any emulator including the Boot Camp is qualified. Please use *P2SL for Mac* when you need to inspect your equipment with Macintosh computers.

* Macintosh is registered trademark of Apple Inc. in the United States.