



| P2 status logger
for Macintosh

USERS GUIDE

The *P2 status logger* is an inspection tool which allows users to performing "easy firmware search" and "automated information update in PASS" by acquiring the log information (Hours meter, firmware versions etc.) from P2HD / AVCCAM equipment and communicating with PASS.

System requirements

Operating system:	Mac OS X 10.4, Mac OS X 10.5, Mac OS X 10.6
Platform:	Power PC, Intel Mac
Interface:	USB 2.0 port
Other:	Internet connection and web browser

1. Installation

Installing P2 Status logger application & software driver

* Start up the operating system with an administrator or equivalent account for installation work.

1. Extract "p2sl_mac.zip" to any location, a "p2sl_mac folder" will be appeared.
2. Execute the "P2CamDriver.pkg" located in the "p2sl_mac folder" to install P2 equipment driver which is required recognizing P2/AVCCAM with the P2 Status logger. Please always use the latest driver package (p2camdriver.pkg).
3. Install the P2 Status logger by executing "P2StatusLogger.pkg" in the "p2sl_mac folder".



The "p2_mac folder" appeared after extracted the "P2sl_mac.zip" package

2. Connection and Setting

To acquire data from the P2HD/AVCCAM equipment, connect it between Mac in PC (USB) mode. Refer to the operating instructions of the P2HD and AVCCAM equipment how to activate the PC mode.

Activation procedure examples:

P2HD

Connecting AG-HPX170 series camera-recorder

1. Connect the USB2.0 port on the P2HD and the computer with a USB cable.
2. Set “**PC MODE**” item in “**OTHER FUNCTIONS**” to “**USB DEVICE**”.
3. Exit from the menu.
4. Press the **MODE** button once to set the mode from **CAM** to **MCR** mode.
5. Keep pressing the **MODE** button for longer than two seconds to activate the **PC** mode.

* “USB DEVICE” is indicated on the built-in LCD while in PC mode.

AVCCAM

Connecting AG-HMC150 series camera-recorder

1. Mount an SD/SDHC memory card to the AVCCAM and then turn ON the power.
2. Press the **MODE** button once to set the mode from **CAM** to **PB** mode.
3. Keep pressing the **MODE** button for longer than two seconds to activate the **PC** mode.
4. Connect the USB2.0 port on the AVCCAM and the computer with a USB cable.

Connecting AG-HMR10 series portable recorder

1. Disconnect the camera cable from the AVCCAM if connected.
2. Mount an SD/SDHC memory card to the AVCCAM and then turn ON the power.
3. Press the **MODE** button to switch the mode from **REC** mode to **PB** mode.
4. Keep pressing the **MODE** button for longer than two seconds to activate the **PC** mode.
5. Connect the USB2.0 port on the AVCCAM and the computer with a USB cable.

* Check points if USB connection cannot be established.

- Is the camera cable already disconnected?
- Is a SD or SDHC memory card properly mounted?

3.Operation

I. Starting P2 Status logger

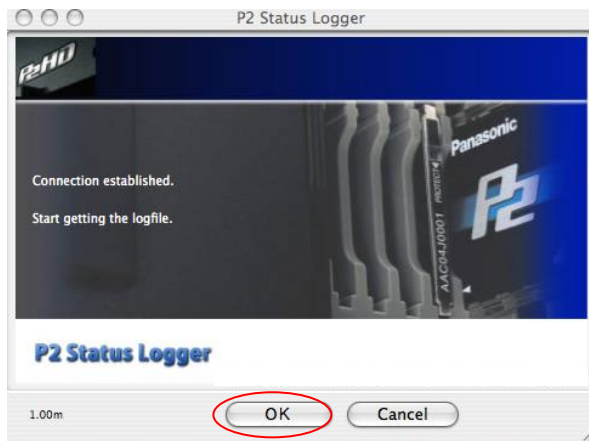
1. Execute the “P2StatusLogger.app” to start the software.



P2StatusLogger.app

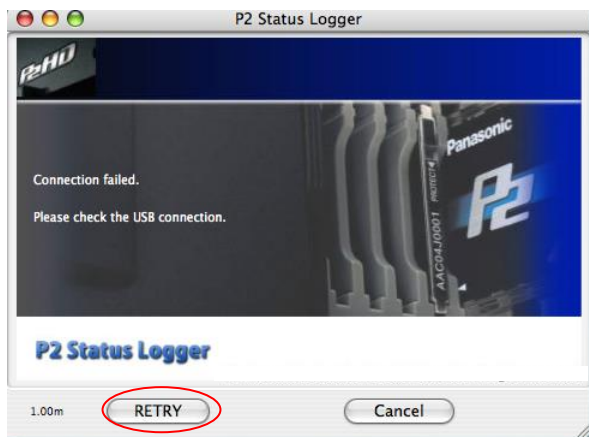
II. Acquiring LOG file from the equipment

2. Make sure that the message “Connection established” is displayed then click OK button.



If “Connection failed” error occurred

When this error occurred, check if the software driver (P2CamDriver.pkg) which comes with the P2 status logger package and/or the P2HD/AVCCAM is in USB mode. After checking, click “RETRY” button to re-connect.



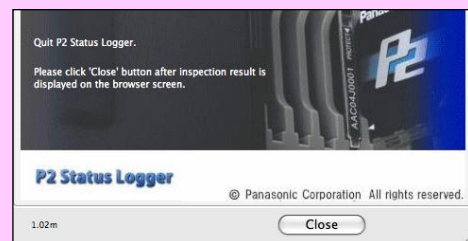
II. Acquiring LOG file from the equipment (continued)

3. Click "OK" button when "Completed getting the log information" message is displayed.



CAUTION

When log acquisition is completed, the software changes a message and a "Close" button appears but Do NOT close the application until the inspection process is completely finished.



4. "P2 Status logger" opens the web browser to transfer the acquired information to PASS, make sure that the Mac is connected to the internet and then click "SEND" button to proceed.



5. Enter your PASS ID (E-mail address) and password when PASS login site appeared.

III. Uploading acquired log file

- The log information acquired from the equipment is saved as "usblog.psl" file.
- Specify the file path of "usblog.psl" with the "Choose File" button by referring to the "stored log file" field and then click the "Upload" button to transfer the information to PASS via the internet.

Upload

Stored log file: /Users/apple/Documents/P2StatusLogger/usblog.psl

Path name and file name: no file selected

The log data is stored in the file shown above. Please locate the file and press the "Upload" button.

- PASS informs the current firmware versions and operated hours etc as the result of inspection. If there is new firmware is available, PASS displays "Download the latest software" button. Click the button to upgrade firmware.

P2 Asset Support System (PASS)

EquipmentList | Update Equipment Profile | Customer Profile | Contact Us

[Return to Top Page](#) | [Download P2 Status Logger](#) | [How to use](#) | [Log Out](#)

Inspection result

Model number: AG-HPG20P | Serial number: ****

Latest version: 8.31-00-0.00-00-0.000
Current version: 8.31-00-0.00 | Last update: 2009/08/24

It is necessary to renew software to customer's product. When the download button is pushed, the latest software is downloaded to the SD card. Please follow the procedure and update it. (The procedure is linked with the update method.)

Hour Meter

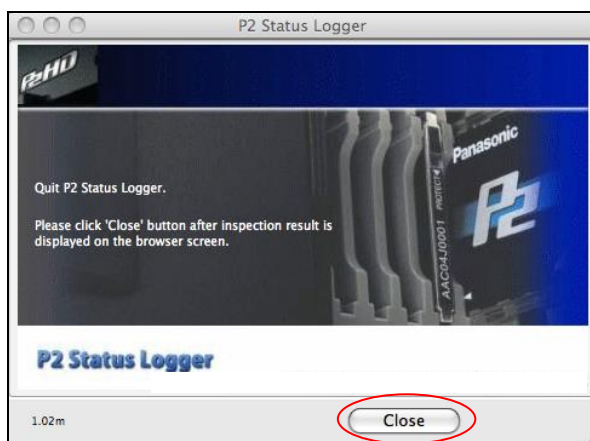
OPERATION	16				
POWER ON	80				
LCD ON	12				

5.00-00-0.00-00-0.000

Advice related to operation

Current hours meter

- Click "Close" button to quit the software.



After completing firmware upgrade

Connect the equipment with P2 Status logger again to check if upgrade was successfully finished.

Frequently asked questions

Question for specification, function...

- **Does the “P2SL for Win” work on the Windows OS emulator, like a “Boot Camp” for Mac OS?**

Sorry, no any emulator including the Boot Camp is qualified. Please use *P2SL for Mac* when you need to inspect your equipment with Macintosh computers.

* Macintosh is registered trademark of Apple Inc. in the United States.

Troubleshooting

- **P2 Status logger does not start up. A P2 Status logger icon bounces in the Dock but nothing happens...**

To start P2 status logger up, “Admin” right is required to the log-in account. Please check if the account logging-in has the Admin light.

- **Occur “Connection failed, please check USB connection” error, even P2HD/ACCCAM is mounted on the desktop.**

Please check if a software driver (p2camdriver.pkg) which comes with P2 Status logger package is surely installed.

Please always use the latest driver package (p2camdriver.pkg).

