

# Panasonic

## User Guide

---

Upgrade Software Key

Model No. **AG-SFU604G**



# Contents

---

<b>Getting Started</b> .....	<b>3</b>
About this document.....	3
About Upgrade Software Key.....	3
<b>Notice regarding security</b> .....	<b>5</b>
<b>Wireless module (Model No.: AJ-WM30): Precautions</b> .....	<b>6</b>
<b>Major operations</b> .....	<b>7</b>
Computer environment required for connection.....	7
Required system configuration.....	7
<b>Preparation</b> .....	<b>8</b>
Attaching the wireless module.....	8
Activating the network function and playlist editing function.....	8
<b>Setting up the network</b> .....	<b>10</b>
Setting up the LAN configuration for the P2 Cam.....	10
Activating the LAN function.....	11
Setting up LAN configuration for computer/mobile terminal.....	11
Setting up wired LAN for computer.....	16
<b>Connecting to computer/iPad</b> .....	<b>19</b>
Starting up the application from Web browser.....	19
<b>Creating playlist</b> .....	<b>21</b>
Playlist editing functions.....	21
Parts names and functions of the Web application for playlist editing.....	22
Registering to playlist.....	29
Modifying registered events.....	30
Previewing playlists.....	31
Previewing playlists by specifying offset.....	31
<b>Saving playlist to P2 card</b> .....	<b>32</b>
Saving new playlist.....	32
Overwriting playlist.....	32
Deleting playlist file.....	33
Opening playlist file.....	33
<b>Playing back playlist on the P2 Cam</b> .....	<b>35</b>
Playing playlist on the P2 Cam from the beginning.....	35
Previewing playlists with specified offset on the P2 Cam.....	35
<b>Creating a new clip from playlist (edit copy)</b> .....	<b>36</b>
<b>Exporting playlist</b> .....	<b>37</b>
<b>Exiting playlist editing function</b> .....	<b>38</b>
Exiting by turning off the power of P2 Cam.....	38
Exiting using the <USER> button.....	38
<b>Glossary</b> .....	<b>39</b>

## Getting Started

- The SD logo is a registered trademark.
- The SDHC logo is a trademark of SD-3C, LLC.
- Microsoft, Windows, Windows logo, and Internet Explorer are trademarks or registered trademarks of Microsoft Corporation in the United States and other countries.
- This document refers to the following OS (Operating Systems) as “Windows 7” and “Windows 8”.  
Microsoft® Windows® 7 operating system  
Microsoft® Windows® 8 operating system
- Apple, Mac, Mac OS, MacBook, iPad, QuickTime, and Safari are trademarks or registered trademarks of Apple Inc. in the United States and other countries.
- Java and other Java-based marks are trademarks or registered trademarks of Sun Microsystems, Inc. in the United States.
- Wi-Fi and WPA2 are registered trademarks of Wi-Fi Alliance.
- Various names, company names, product names, and other items listed in this instruction manual are trademarks or registered trademarks of their respective companies.

### About this document

- Descriptions in this document are based on the assumption that settings regarding the wired LAN and wireless LAN on the computer and mobile terminals are completed. For how to setup these settings, please contact the manufacturers of the devices you are using.
- Please note that Panasonic cannot take any responsibility regarding any damages caused by incorrect setting of the network in order to use this function. Please also note that Panasonic cannot take any responsibility regarding any damages caused by using this function.
- Descriptions of Memory Card Camera Recorder operation (hereafter P2 Cam) are based on the assumption that you read through the P2 Cam (Model No.: AG-HPX600 series) operating instructions and fully understood how it operates.
- Phrases in [ ] in this document refer to contents displayed on the P2 Cam menu or on computers and mobile terminals.
- This document describes reference pages as (page 00).

#### ■ About the illustrations in this document

- Illustrations of the P2 Cam itself or the menu screen may be different from how they actually are.

#### ■ About the terms

- Both SD Memory Cards and SDHC Memory Cards are referred to as SD memory cards.
- Memory cards with the “P2” logo are described as “P2 cards”.
- Video data created by one recording operation is called and described as a “clip”.

### About Upgrade Software Key

Upgrade Software Key AG-SFU604G enables the playlist editing function of the P2 Cam AG-HPX600 series. To use the playlist editing function, activating the optional AG-SFU601G (optional function for network connection) is also required.

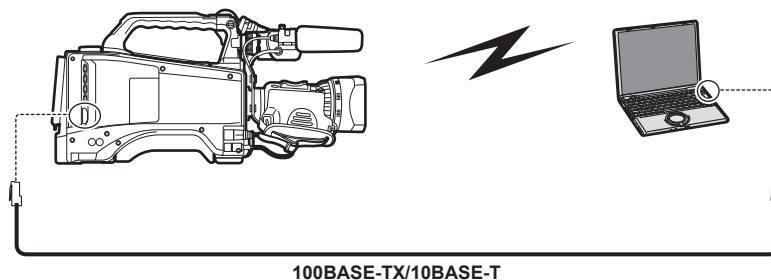
Wired LAN supports 100BASE-TX/10BASE-T.

Wireless LAN supports IEEE802.11g and IEEE802.11n.

- Editing/saving playlists
- Creating a new clip from playlist (edit copy)
- SDI playback using playlists
- Viewing/editing metadata
- Adding/deleting metadata (shot mark/text memo)

### NOTE

- When you connect the to wireless LAN, the optional wireless module (Model No.: AJ-WM30) is required. Do not attach a commercially available wireless module.
- When you use the playlist editing function, check if there remains enough disk memory capacity on the terminal device before operating the function.
- When you use the playlist editing function, the optional video encoder board (AG-YDX600G) is required.



- For connection to the LAN terminal, use a shielded cable.
- When you disconnect a LAN cable, turn off the power of the P2 Cam.

#### ■ Compatible models

P2 Cam: AG-HPX600 series

#### ■ About the key code

- Because the key code is required for re-registration of this product, keep it in a safe place together with the associated P2 Cam serial number.

### ■ About the P2 Cam firmware

- If the firmware version of the AG-HPX600 series device is 18.05-00-0.00 or older, firmware update is required to enable the playlist editing function. For the up to date firmware information, see the P2 support page on the following website.  
English: <http://pro-av.panasonic.net/>
- Refer to “Updating the camera firmware” (Chapter 10) in the operating instructions of the AG-HPX600 series device for the procedure of firmware update, to perform update.

## Notice regarding security

---

When using this product, you may encounter the following damages.

- Leaking of customer privacy via this product
  - Illegal operation of this product by malicious third parties
  - Interference or stopping of this product by malicious third parties
- Take appropriate security measures for the computer and mobile terminals.

- Limit the users that can log in by setting up passwords.
  - Use passwords that are hard to guess.
  - Change the password periodically.
  - Panasonic Corporation and its affiliate companies will not directly inquire as to a customer's password. Do not give your password in answer to any such direct inquiries.
  - For repair, maintenance, disposal, or transfer of this product, initialize the network settings to prevent leakage of information.
- 

### Caution regarding security when using a wireless LAN product

Wireless LAN can communicate information between computers, etc., and the wireless access point using radio waves instead of LAN cables, which allows you to connect to the LAN anywhere as long as the radio waves can reach. However, radio waves can reach anywhere in their range even through obstacles (walls, etc.). Therefore, it may give rise to the following problems if you do not perform the settings regarding security.

- Interception of communication contents  
Malicious third parties may intercept the radio waves, and private information such as ID, password, or credit card numbers, etc., contents of the mail, may be intercepted.
- Unauthorized invasion  
Malicious third parties may access a private or corporate network without authorization, and steal private information or classified information (leakage of information), release fraud information by impersonating a specific person (spoofing), rewrite and distribute the intercepted contents (falsification), or destroy data or systems by spreading computer viruses (destruction), etc.

The wireless adapters and wireless access points have security mechanisms to deal with these problems, so just by using these settings when using the product will decrease the chance of these problems occurring.

Security settings may not be set up on the wireless LAN equipment at the time of purchase. To reduce the chance of security problems occurring at the user site, make sure to set up all the settings regarding wireless LAN equipment in accordance with the operating instructions of each item of wireless LAN equipment. Also, please note that the security settings may be breached by special methods due to the specification of the wireless LAN.

If you cannot set up the security settings by yourself, when using the P2 Cam (Model No.: AG-HPX600 series) via wireless LAN, please contact the Service Center in your region. It is recommended to use the product fully understanding the risk when the security setting is not set up, and to set up the security setting under judgment and responsibility of the customer.

---

## Wireless module (Model No.: AJ-WM30): Precautions

- Carefully read “Before using” and “Precautions” when using in the Operating Instructions for the wireless module and use after fully understanding the content.
- To avoid mistakes with this product, the following restrictions apply.

Supported specification	IEEE802.11g/IEEE802.11n * IEEE802.11a and IEEE802.11b cannot be used.
Communication frequency	2412 MHz - 2462 MHz (1ch, 6ch, 11ch) * 12ch or higher cannot be used.

### ■ On use abroad

In order to comply with regulations concerning radio wave in various regions of the world, the following four AJ-WM30 models are for sale. Note that none of the products may be used outside the countries or regions that support them.

Product name	Region where it can be used
AJ-WM30MC	Peoples Republic of China
AJ-WM30P	United States of America, Canada, Mexico, Argentina, Peru, Taiwan
AJ-WM30E	EU member nations, EFTA member nations, Australia, New Zealand, Russia, Ukraine, Saudi Arabia, UAE, Kuwait, Oman, Egypt, Republic of South Africa, Republic of Korea, the Philippines, Malaysia, Singapore
AJ-WM30	Japan

### ■ In addition, note the following when used in these countries.

- In France outdoor use is not allowed.

### ■ The wireless module is installed to the back right of the P2 Cam.

Because of this, signal strength is reduced towards the front of the P2 Cam (lens side). When performing tasks requiring high transfer speeds, such as viewing or downloading proxies, please use a computer, iPad, etc., from a position within 45 degrees of the rear of the P2 Cam (battery side).

## Major operations

### Computer environment required for connection

- First, confirm that the wireless LAN or wired LAN function is installed on the computer you are using.
- This does not guarantee operations on all wireless LAN or wired LAN adapters and computers.
- Make sure to confirm the following setting before connecting the wireless module to the computer.

### Check 1: Settings of the wireless LAN

To use the wireless LAN function:

#### ■ Computer with a built-in wireless LAN function

- Is the wireless LAN enabled?

#### ■ Computer without a built-in wireless LAN function

- Is the wireless LAN adapter correctly recognized?
- Is the wireless LAN adapter enabled?
- Install the driver for the wireless LAN adapter in advance.  
For how to install the driver, refer to the operating instructions of the wireless LAN adapter.

### Check 2: Settings of the wired LAN

To use the wired LAN function:

#### ■ Computer with a built-in wired LAN function

- Is the wired LAN enabled?

#### ■ Computer without a built-in wired LAN function

- Is the wired LAN adapter correctly recognized?
- Is the wired LAN adapter enabled?
- Install the driver for the wired LAN adapter in advance.  
For how to install the driver, refer to the operating instructions of the wired LAN adapter.

### Check 3: Settings of the computer

- You may not be able to connect with the P2 Cam when security (firewall) software or utility software for the wireless/wired LAN adapter is installed.
- Is the network bridge set up?
- Is the firewall disabled?

### Required system configuration

A computer that meets the following conditions is required to use wireless/wired LAN.  
This does not guarantee operation with all computers that fulfill the following conditions.

#### ■ Windows

- Microsoft Windows® 7 Professional 32/64 bit  
Microsoft Windows® 8 Professional 32/64 bit

#### ■ Macintosh

- Mac OS X v10.7.x, v10.8.x

#### ■ iPad

- iOS v5.x, v6.x

Refer to the support pages of the following website regarding the latest operation checked version.

English: <http://pro-av.panasonic.net/>

#### NOTE

- Log on to an administrator or standard user account to use this product. This product cannot be used with the Guest user account.

#### ■ About the Web browser

- A Web browser is required to perform Web control.
- Refer to the support pages of the following website regarding the latest supported browsers.  
English: <http://pro-av.panasonic.net/>

#### NOTE

- When entering text, pictograms cannot be entered into the P2 Cam. Do not use pictograms.

#### ■ About the Media Player

- QuickTime is required to preview playlists.
- Refer to the support pages of the following website regarding the latest operation checked version.  
English: <http://pro-av.panasonic.net/>

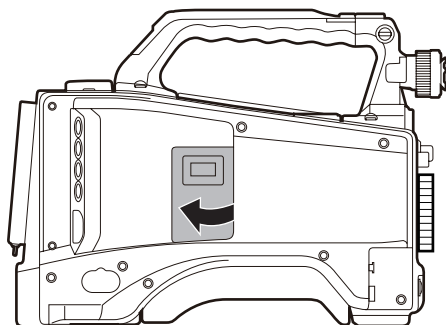
## Preparation

Prepare to connect a computer or iPad to the P2 Cam.

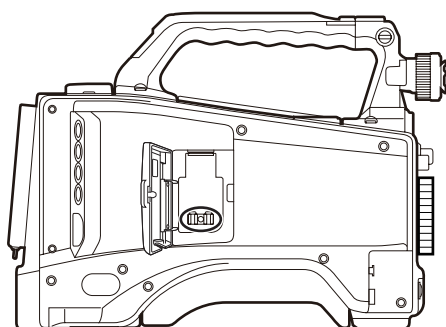
### Attaching the wireless module

To use the wireless LAN function, attach the wireless module using the following procedure.

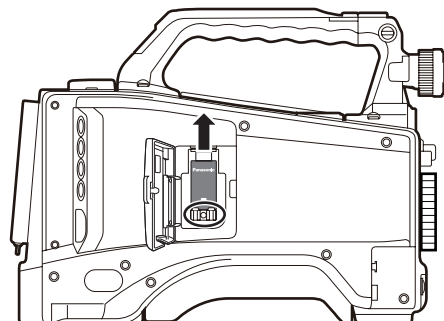
#### 1 Open the door cover of the P2 Cam.



#### 2 Remove the screw of the wireless module mount part.



#### 3 Securely attach the wireless module to the USB port, fasten the screw removed from the wireless module mount part in step 2, and close the door.



#### NOTE

- When using wireless LAN, make sure that the body cover is closed and the wireless module is firmly mounted.

### Activating the network function and playlist editing function

When connecting the P2 Cam with a computer after purchase, activate the function by importing the 30-digit activation code into the P2 Cam main unit. The activation code can be obtained by accessing the site where activation codes are issued, and authenticating the device information exported from the P2 Cam and the key code supplied with the product following the displayed procedure.

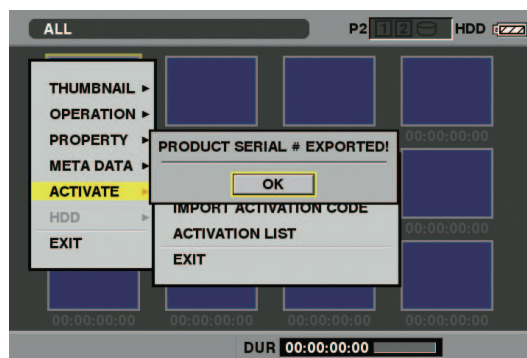
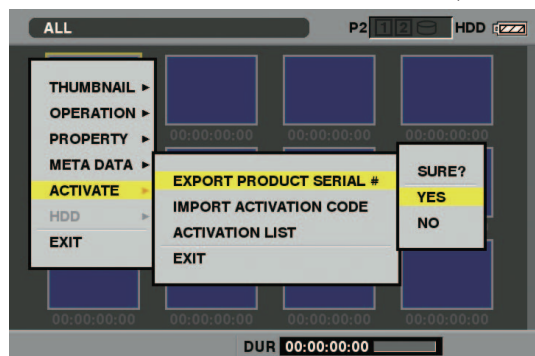
The procedure requires an SD memory card (formatted with the P2 Cam), a computer equipped with an SD memory card slot, and an active Internet connection.

#### NOTE

- If the network function has not been activated, the network-related items are grayed out on the P2 Cam menu.
- To activate the playlist editing function, the optional AG-SFU601G (optional function for network connection) is also required.

#### 1 Export the device information of the P2 Cam to the SD memory card.

Start the P2 Cam, insert the SD memory card, press the <THUMBNAIL> button to open the thumbnail screen, open the menu using the <THUMBNAIL MENU> button, and then select [ACTIVATE] - [EXPORT PRODUCT SERIAL #] - [YES]. The folder, private/meigroup/pavcn/sbg/p2sd/actv/ is created inside the SD memory card and the P2 Cam device information is saved in the file, SERIAL.LST.



Close the dialog display by pressing the <SET> button.

- Device information for a maximum of 100 devices can be stored in one SD memory card by repeating the operations in step 1 for P2 Cam that you want to issue the activation code for. The site that issues the activation code can read all device information for multiple devices stored on the SD memory card, and batch issue activation codes for the multiple devices.
- When an error dialog appears, check insertion of the SD memory card, write inhibit setting, free space, etc.
- It is recommended that you use an SD memory card formatted with the P2 Cam to prevent unexpected errors.

#### 2 Remove the SD memory card from the P2 Cam. Insert it in a computer and connect to the following activation code publication site from a browser. Follow the procedures described in the site to acquire the activation code.

English: [http://panasonic.biz/sav/actkey\\_e](http://panasonic.biz/sav/actkey_e)



**NOTE**

- The private/meigroup/pavcn/sbg/p2sd/actv/ folder created in step 1 will be required in step 3, so do not delete the folder or format the SD memory card.
- When a file named ACTIVE.LST already exists in the private/meigroup/pavcn/sbg/p2sd/actv/ folder of the SD memory card, the file name may automatically change depending on the browser that you are using. Check that ACTIVE.LST does not exist in the folder mentioned above before saving the file.

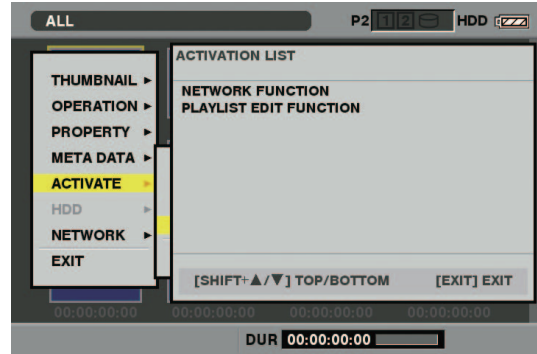
**3** Save the acquired activation code in the private/meigroup/pavcn/sbg/p2sd/actv/ folder of the SD memory card created in step 1 following the instructions from the site, and then remove the SD memory card from the computer.

**NOTE**

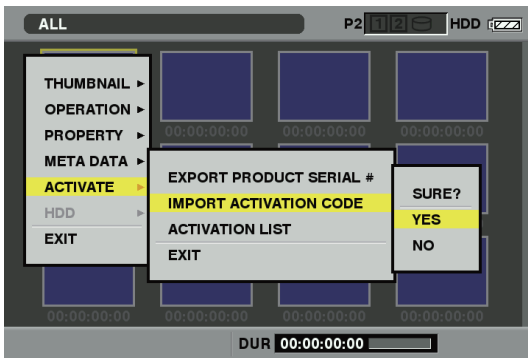
- Depending on the computer and the OS type, some operations may be required before removing the SD memory card.

**4** Insert the SD memory card where the P2 Cam activation code is stored, press the <THUMBNAIL MENU> button, and then select [ACTIVATE] - [IMPORT ACTIVATION CODE] - [YES].

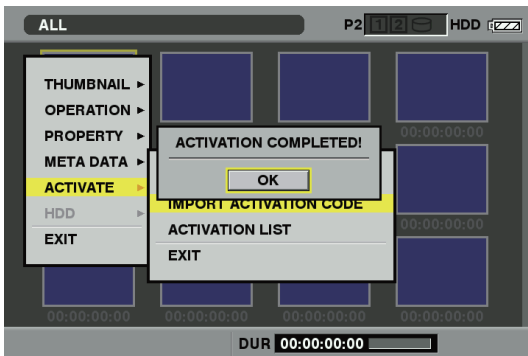
- Activation codes acquired based on information of P2 devices other than the AG-HPX600 series or key codes for other products do not work.
- If you perform other operations on data in the SD memory card in the middle of the process, you may not be able to continue the activation process.
- After the activation process complete, the menu necessary for network setting for wired LAN or wireless LAN is activated.
- The activated functions can be checked on the [ACTIVATE] - [ACTIVATION LIST] menu.



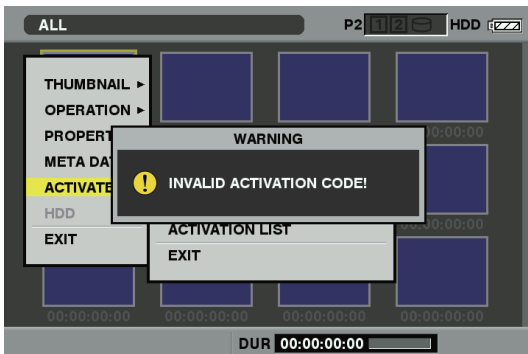
- To use the playlist editing function, activating the optional AG-SFU601G (optional function for network connection) is also required.



After activation, the message [ACTIVATION COMPLETED!] will be displayed.



If activation fails, a message will appear.



**NOTE**

- If an error dialog is displayed, check the insertion of the SD memory card and the storage location of the file where the activation code was stored in step 3 (file name: ACTIVE.LST).

## Setting up the network

Perform setup by the following procedure to connect with the wireless LAN or wired LAN.

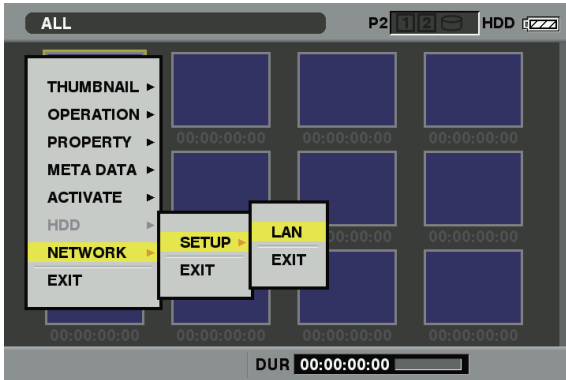
- 1 Setting up the LAN configuration for the P2 Cam
- 2 Activating the LAN function of the P2 Cam
- 3 Setting up the LAN configuration for the computer/mobile terminal

### Setting up the LAN configuration for the P2 Cam

#### Configuring the LAN setting

Open the LAN setting screen and configure the settings by the following procedure.

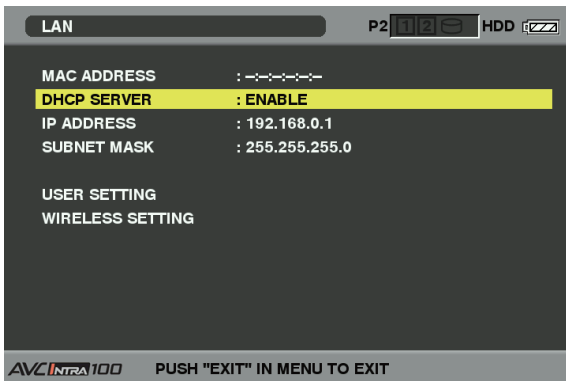
- 1 Press the <THUMBNAIL> button to open the thumbnail screen, open the menu using the <THUMBNAIL MENU> button, and then select [NETWORK]-[SETUP]-[LAN].



#### NOTE

- The item [LAN] will not be displayed when the network function of the P2 Cam has not been activated. Activate the network function of the P2 Cam by following "Activating the network function and playlist editing function" (page 8).

- 2 Configure each item as necessary.



Setting items:

Item name	Setting content
MAC ADDRESS	Indicates the MAC address of the wired LAN or wireless LAN adapter that is currently operating. (Cannot be changed.)
DHCP SERVER	Sets if you use DHCP or not. (factory default: ENABLE)
	[ENABLE] Uses DHCP server function. [DISABLE] Does not use DHCP server function.
IP ADDRESS	Sets the IP address. (factory default: 192.168.0.1)
SUBNET MASK	Sets the subnet mask. (factory default: 255.255.255.0)
USER SETTING	Moves to the user setting screen.
WIRELESS SETTING	Moves to the wireless LAN setting screen.

#### NOTE

- Depending on the setting item, there may be a limit on the characters or values that can be entered.
- The address assignment range of the DHCP server is the 15 values after the set IP address. The IP address may not be assigned correctly when a value larger than or equal to [240] is set, so make sure to use a value between [0] and [239]. Example: When the IP address of the P2 Cam is [192.168.0.1], an address from [192.168.0.2] to [192.168.0.16] are allocated to the terminal.
- By pressing the <MENU> button, you can store the contents of [USER SETTING] and setting of items on the client setting screen that exclude [USER PASSWORD] on the SD memory card, or you can read stored contents.
  - When storing, select [SAVE TO SD CARD] from the menu, then a dialog box appears to enter the name of the file to be stored. Numbers corresponding to month, date, and time will appear as the name in the default setting. Modify it if necessary, and then press [OK] to store the new setting as a file.
  - When reading, select [LOAD FROM SD CARD] from the menu, then a list of stored files will appear. Select a file to be read and press the <SET> button.
- Settings other than the [MAC ADDRESS] will be restored to factory settings when the initialization setting process in step 2 is performed.
- [MAC ADDRESS] is displayed when the LAN function is active. For details, see "Activating the LAN function" (page 11).

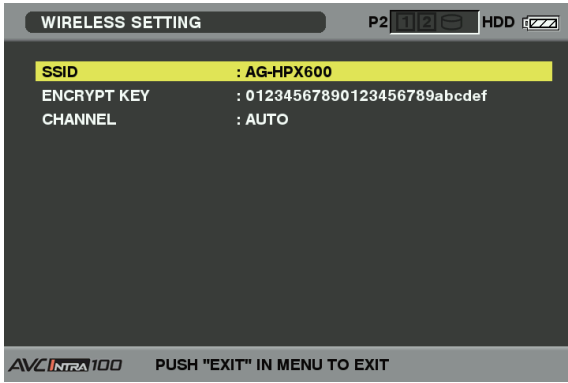
- 3 Select [USER SETTING] in the setting item and display the user setting screen.

- 4 Perform user registration by selecting [NEW USER] from the menu as necessary.

#### NOTE

- User registration is required when connecting from the Web browser (page 19).
- You can move between the items with the <THUMBNAIL MENU> button in the user registration dialog box.
- A maximum of 31 characters can be set for a user name.
- A minimum of 6 and maximum of 15 characters can be set for a password.
- [guest] is registered in the factory setting. (Password is [p2guest].) A maximum of three users can be registered.
- From the menu, you can also delete the registered users [DELETE USER] and change the password [CHANGE PASSWORD]. User settings will be restored to factory settings when the initialization setting process in step 2 is performed. You will still be able to carry out the initialization process even if you have forgotten your user name or password. However, the [DHCP SERVER], [IP ADDRESS], [SUBNET MASK], [SSID], [ENCRYPT KEY], and [CHANNEL] settings will also be restored to factory settings. Make note of these settings before executing the initialization process.

**5** To use the wireless LAN function, select the [WIRELESS SETTING] setting item to display the [WIRELESS SETTING] screen and configure each item as necessary.



Setting items:

Item name	Setting content
SSID	Sets the network name (SSID). (factory default: AG-HPX600)
ENCRYPT KEY	Sets the WPA2 encryption key. (factory default: 01234567890123456789abcdef)
CHANNEL	Sets the channel to be used. (factory default: AUTO)

**NOTE**

- Make sure to change the WPA2 encryption key and [USER SETTING] from the factory settings for security purposes.

**Activating the LAN function**

To activate the LAN function on the P2 Cam, use the items in the following list that is on the [PC/USB/LAN] screen of the setting menu, to configure the connection and function settings.

[PC/USB/LAN] screen

Item/data saved	Setting content
PC MODE	[ON], [OFF] To connect the P2 Cam to the network, set [PC MODE] to [OFF].
UPLINK DEVICE	[ON] Allows communication with an UPLINK device.
	[OFF] Prohibits communication with an UPLINK device.
NETWORK SEL	Specify the connection method for the external devices (such as mobile devices and computers) to the P2 Cam via the network. Enabled when the network function AG-SFU601G is enabled. Select either of [WLAN] or [LAN] depending on your operating environment.
	[WLAN] Connects via wireless LAN.
P2 BROWSE	[LAN] Connect via the <LAN> terminal.
	Sets the P2 browse function. Enabled when the network function AG-SFU601G is enabled. To use the playlist editing function, set [P2 BROWSE] to [OFF].
	[ON] Enables the P2 browse function.
PLAYLIST	[ON (+CTRL)] Enables the P2 browse function, allowing the record control as well as the time code and user bits settings on the device from the connected device.
	[OFF] Disables the P2 browse function.
	Sets the playlist editing function. Set it to [ON] before using the playlist editing function. It is set to [OFF] every time you turn off the power of the P2 Cam. Enabled when the network function AG-SFU601G and playlist editing function AG-SFU604G are both enabled. When [PC MODE] is set to [ON], and the selection displayed in blue and selection is disabled.
	[ON] Activates the playlist editing function.
	[OFF] Deactivates the playlist editing function.

\_\_\_\_\_ indicates the factory default setting.

If there is a problem in network connection, the viewfinder shows [NETWORK ERROR].

If the function does not operate normally, check the connections of the wireless module, LAN cable, etc.

**Setting up LAN configuration for computer/mobile terminal**

Perform the setting of the computer and mobile device to be connected to the P2 Cam.

**NOTE**

- Confirm that your computer or mobile device is enabled to connect to a wireless LAN connection. For how to confirm, refer to the operating instructions of the device.
- This product cannot connect with IEEE802.11a and IEEE802.11b.

**NOTE**

- Depending on the setting item, there may be a limit on the characters or values that can be entered.
- Used channel is either [AUTO] or a selection from [ch1], [ch6], and [ch11]. If you select a channel, the channel will be given priority in assignment. However, a different channel may be assigned depending on the environment.
- The WPA2 encryption key is set from one of the following entries. The WPA2 encryption key must be entered according to the following information.

Setting content	Input content
String	A string of 8 - 63 characters
Hexadecimal	64-digit hexadecimal

**6** Return to the thumbnail screen by pressing the <EXIT> button once or twice.

**NOTE**

- Depending on the setting item, its content will not be reflected until you return to the thumbnail screen.
- It may take a while for the operation in the thumbnail screen to become available due to the processing time of the setting.

**7** Press the <THUMBNAIL> button to exit the thumbnail screen.

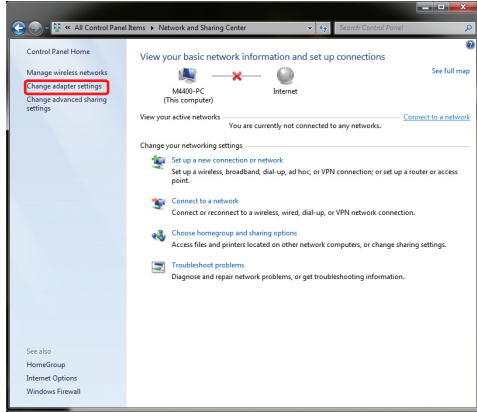
• The supported wireless LAN encryption method of this product is WPA2 only.

**Setting up for Windows**

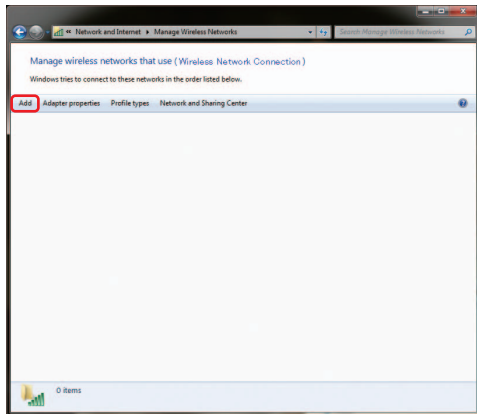
**1** Turn off the P2 Cam.

**2** Display the [Network and Sharing Center] screen of Windows.

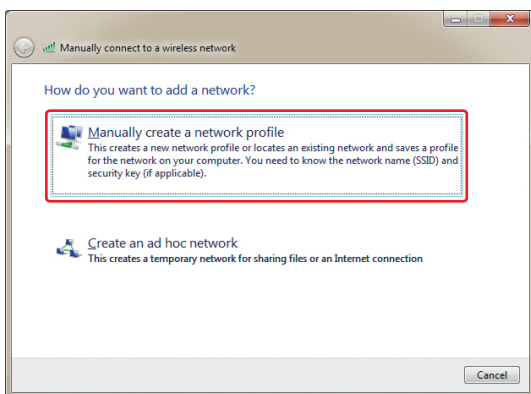
Click [Start] - [Control Panel] - [Network and Sharing Center] in sequence.



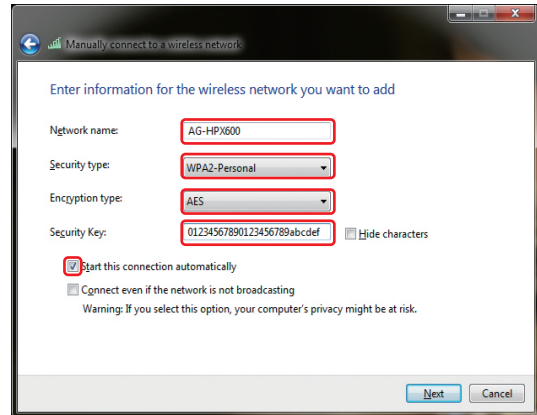
**3** Click [Manage wireless networks] - [Add].



**4** Click [Manually create a network profile (M)].

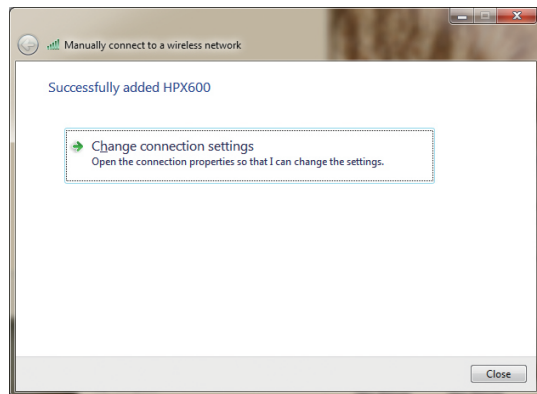


**5** Configure the wireless LAN settings in the following screen and click [Next].

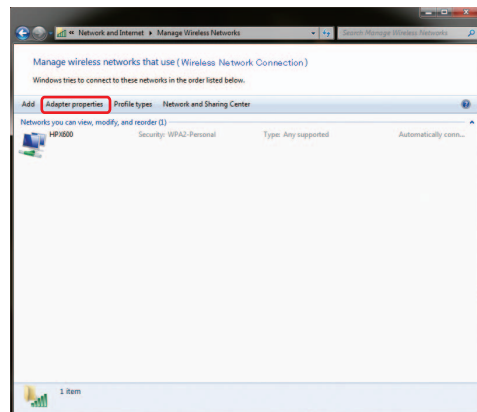


- [Network Name (E)]: Enter the SSID that has been set with the P2 Cam (factory default: AG-HPX600).
- [Security type (S)]: Select [WPA2-Personal].
- [Encryption Type (R)]: Select [AES].
- [Security key (C)]: Enter the [ENCRYPT KEY] that has been set with the P2 Cam. (factory default: 01234567890123456789abcdef)
- Check [Start this connection automatically (T)].

**6** Click [Close].



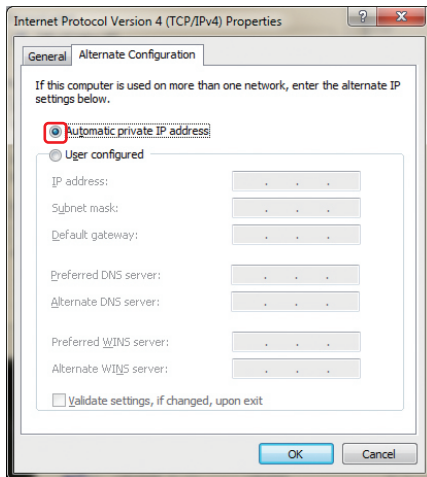
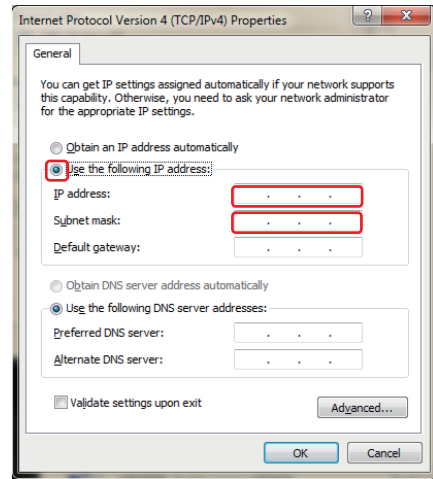
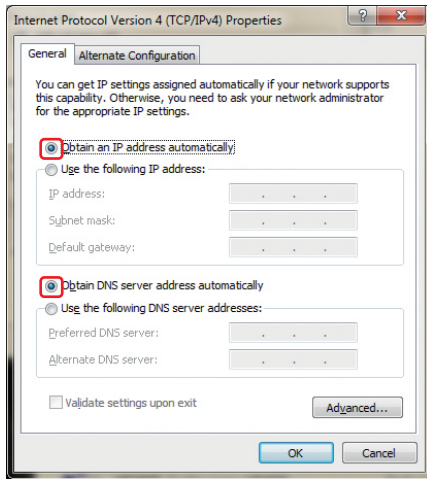
**7** Click [Adapter properties].



**8** Click [Internet Protocol Version 4 (TCP/IPv4)] and set up either of the following depending on the [DHCP SERVER] setting (page 10) of the P2 Cam.

- When the P2 Cam [DHCP SERVER] is set to [ENABLE]
  - [General] tab: Select [Obtain an IP address automatically] and [Obtain DNS server address automatically].
  - [Alternate Configuration]: Select [Automatic private IP address].

## Setting up the network



9 Click [OK] twice.

10 Turn on the P2 Cam, and then set the [PLAYLIST] item in the setting menu on the [PC/USB/LAN] screen to [ON] on the P2 Cam.

11 Click [Network and Sharing Center] - [Connect Network] and check the connection.



### ■ When the P2 Cam [DHCP SERVER] is set to [DISABLE]

- [General] tab: Select [Use the following IP address] and enter settings as follows.
  - [IP address]:  
[Network address]: The same address as the P2 Cam  
[Host Address]: Address that does not overlap with that of the P2 Cam and peripheral devices
  - [Subnet Mask]: The same value as the P2 Cam
- [Default gateway], [Primary DNS server], and [Alternative DNS server] are not required, so leave them blank.

### NOTE

- It takes several seconds after the P2 Cam main unit is turned on until the wireless LAN starts operation. Wait a few moments before checking the connection.
- The connection status may be displayed as limited access even when the P2 Cam is successfully connected.
- For each item in the P2 Cam setting menu, see “Activating the LAN function” (page 11).

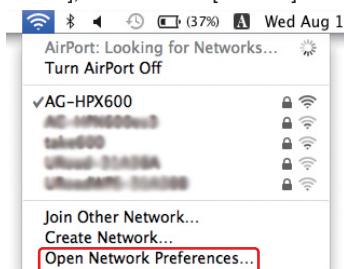
## Setting up for Mac OS X

1 Turn on the P2 Cam, and then set the [PLAYLIST] item in the setting menu on the [PC/USB/LAN] screen to [ON] on the P2 Cam.

[NETWORK ERROR] may be displayed even when there is no problem.

2 Click [Open Network Preferences...] from the AirPort status icon on the menu bar.

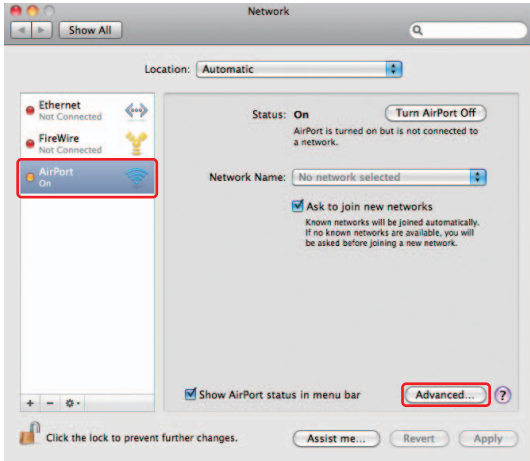
When icons are not displayed on the menu bar, click [Apple] menu - [System Preferences], and then click [Network].



### NOTE

- The part “AirPort” in the descriptions may be [Wi-Fi] depending on your Mac OS.

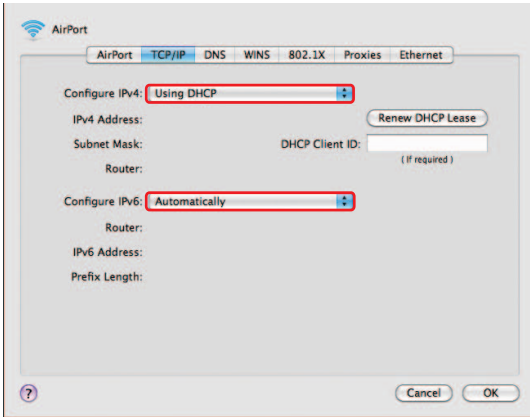
**3** Select AirPort from the service and click [Advanced...] of [Show AirPort status in menu bar] on the bottom right.



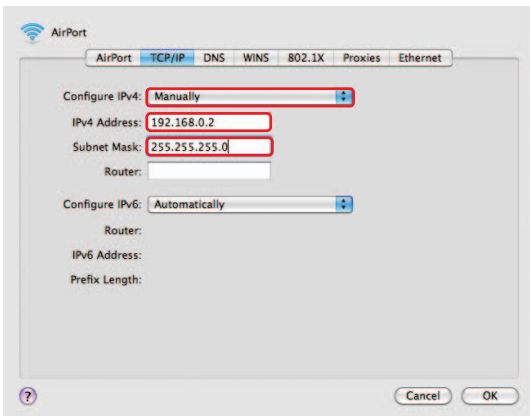
- Select TCP/IP from the detailed items.

**4** Set up either of the following depending on the [DHCP SERVER] setting (page 10) of the P2 Cam.

- When the P2 Cam [DHCP SERVER] is set to [ENABLE]
  - [Configure IPv4]: Select [Using DHCP].
  - [Configure IPv6]: Select [Automatically].



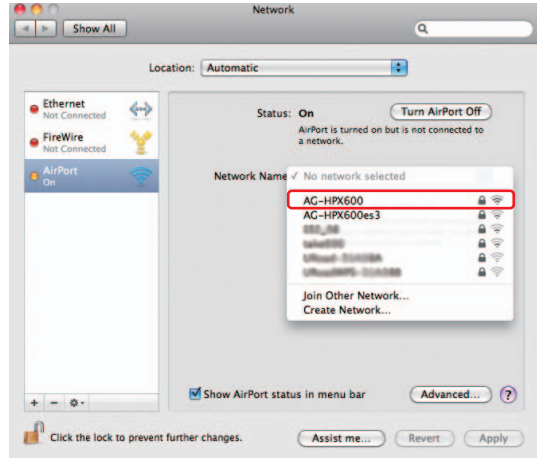
- When the P2 Cam [DHCP SERVER] is set to [DISABLE]
  - [Configure IPv4]: Select [Manually] and enter settings as follows.
    - [IPv4 Address]: [Network address]: The same address as the P2 Cam
    - [Host Address]: Address that does not overlap with that of the P2 Cam and peripheral devices
    - [Subnet Mask]: The same value as the P2 Cam
    - [Router]: It is not required, so leave it blank.
  - [Configure IPv6]: Select [Automatically].



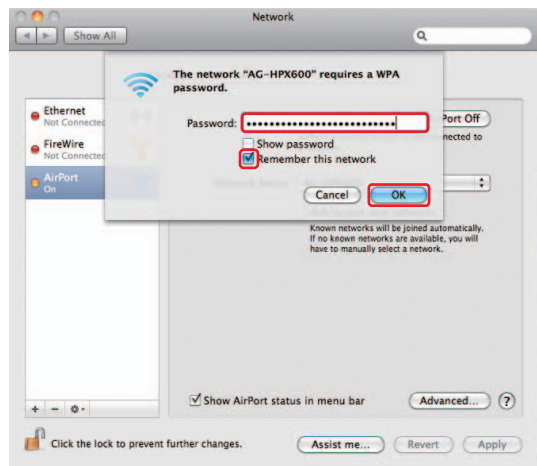
**5** Select the network to be set (factory default: AG-HPX600) for the [Network Name] item.

**NOTE**

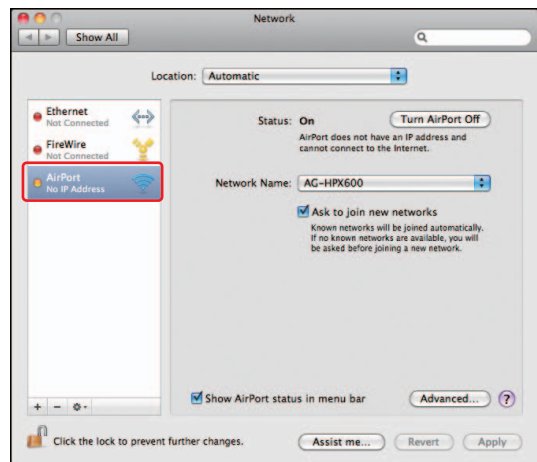
- If [Status] is [Off], click [Turn AirPort On] to set [Status] to [On], to enable network selection.
- The target P2 Cam will not appear as options unless its [WLAN] setting is enabled and its power is on.



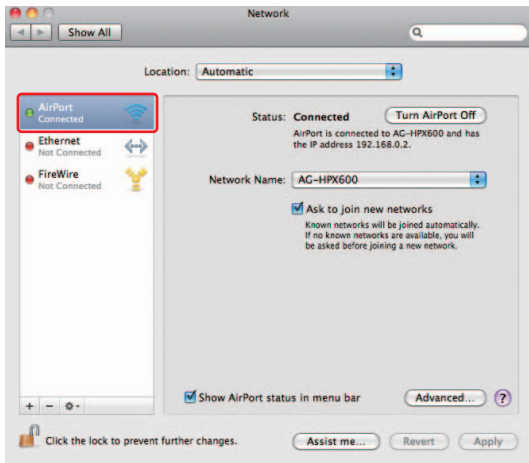
**6** Enter the WPA2 encryption key (factory default: 01234567890123456789abcdef) set on the P2 Cam for the password request, check [Remember this network], and then click [OK].



**7** The “on” status will change to “no IP address”. Wait for approximately one to two minutes.



**8** Confirm that it changes to connected status.




**Mobile device (iPad) (when acquiring IP address automatically with DHCP using wireless LAN function)**

**1** Turn on the P2 Cam, and then set the [PLAYLIST] item in the setting menu on the [PC/USB/LAN] screen to [ON] on the P2 Cam.

[NETWORK ERROR] may be displayed even when there is no problem.

**2** From the top screen, open [Settings] - [Wi-Fi] -[Choose a Network...], and confirm that the network name for the P2 Cam is displayed.

**3** Tap the  button on the right of the P2 Cam network to connect, and select [DHCP] in [IP address].



**4** Return to [Wi-Fi Network] and touch the key icon.


**5** Enter the password (factory default: 01234567890123456789abcdef) correctly, then tap [Join].

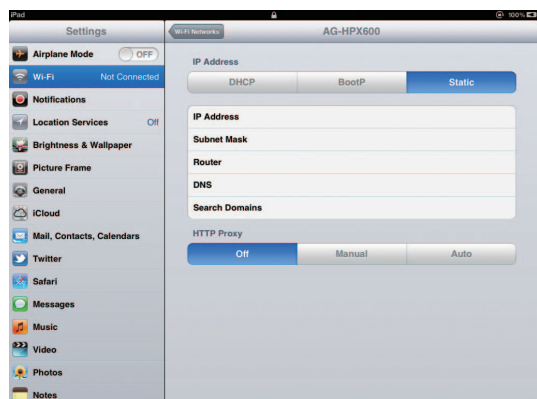
Connection is complete when the Wi-Fi icon  is displayed at the top left of the screen.



**Mobile device (iPad) (when acquiring IP address manually using wireless LAN function)**

**1** From the top screen, open [Settings] - [Wi-Fi] -[Choose a Network...], and confirm that the network name for the P2 Cam is displayed.

**2** Tap the  button on the right of the P2 Cam network to connect, and select [Static] in [IP address].



### 3 Set up the network.

Set up only two items [IP address] and [Subnet Mask] among the following five setting items.

- [IP address]
 

The address to be assigned to the iPad. Enter settings as follows.  
 [Network address]: The same address as the P2 Cam  
 [Host Address]: Address that does not overlap with that of the P2 Cam and peripheral devices
- [Subnet Mask]
 

Set the same value as the P2 Cam.
- [Router] (address)
 

It is not required, so leave it blank.
- [DNS] (address)
 

It is not required, so leave it blank.
- [Search Domains]
 

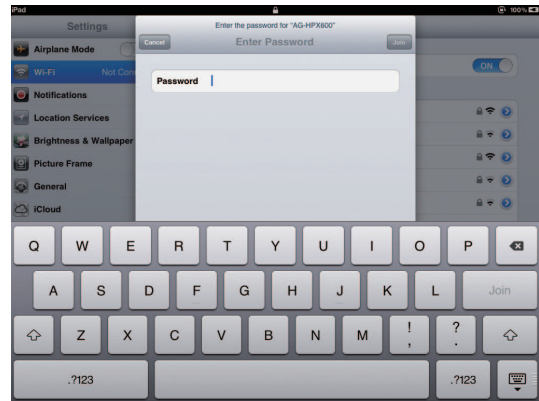
It is not required, so leave it blank.



### 4 Return to [Wi-Fi Network].

### 5 Enter the password (factory default: 01234567890123456789abcdef) correctly, then tap [Join].

Connection is complete when the Wi-Fi icon  is displayed at the top left of the screen.



## Setting up wired LAN for computer

To connect to the P2 Cam via wired LAN, set the wired LAN of the target computer.

### NOTE

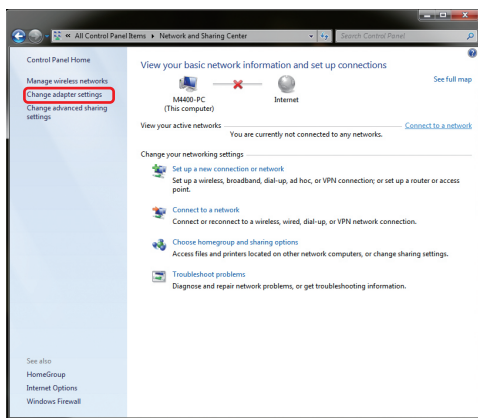
- Confirm that your computer is enabled to connect to a wired LAN connection. For how to confirm, refer to the operating instructions of the device.

## Setting up for Windows

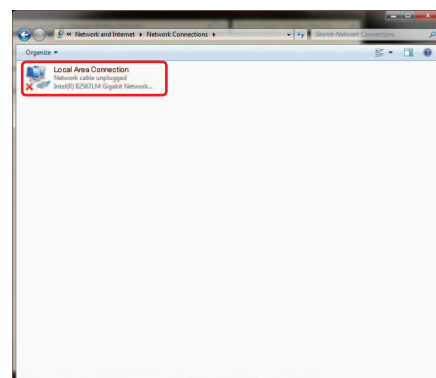
### 1 Display the [Network and Sharing Center] screen of Windows.

Click [Start] - [Control Panel] - [Network and Sharing Center] in sequence.

### 2 Click [Change adapter settings].

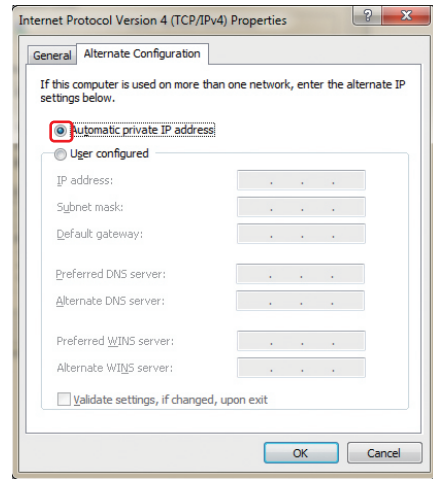
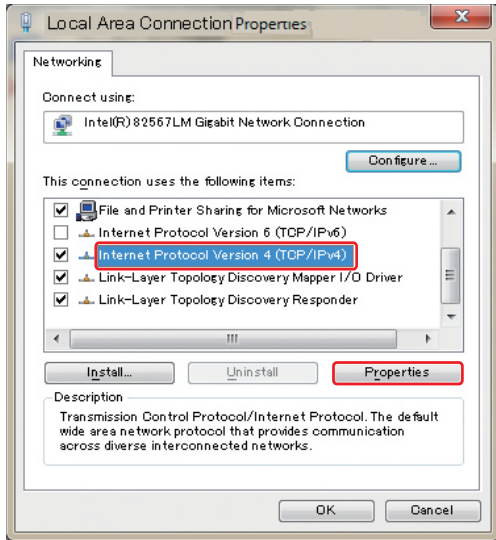


### 3 Select the local area connection, and select the [Change settings of this connection] command.





**4** Select [Internet Protocol Version 4 (TCP/IPv4)] and click [Properties].

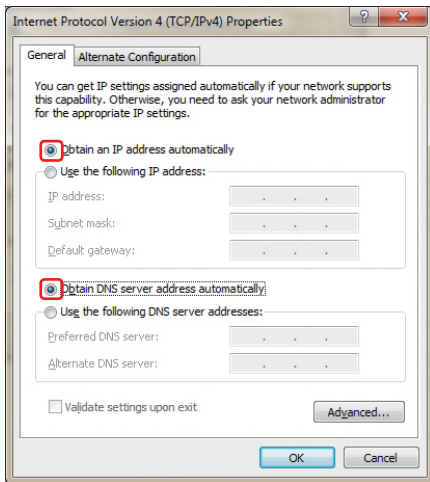


■ When the P2 Cam [DHCP SERVER] is set to [DISABLE]

- [General] tab: Select [Use the following IP address] and enter settings as follows.
  - [IP address]:
  - [Network address]: The same address as the P2 Cam
  - [Host Address]: Address that does not overlap with that of the P2 Cam and peripheral devices
  - [Subnet Mask]: The same value as the P2 Cam
- [Default gateway], [Primary DNS server], and [Alternative DNS server] are not required, so leave them blank.

**5** Set up either of the following depending on the [DHCP SERVER] setting (page 10) of the P2 Cam.

- When the P2 Cam [DHCP SERVER] is set to [ENABLE]
  - [General] tab: Select [Obtain an IP address automatically] and [Obtain DNS server address automatically].
  - [Alternate Configuration] tab: Select [Automatic private IP address].

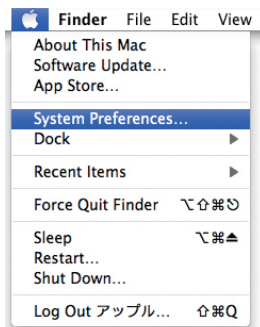


**6** Click [OK], and then click [Close].

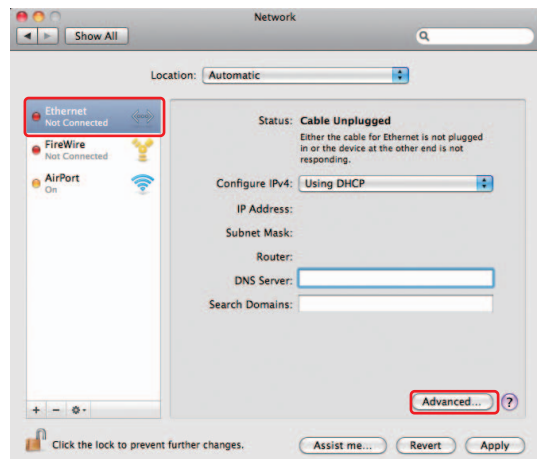
**7** Connect the P2 Cam and computer with a network cable, and then turn on the P2 Cam.

**Setting up for Mac OS X**

**1** Click the [Apple] menu - [System Preferences], and then click [Network].



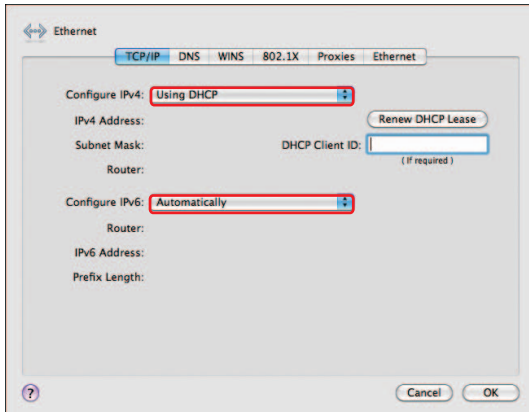
**2** Select [Ethernet] from the service and click [Advanced...] on the bottom right.



**3 Set up either of the following depending on the [DHCP SERVER] setting (page 10) of the P2 Cam.**

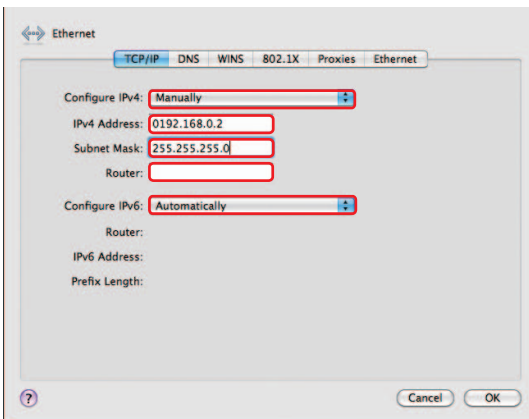
■ **When the P2 Cam [DHCP SERVER] is set to [ENABLE]**

- [Configure IPv4]: Select [Using DHCP].
- [Configure IPv6]: Select [Automatically].



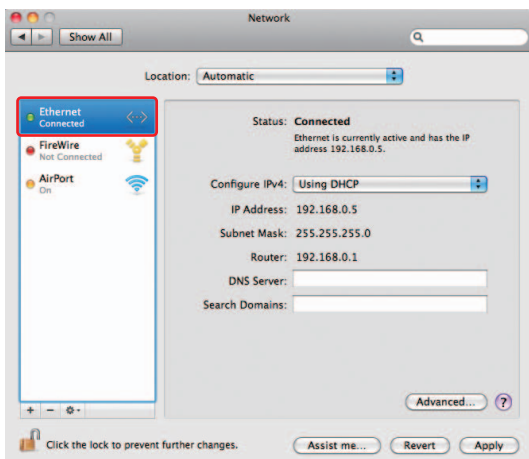
■ **When the P2 Cam [DHCP SERVER] is set to [DISABLE]**

- [Configure IPv4]: Select [Manually] and enter settings as follows.
  - [IPv4 Address]:
    - [Network address]: The same address as the P2 Cam
    - [Host Address]: Address that does not overlap with that of the P2 Cam and peripheral devices
  - [Subnet Mask]: The same value as the P2 Cam
  - [Router]: It is not required, so leave it blank.
- [Configure IPv6]: Select [Automatically].



**4 Click [OK], and then click [Apply].**

**5 Connect the P2 Cam and Mac using a network cable, turn on the P2 Cam, and then confirm the connected status.**



# Connecting to computer/iPad

## Starting up the application from Web browser

After the network connection setting is completed on the P2 Cam and the computer/iPad, start up the Web browser with the following procedure.

### 1 Start up the Web browser.

For Windows 7:

Click [Start] - [All Program] - [Internet Explorer].

For Windows 8:

Click the [Internet Explorer] icon.

For Mac OS X:

Click [Go] - [Application], and then double-click [Safari] from the list.

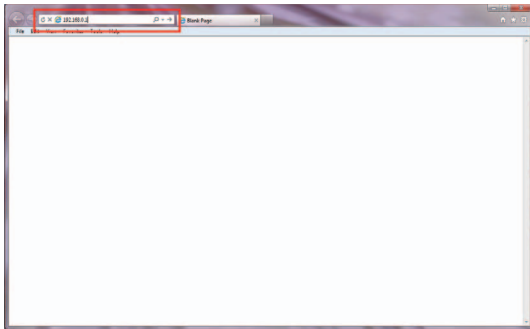
For iPad:

Tap the [Safari] icon on the home screen.

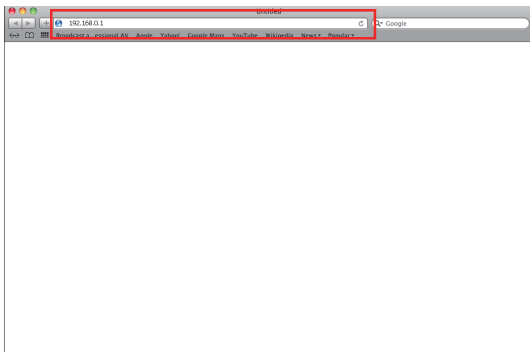
### 2 Enter the P2 Cam IP address that has been set for the P2 Cam in the address bar of the Web browser.

Enter the IP address set on the P2 Cam in the address bar at the top of the Web browser screen (factory default: http://192.168.0.1) to access the P2 Cam.

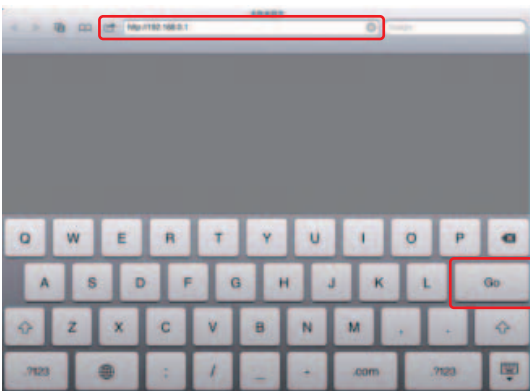
Internet Explorer screen of Windows 7, Windows 8



Safari screen of Mac



Safari screen of iPad

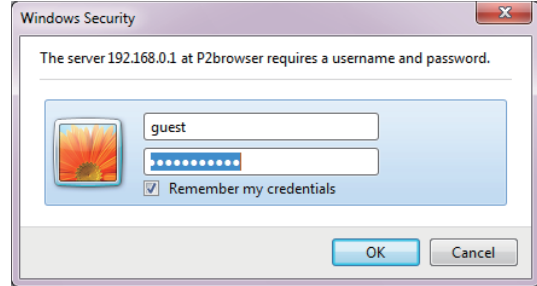


### 3 An authentication screen appears. Enter the user name and password set on the P2 Cam.

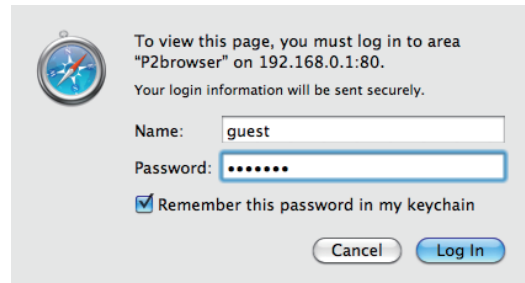
If you use a computer, press the Enter key, and if you use iPad, click or tap the log in button.

(Factory default: user name: guest, password: p2guest)

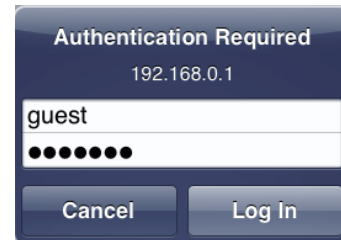
Authentication screen of Internet Explorer for Windows 7, Windows 8



Authentication screen of Safari for Mac

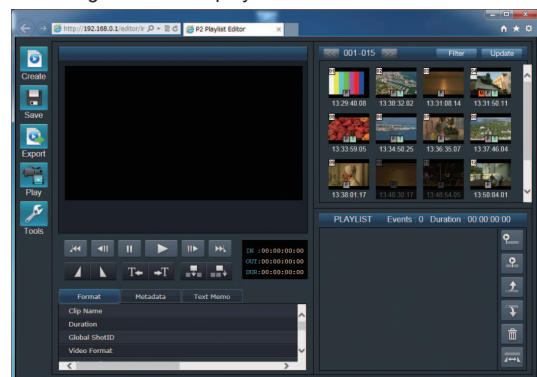


Authentication screen of Safari for iPad



### 4 Web application "P2 Playlist Editor" starts up.

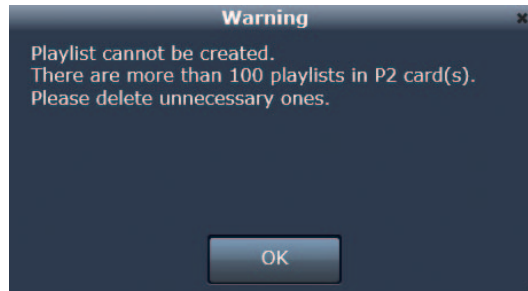
The following screen is displayed.



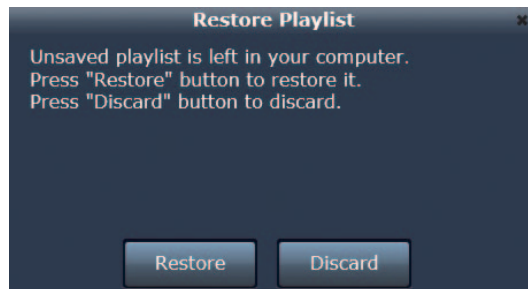
## NOTE

- Only one client device can be connected at the same time while the playlist editing function operates.

- When the Web application for playlist editing has started up, if more than 100 playlist files are stored in the P2 card that is inserted into the P2 Cam, the following warning dialog box will appear.



- On the Web application for playlist editing, if more than 100 playlist files are stored on the P2 card, a new playlist file cannot be saved on the P2 card. When the warning is displayed, it is recommended that you use the function in "Deleting playlist file" (page 33) to delete the playlist files stored on the P2 card, and to reduce playlist files on the P2 card to 100 or less.
- You can create a playlist using the Web application for playlist editing without deleting playlists. However, the created playlist cannot be saved.
- If the playlist editing status remains on the browser of the terminal when the Web application for playlist editing has started up, in such cases as exiting or restarting the Web application without saving the edited playlist, the following dialog box will appear.



To restore the data in the editing status, tap or click [Restore]. To discard the data, tap or click [Discard]. It is recommended that you save the edited playlist when exiting the Web application for playlist editing.

# Creating playlist

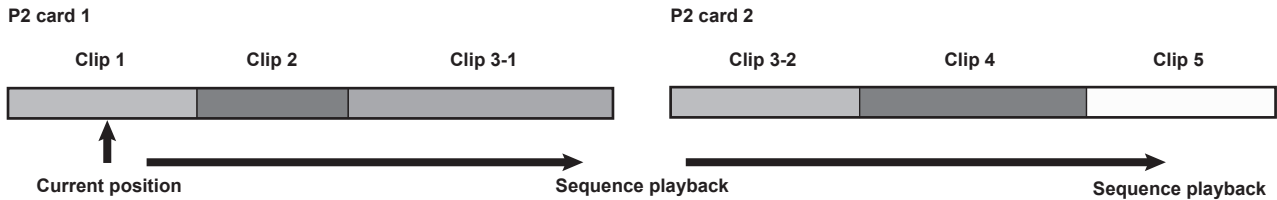
## Playlist editing functions

### About playlist

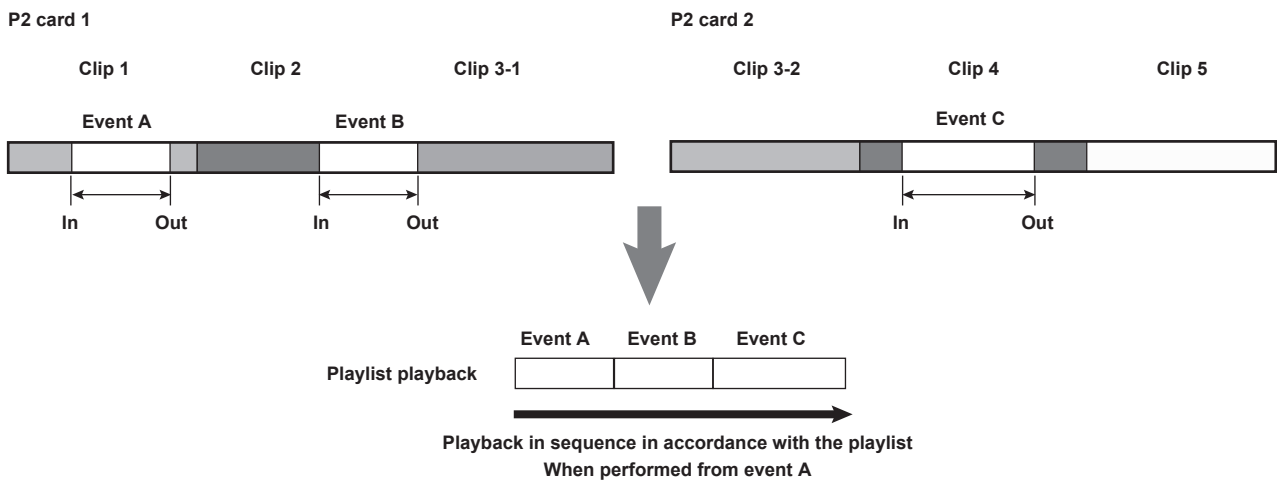
This function creates playback lists that consist of parts of clips stored on the P2 card to be played back. The edited results can be viewed by performing playback according to the lists. A unit of video that you wish to play is called an “event” and a playback list created by connected events is called a “playlist”.

As it does not manipulate clips directly, the editing result can be viewed immediately.

In the normal speed playback of the P2 Cam, a video is played back in sequence from the playback start point to the last clip.



In the playlist playback, only the necessary part of the clip is played back in sequence.



This function creates the playlist.

#### ■ Recording format and frame rate for events that can be registered

Recording format and frame rate for events that can be registered in playlists are limited to the followings.

NTSC: 1080/59.94i, 1080/29.97P, 1080/29.97PN, 720/59.94P, 720/29.97P, 720/29.97PN

PAL: 1080/50i, 1080/25P, 1080/25PN, 720/50P, 720/25P, 720/25PN

Recording format: DVCPRO HD, AVC-I 50, AVC-I 100

#### NOTE

- If proxy is not recorded on the P2 card, the event start point and end point cannot be set with this function. Load a video encoder board (optional AG-YDX600G) and set up for recording proxy.
- In the playlist created with this function, the ranges of video part and audio part of a clip cannot be specified separately.
- A maximum of 100 events can be included in a playlist.
- All the events to be registered in a playlist must have the same recording format and frame rate.
- The recording format and frame rate of events to be registered in a playlist must be same as those set for the P2 Cam immediately before starting the operation of the playlist editing function.
- A playlist with a maximum of 24-hour duration can be created. When the format is 720/59.94P and 720/50P, the In and Out of an event that can be specified is up to the time code unit.
- On Internet Explorer, some of the proxy (SHQ 2CH MOV, STD 2CH MP4) cannot be played back. A message such as [Unsupported Proxy Format] may be displayed. Although the positions of In and Out points cannot be changed, the event can be added to a playlist.

### Activating the playlist editing function.

Set the [PLAYLIST] item on the [PC/USB/LAN] screen in the P2 Cam setting menu to [ON]. For each item in the P2 Cam setting menu, see “Activating the LAN function” (page 11).

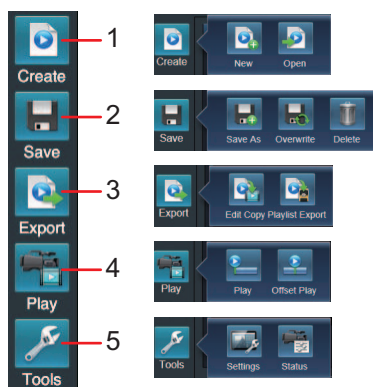
#### NOTE

- During the operation of playlist editing function, the access LED of the P2 card indicates an accessed status, and the P2 card cannot be removed from the P2 Cam. However, you can insert a P2 card to the P2 Cam during the operation of the playlist editing function.
- For the playlist editing function, you cannot use an encrypted card that has been manually authenticated using the CPS function of the microP2 card. Configure the authentication setting to perform authentication automatically.

- You can switch the playlist editing functions using the <USER> buttons, by allocating [PLAYLIST] to the <USER> buttons (<USER MAIN>/<USER1>/<USER2>) of the P2 Cam.  
For the detailed procedure of allocating functions to the <USER> buttons, refer to the operating instructions of the AG-HPX600 series.
- Any button operation on the P2 Cam is not accepted during the operation of the playlist editing function, except for the <USER> button on which the “operation switching of playlist editing function” is allocated. During the operation of the playlist editing function, recording of video will not be performed even if you press the <REC> on the P2 Cam. Exit the playlist editing function if you wish to an operation other than editing playlist. (For details, see “Exiting playlist editing function” (page 38).)

### Parts names and functions of the Web application for playlist editing

#### [Menu] panel



#### 1 [Create]

This button creates playlists. Clicking or tapping this button displays the following sub buttons.

- [New]: Creates a new playlist. Clicking or tapping this button discards the playlist created being created before that.
- [Open]: Reads playlist files stored on the P2 card.  
For details, see “Opening playlist file” (page 33).

#### 2 [Save]

This button saves and deletes playlists. Clicking or tapping this button displays the following sub buttons.

- [Save As]: Specifies the name of a playlist and saves it to the P2 card.  
For details, see “Saving playlist to P2 card” (page 32).
- [Overwrite]: Overwrites and saves a playlist.  
For details, see “Saving playlist to P2 card” (page 32).
- [Delete]: Deletes playlist files stored on the P2 card.  
For details, see “Deleting playlist file” (page 33).

#### 3 [Export]

This button performs edit copy or export of playlists. Clicking or tapping this button displays the following sub buttons.

- [Edit Copy]: Performs edit copy based on the playlist.  
For details, see “Creating a new clip from playlist (edit copy)” (page 36).
- [Playlist Export]: Performs export based on the playlist.  
For details, see “Exporting playlist” (page 37).

#### 4 [Play]

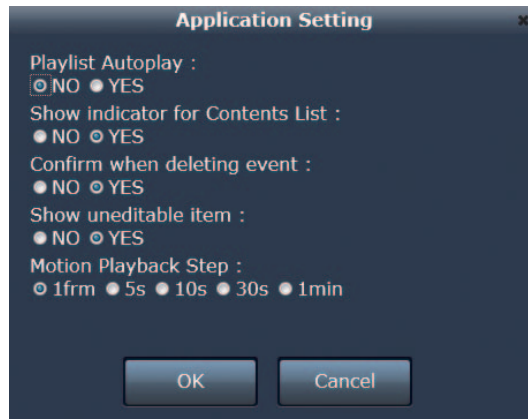
This button plays back playlists on the P2 Cam. Clicking or tapping this button displays the following sub buttons.

- [Play]: Plays back the playlist on the P2 Cam from the beginning.  
For details, see “Playing back playlist on the P2 Cam” (page 35).)
- [Offset Play]: Specifies the playback start point in a playlist and plays back the playlist on the P2 Cam.  
For details, see “Playing back playlist on the P2 Cam” (page 35).)


#### 5 [Tools]

This button performs the settings of the Web application for playlist editing. Clicking or tapping this button displays the following sub buttons.

-  [Settings]: Displays a dialog box for settings of the Web application for playlist editing. The following items can be set on the dialog box.



- [Playlist Autoplay]:

<b>YES</b>	Starts playback automatically on the P2 Cam when clicking or tapping  [Play] on the menu.
<b>NO</b>	Does not start playback on the P2 Cam until the playback button is clicked or tapped on the control dialog box.

- [Show indicator for Contents List]:

<b>YES</b>	Displays the shot mark indicator, clip with proxy indicator, text memo indicator, and edit copy clip indicator above the thumbnail images on the [Contents List] panel.
<b>NO</b>	Does not display the indicators on the thumbnail images on the [Contents List] panel.



- [Confirm when deleting event]:

<b>YES</b>	Displays the confirmation dialog box every time when deleting an event from a playlist.
<b>NO</b>	Does not display the confirmation dialog box when deleting an event from a playlist.

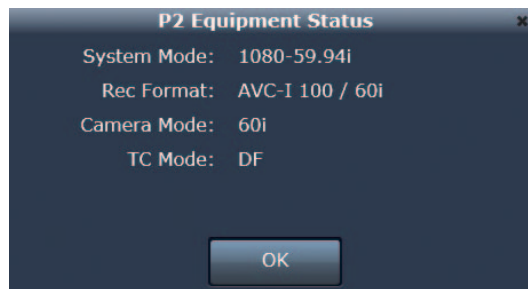
- [Show uneditable item]:

<b>YES</b>	Displays clips that cannot be added to the playlist (caused by format mismatch between the current camera setting, etc., for example, the camera setting is NTSC and the clip is recorded in PAL) on the [Contents List] panel.
<b>NO</b>	Does not display clips that cannot be added to the playlist on the [Contents List] panel.

- [Motion Playback Step]:

Sets the interval that the playback position of a video jumps when the frame rewind  button or the frame forward  button is clicked or tapped. The setting can be selected from [1frm], [5s], [10s], [30s], and [1min].

-  [Status]: Displays a dialog box for confirming the settings of the P2 Cam. The following items can be confirmed on the dialog box.



- [System Mode]: Indicates the signal format of P2 Cam.

- [Rec Format]: Indicates the recording codec and shooting/recording mode of the P2 Cam.

- [Camera Mode]: Indicates camera shooting mode of P2 Cam.

- [TC Mode]: Indicates the count correction mode of the time code generator of the P2 Cam.

[Contents List] panel



Clip that cannot be selected

[Contents List] panel displays the thumbnail images of clips that are stored on the P2 card.

A maximum of 300 clips are displayed, and they are divided by every 100 clips. The clips are displayed from the one with the oldest shooting date and time.

**1 Clip number**

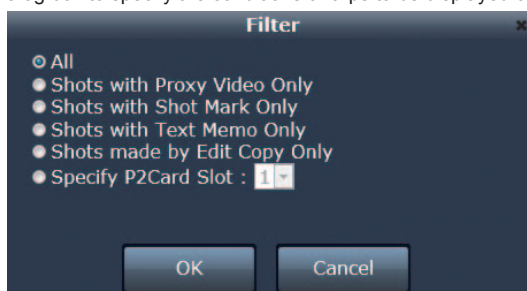
Indicates the number that the P2 Cam has given to all the clips, which are recognized correctly by the P2 card. The numbers are given from the one with the oldest shooting date and time. If filtering has been performed, only the filtered clips are displayed, and the numbers may not be consecutive.

**2 Next/previous 100 clips buttons**

Clicking or tapping this button displays the next or previous 100 clips that are divided by every 100 clips for displaying.

**3 Filter button**

Clicking or tapping this button displays a dialog box to specify the conditions of clips to be displayed on [Contents List].



One of the followings can be set for the conditions of clips to be displayed on [Contents List].

**[ALL]:**

Displays all the clips recognized correctly by the P2 card.

**[Shots with Proxy Video Only]:**

Displays only the thumbnails with the clip with proxy indicators.

**[Shots with Shot Mark Only]:**

Displays only the thumbnails with the shot mark indicators.

**[Shots with Text Memo Only]:**

Displays only the thumbnails of the text memo indicators.

**[Shots made by Edit Copy Only]:**

Displays only the thumbnails of the edit copy clip indicators.

**[Specify P2Card Slot]:**

Displays only clips stored in the P2 card that is inserted into the slot of the specified number of the P2 Cam.

**4 Update button**

Clicking or tapping this button updates the display of [Contents List] when the communication is not in a good condition and the thumbnail images of the clips stored on the P2 card has not been displayed, or when inserting a P2 card after activating the playlist editing function on the P2 Cam.

**5 Edit copy indicator**

Displayed with clips created by edit copy.

**6 Text memo indicator**

Displayed with clips with text memo data.

**7 Shot mark indicator**

Displayed with clips to which shot marks are added.

**8 Clip with proxy indicator**

Displayed with clips on which proxy is recorded.

**9 Thumbnail image**

Displays thumbnail images of clips stored on the P2 card. Clicking or tapping to select the thumbnail with a clip with proxy indicator plays back the proxy video on the [Player] panel. For clips without proxy indicators, the [Player] panel shows a black screen. You cannot select a clip whose recording format and frame rate does not match those set for the P2 Cam immediately before starting the operation of the playlist editing function, even if the clip has the thumbnail with clip with proxy indicator. The thumbnail images of clips that cannot be selected are displayed in darker color.



**10 Time code**

Displays the time code (TC) of the recording start time of the clip.

**NOTE**

- Clips with recording failure caused by such an accident as being powered off during recording operation are not displayed in [Contents List].

**[Player] panel**



[Player] panel shows the proxy video of a clip selected on the [Contents List] panel and buttons to play back or skip the clip. When previewing a playlist, video of the clip and buttons to control playback are displayed.

**1 Player screen**

Displays the proxy video of a clip or the preview video of the playlist.

**2 Player status**

Shows [CLIP] when playing back a clip selected in the [Contents List] panel, [PLAYLIST] when previewing a playlist, and indicates the type of the video on the player screen.

**3 Pause button**

Clicking or tapping this button pauses the playback of the current video.

**4 Jump to In/Out point buttons**

Clicking or tapping these buttons moves the playback position to the In or Out point. It is not displayed when previewing a playlist.

**5 Frame forward/frame rewind buttons**

Clicking or tapping these buttons moves the playback position to the one frame forward or backward. The interval of the movement can be set to 5 seconds, 10 seconds, 30 seconds, or 1 minute, besides one frame movement. It is not displayed when previewing a playlist. For details, see "[Motion Playback Step]:" (page 23).

**6 Seek bar**

Shows the playback position of the proxy video. You can move the slider to move the playback position to any point. indicates that a text memo is added on the point. Similarly, indicates that an In point is set on the point and indicates that an Out point is set on the point. The seek bar is not displayed when previewing a playlist.

**7 Playback button**

Clicking or tapping this button while playback is not performed starts the playback of the video.

**8 Set In point button**

Clicking or tapping this button sets a start point of an event (In point). It is not displayed when previewing a playlist.

**9 Set Out point button**

Clicking or tapping this button sets an end point of an event (Out point). It is not displayed when previewing a playlist.

**10 Jump to text memo buttons**

Clicking or tapping these buttons moves the playback position to the nearest point where a text memo is added. It is not displayed when previewing a playlist.

**11 Add event button (in the middle of playlist)**

Adds an event whose range is determined by In and Out points to a playlist. It is not displayed when previewing a playlist. For details, see "Registering to playlist" (page 29).

**12 Add event button (to the last of playlist)**

**NOTE**

- Although playback and position changing of In and Out points cannot be performed when the selected clip has no proxy video, the event can be added to a playlist.
- On Internet Explorer, some of the proxy (SHQ 2CH MOV, STD 2CH MP4) cannot be played back. Although the positions of In and Out points cannot be changed, the event can be added to a playlist.
- Use the jump to text memo buttons during a pause. During playback, the jump operation may not be performed properly.

**[Metadata] panel**

A set of metadata of the clip selected in the [Contents List] panel are displayed. Metadata are displayed in three tabs [Format], [Metadata], and [TextMemo]. The items that can be edited are described in the explanations of each item. Enter the content you wish to set and click or tap [OK].

■ **[Format] tab**

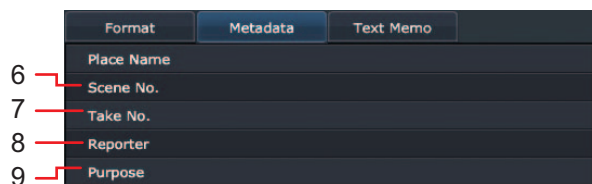
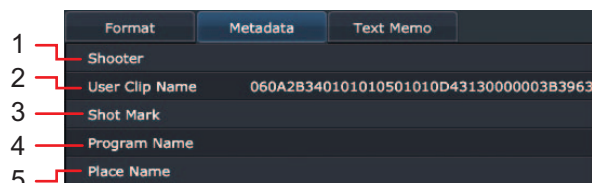
	Format	Metadata	Text Memo
1	First Clip Name	0004TO	
2	Number Of Clips	1	
3	Duration	00:00:14.03	
4	Global Clip ID	060A2B340101010501010D431300000029A65E	
5	Video Format	MXF	

	Format	Metadata	Text Memo
	Video Format	MXF	
6	Video Codec	AVC-I_1080/59.94i	
7	Video Frame Rate	59.94i	
8	Start Timecode	13:31:50.11	
9	Start UB	270F6003	

	Format	Metadata	Text Memo
	Start Timecode	13:31:50.11	
	Start UB	270F6003	
10	Audio Channels	4	
11	Audio Format	MXF	
12	Audio Sampling Rate	48000	

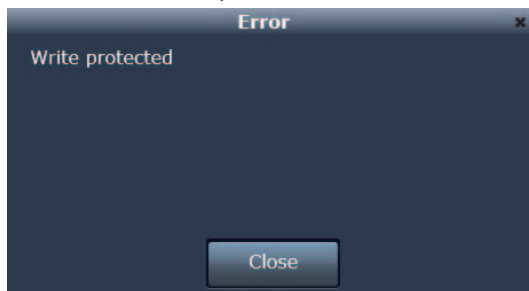
- 1 **[First Clip Name]**  
Indicates the name of the top file within the P2 card where the selected clip is located.
- 2 **[Number Of Clips]**  
Indicates the number of the file within the P2 card where the selected clip is located.
- 3 **[Duration]**  
Indicates the duration of the selected clip.
- 4 **[Global Clip ID]**  
Indicates the global clip ID, the status of shooting, of the selected clip.
- 5 **[Video Format]**  
Indicates the video format of the selected clip.
- 6 **[Video Codec]**  
Indicates the video codec information of the selected clip.
- 7 **[Video Frame Rate]**  
Indicates the video frame rate information of the selected clip.
- 8 **[Start Timecode]**  
Indicates the time code of the recording start time of the selected clip.
- 9 **[Start UB]**  
Indicates the user bits of the recording start time of the selected clip.
- 10 **[Audio Channels]**  
Indicates the number of audio channels of the selected clip.
- 11 **[Audio Format]**  
Indicates the audio format of the selected clip.
- 12 **[Audio Sampling Rate]**  
Indicates the audio sampling rate information of the selected clip.

■ [Metadata] tab

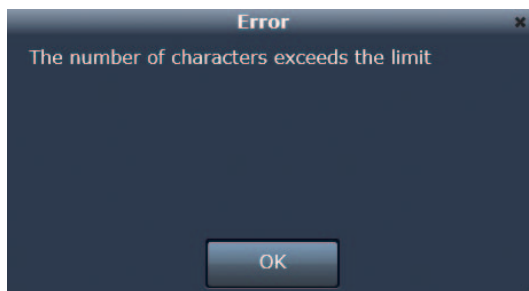


1 [Shooter]

Indicates the shooter name of the selected clip. You can edit it by clicking or tapping. The following message will be displayed when the P2 card is write protected.



A maximum of 30 alphanumeric (1 byte) characters or 10 Japanese (2 bytes) characters can be entered. Entry exceeding this limit will be notified by the following message. Delete some of the characters.



2 [User Clip Name]

Indicates the name of the user clip of the selected clip. You can edit it by clicking or tapping. The same message as in “1: [Shooter]” will be displayed when the card is write protected. Entry exceeding 100 alphanumeric (1 byte) characters or 33 Japanese (2 bytes) characters will be notified by the same message. Delete some of the characters.

3 [Shot Mark]

You can add a shot mark to the selected clip to easily identify if the cut has been OK or NG. The same message as in “1: [Shooter]” will be displayed when the card is write protected. You can switch on and off by clicking or tapping it.

4 [Program Name]

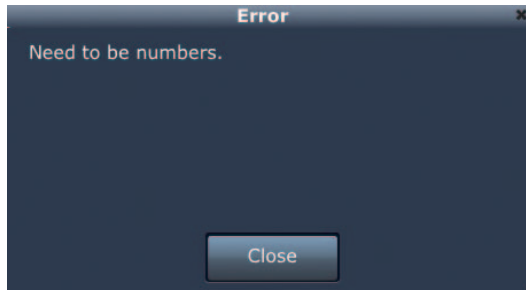
Indicates the program of the selected clip. You can edit it by clicking or tapping. The same message as in “1: [Shooter]” will be displayed when the card is write protected. Entry exceeding 100 alphanumeric (1 byte) characters or 33 Japanese (2 bytes) characters will be notified by the same message. Delete some of the characters.

5 [Place Name]

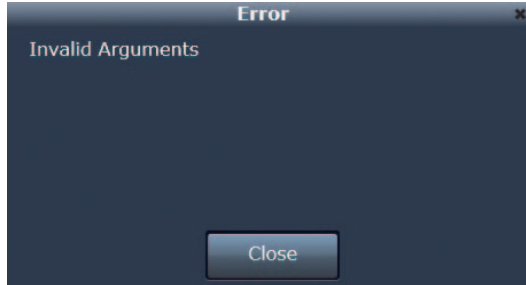
Indicates the shooting location of the selected clip. You can edit it by clicking or tapping. The same message as in “1: [Shooter]” will be displayed when the card is write protected. Entry exceeding 100 alphanumeric (1 byte) characters or 33 Japanese (2 bytes) characters will be notified by the same message. Delete some of the characters.

6 [Scene No.]

Indicates the scene number of the selected clip. You can edit it by clicking or tapping. The same message as in “1: [Shooter]” will be displayed when the card is write protected. A positive integer with a maximum of 10 digits can be entered. Entry of characters other than numerics will be notified by the following error message. Enter numeric characters.

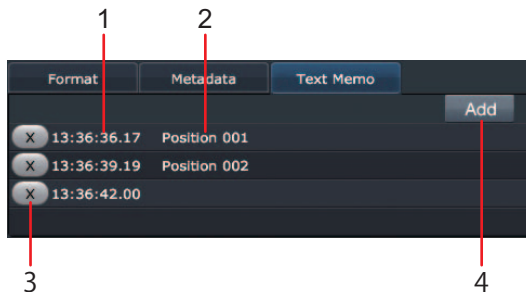


Entry of numerics of zero or less, or 11 digits or more will be notified by the following error message. Enter a value within the range.



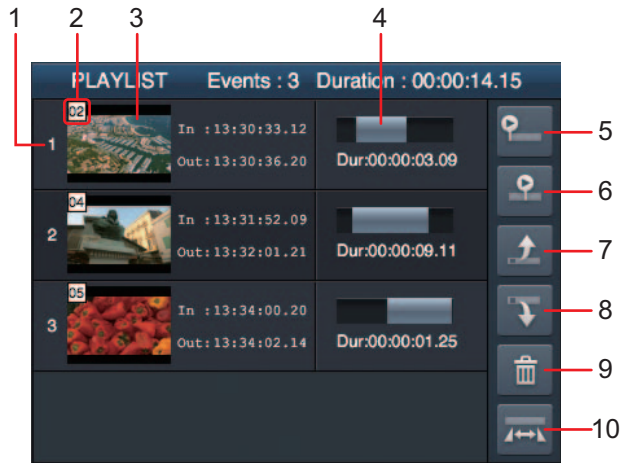
- 7 **[Take No.]**  
Indicates the number for the take of the selected clip. You can edit it by clicking or tapping. The same message as in “1: [Shooter]” will be displayed when the card is write protected. Entry of characters other than numerics, numerics with zero or less, or 11 digits or more will be notified by the same message as in “6: [Scene No.]”. Deal with the problem in the same way.
- 8 **[Reporter]**  
Indicates the reporter name of the selected clip. You can edit it by clicking or tapping. The same message as in “1: [Shooter]” will be displayed when the card is write protected. Entry exceeding 30 alphanumeric (1 byte) characters or 10 Japanese (2 bytes) characters will be notified by the same message. Delete some of the characters.
- 9 **[Purpose]**  
Indicates the shooting purpose of the selected clip. You can edit it by clicking or tapping. The same message as in “1: [Shooter]” will be displayed when the card is write protected. Entry exceeding 100 alphanumeric (1 byte) characters or 30 Japanese (2 bytes) characters will be notified by the same message. Delete some of the characters.
- 10 **[Object]**  
Indicates the shooting object of the selected clip. You can edit it by clicking or tapping. The same message as in “1: [Shooter]” will be displayed when the card is write protected. Entry exceeding 100 alphanumeric (1 byte) characters or 30 Japanese (2 bytes) characters will be notified by the same message. Delete some of the characters.
- 11 **[Creator]**  
Indicates the creator of the selected clip. You can edit it by clicking or tapping. The same message as in “1: [Shooter]” will be displayed when the card is write protected. Entry exceeding 30 alphanumeric (1 byte) characters or 10 Japanese (2 bytes) characters will be notified by the same message. Delete some of the characters.
- 12 **[Last Update Person]**  
Indicates the person who last updated the selected clip. You can edit it by clicking or tapping. The same message as in “1: [Shooter]” will be displayed when the card is write protected. Entry exceeding 30 alphanumeric (1 byte) characters or 10 Japanese (2 bytes) characters will be notified by the same message. Delete some of the characters.

■ **[TextMemo] tab**



- 1 **Time code of the position where text memo is added**  
Indicates the time code value of the position where a text memo is added.
- 2 **Text memo**  
Indicates the content of text memo.
- 3 **Delete button**  
Clicking or tapping this button deletes the text memo in the field.
- 4 **Add text memo button**  
Clicking or tapping this button adds a new text memo to the current playback position of the clip being played back on the [Player] panel. A maximum of 100 alphanumeric (1 byte) characters or 33 Japanese (2 bytes) characters can be entered for a text memo. The same message as in “1: [Shooter]” will be displayed when the card is write protected. Entry exceeding 100 alphanumeric (1 byte) characters or 33 Japanese (2 bytes) characters will be notified by the same message. Delete some of the characters.

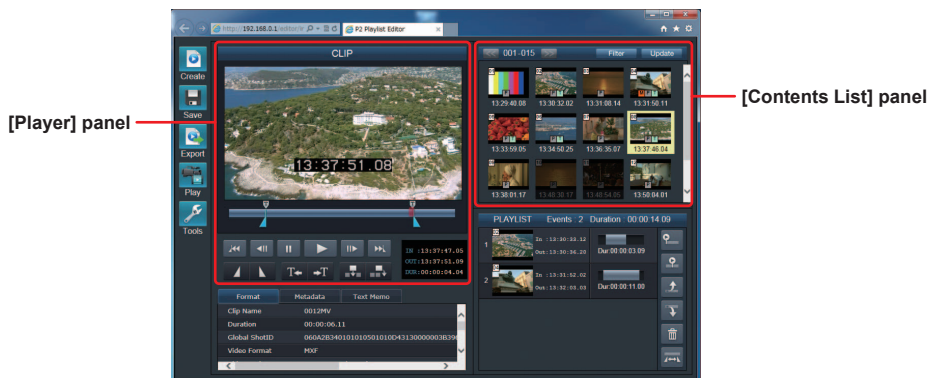
[Playlist] panel



The [Player] panel shows playlist contents created with the Web application for playlist editing.

- 1 Event number**  
Indicates the number for the order for playback in the playlist. Clicking or tapping this part selects an event in the playlist.
- 2 Clip number**  
Indicates the number that the P2 Cam has given to the source clip of the event. This number is identical with the clip number displayed on the [Contents List] panel.
- 3 Thumbnail image**  
Displays the thumbnail image of the source clip of the event.
- 4 Selected range display**  
Indicates the time code of the In and Out points and the duration of the event. Clicking or tapping this part enables to modify the In and Out points. For details, see “Modifying registered events” (page 30).
- 5 Preview button**
- 6 Preview button with offset**  
Clicking or tapping this button performs preview of the playlist on the [Player] panel. For details, see “Previewing playlists” (page 31).
- 7 Move back event button**
- 8 Move forward event button**  
Clicking or tapping this button with an event selected enables to move the playback order in the playlist.
- 9 Delete event button**  
Clicking or tapping this button with an event selected deletes the event from the playlist.
- 10 Re-edit event button**  
Clicking or tapping this button with an event selected enables to re-edit the In and Out points of the event on the [Player] panel. However, clips without proxy cannot be re-edited.

Registering to playlist



You can specify In and Out points to clips stored on the P2 card and register them to a playlist as events.


**1 Select a clip on the [Contents List] panel.**

The selected clip is loaded on the [Player] panel and the related metadata are loaded on the [Metadata] panel. The player status of the [Player] panel shows [CLIP].

**NOTE**

- Immediately after selecting a clip on the [Contents List] panel, the In point is at the top of the clip, and the Out point is at the end of the clip.

**2 Start playback of the clip on the [Player] panel.**

Click or tap the playback button  to perform playback of the clip on the [Player] panel. You can move the slider on the seek bar during playback to move the playback position to any point.

**NOTE**

- If the clip consists of multiple video files in the P2 card, playback may be paused for several seconds at the transition parts.

**3 Click or tap the set in button [icon] when the player shows the point to be set as the start point of the event.**

[icon] moves on the seek bar and the In point is set. The In point can be reset as many times as you want. However, the In point cannot be set on a point later than the Out point.

**4 Click or tap the set out button [icon] when the player shows the point to be set as the end point of the event.**

[icon] moves on the seek bar and the Out point is set. The Out point can be reset as many times as you want. However, the Out point cannot be set on a point earlier than the In point.

**5 Click or tap the add event button (to the last of playlist), to add the event to the playlist.**

Clicking or tapping the add event button (to the last of playlist) [icon] adds the event modified on steps 1 to 4 to the last of the playlist.

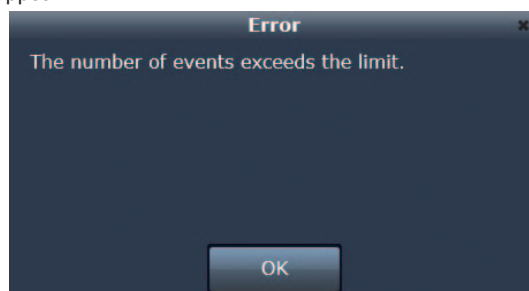
**NOTE**

Clicking or tapping the add event button (in the middle of playlist) [icon] adds the event modified on steps 1 to 4 to a desired point between events in the playlist. To perform this operation, click or tap the add event button (in the middle of playlist), and then click or tap a space between two events on the [Playlist] panel.

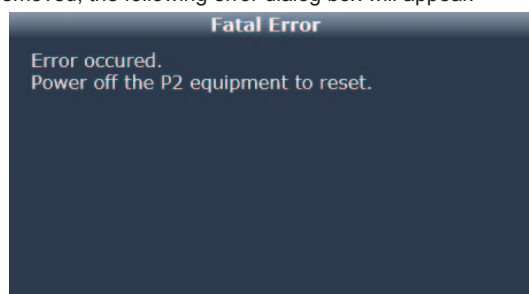
**6 Complete the playlist by repeating steps 4 to 5.**

**NOTE**

A maximum of 100 events can be registered in a playlist. However, the maximum number may be less than 100, depending on the number of clips of each event (the number of video files in the P2 card). If the number of registered events has reached the maximum, the following error dialog box will appear.



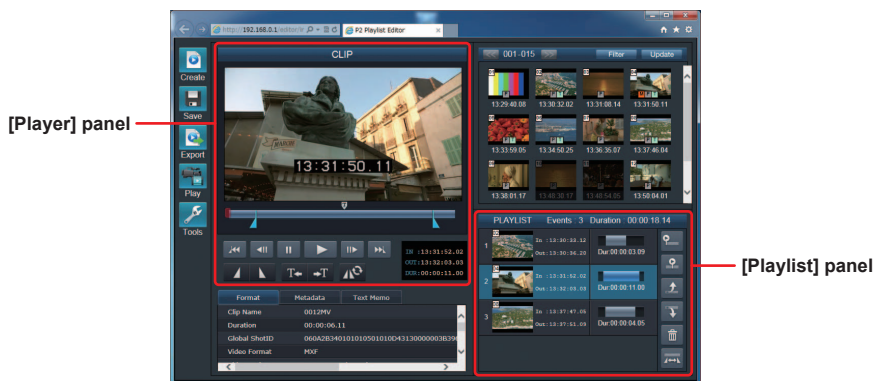
You cannot remove a P2 card from the P2 Cam during the operation of the playlist editing function. If the P2 card has been removed, the following error dialog box will appear.



If the error has occurred by removing the card, you cannot continue the editing operation. However, the playlist being edited will be saved on the computer or mobile device temporarily.

Restart the P2 Cam and activate the playlist editing function.

**Modifying registered events**



The positions of In and Out points of events registered in playlists can be modified.

**1 Click or tap a registered event on the [Playlist] panel to select it, and then click or tap the button for modifying event [icon].**

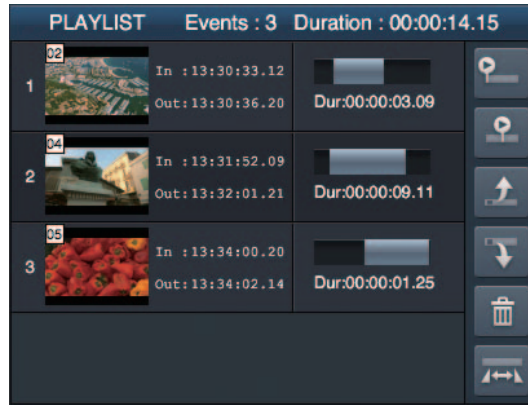
The clip including the event will be loaded on the [Player] panel, and the current In and Out points are indicated on the seek bar.

**2 On the [Player] panel, reset the In and Out points by using the set in button [icon] and set out button [icon].**

**3 Click or tap the re-register event button [icon].**

The range of the event selected in step 1 will be updated and reflected on the [Playlist] panel.

Previewing playlists



You can preview the created playlist contents on the [Player] panel by the following procedure.

**1 Click or tap the preview button on the [Playlist] panel.**

The player status of the [Player] panel shows [PLAYLIST], and the playlist contents are played back on the player screen from the beginning.

**2 To stop the preview in the middle, click or tap the stop button on the [Player] panel.**

The preview operation stops, and the player screen on the [Player] panel shows a black screen.

**NOTE**

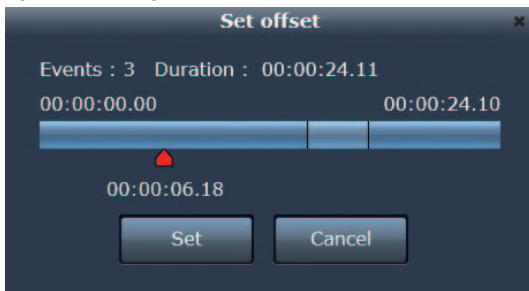
- It may take several seconds after clicking or tapping the preview button until the playback starts on the [Player] panel. Meanwhile, the player screen on the [Player] panel shows a black screen.
- You cannot use the seek bar to move the playback start point, perform frame forward, or pause during the playlist preview operation. To preview a specified point of the playlist, use the function described in "Previewing playlists by specifying offset" (page 31).
- After the preview ends, you can proceed to add events to the playlist by the procedure described in "Registering to playlist" (page 29). If a clip is selected on the [Contents List] panel, the player status of the [Player] panel shows [CLIP].

Previewing playlists by specifying offset

You can specify the start point of playback of the playlist when you perform preview by the following procedure.

**1 Click or tap the preview with offset button on the [Playlist] panel.**

The player status of the [Player] panel shows [PLAYLIST], and a dialog box for setting the offset appears.



**2 On the set offset dialog box, click or tap the offset bar to specify the start point of preview.**

moves to the position where you have clicked or tapped. You can specify the playback start point, referring to the event transitions and duration indicated in the figure.

**3 Click or tap [Set] on the set offset dialog box.**

Playback of the playlist starts on the player screen of the [Player] panel from the specified start point.

**4 To stop the preview in the middle, click or tap the stop button on the [Player] panel.**

The preview operation stops, and the player screen on the [Player] panel shows a black screen.

## Saving playlist to P2 card

### Saving new playlist

You can save the created playlist as a playlist file to the P2 card inserted to the P2 Cam.

#### NOTE

- If more than 100 playlist files have been stored on the P2 card inserted to the P2 Cam, a new playlist file cannot be saved. In this case, use the function described in Deleting playlist file (page 33) to delete unnecessary playlists on the P2 card.
- Playlist files that are saved in an SDHC or SDXC card using the microP2 card adapter (such as AJ-P2AD1G) cannot be read on P2 devices that support playlist functions.

#### 1 Click or tap the [Save] button of the [Menu] panel.

Sub buttons are displayed on the right of the clicked button.

#### 2 Click or tap the [Save As] button among the sub buttons.

A dialog box to enter the saving destination and user playlist name of the playlist file appears.



#### 3 Enter the slot number of the P2 Cam to be the saving destination and user playlist name of the playlist file.

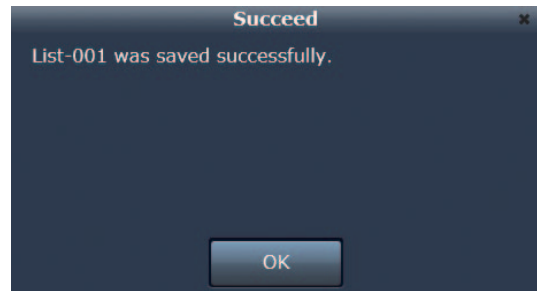
A maximum of 100 alphanumeric (1 byte) characters or 33 Japanese (2 bytes) characters can be entered for a user playlist name.

#### NOTE

- Playlist files are created in the EDITLIST folder on the P2 card. The file name used at the time is automatically given by the P2 Cam and cannot be changed. The user playlist name entered in step 3 is one of the information recorded in the playlist file, and is not associated with the file name in the P2 card. If the file name of a playlist file has been changed on a computer, etc., the file cannot be read.

#### 4 Click or tap [SAVE].

When the file has been saved successfully, the following dialog box appears. The dialog box shows the file name that is used for saving the playlist file on the P2 card.



### Overwriting playlist

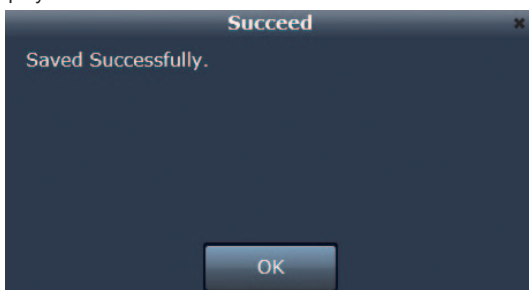
You can overwrite a playlist file by the following procedure when a playlist file is loaded for editing or a playlist has already been saved on the P2 card. If the playlist has never been saved, save it as a new playlist.

#### 1 Click or tap the [Save] button of the [Menu] panel.

Sub buttons are displayed on the right of the clicked button.

#### 2 Click or tap the [Overwrite] button among the sub buttons.

When the file has been saved successfully, the following dialog box appears. The dialog box shows the file name that is used for saving the playlist file on the P2 card.





## Deleting playlist file

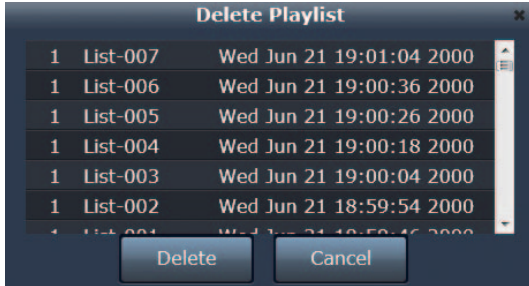
You can delete a playlist file stored on the P2 card.

**1 Click or tap the [Save] button  of the [Menu] panel.**

Sub buttons are displayed on the right of the clicked button.

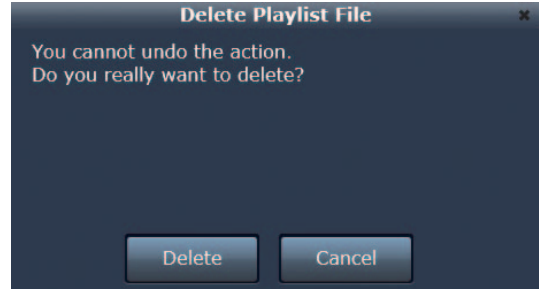
**2 Click or tap the [Delete] button  among the sub buttons.**

A dialog box that includes the list of playlist files appears. The list of playlist files shows the slot numbers, user playlist names, and creation date and time of playlists stored on the P2 card. User playlist names are shown in blank if not set.



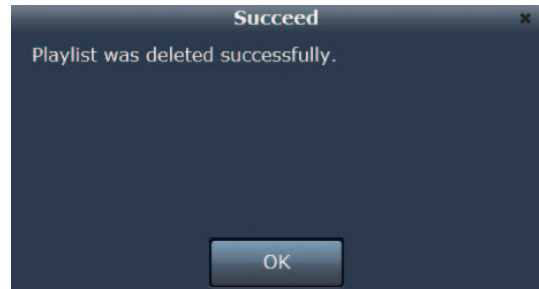
**3 Click or tap a playlist file to be deleted to select it, and press [Delete].**

A dialog box for confirmation of deleting the playlist file appears.




**4 Click or tap [Delete] on the confirmation dialog box.**

If the file has been successfully deleted, the following message appears, and the dialog box closes automatically.



## Opening playlist file

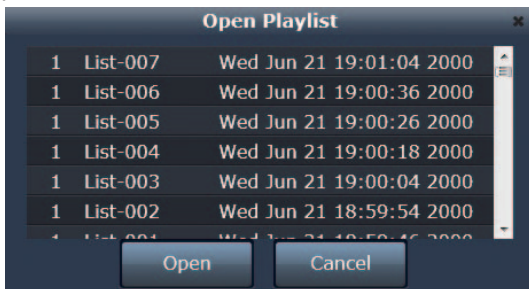
You can load a playlist file saved on an P2 card to be replaced with the currently edited playlist contents.

**1 Click or tap the [Create] button  of the [Menu] panel.**

Sub buttons are displayed on the right of the clicked button.

**2 Click or tap the [Open] button  among the sub buttons.**

A dialog box that includes the list of playlist files appears. The list of playlist files shows the slot numbers, user playlist names, and creation date and time of playlists stored on the P2 card. User playlist names that are automatically given by P2 devices are shown if user playlist names are not set.

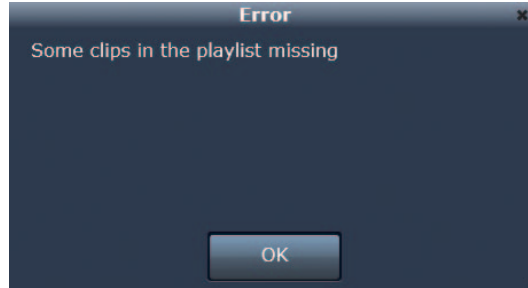


**3 Click or tap a playlist file to be loaded to select it, and press [Open].**

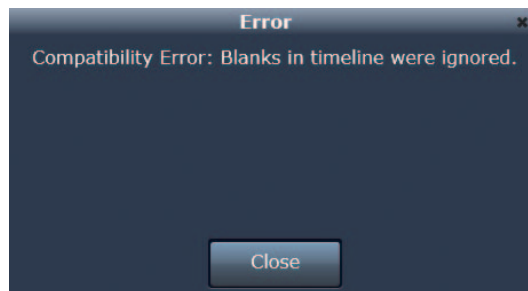
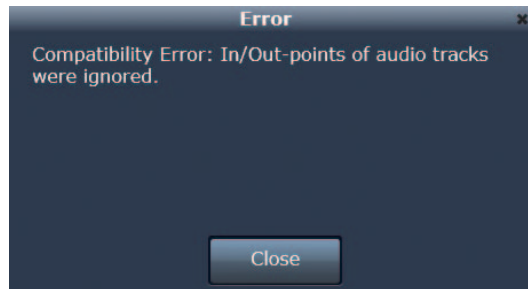
The selected playlist file is loaded and the [Playlist] panel is updated. At this moment, no data is loaded on the [Player] panel and [Metadata] panel.

 **NOTE**

- Loading of a playlist will fail and the following error message appears if the loaded playlist includes an event with recording format and frame rate that do not match those set for the P2 Cam immediately before starting the operation of the playlist editing function.

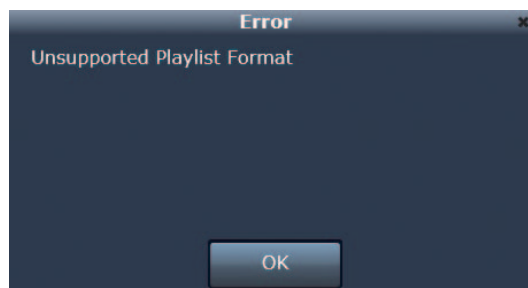


- An error as in the following may occur if the loaded playlist has been created with an application other than the Web application for playlist editing of AG-SFU604G.
  - For a playlist file created with AJ-HPM200/AJ-HPD2500, when a file with different In and Out points between the video and audio tracks, or a file consisted of different clips for video and audio of one track is loaded, the following error message appears.



In this case, In and Out points of the video track are prioritized and the In and Out points of the audio track are ignored. In addition, audio level adjustment, audio channel switching, audio track information for voice-over, and start time code settings are ignored.

- When a playlist created with AJ-SPD850/AJ-HPM100/AJ-HPM110/AJ-HPS1500 is loaded, the following error message appears, and loading of playlist fails.



## Playing back playlist on the P2 Cam

You can play back the created playlist contents on the P2 Cam. The playback images are output also from the viewfinder, <SDI OUT/IN (OP)> terminal, <MON OUT> terminal, and <HDMI> terminal of the P2 Cam.

### Playing playlist on the P2 Cam from the beginning

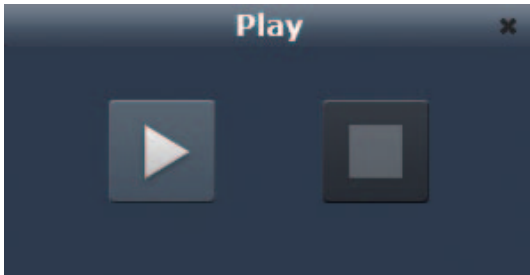
You can play back the playlist contents on the P2 Cam from the beginning.

**1** Click or tap the [Play] button  of the [Menu] panel.

Sub buttons are displayed on the right of the clicked button.

**2** Click or tap the [Play] button  among the sub buttons.

A control dialog box to control playback with the P2 Cam appears.



**3** Click or tap the playback button on the control dialog box.

The playlist contents are played back on the P2 Cam from the beginning.

 **NOTE**

- If [Playlist Autoplay] in [Tools] on the [Menu] panel is set to [YES], playback on the P2 Cam starts without performing step 3.  
For details, see “[Playlist Autoplay]:” (page 23).

**4** To stop the playback in the middle, click or tap the stop button on the control dialog box.

Playback operation on the P2 Cam stops, and the control dialog box closes automatically.

**5** When playback on the P2 Cam ends, click or tap the stop button or [x] on the control dialog box to close the dialog box.

### Previewing playlists with specified offset on the P2 Cam

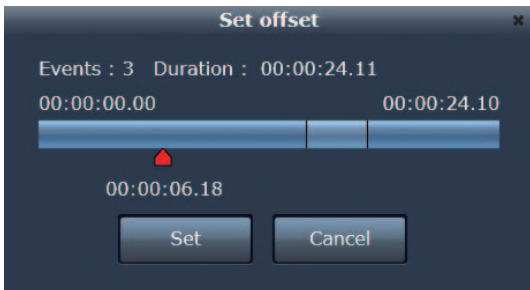
You can specify the playback start point of the playlist and play it back on the P2 Cam.

**1** Click or tap the [Play] button  of the [Menu] panel.


Sub buttons are displayed on the right of the clicked button.

**2** Click or tap the [Offset Play] button  among the sub buttons.

Set offset dialog box appears.



**3** On the set offset dialog box, click or tap the offset bar to specify the start point of playback.

 moves to the position where you have clicked or tapped. You can specify the playback start point, referring to the event transitions and duration indicated in the figure.

**4** Click or tap [Set] on the set offset dialog box.

A control dialog box to control playback with the P2 Cam appears.

**5** Click or tap the playback button on the control dialog box.

The playlist contents are played back on the P2 Cam from the specified start point.

 **NOTE**

- If [Playlist Autoplay] in [Tools] on the [Menu] panel is set to [YES], playback on the P2 Cam starts without performing step 5.  
For details, see “[Playlist Autoplay]:” (page 23).

**6** To stop the playback in the middle, click or tap the stop button on the control dialog box.

Playback operation on the P2 Cam stops, and the control dialog box closes automatically.


**7** When playback on the P2 Cam ends, click or tap the stop button or [x] on the control dialog box to close the dialog box.

 **NOTE**


- For playlist playback, the time code is output as a sequence, substituting the first frame of the playlist to 00:00:00:00.
- For audio output of the transition parts of events, volume fading is applied.
- If the control dialog box has been closed by [x] during playback of a playlist on the P2 Cam, the playback of the playlist on the P2 Cam also ends automatically.
- If the <STOP> button (stop) on the P2 Cam has been pressed during playback of a playlist on the P2 Cam, the playback stops. Operations other than the <STOP> (stop) button, such as <◀◀/REW> (fast rewind) or <FF/▶▶> (fast forward), are invalid.

## Creating a new clip from playlist (edit copy)

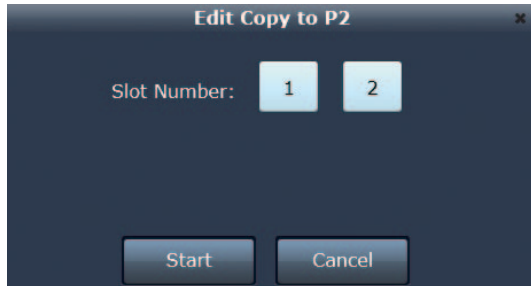
You can create a new clip from a playlist. This function is called edit copy. The Web application for playlist editing supports the edit copy function.

**1** Click or tap the [Export] button  of the [Menu] panel.

Sub buttons are displayed on the right of the clicked button.

**2** Click or tap the [Edit Copy] button  among the sub buttons.

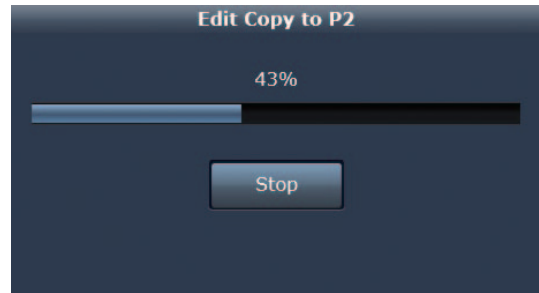
A dialog box to make settings of edit copy appears.



- [Slot Number]: Specifies the slot number of the P2 Cam in which the P2 card to be the saving destination of newly created clips with edit copy is inserted.

**3** Click or tap [Start] on the edit copy dialog box.

Edit copy starts.

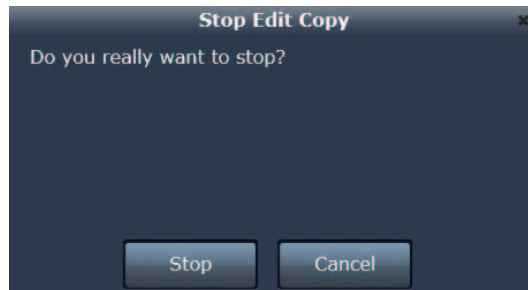


**4** A progress dialog box appears, and then indicates a message when the edit copy ends. Click or tap [OK] to close the dialog box.

The clip created by edit copy is added on the [Contents List] panel.

**NOTE**

- Clicking or tapping [Stop] on the progress dialog box stops edit copy operation.



- Proxy video cannot be added on a new clip created with edit copy.
- Edit copy to multiple P2 cards cannot be performed.
- A text memo is automatically added on the edit point (the beginning of each event) of the clip created with edit copy.
- Information other than the user clip name are not copied by edit copy.
- If the estimated size of the clip created with edit copy is larger than the remaining capacity of the P2 card inserted in the P2 Cam, the following error message appears, and edit copy fails.



- The audio of the clip created with edit copy is 1CH to 4CH.
- The time code of the clip is output as a sequence, substituting the first frame of the playlist to 00:00:00:00.
- For audio output of the transition parts of events, volume fading is applied.

## Exporting playlist

You can export events registered in a playlist to a P2 card. If export has been performed, a playlist file is also created on the export destination automatically.

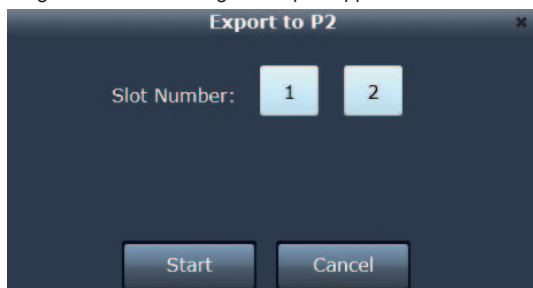
When exporting a playlist, the whole range of the source clip is not exported. The ranges specified as events and two seconds before and after the range is divided and exported.

**1** Click or tap the [Export] button  of the [Menu] panel.

Sub buttons are displayed on the right of the clicked button.

**2** Click or tap the [Playlist Export] button  among the sub buttons.

A dialog box to make settings for export appears.



- [Slot Number]: Specifies the slot number of the P2 Cam in which the P2 card to be the export destination is inserted.

**3** Click or tap [Start] on the export dialog box.

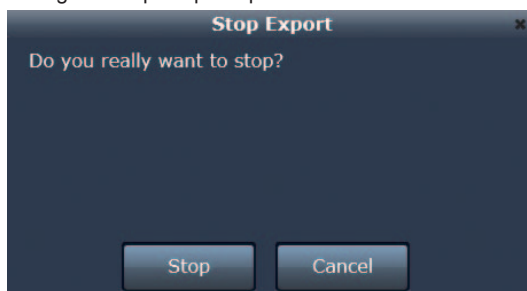


**4** A progress dialog box appears, and then indicates a message when the export of the playlist ends. Click or tap [OK] to close the dialog box.

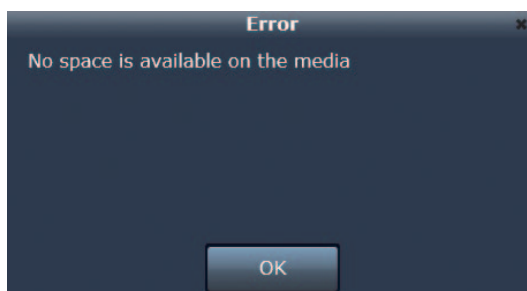
The clip created by playlist export is added on the [Contents List] panel.

### NOTE

- Clicking or tapping [Stop] on the progress dialog box stops export operation.



- When there is no two-second data before or after the range, export is performed with the possible length of the existing data.
- Proxy video cannot be added on a new clip created with playlist export.
- If the estimated size of the created clip is larger than the remaining capacity of the export destination, the following error message appears, and export fails.



- Export to multiple P2 cards cannot be performed.
- When exporting files that has been saved in an SDHC or SDXC card using the microP2 card adapter (such as AJ-P2AD1G), exported source files can be read, but exported playlist files cannot be read on P2 devices that support playlist functions.

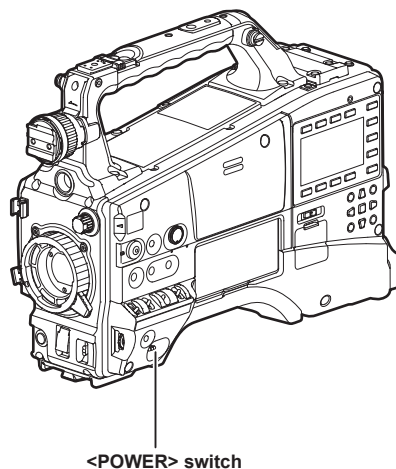
## Exiting playlist editing function

Perform the exit operation of the playlist editing function by one of the following procedures.

### Exiting by turning off the power of P2 Cam

**1** Exit the Web browser.

**2** Turn off the <POWER> switch of the P2 Cam.



#### NOTE

- If the P2 Cam is turned on using its switch after step **2**, the P2 Cam starts up with the playlist editing function not running.

### Exiting using the <USER> button

**1** Exit the Web browser.

**2** Press the <USER> button of the P2 Cam where the playlist editing function has been allocated.

#### NOTE

- To exit the playlist editing function using the <USER> button, the playlist editing function must be allocated on the <USER> button of the P2 Cam beforehand.  
For details, see "Activating the playlist editing function." (page 21).

## Glossary

Terms	Description
LAN	Abbreviation of Local Area Network. It means relatively smaller network area such as an in-house network.
DHCP (dynamic)	Abbreviation of Dynamic Host Configuration Protocol. This function assigns IP addresses to the connected devices automatically. If a device with the DHCP server function exists within the LAN, IP addresses are assigned to the connected devices automatically.
Static	The connection method that does not use DHCP. The user sets fixed IP addresses for network connection. If you have fixed addresses given by the network administrator, use this method.
IP address	It means the destination of data transmission via network. IP (InternetProtocol) is the protocol for data transmission, and an identical IP address cannot be assigned to another device within the same network.
MAC address	An identical ID number for a network adapter. Each of the network adapters in the world has an identical number, with which the data transmission between adapters are executed. It consists of the combination of an identical number for a manufacturer that is managed and assigned by IEEE and a number that the manufacturer itself assigns to the adapter.
Network address	In the bit string that forms an IP address, it is the part where the subnet mask has set "1" in binary numbers. When the IP address is [192.168.0.1] and the subnet mask is [255.255.255.0], [192.168.0] is the part.
Host address	In the bit string that forms an IP address, it is the part where the subnet mask has set "0" in binary numbers. When the IP address is [192.168.0.1] and the subnet mask is [255.255.255.0], [1] is the part.
SSID	Abbreviation of Service Set ID. For wireless LAN, setting of an identification code called SSID is required to be identified if it is the access point to be accessed or not. Some wireless LAN adapter products may call it as "ESSID" or "network name".
WPA2	It is an abbreviation of Wi-Fi Protected Access, and means a method to encrypt data to be transmitted. It creates encryption keys to be notified only to the receiver of the data, preventing third parties from reading the data.
Subnet mask	A large network may be divided into multiple smaller networks called subnets for management. Subnet mask means the value to divide the IP address in this case.

