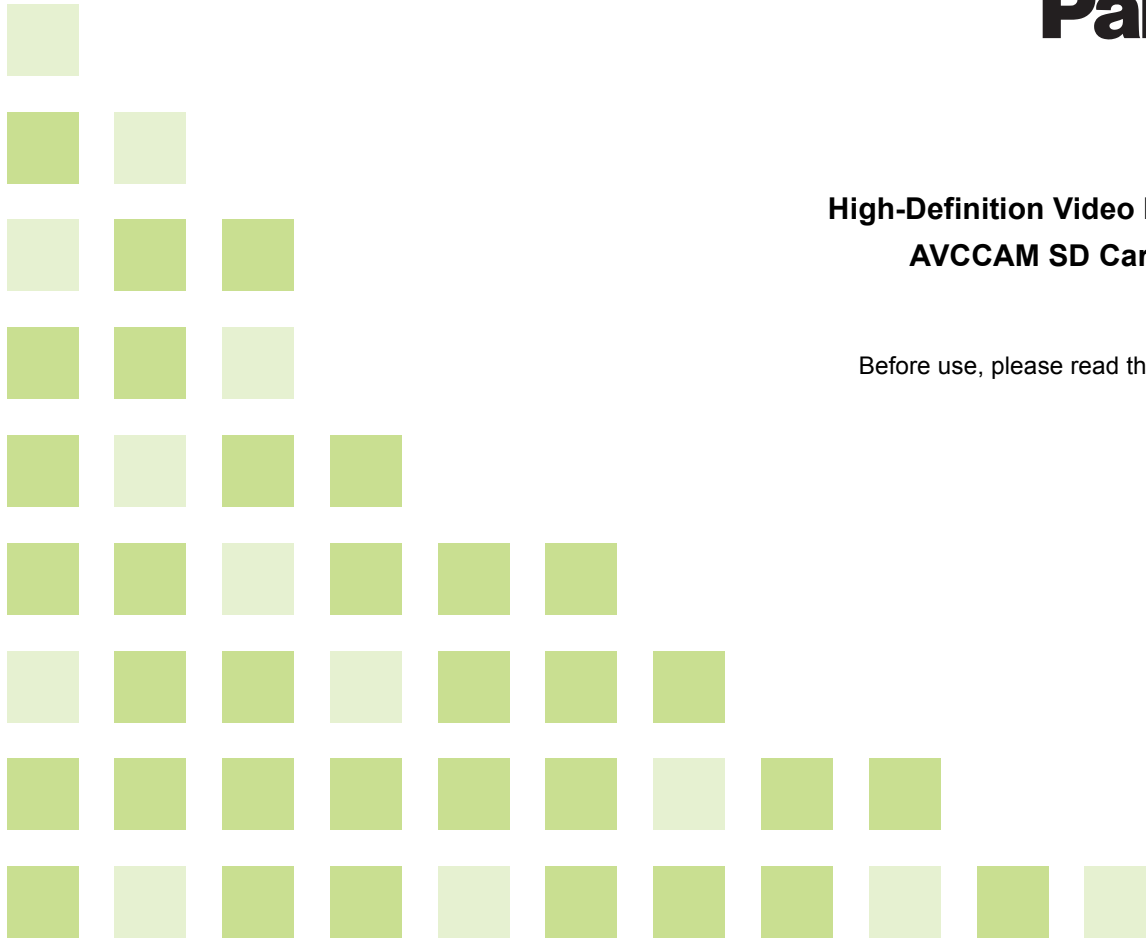


User Guide

High-Definition Video Recovering Software AVCCAM SD Card File Recovery V1.3 for Macintosh®

Before use, please read these instructions completely.



Before Use

Introduction 3

Overview 4

 What can AVCCAM Recovery do? 4

 System requirements 5

Operation

Start Up and Shut Down of AVCCAM Recovery 6

 To check the recovered file 8

 To close the software 9

Before Use

Introduction

■ Contents of this user guide

- The description of Macintosh® in this user guide is based on the Mac OS X 10.8 screen.
- Please note that the explanations and screen images in this user guide may differ from the actual explanations and screen images due to version of the software and the use environments of personal computers.

■ Terms used in this user guide

- In this user guide, the AVCCAM SD Card File Recovery is referred to as “AVCCAM Recovery”.

■ Copyright

- The recorded and/or edited content is for personal use only and may not be reproduced or copied without prior consent.
- Macintosh® and Mac OS X are trademarks of Apple Inc., registered in USA and other countries.
- Intel® and Core™ are registered trademarks or trademarks of Intel Corporation in the United States and the other countries.
- “AVCHD” and the “AVCHD” logo are trademarks of Panasonic Corporation and Sony Corporation.
- Apple product screen shot(s) reprinted with permission from Apple Inc.

Overview

What can AVCCAM Recovery do?

AVCCAM Recovery is a software program used for recovering files recorded on SD cards with AVCCAM.

- ❖ The software mainly targets inconsistent data created under the following conditions.
 - Right after you have deleted clips, pictures with the main unit
 - Right after you have deleted files with a Windows PC

- Note that it will not always be possible to recover the data using this software.
- Operation of this software has only been confirmed for Panasonic SD/SDHC/SDXC cards. Since operation has not been confirmed for third-party SD/SDHC/SDXC cards, we may not be able to support operation when third-party SD/SDHC/SDXC cards are used.
- Panasonic assumes no responsibility whatsoever for damages incurred from the use of this software by customers or other parties (including loss of data).
- For details about how to use camera-recorder, see the operating instruction.
- For some inconsistencies, it will not be possible to recover the index, the shot mark, and other meta-data.
- Clips which are the result of continuous recording over a long period may be split into a number of clips for recovery.

- Recovery may also be possible even in cases that are not immediately after processing.
- Files might be recovered right after you have formatted cards in the DV mode of the AG-HMC80 series.
- Files are not recovered after you have formatted cards in the AVCHD mode of AVCCAM or the DV mode of AVCCAM except AG-HMC80 series.
- If you have restored AG-3DA1 files, they will not be in a format that can be played back with the AVCCAM Restorer as L/R information is not restored. Please use an application that can playback MTS files.
- There are occasions when data copied to SD cards using a PC etc. cannot be recovered even when the data was generated with the AVCCAM.
- Operation of this software is only confirmed for SD cards recorded with the AVCCAM series. Since operation has not been confirmed for SD cards recorded with other devices, we may not be able to support operation for SD cards recorded with other devices.

System requirements

■ AVCCAM SD Card File Recovery

CPU of Personal computer	Intel® Core™ Duo 2.0 GHz or higher CPU (including compatible CPU)
OS	Pre-installed Mac OS X 10.8 (Intel Mac)

- Even if the system requirements mentioned in this user guide are fulfilled, some personal computers cannot be used.
- When devices are connected through USB hubs or by using extension cables, proper operation is not guaranteed.
- Operation is not guaranteed in a multi-boot environment.
- Log on with an administrator account before using this software.
When starting this software, administrator account password is required.
- Operation on a multi-monitor system is not guaranteed.
- The operation of this software is not guaranteed if the drive or folder targeted for restoration is simultaneously accessed by other software. Be sure that any other software has finished its operations before using this restoration software.
- This software will only run on personal computers having an internal clock set to times after 0.00 on January 1, 1970. On personal computers having a clock which is set to any time outside this range, the software may run abnormally, or fail to run at all.

Operation

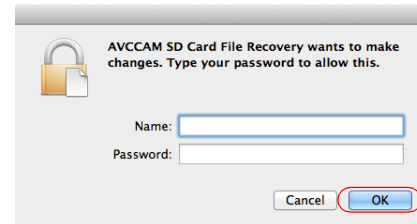
Start Up and Shut Down of AVCCAM Recovery

■ Recovering the files on SD/SDHC/SDXC memory card.

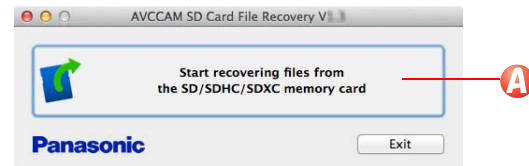
- ❖ When the personal computer has an SD card slot, insert the SD card into the slot. Alternatively, connect the computer to a USB card reader with the SD card inserted (see the respective operating instructions for how to connect the card reader and personal computer).
- ❖ Please lock SD card's write-protect switch before setting SD card. When SD card does not lock the write-protect switch, it will not be recovery or will delete the number of recovered data for some inconsistencies.
- ❖ It is also possible to restore data on an SD card inserted into a camera-recorder that is connected to the computer (see the camera-recorder operating instructions for details about how to connect the camera-recorder to the personal computer).

1 Double click, AVCCAM Recovery application.

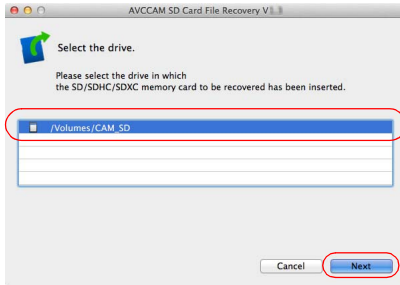
2 Enter administrator account name and password, then click [OK].



3 Click **A**.

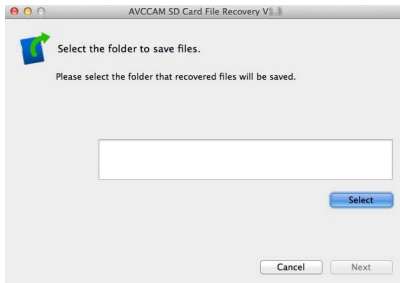


4 Select the connected SD card drive and then select [Next].



Other removable drives such as floppy disc drives, CD drives, and DVD drives are displayed.

5 Select a location to save the recovered files.

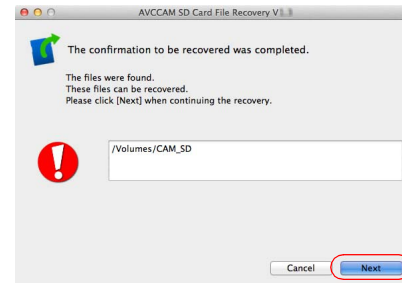


6 When you select [Next], analysis of the SD card will begin.

When empty space at the save destination is less than the total space of the SD card (32 GB for a 32 GB card), then analysis will not begin. Try again after ensuring that there is enough free space. And the analytical time becomes long according to the total space of SD card.

- The results of analysis may mean that the total data is more than the total space of the SD card.

7 When data for recovery is found, a confirmation message is displayed. Click on [Next] to proceed.



Recovery begins.

8 When the window indicating that recover has finished is displayed, click [Finish] to return to the start-up window.

To check the recovered file

1 Check the save destination folder.

- AVCHD files, DV files and picture files will be recovered at the same time.
- When you have recovered AVCHD files, in order for the recovered files to comply with AVCHD standards, a repair process with AVCCAM Restorer must be carried out as post-processing. Perform Step 2 below.
- Note that recovered DV files may not play back with the AVCCAM. Check in Step 3.
- When picture files have been recovered, a DCIM folder is created within the destination folder, and beneath that a subfolder is created into which the picture files (JPEG) are saved. If there is no DCIM folder present in the destination folder, no subfolders beneath that, or there are no files present in the DCIM folder or subfolders then the restore operation has been unsuccessful.
- When checking recovered pictures using the camera-recorder, copy the contents of the \DCIM folder within the save destination folder on to an SD/SDHC/SDXC card formatted using the camera-recorder, then check the pictures using the picture playback mode of a camera-recorder that supports picture recording.

2 Procedures for AVCHD files

1) Check recovered files in the save destination folder.

In the save destination folder, check that **PRIVATE\AVCHD\BDMV\STREAM** has files with the MTS extension. If there are no files, AVCHD files could not be recovered.

2) Copy the recovered files.

Copy recovered files (under PRIVATE in the save destination folder) to an SD/SDHC/SDXC card formatted with the camera recorder.

3) Make the recovered files comply with AVCHD standards.

(Be sure to do this. If you do not, files cannot be played back with the camera recorder)

Start AVCCAM Restorer, and repair the SD/SDHC/SDXC card copied in 2).

(For details on AVCCAM Restorer operation, see the AVCCAM Restorer User Guide. AVCCAM Restorer can be downloaded for free from the Panasonic WEB site

<<http://pro-av.panasonic.net>>. For details, see “Service and Support” on the site)

4) Check the playback.

After the operation, check the playback with the camera recorder in AVCHD mode.

3 Procedures for DV files

- 1) **Check recovered files in the save destination folder. In the save destination folder, check that PRIVATE\MEIGROUP\SBGDVSD\VIDEO has AVI files. If there are no files, DV files could not be recovered.**

When you use image files on your PC, use this AVI file. You can also confirm playback with QuickTimePlayer.

- 2) **Copy the recovered files. Copy recovered files (under PRIVATE in the save destination folder) to an SD/SDHC card formatted with the camera recorder.**
- 3) **Check the playback. Check the playback with the camera recorder in DV mode. Repair may not work depending on the state of the file. In this case, clips cannot be displayed on the thumbnail screen. You also cannot playback.**

To close the software

Click the [Exit] button in the lower right portion of the start-up window.

Panasonic Corporation

Web Site: <http://panasonic.net>

© Panasonic Corporation 2010