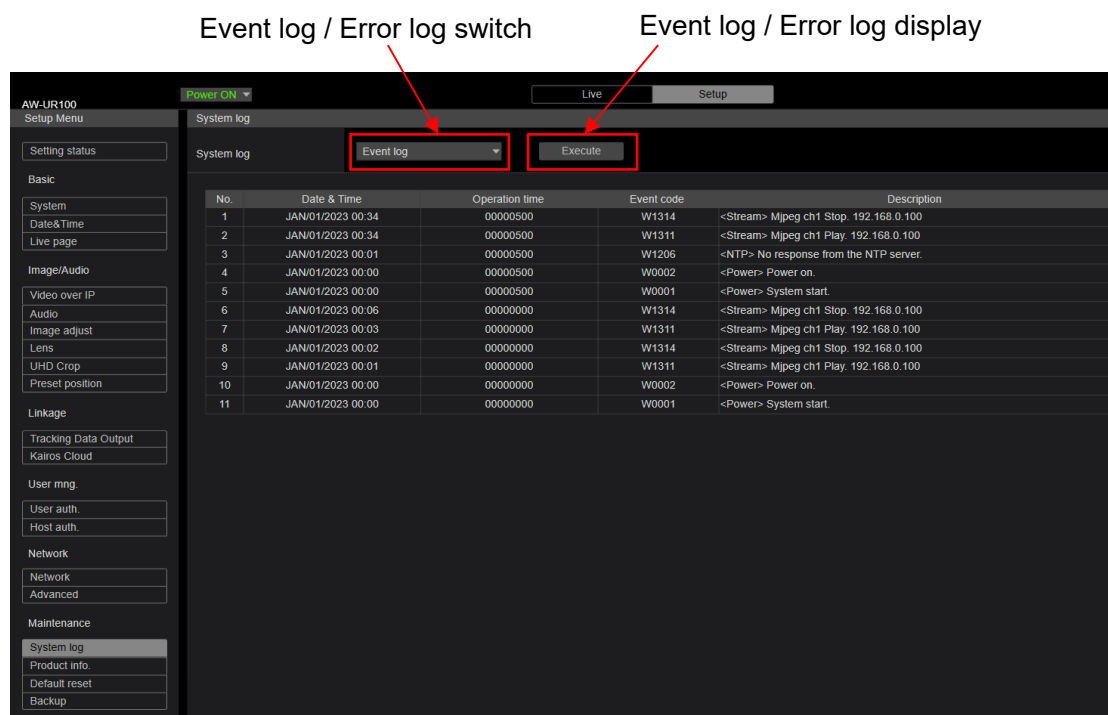


Event Log / Error Log for AW-UR100

Event Log and Error Log can be confirmed on WEB screen. (Setup Menu → Maintenance → System log)



< Event Log >

Event Log	Note
No.	Up to 100 events. The newest event log is No.1.
Date & Time	Date and Time that the event has occurred. Without time setting, bar is displayed.
Operation time	Hour meter that the event has occurred.
Event code	Refer to the following table.
Description	Refer to the following table.

< Error Log >

Error Log	Note
No.	Up to 32 errors. The newest event log is No.1.
Date & Time	Date and Time that the error has occurred.
Operation time	Hour meter that the error has occurred.
Error code	Refer to the following table.
Error description	Refer to the following table.

< Event Log table >

Event Code	Event Description	Note
W0001	<Power> System start.	Power was supplied and system started.
W0002	<Power> Power on.	Power ON
W0003	<Power> Standby.	Standby
W0005	<Power> PoE++ (Hardware) is working.	PoE++ power supply was OK. (Hardware detection)
W0006	<Power> PoE++ (Software) is working.	PoE++ power supply was OK. (Software detection)
W1003	<Maintenance> Succeeded OSD Menu initialization.	Initialization of OSD menu was successful.
W1005	<Maintenance> Succeeded firmware update.	Firmware update was successful.
W1006	<Maintenance> Failed firmware update.	Firmware update failed.
W1007	<Maintenance> Succeeded OSD menu and WEB menu initialization.	Initialization of WEB menu was successful.
W1008	<Maintenance> Reboot.	Reboot
W1009	<Maintenance> Succeeded configuration data upload. [User name] [IP address]	Setting data upload was successful.
W1013	<Maintenance> Succeeded Scene All initialization.	Initialization of all Scenes succeeded.
W1014	<Maintenance> Succeeded Scene 1 initialization.	Initialization of Scene 1 succeeded.
W1015	<Maintenance> Succeeded Scene 2 initialization.	Initialization of Scene 2 succeeded.
W1016	<Maintenance> Succeeded Scene 3 initialization.	Initialization of Scene 3 succeeded.
W1017	<Maintenance> Succeeded Scene 4 initialization.	Initialization of Scene 4 succeeded.
W1203	<Date&Time> Date&Time exchanged. [User name] [IP address]	Date and time has been set.
W1205	<NTP> NTP update succeeded.	Time synchronization succeeded
W1206	<NTP> No response from the NTP server.	The connection error with the NTP server.
W1210	<HTTPS> Self-signed Certificate – Generated.	Generating the Self-signed Certificate has been completed.
W1211	<HTTPS> Self-signed Certificate – Deleted.	Deleting the Self-signed Certificate has been completed.
W1212	<HTTPS> Certificate Signing Request-Generated.	Generating the Certificate Signing Request has been completed.
W1213	<HTTPS> CA Certificate – Installed.	Installation of the CA Certificate has been completed.
W1214	<HTTPS> CA Certificate – Deleted.	Deleting the CA Certificate has been completed.
W1215	<HTTPS> Previous CRT key – Applied.	The previous CRT key has been applied.
W1216	<HTTPS> CRT key – Generated.	Generating the CRT key has been completed.
W1217	<Genlock> Genlock succeeded	Genlock succeeded
W1218	<Genlock> Genlock failed	Genlock failed
W1220	<Codec> General error occurred	Codec error occurred.
W1303	<Login> Remote camera controller connected. [User name] [IP address]	ROP connection and IP / account information.
W1311	<Stream> Mjpeg ch1 Play. [User name] [IP address]	User information display who started mjpeg delivery.
W1312	<Stream> Mjpeg ch2 Play. [User name] [IP address]	User information display who started mjpeg delivery.

W1313	<Stream> Mjpeg ch3 Play. [User name] [IP address]	User information display who started mjpeg delivery.
W1314	<Stream> Mjpeg ch1 Stop. [User name] [IP address]	User information display who stopped mjpeg delivery.
W1315	<Stream> Mjpeg ch2 Stop. [User name] [IP address]	User information display who stopped mjpeg delivery.
W1316	<Stream> Mjpeg ch3 Stop. [User name] [IP address]	User information display who stopped mjpeg delivery.
W1317	<Stream> H.264 ch1 Play. [User name] [IP address]	User information display who started H.264 delivery.
W1318	<Stream> H.264 ch2 Play. [User name] [IP address]	User information display who started H.264 delivery.
W1319	<Stream> H.264 ch3 Play. [User name] [IP address]	User information display who started H.264 delivery.
W1320	<Stream> H.264 ch4 Play. [User name] [IP address]	User information display who started H.264 delivery.
W1321	<Stream> H.264 ch1 Stop. [User name] [IP address]	User information display who stopped H.264 delivery.
W1322	<Stream> H.264 ch2 Stop. [User name] [IP address]	User information display who stopped H.264 delivery.
W1323	<Stream> H.264 ch3 Stop. [User name] [IP address]	User information display who stopped H.264 delivery.
W1324	<Stream> H.264 ch4 Stop. [User name] [IP address]	User information display who stopped H.264 delivery.
W1325	<Stream> H.265 ch1 Play. [User name] [IP address]	User information display who started H.265 delivery.
W1326	<Stream> H.265 ch1 Stop. [User name] [IP address]	User information display who stopped H.265 delivery.
W1327	<Stream> Reached the number of connections limit. [User name] [IP address]	Maximum number of connections.
W1328	<Stream> Reached the processing limit.	CPU load upper limit.
W1329	<Stream> Reached the bandwidth limit.	Bandwidth upper limit.
W1331	<Control> Lock remote control. [User name] [IP address]	Lockout start and IP/account information.
W1332	<Control> Unlock remote control. [User name] [IP address]	Lockout release and IP/account information.
W1341	<Stream> H.265 ch2 Play. [User name] [IP address]	H265 distribution start and IP/account information.
W1342	<Stream> H.265 ch2 Stop. [User name] [IP address]	H265 distribution stop and IP/account information.
W1345	<Stream> NDI Add Client. [Number of Client]	NDI Client Additional information display.
W1346	<Stream> NDI Decrease. [Number of Client]	NDI Client Delete information display.

< Error Log table >

Error Code	Error Description	Note
0x00	Normal	No Error
0x03	Motor Driver Error (PAN)	PAN motor drive error
0x03	Motor Driver Error (TILT)	TILT motor drive error
0x21	System Error	System error
0x22	Spec Limit Over (Pan)	Limit error (PAN)
0x22	Spec Limit Over (Tilt)	Limit error (TILT)
0x24	NET life-monitoring Error	NET CPU life / death monitoring timeout
0x25	Main Life-monitoring Error	BE CPU life / death monitoring timeout
0x29	CAM Life-monitoring Error	CAM CPU life / death monitoring timeout
0x31	Fan1 error	Fan Error (Camera side)
0x32	Fan2 error	Fan Error (Bottom side)
0x33	High Temp	High temperature condition
0x36	Low Temp	Low temperature condition
0x39	Wiper Error	Wiper Error
0x40	Temp Sensor Error	Temperature sensor Error
0x41	Lens Initialize Error	Lens origin search failed (Lens)
0x42	PT. Initialize Error	PAN/TILT origin search failed
0x43	PoE++ Software auth. Timeout	PoE++ timeout error
0x50	MR Level Error (PAN)	MR Level Error (PAN)
0x50	MR Level Error (TILT)	MR Level Error (TILT)
0x52	MR Offset Error (PAN)	MR Offset Error (PAN)
0x52	MR Offset Error (TILT)	MR Offset Error (TILT)
0x57	Gyro Error	Gyro Error
0x58	PT. Initialize Error (PAN)	Origin position search failed (PAN)
0x58	PT. Initialize Error (TILT)	Origin position search failed (TILT)