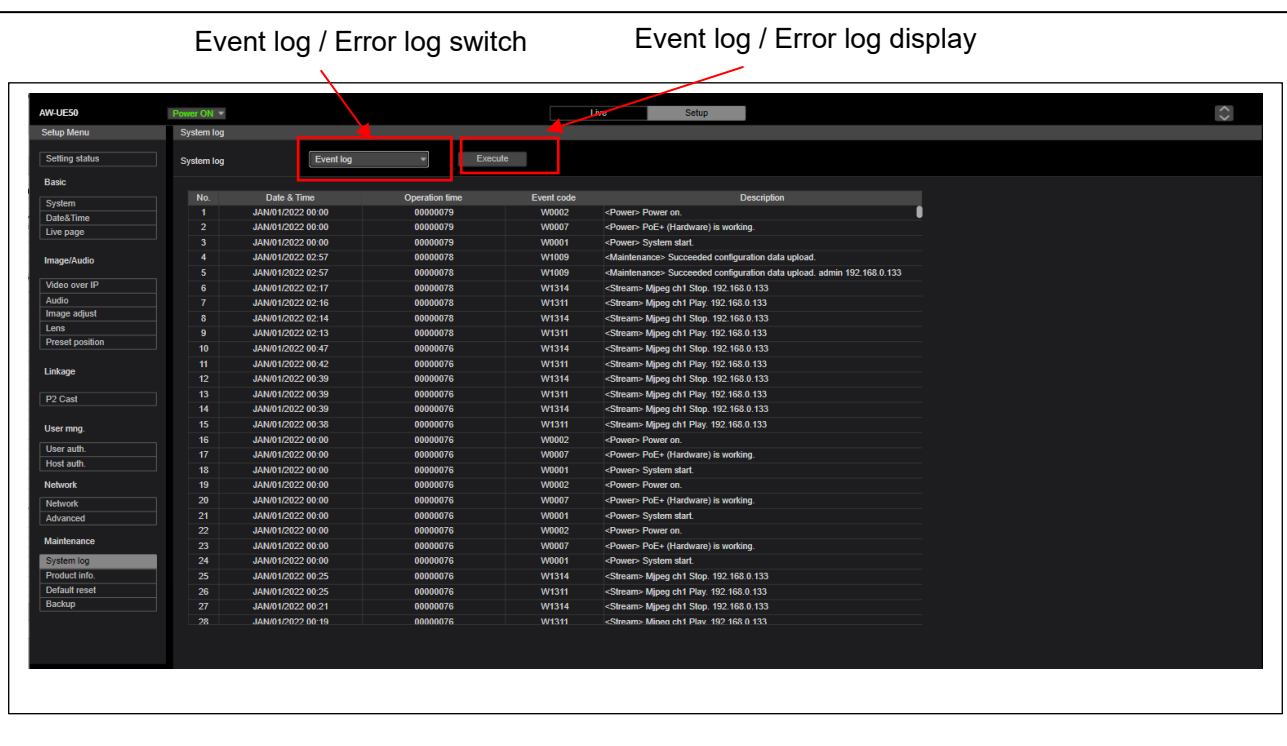


Event Log / Error Log for AW-UE50/40

Event Log and Error Log can be confirmed on WEB screen. (Setup → Maintenance → System log)



< Event Log >

Event Log	Note
No.	Up to 1000 events. The newest event log is No.1.
Date & Time	Date and Time that the event has occurred. Without time setting, bar is displayed.
Operation time	Hour Meter that the error has occurred. (0h – 9999h)
Event code	Refer to the following table.
Description	Refer to the following table.

< Error Log >

Error Log	Note
No.	Up to 32 errors. The newest event log is No.1.
Date & Time	Date and Time that the event has occurred. Without time setting, bar is displayed.
Operation time	Hour Meter that the error has occurred. (0h – 9999h)
Error code	Refer to the following table.
Error description	Refer to the following table.

< Event Log table >

Event Code	Event Description	Note
W0001	<Power> System start.	Power was supplied and system started.
W0002	<Power> Power on.	“Power ON” button is pressed on WEB screen.

W0003	<Power> Standby.	"Standby" button is pressed on WEB screen.
W0007	<Power> PoE+ (Hardware) is working.	POE+ power supply was OK. (Hardware detection)
W0008	<Power> PoE+ (Software) is working.	POE+ power supply was OK. (Software detection)
W0009	<Power> Change PoE+ (Hardware) is working.	DC -> PoE+ (Hardware Autentication)
W0010	<Power> Change PoE+ (Software) is working.	DC -> PoE+ (Software Autentication)
W0011	<Power> Change DC is working.	PoE+ (Hardware Autentication) -> DC
W0012	<Power> Change DC is working.	PoE+ (Software Autentication) -> DC
W1003	<Maintenance> Succeeded OSD Menu initialization	Initialization of OSD menu (Maintenance -> Initialize) was successful.
W1005	<Maintenance> Succeeded firmware update	Firmware update (Maintenance -> Product info) was successful.
W1006	<Maintenance> Failed firmware update	Firmware update (Maintenance -> Product info) failed.
W1007	<Maintenance> Succeeded OSD menu and WEB menu initialization	"Reset to the default (Except the network settings)" of WEB menu (Maintenance -> Default reset) was successful.
W1008	<Maintenance> Reboot	"Reboot" of WEB menu (Maintenance -> Default reset) was executed.
W1009	<Maintenance> Succeeded configuration data upload	Setting data upload (Maintenance -> Backup) was successful.
W1013	<Maintenance> Succeeded Scene All initialization.	Initialization of all Scenes succeeded.
W1014	<Maintenance> Succeeded Scene 1 initialization.	Initialization of Scene 1 succeeded.
W1015	<Maintenance> Succeeded Scene 2 initialization.	Initialization of Scene 2 succeeded.
W1016	<Maintenance> Succeeded Scene 3 initialization.	Initialization of Scene 3 succeeded.
W1017	<Maintenance> Succeeded Scene Full Auto initialization.	Initialization of Scene 4 succeeded.
W1203	<Date&Time> Date&Time exchanged	Date and time has been set. PC synchronization / NTP sever connection / Manual setting
W1205	<NTP> NTP update succeeded	Time synchronization succeeded
W1206	<NTP> No response from the NTP server	The connection error with the NTP server.
W1210	<HTTPS> Self-signed Certificate Generated	Generating the Self-signed Certificate has been completed.
W1211	<HTTPS> Self-signed Certificate Deleted	Deleting the Self-signed Certificate has been completed.
W1212	<HTTPS> Certificate Signing Request Generated	Generating the Certificate Signing Request has been completed.
W1213	<HTTPS> CA Certificate Installed	Installation of the CA Certificate has been completed.
W1214	<HTTPS> CA Certificate Deleted	Deleting the CA Certificate has been completed.
W1215	<HTTPS> Previous CRT key Applied	The previous CRT key has been applied.
W1216	<HTTPS> CRT key Generated	Generating the CRT key has been completed.
W1217	<Genlock> Genlock succeeded	After detecting the genlock signal, the external lock succeeded.
W1218	<Genlock> Genlock failed	After detecting the genlock signal, the external lock failed.
W1220	<Codec> General error occurred	Codec error occurred. (ex. JPEG freeze)
W1303	<Login> Remote camera controller connected [username] [IP address]	ROP connection and IP / account information
W1311	<Stream> Mjpeg ch1 Play [username] [IP address]	User information display who started mjpeg delivery
W1312	<Stream> Mjpeg ch2 Play [username] [IP address]	User information display who started mjpeg delivery
W1313	<Stream> Mjpeg ch3 Play [username] [IP address]	User information display who started mjpeg delivery

	address]	
W1314	<Stream> Mjpeg ch1 Stop [username] [IP address]	User information display who stopped mjpeg delivery
W1315	<Stream> Mjpeg ch2 Stop [username] [IP address]	User information display who stopped mjpeg delivery
W1316	<Stream> Mjpeg ch3 Stop [username] [IP address]	User information display who stopped mjpeg delivery
W1317	<Stream> H.264 ch1 Play [username] [IP address]	User information display who started H.264 delivery
W1318	<Stream> H.264 ch2 Play [username] [IP address]	User information display who started H.264 delivery
W1319	<Stream> H.264 ch3 Play [username] [IP address]	User information display who started H.264 delivery
W1320	<Stream> H.264 ch4 Play [username] [IP address]	User information display who started H.264 delivery
W1321	<Stream> H.264 ch1 Stop [username] [IP address]	User information display who stopped H.264 delivery
W1322	<Stream> H.264 ch2 Stop [username] [IP address]	User information display who stopped H.264 delivery
W1323	<Stream> H.264 ch3 Stop [username] [IP address]	User information display who stopped H.264 delivery
W1324	<Stream> H.264 ch4 Stop [username] [IP address]	User information display who stopped H.264 delivery
W1325	<Stream> H.265 ch1 Play [username] [IP address]	User information display who started H.265 delivery
W1326	<Stream> H.265 ch1 Stop [username] [IP address]	User information display who stopped H.265 delivery
W1327	<Stream> Reached the number of connections limit [username] [IP address]	Maximum number of connections
W1328	<Stream> Reached the processing limit	CPU load upper limit
W1329	<Stream> reached the bandwidth limit	Bandwidth upper limit
W1331	<Contorol> lock remote control [username] [IP address]	Lockout start and IP/account information
W1332	<Control> Unlock remote control [username] [IP address]	Lockout release and IP/account information
W1341	<Stream> H.265 ch2 Play. [User's name] [IPaddress]	H265 distribution start and IP/account information.
W1342	<Stream> H.265 ch2 Stop. [User's name] [IPaddress]	H265 distribution stop and IP/account information.
W1345	<Stream> High bandwidth NDI Add Client. [Number of Client]	High bandwidth NDI Client Additional information display.
W1346	<Stream> High bandwidth NDI Decrease. [Number of Client]	High bandwidth NDI Client Delete information display.
W1347	<Stream> USB Mjpeg Play.	UVC(MJPG) distribution start
W1348	<Stream> USB Mjpeg Stop.	UVC(MJPG) distribution stop
W1349	<Stream> USB YUV Play.	UVC(YUV) distribution start
W1350	<Stream> USB YUV Stop.	UVC(YUV) distribution stop
W1351	<Stream> USB LPCM Play.	UVC(LPCM) distribution start
W1352	<Stream> USB LPCM Stop.	UVC(LPCM) distribution stop

< Error Log table >

Event Code	Event Description	Note (Factor)
0x00	Normal	No Error
0x03	<ul style="list-style-type: none"> • Motor Driver Error(PAN) • Motor Driver Error(TILT) 	Motor related Error(Servo) →The PT is not running for some reason.
0x04	Pan Sensor Error	Pan Sensor is abnormal
0x05	Tilt Sensor Error	Tilt Sensor is abnormal
0x06	Controller RX Over run Error	RP(Remote Controller) side
0x07	Controller RX Framing Error	RP(Remote Controller) side
0x17	Controller RX Command Buffer Overflow	RP(Remote Controller) side
0x24	NET life-monitoring Error	NET CPU life / death monitoring timeout(V10)
0x25	Main Life-monitoring Error	BE CPU life / death monitoring timeout(V10)
0x29	CAM Life-monitoring Error	CAM CPU life / death monitoring timeout(V10)
0x30	FPGA Life-monitoring Error	Zynq Life and Life Monitoring Timeout
0x31	Fan1 error	Fan Error(Lens side)
0x33	High Temp	Ultra high temperature condition(Lens or Main)
0x36	Low Temp	Low temperature condition(Lens or Main)
0x40	Temp Sensor Error	Temperature sensor Error(Lens or Main)
0x41	Lens Initialize Error	Lens origin search failed(Lens)
0x42	PT. Initialize Error	Pan/Tilt origin search failed(Servo) →Timeout Error. It is necessary to check what the previous error occurred
0x45	PoE+ Software auth. Timeout	PoE+ TimeOut Error
0x47	USB Streaming Error	UVC/UAC distribution Error
0x50	<ul style="list-style-type: none"> • MR Level Error (PAN) • MR Level Error (TILT) 	MR Level Error(Motor)
0x52	<ul style="list-style-type: none"> • MR Offset Error (PAN) • MR Offset Error (TILT) 	MR Offset Error(Motor) It appears when the offset adjustment value of motor FGMR at startup is abnormal
0x53	Origin Offset Error	PT Error (Servo)
0x54	Angle MR Sensor Error	MR (Servo)
0x55	PT. Gear Error	PT Error (Servo)
0x56	Motor Disconnect Error	Motor Error(Servo)
0x57	Gyro Error	Gyro Error(Servo)
0x58	<ul style="list-style-type: none"> • PT. Initialize Error (PAN) • PT. Initialize Error (TILT) 	Pan / Tilt origin search failed