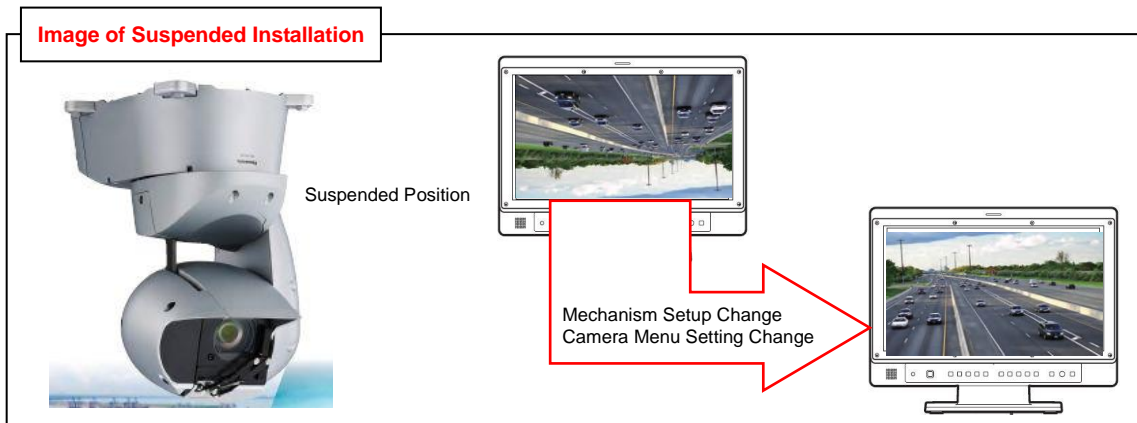


## AW-HR140 – Turning Output Image Upside Down

- If AW-HR140 camera is installed in a suspended position, the settings for mechanism and output image (menu) need to be changed in advance in order to ensure its rotation range of 175 degrees left and right. (Default: Stand-alone installation)

### <NOTE>

- Selecting wrong settings for these may cause contact with the movement range part and result in malfunction.
- After changing the output image setting, you need to turn OFF the power supply to the camera and then turn it ON.

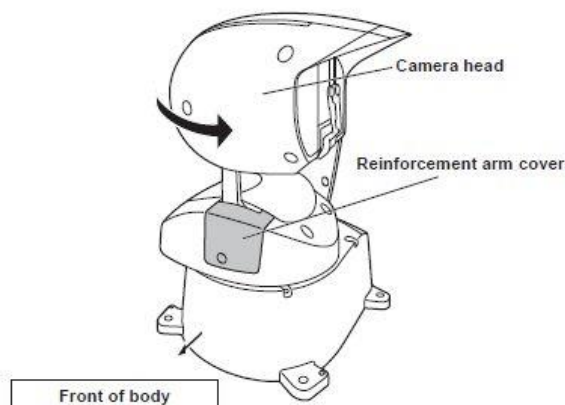


### 【Changing the mechanism setup】

- ① Rotate the camera head to a front position – (figure below).

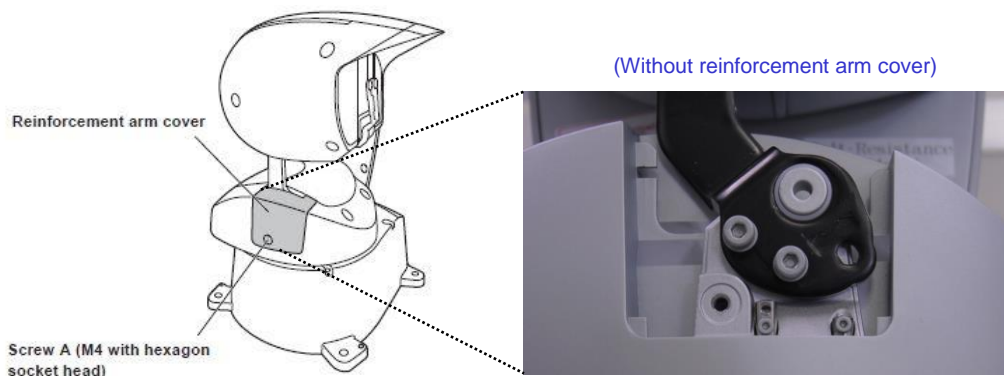
※Make sure the reinforcement arm cover is oriented toward the front of the body.

If the work is performed when it is in another position, a load will be applied to the cables inside the unit, leading to a failure.



② Loosen the screw A and remove the reinforcement arm cover from the body.

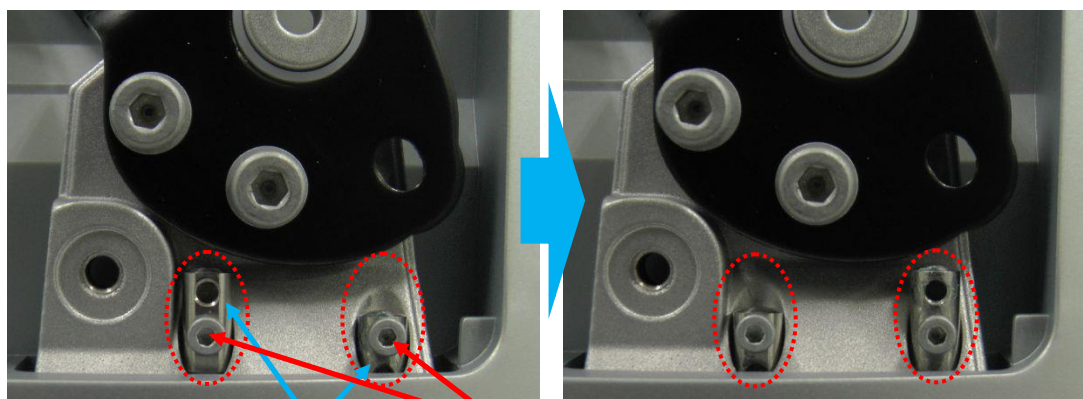
(Necessary tool: 3 mm hexagon wrench)



③ Remove the two pin fixing screws – (Fig.1), and fix the pins at the mechanism endpoint in their suspended installation positions – (Fig.2) with those pin fixing screws. (Necessary tool: 1.5 mm hexagon wrench)

(Fig.1: Positions of pins for stand-alone installation)

(Fig.2: Positions of pins for suspended installation)

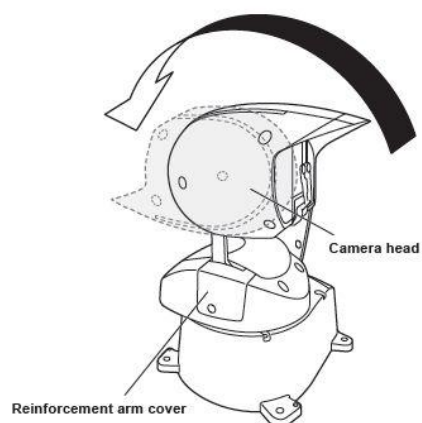


(Pins at mechanism endpoint)

(Pin fixing screws)

(NOTE) Tighten the fixing screws securely into the inner side holes.

④ Rotate the camera head 180 degrees in the direction of the arrow so that the top and bottom of the camera head are reversed, and then attach the reinforcement arm cover to the body.



**⑤ Install the camera in a suspended position.**

※For installation procedure, please refer to page 8 and following pages of Operating Instructions [Installation Instructions provided].

**【Changing the output image setting】**

**⑥ Set [Install Position] to [Hanging] in the camera menu.**

Location: System > Others > Others 1/5 > Install Position ⇒ Select [Hanging].

※Just a change of [Install Position] setting in the camera menu is not enough to invert the image.

It becomes effective when you turn OFF the power supply to the camera and then turn it ON after changing the setting.

**<Note>**

·When you put the camera back into a stand-alone installation from a suspended installation, take steps similar to the above to change the settings back to the ones for stand-alone installation.