

# Panasonic

## Installation Manual

---

Application

**P2 Cast Bridge**

For Avid Interplay (Media Central)



## Contents

---

<b>Introduction</b> .....	<b>3</b>	<b>Installing P2 Cast Bridge</b> .....	<b>5</b>
About this guide .....	3	<b>How to Set up</b> .....	<b>6</b>
Precautions.....	3	Appendix 1: Transcoding Setting when checking-in .....	13
Notice regarding security .....	3		
System requirements.....	4		
Compatible operating environments .....	4		

## Introduction

- Microsoft and Windows are trademarks or registered trademarks of Microsoft Corporation in the United States and other countries.
- Various names, company names, product names, and other items listed in this guide are trademarks or registered trademarks of their respective companies.
- Intel® and Core™ are registered trademarks or trademarks of Intel Corporation in the United States and other countries.

### About this guide

- Descriptions in this guide are based on the assumption that wired and wireless LAN settings on relevant computers are already configured. For instructions on these settings, refer to information from the device manufacturers.
- Thank you for understanding that Panasonic is not liable for any loss from incorrectly configuring network settings in order to use this software. Neither is Panasonic liable for any loss from using this software.
- Descriptions of operations on a Memory Card Camera-Recorder ("P2 Camera Recorder") and in the P2 Cast cloud application and Interplay application ("Interplay") are based on the assumption that you have read the P2 Camera Recorder, P2 Cast, and Interplay user guides and understand camera and software operations.
- User interface elements in P2 Cast or Interplay are enclosed in brackets.
- Figures and screenshots may differ from actual products or screens.
- Cross-references are noted as in (→ 00).
- This information is subject to change without notice.

### Precautions

- Avoid doing the following while an operation in the application is in progress. This may cause data corruption or other problems.
  - Turn off or restart the computer
  - Switch users or sign out
  - Disconnect from the network
  - Use other software, especially software that often writes to disk, or video recording/encoding software that is processing- or memory-intensive
- If limited system resources prevent the application from running, close other software and try logging in again.

### Notice regarding security

Using this application may expose you to the following security risks.

- Leaks of personal information from this application
- Unauthorized use of the application by malicious third parties
- Interfering with or stopping use of the application by malicious third parties

Take ample security measures on the computer or mobile device used.

- Restrict use of the application to users who have passwords.
- Use passwords that are hard to guess.
- Change passwords regularly.
- Panasonic Corporation and its affiliates will not directly ask you for your password. If someone contacts you directly about your password, do not disclose it.
- To avoid information leaks, clear your browsing history and saved passwords before having your computer serviced, or before disposal or transfer of ownership.

#### Wireless LAN security precautions

Wireless networks offer the convenience of sharing information between computers and mobile devices via an access point wirelessly instead of requiring a wired connection, which enables you to join the network anywhere within wireless range. However, because radio waves reach everywhere within range and can pass through walls, wireless networks pose the following risks unless you complete relevant security settings.

- Spying on information sent or received  
Malicious third parties may intercept and spy on wireless communication, which may include user IDs, passwords, credit card numbers, or other personal information besides the information sent and received, such as email messages.
- Intrusion  
Malicious third parties intruding in home or business networks may steal personal or confidential information (which constitutes information leaks), impersonate specific people (spoofing) and release fraudulent information, tamper with and distribute intercepted information (falsification), or destroy data or systems by spreading computer viruses (destruction), among other acts.

Wireless LAN adapters and access points incorporate security mechanisms to help prevent these issues. Completing relevant security settings before using the application reduces the risk of these problems.

However, these security settings on wireless LAN equipment may not be set up by default. To reduce your security risks, before using wireless LAN equipment, always complete relevant settings as described in equipment user manuals. Also note that even when configured correctly, these security mechanisms can be compromised by special methods, due to inherent vulnerabilities in wireless LAN specifications.

If you will use the application without completing security settings, make sure you understand the risks well. User discretion is advised in completing security settings before use.

**System requirements**

- First, confirm that your computer supports wired or wireless LAN connections.
- Operation is not necessarily ensured with all wireless or wired LAN adapters and computers.
- Check the following settings.
  - Confirm that the network is not set up as a bridged network.
  - Confirm that the application is not blocked by a firewall.

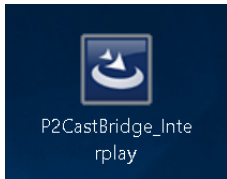
**Compatible operating environments**

The PC environment required for using this application is described below.

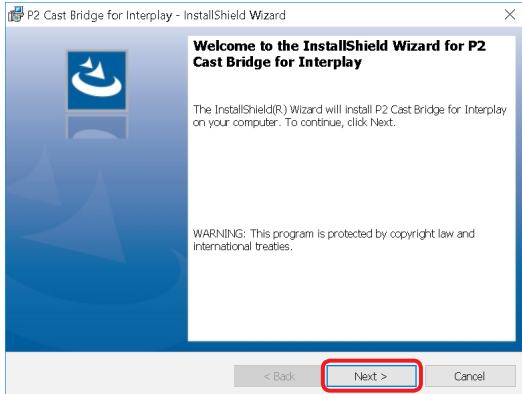
<b>OS</b>	Microsoft® Windows® 10 (32 bit/64 bit) Home Microsoft® Windows® 10 (32 bit/64 bit) Pro Microsoft® Windows® 10 (32 bit/64 bit) Enterprise Microsoft® Windows® 8.1 (32 bit/64 bit) Microsoft® Windows® 8.1 (32 bit/64 bit) Pro Microsoft® Windows® 8.1 (32 bit/64 bit) Enterprise Microsoft® Windows® 7 (32 bit/64 bit) Home Premium Service Pack 1 Microsoft® Windows® 7 (32 bit/64 bit) Professional Service Pack 1 Microsoft® Windows® 7 (32 bit/64 bit) Ultimate Service Pack 1 Microsoft® Windows® Server 2012 R2 Microsoft® Windows® Server 2008 R2
<b>Necessary software</b>	.NET Framework 4.5
<b>CPU</b>	Intel® Core™ 2 or higher
<b>RAM</b>	2 GB or more (32 bit), 4 GB or more (64 bit)
<b>Hard disk</b>	250 MB or more for installing application

# Installing P2 Cast Bridge

## 1 Download the file and start the Installer.

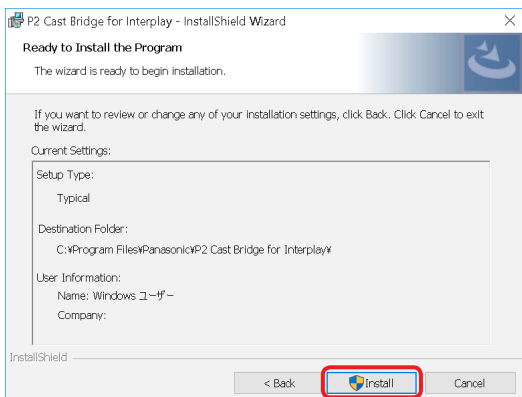


## 2 Click [Next].



## 3 Click [Install].

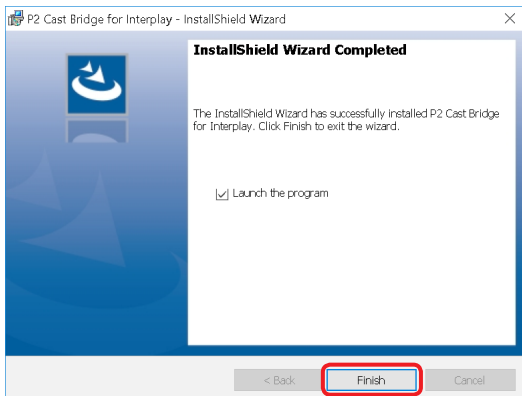
The progress screen is displayed.



## 4 Click [Finish].

Once installation is finished, the main screen is displayed.

A P2 Cast Bridge shortcut icon is created on the computer desktop.



# How to Set up

## 1 Open P2 Cast Bridge for Interplay.

After installation, launch P2 Cast Bridge for Interplay.  
For the first time, this setting needs to be completed.



The screenshot shows the configuration window for P2 Cast Bridge [MAM]. It is divided into four main sections, each with a 'Setting' button highlighted in red:

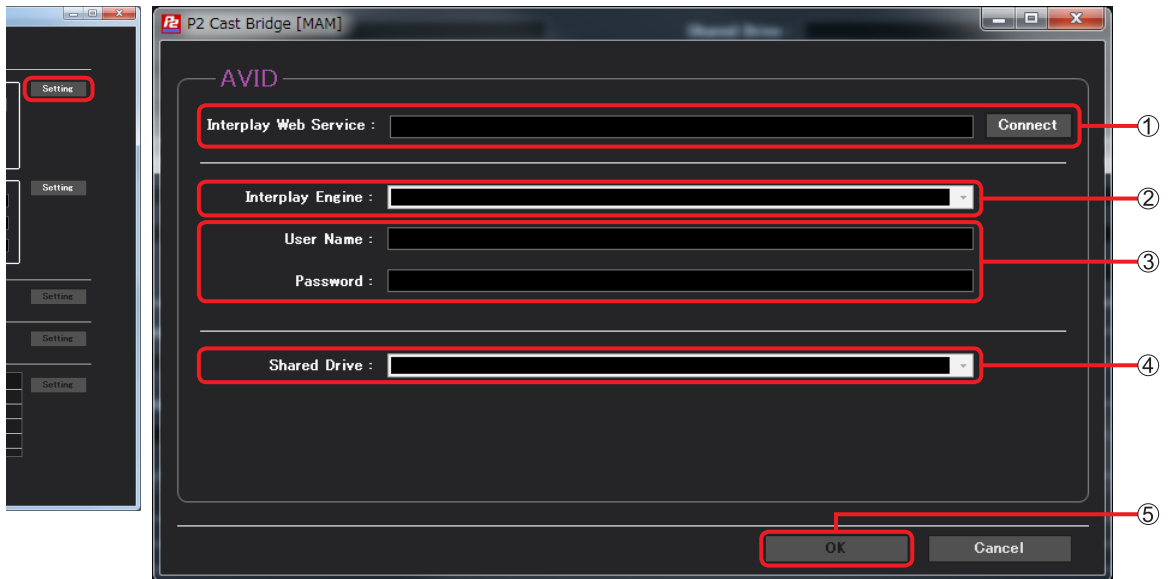
- STEP 1-1:** Located in the 'AVID' section under 'Configurations', it includes fields for Interplay Web Service, Interplay Engine, User Name, and Shared Drive.
- STEP 1-2:** Located in the 'P2 Cast' section, it includes fields for P2 Cast URL, UserID, and a 'Temporary folders for MAM' section with Proxy Download, EDL Output, and Hi-Res Download options.
- STEP 2:** Located in the 'Interplay Proxy Checkin' section, it includes an Interplay field and radio button options for 'Create shooting date folder' and 'Do not create folders'.
- STEP 3:** Located in the 'Interplay HiRes Checkin' section, it includes an Interplay field and radio button options for 'Create shooting date folder' and 'Do not create folders'.
- STEP 4:** Located in the 'Interplay Sequence Watch Folders' section, it includes a 'Path' table with multiple empty rows.

A 'Start Auto MAM' button is visible at the bottom of the window.

This is the configuration of 5 steps. Set up step by step.

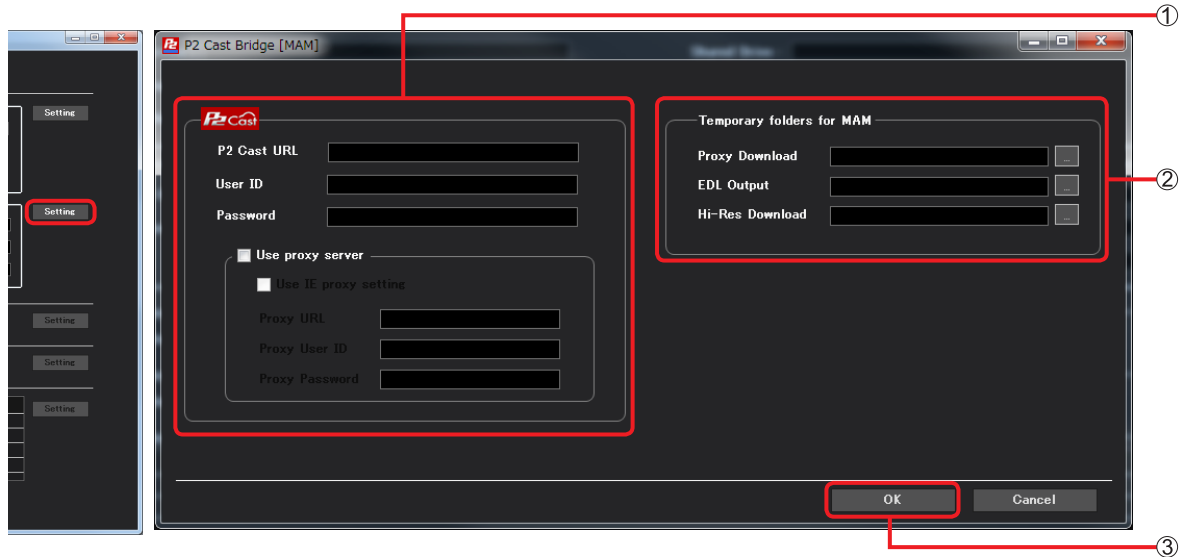
- STEP1-1** Set up Interplay Web Service connection
- STEP1-2** Set up P2 Cast connection and Decide Temporary folder
- STEP2** Set up Proxy Check-In setting in Interplay
- STEP3** Set up Hi-Res Check-In setting in Interplay
- STEP4** Set up EDL(Proxy Sequence) Check-In setting in Interplay

**STEP1-1 Set up Interplay Web Service connection.**



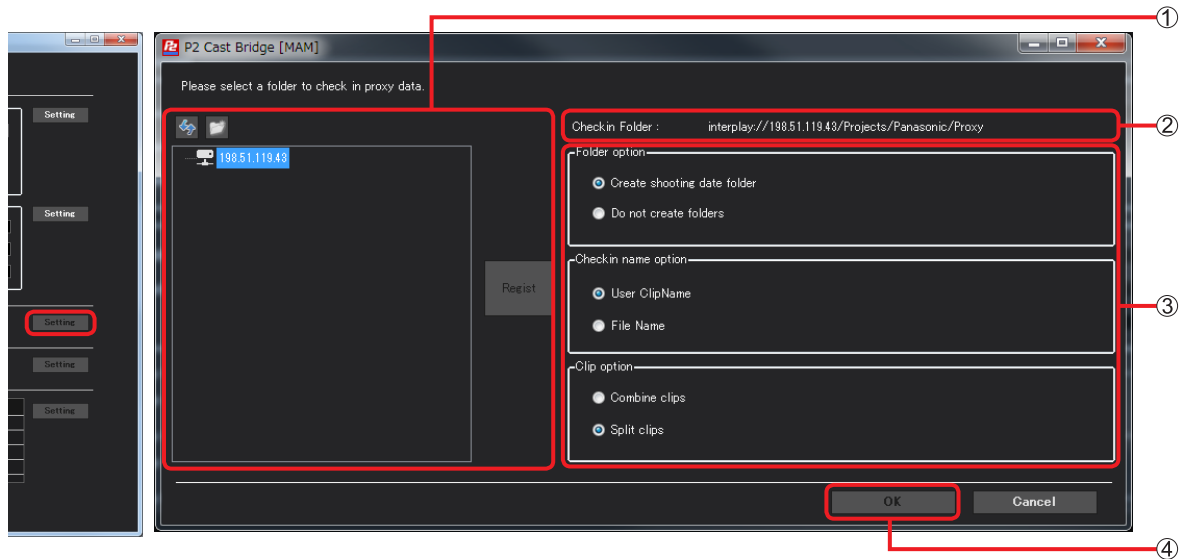
- ① Type in IP address of the Interplay Web Service, then click “Connect”.  
(Ex.) 192.48.72.88
- ② If the connection to Interplay Web Service is successful, it will be filled automatically. If Interplay has several engines, those are added to comb-box. Select.  
(Ex.) WGC(192.48.119.43)
- ③ Type in the access user ID and Password for the selected Interplay Engine  
(Ex.) User Name: Pana12  
Pass word: \*\*\*\*\*
- ④ Select the ISIS/NEXIS share storage (Ex.) ¥¥isis5k\_sd3¥¥5k\_Avid
- ⑤ Click “OK”. The system will start checking your information.  
If nothing is wrong, data will be saved and return to main screen.

**STEP1-2 Set up Interplay Web Service connection.**



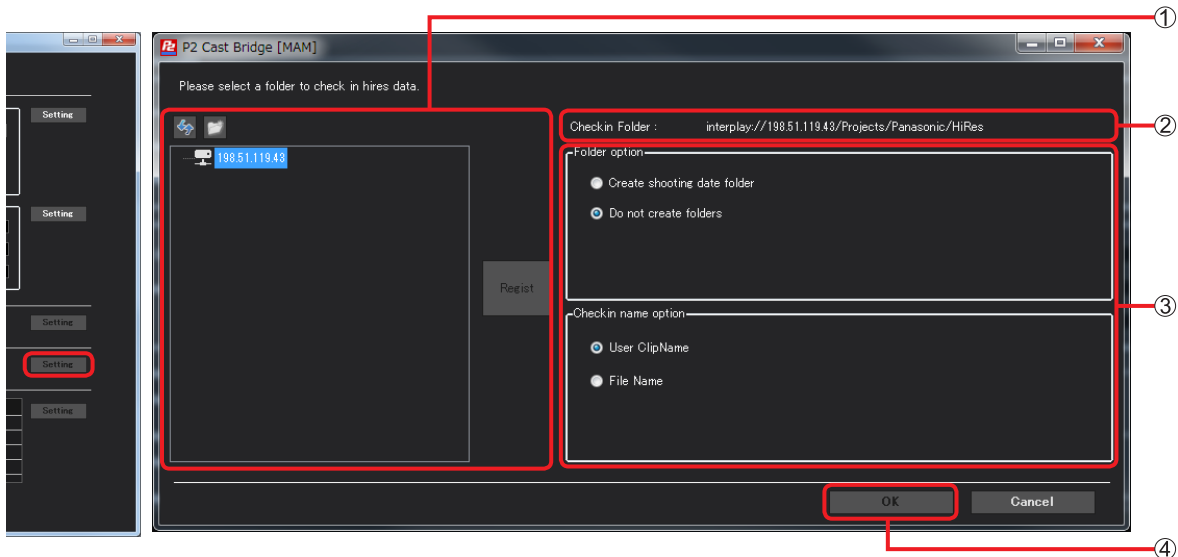
- ① Type in P2 Cast URL, User ID, and Password.  
 (Ex.) <http://cytsvptvshow-xxxxxxx.p2cast.net/>  
 ID: panasonicUser1  
 Password: \*\*\*\*\*
- ② Setting for the temporary folders.  
 (Ex.) C:\¥Panasonic¥Proxy  
 (Ex.) C:\¥Panasonic¥EDL  
 (Ex.) C:\¥Panasonic¥HiRes
- ③ Click "OK". The system will start checking your information.  
 If nothing is wrong, data will be saved and return to main screen.



**STEP2 Set up Proxy Check-In setting in Interplay.**

- ① Interplay folder structure will be automatically loaded. Select the proxy check-in folder.  
It is recommended you name something that is easy to identify with other clips for example Panasonic/Proxy.
- ② Once you click "Regist", the check-in folder will be changed to folder you have selected in ①.
- ③ ■ **Folder Option**  
Create shooting date folder: Automatically creates a folder with the name of created date and time.  
If you are checking in a large number of clips. It is recommended you choose this option.
- **Check in name option.**  
User ClipName: Use the Clip name  
Choose Type 2 for the P2 Device setting when choosing User Clip Name.  
It will be difficult to identify if you use the Global Clip ID.  
File Name: Use the file name.
- **Clip Option**  
Combine clips: When checking-in proxy, combine separate clips if they are split up.  
Split clips: To leave them split as they are.  
\*If you are doing Near Live, choose Split clips.
- ④ Click "OK". The system will start checking your information.  
If nothing is wrong, data will be saved and return to main screen.

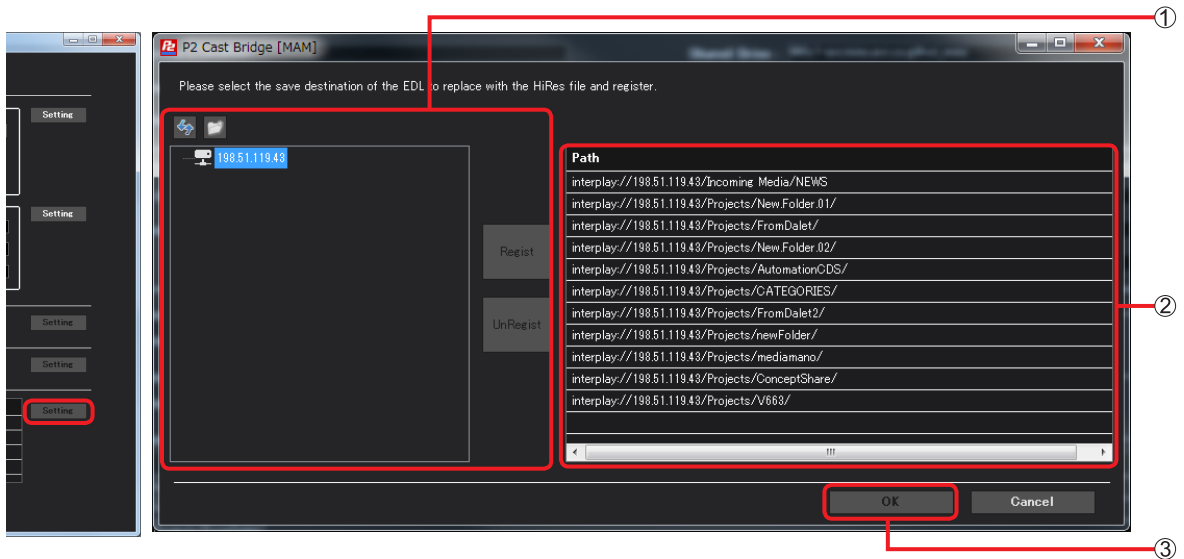
**STEP3 Set up Hi-Res Check-In setting in Interplay.**



- ① Interplay folder structure will be automatically loaded. Select the Hi-Res check-in folder.  
It is recommended you name something that is easy to identify with other clips for example Panasonic/Hi-Res.  
*\* Choose a different folder from Proxy.*
- ② Once you click “Register”, the check-in folder will be changed to the folder you have selected in ①.
- ③ **Folder Option**  
Create shooting date folder: Automatically creates a folder with the name of created date and time.  
If you are checking in a large number of clips, we recommend you to choose this.  
*\*Select same setting as proxy check-in if no reason.*
- Check in name option.**  
User ClipName: Use Clip name  
    Choose Type 2 for the P2 Device setting when choosing User Clip Name.  
    It will be difficult to identify if you use the Global Clip ID.  
File Name: Use file name.  
*\*Select same setting as proxy check-in if no reason.*
- ④ Click “OK”. The system will start checking your information.  
If nothing is wrong, data will be saved and return to main screen.

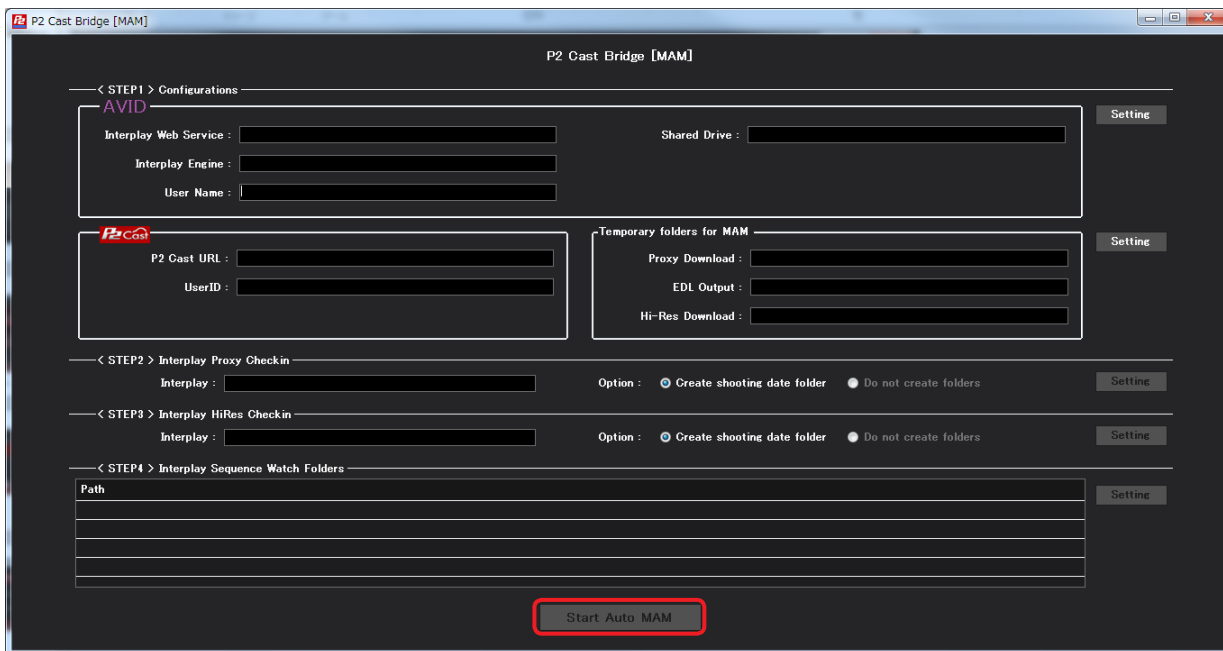
**STEP4 Set up EDL(Proxy Sequence) Check-In setting in Interplay.**

Select the destination for saving Proxy Sequence. If the Proxy Sequence is found (Update/Create) in the watching folder, it will automatically pick-up Hi-Res clips from P2 Device based on proxy which is using on proxy sequence and create Hi-Res Sequence which is same structure of proxy sequence.



- ① Interplay folder structure will be automatically loaded. Select the EDL(Proxy sequence) watching folder.
- ② Once you click “Regist”, the folder you have selected will be registered to list as watching folder. If you wish to remove from watching folder, select one from the list and choose “UnRegist”.
- ③ Click “OK”. The system will start checking your information. If nothing is wrong, data will be saved and return to main screen.

## 2 Start / Stop.



If you click “Start Auto MAM” bottom, it will start running the software.

- It will automatically start to download proxy clip from P2 Cast and check-in to Interplay.
- If you create Proxy Sequence in Media Composer and check in to watching folder on Interplay, it will automatically pick up Hi-Res clip from P2 Devices and create Hi-Res Sequences.

If you click “Stop Auto MAM” bottom, it will stop running the software

**Appendix 1: Transcoding Setting when checking-in**

When checking-in proxy/Hi-Res, you can transcode format to match with your system.

If you want to change, change following the file (user.config)'s parameter.

[C:\Users\<user name>\AppData\Local\Panasonic\P2 Cast Bridge\P2CastAutoDirector1.0\user.config](#)

\* this file will be created after installing P2 Cast Bridge.

**user.config**

```

<setting name="TranscodeMatrix" serializeAs="Xml">
  <value>
    <TranscodeMatrix xmlns:xsd="http://www.w3.org/2001/XMLSchema"
      xmlns:xsi="http://www.w3.org/2001/XMLSchema-instance">
      <Transcodes>
        <string>3,2</string> *
        <string>4,2</string>
        <string>5,2</string>
        <string>6,2</string>
        <string>7,2</string>
        <string>8,9</string>
      </Transcodes>
    </TranscodeMatrix>
  </value>
</setting>
    
```

Format: <string> original Format , transcode Format </string>

\* **Default parameter**

- 3 (LongG50) → 2 (AVCIntra50)
- 4 (LongG25) → 2 (AVCIntra50)
- 5 (LongG12) → 2 (AVCIntra50)
- 6 (G6) → 2 (AVCIntra50)
- 7 (SHQ) → 2 (AVCIntra50)

**Transcode chart**

<example>

AVCIntra100=1  
 AVCLongG25 =4  
 4,1 is ....  
 Transcode  
 AVCLongG25 to  
 AVCIntra100

Format		0	1	2	3	4	5	6	7	8	9
Hi-Res	AVCIntra100	1	----	----	----	----	----	----	----	----	----
	AVCIntra50	2	----	----	----	----	----	----	----	----	----
	AVCLongG50	3	OK	OK	----	----	----	----	----	----	----
	AVCLongG25	4	OK	OK	----	----	----	----	----	----	----
	AVCLongG12	5	OK	OK	----	----	----	----	----	----	----
Proxy	G6	6	OK	OK	----	----	----	----	----	----	OK
	SHQ	7	OK	OK	----	----	----	----	----	----	OK
	HQ	8	OK	OK	----	----	----	----	----	----	OK
	LOW	9	----	----	----	----	----	----	----	----	----

