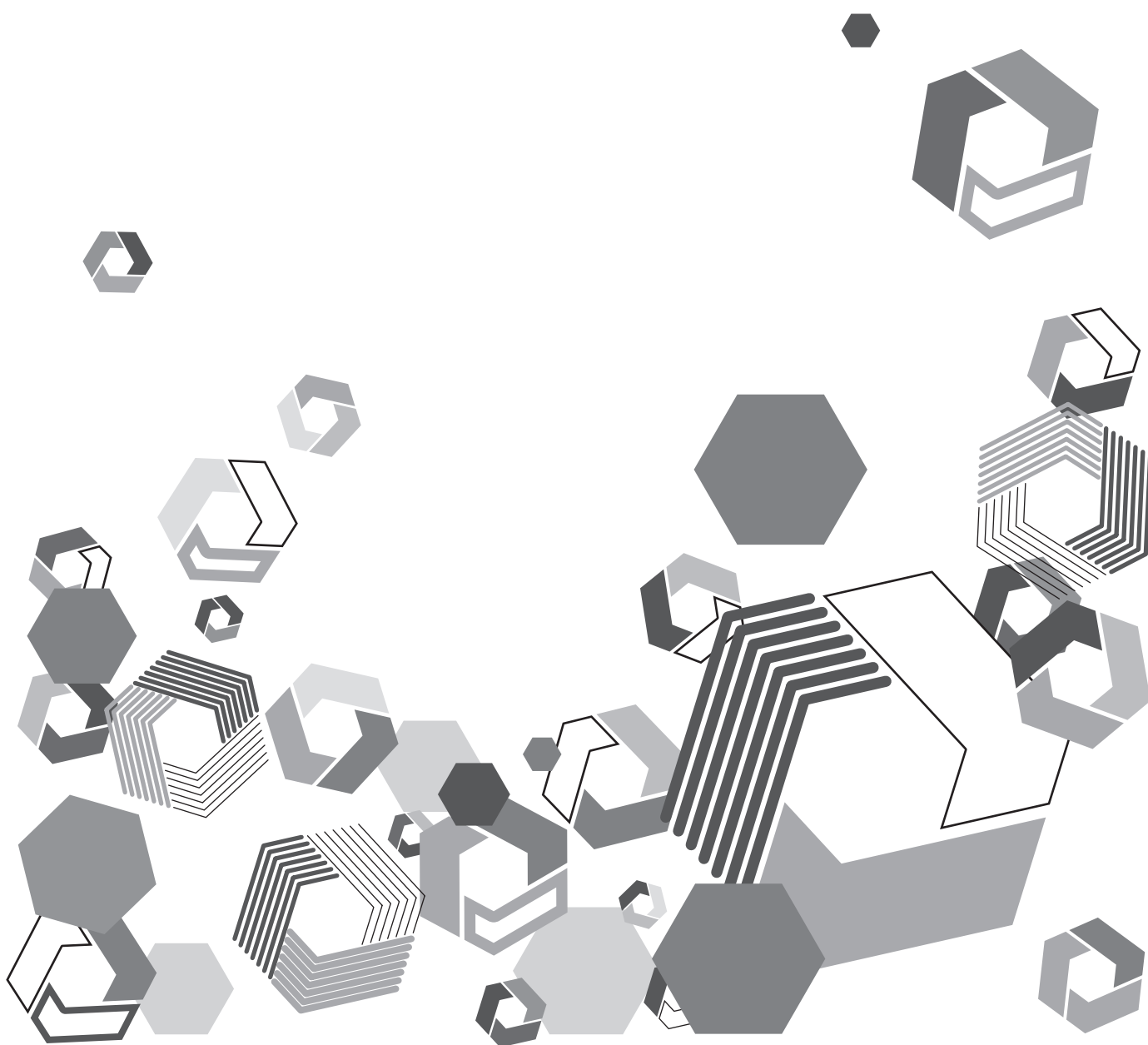


Panasonic

Installation Manual

Application
P2 Cast Bridge



Contents

Introduction.....	3	Configuring monitored Queue settings.....	12
About this guide.....	3	Customizing metadata.....	14
Precautions.....	3	Configuring user pairing.....	15
Notice regarding security.....	4	Registering new users in P2 Cast Bridge.....	17
Overview of P2 Cast Bridge.....	5	Configuring monitoring options	18
Preparing iNEWS Server.....	6	Starting P2 Cast Bridge	19
Configuring P2 Cast Bridge.....	6	Operations from the task tray icon.....	20
System requirements.....	7	Log window display.....	20
Compatible operating environments	7	Version dialog display	20
Installing P2 Cast Bridge.....	8		
Configuring connections with P2 Cast and iNEWS Server	11		

Introduction

- Microsoft and Windows are trademarks or registered trademarks of Microsoft Corporation in the United States and other countries.
- Various names, company names, product names, and other items listed in this guide are trademarks or registered trademarks of their respective companies.
- Intel® and Core™ are registered trademarks or trademarks of Intel Corporation in the United States and other countries.

About this guide

- Descriptions in this guide are based on the assumption that wired and wireless LAN settings on relevant computers are already configured. For instructions on these settings, refer to information from the device manufacturers.
- Thank you for understanding that Panasonic is not liable for any loss from incorrectly configuring network settings in order to use this software. Neither is Panasonic liable for any loss from using this software.
- Descriptions of operations on a Memory Card Camera-Recorder ("P2 Camera Recorder") and in the P2 Cast cloud application and iNEWS application ("iNEWS") are based on the assumption that you have read the P2 Camera Recorder, P2 Cast, and iNEWS user guides and understand camera and software operations.
- User interface elements in P2 Cast or iNEWS are enclosed in brackets.
- Figures and screenshots may differ from actual products or screens.
- Cross-references are noted as in (→ 00).
- This information is subject to change without notice.

Precautions

- Avoid doing the following while an operation in the application is in progress. This may cause data corruption or other problems.
 - Turn off or restart the computer.
 - Switch users or sign out
 - Disconnect from the network
 - Use other software, especially software that often writes to disk, or video recording/encoding software that is processing- or memory-intensive
- If limited system resources prevent the application from running, close other software and try logging in again.

Notice regarding security

Using this application may expose you to the following security risks.

- Leaks of personal information from this application
- Unauthorized use of the application by malicious third parties
- Interfering with or stopping use of the application by malicious third parties

Take ample security measures on the computer or mobile device used.

- Restrict use of the application to users who have passwords.
- Use passwords that are hard to guess.
- Change passwords regularly.
- Panasonic Corporation and its affiliates will not directly ask you for your password. If someone contacts you directly about your password, do not disclose it.
- To avoid information leaks, clear your browsing history and saved passwords before having your computer serviced, or before disposal or transfer of ownership.

Wireless LAN security precautions

Wireless networks offer the convenience of sharing information between computers and mobile devices via an access point wirelessly instead of requiring a wired connection, which enables you to join the network anywhere within wireless range. However, because radio waves reach everywhere within range and can pass through walls, wireless networks pose the following risks unless you complete relevant security settings.

- Spying on information sent or received

Malicious third parties may intercept and spy on wireless communication, which may include user IDs, passwords, credit card numbers, or other personal information besides the information sent and received, such as email messages.

- Intrusion

Malicious third parties intruding in home or business networks may steal personal or confidential information (which constitutes information leaks), impersonate specific people (spoofing) and release fraudulent information, tamper with and distribute intercepted information (falsification), or destroy data or systems by spreading computer viruses (destruction), among other acts.

Wireless LAN adapters and access points incorporate security mechanisms to help prevent these issues. Completing relevant security settings before using the application reduces the risk of these problems.

However, these security settings on wireless LAN equipment may not be set up by default. To reduce your security risks, before using wireless LAN equipment, always complete relevant settings as described in equipment user manuals. Also note that even when configured correctly, these security mechanisms can be compromised by special methods, due to inherent vulnerabilities in wireless LAN specifications.

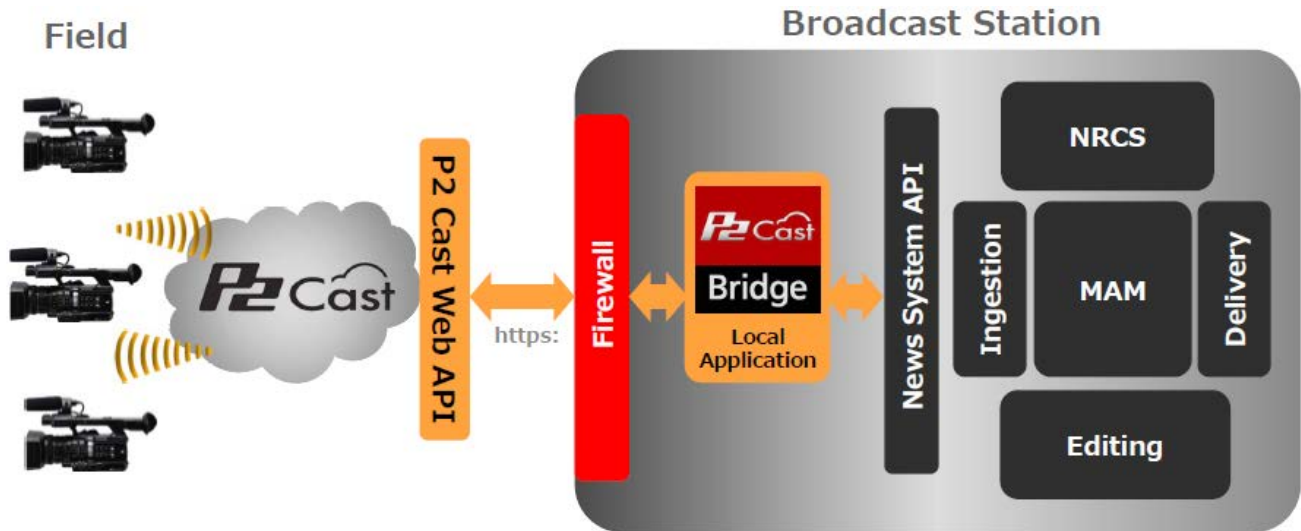
If you will use the application without completing security settings, make sure you understand the risks well. User discretion is advised in completing security settings before use.

Overview of P2 Cast Bridge

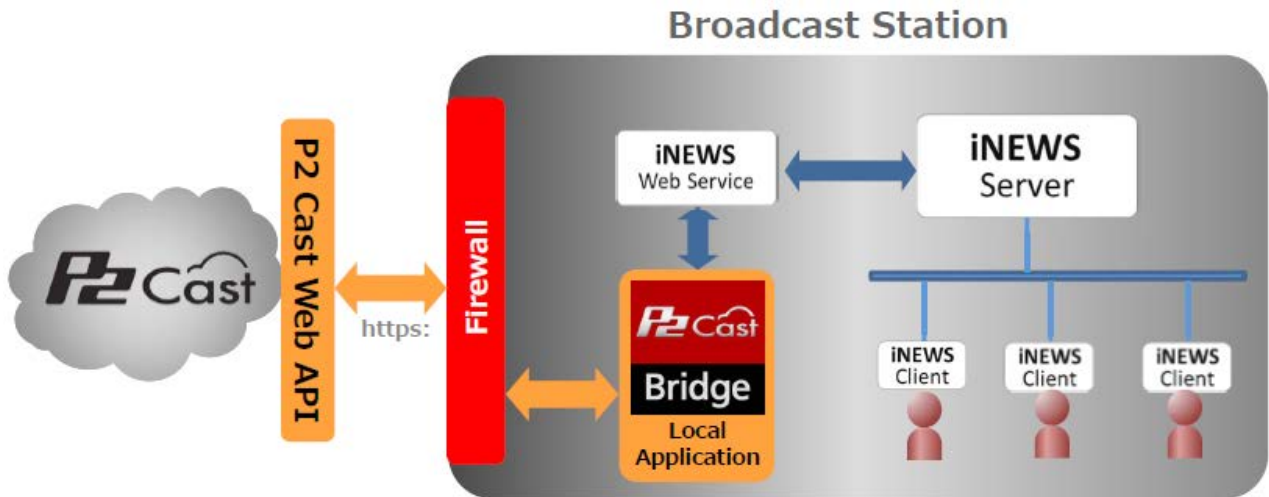
Although metadata recorded in video captured by a P2 Camera Recorder can be set on the camera itself, this is not convenient because the text is harder to check on small camera displays, and entering text with camera buttons takes time. One solution to this issue is P2 Cast, a Panasonic cloud application. Metadata can be entered and saved in P2 Cast, and then transferred and set on cameras. Metadata created with P2 Cast is entered on a computer or tablet, which makes it easy to check. This is also faster than entering metadata directly on a camera.

In many news production environments, however, metadata is usually created on a newsroom computer system (NRCS) before it is loaded on cameras in the field. In this case, broadcast stations that use P2 Cast to enter metadata would also enter it in their NRCS.

P2 Cast Bridge is an application that streamlines metadata management by automatically sending metadata entered in an NRCS at the station to P2 Cast. This eliminates the need to enter the metadata in P2 Cast.



Currently, iNEWS is the only supported NRCS that can provide metadata via P2 Cast Bridge. (As of April 2016.)
The system configuration is as follows.



P2 Cast Bridge can be installed on any computer in the station network. As long as the computer is running, P2 Cast Bridge automatically runs in the background.

This manual describes the initial setup to prepare P2 Cast Bridge to run automatically.

After initial iNEWS Server setup, linkage of iNEWS Server and P2 Cast via P2 Cast Bridge is configured, along with other settings.

Preparing iNEWS Server

- ① **First, prepare the iNEWS Web Service.**
The iNEWS Web Service is used by P2 Cast Bridge to access iNEWS Server.
- ② **Create a user account to log in to iNEWS Server from P2 Cast Bridge.**
- ③ **To enable iNEWS users to select camera operators to receive metadata, set the iNEWS Story FORM column format to Combobox. In the combo box, specify a GROUP of camera operators.**
(P2 Cast Bridge assigns metadata to operators selected in this column.)
* For details on iNEWS Web Service, Story FORM, and GROUP settings, ask your iNEWS Server system administrator.

Configuring P2 Cast Bridge

After installing P2 Cast Bridge on a computer (→ 8), complete the following initial settings in ① to ④.

Note that ④ is optional.

- ① **Configure connections between P2 Cast Bridge and P2 Cast, and between P2 Cast Bridge and iNEWS Server (→ 11)**
- ② **Configure Queues for iNEWS monitoring (→ 12)**
- ③ **Configure pairing between iNEWS users and P2 Cast users (→ 15)**
- ④ **Configure the P2 Cast Bridge monitoring interval for iNEWS Queues, and settings for iNEWS operator notification (→ 18)**

After the initial settings are complete, start P2 Cast Bridge. (→ 19)

No further user operations are required once P2 Cast Bridge is running.

System requirements

- First, confirm that your computer supports wired or wireless LAN connections.
- Operation is not necessarily ensured with all wireless or wired LAN adapters and computers.
- Check the following settings.
 - Confirm that the network is not set up as a bridged network.
 - Confirm that the application is not blocked by a firewall.

Compatible operating environments

The PC environment required for using this application is described below.

OS	Microsoft® Windows® 10 (32 bit/64 bit) Home Microsoft® Windows® 10 (32 bit/64 bit) Pro Microsoft® Windows® 10 (32 bit/64 bit) Enterprise Microsoft® Windows® 8.1 (32 bit/64 bit) Microsoft® Windows® 8.1 (32 bit/64 bit) Pro Microsoft® Windows® 8.1 (32 bit/64 bit) Enterprise Microsoft® Windows® 7 (32 bit/64 bit) Home Premium Service Pack 1 Microsoft® Windows® 7 (32 bit/64 bit) Professional Service Pack 1 Microsoft® Windows® 7 (32 bit/64 bit) Ultimate Service Pack 1 Microsoft® Windows® Server 2012 R2 Microsoft® Windows® Server 2008 R2
Necessary software	.NET Framework 4.5
CPU	Intel® Core™ 2 or higher
RAM	2 GB or more (32 bit), 4 GB or more (64 bit)
Hard disk	250 MB or more for installing application

Installing P2 Cast Bridge

Install the application on a computer connected to iNEWS Server.

Log in to P2 Cast, access the site to download the installer, and download P2 Cast Bridge. Close all other running software before starting installation.

Preparation: Register users in P2 Cast. (For details, refer to the P2 Cast User Guide.)

1 In the browser address bar, enter the URL received.

2 Enter the user ID and password received, and then click [Login].

Passwords are concealed by *.

The P2 Cast home screen is displayed.

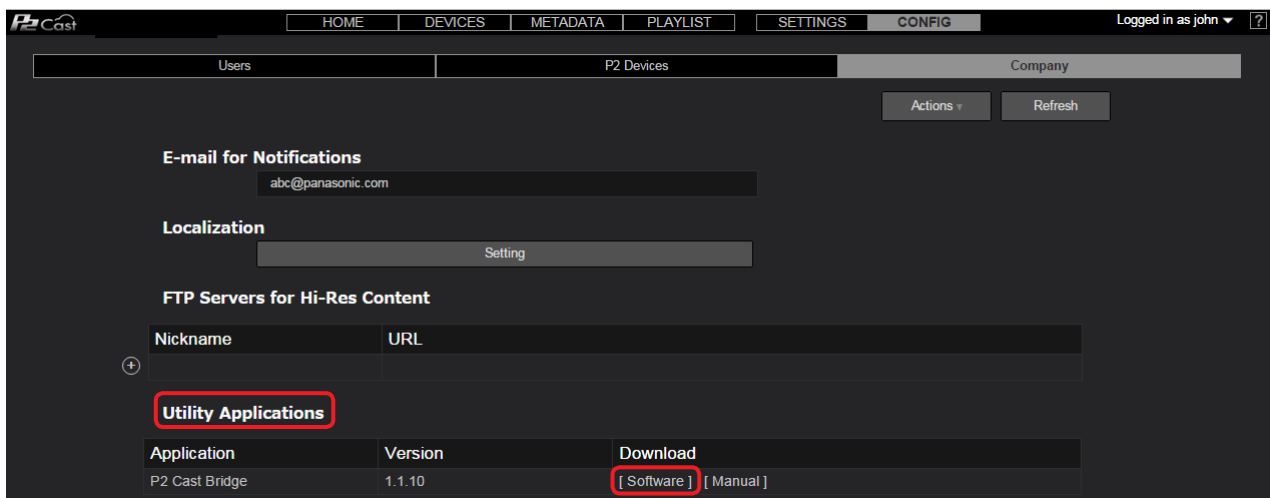
3 On the home screen, click [CONFIG]. Click [Company], and in [Utility Applications], click [Software] for [P2 Cast Bridge].

The site for downloading the P2 Cast Bridge installer is now accessed.

An archive is downloaded.

Once you extract files from the archive, the following three types of installers are displayed.

- iNewsWS_SetupGuide.exe
- P2CastBridge_x64.exe
- P2CastBridge_x86.exe



Note

- Clicking [Manual] will access the site for downloading this installation manual.

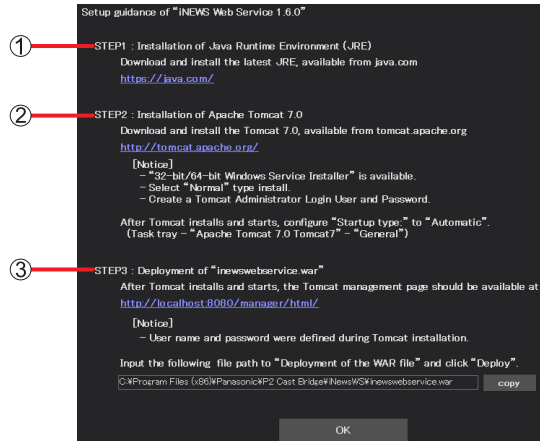
4 Download the file and start the installer.



iNewsWS_SetupGuide.exe

Installs an application to guide you through setting up iNEWS Web Service on a computer.

Install the guidance app if necessary and follow the instructions displayed to set up iNEWS Web Service.



- ① Install the Java Runtime Environment (JRE).
- ② Install Apache Tomcat.
- ③ Deploy iNEWS Web Service to Apache Tomcat.

Note

- If iNEWS Web Service is already in use, this step is not necessary.



P2CastBridge_x64.exe



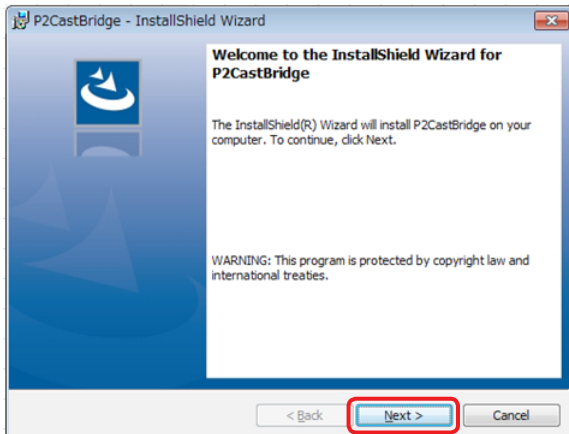
P2CastBridge_x86.exe

Install the correct version for your operating system.

P2CastBridge_x64.exe: For 64-bit OSes

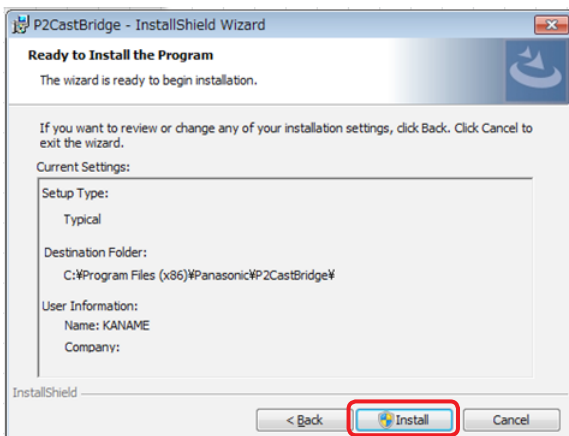
P2CastBridge_x86.exe: For 32-bit OSes

5 Click [Next].



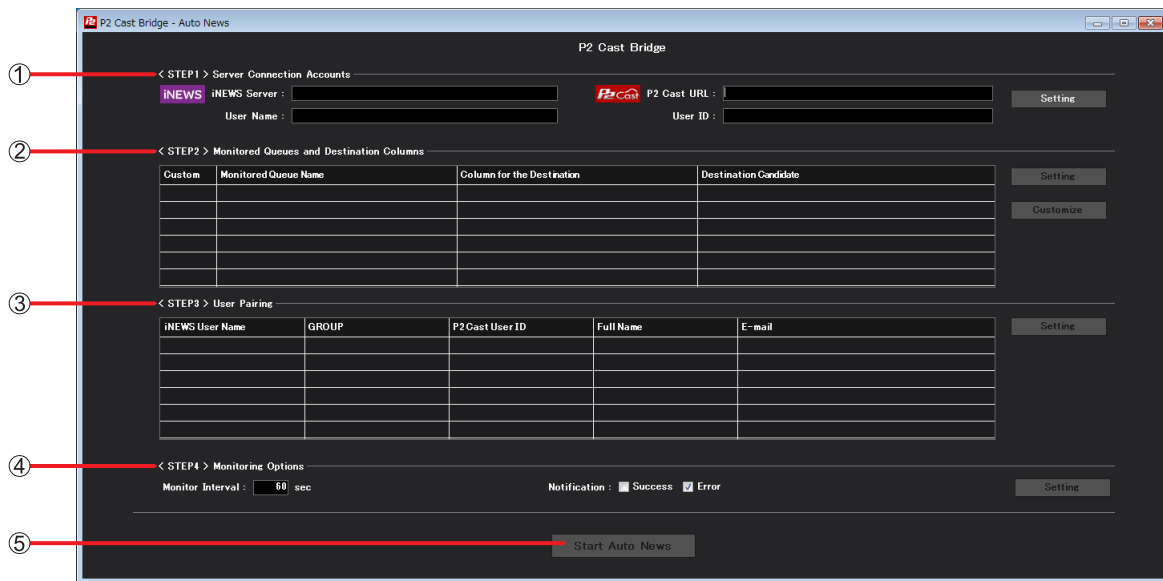
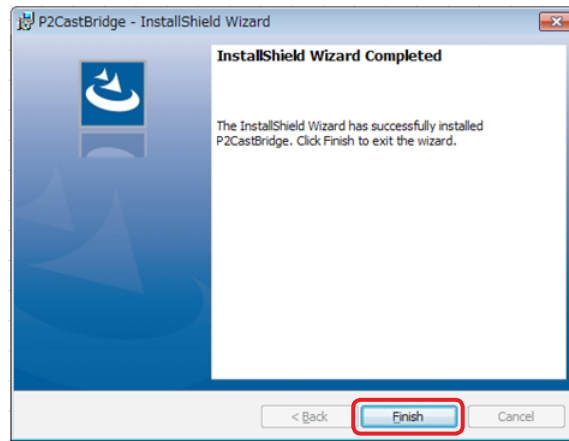
6 Click [Install].

The progress screen is displayed.



7 Click [Finish].

Once installation is finished, the main P2 Cast Bridge screen is displayed.
A P2 Cast Bridge shortcut icon is created on the computer desktop.



Main P2 Cast Bridge screen

- ① [**<STEP 1> Server Connection Accounts**]:
Screen for configuring connections between P2 Cast Bridge, P2 Cast, and iNEWS Server
- ② [**<STEP 2> Monitored Queues and Destination Columns**]:
Screen for configuring Queues for iNEWS monitoring
- ③ [**<STEP 3> User Pairing**]:
Screen for configuring pairing between iNEWS users and P2 Cast users
- ④ [**<STEP 4> Monitoring option**]:
Screen for configuring options
- ⑤ [**Start Auto News** button]:
This button becomes available once you have finished steps ① to ③ (or ④).
Clicking the button will start automatic Queue monitoring.

■ Uninstalling P2 Cast Bridge

When the application is no longer needed, uninstall it as follows.
These instructions apply to Windows 7.

- (1) Select [Start] → [Control Panel] → [Uninstall a program].
- (2) Select [P2 Cast Bridge], and then click [Uninstall].
 - Follow the instructions displayed to complete the uninstallation process.
 - Restart the computer after uninstalling the application.

Configuring connections with P2 Cast and iNEWS Server

To establish the following connections, set up a login account.

- Connection between P2 Cast and P2 Cast Bridge
- Connection between P2 Cast Bridge and iNEWS Server

1 Under Server Connection Accounts on the main P2 Cast Bridge screen, click [Setting].

The Account Setting screen is displayed.

< STEP1 > Server Connection Accounts

iNEWS iNEWS Server : P2 Cast P2 Cast URL : Setting

User Name : User ID :

2 Enter the P2 Cast and iNEWS Server URLs and other connection settings.

The main P2 Cast Bridge screen for which you entered connection settings is displayed again.

P2 Cast Bridge - Server Connection Accounts

iNEWS iNEWS Server User Name Password WSDL Server

P2 Cast P2 Cast URL User ID Password

☒ Use proxy server

☐ Use IE proxy setting

Proxy URL Proxy User ID Proxy Password

OK Cancel

- ① [iNEWS Server]: Enter the iNEWS Server URL.
- ② [User Name]: Enter the user name to log in to iNEWS Server.
- ③ [Password]: Enter the password of the user in ②. Passwords are concealed by *.
- ④ [WSDL Server]: Enter the iNEWS Web Service URL.
- ⑤ [P2 Cast URL]: Enter the P2 Cast URL you received.
- ⑥ [User ID]: Enter a user ID for which [User Management] is [Enabled] in P2 Cast.
- ⑦ [Password]: Enter the password of the user in ⑥. Passwords are concealed by *.
- ⑧ [Use proxy server]: Select this check box when using a proxy server.
- ⑨ [Use IE proxy setting]: Select this check box when using IE proxy settings.
- ⑩ [Proxy URL]: Enter the proxy URL directly. (Only when ⑧ is selected (✓).)
- ⑪ [Proxy user ID]: Enter the proxy server user ID, if necessary. (Only when ⑧ is selected (✓).)
- ⑫ [Proxy Password]: Enter the proxy server password, if necessary. (When ⑪ is entered.) Passwords are concealed by *.

3 Review the setting details and click [OK].

The Account Setting screen is displayed.

- To change the settings, repeat steps 1 to 3.

< STEP1 > Server Connection Accounts

iNEWS iNEWS Server : 10.64.221.123 P2 Cast P2 Cast URL : https:// User Name : p2cb_test001 User ID : john Setting

Configuring monitored Queue settings

Specify the iNEWS Queues for P2 Cast Bridge monitoring, as well as the users to send metadata to. The metadata to send can be customized.

- Under Monitored Queues and Destination Columns on the main P2 Cast Bridge screen, click [Setting].**
The screen for configuring monitored Queues is displayed.

- In the iNEWS folder tree, select Queues to monitor.**

Stories assigned to selected Queues are displayed in the Story FORM area.

Example: Selecting P2CASTASSIGNTEST in the ASSIGN folder as a Queue to monitor

- Click next to the iNEWS Server address to expand it.
- Click next to the ASSIGN folder to expand it.
- Click P2CASTASSIGNTEST.

The following icons are used in the iNEWS folder tree structure.

Icon	Display	Description
	Server address	iNEWS Server address
	Folder name	iNEWS Server folder • Folders contain other folders or Queues.
	Queue name	Queue in the folder • Queues have multiple stories.

Information displayed in the Story FORM area corresponds to the Story FORM as created in iNEWS (→ 6).

* For Story FORM details, ask your iNEWS Server system administrator.

3 Select desired columns with check boxes.

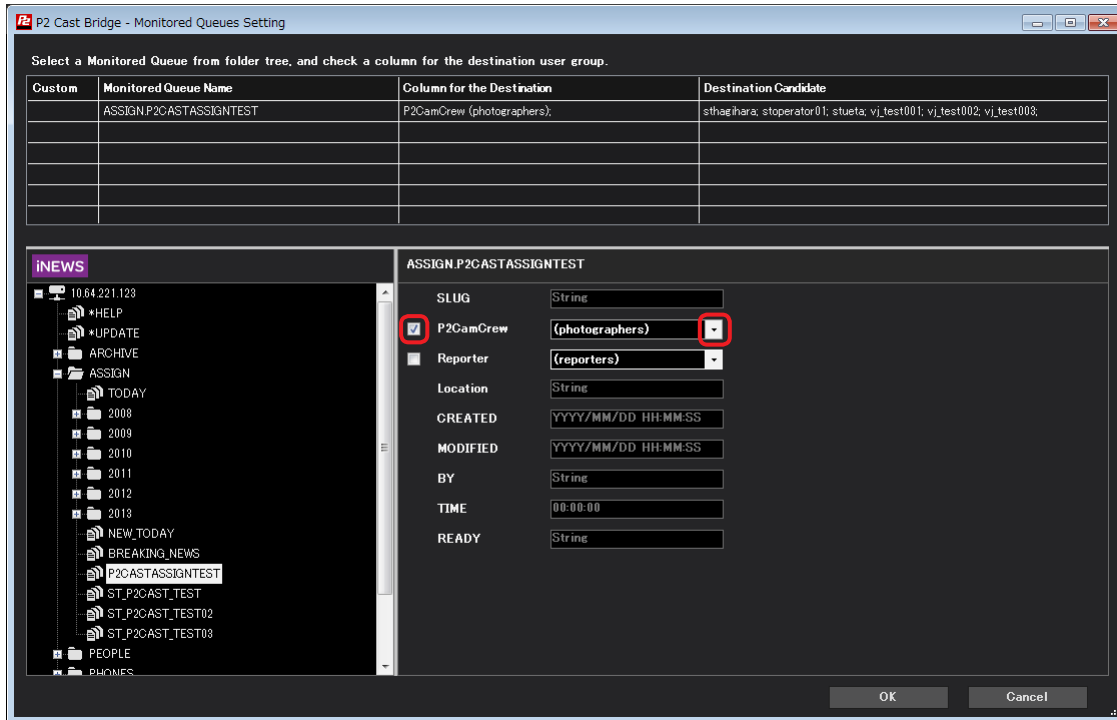
Columns with check boxes are Combobox columns that were set up in step 3 of iNEWS Server preparations (→ 6).

Members registered as a GROUP can be checked by clicking the pull-down button (▼).

Only one column can be selected per Queue.

Metadata is sent to a member specified in this column when information is entered in a Story in iNEWS.

* For details on columns or GROUPS, ask your iNEWS Server system administrator.



4 Review the setting details and click [OK].

The Queues you configured for monitoring and the candidates for receiving metadata are displayed.

If the setting details are correct, go to “Configuring user pairing” (→ 15).

• To change the settings, repeat steps 1 to 4.



Note

• To configure the metadata to send, see “Customizing metadata” (→ 14).

Customizing metadata

Information in Story FORM columns entered in iNEWS can be automatically applied as P2 Cast metadata items.

1 Under Monitored Queues and Destination Columns on the main P2 Cast Bridge screen, click [Customize].

Custom	Monitored Queue Name	Column for the Destination	Destination Candidate
	ASSIGN.P2CASTASSIGNTEST	P2CamCrew (photographers);	stgahara; stoperator01; stueta; vj_test001; vj_test002; vj_test003;

Setting
Customize

2 Click a monitored Queue.

- The Story FORM of the monitored Queue as configured in iNEWS is displayed, along with metadata information to register in P2 Cast.
- If only one Queue is displayed, go to step 3.

Custom	Monitored Queue Name	Column for the Destination	Destination Candidate
	ASSIGN.P2CASTASSIGNTEST	P2CamCrew (photographers);	stgahara; stoperator01; stueta; vj_test001; vj_test002; vj_test003;

3 Click ▼ by metadata items to register in P2 Cast, and select a column in the pull-down list.

- When a Story is created in iNEWS, the information entered in the column is applied as metadata to register in P2 Cast.

P2 Cast Bridge - Metadata Customization

Monitoring Queues

Custom	Monitored Queue Name	Column for the Destination	Destination Candidate
	ASSIGN.P2CASTASSIGNTEST	P2CamCrew (photographers);	stgahara; stoperator01; stueta; vj_test001; vj_test002; vj_test003;

iNEWS Story Form (Reference)

SLUG: String

P2CamCrew: (photographers)

Reporter: (reporters)

Location: String

CREATED: YYYY/MM/DD HH-MM-SS

MODIFIED: YYYY/MM/DD HH-MM-SS

BY: String

TIME: 00:00:00

READY: String

P2 Cast Metadata

Preservation Period

Server: 2 Days P2 Device: 0 Hours

User Clip Name: SLUG

Creator: BY

Shooter: P2CamCrew

Place Name:

Program Name: SLUG, P2CamCrew, Reporter, Location

Scene No.:

Take No.:

Reporter: SLUG

Purpose: SLUG

Object: < Story ID >

Text: ASSIGN.P2CASTASSIGNTEST

OK Cancel

Note

- If the number of characters exceeds the amount that can be entered in P2 Cast, you can customize the information up to the maximum number of characters.

4 Review the setting details and click [OK].

The metadata is now customized, and ✓ is displayed in the [Custom] column.

Go to "Configuring user pairing" (→ 15).

- To change the settings, repeat steps 1 to 4.

Custom	Monitored Queue Name	Column for the Destination	Destination Candidate
✓	ASSIGN.P2CASTASSIGNTEST	P2CamCrew (photographers);	stgahara; stoperator01; stueta; vj_test001; vj_test002; vj_test003;

Setting
Customize

Configuring user pairing

Specify registered P2 Cast users to link (pair) with registered iNEWS users.

These pairing settings are used by P2 Cast Bridge to determine recipients to send metadata.

1 Under User Pairing on the main P2 Cast Bridge screen, click [Setting].

The User Pairing screen is displayed.

iNEWS User Name	GROUP	P2 Cast User ID	Full Name	E-mail

2 Click registered iNEWS users and the corresponding P2 Cast users to pair, and then click [Link].

- Only individual users can be selected at one time.

iNEWS User Name	GROUP
sthagihara	photographers;
stoperator01	photographers;
stueta	photographers;
vj_test001	photographers;
vj_test002	photographers;
vj_test003	photographers;

P2 Cast User ID	Full Name	E-mail
administrator	Admin User	admin@us.panasonic.com
james	Williams James	james@us.panasonic.com
john	Smith John	john@us.panasonic.com
linda	Davis Linda	linda@us.panasonic.com
mary	Jones Mary	mary@us.panasonic.com
richard	Wilson Richard	richard@us.panasonic.com
susan	Moore Susan	susan@us.panasonic.com

- ① **List of registered iNEWS users:**
Lists iNEWS users and the names of their GROUPS.
- ② **List of registered P2 Cast users:**
Shows user IDs, names, and email addresses registered in P2 Cast.

Note

- Once users are paired, their information is no longer listed in ① and ②.

3 Review the setting details entered and click [OK].

Information about paired users is now displayed.

If the setting details are correct, go to “Configuring monitoring options” (→ 18), if necessary.

If no optional settings are needed, go to “Starting P2 Cast Bridge” (→ 19).

- To change the settings, repeat steps 1 to 3.

The screenshot shows a 'User Pairing' screen with a table containing the following data:

iNEWS User Name	GROUP	P2Cast User ID	Full Name	E-mail
vi_test002	photographers	richard	Wilson Richard	richard@us.panasonic.com

Red arrows point to the column headers with circled numbers: 1 for iNEWS User Name, 2 for GROUP, 3 for P2Cast User ID, 4 for Full Name, and 5 for E-mail. A 'Setting' button is located on the right side of the table.

① **[iNEWS User Name]:** User names registered in iNEWS.

② **[Group]:** GROUP names specified in iNEWS.

③ **[P2Cast User ID]:** User IDs registered in P2 Cast.

④ **[Full Name]:** Names registered in P2 Cast.

⑤ **[E-mail]:** Email addresses registered in P2 Cast.

Note

- To pair with users who have not been registered in P2 Cast, see “Registering new users in P2 Cast Bridge” (→ 17).

- 1 On the User Pairing screen, click [New].

iNEWS User Name	GROUP	P2Cast User ID	Full Name	E-mail
vj_test002	photographers;	richard	Wilson Richard	richard@us.panasonic.com

iNEWS

iNEWS User Name	GROUP
shtachihara	photographers;
stopoperator01	photographers;
stuetta	photographers;
vj_test001	photographers;
vj_test003	photographers;

P2-Cast

P2Cast User ID	Full Name	E-mail
administrator	Admin User	admin@us.panasonic.com
james	Williams James	james@us.panasonic.com
john	Smith John	john@us.panasonic.com
linda	Davis Linda	linda@us.panasonic.com
mary	Jones Mary	mary@us.panasonic.com
susan	Moore Susan	susan@us.panasonic.com


Link

Release New

OK Cancel

- User registration in P2 Cast Bridge is the same as in P2 Cast. Refer to the P2 Cast User Guide.
- Users created in P2 Cast Bridge are registered in P2 Cast.
- The User Pairing screen is displayed again.

P2 Cast Bridge - P2 Cast User Registration

 Create a new P2 Cast user to link to iNEWS user.

User ID

Password

(Confirm)

Given Name

Family Name

E-mail

Time Zone

Permissions

- ☒ Content Upload
- ☒ Content Download
- ☒ Content Browse
- ☐ Content Edit
- ☐ Metadata Edit
- ☐ Playlist Edit

Create **Cancel**

Configuring monitoring options

The following monitoring options can be configured. Note that these settings are optional.

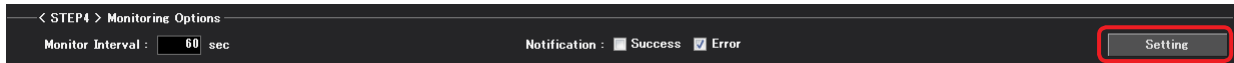
- Setting for how often, in seconds, P2 Cast Bridge monitors iNEWS Queues
- Setting for iNEWS operator notification based on P2 Cast Bridge events

These are examples of events that may occur.

- Notify when metadata is registered in P2 Cast
- Notify when metadata cannot be registered, as when connection errors occur

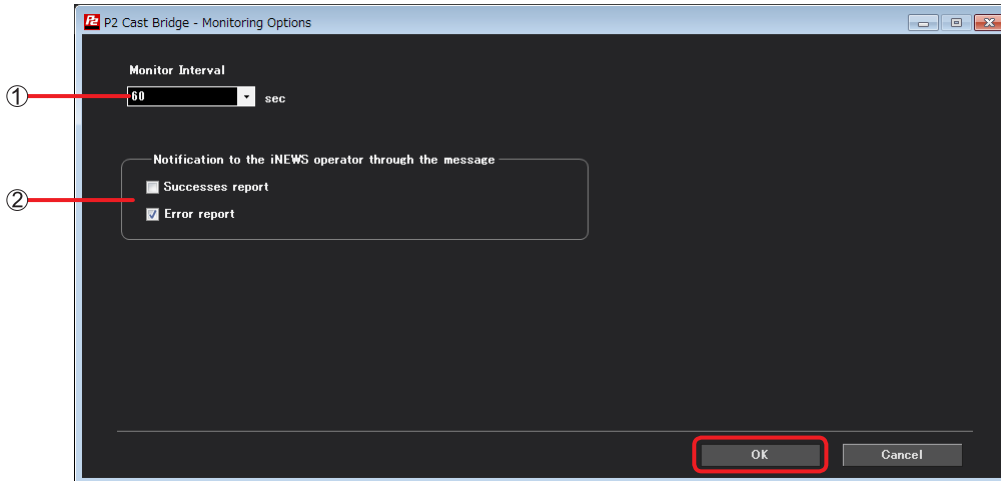
1 Under Monitoring Option on the main P2 Cast Bridge screen, click [Setting].

The screen for configuring monitoring options is displayed.



2 Set monitoring options as needed and click [OK].

The main P2 Cast Bridge screen is displayed again.



① [Monitoring Interval]:

Specify how often, in seconds, to monitor Queues.

Select [10], [60], [300], or [600] by clicking the pull-down button (▼). (Default: [60])

② [Notification to the iNEWS operator through the message]:

Specify whether to notify iNEWS operators of success or failure.

[Successful report]: Send notification when metadata is registered in P2 Cast.

[Error report]: Send notification when metadata cannot be registered, as when connection errors occur.

Starting P2 Cast Bridge

After initial settings are complete, start automatic Queue monitoring.

When a Story FORM is created for a monitored Queue in iNEWS, the metadata is automatically registered in P2 Cast.

As long as the computer is running, P2 Cast Bridge automatically runs in the background.

1 On the main P2 Cast Bridge screen, click [Start Auto News].

The screen for configuring monitoring options is displayed.

P2 Cast Bridge - Auto News

P2 Cast Bridge

< STEP1 > Server Connection Accounts

iNEWS iNEWS Server : 10.64.221.123 P2 Cast URL : https:// User ID : john

User Name : p2cb_test001

< STEP2 > Monitored Queues and Destination Columns

Custom	Monitored Queue Name	Column for the Destination	Destination Candidate
	ASSIGN.P2CASTASSIGNTEST	P2CamCrew (photographers)	sthaihara, stopoperator01, stueta, vj_test001, vj_test002, vj_test003,

< STEP3 > User Pairing

iNEWS User Name	GROUP	P2 Cast User ID	Full Name	E-mail
vi_test002	photographers	richard	Wilson Richard	richard@us.panasonic.com

< STEP4 > Monitoring Options

Monitor Interval : 60 sec Notification : ☐ Success ☒ Error

Start Auto News



A P2 Cast Bridge icon is displayed in the computer's task tray.

After automatic Queue monitoring is started, P2 Cast Bridge will automatically start a resident task when the operating system starts up.

Operations from the task tray icon

1 Right-click the P2 Cast Bridge icon in the task tray.

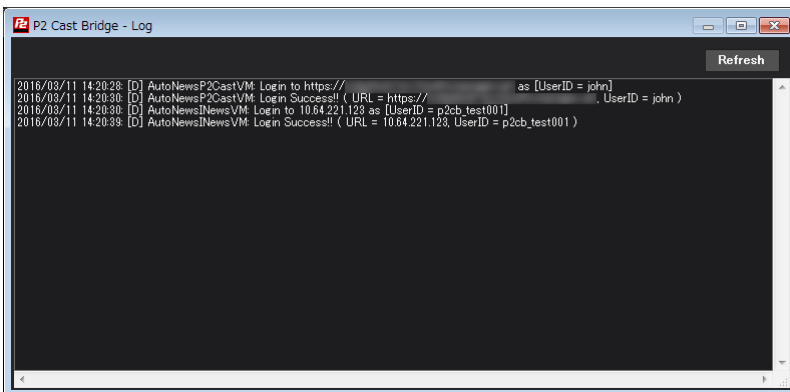
A pop-up window is displayed.



- ① **[Setting]:** Display the main P2 Cast Bridge screen.
This screen can also be displayed by double-clicking the icon.
- ② **[Show Log]:** Display the log window. (→ see below)
- ③ **[Start Auto News]:** When Queue monitoring is stopped, click to start monitoring.
- ④ **[Stop Auto News]:** During Queue monitoring, click to stop monitoring.
- ⑤ **[Version]:** Display a version dialog. (→ see below)
- ⑥ **[Exit]:** When Queue monitoring is stopped, click to close P2 Cast Bridge.
The task tray icon is no longer displayed.

Log window display

- Displays up to 500 P2 Cast Bridge events. When there are more than 500 events, older information is deleted.
- Click [Refresh] to clear all log messages.



Version dialog display

- Shows the version of P2 Cast Bridge and license information.
- Click [OK] to close the dialog.

