

Firmware update procedure

Recording module: AU-VREC1,
Camera module: AU-V23HS1, AU-V35C1

NOTE: AU-V35C1 only

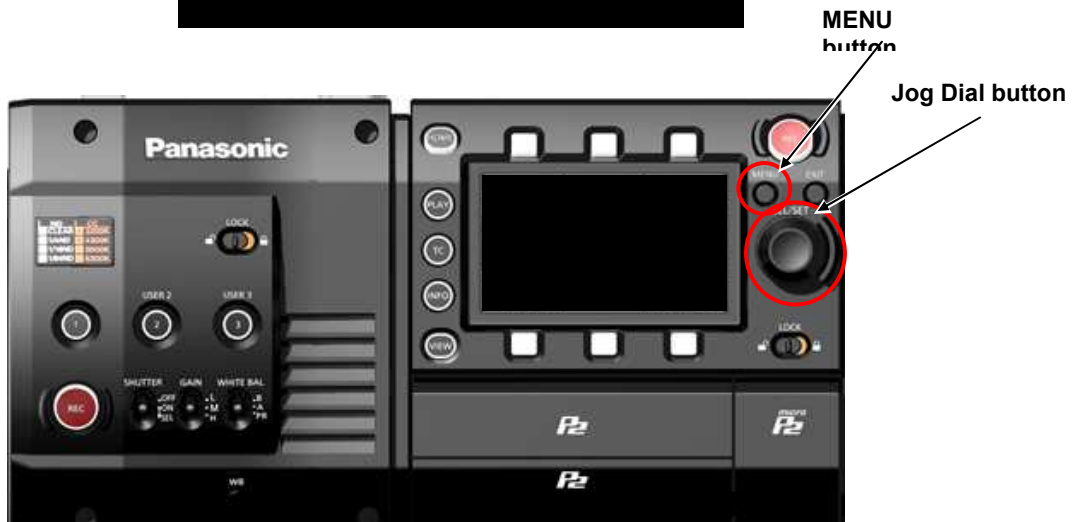
1. If you update the firmware version 7.50-00-0.00 or lower, perform ABB after the update is completed.
2. If you update the firmware version 3.01 or lower, perform INITIAL ABB first, and then ABB, after the update is completed.

1. How to check firmware version

1. Connect Camera module to Recording module. Switch ON the power of the camera recorder.
2. Press **MENU** button. Select "> SYSTEM SETTINGS >INFORMATION >VERSION" to display the current version with the **Jog Dial** button.



Version display example



NOTE: The firmware versions of the camera module and the recording module must match to operate this unit. Firmware of the camera module can be updated only when the recording module is connected.

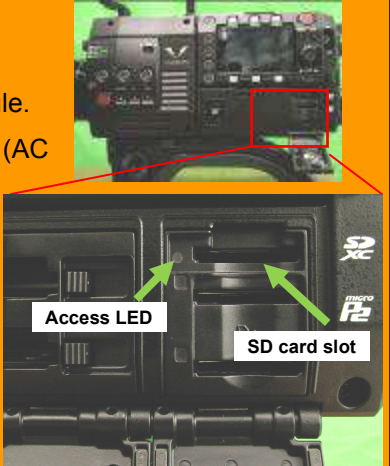
2. Preparation

Prepare following equipment and a firmware package prior to update.

Name	Qty	Remark
SD memory card	1	MAX 64GB MIN 256MB Note: microP2 card can also be used as substitution for SD cards but the card has to be formatted as SD CARD in the SD card slot in advance.
Firmware package (VSI****.zip)	1	Can be downloaded at: http://panasonic.biz/sav/pass_e
AC adaptor	1	
Computer (PC/Mac)	1	Needed for downloading, unzipping, copying firmware package

⚠ Important: Please read before performing update:

- For updating, it is necessary to connect Camera module to Recording module.
- Update work may take approximately 60 minutes, use secure power supply (AC adaptor), unexpected shutdown while in update may cause an unrecoverable failure.
- Do NOT eject SD memory card while update is in progress (while access LED blinks), interrupting communication between SD card and equipment may cause unrecoverable failure.



3. Updating firmware

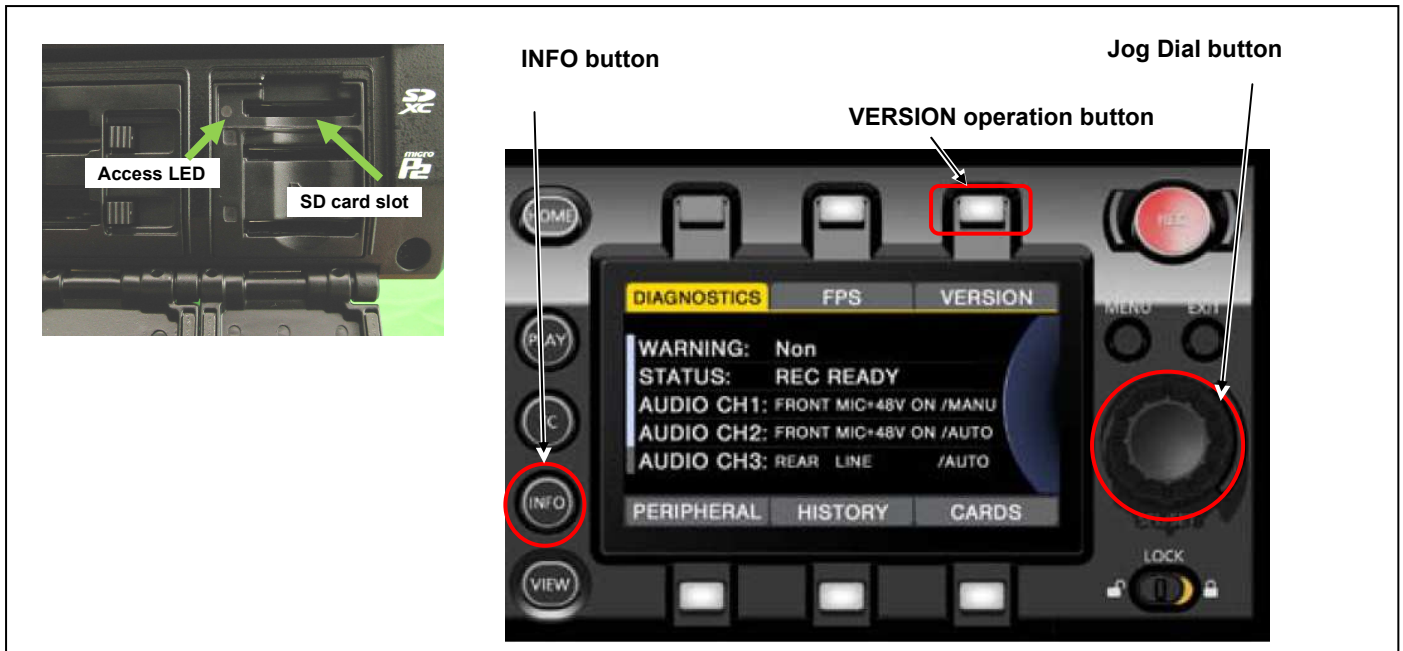
[Preparation]

1. Insert an SD memory card into the SD card slot (NOT microP2 card slot) on the unit.
2. Format the SD card (MENU : SYSTEM SETTINGS > CARDS/MEDIA > FORMAT CARD > SD CARD)
Visit Panasonic professional video support website <http://panasonic.biz/sav/pass_e> and download "vsi*****.zip" firmware package.
3. Extract the ZIP package (you will see "PRIVATE" folder).
4. Mount the formatted SD card to the computer then copy the **"PRIVATE"** folder to the SD card.



[Perform update]

5. Insert the SD card into the SD card slot (NOT microP2 card slot) on the unit.
6. Disconnect the cable between the viewfinder and the camera body.
7. Press **INFO** button to display INFO screen. Press the operation button of **VERSION** and press the Jog Dial..



8. When "**UPDATE**" menu item appears, press the operation button of **UPDATE > OK**



9. Wait until the "Version update successful" dialog is displayed. It may take **approximately 60 minutes (Maximum)**.

10. Remove the SD card.
11. Switch OFF the power, and disconnect and connect DC power > switch ON the power to complete.
12. Make sure the firmware version.



MENU:

SYSTEM SETTINGS > INFORMATION > VERSION

Please refer to the next page

■ **NOTE: [AU-V35C1 only] Perform the following after the update is completed.**

1. If you update the firmware version 7.50-00-0.00 or lower, perform ABB ((1)).
2. If you update the firmware version 3.01 or lower, perform INITIAL ABB ((2)) first, and then ABB ((1)).

(1) ABB

The blemish compensation is performed. If the temperature of the sensor is between 42 and 44 degrees, the compensation effect is maximized.

(The minimum requirement is between 38 and 44 degrees.)

MENU : SYSTEM SETTINGS > SYSTEM MODE
FREQUENCY 59.94p
PIXCEL 4096 x 2160
MAIN CODEC AVC-Intra4K-LT
HIGH SPEED OFF (1-60fps)



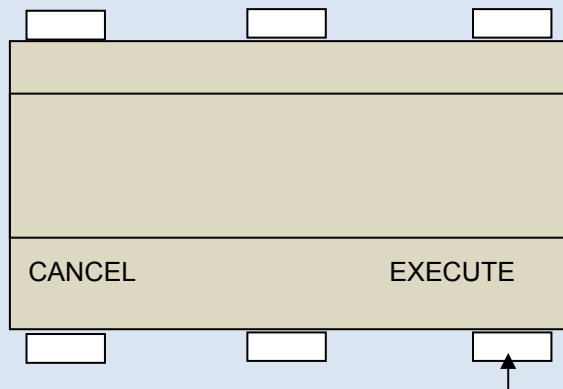
Reboot the camera and wait for 15 minutes or longer with the power on.
Check SENSOR TEMP and, if it is not between 38°C and 44°C, wait for a further 15 minutes or so.
MENU: SYSTEM SETTINGS > INFORMATION > SENSOR TEMP between 38°C and 44°C
(Temperature readings can be updated by pushing the jog dial button two times.)



Be sure to put the lens cap or mount cap to block out the light completely.



MENU: SYSTEM SETTINGS > COLOR SETTING
MAIN V-709
MENU: CAMERA SETTINGS > Enhanced > Enhanced SW > ON
MENU: CAMERA SETTINGS > BLACK > ABB



[EXECUTE] After about a minute, "ABB ACTIVE" is displayed on the panel.
When "ABB OK" is displayed, ABB is completed..

(2) INITIAL ABB

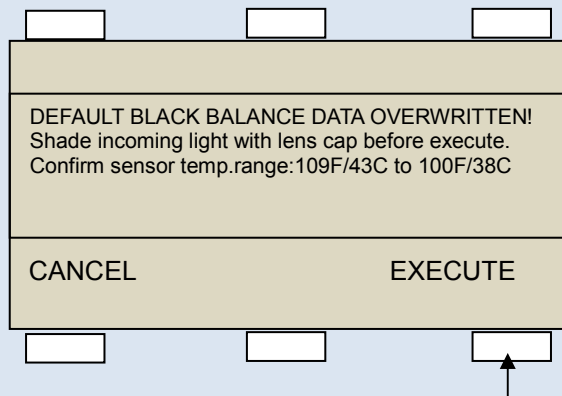
After updated from Ver. 3.01 or lower: The reference Black for 120P mode is determined.

MENU : SYSTEM SETTINGS > SYSTEM MODE
FREQUENCY 59.94p
PIXCEL 4096 x 2160
MAIN CODEC AVC-Intra4K-LT
HIGH SPEED ON (60-120fps)

Reboot the camera and wait for 15 minutes or longer with the power on.
Check SENSOR TEMP and, if it is not between 38°C and 43°C, wait for a further 15 minutes or so.
MENU: SYSTEM SETTINGS > INFORMATION > SENSOR TEMP between 38°C and 43°C
(Temperature readings can be updated by pushing the jog dial button two times.)

Be sure to put the lens cap or mount cap to block out the light completely.

MENU: SYSTEM SETTINGS > COLOR SETTING
MAIN V-709
MENU: CAMERA SETTINGS > Enhanced > Enhanced SW > ON
MENU: CAMERA SETTINGS > BLACK > INITIAL ABB (HIGH SPEED)



[EXECUTE] After about a minute, "ABB ACTIVE" is displayed on the panel.
When "ABB OK" is displayed, ABB is completed..

4. Troubleshooting

Please be careful not to turn off the power during the update process.

If the update process is not completed *, please reboot the camera recorder without ejecting the SD memory card.

The interrupted process will be resumed. (* An error is displayed or the update progress bar is stuck for one hour or more)

1. Update is failed with VERSION UPDATE ERROR! (ERR5)



Check points

- Is the folder name in the SD memory card surely "private"? Its folder name may often be renamed by computers automatically when downloaded and unzipped the package (example: renamed to private-2). In this case, rename it to "private" and try again.
- Is the directory of the firmware package correct as shown below?

SD memory card ▶ private ▶ meigroup ▶ pavcn ▶ sbg ▶ p2sd ▶ fw ▶ vsi****.pkg
- Is the firmware surely for the VARICAM35 (AU-V35C1G), VARICAM HS (AU-V23HS1) and recorder (AU-VREC1G)?

However software cannot be updated, please contact Panasonic Service Engineering.