

AW-RP50 Firmware Update Procedure

Please be sure to read this first.

The update of AW-RP50 is performed via a network on PC.

There might be accidents in the process of updating such as changing the unit settings and others by mistake. Please perform the update after taking every situation into careful consideration.

It is recommended that the current settings should be noted down in advance.

◆[Disclaimer of warranty]

IN NO EVENT SHALL Panasonic Corporation BE LIABLE TO ANY PARTY OR ANY PERSON, EXCEPT FOR REPLACEMENT OR REASONABLE MAINTENANCE OF THE PRODUCT, FOR THE CASES, INCLUDING BUT NOT LIMITED TO BELOW:

- (1) ANY DAMAGE AND LOSS, INCLUDING WITHOUT LIMITATION, DIRECT OR INDIRECT, SPECIAL, CONSEQUENTIAL OR EXEMPLARY, ARISING OUT OF OR RELATING TO THE PRODUCT;
- (2) PERSONAL INJURY OR ANY DAMAGE CAUSED BY INAPPROPRIATE USE OR NEGLIGENT OPERATION OF THE USER;
- (3) UNAUTHORIZED DISASSEMBLE, REPAIR OR MODIFICATION OF THE PRODUCT BY THE USER;
- (4) INCONVENIENCE OR ANY LOSS ARISING WHEN IMAGES ARE NOT DISPLAYED, DUE TO ANY REASON OR CAUSE INCLUDING ANY FAILURE OR PROBLEM OF THE PRODUCT;
- (5) ANY PROBLEM, CONSEQUENTIAL INCONVENIENCE, OR LOSS OR DAMAGE, ARISING OUT OF THE SYSTEM COMBINED BY THE DEVICES OF THIRD PARTY;
- (6) ANY INCONVENIENCE, DAMAGES OR LOSSES RESULTING FROM ACCIDENTS CAUSED BY AN INADEQUATE INSTALLATION METHOD OR ANY FACTORS OTHER THAN A DEFECT IN THE PRODUCT ITSELF;
- (7) LOSS OF REGISTERED DATA CAUSED BY ANY FAILURE;
- (8) ANY DAMAGE OR CLAIMS DUE TO LOSS OR LEAKAGE OF IMAGE DATA OR SETTING DATA SAVED ON THIS UNIT OR ON A MEMORY CARD OR COMPUTER.

◆[Network security]

As connected to a network, your attention is called to the following security risks.

- (1) Leakage or disclosure of information transmitted via this unit
 - (2) Unauthorized use of this unit by a third person with malicious intent
 - (3) Interference or stoppage of this unit by a third person with malicious intent
- It is your responsibility to take sufficient network security measures such as those described below to protect yourself against the above risks.

+ Use this unit in a network secured by a firewall, etc.

+ If this unit is used in a system with a computer connected, make sure that checks for and removal of computer viruses and malicious programs are implemented regularly.

+ Do not install the unit in a location where the unit, cables, and other parts may be easily damaged.

1. Preparation

The update of AW-RP50 is performed via a network using the RP50 Updating Tool (RP50Update.exe). In order to use the Updating Tool, a PC to execute the tool and the AW-RP50 must be connected to a network.

<Required PC environment>

<CPU> Intel Core2 DUO 2.4 GHz or faster recommended

<Memory> Windows XP : 512 MB or more
Windows Vista, Windows 7: 1 GB or more

<Network function> 10BASE-T or 100BASE-TX

<Image display function> Resolution: 1024 x 768 pixels or more, Color generation: True Color (24 bits or more)

<Supported OS> Windows XP, Windows Vista, Windows 7

<Hard disk drive> At least 50 MB of free memory

< Copy to file for update >

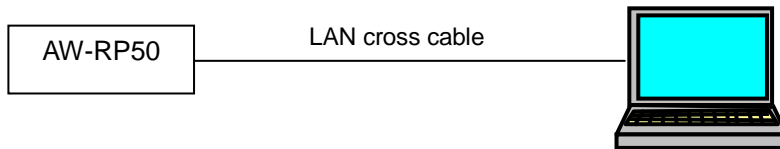
1. Download the file for the update from "Support " web site.
Click next to "Service and Support" tab. <http://pro-av.panasonic.net/en/>
2. Copy the file "*****.zip" to hard disk of your PC and extract the file.
The folder contains the following two software programs.

Firmware *****.r5d

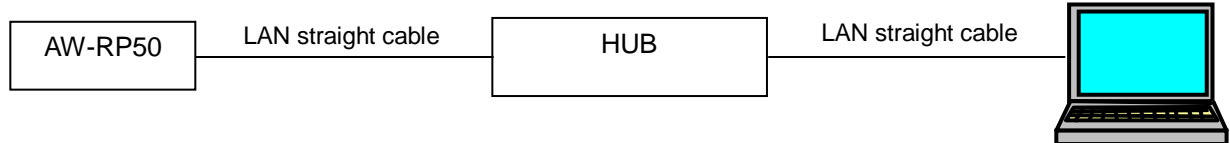
Updating Tool RP50Update.exe

< Connection AW-RP50 to PC >

< When LAN cross cable is used >



< When LAN straight cable is used >



The LAN cross cable is used when connecting a personal computer directly to the unit's LAN connector for IP control, and the LAN straight cable is used when making the connection through a switching hub.

Select an IP address for the personal computer within the private address range while ensuring that it is different from the address of the unit. Set the subnet mask to the same address as the unit.

Example

AW-RP50 192. 168. 000. 009

PC 192. 168. 000. 100

Unit's IP address and subnet mask (factory settings)

IP address : 192.168.000.009

Subnet mask : 255.255.255.000

Range of private addresses: 192.168.0.1 to 192.168.0.254

AW-RP50 MENU Items

*In order for the setting to take effect, the unit must be restarted. Turn off the unit's power , and then turn it back on again.

IP Address [SYSTEM] -> [NETWORK] -> [1. IP ADDRESS]

Subnetmask [SYSTEM] -> [NETWORK] -> [2. SUBNETMASK]

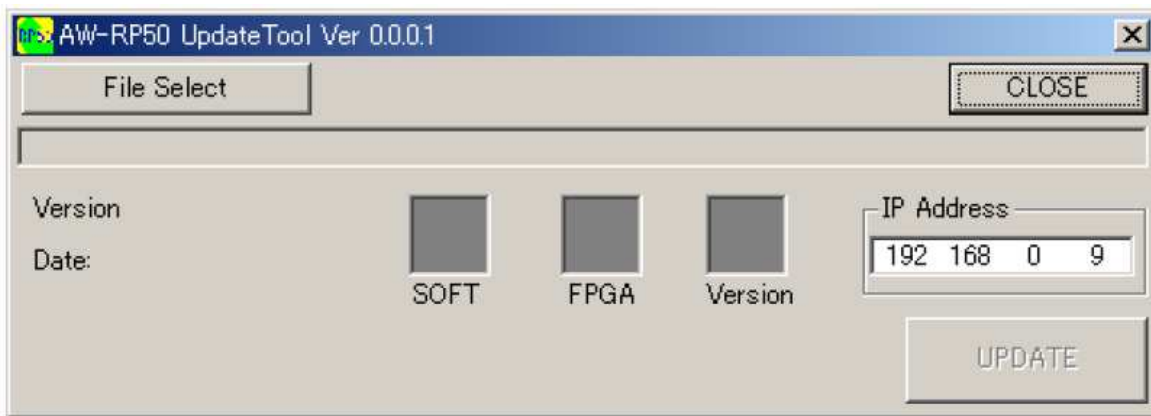
2. Update Procedure

The update of AW-RP50 is performed via a network on PC.

There might be accidents in the process of updating such as changing the unit settings and others by mistake. Please perform the update after taking every situation into careful consideration.

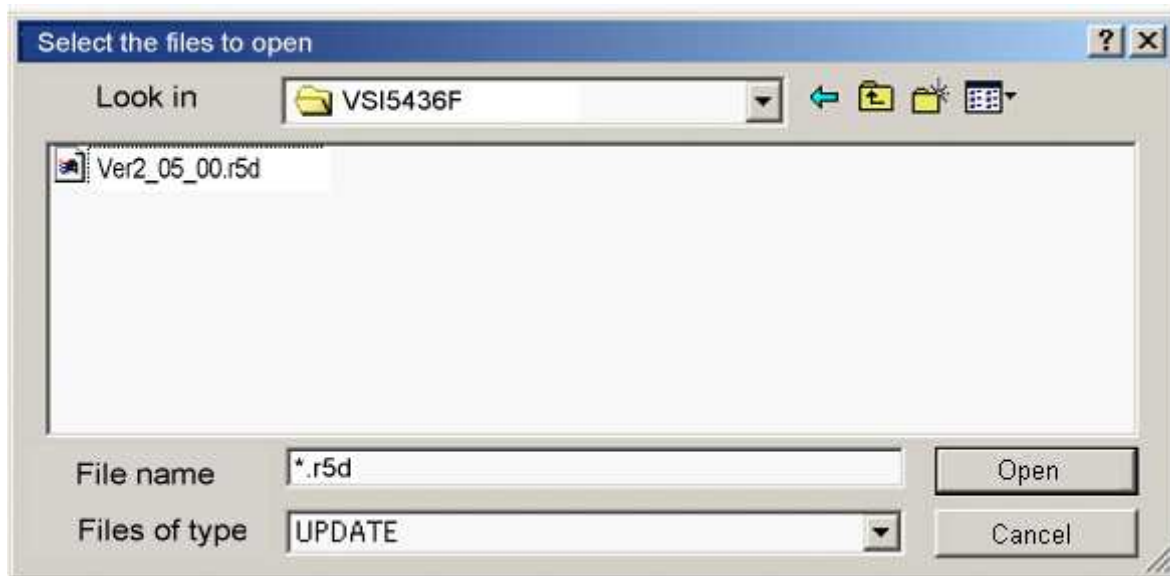
It is recommended that the current settings should be noted down in advance.

1. Turn on the AW-RP50, Check PC connecting a local network.
Do not use "Setup Software" or "Easy IPSetup Software" at the same time.
2. When the Updating Tool (RP50Update.exe) is launched the following dialog box will appear.

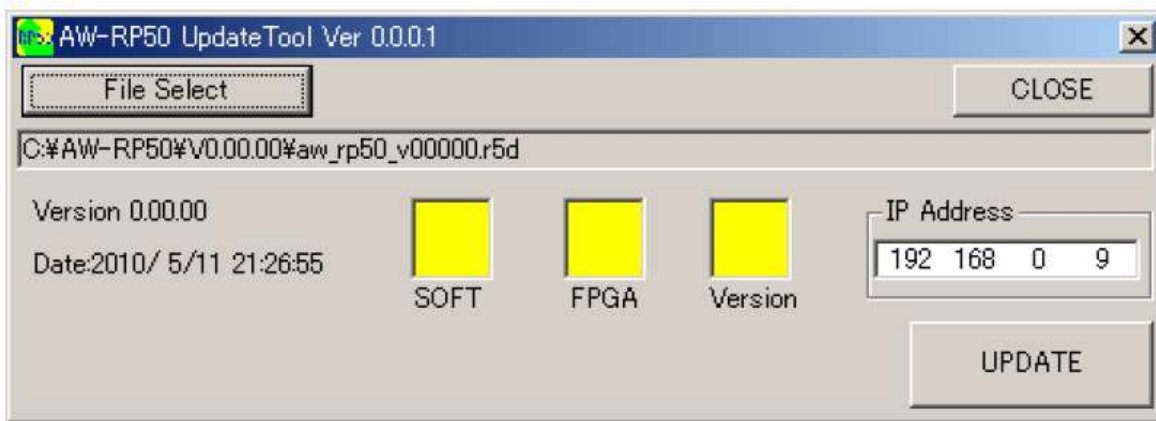


3. Click the [File Select] button to display the dialog box below and select the relevant file.

Firmware *****.r5d



4. Once the correct update file is selected the file version and creation date will be displayed as below.



5. Check the version and date, and that the IP address is correctly set in the AW-RP50, then click the [UPDATE] button. Once the updating begins each item will be displayed as [OK] as the updating is successfully completed.

When the updating is completed successfully for all items a dialog box stating "The update was completed" will appear and all the icons will show [OK].



6. Once the data has been successfully written turn the power off.
Check that the BOOT-SW (SW1) is set in the NM, turn the power on again and activate it.
7. Confirm the version.

AW-RP50 MENU Items

[SYSTEM] -> [VERSION] -> [1. SYSTEM VER : X.XX.XX]