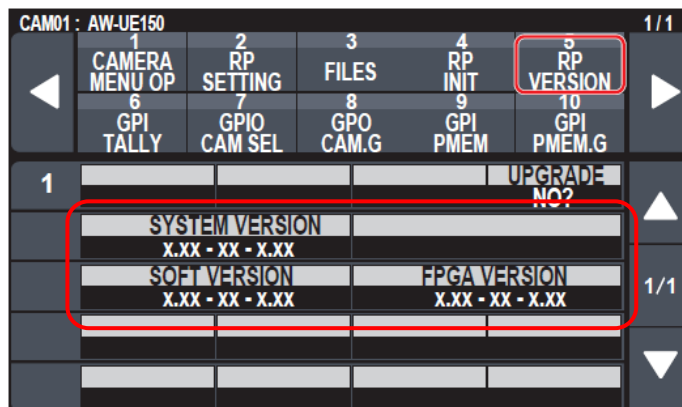
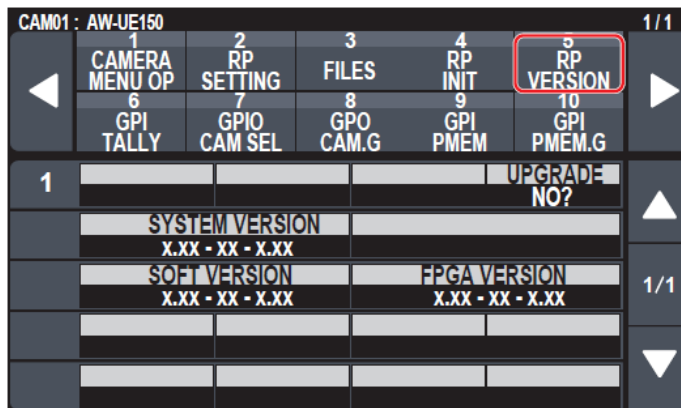


# AW-RP150 remote camera controller Software update procedure

## 1. Version display and Preparation

### 1-1. The version is displayed in menu

1. Turn on the power and press the MAINTENANCE button. **MAINTENANCE** menu appears.
2. Select "RP VERSION" by touching the RP VERSION. Each Software version can be confirmed.



Version display example

## 1-2. Preparation

### **CAUTION: Before Updating Software**

#### **Do not power down or pull card while upgrading.**

If the program quits during loading, the data will be erased or part writing condition and the restart is not made.

#### **< Preparation for SD memory card >**

1. One piece of SD memory cards (SD: 64MB to 2GB, SDHC: 64MB to 32GB memory card) is required. Use only SD memory cards that comply with the SD or SDHC specifications.
2. Insert an SD memory card into the card slot of this unit and format it.

**NOTE:** SD memory card used in this unit requires to be conformed to SD standards. Be sure to format SD memory card on this unit.

#### **< Copy the update file >**

1. Download Image Data "\*\*\*\*\*.zip" for the update from the following support web site.  
[http://pro-av.panasonic.net/en/ Service and Support](http://pro-av.panasonic.net/en/Service%20and%20Support)
2. Copy the file "\*\*\*\*\*.zip" to hard disk of your PC and extract the file.
3. Insert a formatted SD memory card into the card slot of PC.
4. Copy the folder "PRIVATE" to one piece of SD memory cards. The downloaded update files are included in folder "PRIVATE".

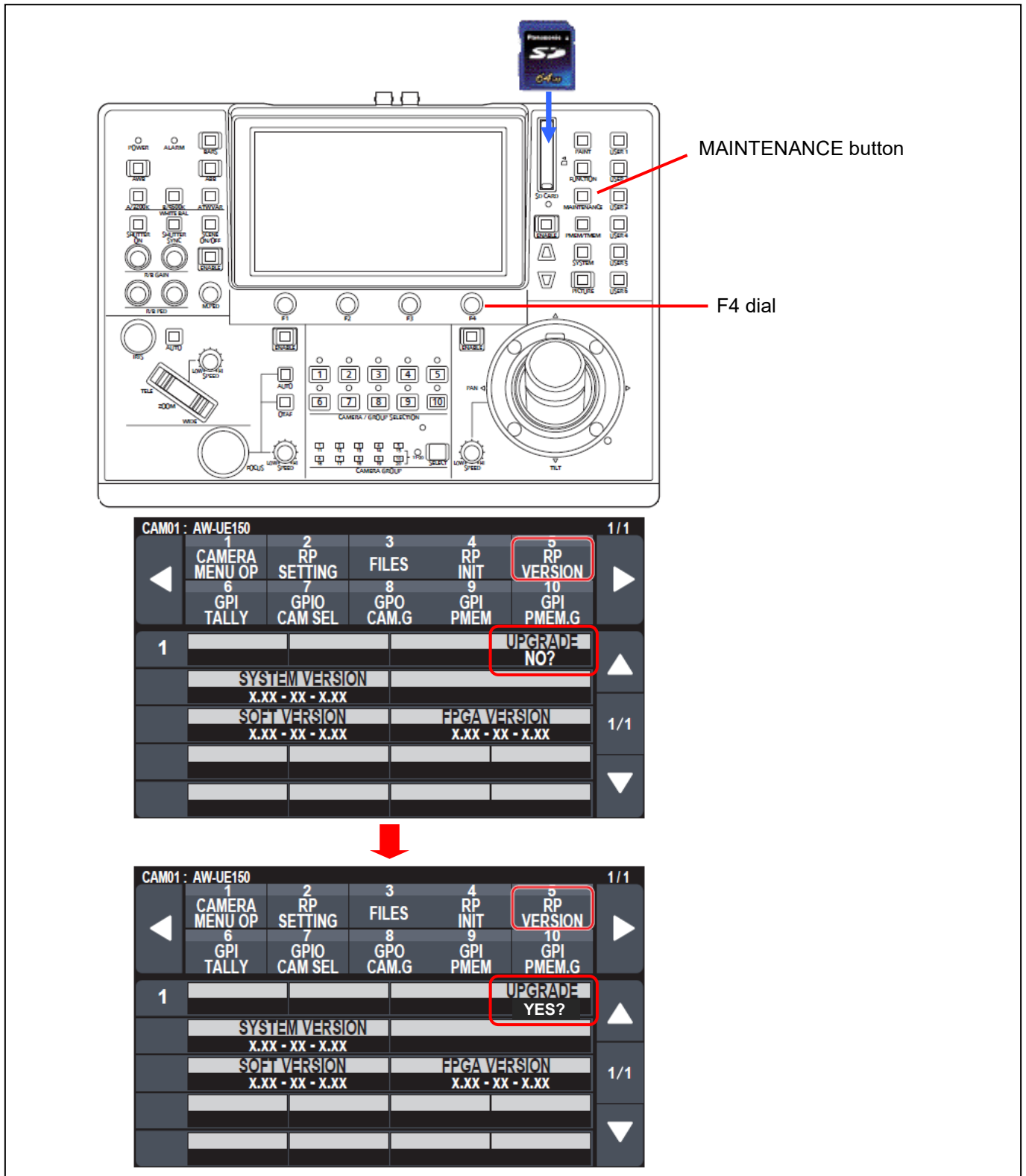
**NOTE:** Do not change the construction of folder and file name. The folder construction shown in the following and top of directory should be "PRIVATE".

**Folder: PRIVATE \ MEIGROUP \ PAVCN \ SBG \ SYSCAM \ FW \ RP150**

Update file: "RP150.r5d"

## 2. Update procedure

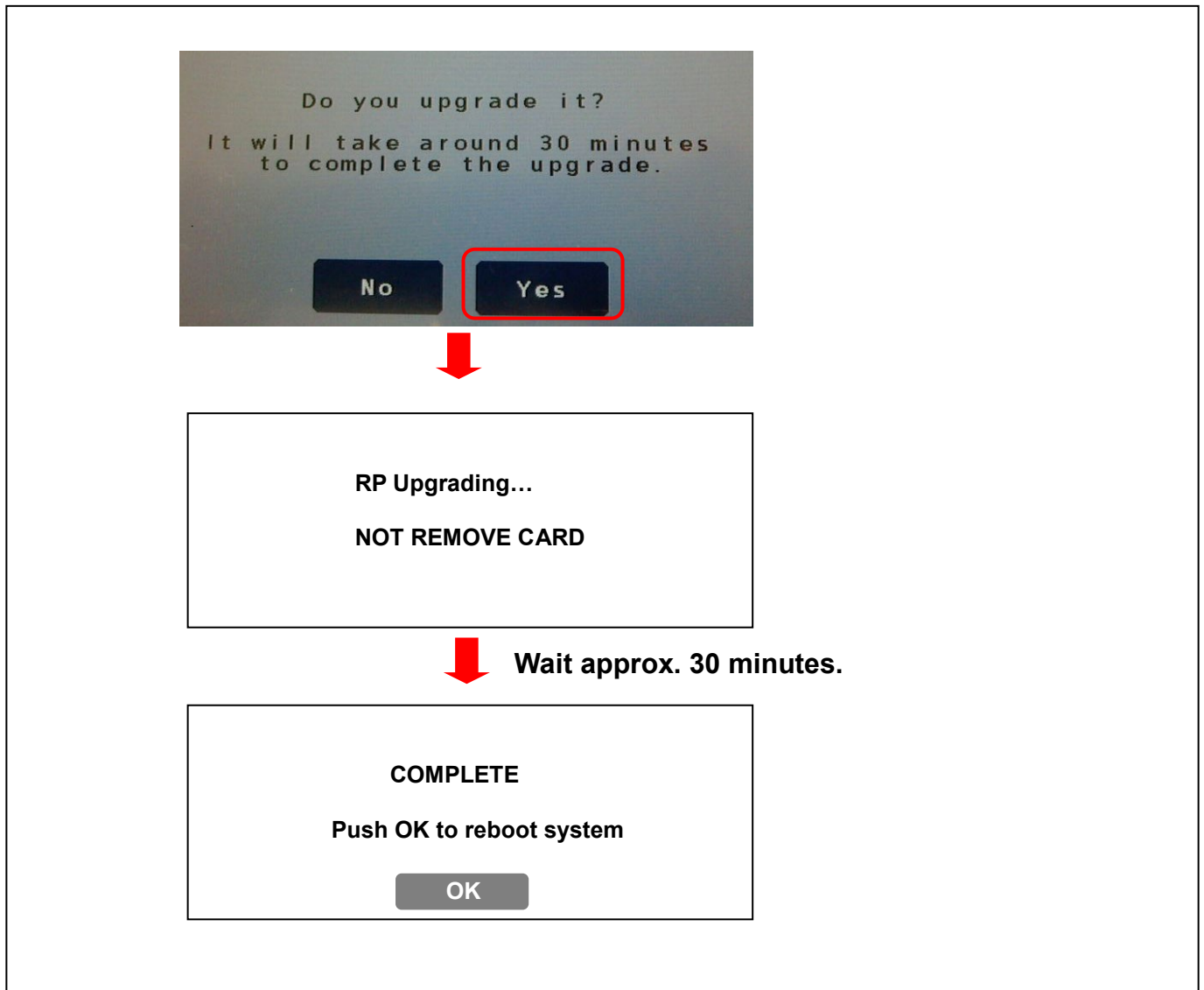
1. Insert the SD memory card into the SD memory card slot.
2. Turn on the power and press the **MAINTENANCE** button. MAINTENANCE menu appears.
3. Select "RP VERSION" by touching the **RP VERSION**.
4. Select "**UPGRADE YES?**" by turning the F4 dial, and press the F4 dial. Confirm dialog appears.



5. Touch **“Yes”** so that the update starts.  
**NOTE:** When touching **“No”**, the update will be cancel.

**Software update takes approx. 30min. Do not power down while updating.**

6. When the update is completed, the message **“COMPLETE”** is displayed.  
7. When touching the **OK**, AW-RP150 will reboot automatically. After reboot, confirm the version number that is renewed according to procedure **“1-1”**.



If the update fails, please contact your dealer or service provider.