

AJ-PX5000G/AJ-PX2300MC Software (Firmware) update procedure

1. Version display method

Each software version can be confirmed at item "VERSION" in SYSTEM menu.

1. Press **THUMBNAIL** button to display the thumbnail screen.
2. Press **MENU** button for 3 seconds or more to display the MAIN MENU.
3. Select "**SYSTEM**" with **CURSOR** button ▼ and then press CURSOR button ►. The yellow cursor moves to SUB menu..
4. Select "**VERSION**" with cursor button and pressing the **SET** button, the firmware version and the registered information is displayed.
5. Pressing ◀ or ► cursor button, each software version is displayed.

```
VERSION      : 13.56-00-F.00
MODEL NAME   : AJ-PX5000G
SERIAL NO    : H3TAA0003
MAC ADDRESS  : 8C:C1:21:EF:D6:1E
UID          : 00804582 19282004
```

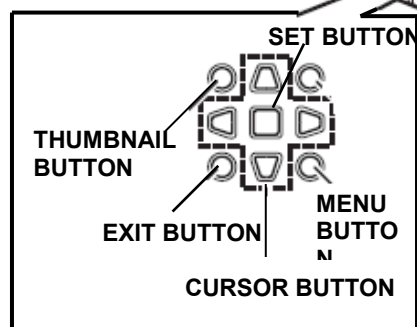
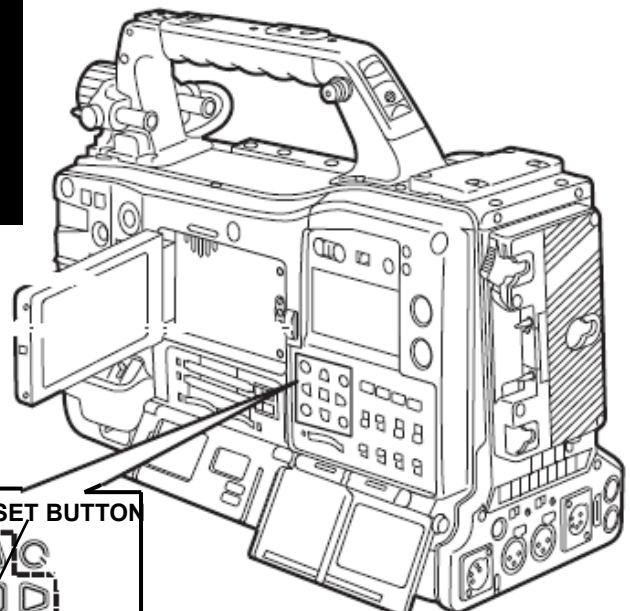
OK

```
P2CS KR      : 1.03-00-0.00
P2CS AP      : 1.01-00-0.00
VUP          : 1.03-00-0.00
VUP FS       : 1.01-00-0.00
SYSCAM       : 0.32-00-9.26
CODEC SOFT   : 1.01-00-0.00
PROXY SOFT   : 3.01-00-0.00
LCD SOFT     : 1.01-00-0.00
```

OK

```
AVIO FPGA    : 1.05-00-0.00
CAM FPGA     : 1.02-00-0.00
```

OK



2. Preparation

CAUTION: Before Updating Software

- **Do not power down or pull card while upgrading.** If the program quits during loading, the data will be erased or part writing condition and the restart is not made.

< Preparation for SD memory card >

1. One piece of SD memory cards (SD: 64MB to 2GB, SDHC: 4GB to 32GB memory card) is required. Use only SD memory cards that comply with the SD or SDHC specifications.
2. Insert an SD memory card into the card slot of this unit and format it.
Select main menu > [FILE] > [FORMAT SD CARD] and press the jog dial (or <SET> button).

NOTE: SD memory card used in this unit requires to be conformed to SD™ standards. Be sure to format SD memory card on this unit.

< Copy of Image data for update >

1. Download Image Data “**VSI*****.zip**” for the update from “**Service and Support**” web site.
<http://pro-av.panasonic.net/en/>
2. Copy the file “**VSI*****.zip**” to hard disk of your PC and extract the file.
3. Insert a formatted SD memory card into the card slot of PC.
4. Copy the folder “**PRIVATE**” to one piece of SD memory cards. The downloaded image data (upgrade file: **VSI*****.img**) is included in folder “**PRIVATE**”.

NOTE: Do not change the construction of folder and file name. The folder construction shown in the following and top of directory should be “**PRIVATE**”.

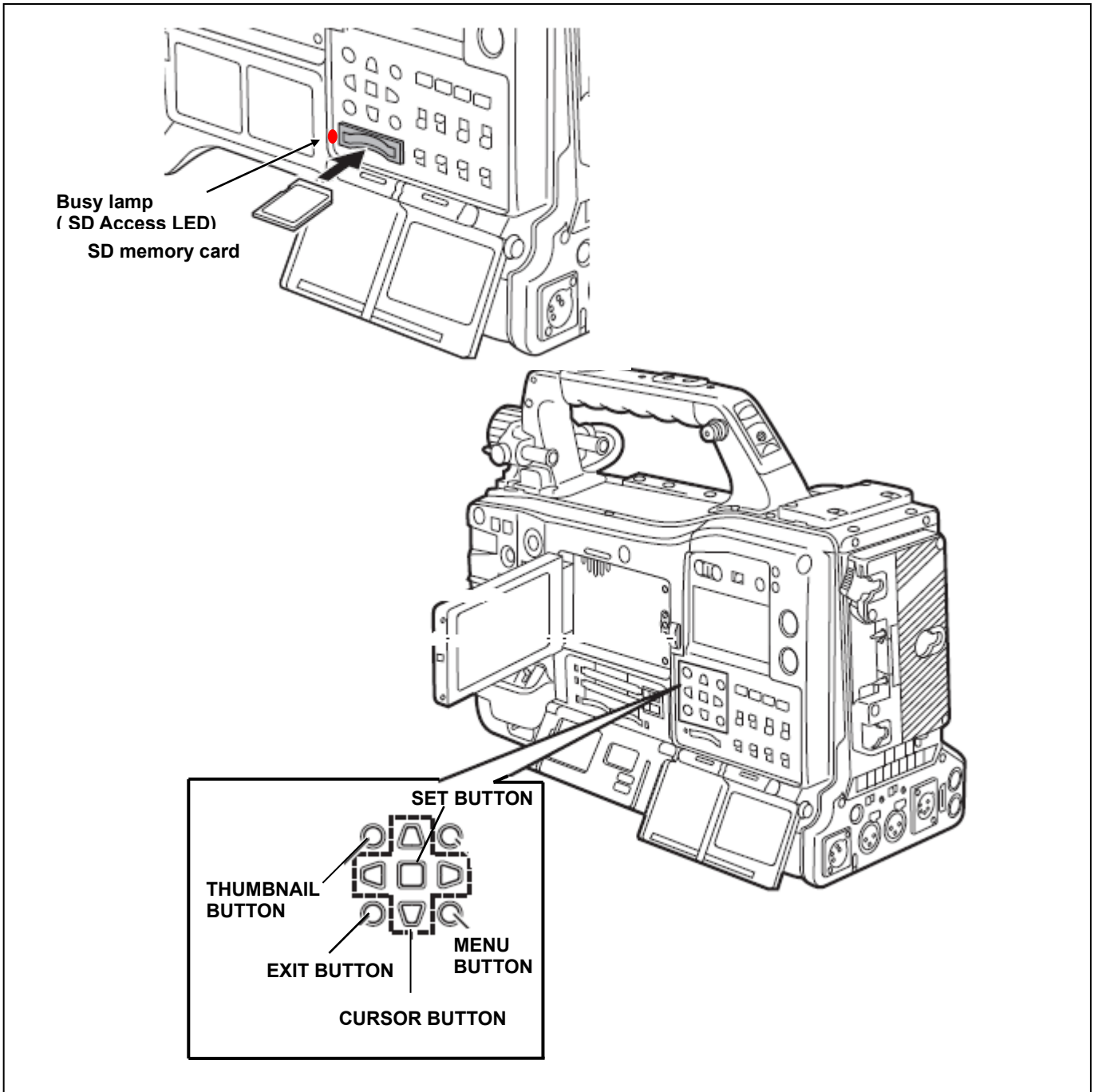
Folder: PRIVATE \ MEIGROUP \ PAVCN \ SBG \ P2SD \ FW \
File Name: VSI*****.img

< External Power >

It is best to power the unit from the external power supply. This will prevent the unit from shutting off during updating.

3. Updated procedure

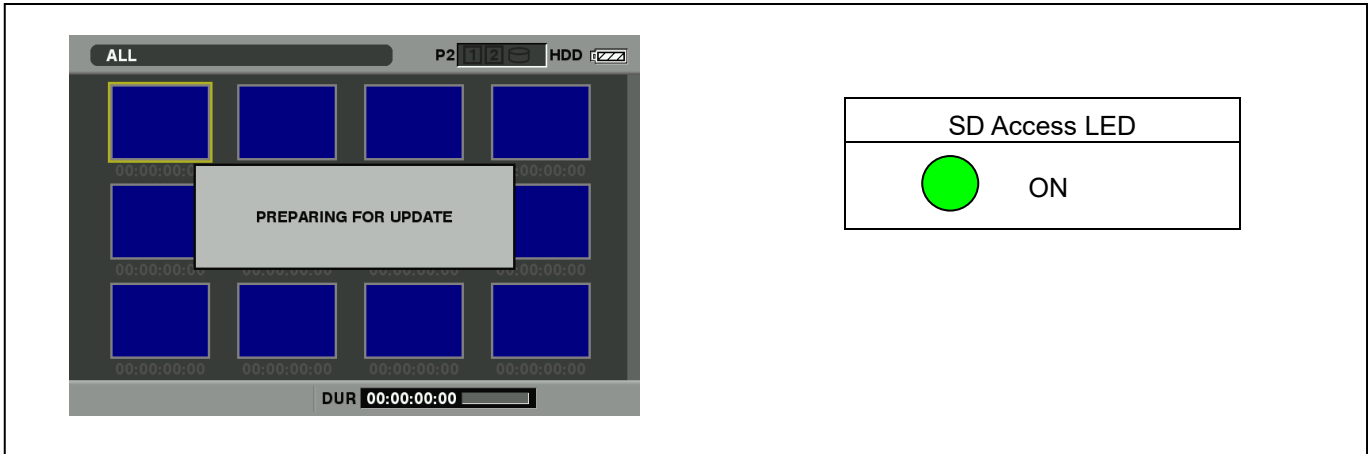
1. Turn the power on. Press the **THUMBNAIL** button to thumbnail display screen mode.
2. Insert the SD memory card for update into the SD card slot of this unit.
3. Press the **MENU** button for 3 seconds or more to display the Main menu on thumbnail screen.



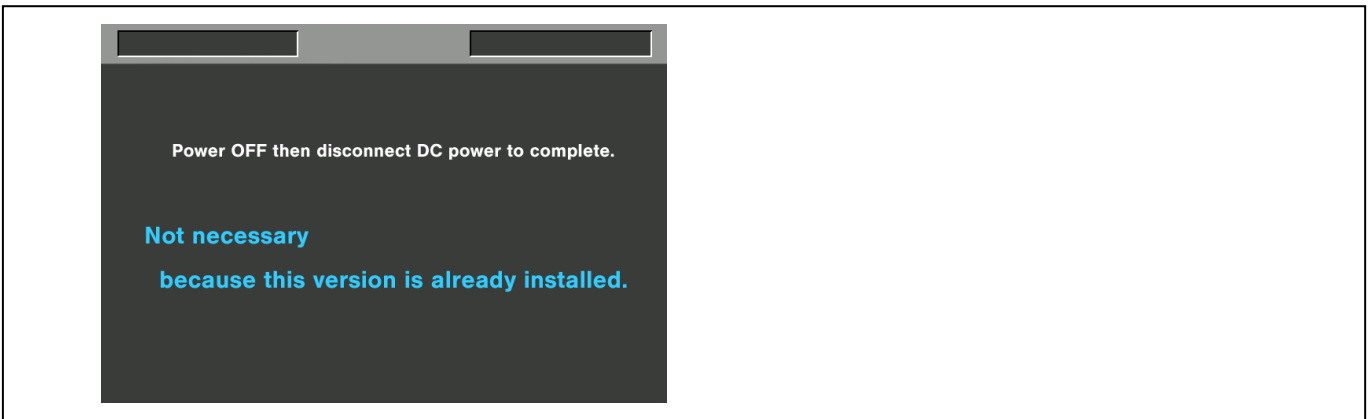
4. Select "**SYSTEM**" with **CURSOR** button ▼ and then press **CURSOR** button ►. The yellow cursor moves to SUB menu..
5. Select "**UPDATE**" with cursor button and pressing the **SET** button. (If the update SD memory card does not insert into the unit, item "**UPDATE**" does not appeared.). The confirmation menu of the execution is displayed. If update is executed, select the item "**YES**" and press **SET** button. In this time, **BUSY lamp (SD Access LED)** is turned off.
6. Update program is started and the message "**PREPARING FOR UPDATE**" appears on screen. In this timing, it

is doing preparation such as the confirmation of the data of the updating. In this time, **BUSY lamp (SD Access LED)** is turned on.

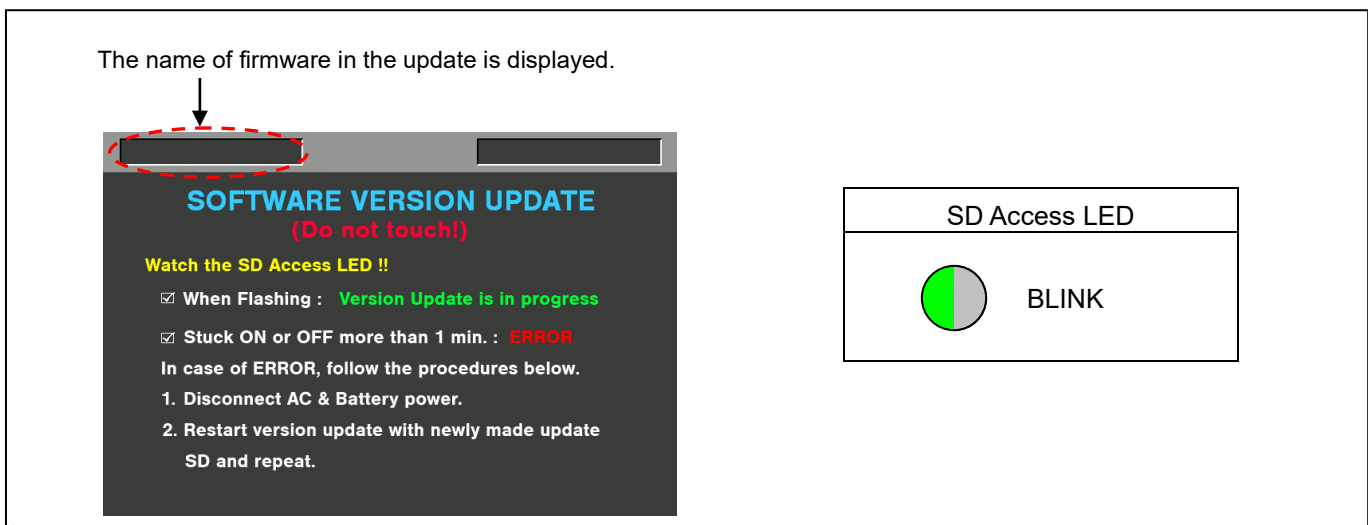
NOTE: To shift to the screen in step 7, it might be necessary for about 60 seconds (Shift time changes with capacity of an image file.).



NOTE: The following screen is displayed when there is data of the SD memory card in the same version. Please remove the SD memory card and turn the power to OFF (In case of lower version, writing is possible.).

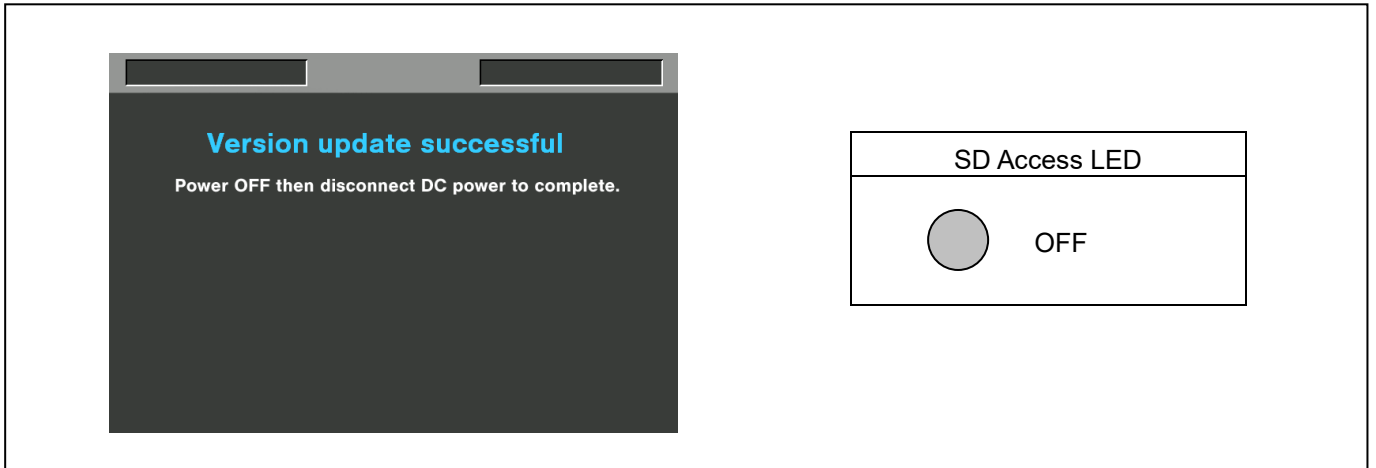


7. When shifting to the update process of the flash and microcomputer, following screen is displayed. During updating software, **BUSY lamp (SD Access LED)** is blink.

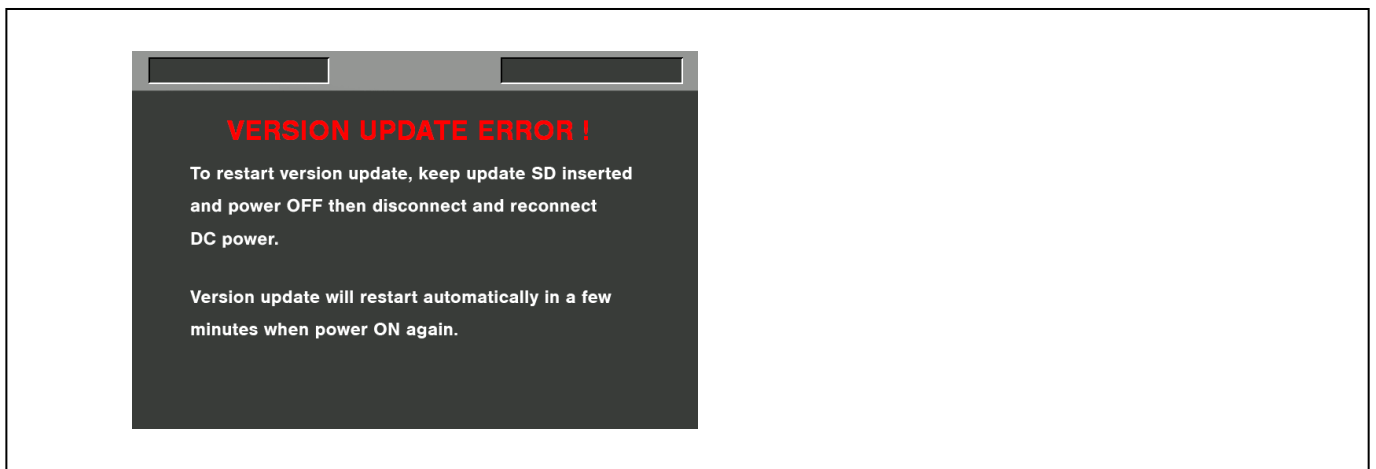


◆ In case that all firmware is updated, it takes approx. 45min (Time changes with capacity of an image file.).

8. In updating succeed, following screen is displayed. In this time, **BUSY lamp (SD Access LED)** is turned off.



NOTE: If the update is not successful, an error message will appear as follows.



◆ If the power supply is shut down on the way to update or above error operation happens, turn the power OFF/ON then restart the write function start again in a few minutes.

9. Remove the SD memory card and turn the power supply of AC Adaptor OFF. Then power OFF the camera recorder and power ON the power supply and camera recorder.

NOTE:

- Power OFF/ON by the power SW of camera recorder does not work just after updating the software. Please shut OFF the external power supply.
- The power OFF and ON of camera recorder is required for updating data renewal.

4. Confirm update

Please check the firmware version according to the item "1.Version display method".

If it is difficult to access the internet or to make the registration, please check the firmware version on the MENU. But it is strongly recommended to use "P2 Status Logger" for checking the update result to avoid a mistake.

Use "P2 Status Logger"

After you finish the update and power ON the unit, please use "P2 Status Logger" application software for making sure the software update is done correctly.

<P2 Status Logger > https://eww.pass.panasonic.co.jp/pro-av/support/cs/ap_dl/index_e.htm

You need to be a member of "P2 Asset Support System" to download the "P2 Status Logger" software.

If you haven't been a member of "P2 Asset Support System" yet, please go to the URL below and make a registration.
<P2 Asset Support System> http://panasonic.biz/sav/pass_e