

■ Firmware Update

This manual is to explain the procedure for updating the AJ-PCD35 firmware on Macintosh.

■ Operating Environment

Please perform this update for AJ-PCD35 in the following environment.

- OS X 10.7 Lion
- OS X 10.8 Mountain Lion
- OS X 10.9 Mavericks

■ Preparation Before Updating

Before updating the AJ-PCD35 firmware, please make sure of the following points.

- For updating AJ-PCD35, it is required that PCIe Driver1.10 or higher (for microP2 card) for AJ-PCD35 should be installed in your Mac.

Download the latest version of P2 Driver from the following website to update PCIe Driver for AJ-PCD35.

<http://pro-av.panasonic.net/en/> ->Service and Support ->Download -> Software

Driver Update Procedure

1. Connect AJ-PCD35 with your Mac. Then start your Mac.
 2. Double-click the file downloaded from the website to extract it. Then execute "P2Software Install.dmg" in the "P2Software" folder.
 3. This file is also extracted and the "P2Software Install.pkg" file appears. So double-click and execute it.
 4. Follow the instructions on the screen to perform the installation, and the update will be completed.
- Download AJ-PCD35 latest firmware update file "VSI5062E.zip" for Macintosh from the website below and put it in any folder in your Mac.)

<http://pro-av.panasonic.net/en/> ->Service and Support ->Download -> P2

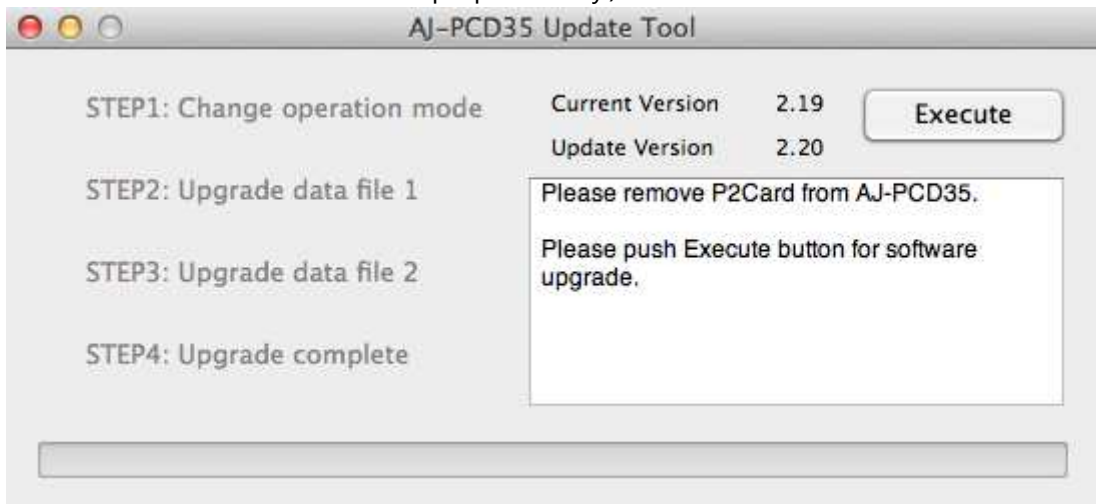
- If your Mac is connected with two or more AJ-PCD35 memory card drives, the update can not be performed correctly. Be sure to perform the update with only one AJ-PCD35 drive connected.
- Disable the sleep setting of your Mac.
- If P2 cards are in the slots of AJ-PCD35, take them all out.

■ Firmware Update Procedure

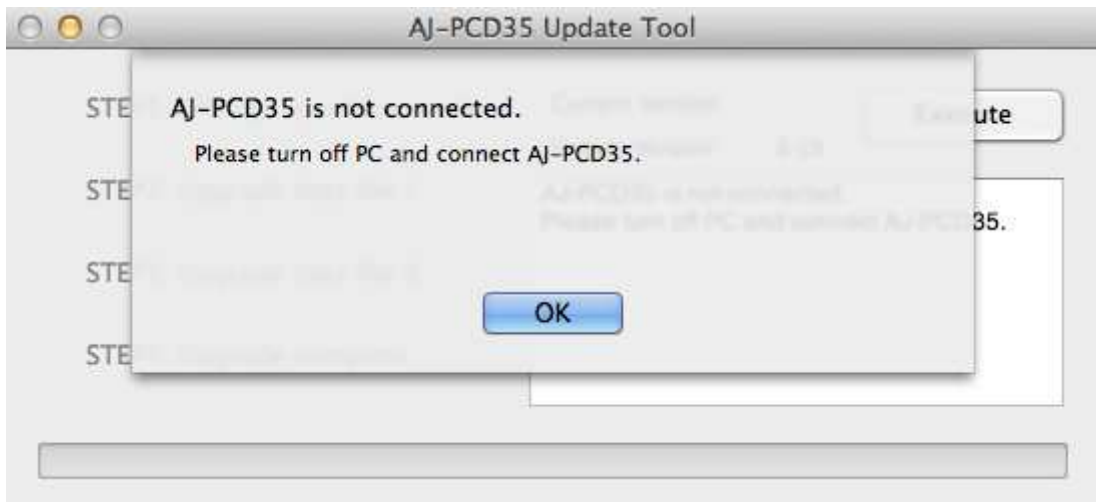
* Update must be performed by a user with administrator rights.

1. Double-click the downloaded "VSI5062E.zip" file to extract it and create the "VSI5062E" folder.
2. Double-click the "PCD35UpdateTo220.app" file in the "VSI5062E" folder to start the update.

When AJ-PCD35 is recognized correctly, following screen is displayed. Please proceed to the next step. (Version numbers below are for reference purposes only.)

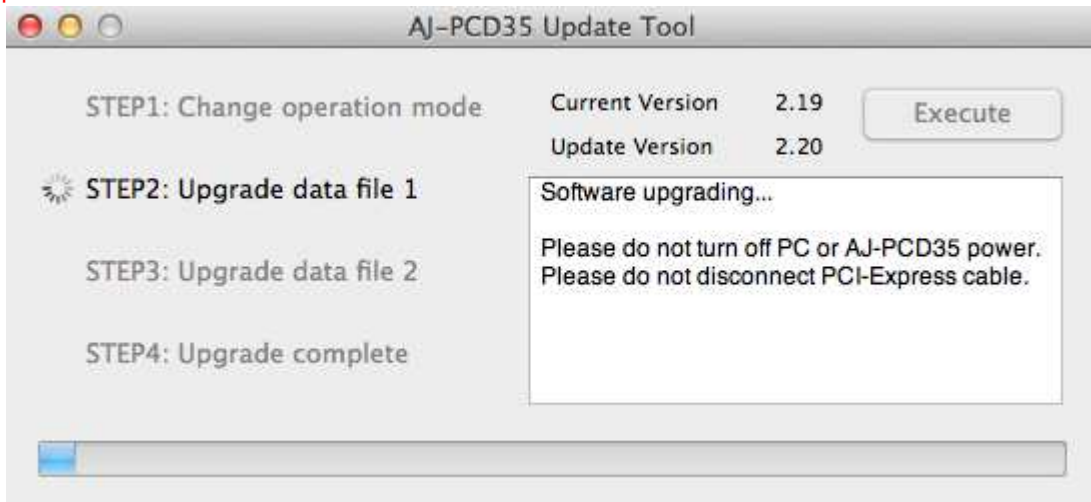


If the screen is displayed as follows, AJ-PCD35 is not recognized. Please check the connection with Mac again.

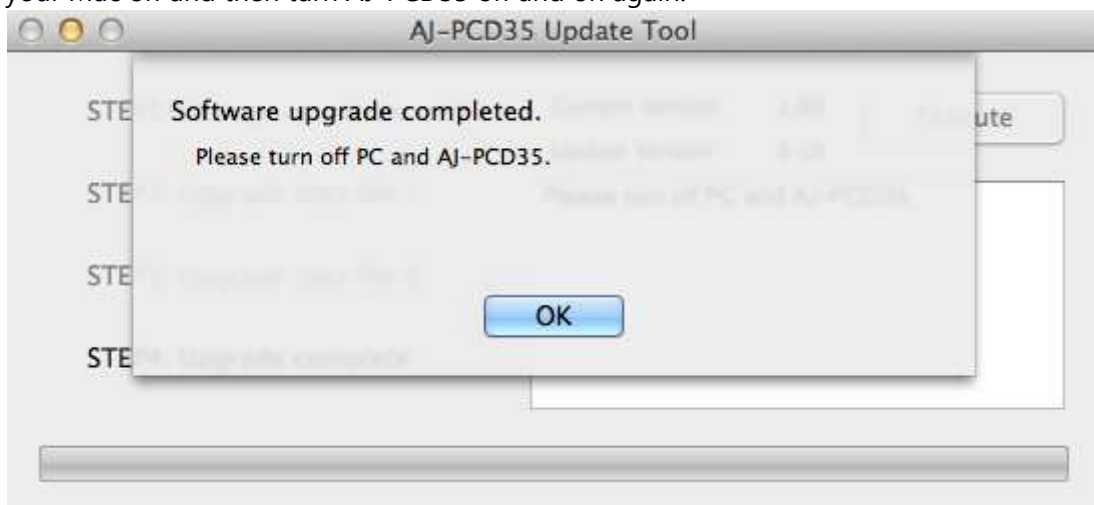


- Click the [Execute] button to start the update.
It takes about 5 minutes to complete the update.

* Once the update is started, it can not be canceled in the middle of the process.
* While the update is in progress, please do not turn off your Mac or AJ-PCD35, or unplug the PCI Express cable.



- When the update is completed, the following screen will be displayed as below.
Turn your Mac off and then turn AJ-PCD35 off and on again.

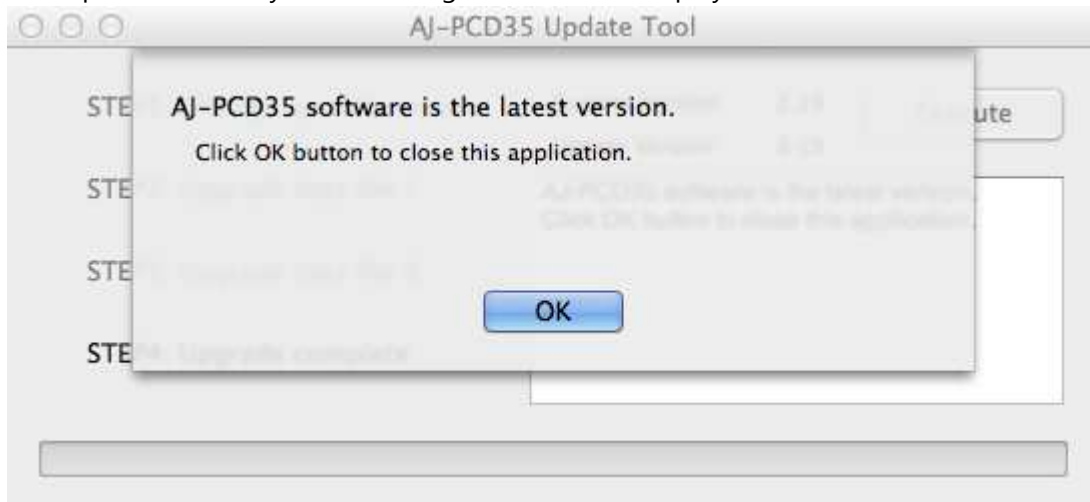


- Restart your Mac, and the new version of AJ-PCD35 will be operational.

■ Confirmation of Firmware Version

When you need to confirm that AJ-PCD35 has been correctly updated, please execute the "PCD35UpdateTo220.app" file again.

If it has been updated correctly, the following screen will be displayed.




If it has not been updated correctly, please perform the update from the beginning again.

■ Error While Updating

If an error occurs for some reason while updating, a message such as the following will be displayed in the window and the update process will be stopped.

- + Cannot communicate with AJ-PCD35. Ending process.
- + Error during version update, Ending process.
- + File transfer failed. Ending process.
- + File write failed. Ending process.

If the update is stopped, please follow the procedure below to perform the update again.

1. Press  button at the upper left of the window to terminate updating.
2. After turning your Mac off, turn AJ-PCD30 off and on again. Then restart your Mac.
3. Double-click the "PCD35UpdateTo220.app" file to start the application.
4. After it is confirmed that AJ-PCD35 is recognized, press the Execute button to perform the update.

"This software can't be opened because it is from an unidentified developer."

When a warning window appears, click the [OK] button.

Again, click the software icon while holding down the "Ctrl" key, and select [Open] on the menu which is displayed.

"This software is from an unidentified developer. Are you sure you want to open it?"

A confirmation window appears so click the [Open] button.

When the following symptoms occur, please contact your nearest service center.

- AJ-PCD35 is not recognized.
- The update is not completed correctly even if you have retried several times.