

■ Firmware Update

This manual is to explain the procedure for updating the AJ-PCD35 firmware on Windows.

■ Operating Environment

Please perform this update for AJ-PCD35 in the following environment.

OS :

Windows 7 Professional, Ultimate (SP1) 32bit/64bit

Windows 8 32bit/64bit

Windows 8.1 32bit/64bit

■ Preparation Before Updating

Before updating the AJ-PCD35 firmware, please make sure of the following points.

<PCIe Driver download and installation>

- For updating AJ-PCD35, it is required that the latest version (for microP2: ver1.4.2 or higher) of PCIe Driver for AJ-PCD35 should be installed in your PC first.

Download the latest version of P2 Driver including PCIe Driver from the following website to update PCIe Driver for AJ-PCD35.

<http://pro-av.panasonic.net/en/> ->Service and Support ->Download -> Software

Driver Update Procedure

1. Connect AJ-PCD35 with your PC. Then start your PC.
2. Double-click the file downloaded from the website to extract it. "Setup.exe" file is in it, so save this file to an appropriate location.
3. Execute the "Setup.exe" file, and a message will be displayed asking if you want to continue the update. Then select "Yes".
4. Follow the instructions on the screen to proceed with the installation, and a screen will be displayed to select the device to be installed.
Put a check mark on the "AJ-PCD35(P2 Drive) PCIe Driver" item and click "OK".
5. A screen is displayed stating "Connect AJ-PCD35 using PCIe", so click "Install".
6. If the confirmation screen for installation is displayed, click "Continue".
7. When the finish screen is displayed, click "Finish".

<Firmware Download>

- Download AJ-PCD35 latest firmware update file "VSI5061D.zip" for Windows from the website below and put it in any folder in your PC.

<http://pro-av.panasonic.net/en/> ->Service and Support ->Download -> P2

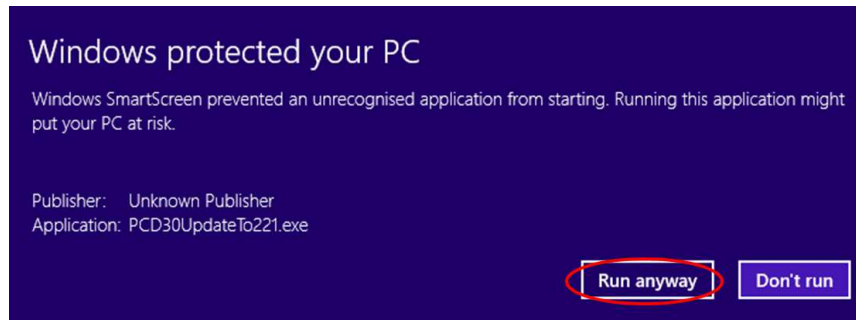
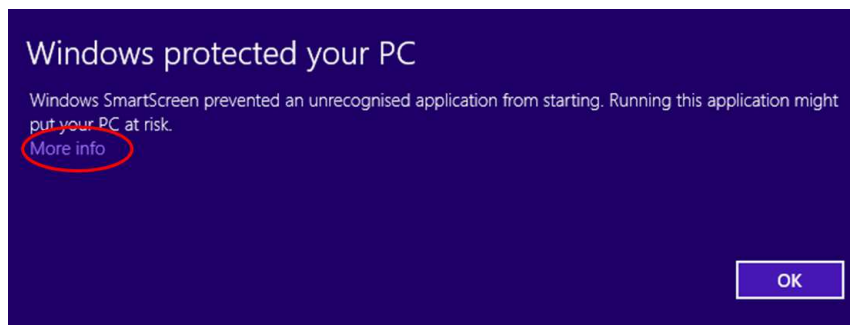
- If your PC is connected with two or more AJ-PCD35 memory card drives, the update can not be performed correctly. Be sure to perform the update with only one AJ-PCD35 drive connected.
- Disable the standby / hibernate setting of your PC.
- If P2 cards are in the slots of AJ-PCD35, take them all out.

■ Firmware Update Procedure

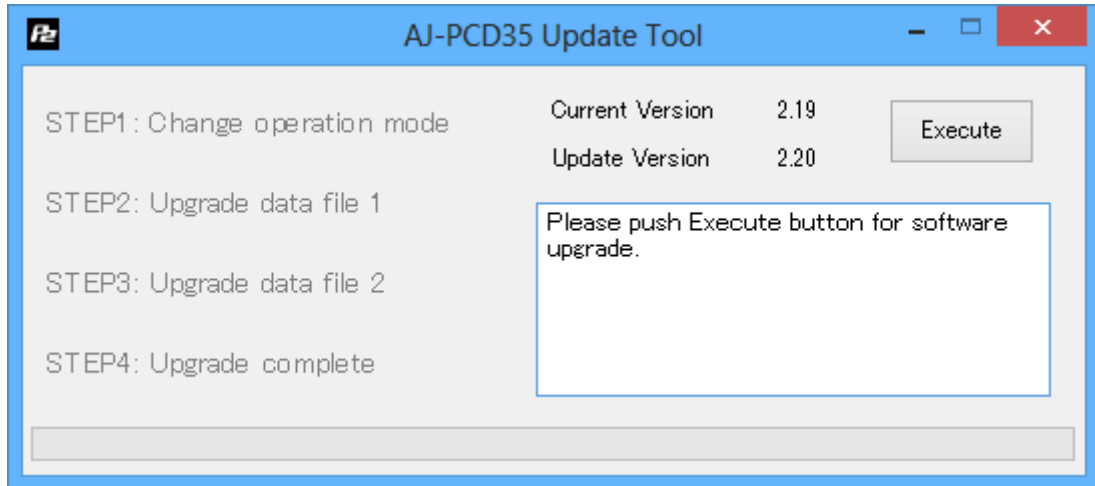
* Update must be performed by a user with administrator rights.

1. Double-click the downloaded "VSI5061D.zip" file to extract it, and the "VSI5061D" folder will appear. So copy this folder to an appropriate location.
2. Double-click the "PCD35UpdateTo220.exe" file in the "VSI5061D" folder to start the update. On Windows 7 and Windows 8, the confirmation dialog for access request will be displayed. So click [OK] to proceed.

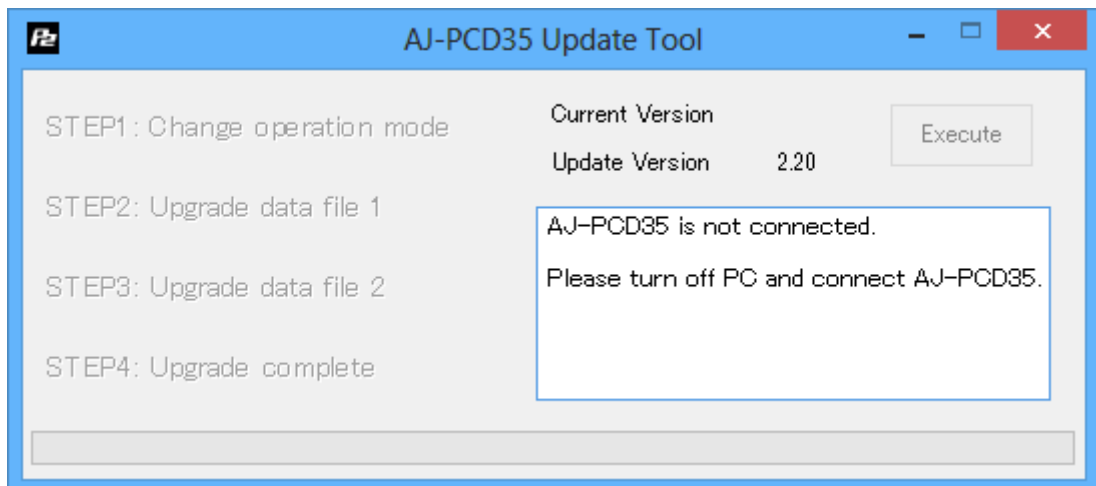
If the message "Windows protected your PC" appears in Windows 8/8.1, click "More info" and select "Run anyway" on next page.



When AJ-PCD35 is recognized correctly, following screen is displayed. Please proceed to the next step.
(Version numbers below are for reference purposes only.)



If the screen is displayed as follows, AJ-PCD35 is not recognized. Please check the connection with PC again.

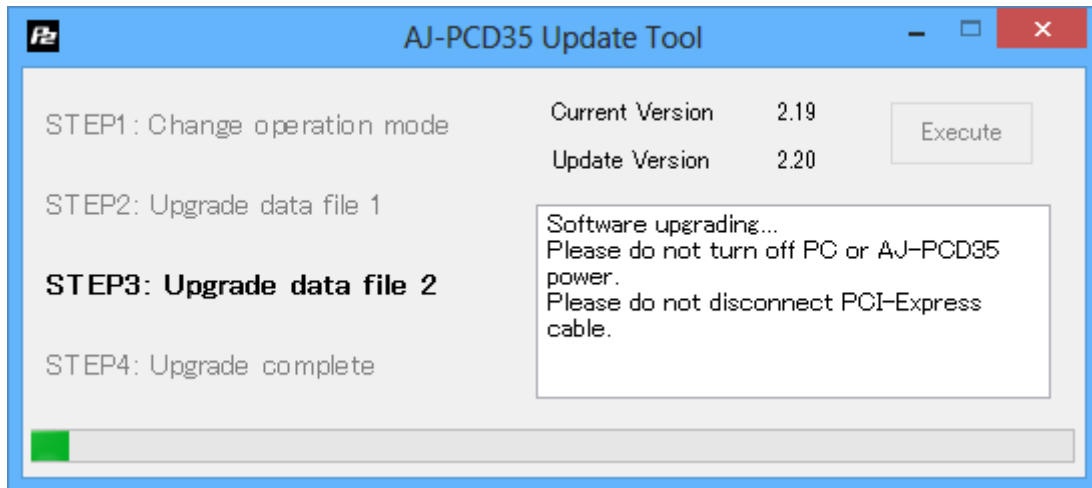


3. Click the [Execute] button to start the update.

It takes about 5 minutes to complete the update.

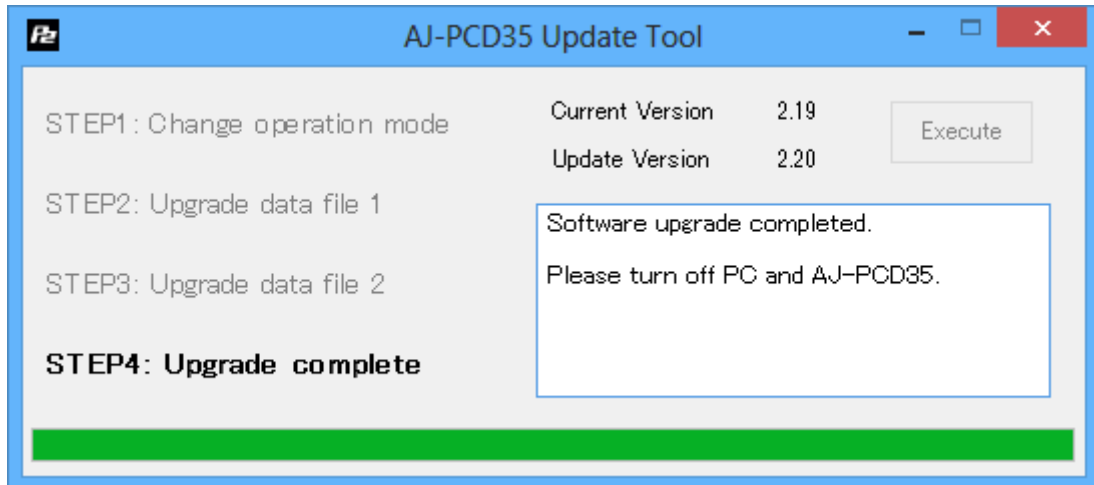
* Once the update is started, it can not be canceled in the middle of the process.

* While the update is in progress, please do not turn off your PC or AJ-PCD35, or unplug the PCI Express cable.



4. When the update is completed, the following screen will be displayed as below..

Turn your PC off and then turn AJ-PCD35 off and on again.



5. Restart your PC.

After the restart, "New Hardware Search Wizard" may be displayed.

In that case, follow the procedure below to make AJ-PCD35 recognized again.

- If a message is displayed asking "Do you want to connect to Windows Update?", select "No, I will not connect this time" and click "Next".
- Confirm that the device name is "Panasonic AJ-PCD35". Then select "Install the software automatically" and click "Next".
- If the confirmation screen for installation is displayed, click "Continue".
- When the finish screen is displayed, click "Finish".

After the restart, without displaying "New Hardware Search Wizard", the re-installation of P2 Driver may start automatically.

In that case, please do not use the P2 card until the driver installation is completed.

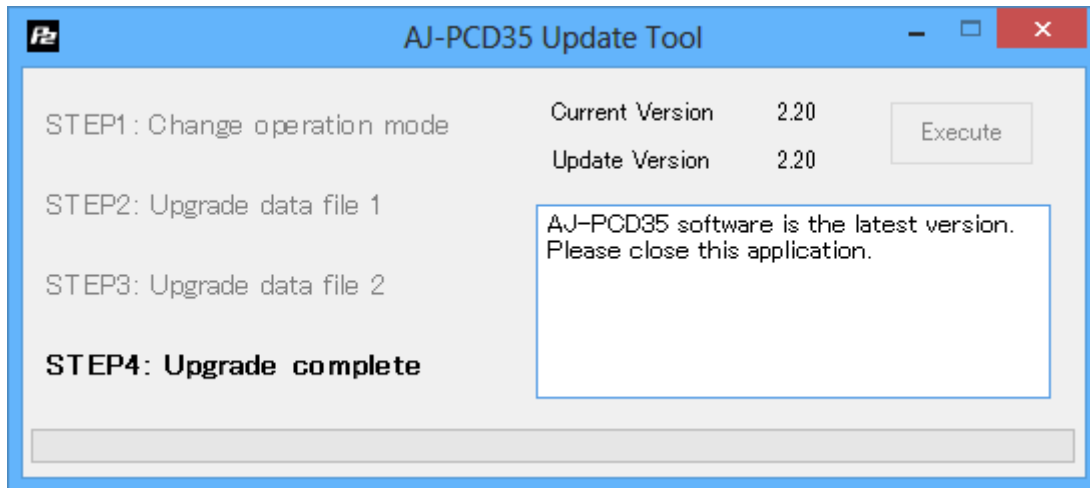
After the installation is completed, if a message is displayed telling you to restart your PC, please restart your PC.

With these steps, the update will be completed.

■ Confirmation of Firmware Version

When you need to confirm that AJ-PCD35 has been correctly updated, please execute the "PCD35UpdateTo220.exe" file again.

If it has been updated correctly, the following screen will be displayed.




If it has not been updated correctly, please perform the update from the beginning again.

■ Error While Updating

If an error occurs for some reason while updating, a message such as the following will be displayed in the window and the update process will be stopped.

- + Cannot communicate with AJ-PCD35. Ending process.
- + Error during version update, Ending process.
- + File transfer failed. Ending process.
- + File write failed. Ending process.

If the update is stopped, please follow the procedure below to perform the update again.

1. Press  button at the upper right of the window to terminate updating.
2. After turning your PC off, turn AJ-PCD35 off and on again. Then restart your PC.
3. Double-click the "PCD35UpdateTo220.exe" file to start the application.
4. After it is confirmed that AJ-PCD35 is recognized, press the Execute button to perform the update.

When the following symptoms occur, please contact your nearest service center.

- AJ-PCD35 is not recognized.
- The update is not completed correctly even if you have retried several times.