

■ Firmware Update

This manual is to explain the procedure for updating the AJ-PCD20 firmware on Windows.

Note: This firmware update is only possible via Windows PC.

■ Operating Environment

Please perform this update for AJ-PCD20 in the following environment.

OS	:	Windows XP Professional (SP3) 32bit Windows 7 Professional, Ultimate (SP1) 32bit/64bit Windows 8 32bit/64bit
Interface	:	USB2.0 (IEEE1394 is not recommended.)

■ Preparation Before Updating

Before updating the AJ-PCD20 firmware, please make sure of the following points.

- Download AJ-PCD20 latest firmware update file “vsi4788*.zip” for Windows from the website below and put it in any folder in your PC. (“*” is for a letter or a set of numbers that represents the version.)

<http://pro-av.panasonic.net/en/> ->Service and Support ->Download -> P2

- If your PC is connected with two or more AJ-PCD20 memory card drives, the update can not be performed correctly. Be sure to perform the update with only one AJ-PCD20 drive connected.
- Disable the standby / hibernate setting of your PC.
- If P2 cards are in the slots of AJ-PCD20, take them all out.

■ Firmware Update Procedure

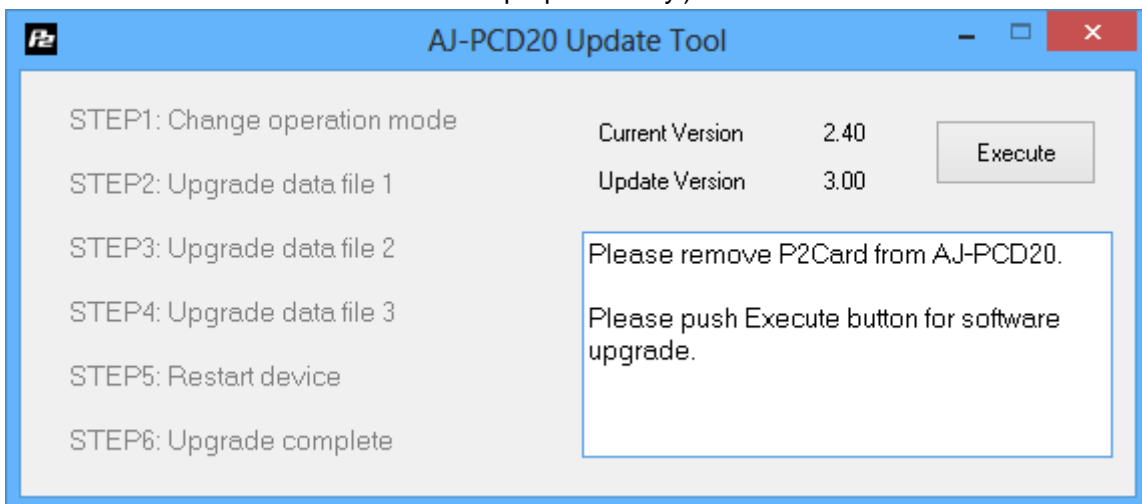
* Update must be performed by a user with administrator rights.

- 1 . Double-click the downloaded “vsi4788*.zip” file to extract it, and the “vsi4788*” folder will appear. So copy this folder to an appropriate location. (“*” is for a letter or a set of numbers that represents the version.)
- 2 . Double-click the “PCD20UpdateTo***.exe” file in the “vsi4788*” folder to start the update.
On Windows 7 and Windows 8, the confirmation dialog for access request will be displayed. So click [OK] to proceed.

When AJ-PCD20 is recognized correctly, following screen is displayed.

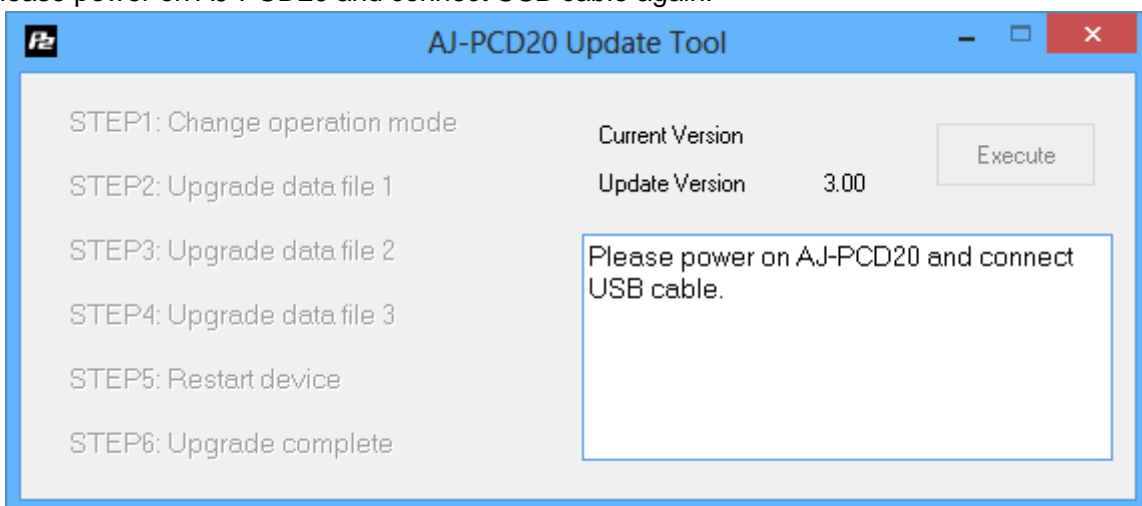
Please proceed to the next step.

(Version numbers below are for reference purposes only.)



If the screen is displayed as follows, AJ-PCD20 is not recognized.

Please power on AJ-PCD20 and connect USB cable again.



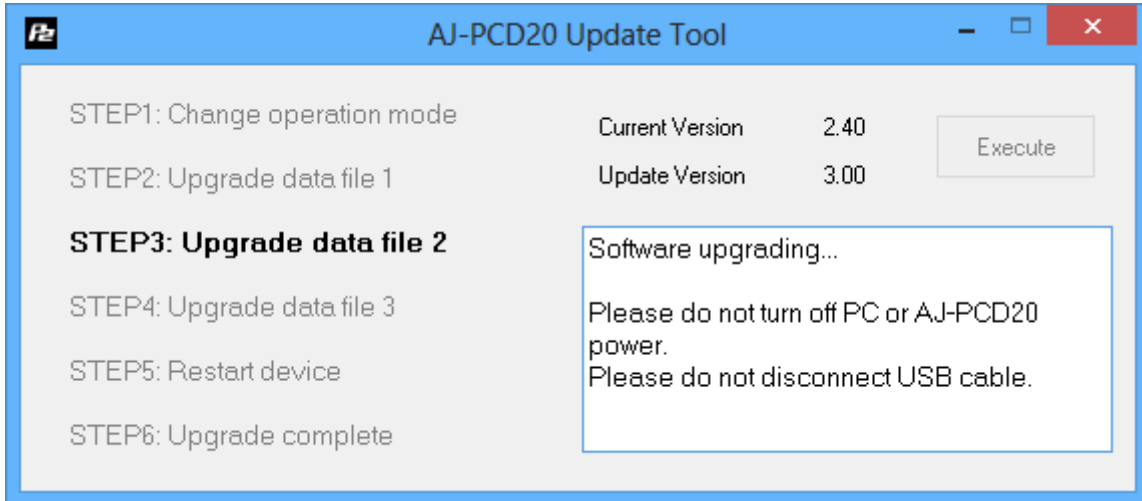
3 . Click the [Execute] button to start the update.

It takes about 5 minutes to complete the update.

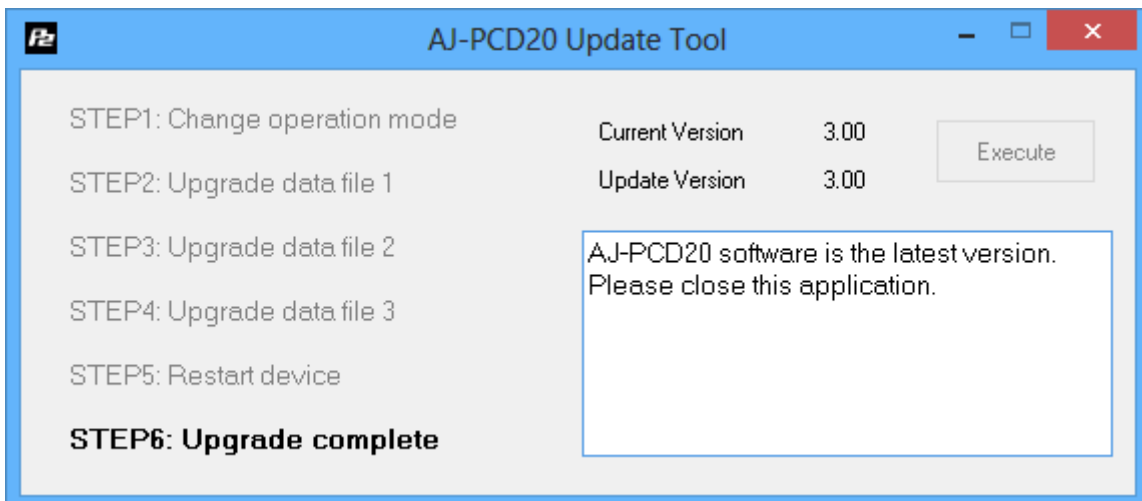
* Once the update is started, it can not be canceled in the middle of the process.

* While the update is in progress, please do not turn off your PC or AJ-PCD20, or unplug the USB cable.

* While the update is in progress, AJ-PCD20 is temporarily in the state of being disconnected. But this is a normal operation for update.



4 . When the update is completed, AJ-PCD20 will restart automatically and the following screen will be displayed as below.

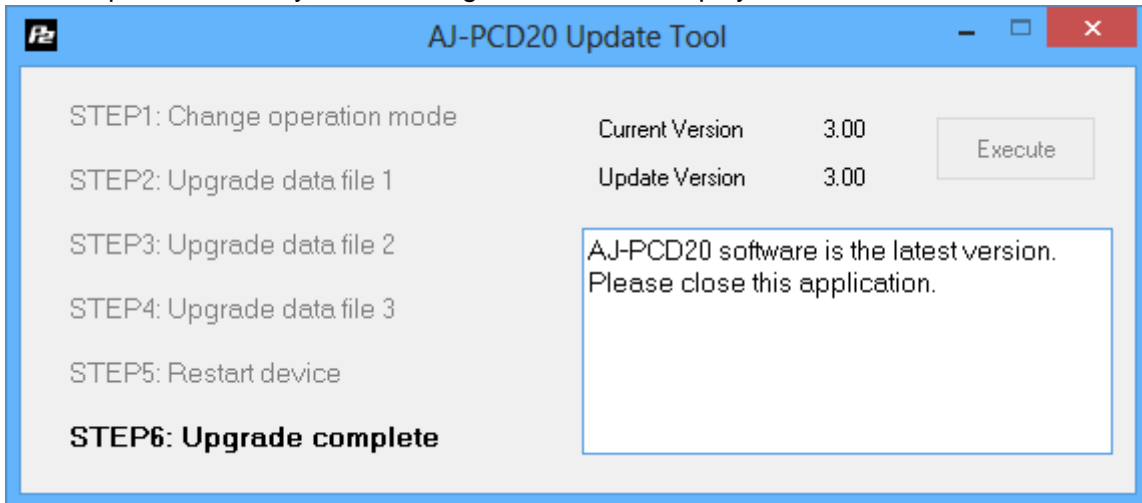


5 . Make sure update is completed.

■ Confirmation of Firmware Version

When you need to confirm that AJ-PCD20 has been correctly updated, please execute the “PCD20UpdateTo***.exe” file again.

If it has been updated correctly, the following screen will be displayed.




If it has not been updated correctly, please perform the update from the beginning again.

■ Error While Updating

If an error occurs for some reason while updating, a message such as the following will be displayed in the window and the update process will be stopped.

- + Cannot communicate with AJ-PCD20. Ending process.
- + Error during version update, Ending process.
- + File transfer failed. Ending process.
- + File write failed. Ending process.

If the update is stopped, please follow the procedure below to perform the update again.

- 1 . Press  button at the upper right of the window to terminate updating.
- 2 . After turning your PC off, turn AJ-PCD20 off and on again. Then restart your PC.
- 3 . Double-click the “PCD20UpdateTo***.exe” file to start the application.
- 4 . After it is confirmed that AJ-PCD20 is recognized, press the Execute button to perform the update.

When the following symptoms occur, please contact your nearest service center.

- AJ-PCD20 is not recognized.
- The update is not completed correctly even if you have retried several times.