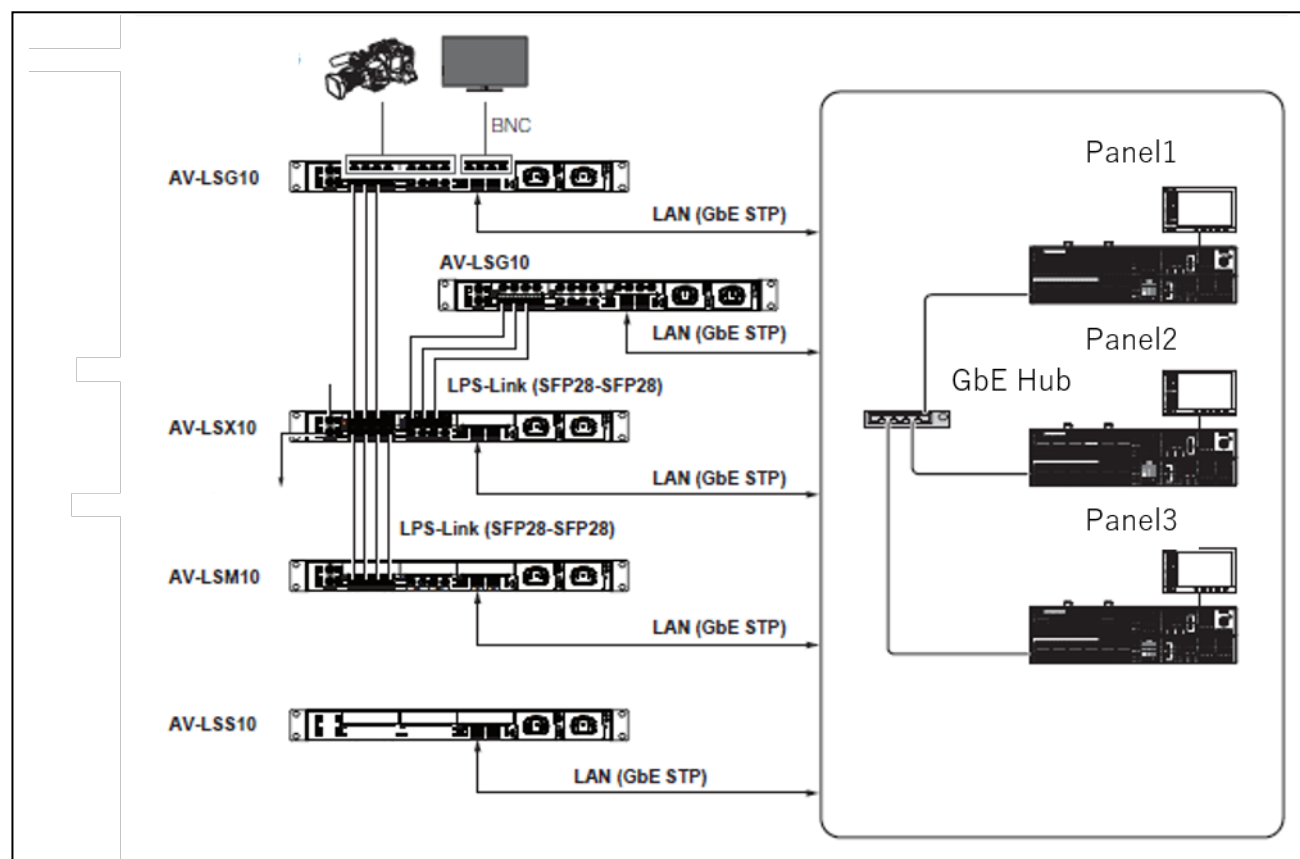


AV-LSS10 Live Production Suite

Software update procedure

System configuration example



Use **<LAN1>** for LAN connection. (<LAN2> is not used)

<Each role>

- AV-LSG10: Gateway of SDI IN/OUT (12G SDI-IN×10, 12G SDI-OUT×6)
- AV-LSM10: ME (2ME)
- AV-LSX10: Cross point
- AV-LSS10: System manager
 - Firmware data, Project file and Setting data
- Panel: AV-HS6000 series (Menu Panel: AV-HS60C3, Control Panel: AV-HS60C4)

Version display (1)

Version information about software and firmware can be confirmed using Menu Panel (AV-HS60C3).

1. Press **<SYS>** button on the left side of Menu Panel so that SYSTEM menu will be displayed.
2. **[MAINTENANCE]** → select **[Status]** tab.
 - Information about the system version is displayed at System Version item.
3. Version information about each software program can be displayed using the scroll bar at the right side of the screen.

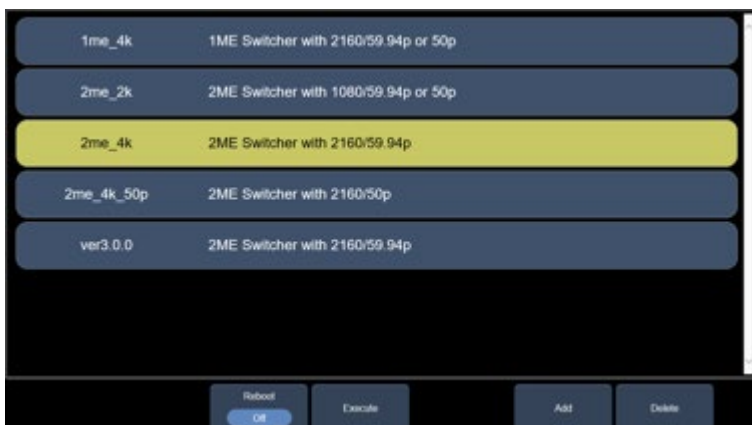
Version display (2)

You can use the Web browser of a PC connected to the system via the network.

Initial IP address **"192.168.0.100:4000"**

You can see the list of firmware on the storage

- The firmware name (file name) and the description of the setting file are displayed.
- You can select the firmware to delete or boot.



Update procedure

1. Download the firmware file "VSI*****.zip" for the update from the Support web site.

And extract the file on your PC.

https://panasonic.biz/cns/sav/pass_e

There are two types of unzipped firmware, 4K/2K.

2ME_4K_***.upd: Firmware for 4K systems ('***' is depends on the version)

2ME_2K_***.upd: Firmware for 2K systems ('***' is depends on the version)

2. Check that the PC and AV-LSS10* are connected via a network.

Setting example <PC> IP address: 192.168.0.10

Subnet: 255.255.255.0

The default IP address of AV-LSS10* is "**192.168.0.100**"

(You can set the User name and the password by control panel.

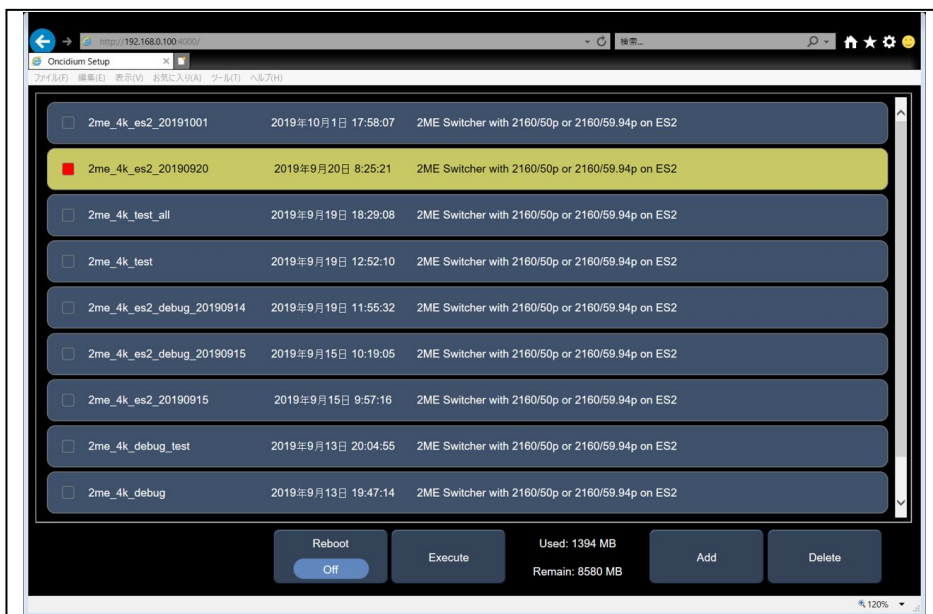
<SYS> -> [SYSTEM]->[Network] tab ->[PC Access])

3. Launch the Web browser ("Internet explorer") and enter as below.



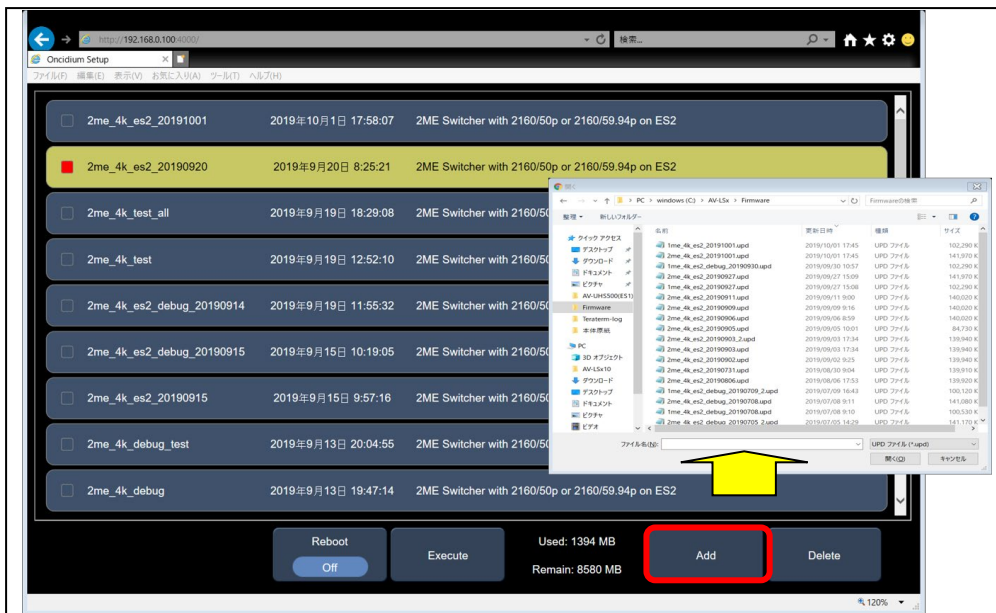
"192.168.0.100:4000"

Display example



4. Press the "Add" button and the following window will appear.

Select the firmware file and add it to the storage. There are two types of unzipped firmware, 4K/2K. Please register two files.

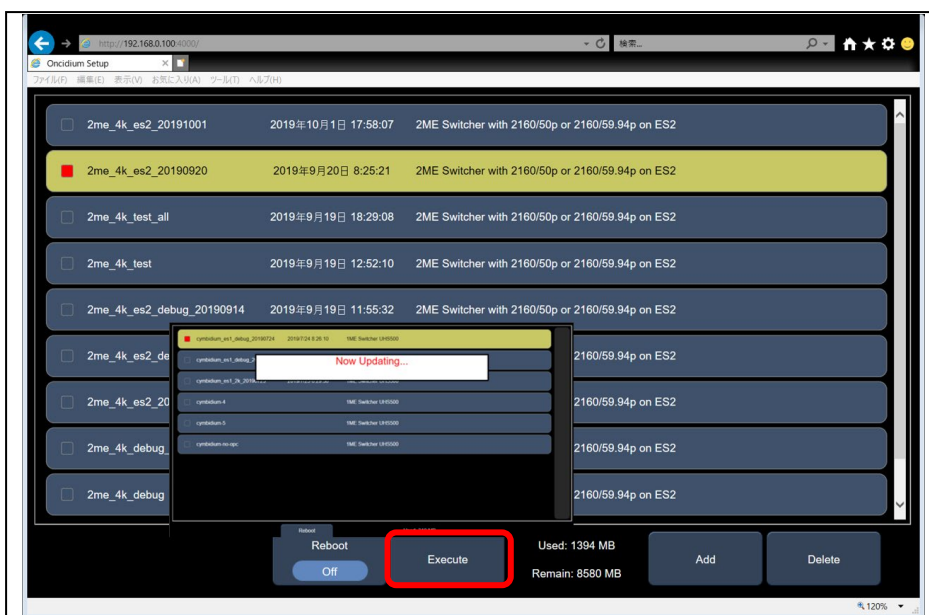


Confirm the dialog that means the addition is complete.

5. Please select the firmware to install. (The display turns yellow)

Press the "Execute" button and wait for it to complete.

Select each of the 4K/2K firmware registered in step 4 and press the "Execute" button.



6. Confirm the dialog that the installation is complete. Restart the system.

After rebooting, please change the system format according to your system.

7. Make sure the version is updated correctly.

Message

Operation	Message	Action
Addition	This firmware has already been registered, do you really want to add this?	OK or Cancel
	This firmware cannot be added. Because the firmware exceeds 100	Delete unnecessary firmware files.
	Not Finish Firmware cannot be added due to insufficient space	Delete unnecessary firmware files.
Delete	This firmware cannot be deleted. Because there is only one firmware	Add another firmware to the storage. Change the boot setting to the added one.
	Do you really want to delete this?	OK or Cancel
	This firmware cannot be deleted. Because it is currently set	Change the boot setting to another firmware.
Others	Error occurred	Check the network connection such as the network cable.

How to remove the firmware from storage

1. Select the firmware you want to remove from the list in the web browser.
2. Press the "Delete" button.
3. A dialog confirming the deletion is displayed. Select "OK" to remove the firmware.

