

AW-HR140 Firmware Update Procedure

Please be sure to read this first.

The update of AW-HR140 camera is performed via a network from Web setting screen on PC.

There might be accidents in the process of updating such as changing the camera settings and others by mistake. Please perform the update after taking every situation into careful consideration.

It is recommended that the current settings should be noted down in advance.

◆[Disclaimer of warranty]

IN NO EVENT SHALL Panasonic Corporation BE LIABLE TO ANY PARTY OR ANY PERSON, EXCEPT FOR REPLACEMENT OR REASONABLE MAINTENANCE OF THE PRODUCT, FOR THE CASES, INCLUDING BUT NOT LIMITED TO BELOW.

- (1) ANY DAMAGE AND LOSS, INCLUDING WITHOUT LIMITATION, DIRECT OR INDIRECT, SPECIAL, CONSEQUENTIAL OR EXEMPLARY, ARISING OUT OF OR RELATING TO THE PRODUCT.
- (2) PERSONAL INJURY OR ANY DAMAGE CAUSED BY INAPPROPRIATE USE OR NEGLIGENT OPERATION OF THE USER.
- (3) UNAUTHORIZED DISASSEMBLE, REPAIR OR MODIFICATION OF THE PRODUCT BY THE USER.
- (4) INCONVENIENCE OR ANY LOSS ARISING WHEN IMAGES ARE NOT DISPLAYED, DUE TO ANY REASON OR CAUSE INCLUDING ANY FAILURE OR PROBLEM OF THE PRODUCT.
- (5) ANY PROBLEM, CONSEQUENTIAL INCONVENIENCE, OR LOSS OR DAMAGE, ARISING OUT OF THE SYSTEM COMBINED BY THE DEVICES OF THIRD PARTY.
- (6) ANY INCONVENIENCE, DAMAGES OR LOSSES RESULTING FROM ACCIDENTS CAUSED BY AN INADEQUATE INSTALLATION METHOD OR ANY FACTORS OTHER THAN A DEFECT IN THE PRODUCT ITSELF.
- (7) LOSS OF REGISTERED DATA CAUSED BY ANY FAILURE.
- (8) ANY DAMAGE OR CLAIMS DUE TO LOSS OR LEAKAGE OF IMAGE DATA OR SETTING DATA SAVED ON THIS UNIT OR ON A MEMORY CARD OR COMPUTER.

◆[Network security]

As connected to a network, your attention is called to the following security risks.

- (1) Leakage or disclosure of information transmitted via this unit
- (2) Unauthorized use of this unit by a third person with malicious intent
- (3) Interference or stoppage of this unit by a third person with malicious intent

It is your responsibility to take sufficient network security measures such as those described below to protect yourself against the above risks.

+ Use this unit in a network secured by a firewall, etc.

+ If this unit is used in a system with a computer connected, make sure that checks for and removal of computer viruses and malicious programs are implemented regularly.

+ Do not install the unit in a location where the unit, cables, and other parts may be easily damaged.

Introduction (Integrated Camera Update Tool)

- This tool is the software for updating firmware of Integrated Cameras (HE** Series).
- If this software is installed into PC and then the camera that needs updating is connected via network with this PC, the camera can be updated simply by loading the update files.
- This software is available for Windows and Mac.

Preparation For Updating

○ Supported OS

Microsoft Windows7
 Microsoft Windows8
 Microsoft Windows8.1
 Microsoft Windows10
 Mac OS X 10.7
 Mac OS X 10.8
 Mac OS X 10.9
 Mac OS X 10.10
 Mac OS X 10.11

○ Applicable Cameras

AW-HE50 (AW-HEF5)
 AW-HE55
 AW-HE60
 AW-HE120
 AW-HE130
 AW-HR140

○ Preparing the devices

- Remote camera unit
- PC that can be connected with remote cameras via local area network
- LAN cables and a switching hub for making local area connection
- PC that can be connected to Internet

Install the Integrated Camera Update Tool

Please download this tool from the website.

This tool needs to be installed into PC before updating.

- **For Windows** **Execute "setup.exe" file to install Integrated Camera Update Tool into PC.**
- **For Mac** **Execute the application software.**

[Note]

When a new version of this tool is released, please be sure to uninstall the old version before installing the new one. If the old version is still installed, the new one cannot be installed.

Preparing the update file

1. Download the file for the update from "Support " web site.
 Click next to "Service and Support" tab. <https://pro-av.panasonic.net/en/>
2. Copy the file "*****.zip" to hard disk of your PC and extract the file.

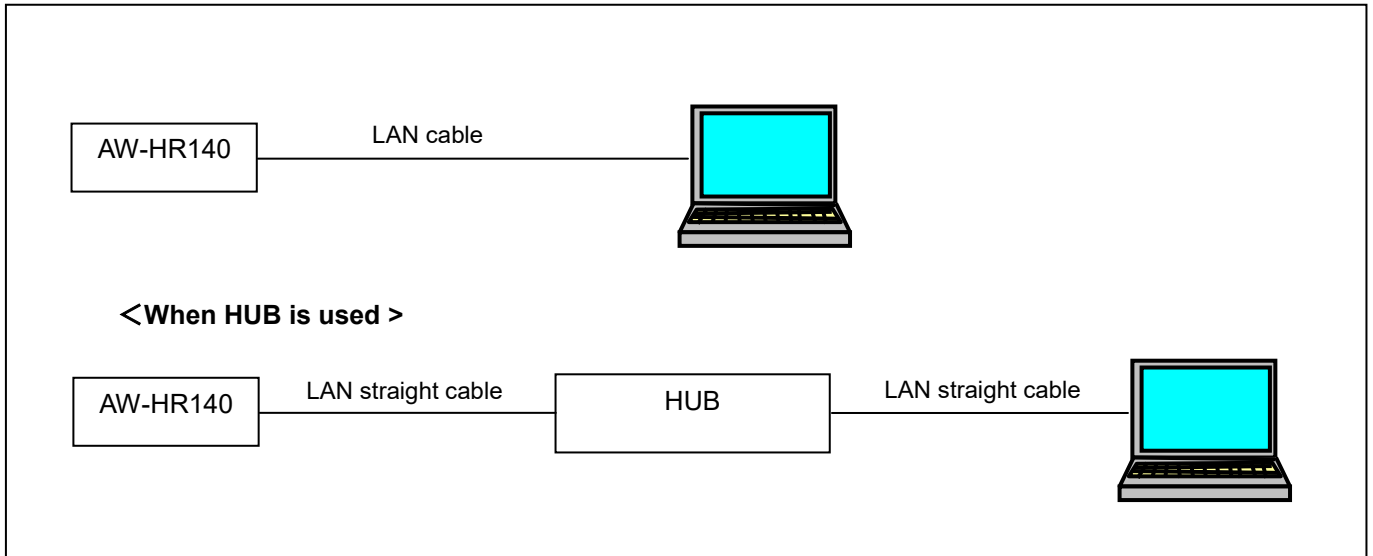
[Note]

Spaces and double-byte characters cannot be used for save directory.
 Please do not change unzipped folder's name and files inside it.

Connection

When updating is performed using this tool, local area connection is required. Please refer to Operating Instructions of each model to find out about how to connect the devices via local area network.

< Connection AW-HR140 to PC >



The LAN straight cable is used when making the connection through a switching hub.

Select an IP address for the personal computer within the private address range while ensuring that it is different from the address of the unit. Set the subnet mask to the same address as the unit.

Example

AW-HR140	192.168.0.10
PC	192.168.0.100

Unit's IP address and subnet mask (factory settings)

IP address : 192.168.0.10
Subnet mask : 255.255.255.0
Range of private addresses: 192.168.0.1 to 192.168.0.254

[Note]

When this tool is used, please do not start up other web browsers.

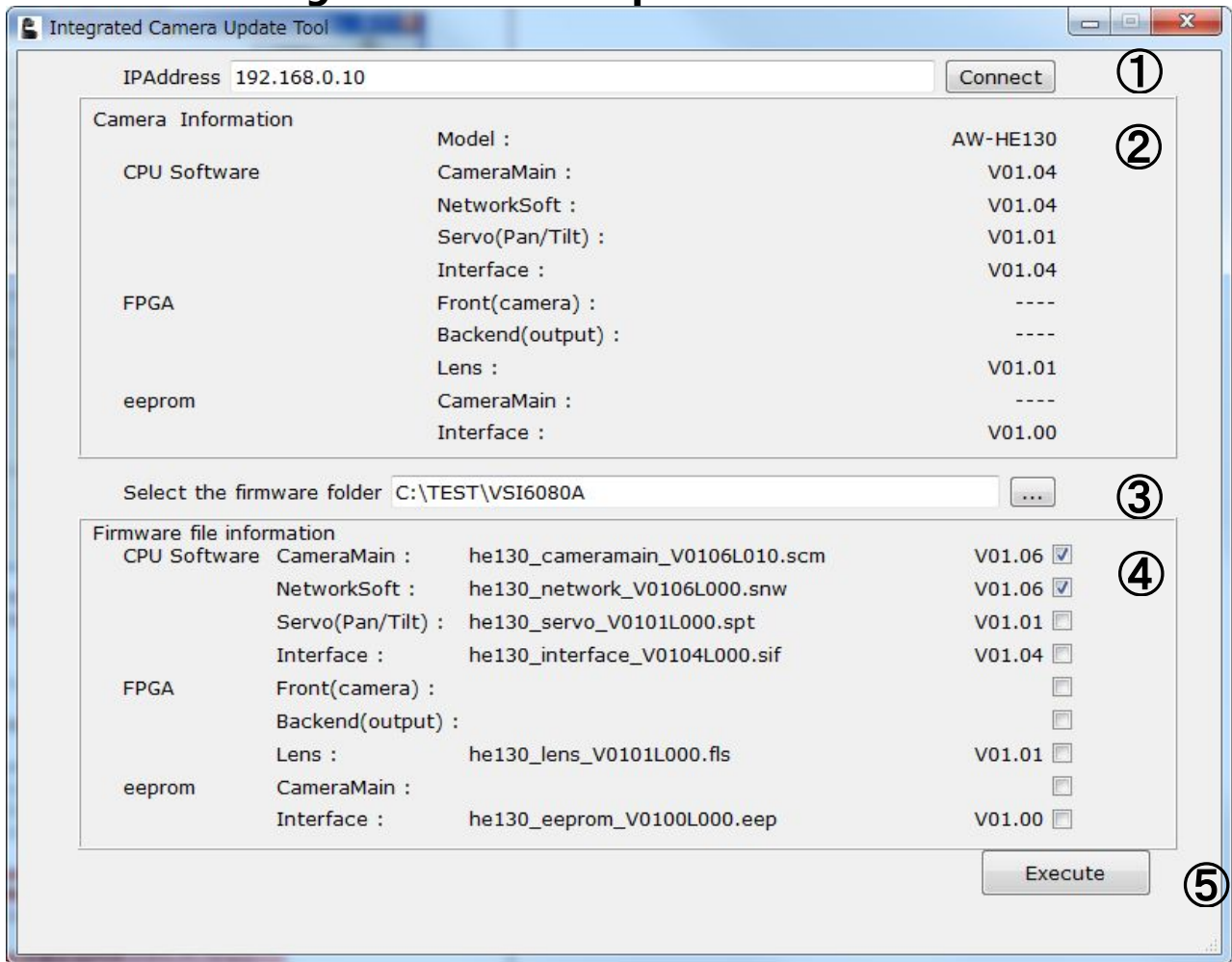
Also, please do not launch two or more Integrated Camera Update Tools at the same time.

Please set up the PC as following.

Authentication: Digest or Basic / Basic

Please refer to the Operation Instructions of AW-HR140 for details.

How To Use Integrated Camera Update Tool



- ① IP Address Enter the IP address of remote camera.
- ② Camera Information Camera information about remote camera is shown.
- ③ Select the firmware folder Select the update folder.
- ④ Firmware file information Information about update file is shown.
- ⑤ Execute Updating gets started.

Model		Model No. of camera (The above figure is an example of AW-HE130.)
CPU Software		
	CameraMain	Version No. for camera module
	NetworkSoft	Version No. for network module
	Servo(Pan/Tilt)	Version No. for Pan/Tilt module
	Interface	Version No. for interface module
FPGA		
	Front(camera)	FPGA version No. for camera module
	Backend(output)	FPGA version No. for output module
	Lens	FPGA version No. for lens module
eeprom		
	CameraMain	EEPROM version No. for camera module
	Interface	EEPROM version No. for interface module

[Note] Depending on the model, some version No. may be shown as "----".

Update Procedure

1. Start up this tool.

When this tool is used, please do not start up other web browsers.

Also, please do not launch two or more Integrated Camera Update Tools at the same time.

2. ① In "IP Address" box, enter the IP address of remote camera that needs updating.

If you do not know its IP address, please use "Easy IP Setup Tool" to make sure of it.

Please refer to Operating Instructions of each model to find out about how to use "Easy IP Setup Tool".

3. Press "Connect" button.

② Software version numbers in this camera will be shown at "Camera Information" area.

4. ③ Click the browse button next to "Select the firmware folder" box to specify the downloaded folder that contains update file.

[Note]

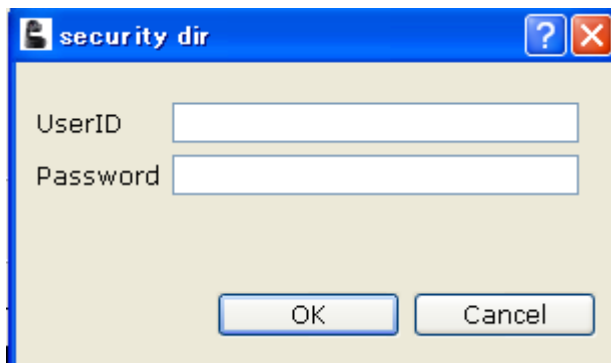
By clicking the browse button, program folder (application folder) may be shown. Please move to the update folder that has been prepared at "Preparing the update file".

④ At "Firmware file information" area, names and version numbers of update files required for selected remote camera will be shown.

Files to be updated can be selected using checkboxes at the right ends, but please do not remove check marks because all the files shown at the area need to be updated.

5. ⑤ Press "Execute" button.

The following dialog box will appear.



6. Enter User ID and Password that are set for the remote camera.

Initial User ID and Password are as follows.

User ID: admin

Password: 12345

7. Press "OK" button to start updating.

[Note]

- After pressing "OK" button, it may take some time before progress bar starts working to indicate that the update process is in progress.
- The process may move on to the next step before the bar reaches 100%
- Please perform the update process using PC in the same subnet as camera unit.
- While updating, please do not turn off the camera unit. (Until the completion dialog box appears.)
- Please do not perform any operations at all until the update process is completed.

 **Errors****Action for an error that has occurred**

If the error message is shown, please perform the update again from the beginning.

No Connect Camera	Camera is not recognized by this tool. Enter the IP address so that camera information will be shown.
CameraErr	Camera is not connected or IP address is wrong.
UpdateErr	Update process is not completed. Update process may have failed to be completed and timed out. Press "Connect" button to get camera information, and then try to perform the update process again. At that time, be careful not to remove check marks from the required files to update all of them again.