

AG-HPX170 series Software (Firmware) update procedure

1. Version Information

1-1. Use "P2 Status Logger"

Please use "P2 Status Logger" application software for making sure the software update is done correctly.

To use "P2 Status Logger", please connect the unit to a PC with the USB 2.0 cable.

The PC is needed to be connected to the internet while running "P2 Status Logger".

Please refer to the operating instruction manual for "P2 Status Logger" for the detail information.

You need to be a member of "P2 Asset Support System" to download the "P2 Status Logger" software.

If you haven't been a member of "P2 Asset Support System" yet, please go to the URL below and make a registration.

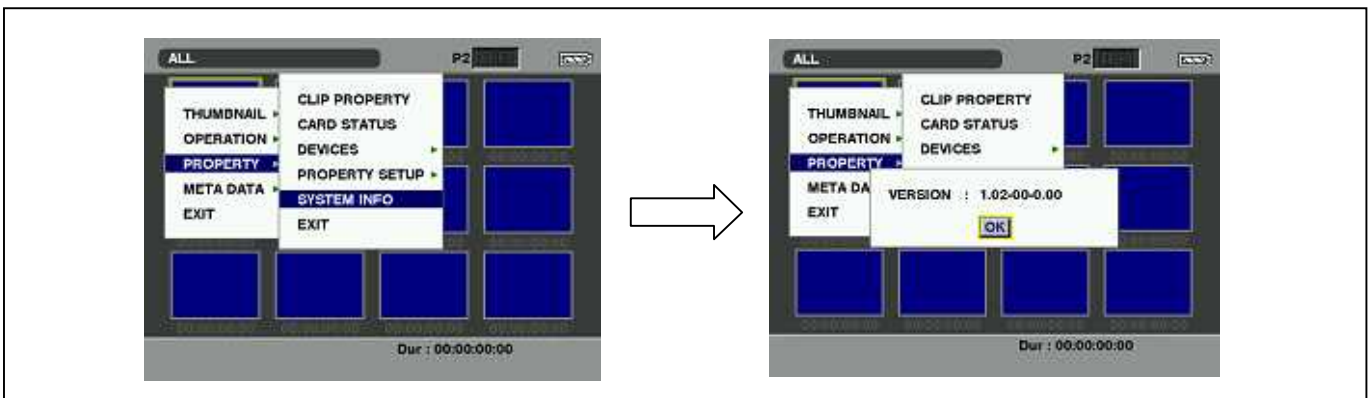
<P2 Asset Support System> http://panasonic.biz/sav/pass_e

1-2. Confirm the version number

If it is difficult to access the internet or to make the registration, please check the firmware version on the MENU of AG-HPX170 series.

Please confirm that the version number has been updated as follows, when you execute the update of the firmware.

1. This camera recorder is set to **MCR** mode.
2. In the thumbnail screen, press **MENU** button to display the menu.
3. Select the item "**PROPERTY**" on the menu and press the **SET** button.
4. Next, select the item "**SYSTEM INFO**" on the menu and press the **SET** button. The version is displayed like following sample.



2. Preparation

CAUTION: Before Updating Software

- **Do not power down or pull card while upgrading.** If the program quits during loading, the data will be erased or part writing condition and the restart is not made.

< Preparation for SD memory card >

1. SD memory card (more than 64MB memory card) is required.
2. Insert an SD memory card into the P2 equipment and format it.

NOTE: SD memory card used in the P2 equipment requires to be conformed to SD™ standards. Be sure to format SD memory card with P2 equipment.

< Copy of Image data for update >

1. Download the file "**VSI*****.zip**" from the support desk.
<https://eww.pavc.panasonic.co.jp/pro-av/>
2. Copy the file "**VSI*****.zip**" to hard disk of your PC and extract the file.
3. Insert a formatted SD memory card into the card slot of PC. Copy the folder "**PRIVATE**" to SD memory card.

The downloaded image data (upgrade file: **VSI*****.img**) is included in folder “**PRIVATE**”.

NOTE: Do not change the construction of folder and file name. The folder construction shown in the following and top of directory should be “**PRIVATE**”.

Folder: PRIVATE \ MEIGROUP \ PAVCN \ SBG \ P2SD \ FW \

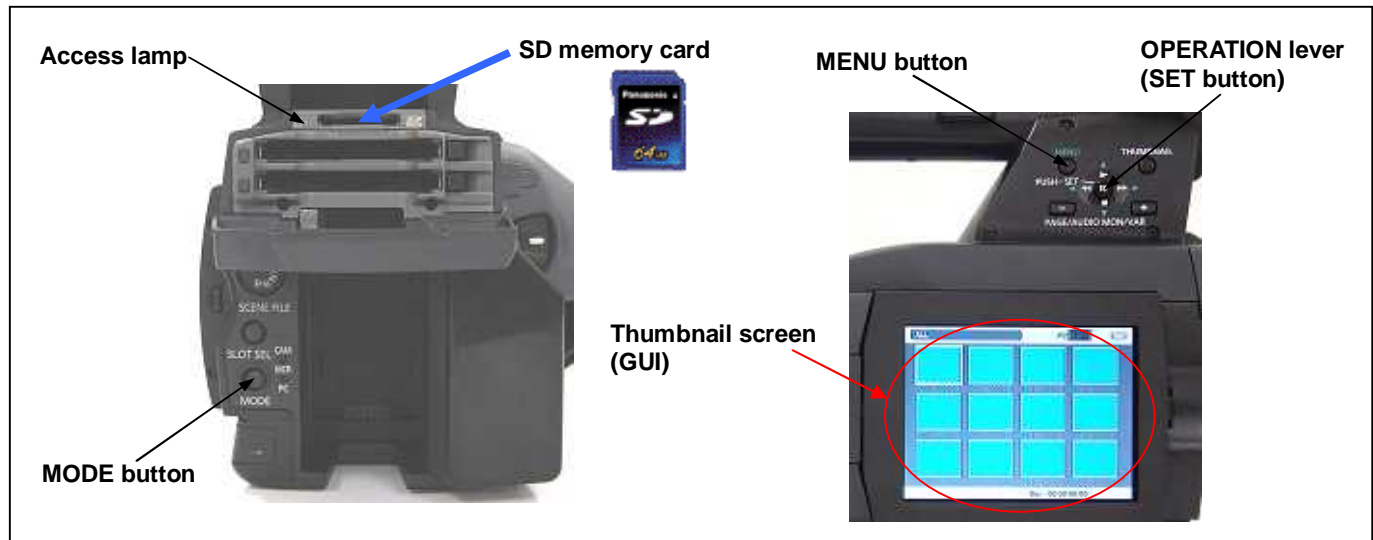
File Name: VSI*****.img

< External Power >

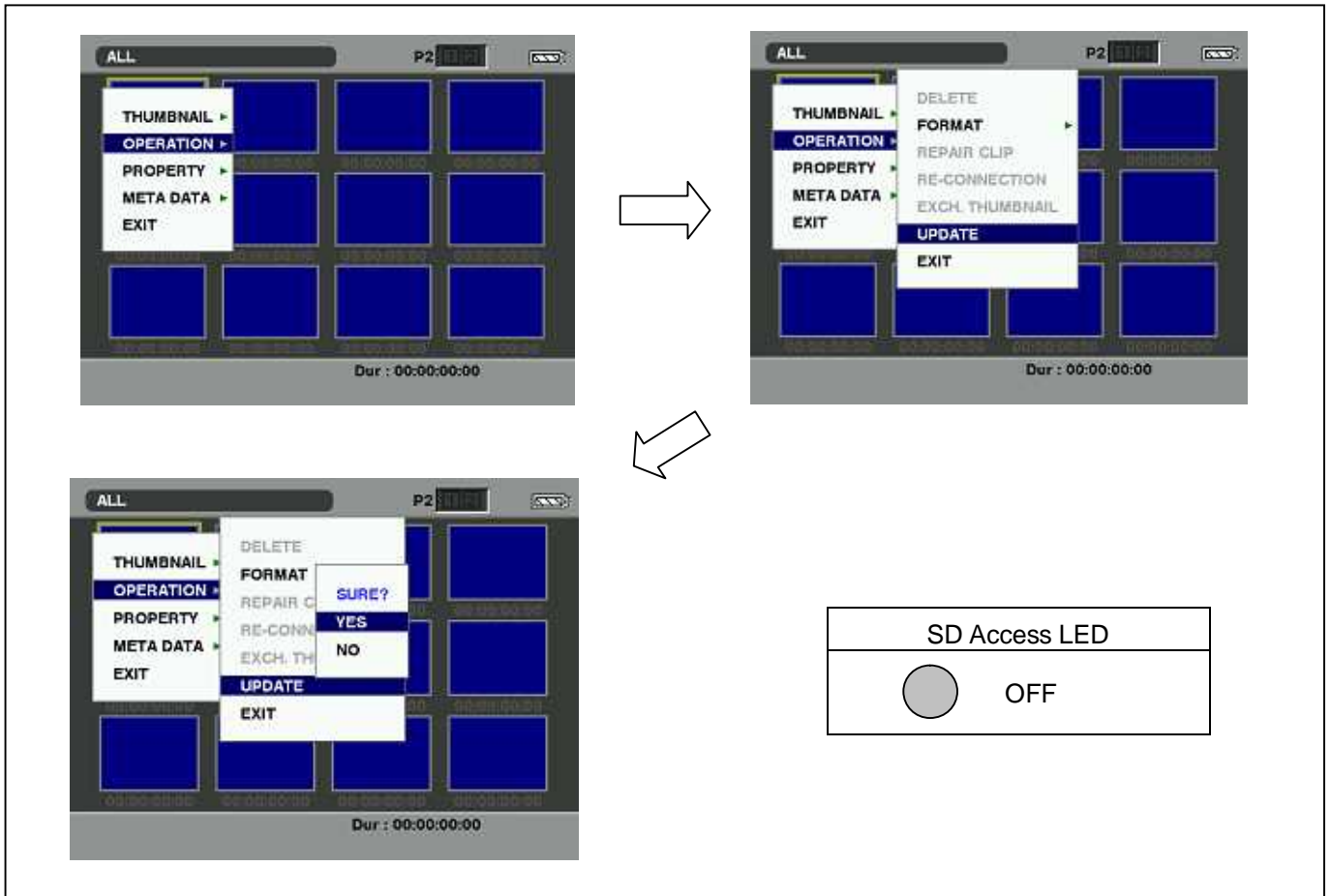
It is best to power the unit from the external power supply. This will prevent the unit from shutting off during updating.

3. Updated procedure

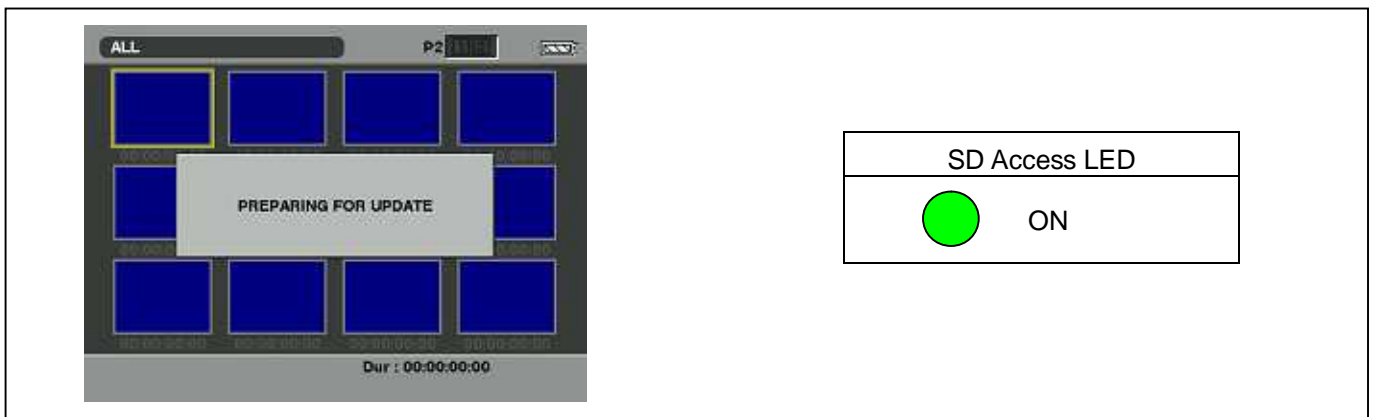
1. Turn on power this unit.
2. Press the **MODE** button to set to **MCR** mode.
3. Insert a formatted SD memory card into the SD memory card insertion slot of this unit.
4. Press the **MENU** button to display the menu on thumbnail screen.



5. Use the **OPERATION LEVER** buttons to select the item **“OPERATION”** and press **SET** button to open the OPERATION menu.
6. Select the item **“UPDATE”** on the menu and press the **SET** button (If the update SD memory card does not insert into the unit, item **“UPDATE”** does not appeared.). The confirmation menu of the execution is displayed. If update is executed, select the item **“YES”** and press **SET** button. In this time, **Access lamp(SD Access LED)** is turned off.

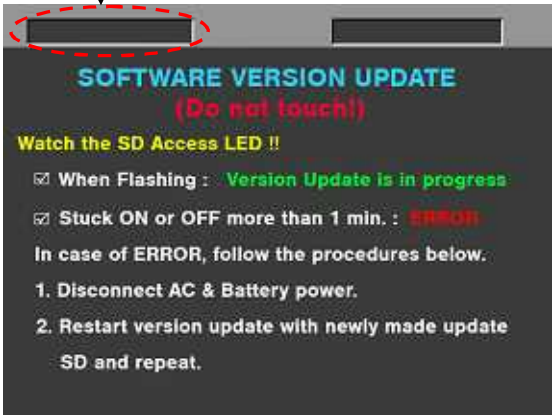
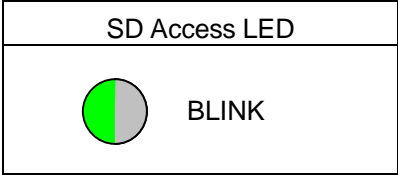


7. Update program is started and the message **“PREPARING FOR UPDATE”** appears on screen. In this timing, it is doing preparation such as the confirmation of the data of the updating. In this time, **Access lamp(SD Access LED)** is light.



8. When shifting to the update process of the flash and microcomputer, following screen is displayed. During updating software, **Access lamp (SD Access LED)** is blink.


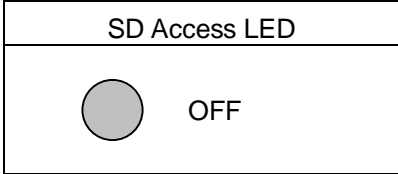
The name of firmware in the update is displayed.

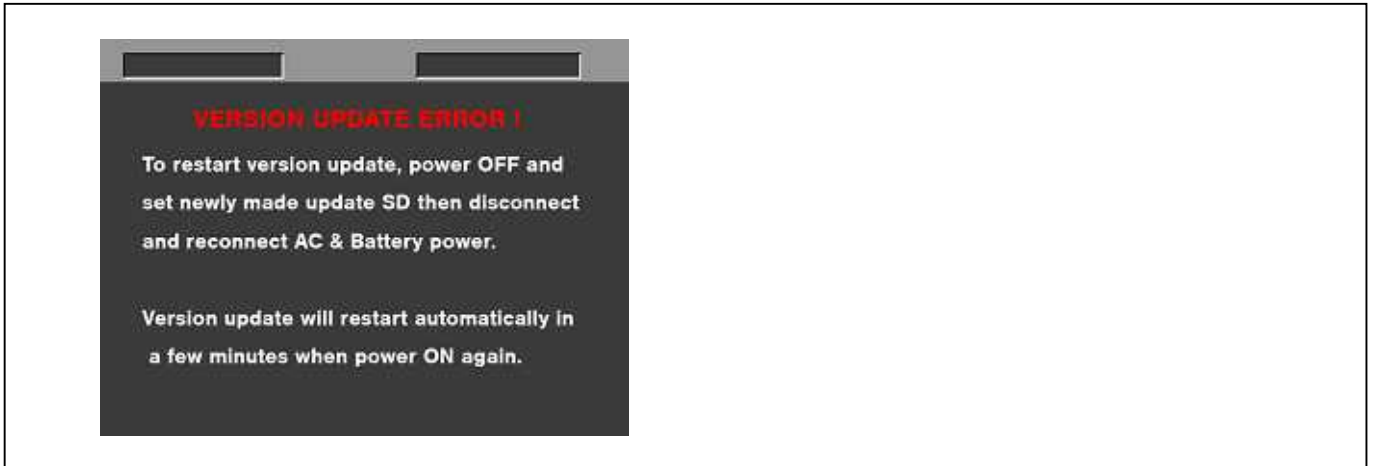
◆ Software update takes **approx. 10 min.**

NOTE: When the **Access lamp (SD Access LED)** remains being lit for more than 1 minute, updating is not completed normally even if the screen indicated as above. Turn the power of camera recorder to OFF and pull out the DC cable. Perform version update again with a newly made SD memory card for updating from the first step.

9. In updating succeed, following screen is displayed. In this time, **Access lamp (SD Access LED)** is turned off.

NOTE: If the update is not successful, an error message will appear as follows.



◆ When the power supply is shut off on the way of updating, or when updating does not start, or when the above error occurs, turn the power OFF and ON. Then perform writing again.

10. In updating succeed, remove the SD memory card and turn the power of camera recorder to OFF and pull out the DC cable. Then turn the power of camera recorder to ON to restart. This procedure is required to work the camera recorder normally.

NOTE:

- Power OFF/ON by the power SW of camera recorder does not work just after updating the software. Please shut OFF the power supply (AC Adapter).
- The power OFF and ON of camera recorder is required for updating data renewal.

4. Confirm update

Please check the firmware version according to the item "1.Version information". After you finish the update and power ON the unit, please use "P2 Status Logger" application software for making sure the software update is done correctly.

If it is difficult to access the internet or to make the registration, please check the firmware version on the MENU. But it is strongly recommended to use "P2 Status Logger" for checking the update result to avoid a mistake.