

AG-HPG20

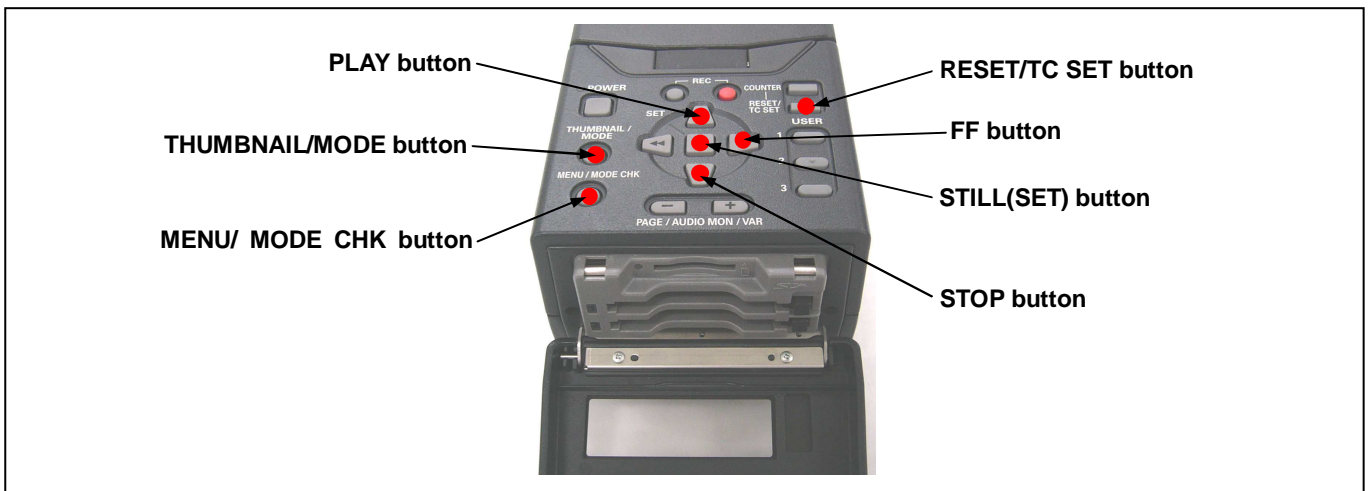
Software (Firmware) update procedure

1. Version Information

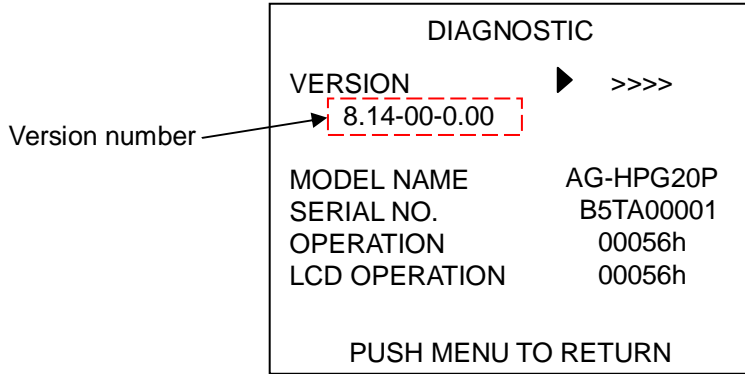
1-1. Confirm the version number

The version number of software is displayed in DIAGNOSTIC menu screen of setting menu.

1. Hold down the **POWER** button for at least 1 second to turn the power on.
2. Press "**THUMBNAIL/MODE**" button to switch to the normal display screen.
3. Press "**MENU/MODE CHK**" button to display the setting menu.
4. Press **PLAY** or **STOP** button to select the DIAGNOSTIC menu and press **STILL(SET)** button to open the DIAGNOSTIC menu.

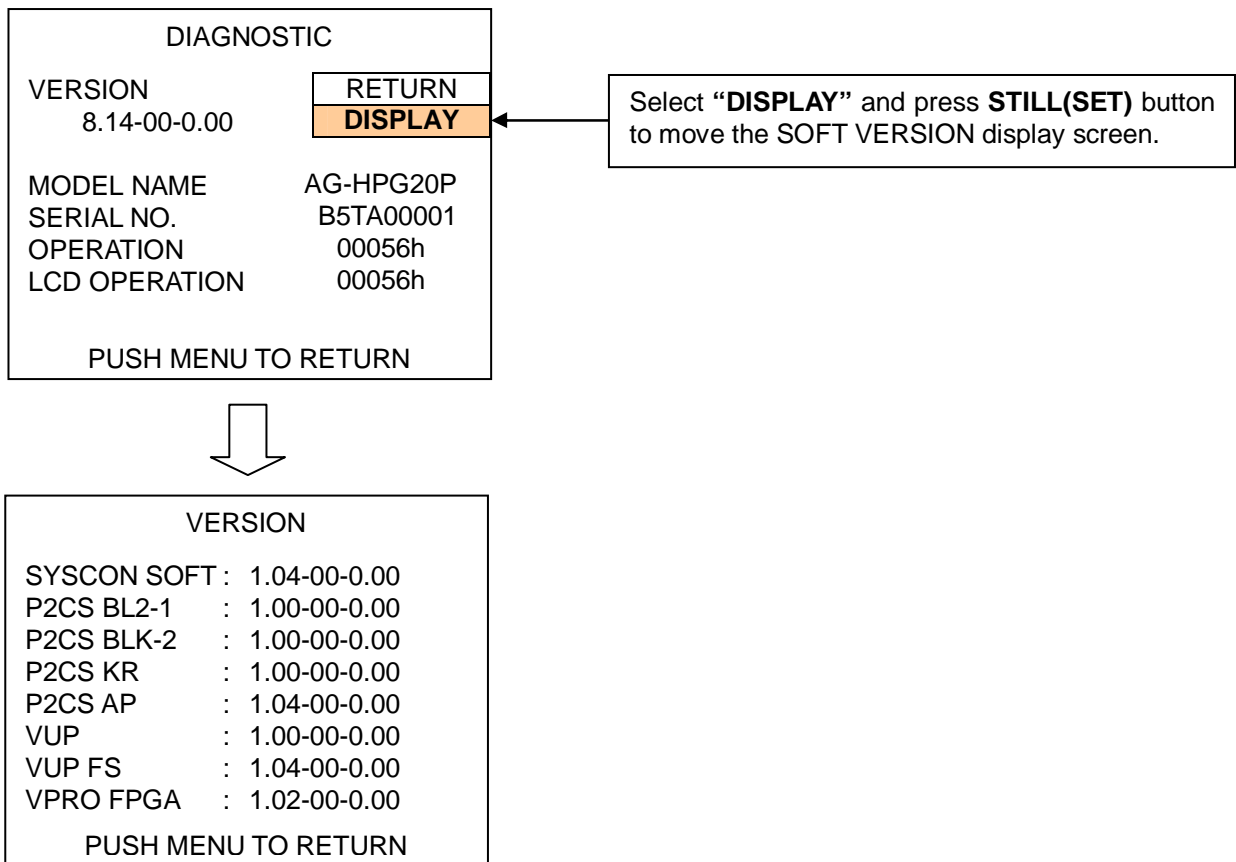


5. The version number is displayed under item VERSION.



6. Press **FF** button.

7. Select **“DISPLAY”** and press **STILL(SET)** button to display the version of each software shown in item 6-1.



2. Preparation

CAUTION: Before Updating Software

- **Do not power down or pull card while upgrading.** If the program quits during loading, the data will be erased or part writing condition and the restart is not made.

< Preparation for SD memory card >

1. SD memory card (more than 64MB memory card) is required.
2. Insert an SD memory card into the P2 equipment and format it.
 Updating P2 equipment *1) : Use an SD card formatted on P2 equipment
 Updating microP2 equipment *2) : Use an SD card formatted on microP2 equipment.
 *1) P2 equipment refers to the equipment which hasn't been performed the update for microP2.
 *2) microP2 equipment refers to the equipment which has already been performed the update for microP2.

NOTE:

When you update an AG-HPG20 with firmware not compatible with microP2 (with a version earlier than ver. 12.11-), please use an SD card formatted on this AG-HPG20 or P2 equipment which is not compatible with microP2.

The SD card formatted on microP2 equipment can not be used for the update for non-microP2 equipment.

NOTE: SD Card needs to be formatted by P2 equipment. SD card formatted by PC standard formatter will not work.

< Copy of Image data for update >

1. Download the file "VSI*****.zip" from the support desk.
<http://pro-av.panasonic.net/en/>
2. Copy the file "VSI*****.zip" to hard disk of your PC and extract the file.
3. Insert a formatted SD memory card into the card slot of PC.
4. Copy the folder "PRIVATE" to SD memory card. The downloaded image data (upgrade file: VSI*****.img) is included in folder "PRIVATE".

NOTE: Do not change the construction of folder and file name. The folder construction shown in the following and top of directory should be "PRIVATE".

Folder: PRIVATE \ MEIGROUP \ PAVCN \ SBG \ P2SD \ FW \
 File Name: VSI*****.img

< External Power >

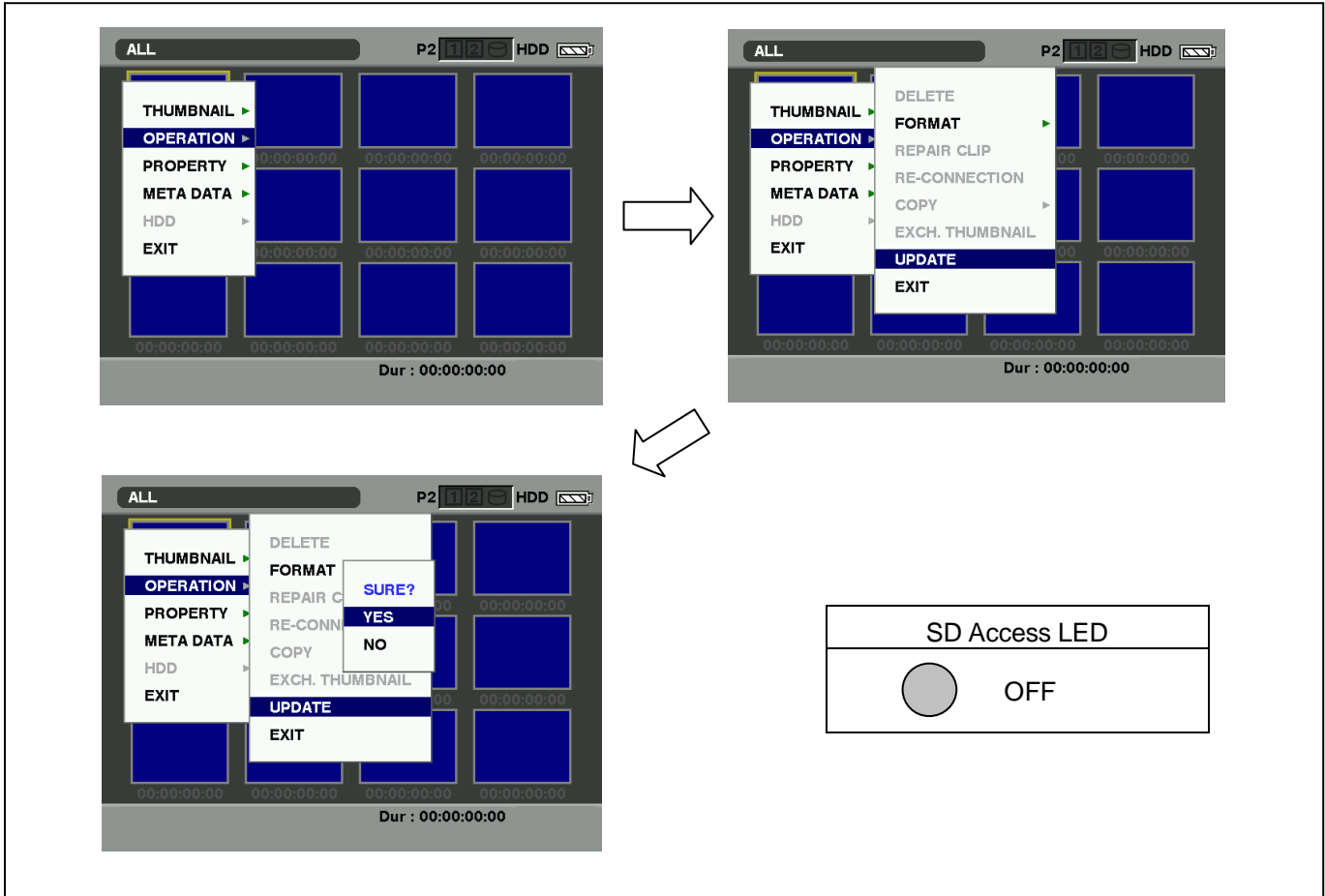
It is best to power the unit from the external power supply. This will prevent the unit from shutting off during updating.

3. Updated procedure

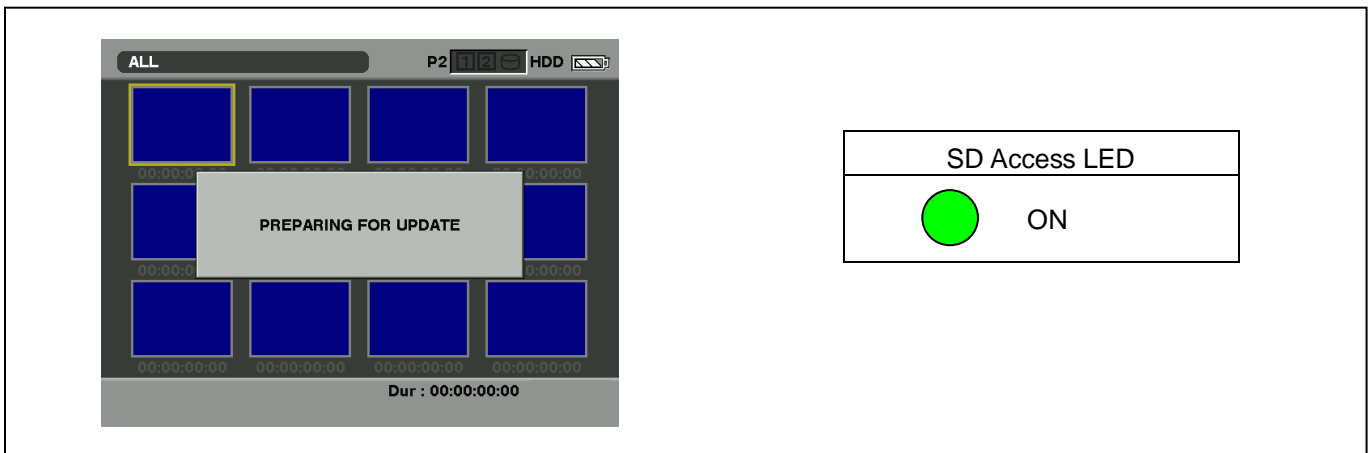
1. Hold down the **POWER** button for at least 1 seconds to turn the power on. The thumbnail screen now appears.
2. Insert a formatted SD memory card into the SD card slots of this unit.
3. Press the **MENU/MODE CHK** button to display the menu on thumbnail screen.



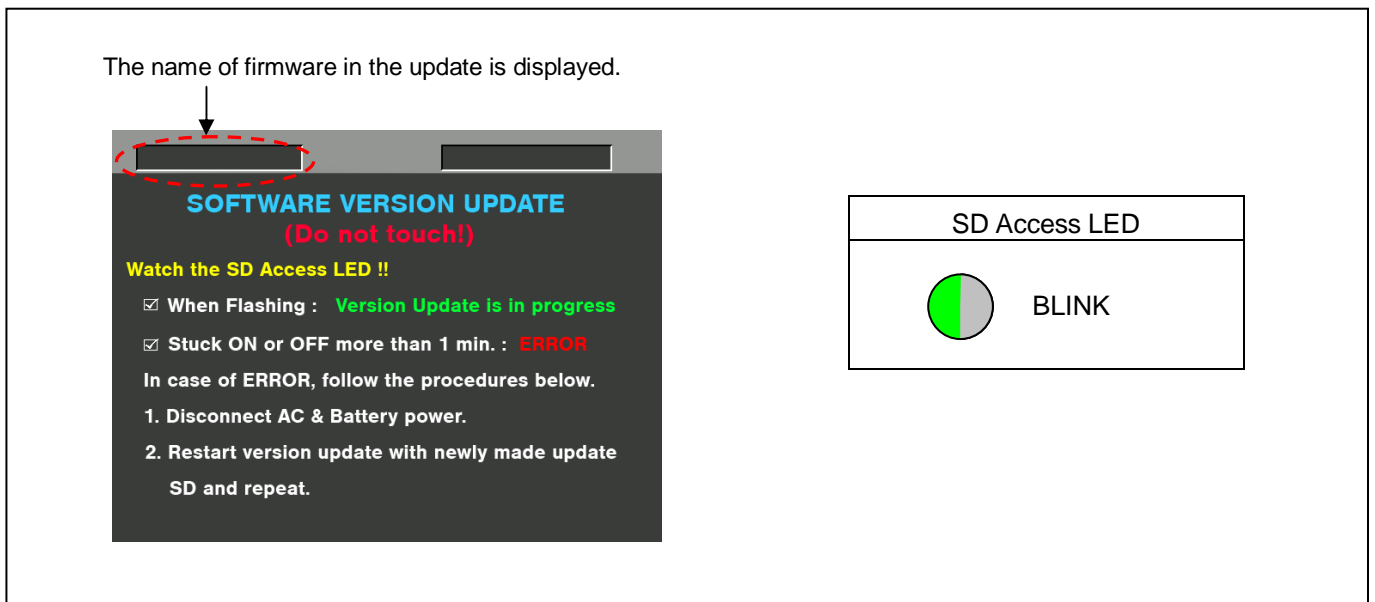
4. Use the **PLAY** or **STOP** button to select the item **“OPERATION”** and press **STILL(SET)** button to open the OPERATION menu.
5. Select the item **“UPDATE”** on the menu and press the **STILL(SET)** button (If the update SD memory card does not insert into the unit, item **“UPDATE”** does not appeared.). The confirmation menu of the execution is displayed. If update is executed, select the item **“YES”** and press **STILL(SET)** button. In this time, **SD Access LED** is turned off.



6. Update program is started and the message **“PREPARING FOR UPDATE”** appears on screen. In this timing, it is doing preparation such as the confirmation of the data of the updating. In this time, **SD Access LED** is light.



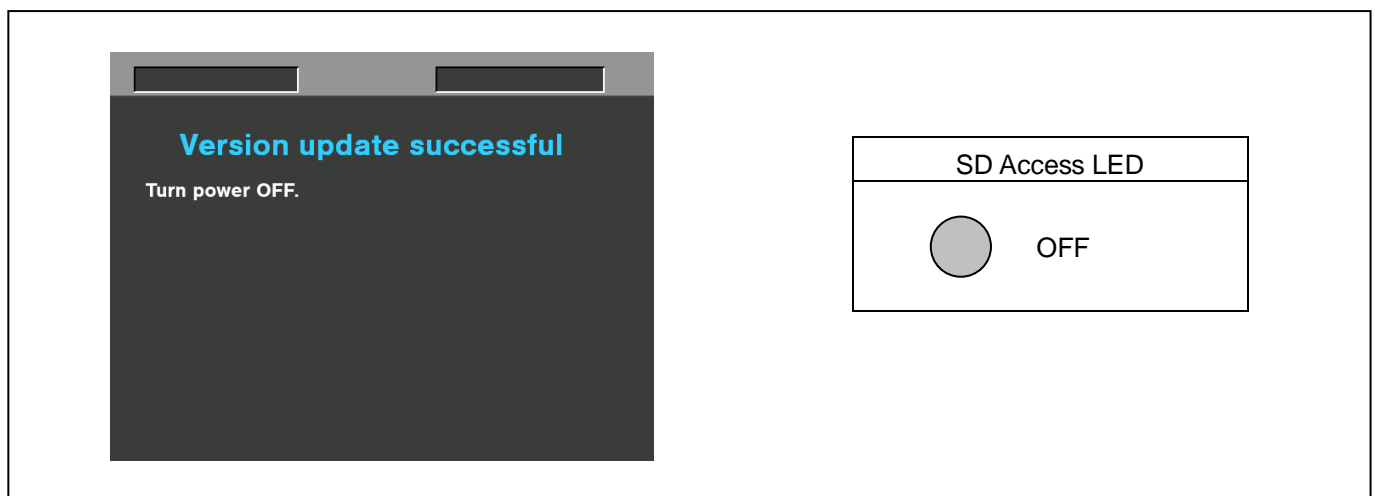
7. When shifting to the update process of the flash and microcomputer, following screen is displayed. During updating software, **SD Access LED** is blink.



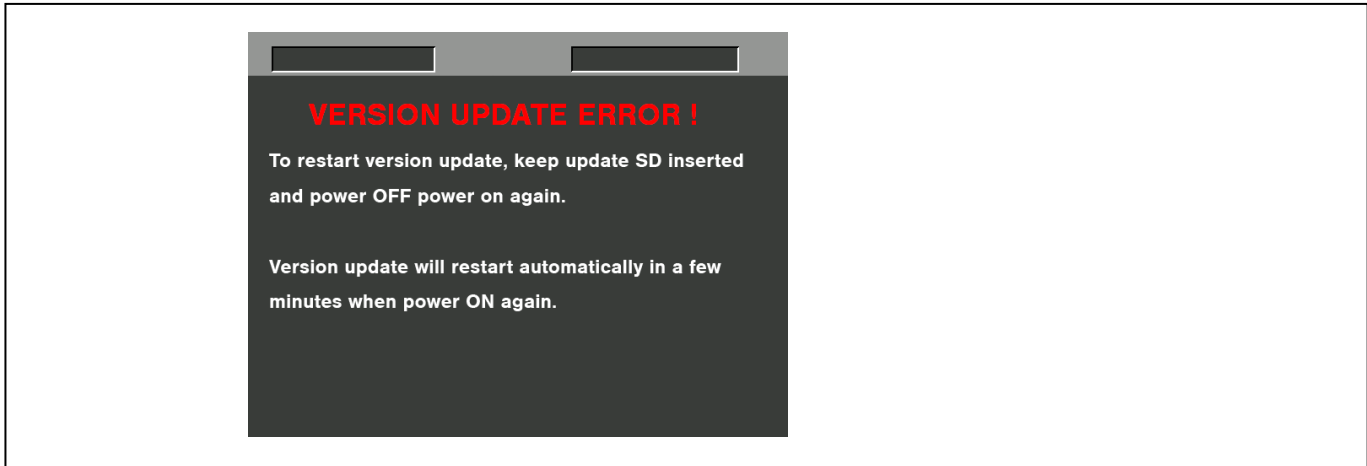
◆ Software update takes approx. 15 min.

NOTE: When the **SD Access LED** remains being lit for more than 1 minute, updating is not completed normally even if the screen indicated as above. Turn the power of recorder to OFF and pull out the DC cable. Perform version update again with a newly made SD memory card for updating from the first step.

8. In updating succeed, following screen is displayed. In this time, **SD Access LED** is turned off.



NOTE: If the update is not successful, an error message will appear as follows.



- ◆ When the power supply is shut off on the way of updating, or when updating does not start, or when the above error occurs, turn the power OFF and ON. Then perform writing again.
 - 9. In updating succeed, remove the SD memory card and turn the power of recorder to OFF and pull out the DC cable. Then turn the power of recorder to ON to restart. This procedure is required to work the recorder normally.
- NOTE:**
- Power OFF/ON by the power SW of recorder does not work just after updating the software. Please shut OFF the power supply (AC Adapter).
 - The power OFF and ON of recorder is required for updating data renewal.

4. Confirm update

Please check the firmware version on the MENU according to the item "1.Version information".

You can use "P2 Status Logger" application software for making sure the software update is done correctly.

To use "P2 Status Logger", please connect the unit to a PC with the USB 2.0 cable.

The PC is needed to be connected to the internet while running "P2 Status Logger".

Please refer to the operating instruction manual for "P2 Status Logger" for the detail information.

You need to be a member of "P2 Asset Support System" to download the "P2 Status Logger" software.

If you haven't been a member of "P2 Asset Support System" yet, please go to the URL below and make a registration.

<P2 Asset Support System> http://panasonic.biz/sav/pass_e