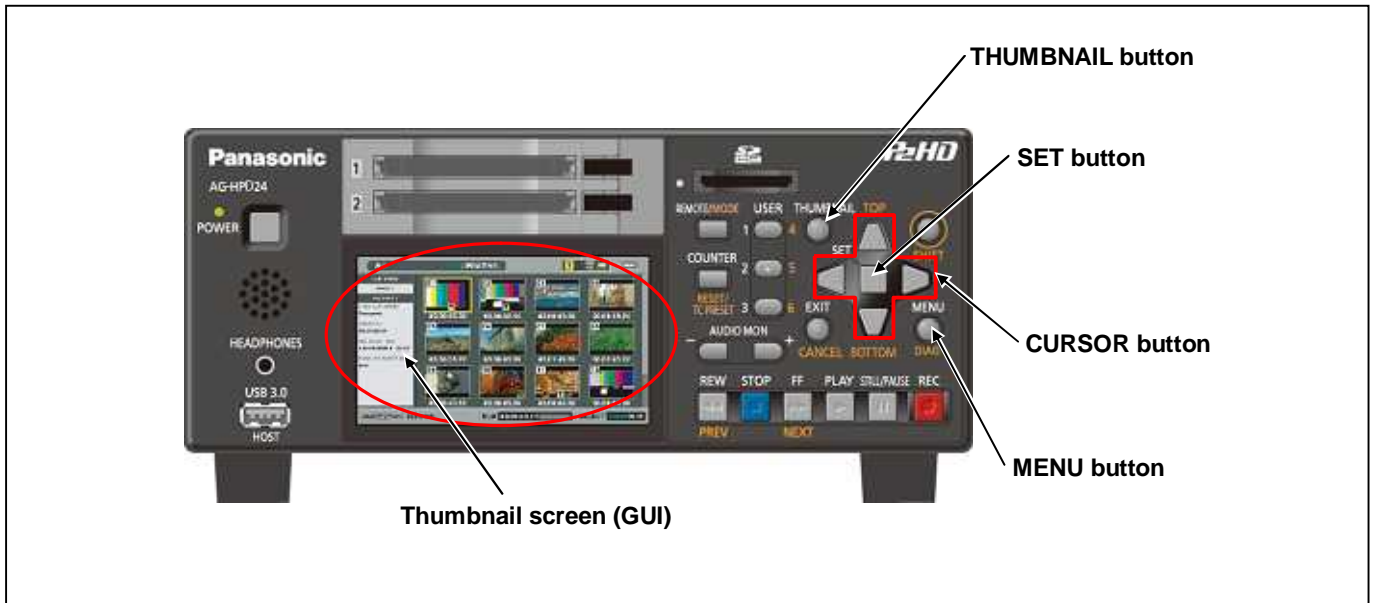


AG-HPD24 Software (Firmware) update procedure

1. Version Information



1. Press the **THUMB NAIL button** to display the thumbnail screen.
2. Press the **MENU button** to display the menu.
Use the **CURSOR buttons** to select the item "SYSTEM INFO" - "VERSION" and press **SET button** to display the version of firmware in the AG-HPD24.

2. Update with the SD Card

2-1. Summary

1. Copy the update file of the Driver Software (Firmware) to an SD card.
2. Software can be updated using this SD card.

CAUTION: Before Update Software

- **Do not power down or pull card while upgrading.** If the program quits during loading, the data will be erased or part writing condition and the restart is not made.

2-2. Preparation

< Preparation for SD Card >

1. SD Card (more than 64MB memory card) is required. Use only SD memory cards that comply with the SD or SDHC specifications.
2. Insert an SD card into the P2 equipment and format SD card.
 Updating P2 equipment *1 : Use an SD card formatted on P2 equipment
 Updating microP2 equipment *2 : Use an SD card formatted on microP2 equipment.

*1 P2 equipment refers to the equipment which hasn't been performed the update for microP2.

*2 microP2 equipment refers to the equipment which has already been performed the update for microP2.

NOTE:

When you update an AG-HPD24 with firmware not compatible with microP2 (with a version earlier than ver. 8.14-00-0.00), please use an SD card formatted on this AG-HPD24 or P2 equipment which is not compatible with microP2.

The SD card formatted on microP2 equipment can not be used for the update for non-microP2 equipment.

Also, SD Card needs to be formatted by P2 equipment. SD card formatted by PC standard formatter will not work.

< Copy of Image data for upgrade >

Copy the update file of Software to the SD card as follows.

1. Download the Software file "VSI****.zip" from the support desk.
<http://pro-av.panasonic.net/en> -> Service & Support > Download > P2 > Software for P2 Products
2. Copy the file "VSI****.zip" to the hard disk of your PC and extract the file.
3. Insert a formatted SD card into the card slot of PC.
4. Copy **the whole folder "PRIVATE"** in the extracted folder to the SD card.

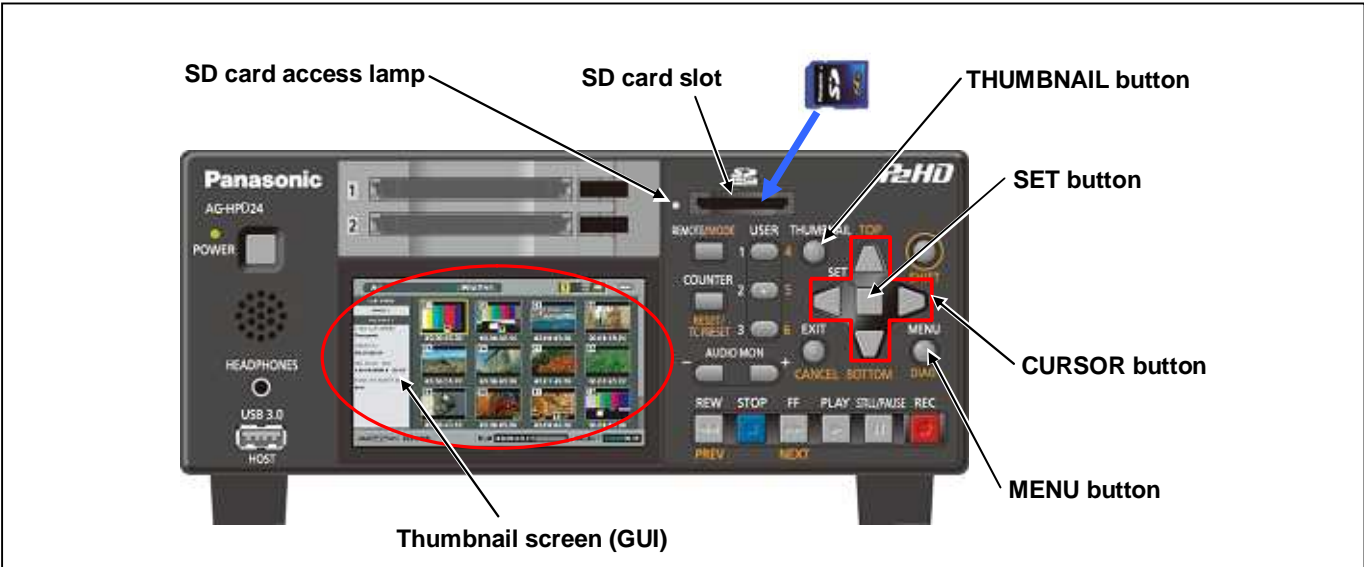
NOTE: Do not change the construction of folder and the file name.

NOTE: External Power

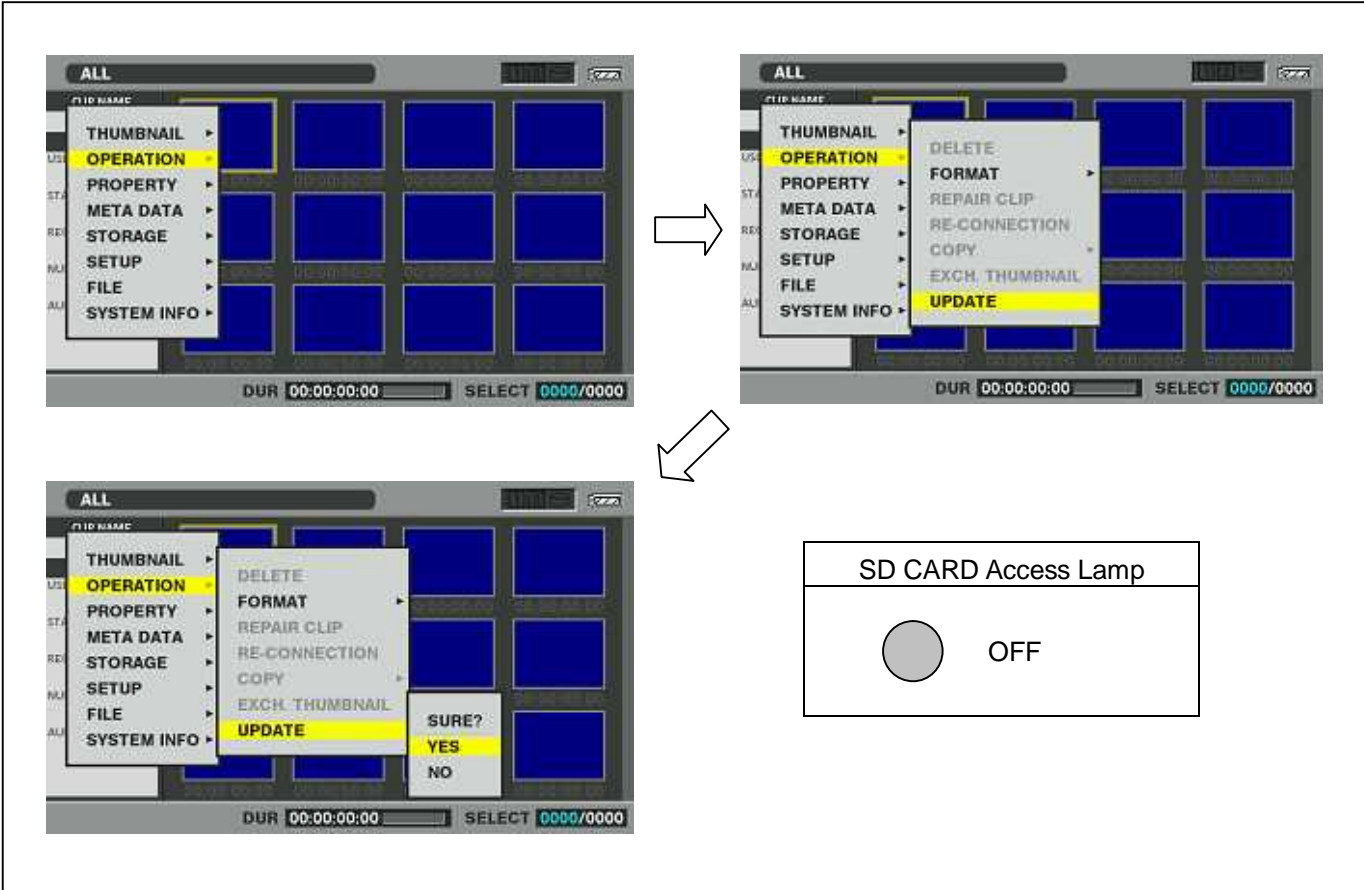
It is best to power the unit from the external power supply. This will prevent the unit from shutting off during updating.

2-3. Updated procedure

- 1. Insert a formatted SD memory card into the SD memory card insertion slot of this unit.

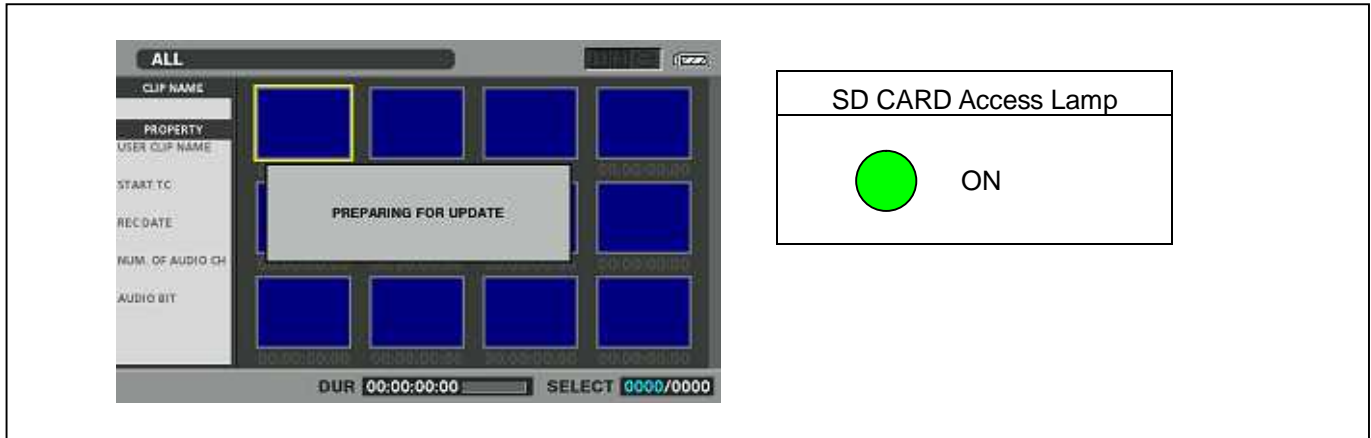


- 2. Press the **THUMBNAIL button** to display the thumbnail screen.
- 3. Press the **MENU button** to display the menu. Use the **CURSOR buttons** to select the item “**OPERATION**” and press **SET button** to open the OPERATION menu.
- 4. Select the item “**UPDATE**” on the menu and press the **SET button** (If the update SD memory card does not insert into the unit, item “**UPDATE**” does not appeared.). The confirmation menu of the execution is displayed. If update is executed, select the item “**YES**” and press **SET button**. In this time, Access Lamp of SD CARD slot is turned off.

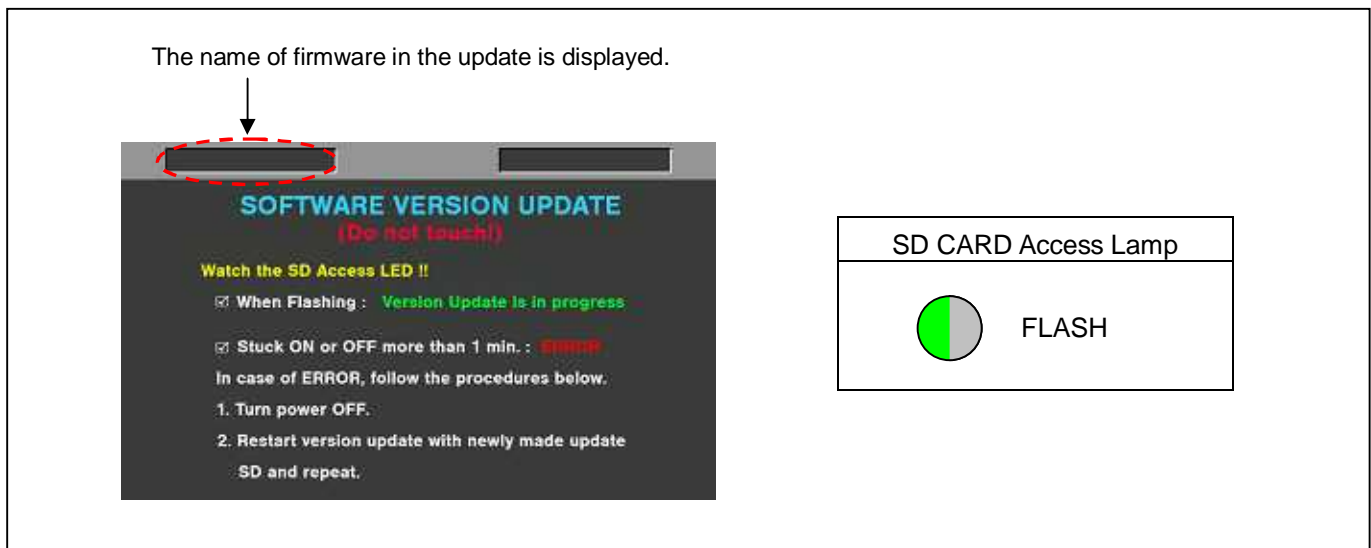


5. Update program is started and the message “**PREPARING FOR UPDATE**” appears on screen. In this timing, it is doing preparation such as the confirmation of the data of the updating. In this time, Access Lamp of SD CARD slot is turned on.

NOTE: To shift to the screen in step 5, it might be necessary for about 20 seconds.

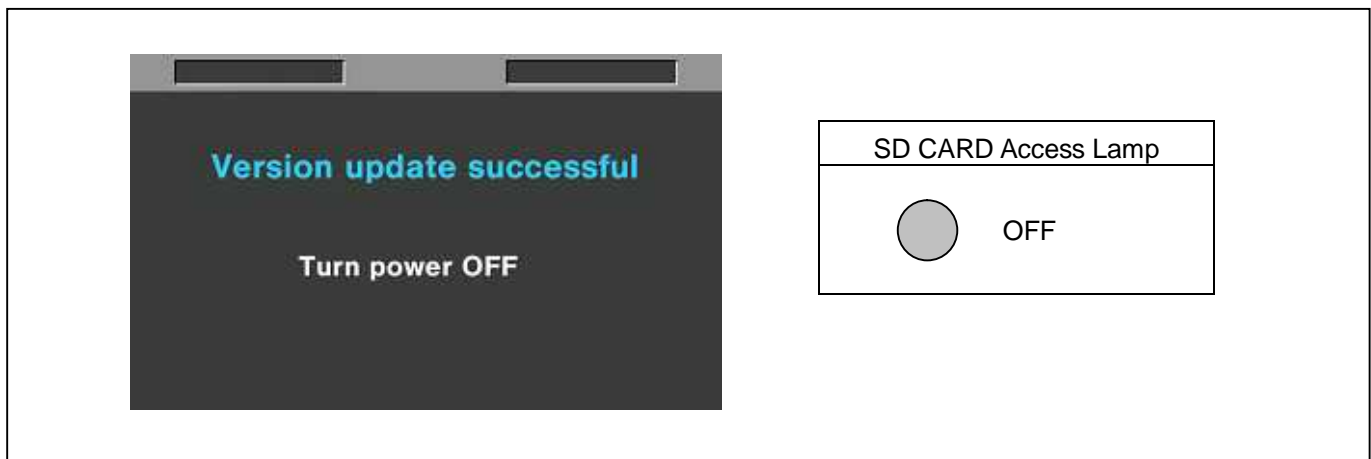


6. When shifting to the update process of the flash microcomputer, following screen is displayed. In this timing, it is doing preparation such as the confirmation of the data of the updating. In this time, Access Lamp of SD CARD slot is flash.



◆ Software update takes approx. 15 min.

7. In updating succeed, following screen is displayed. In this time, Access Lamp of SD CARD slot is turned off.



NOTE: If the update is not successful, an error message will appear as follows.



- ◆ If the power supply is shut down on the way to update or above error operation happens, turn the power OFF/ON then restart the write function start again in a few minutes.
8. Remove the SD memory card and turn the power to OFF. Then turn the power to ON to restart it. The power OFF and ON of this unit is required for updating data renewal.

3. Confirm update

After you finish the update and power ON the unit, please use "P2 Status Logger" application software for making sure the software update is done correctly.

To use "P2 Status Logger", please connect the unit to a PC with the USB 2.0 cable. The PC is needed to be connected to the internet while running "P2 Status Logger".

Please refer to the operating instruction manual for "P2 Status Logger" for the detail information.

You need to be a member of "P2 Asset Support System" to download the "P2 Status Logger" software. If you haven't been a member of "P2 Asset Support System" yet, please go to the URL below and make a registration.

<P2 Asset Support System> http://panasonic.biz/sav/pass_e

If it is difficult to access the internet or to make the registration, please check the firmware version according to the item "1. Version information".

But it is strongly recommended to use "P2 Status Logger" for checking the update result to avoid a mistake.