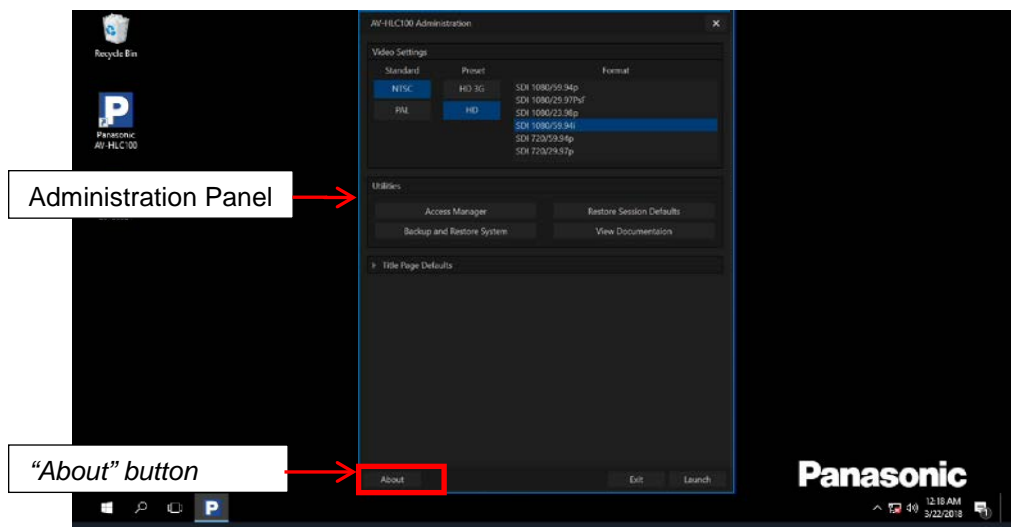


# AV-HLC100 Live Production Center Software update procedure

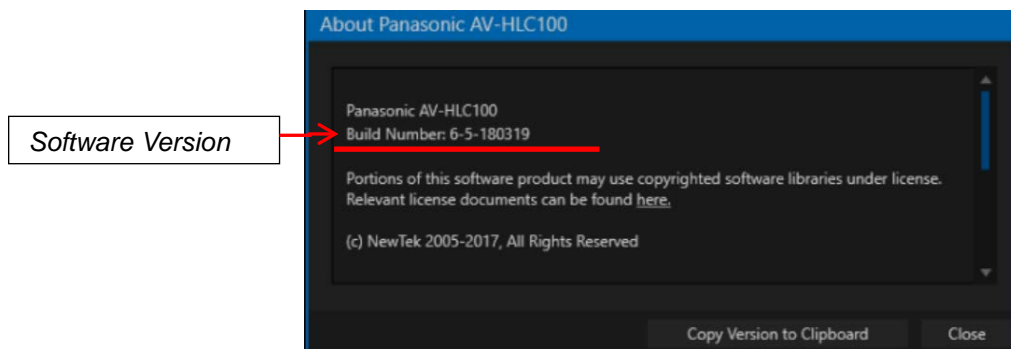
## 1. Version display and Preparation

### 1-1. The version is displayed in Administration Panel

1. Open the AV-HLC100 Administration panel.  
 Select "AV-HLC100 Admin" from the "Panasonic AV-HLC100" folder.  
 Or select "Exit to Administration" from the File menu in the Dashboard of the AV-HLC100 Live Desktop.
2. Click "About" at the bottom left of "Administration Panel".



Software Version (Build Number) display (Version display example)



## 1-2. Preparation

### **CAUTION : Before Updating Software**

#### **Do not draw out the inserted USB memory during access.**

If drawn out during access, the device may get damaged.

- Use the USB memory with 1GB or more capacity.
- Cannot use the USB memory with the security software.

### **< Copy the update file >**

1. Prepare a USB memory.
2. Download the AV-HLC100 updated software (DV91000270\*) to a PC from the following support web site.  
[http://pro-av.panasonic.net/en/ Service and Support](http://pro-av.panasonic.net/en/ServiceandSupport)
3. Extract the file “**DV91000270\*.zip**” and copy the extracted files to the USB memory.
4. Insert the USB memory into the port of AV-HLC100 main unit.  
Copy the files to any folder of the main unit.

**Panasonic AV-HLC100 Update-\*.bin : Approximately 400MB**

**Panasonic AV-HLC100 Update.exe : Approximately 1MB**

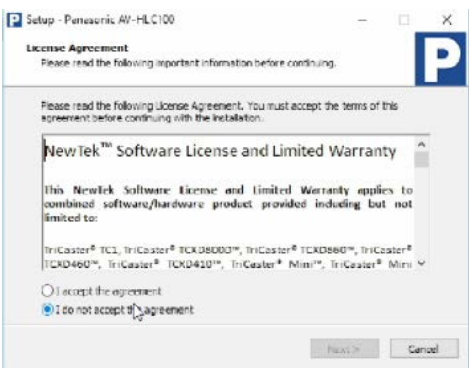
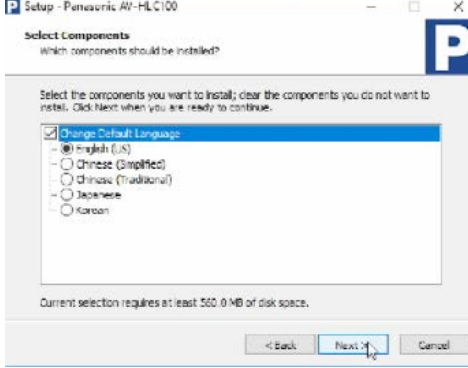
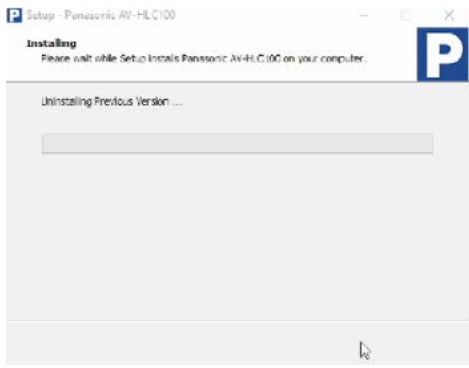
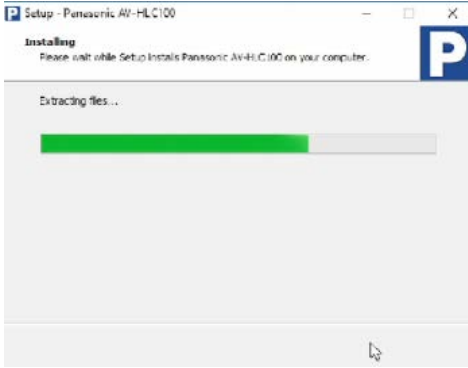
Note: To see the folders, right click “Windows Start Icon” and then select “File Explorer”.

When the copying is finished, the USB memory is not needed any longer.

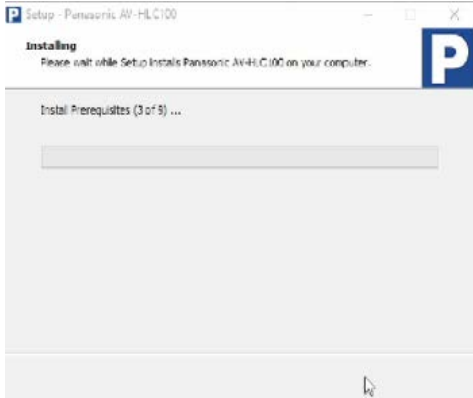
In addition to this, when the update is finished, the copied files are not needed any longer. So you could delete these files.

## 2. Update procedure

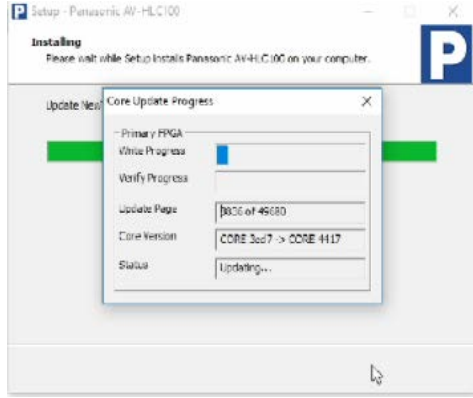
1. Turn on the power of AV-HLC100.  
 Note: Tap any key of the keyboard, otherwise the process may be not progress to the next step.
2. **Display the Windows screen**  
 (Click “Exit to Windows” on the AV-HLC100 Live Desktop or “Exit” on the Administration Panel.)  
 Right click “Windows Start Icon” and then select “File Explorer” to see the folders.
3. **Double-click the copied file “Panasonic AV-HLC100 Update.exe” and then update will automatically start.**  
 (Updating the software takes approx.10min.)
4. After the update software is launched, following windows will appear in order.

1	<p>&lt;License Agreement&gt;                  Select “ I accept the agreement”                  and then click “Next”</p> 	2	<p>&lt;Select components&gt;                  Select the default language                  and then click “Next”.</p> 
3	<p>&lt;Installing &gt;                  Uninstall previous version and then                  install will start.</p> 	4	<p>&lt;Installing &gt;                  The status bar of “extracting files”                  will appear.</p> 

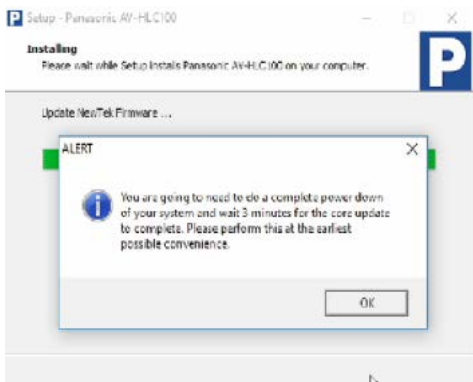
**5** <Installing>  
The status bar of “install prerequisites” will appear



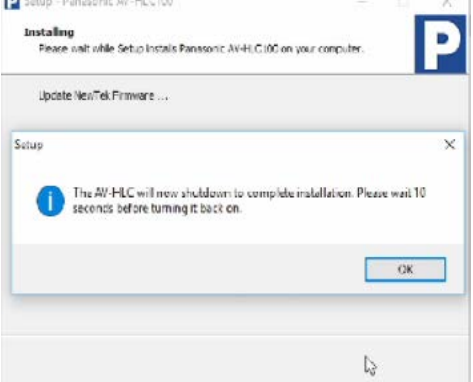
**6** <Installing >  
Core update progress will start.




**7** <Installing >  
A message “You are going to need to do a complete power down of your system and wait 3 minutes for the core update to complete” appears.



**8** <Installing>  
A message “The AV-HLC100 will Shutdown to complete installation” appears.





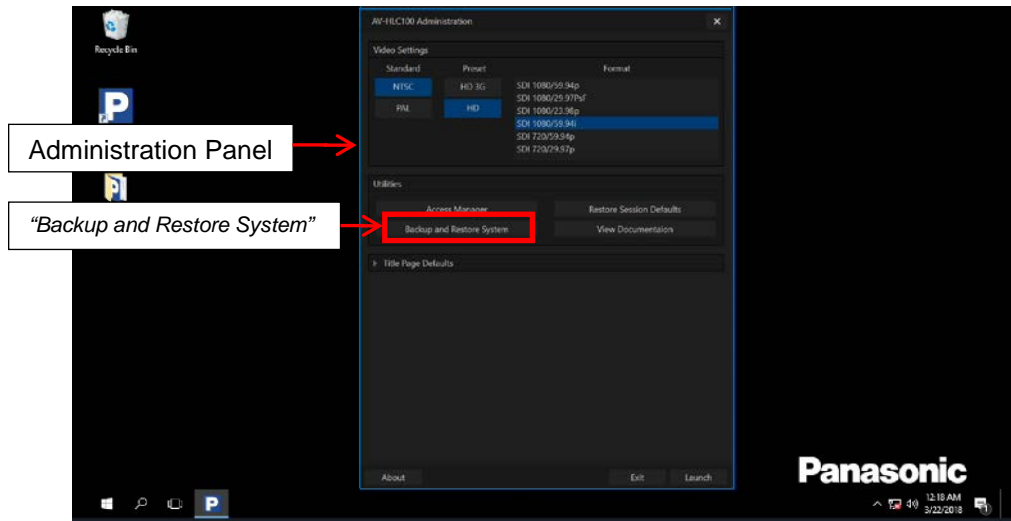
Click “OK” and then the system will shut down automatically. Turn on AV-HLC100.

5. When the update process completes successfully, the system will shut down automatically. Please wait a while until the system shut down.
6. And then, please operate the power switch of AV-HLC100 and reboot the system.
7. After the system is booted up, "EULA" (End User License Agreement) will appear on the screen. If you agree it, click "I Accept" button.
8. Open the Administrator Panel to confirm the version of software according as step 1-1.

### 3. Backup function

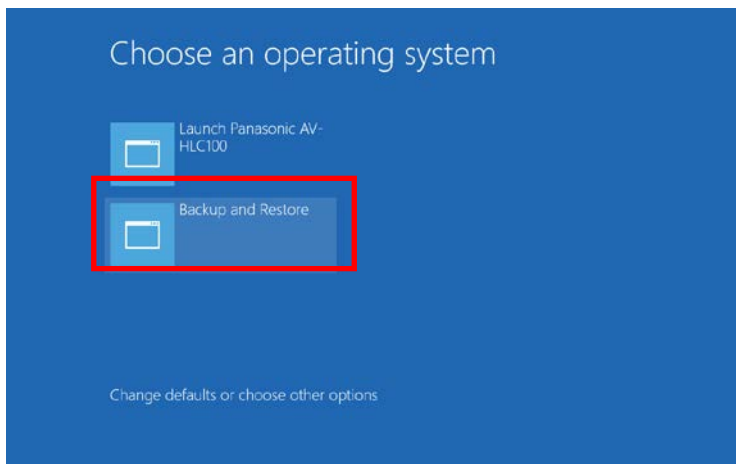
The disk image (the entire contents of the current disk) can be saved on the external HDD.

1. Prepare a HDD with a capacity of 250GB or more separately and connect it to the USB terminal of the main unit.  
\* Please be aware that data in this external HDD will be deleted.
2. Open the Administration Panel.
3. Click the button "Backup and Restore System".

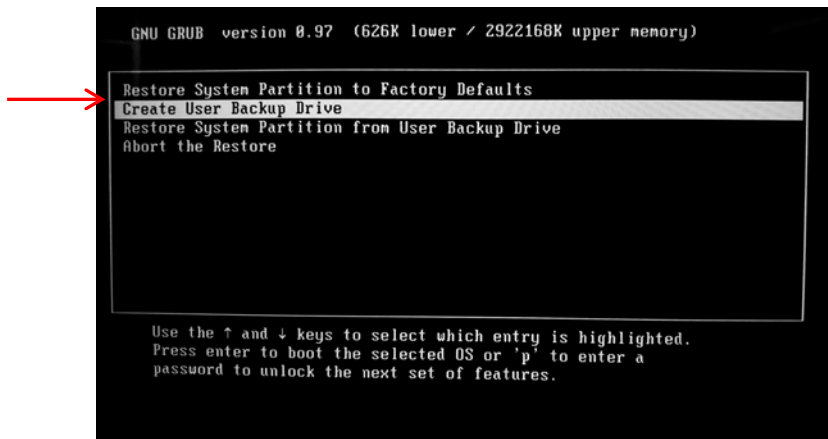


Make sure the message and then click "Begin Restore".

4. Click the icon "Backup and Restore System".  
Notice: The next screen will appear only several seconds.

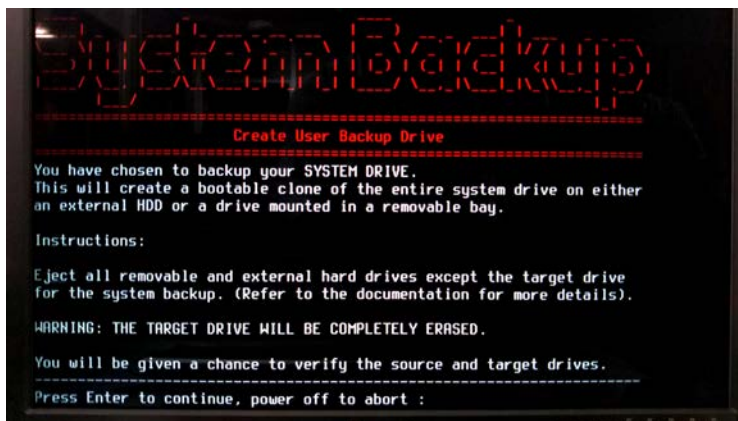


5. Select the item “Create User Backup Drive” within several seconds.



\* If the other processes different you're your purpose is running, please wait until the message “power off to abort” is displayed. Turn off the power of AV-HLC100 to abort the process.

6. Tap Enter key to display the message in progress and scroll the screen. (Approx. 1 min)
7. The screen “System Backup” is displayed. [Press Enter to continue, power off to abort:]  
Tap Enter key to start backup. (To abort the process, turn off the power of AV-HLC100.)



The backup will start and the messages in progress will be displayed. (Approx. 15min)

8. The backup is completed and the message “FINISHED” appears.

```
!!!!!!!!!!!!!!!!!!!!!!!!!!!!!!
!!! FINISHED - !!!
!!!!!!!!!!!!!!!!!!!!!!!!!!!!!!
```

9. Turn off the power of AV-HLC100.

This completes the backup to the external HDD.

When restore is executed from this HDD, the entire contents of the disk are copied to the HLC100 and can be restored.