

AW-HE145 Firmware Update Procedure

Please be sure to read this first.

The update of AW-HE145 camera is performed via a network from Web setting screen on PC.

There might be accidents in the process of updating such as changing the camera settings and others by mistake.

Please perform the update after taking every situation into careful consideration.

It is recommended that the current settings should be noted down in advance.

◆[Disclaimer of warranty]

IN NO EVENT SHALL Panasonic Corporation BE LIABLE TO ANY PARTY OR ANY PERSON, EXCEPT FOR REPLACEMENT OR

REASONABLE MAINTENANCE OF THE PRODUCT, FOR THE CASES, INCLUDING BUT NOT LIMITED TO BELOW.

- (1) ANY DAMAGE AND LOSS, INCLUDING WITHOUT LIMITATION, DIRECT OR INDIRECT, SPECIAL, CONSEQUENTIAL OR EXEMPLARY, ARISING OUT OF OR RELATING TO THE PRODUCT.
- (2) PERSONAL INJURY OR ANY DAMAGE CAUSED BY INAPPROPRIATE USE OR NEGLIGENT OPERATION OF THE USER.
- (3) UNAUTHORIZED DISASSEMBLE, REPAIR OR MODIFICATION OF THE PRODUCT BY THE USER.
- (4) INCONVENIENCE OR ANY LOSS ARISING WHEN IMAGES ARE NOT DISPLAYED, DUE TO ANY REASON OR CAUSE INCLUDING ANY FAILURE OR PROBLEM OF THE PRODUCT.
- (5) ANY PROBLEM, CONSEQUENTIAL INCONVENIENCE, OR LOSS OR DAMAGE, ARISING OUT OF THE SYSTEM COMBINED BY THE DEVICES OF THIRD PARTY.
- (6) ANY INCONVENIENCE, DAMAGES OR LOSSES RESULTING FROM ACCIDENTS CAUSED BY AN INADEQUATE INSTALLATION METHOD OR ANY FACTORS OTHER THAN A DEFECT IN THE PRODUCT ITSELF.
- (7) LOSS OF REGISTERED DATA CAUSED BY ANY FAILURE.
- (8) ANY DAMAGE OR CLAIMS DUE TO LOSS OR LEAKAGE OF IMAGE DATA OR SETTING DATA SAVED ON THIS UNIT OR ON A MEMORY CARD OR COMPUTER.

◆[Network security]

As connected to a network, your attention is called to the following security risks.

- (1) Leakage or disclosure of information transmitted via this unit
- (2) Unauthorized use of this unit by a third person with malicious intent
- (3) Interference or stoppage of this unit by a third person with malicious intent

It is your responsibility to take sufficient network security measures such as those described below to protect yourself against the above risks.

- + Use this unit in a network secured by a firewall, etc.
- + If this unit is used in a system with a computer connected, make sure that checks for and removal of computer viruses and malicious programs are implemented regularly.
- + Do not install the unit in a location where the unit, cables, and other parts may be easily damaged.

Preparing the update file

1. Download the latest software to the hard disk of your PC from web site.

https://eww.pass.panasonic.co.jp/pro-av/support/content/download/EN/ep2main/soft/he145_note_e.htm

2. Extract the downloaded **zip file** to hard disk of your PC.

File name UPDATE.HDC

[NOTE]

Spaces and double-byte characters cannot be used for save directory.

Please do not change unzipped folder's name and files inside it.

EasyIPSetupToolPlus (Windows software tool)

[Supported OS] Windows 11, Windows 10

If you are using a Mac, update using a web browser.

1. Download the application file from the following web site.

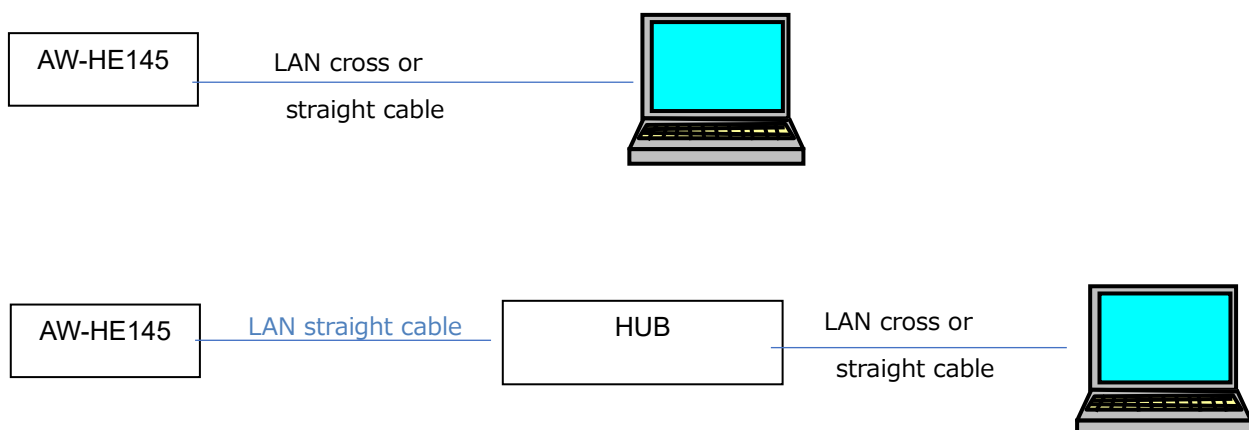
https://eww.pass.panasonic.co.jp/pro-av/support/content/download/EN/ep2main/easyIPplus_e.htm

2. Extract the downloaded zip file, double-click [EasyIPSetupToolPlus.exe] in the folder [DV91000536*] to start "EasyIPSetupToolPlus".

Preparing the network setting

Setup the network setting by using "EasyIPSetupToolPlus". [Network Setting] or [Auto IP]

LAN network example



Select an IP address for the personal computer within the private address range while ensuring that it is different from the address of the unit. Set the subnet mask to the same address as the unit.

Example

AW-HE145	192. 168. 0. 10
PC	192. 168. 0. 100

Setting Initial Account

In the initial state, you need to set up an initial account.

By using “EasyIPSetupToolPlus”

Menu button [Administrator Registration]

Please refer to the EasyIPSetupToolPlus Operation Manual for details.

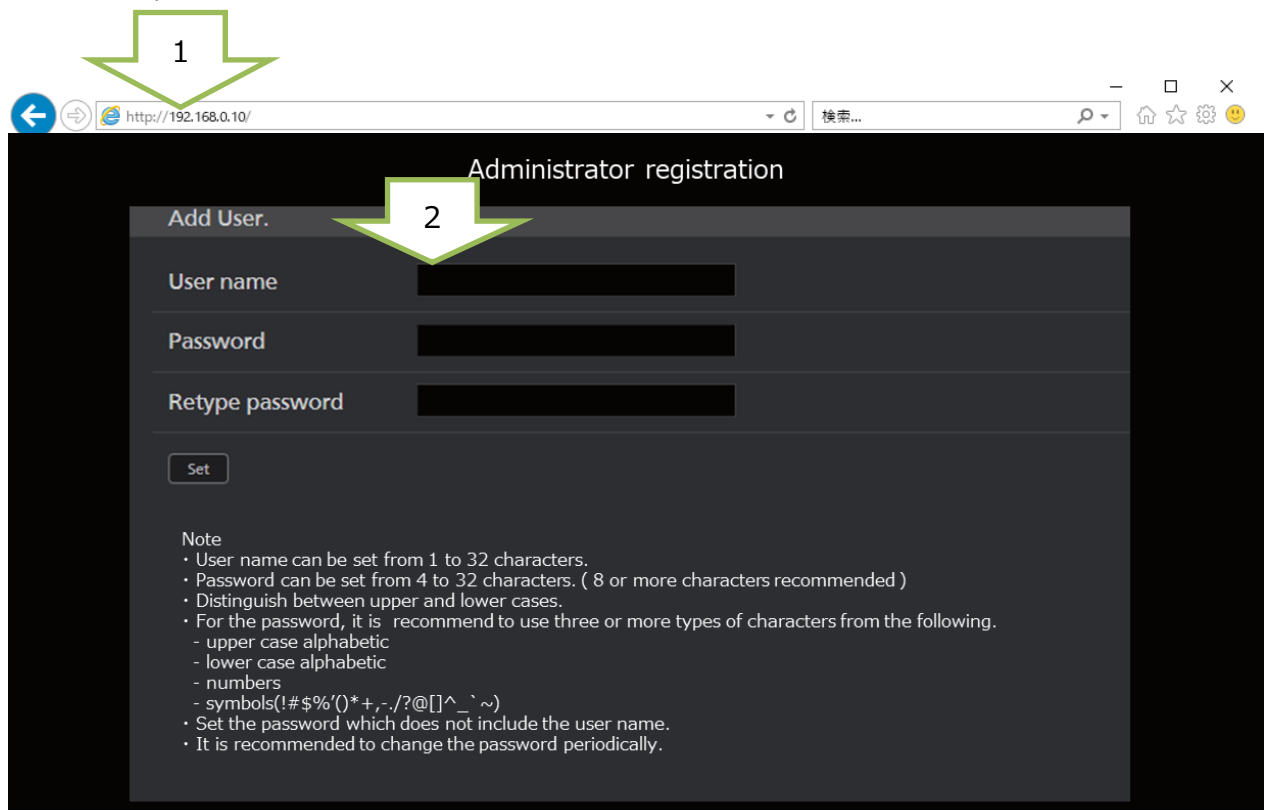
By using WEB Browser

1. Start your web browser and enter the IP address of the PTZ camera in the URL area.

Example : 192.168.0.10

2. Enter the User name and Password to the Administrator registration screen.

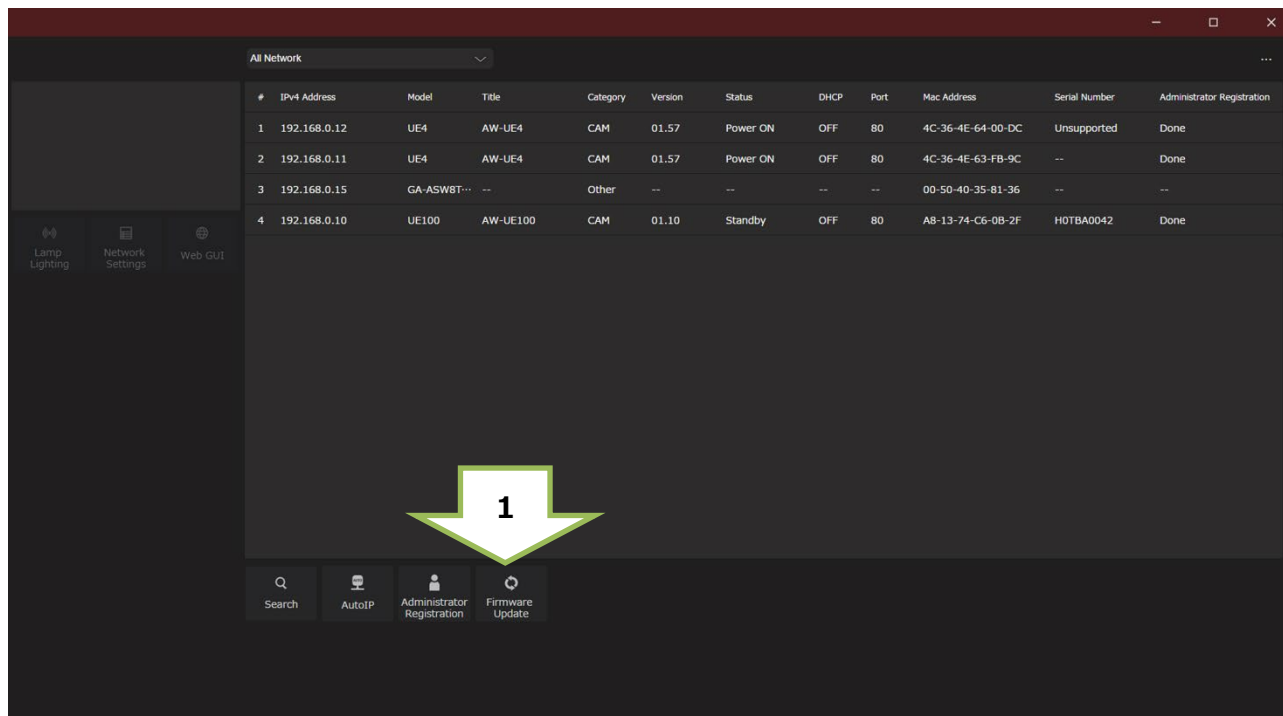
Example User name: admin, Password:12345



Update procedure using EasyIPSetupToolPlus

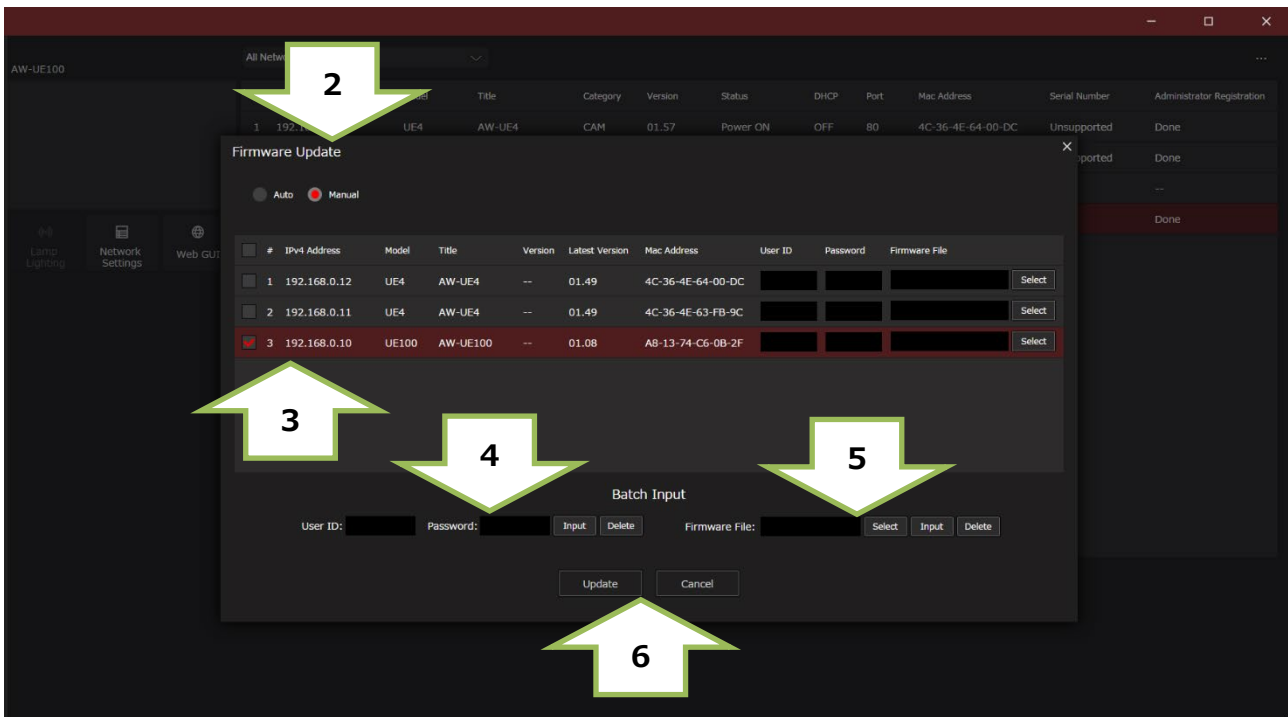
A list of cameras on the network is displayed. You can confirm the camera version here.

1. [Firmware Update]



The screenshot displays the 'All Network' section of the EasyIPSetupToolPlus interface. It features a table with the following columns: #, IPv4 Address, Model, Title, Category, Version, Status, DHCP, Port, Mac Address, Serial Number, and Administrator Registration. The table contains four rows of camera data. Below the table, a green arrow with the number '1' points to the 'Firmware Update' button in the bottom navigation bar.

#	IPv4 Address	Model	Title	Category	Version	Status	DHCP	Port	Mac Address	Serial Number	Administrator Registration
1	192.168.0.12	UE4	AW-UE4	CAM	01.57	Power ON	OFF	80	4C-36-4E-64-00-DC	Unsupported	Done
2	192.168.0.11	UE4	AW-UE4	CAM	01.57	Power ON	OFF	80	4C-36-4E-63-FB-9C	--	Done
3	192.168.0.15	GA-ASW8T...	--	Other	--	--	--	--	00-50-40-35-81-36	--	--
4	192.168.0.10	UE100	AW-UE100	CAM	01.10	Standby	OFF	80	A8-13-74-C6-0B-2F	HOTBA0042	Done



2. [Auto]

If your PC is connected to the internet, the application will identify PTZ cameras that need to be upgraded. In addition, all operations from the download of the firmware file to the version upgrade of the PTZ camera are performed by applications.

[Manual]

You can update using the firmware file downloaded and prepared in advance.

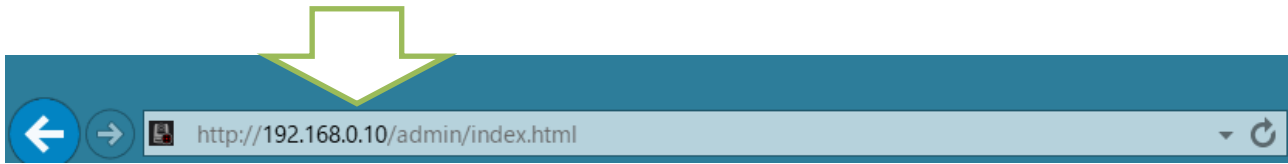
3. Mark the left column of the displayed camera IP address list and select the camera you want to update.
4. [User ID: Password:]
Enter the ID and PW set as the initial account. And push the Input button.
5. [Firmware File:]
In manual mode, specify the downloaded firmware file. And push the Input button.
6. [Update] Push the button to start the update.
Firmware update takes approx.10 min.
Do not power down or disconnect the LAN cable between the PC and Camera while updating.
7. An update completion message will be displayed.
8. The update is completed by the above procedure. Please make sure your version is updated.

Please refer to the EasyIPSetupToolPlus Operation Manual for details.

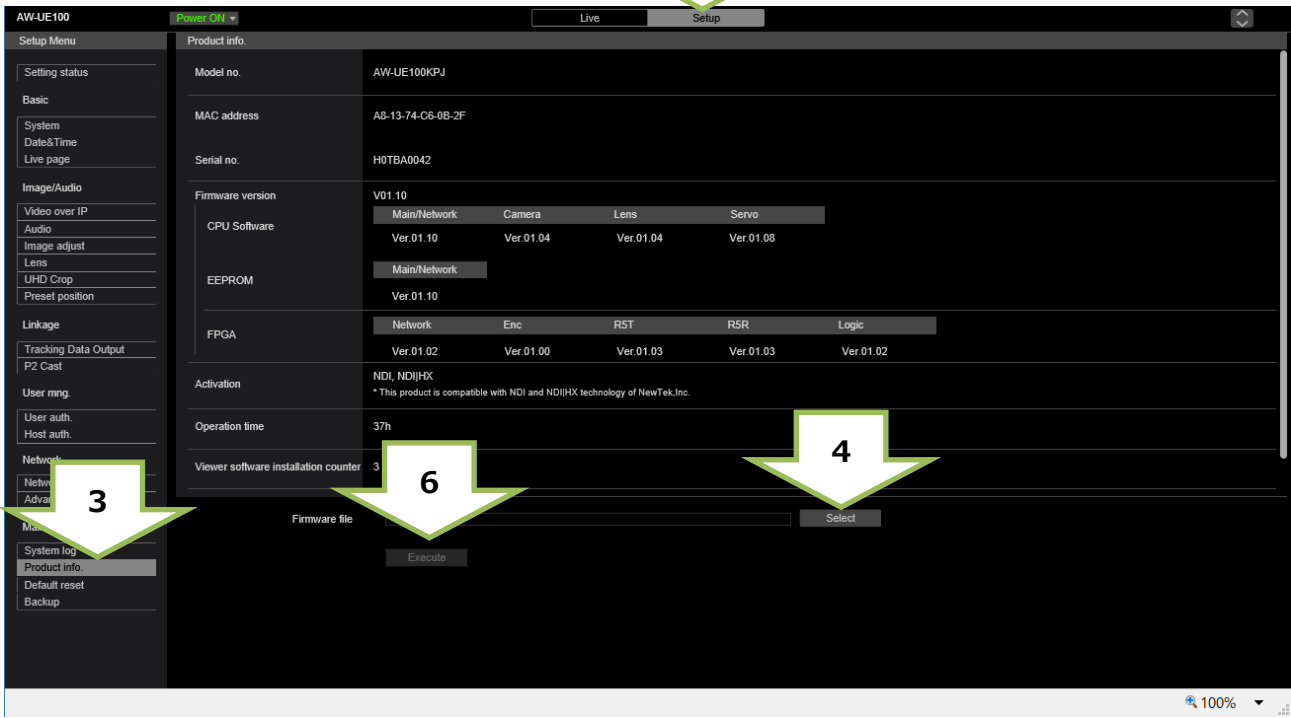
Update procedure using WEB Browser

1. Start your web browser and enter the IP address of the PTZ camera in the URL area.

Example : 192.168.0.10

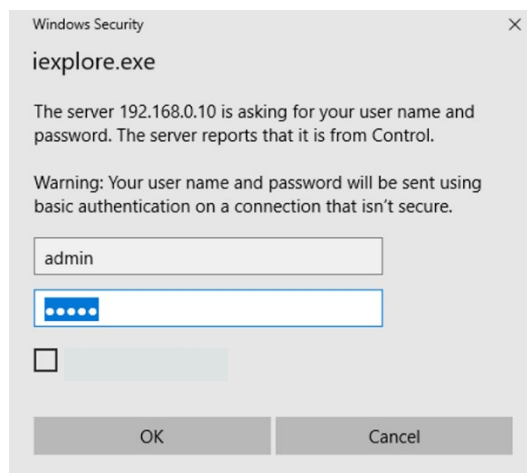
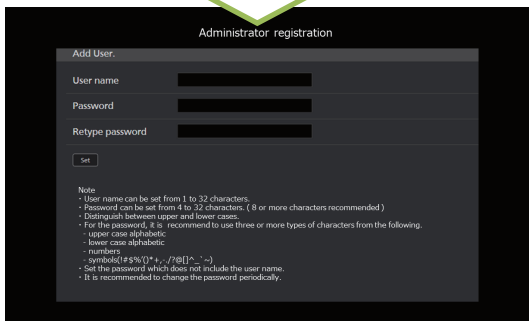


1. [SETUP]



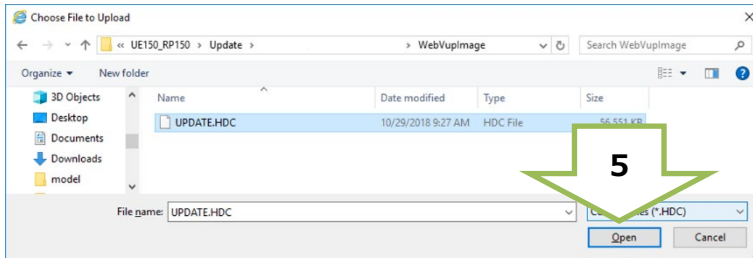
2. Enter the ID and PW set as the initial account.

Example : User name: admin, Password:12345

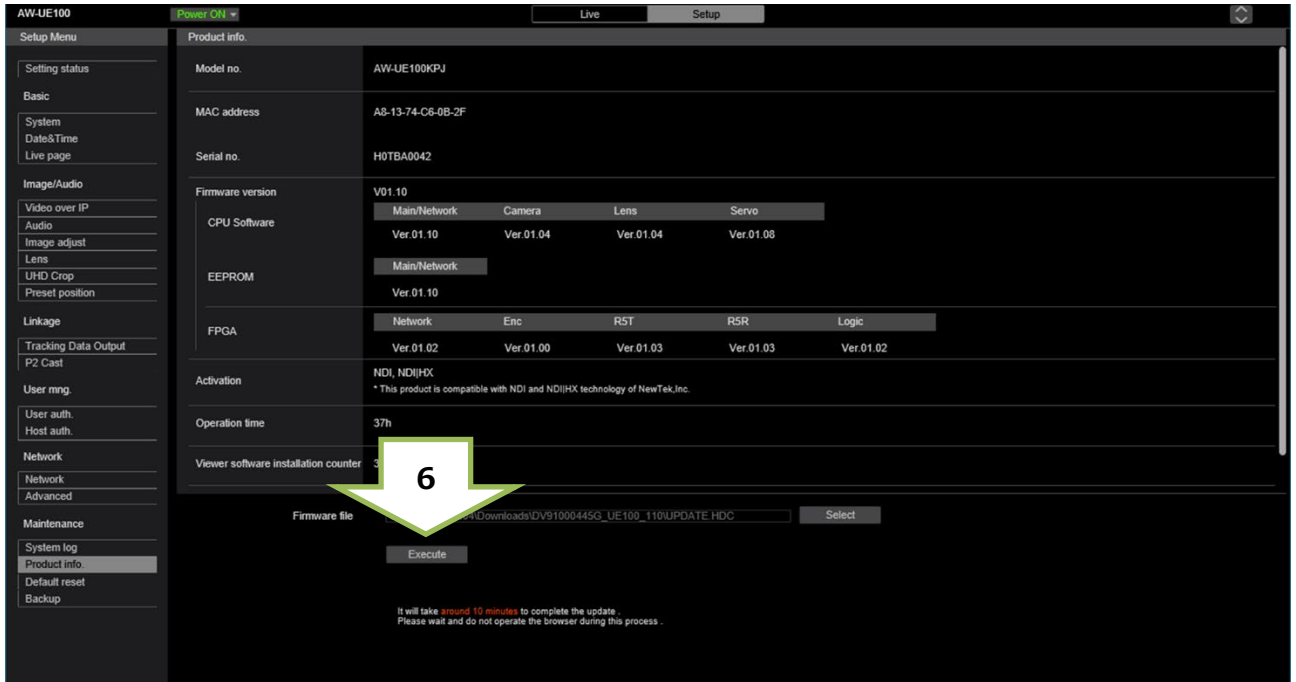


3. [Product Info.] You can confirm the camera version here.
4. [Firmware File:] Push the [Select] button.

- The following screen for selecting a file is displayed. Specify the downloaded firmware file "UPDATE.HDC" and click the [Open] button.



- [Execute] Push the button and push the [OK] button on the confirmation screen to start the update.

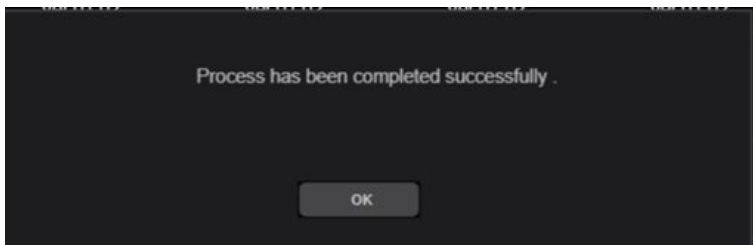


Firmware update takes approx.10 min.

Do not power down or disconnect the LAN cable between the PC and Camera while updating.

Do not perform any other operations until the version is upgraded.

- An update completion message will be displayed. "Process has been completed successfully."



- The update is completed by the above procedure. Press [OK] to restart the camera.

Note

- **Another way to check the version**

The version of firmware is displayed in Firmware Version of camera menu.

(Top Menu → Maintenance → Firmware Version)

### Firmware Version 1/2 ###	
System Version	V01.23
CPU Software	
Main/Network	V01.23
Camera	V01.11
Lens	V01.03
Servo	V01.01
Interface	V01.45
Return	

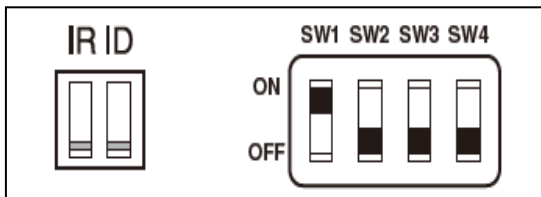
### Firmware Version 2/2 ###	
EEPROM	
Main/Network	V01.00
Interface	V01.02
FPGA	
COM	V01.00
AVIO	V01.00
Return	

- **If you forget your name or password,**

please initialize the setting value (For details, please refer to the instruction manual p16)

It is initialized, when turning on the power with SW1 turned ON

With SW1 turned OFF, please turn on the power again.

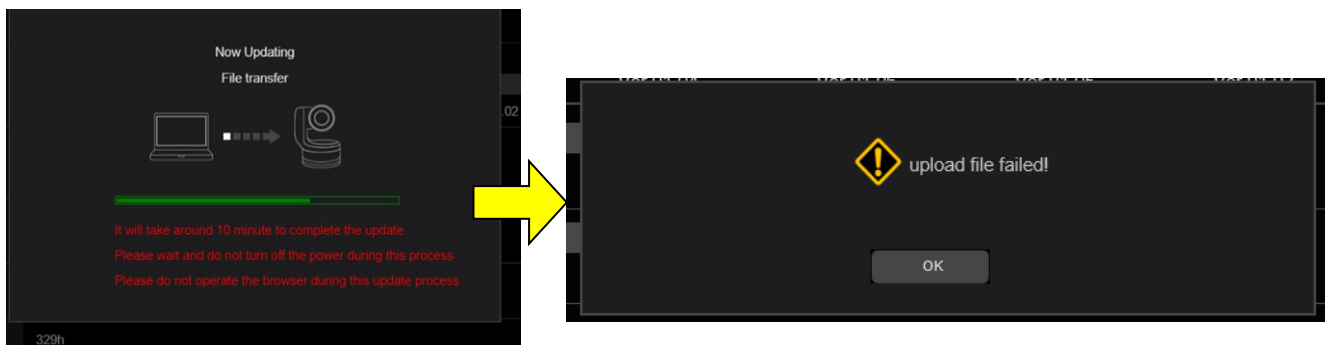


The update was not completed

The power of the camera automatically OFF and ON (The update is continuing). The update is not completed. Do not close the WEB setting screen, and do not turn off the power by mistake after the camera reboot

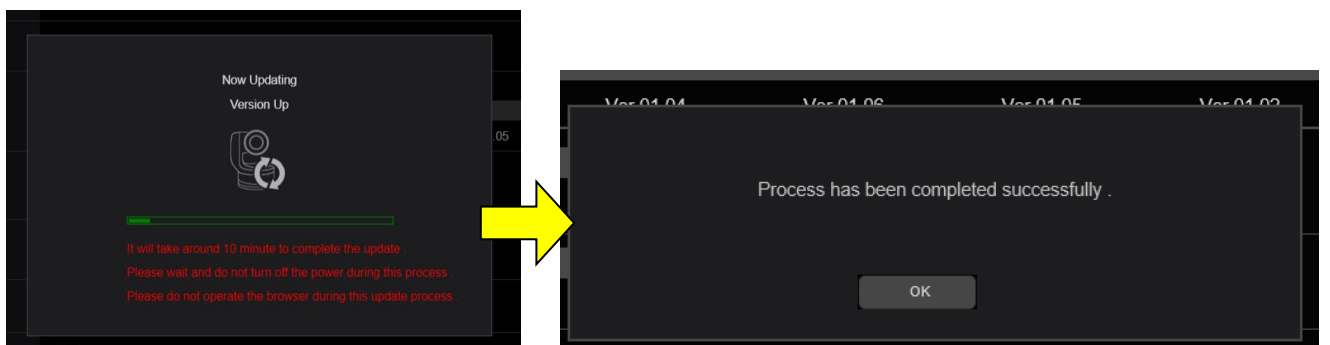
If you disconnected the LAN cable or the power supply from the following screen, please retry.

[Update failed]



If you disconnect the LAN cable or the power supply from the following screen please connect the LAN cable or the power supply again.

[Update succeeded]



- Please reconfirm the network settings, circumstances, ID and password.
- If [Power ON] or [Standby] is selected too quickly, the status selected and the display shown may not correspond. In a case like this, press the [F5] key on the keyboard of the PC to restore the correct status display.