

AW-360B10 (BASE UNIT) Firmware Update

- Updating the firmware of AW-360B10 takes approx. 40 min.

Please use DC power supply so that you can secure enough power, and do not operate the unit while updating the firmware. When the update process is completed, the status indicator will blink in green. So turn off the unit and back on again.

- Do not turn off the power while updating.

【PC - Operating Environment】

CPU	Intel Core 2 Duo 2.4GH or higher
Memory	For Windows 32bit OS: 1GB or more, 64bit OS: 2GB or more For Mac 2GB or more
HDD available capacity	5GB or more
Network function	10BASE-T or 100BASE-TX port x1
OS	• Windows Windows 7 (32bit/64bit) Professional SP1 (Windows XP Compatible Mode cannot be used.) Windows 10 (32bit/64bit) Pro
Browser	Google Chrome
• Mac	macOS 10.12
Browser	Safari 10

1. Downloading the firmware

Download two firmware files via “Service and Support” on the following website.

The amount of two files is approx. 2GB. At least 5 GB of disk space are required on your PC.

Please note that downloading takes quite a lot of time.

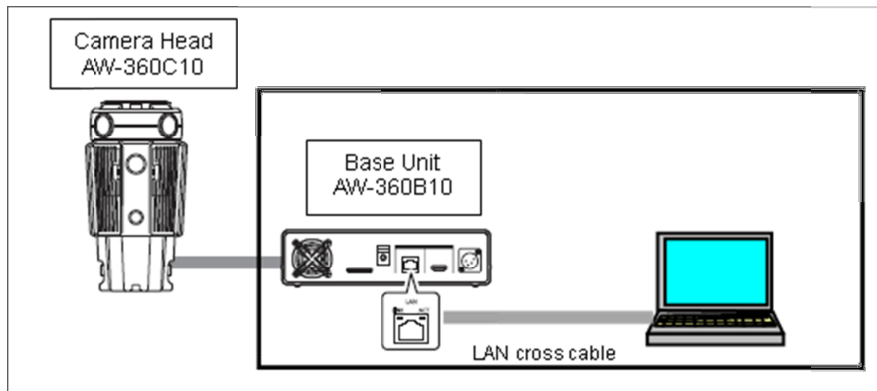
<http://pro-av.panasonic.net/en/>

2. Unzipping the downloaded “****.zip” file

The names of the unzipped files are as follows.

- v***.img.enc.001
- v***.img.enc.002

3. Executing the firmware update



- (1) Turn on the unit with DC power supply for securing enough power.
- (2) Establish a wired LAN connection between the unit and the PC to which the firmware has been downloaded.
- (3) Start up the web browser on the PC and type the IP address of the unit into the browser's address bar. Then press the Enter key.
(URL for IP address by factory default is <http://192.168.0.10/>)
- (4) After the login screen appears, enter the user name and password to display the web screen.
(Default Values)
USER ID: admin
Password: 12345
- (5) Click the Settings button at the top-left corner of the web screen.



(6) Open the product information screen [Product Info.].



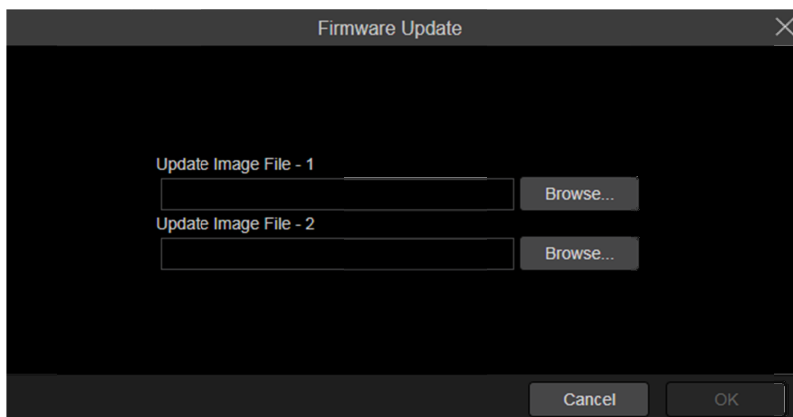
The version number of AW-360B10 firmware will be displayed at ②Firmware Version.

(7) Click the Update button at ②Firmware Version.

(8) Click "Browse..." to select the update files stored on the PC.

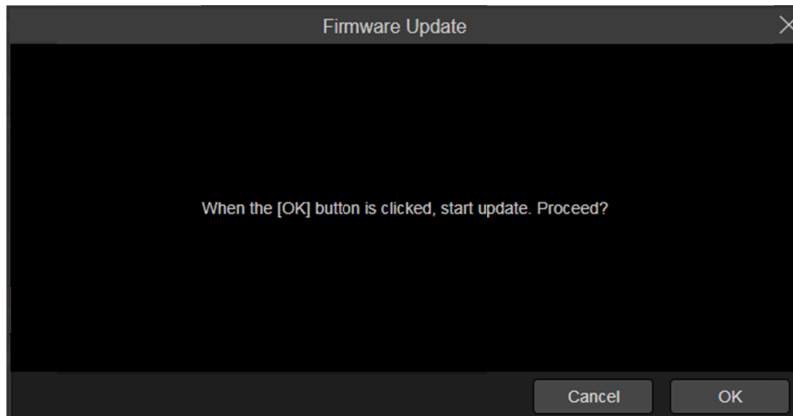
Update Image File-1 : v***.img.enc.001

Update Image File-2 : v***.img.enc.002

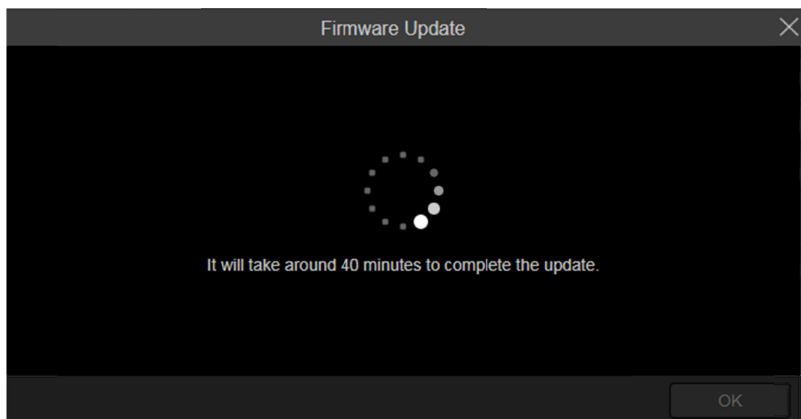


- (9) Click “OK” button to display the screen below.

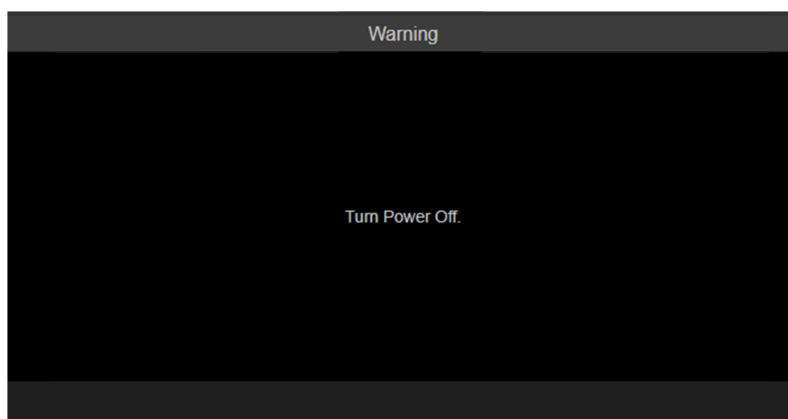
And, once again, click “OK” button to start the update process.



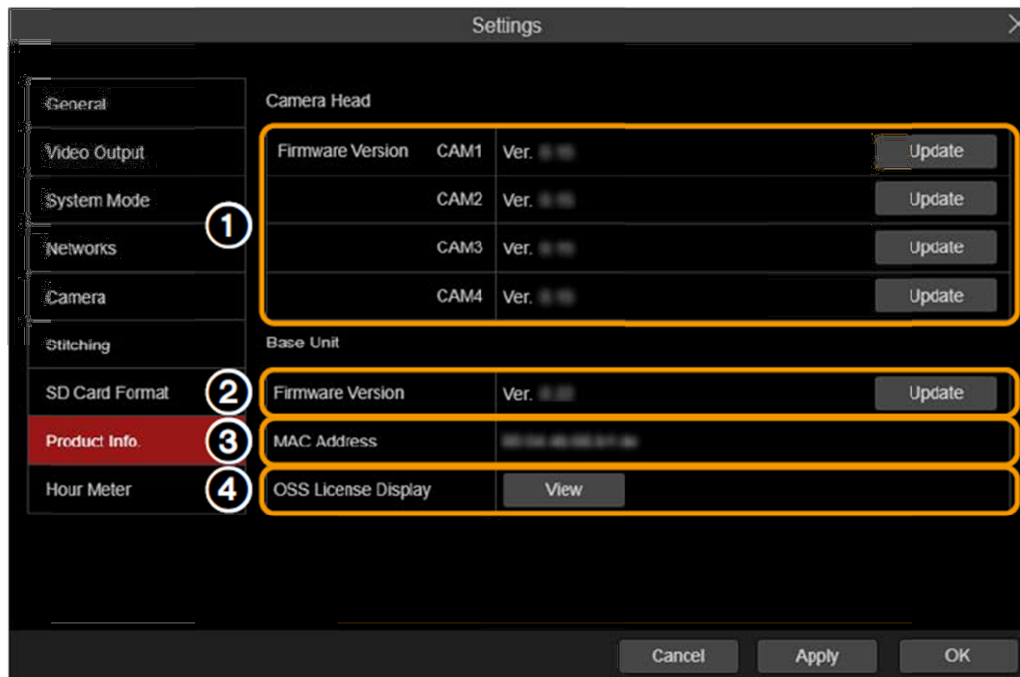
- (10) Updating the firmware takes approx. 40 min. Do not operate the unit while updating.



- (11) When the process is completed, the following screen will be displayed and the status indicator on the unit will blink in green. So press the power button to turn off the unit and back on again.



- (12) On the product information screen [Product Info.] of the web screen, check the version number at ②Firmware Version to confirm whether the firmware is updated correctly.



- (13) When firmware version update has failed, the following message will appears.
 “Failed firmware update. Turn Power Off.”
 After turning off the unit, check the update procedure and perform the update again.