

P2 Viewer Plus  
Installation Procedure

**Revision 1.06 2014.10.15**

Panasonic Corporation

## Trademarks and Registered Trademarks

- Microsoft, Windows 7, Windows 8, Windows 8.1 and Internet Explorer are registered trademarks or trademarks of Microsoft Corporation in the United States, Japan and other countries.
- Intel, Intel Core 2 Duo, Intel Core i7 and Intel Xeon are trademarks or registered trademarks of Intel Corporation or its subsidiaries in the United States and other countries.
- Mac, Macintosh and OS X are trademarks of Apple Inc. registered in the United States and other countries.
- Other various names, company names, product names, etc. mentioned in this document are trademarks or registered trademarks of the respective company. The TM and ® symbols are omitted in this document.

### ■ Information on software for this product

1. This product includes software developed by the OpenSSL Project for use in the OpenSSL Toolkit.  
(<http://www.openssl.org>)
2. This product includes software which is licensed under OpenBSD License.

# 1. Introduction

This manual explains the installation procedure for new P2 Viewer Software that works on Windows PC / Macintosh.

## System Requirements

The following environment is required to use this software:

### **[Clip Management Features, Ingest Functions]**

#### **Hardware**

- CPU
  - AVC-Intra4K 422
    - 30p or lower      Core i7 (6 Core, 3960X or higher)
    - 50p/60p          Core i7 (6 Core, 3960X or higher) and require skip mode
  - AVC-Intra2K 422    2 x Quad Core Xeon, Core i7 965 Extreme Ed. or higher, Core i7 2600 or higher
  - AVC-LongG25 /50    Core i7 (Quad Core, 2720QM or higher)
  - DVCPRO HD          Pentium D (3.2 GHz or faster)
  - AVC-Intra50          Core2 Duo (2.66 GHz or faster)
  - AVC-Intra100        2 x Quad Core Xeon,  
Core i7 965 Extreme Ed. or higher, Core i7 2600 or higher
  - AVCCAM (AVCHD)    Core2 Duo (2.66 GHz or faster)
- Memory
  - 4GB or more (AVC-LongG25 / 50, AVCCAM ), 2GB or more (the other codecs)
- Display
  - 1024 x 768 pixels or more

#### **Windows**

- OS
  - Windows 7 Professional (SP1), Ultimate (SP1) 32 bit / 64 bit
  - Windows 8 32bit/64bit
  - Windows 8.1 32bit/64bit
- Software
  - QuickTime 7.7.4

#### **Macintosh**

- OS
  - Mac OS X 10.7.5 Lion / QuickTime 10.1
  - Mac OS X 10.8.5 Mountain Lion / QuickTime 10.2
  - Mac OS X 10.9 Mavericks / QuickTime 10.3

**<NOTE>**

- To play back clips from P2 cards, the "P2 driver" must already be installed. Download this driver from the Panasonic website for installation.
- Depending on the status of the PC used, dropped frames, black screen/white screen appearance, and audio disruption may occur during playback of content.
- To use this software on Windows, QuickTime must already be installed. Download QuickTime from the Apple Inc. website for installation. Operation of QuickTime version 7.7.4 has been verified.
- To use the software on Windows, set the screen resolution to the standard setting (96 dpi).
- On Windows, the P2 card assigned to drive A or B is not recognized.  
So, do not use drive A or B as the assignment destination of the P2 card.
- Using on multi display mode is not guaranteed.

## 2. Installation

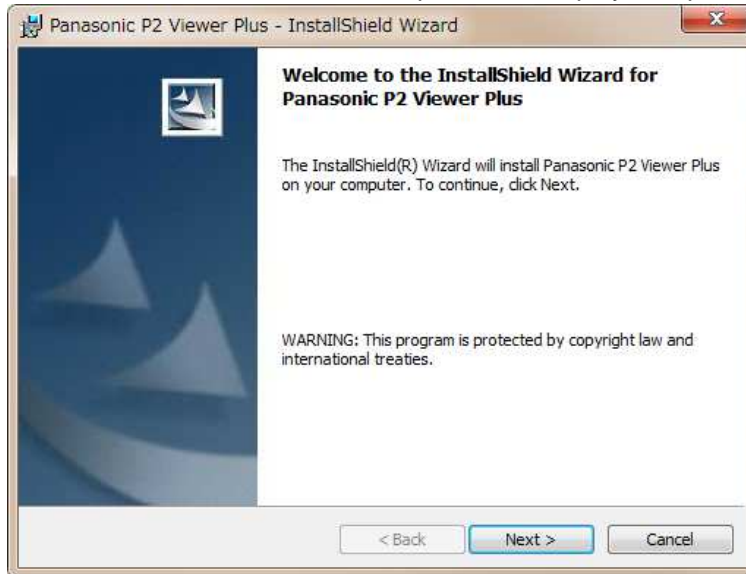
When installing this Software, please refer to Chapter 2.1 for Windows and Chapter 2.2 for Macintosh.

### 2.1. Installation Procedure (for Windows)

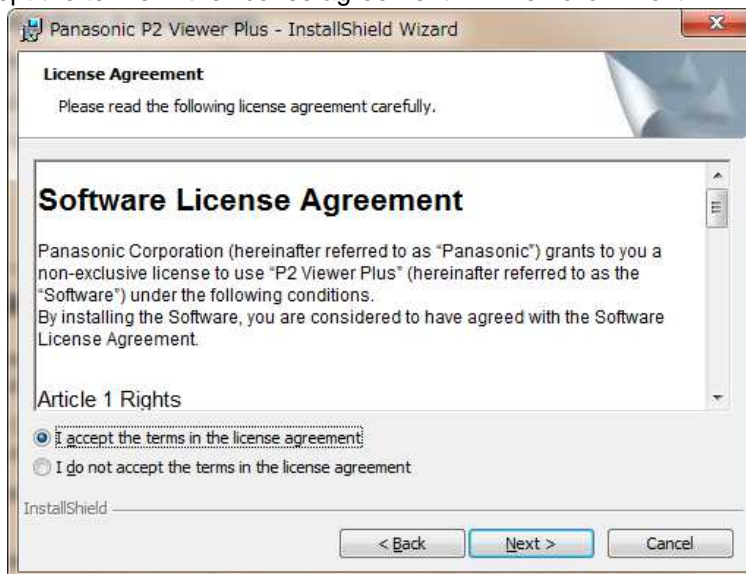
<NOTE>

- Please log in as a user with Administrator rights to install this Software.

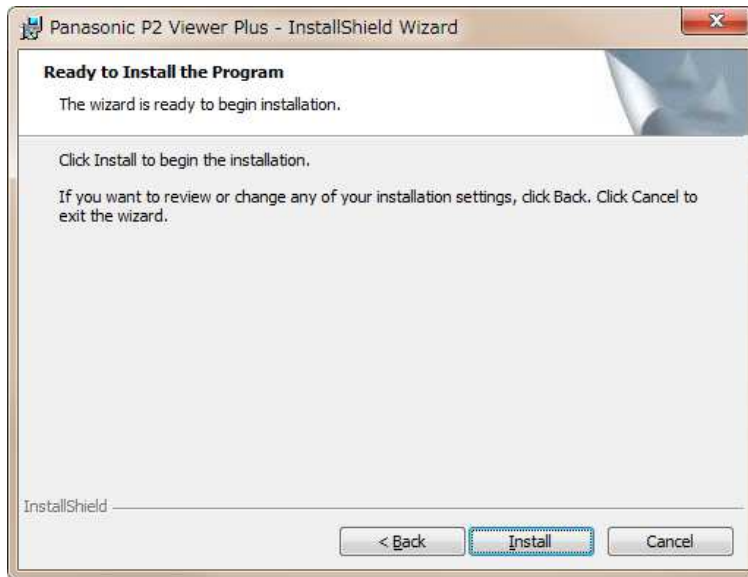
1. Double-click the downloaded file to unzip it and to display Setup.exe.



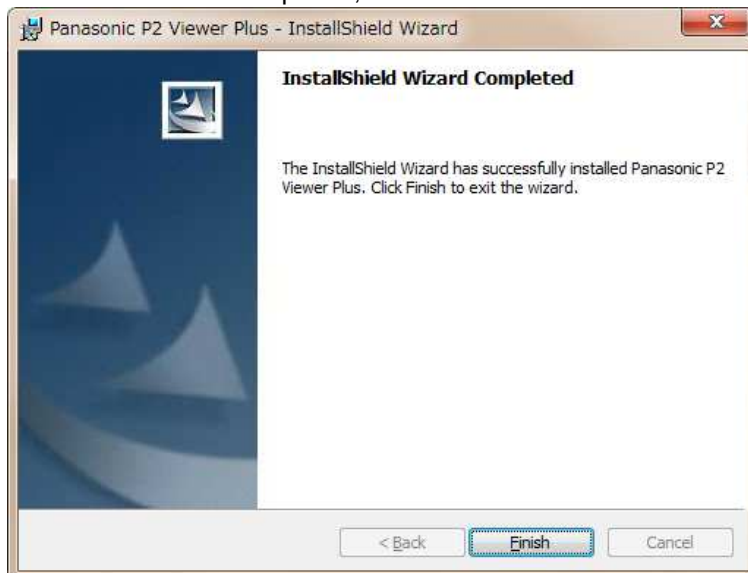
2. Double-click Setup.exe to execute it.  
The introduction screen will be displayed. Then click "Next".
3. The license agreement will be displayed. Read it carefully and, if no problem is found, select "I accept the terms in the license agreement". Then click "Next".



4. The installation start screen will be displayed, so click "Install".



5. When the installation is completed, click the "Finish" button to close the dialog box.



Depending on the environment, a computer restart may be required. In such a case, please restart the computer, and then use this Software.

## 2.2. Installation Procedure (for Macintosh)

<NOTE>

- Please log in as a user with Administrator rights to install this Software.

1. Double-click the downloaded file to unzip it and display the installer icon of P2 Viewer Plus.

### 2. Lion

Double-click the installer icon to execute it.

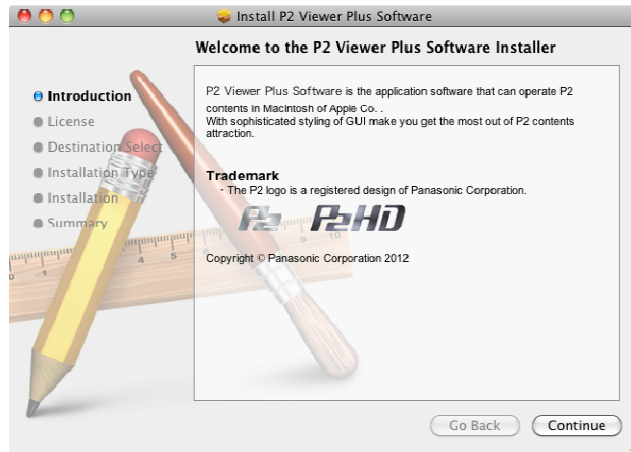
The introduction screen will be displayed. Then click "Continue".

#### Mountain Lion / Mavericks

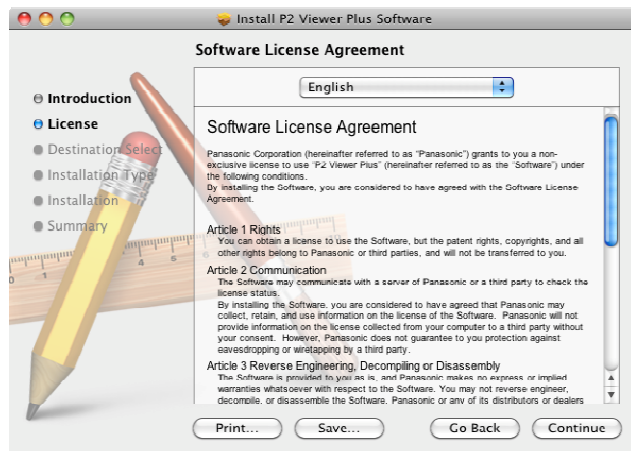
Click the software icon while holding down the "Ctrl" key, and select [Open] on the menu which is displayed.

A confirmation window appears such as the following, so click the [Open] button.

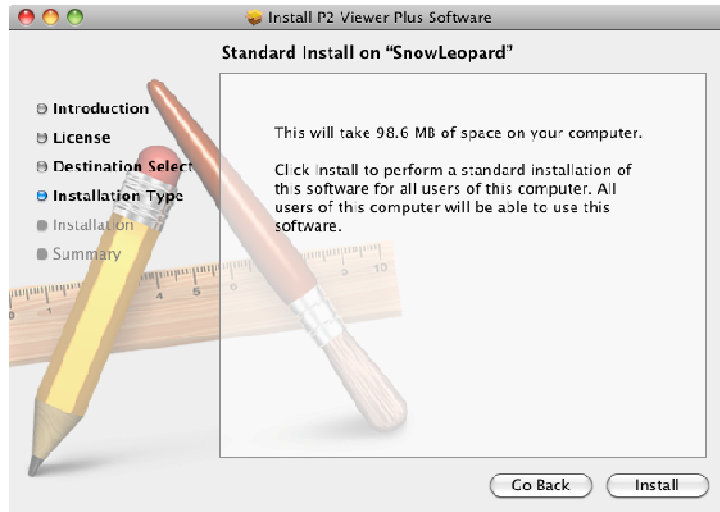
"This software is from an unidentified developer. Are you sure you want to open it?"



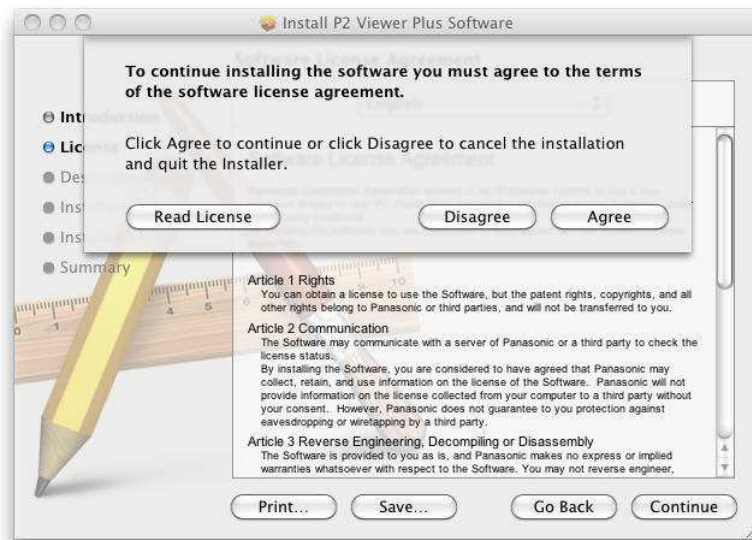
3. The license agreement screen will be displayed. Read it carefully and, if no problem is found, click "Continue".



4. The license agreement confirmation screen will be displayed. Then click "Agree".



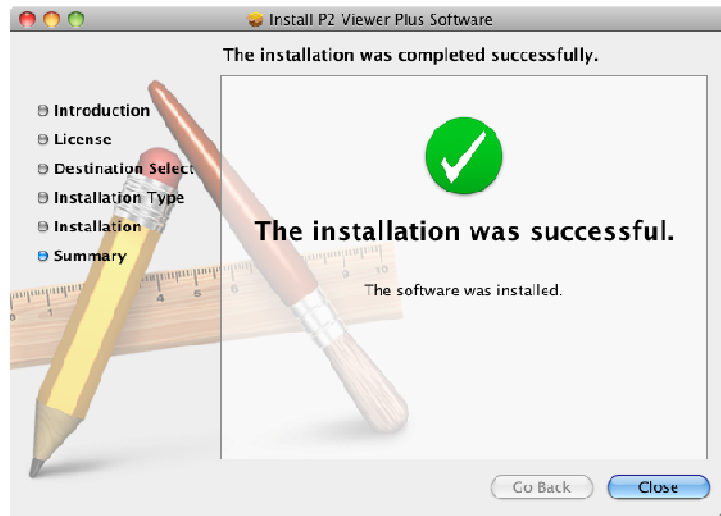
5. The installation confirmation screen will be displayed, so click "Install".





6. The user authentication screen will be displayed. Then enter the password and click “OK”.

7. When the installation is completed, click the “Close” button to close the dialog box.



## **3. Start and Close**

### **3.1. Start the software (for Windows)**

Open the Windows [ Start ] menu and select [ Program ] → [ Panasonic P2 ], and then click [ P2 Viewer Plus ] to start the software.

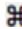
### **3.2. Start the software (for Macintosh)**

Open the Finder and double-click the [ P2 Viewer Plus ] icon in the Applications folder to start the software.

### **3.3. Close the software (for Windows)**

During execution of the application, open the [ File ] from the “main menu” and click [ Exit P2 Viewer Plus ] to close the software. (Same result by the X button in the upper right corner)

### **3.4. Close the software (for Macintosh)**

During execution of the application, select [ P2 Viewer Plus ] from the “main menu” and click [ Exit P2 Viewer ] to close the software. (Same result by +Q)

## **4. Operating Instructions**

Operating Instructions for this Software is provided in a help file format. It is displayed on this software.

Select "Help" from "Help" on the main menu of this Software. Operating Instructions will be displayed on the Web browser.