
*PTZ Virtual USB Driver
Installation Procedures*

Table of Contents

TABLE OF CONTENTS 2

INTRODUCTION 3

 OPERATING ENVIRONMENT 3

 ABOUT THE DESCRIPTIONS IN THIS FILE 4

 ABOUT REGISTRATION AND REGISTERED TRADEMARKS 4

INSTALLATION OF THE SOFTWARE 5

 INSTALLING THE SOFTWARE 5

STARTING AND CLOSING THE SOFTWARE 8

VIEWING THE OPERATION MANUAL 9

INITIAL SETTINGS 9

Introduction

PTZ Virtual USB Driver is a software program that runs on Windows.

By running this software on a Windows computer, you can let Windows recognize the Panasonic camera connected to the computer on network (hereinafter referred to as the “Network Camera”) as the virtual USB camera, and you can use this camera.

Operating Environment

The following environment is required for using this software.

● OS

Windows 7 32bit/64bit

Windows 8.1 32bit/64bit

Windows 10 32bit/64bit

● PC

CPU: Core i5-7300U (2.60 GHz) and above

Memory: 4GB and above

The following cameras are supported by this software.

● Panasonic Network supported cameras

PTZ camera

- AW-UE150/155
- AW-HE130/AW-HN130
- AW-HR140
- AW-UE70/AW-UN70
- AW-HE40/70/65, AW-HN40/70/65

POVCAM

- AG-UMR20/AG-UCK20
- AG-MDR25/AG-MDC20

<Note>

- Please update the firmware to the latest version before using the camera. You may download the firmware from the following website.

<http://pro-av.panasonic.net/en/>

About the Descriptions in this File

- The illustrations and screen displays in this file may be different from those in reality.
- In this file, a personal computer is mentioned as a “PC”.

About Registration and Registered Trademarks

- Microsoft, Windows, and Internet Explorer are registered trademarks of Microsoft Corporation in the United States.
- Intel, Intel Core i7, and Intel Xeon are trademarks or registered trademarks of Intel Corporation or its subsidiaries in the United States and other countries.
- All other names, company names, and product names are trademarks or registered trademarks of each company. TM and the ® mark are not specified in this manual.

Installation of the Software

Install this software according to the operation described below.

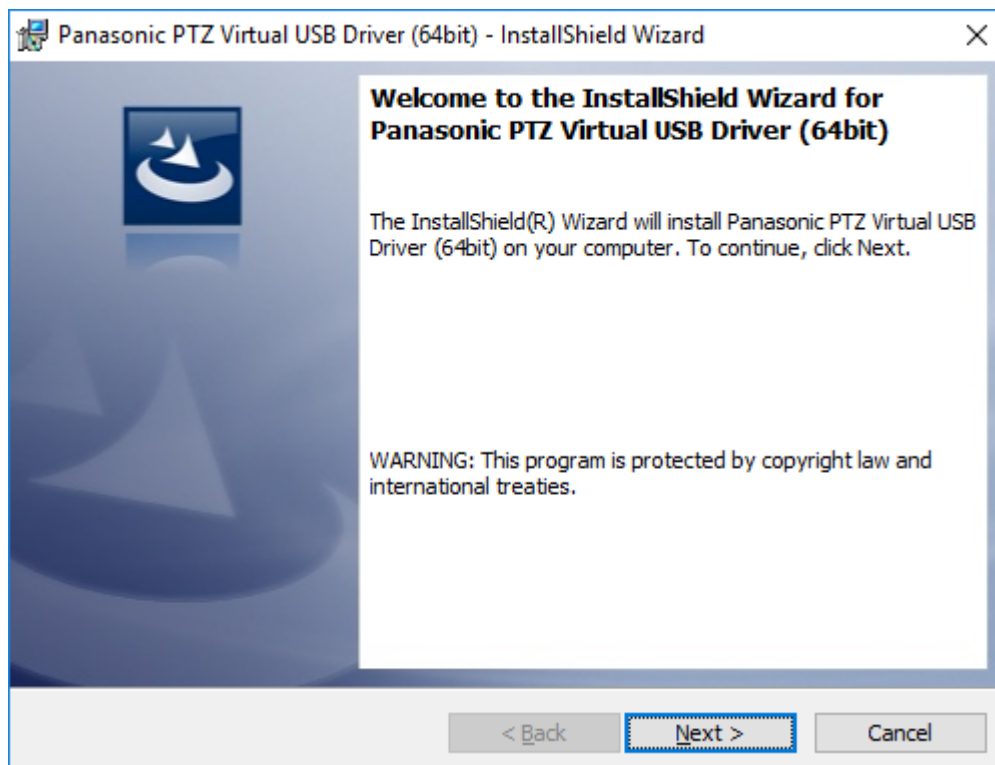
This software has 32 bit version and 64 bit version. Please install 32bit version when using 32bit OS and 64bit version when using 64bit OS. The installation procedure is the same for 32 bit version and 64 bit version.

<Notes>

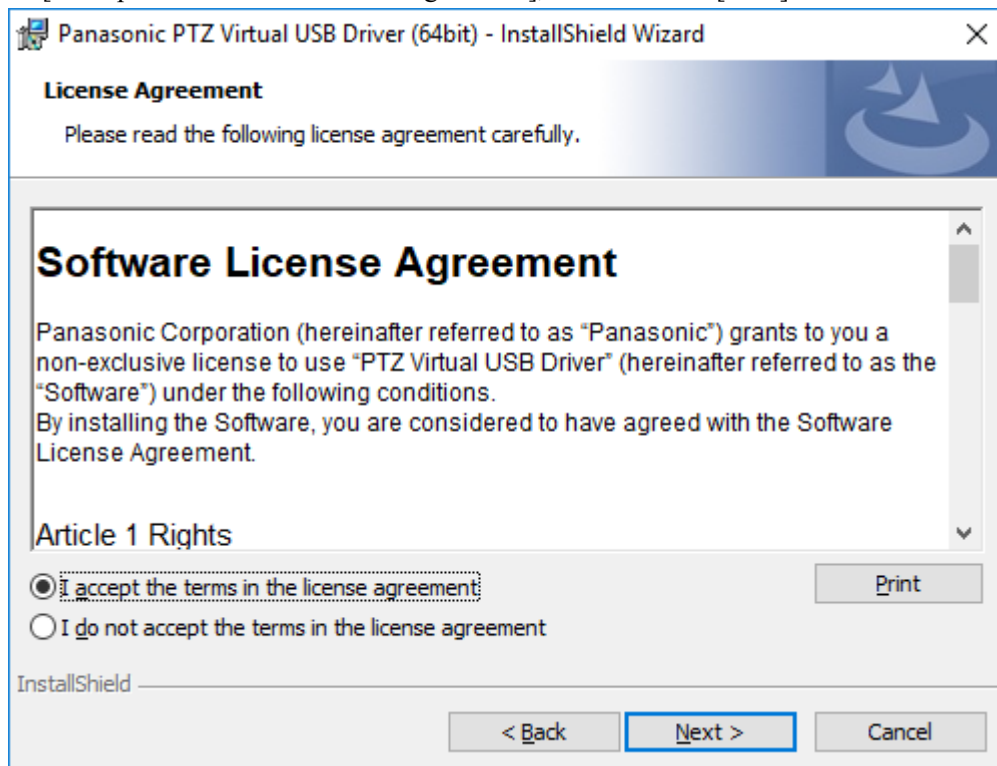
- To install the software, log in as a user having the Administrator authority.
- Please continue with the process by clicking [Yes] when the confirmation of the user account control is displayed during installation.

Installing the Software

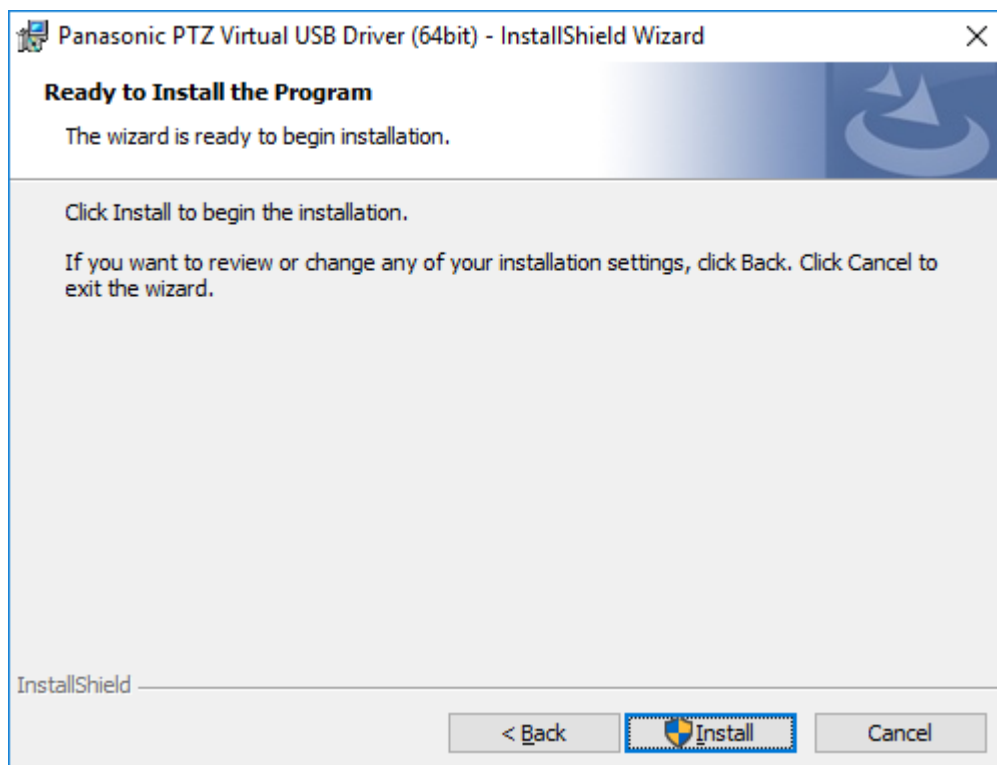
1. Double-click Setup.exe to run the installer.
2. Click the [Next] button to continue with the process.



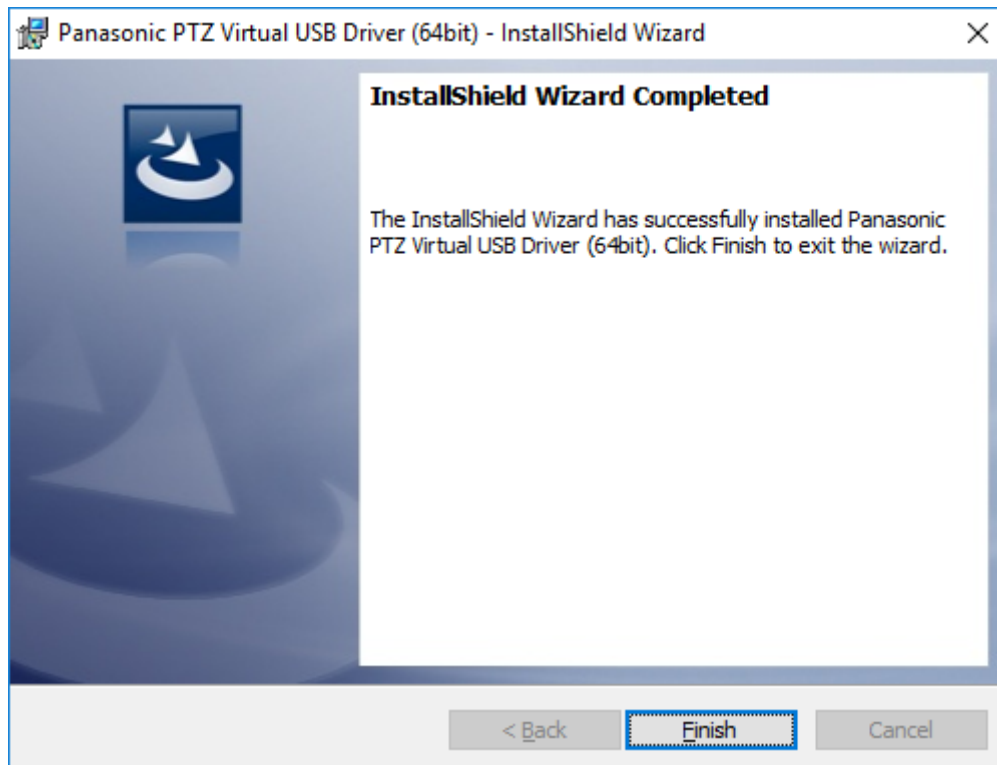
3. The Software License Agreement appears. Check the content, and if there is no problem, select [I accept the terms in the license agreement], and then click [Next].



4. The screen for starting installation appears. Click [Install].



5. Click [Finish] to close the dialog box.



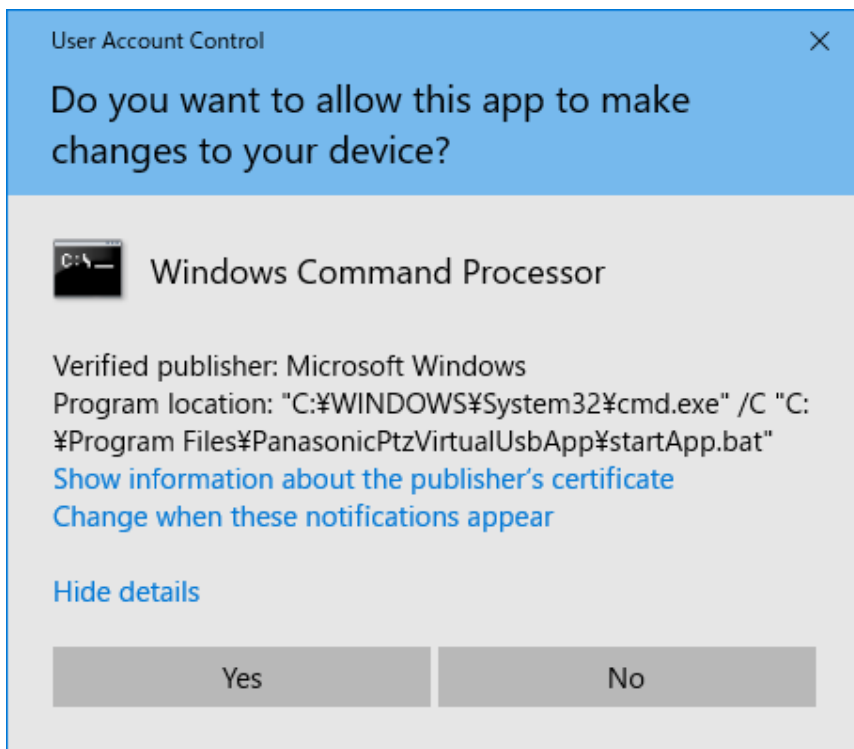
6. This completes the installation process.

Starting and closing the software

Starting the software

The software will automatically start after you login to Windows.

When you start the software, if the screen asking for permission to run the software appear, select [Yes].



Closing the software

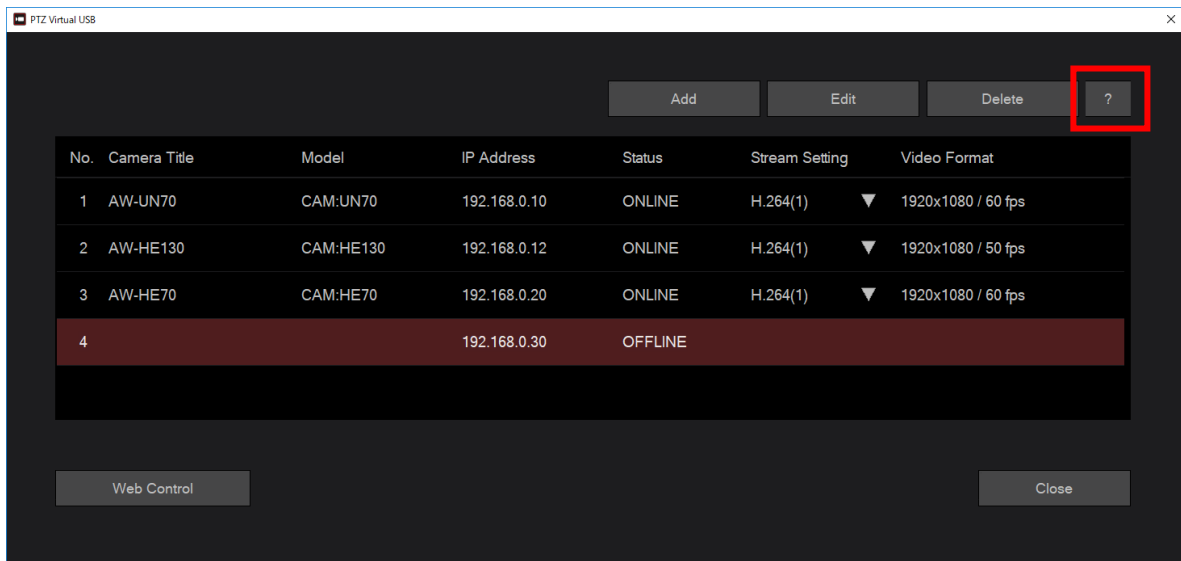
This software resides and runs on Windows. Therefore, it will continue running even after closing the Main screen.

If you want to completely end the software, terminate the "PanasonicPtzVirtualUsbApp" process in the Task Manager of Windows.

Viewing the Operation Manual

The operation manual of this software is provided in the help file format in the application.

Click the ? button at the top right of the screen to view the operation manual of this software.



Initial Settings

If necessary, make the initial settings before using this software.

For details, refer to the “Initial settings of the camera” section of the operation manual.