
PTZ Control Center Installation Procedures

Table of Contents

TABLE OF CONTENTS..... 2

INTRODUCTION..... 3

 OPERATING ENVIRONMENT 3

 ABOUT THE DESCRIPTIONS IN THIS FILE 4

 ABOUT REGISTRATION AND REGISTERED TRADEMARKS 4

INSTALLATION OF THE SOFTWARE..... 5

 INSTALLING THE SOFTWARE 5

ADMINISTRATOR SETTINGS 8

 USER ACCOUNT SETTINGS..... 8

OTHER INITIAL SETTINGS..... 11

LOGGING IN TO APPLICATIONS..... 12

 EASY LOG IN FUNCTION.....12

VIEWING THE OPERATION MANUAL 14

Introduction

PTZ Control Center is an application software that runs on Windows.

By running this software on a Windows PC, you can remotely operate the Panasonic cameras present on the network in a very easy manner.

This manual describes the installation procedures and setting methods of this software.

Operating Environment

The following environment is required for using this software.

● OS

Windows 8.1 64bit

Windows 10 64bit

● PC

CPU: Core i5-2520M 2.50GHz and above

Memory: 4GB and above

Display: 1280 x 960 and above (1920 x 1080 and above is recommended)

The following cameras are supported by this software (As of June 2021).

* For the latest support models, please check the PTZ Control Center product page on the following website.

<https://pro-av.panasonic.net/en/>

● Panasonic Network supported cameras

PTZ camera

- AW-UE150/155
- AW-UE100
- AW-HE130/AW-HN130
- AW-HR140
- AW-UE70/AW-UN70
- AW-HE40/70/65, AW-HN40/70/65
- AW-HE42/68/75
- AW-UE4

Control Assist Camera

- AW-HEA10

POVCAM

- AG-UMR20/AG-UCK20
- AG-MDR25/AG-MDC20

<Note>

- Please update the firmware to the latest version before using the camera. You may download the firmware from the following website.

<http://pro-av.panasonic.net/en/>

About the Descriptions in this File

- The illustrations and screen displays in this file may be different from those in reality.
- In this file, a personal computer is mentioned as a “PC”.

About Registration and Registered Trademarks

- Microsoft, Windows, and Internet Explorer are registered trademarks of Microsoft Corporation in the United States.
- Intel, Intel Core i7, and Intel Xeon are trademarks or registered trademarks of Intel Corporation or its subsidiaries in the United States and other countries.
- All other names, company names, and product names are trademarks or registered trademarks of each company. TM and the ® mark are not specified in this manual.

Installation of the Software

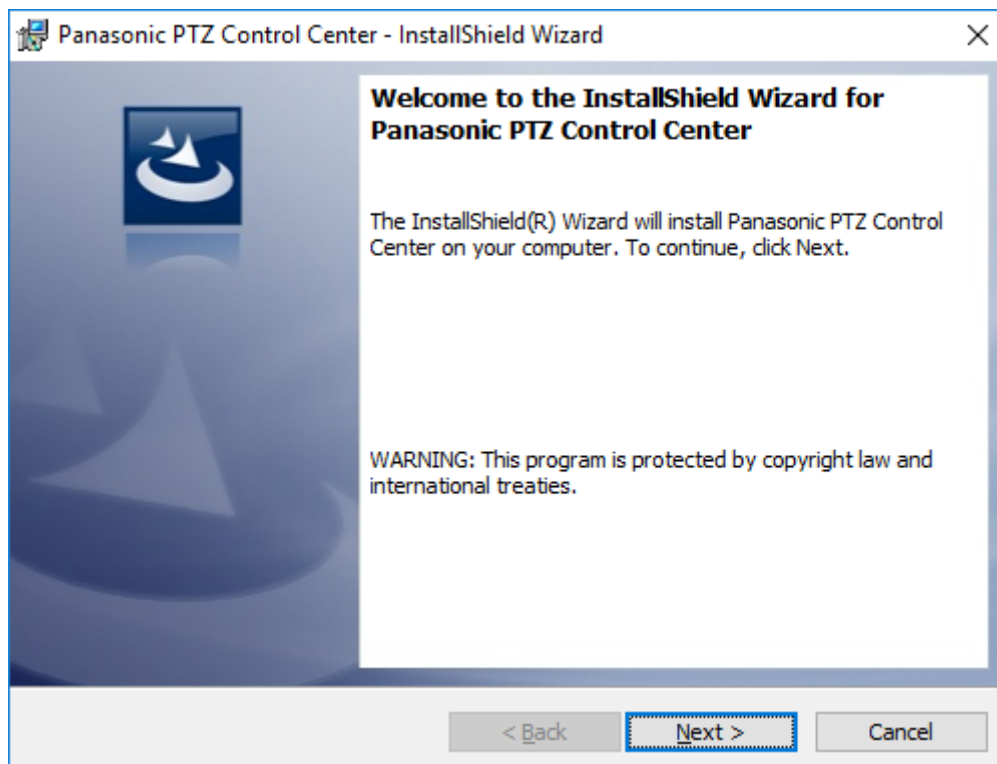
Install this software according to the operation described below.

<Notes>

- To install the software, log in as a user having the Administrator authority.
- Please continue with the process by clicking [Yes] when the confirmation of the user account control is displayed during installation.

Installing the Software

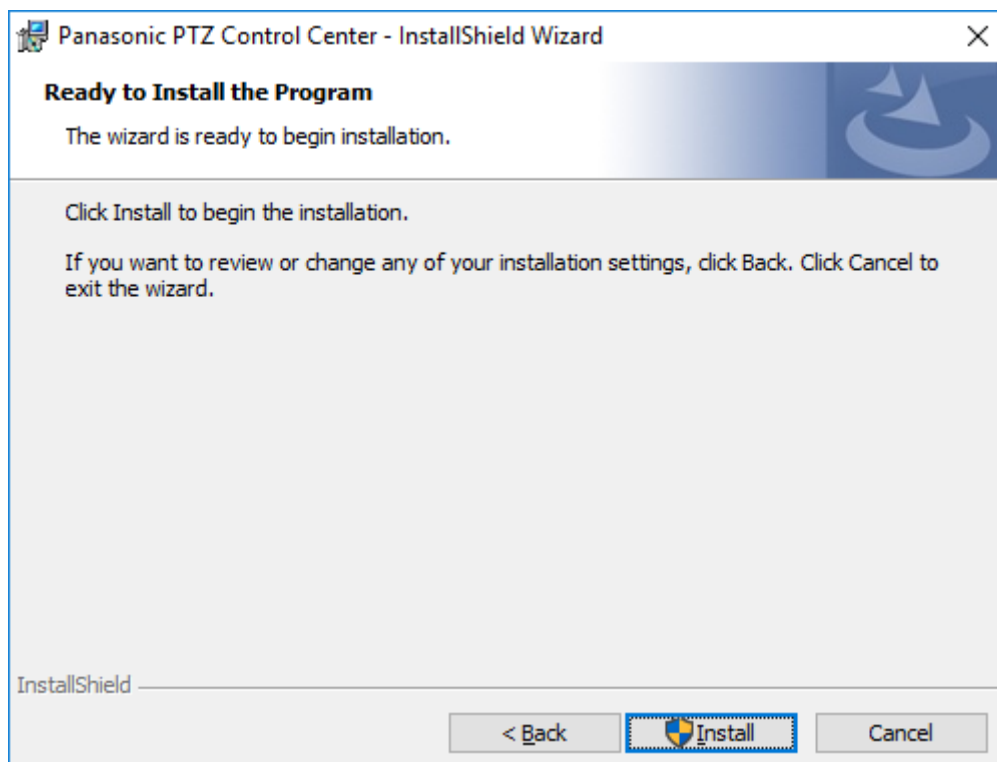
1. Double-click Setup.exe to run the installer.
2. Click the [Next] button to continue with the process.



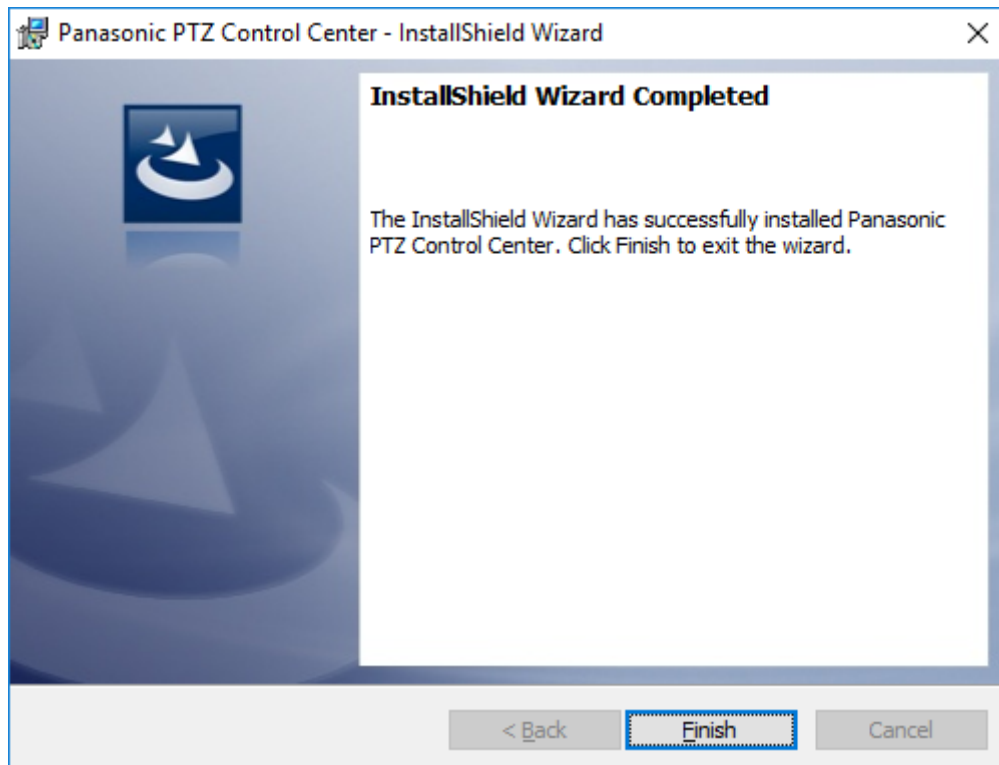
3. The Software License Agreement appears. Check the content, and if there is no problem, select [I accept the terms in the license agreement], and then click [Next].



4. The screen for starting installation appears. Click [Install].



5. Click [Finish] to close the dialog box.



6. This completes the installation process.

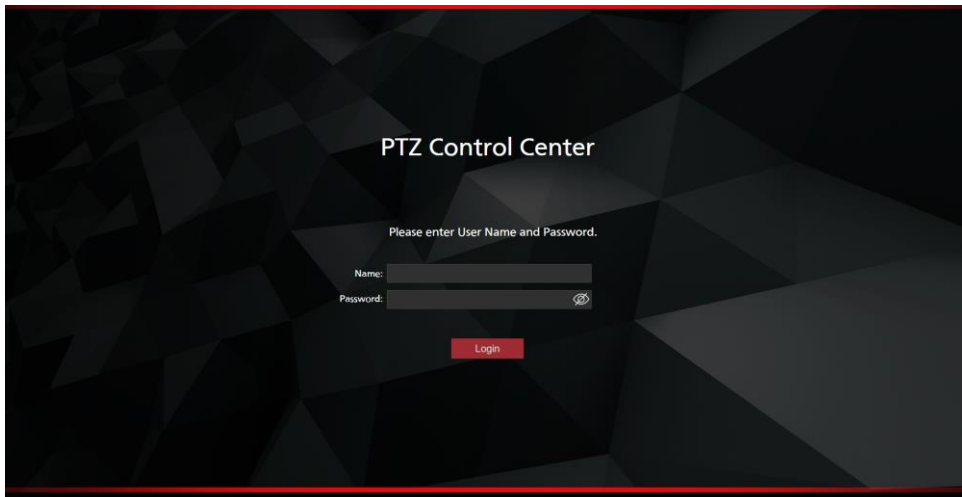
Administrator Settings

Please make the following settings after installing this software.

User account settings

Please set the user account before using the software.

1. From the Windows menu, click [Start] -> [Panasonic Corporation] -> [PTZ Control Center] to start the software.
2. The Login screen of this software appears.



<Notes>

- The Windows Firewall warning screen may be displayed at the first startup after installing this software.

When the warning screen is displayed, please permit communication of all networks of Domain / Private / Public network.

3. Enter the following user name and password in the Name and Password boxes, respectively, and then click the [Login] button.

User name: Admin

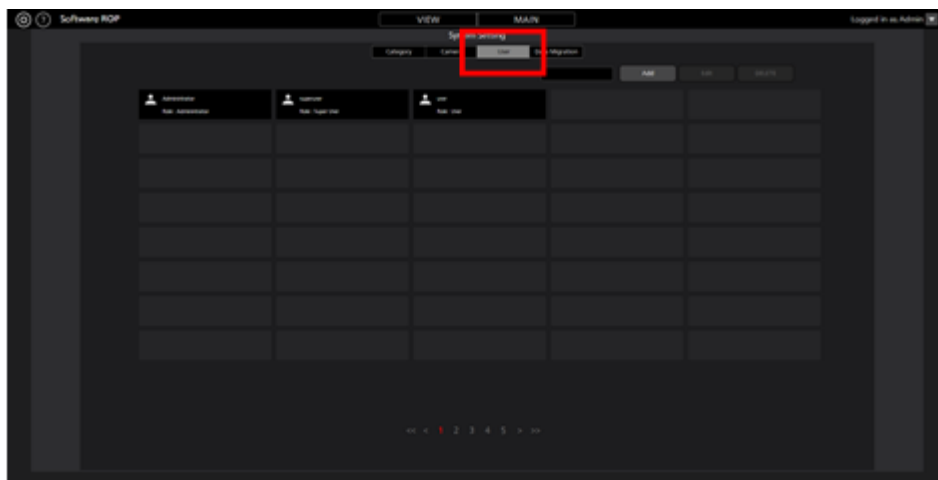
Password: Admin

4. If login is successful, the VIEW screen of this software will be displayed.

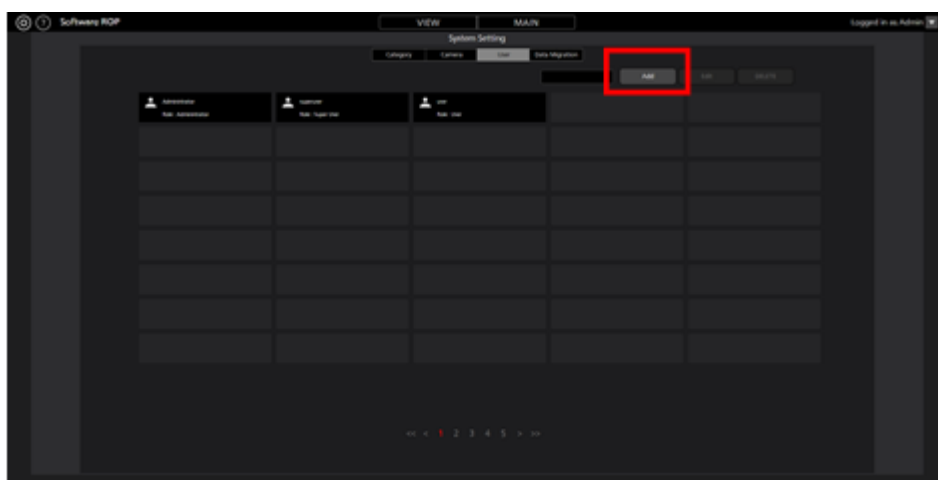
5. Click the Settings button located at the top left of the screen.



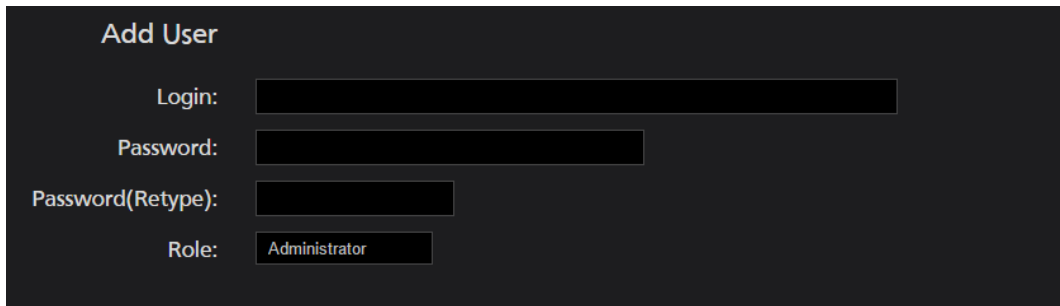
6. Click the User tab at the center of the Settings screen.



7. Click the Add button and go to the Register User screen.



8. On the Register User screen, enter the information of the user account to be registered.



Login: User account name

Password: Password

Password (Retype): Password (for confirmation)

Role: Account's privilege. You can select from the following three types.

Administrator:

Access to cameras: It can access all cameras.

Camera operation: It can perform all operations.

Settings on the Setting screen: It can make all settings.

Super User:

Access to cameras: It can access all cameras.

Camera operation: It can perform all operations.

Settings on the Setting screen: It can only make Category settings. It cannot access any other settings.

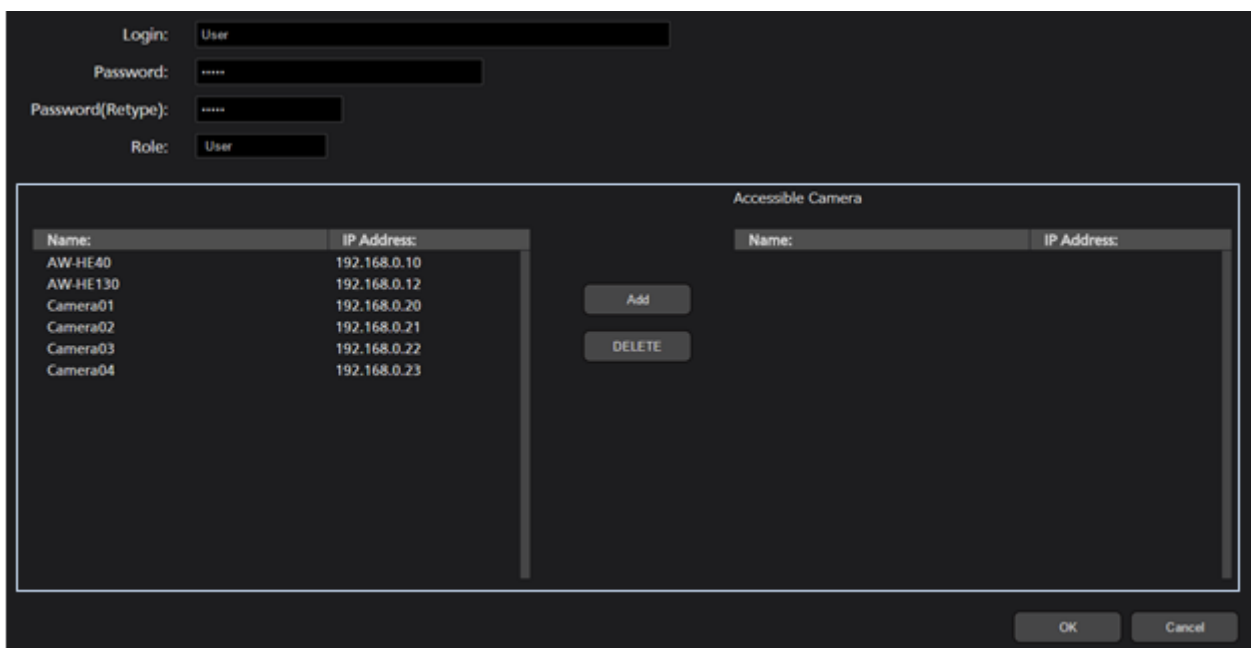
User:

Access to cameras: It can access only the permitted cameras.

Camera operation: Restricted (image quality adjustment, preset registration/deletion are not allowed).

Settings on the Setting screen: Not allowed to access the Setting screen.

9. When User is selected in Role of the user account, access permission setting areas (blue frame in the following figure) of the camera will appear at the bottom of the Register User screen. Here, you can set the cameras that the user is allowed to access.



Name:	IP Address:
AW-HE40	192.168.0.10
AW-HE130	192.168.0.12
Camera01	192.168.0.20
Camera02	192.168.0.21
Camera03	192.168.0.22
Camera04	192.168.0.23

Name:	IP Address:
-------	-------------

- (1) List of the cameras registered at present would appear in the list on the left side of the setting area. Select the cameras to which you want to allow the access.
 - (2) Clicking the Add button at the center of the setting area will move the camera selected in step (1) to the list on the right side of the setting area.
When the user subjected to registration at present has logged in, only those cameras that are there in the list on the right side of the setting area will appear in the list of cameras on the View/Main screen.
 - (3) When deleting the cameras to which you had allowed the access, select the cameras from the list on the right side of the setting area and click the DELETE button in the center of the setting area.
10. Click the OK button to come out of the Register User screen.
 11. With this, the setting is complete.

<Note>

- For the details of the functions that the respective user privilege can use, refer to "Appendix - List of restrictions for each account privilege" in the operation manual.

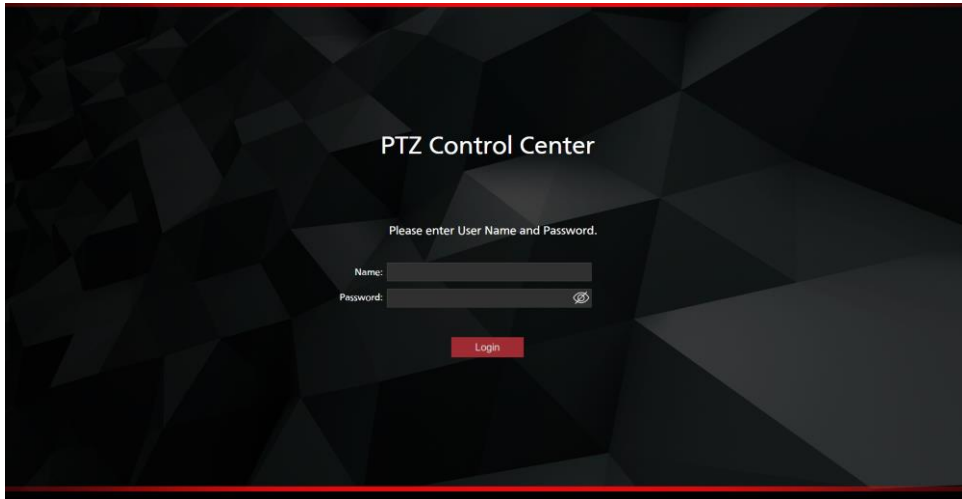
Other Initial Settings

For initial settings other than the user account, refer to the "Default Setting" item in the operation manual.

Logging in to Applications

The procedure from logging in to this software until the start of operations is described below.

1. From the Windows menu, click [Start] -> [Panasonic Corporation] -> [PTZ Control Center] to start the software.
2. The Login screen of this software appears.



3. Enter the user name and password in the Name and Password boxes, respectively, and then click the [Login] button.
4. If login is successful, the VIEW screen of this software will be displayed.

Easy log in function

A user having the user authority can log in to the software without entering username and password. Configure the software in advance by following the procedure described below.

1. Create a shortcut of the following file.

Right-click the following file, select "Create shortcut", and save the shortcut to the desired location.

In case of 32bit OS :

C:\Program Files\Panasonic\PtzControlCenter\PTZControlCenter.exe

In case of 64bit OS :

C:\Program Files (x86)\Panasonic\PtzControlCenter\PTZControlCenter.exe

2. Open property of the shortcut created in the above procedure.
3. Enter username and password after the path address of PTZControlCenter.exe described in the target line on the shortcut tab. Place spaces before and after user name and password.

- Examples when user name is set as "username" and password as "password";

In case of 32bit OS :

"C:\Program Files\Panasonic\PtzControlCenter\PTZControlCenter.exe" **username password**

In case of 64bit OS :

"C:\Program Files (x86)\Panasonic\PtzControlCenter\

PTZControlCenter.exe" **username password**


4. Close property of the shortcut by clicking OK

5. Double-click the shortcut. After the log in page shows up, login in is automatically completed.

Viewing the Operation Manual

The operation manual of this software is provided in the help file format in the application.

The procedure of viewing the operation manual is described below.

1. Log in to this application according to the procedure described in “Logging to the Application” on the previous page.
2. Click the  button at the top left of the screen to view the operation manual of this software.

