

Panasonic

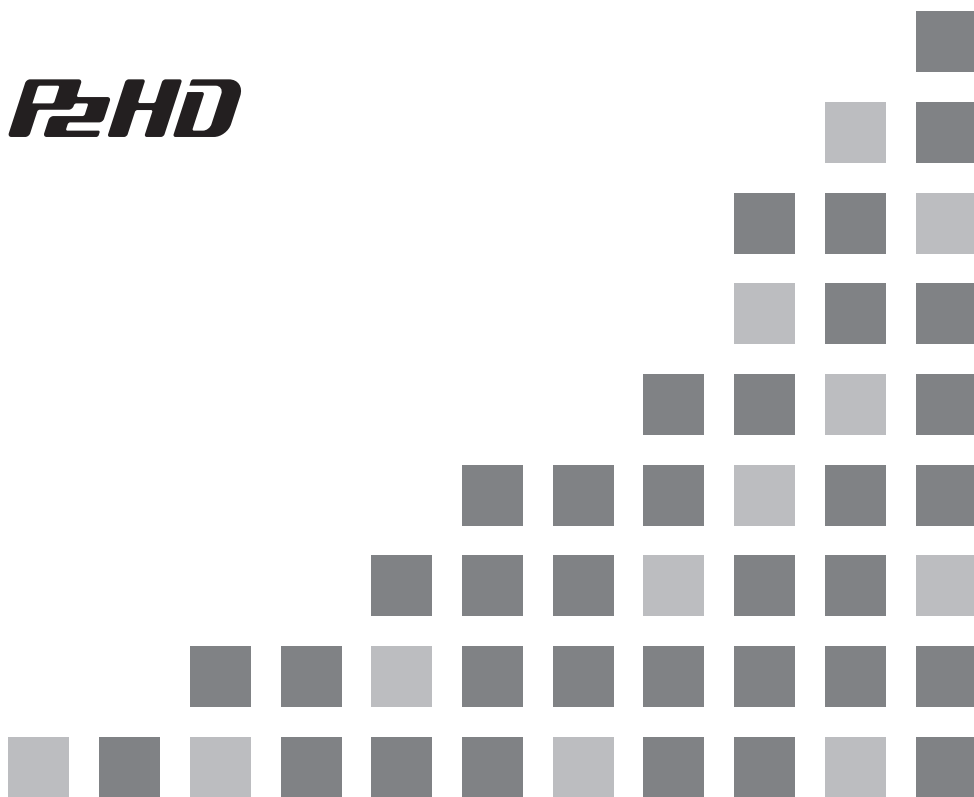
Install Manual

P2 Software

P2

micro
P2

P2HD



Contents

Operating Precautions	2
When Using Windows	3
1. Before Installing	3
2. Precautions in Handling P2 Cards in a Personal Computer	4
3. Software to be Installed.	4
4. Installation of the P2 Software	5
5. Adding a New P2 Device	11
6. Uninstallation of the P2 Software	12
7. Setting up an internal P2 drive	12
8. Checking P2 Driver Installation Status	13
9. Checking P2 Driver Version	15
10. Software for each P2 device	15
11. P2 Card Formatter	16
12. Using Windows 7 and Windows 8	18
When Using Macintosh	19
1. Before Installing	19
2. Installation of the P2 Software	20
3. P2 Card Formatter	21
4. Software for each P2 device	23
CPS Encryption Function	24

Operating Precautions

Redistributing the software included with the supplied CD-ROM is prohibited, regardless of whether or not compensation is received. Use of the software stored on the supplied CD-ROM without permission for the purposes of manufacturing and/or selling software and hardware shall be also prohibited.

Panasonic does not accept any liability whatsoever for losses and/or damage that may arise from using or not being able to use this system. This shall apply even if we have already been notified of the possibility of such damage.

Microsoft and Windows are registered trademarks of Microsoft Corporation of the United States. Macintosh and Mac OS are registered trademarks of Apple Inc. of the United States. Other names of companies and products are trademarks or registered trademarks of the respective companies.

- In this manual, Microsoft® Windows®, Windows® XP Professional, Windows® 7 Professional, Windows® 7 Ultimate and Windows® 8 are referred to as "Windows," "Windows XP Professional," "Windows 7 Professional," "Windows 7 Ultimate" and "Windows 8."
- In this manual, Macintosh® and Mac OS® X are referred to as "Macintosh," and "Mac OS X."

When Using Windows

1. Before Installing

The supplied CD-ROM installs the P2 software used to reference Panasonic P2 cards on a personal computer.

The P2 software can be installed on a personal computer that meets the following conditions:

- **OS** Windows XP Professional (SP3) 32 bit
Windows 7 Professional (SP1),
Ultimate (SP1) 32 bit/64 bit
Windows 8 32 bit/64 bit
- **RAM** 512 MB or greater recommended
1 GB or greater recommended for
Windows 7 and Windows 8
- **CPU** Pentium®4 1.5 GHz or greater recommended
- The personal computer must be equipped with a drive for reading CD-ROM discs.

It must also meet the following conditions when using the software or when connecting to P2 cards or P2 devices (P2 drives or P2 decks).

When using the software with a P2 card directly inserted into the card bus of the personal computer:

- A Type 2 card bus slot must be installed.

<Note>

- When connecting P2 devices to a personal computer, make sure that the number of free drives that the computer can use is equal to or larger than the number of drives that each P2 device requires.
(A P2 device requires a free drive for each P2 card slot and the free drives required by built-in hard disks.)
- In Windows 7 or 8, installation, formatting or other operations may bring up the "User Account Control" dialog box. If it does, click "Continue" to continue the operation.
- Do not assign P2 devices to drive A or drive B.

2. Precautions in Handling P2 Cards in a Personal Computer

When using the software with P2 cards or P2 devices connected to the personal computer, be sure to install the P2 driver on the personal computer from the supplied CD-ROM.

These devices will not operate properly if they are connected to a personal computer where the P2 driver has not been installed.

During reading from or writing to a P2 card, do not:

- **remove the P2 card from the slot**
- **"eject" the P2 card**
- **connect or disconnect the USB cable or change USB connector settings**

Otherwise, the personal computer may not operate normally.

Also, perform the following operation before removing a P2 card from the card slot:

- If the P2 card is inserted directly into the card bus in a personal computer, execute "Safely Remove Hardware" from the system tray on the Windows taskbar.
- If the P2 devices are connected to a personal computer via USB3.0/USB2.0, open My Computer, then right-click the hardware item containing the P2 card, and select "Eject."
- Set up the personal computer system so that it will not go into standby mode or hibernation mode during P2 card use. If the system enters standby mode or hibernation mode during P2 card access, processed files and data may be corrupted.

3. Software to be Installed

The supplied CD-ROM installs the following programs:

- P2 driver
- Software for each P2 device

Installation of the programs on the supplied CD-ROM allows you to format P2 cards. For details on formatting, refer to "11. P2 Card Formatter" (page 16).

The supplied CD-ROM also contains a set of instruction manuals. Refer to the folder named \Manuals.

To browse instruction manuals, you need Adobe® Reader.

If Adobe Reader is not currently installed on the personal computer, you will need to download it from the Adobe Web site.

4. Installation of the P2 Software

<Note>

- Log on with a user name that has administrator privileges to install the P2 software.
- The P2 devices should be connected to the personal computer before software installation is started.

When P2 devices are connected to the personal computer, Windows Explorer will additionally display the same number of drives as there are card slots in the devices.

- The P2 card driver needs to be installed for each card bus slot. If you are using a personal computer that has two or more card bus slots, insert a P2 card into every slot. The driver will not be installed in slots that do not contain a P2 card and this could lead to P2 card malfunctions. If the PC does not recognize the inserted P2 card, then try re-inserting it.

- In Windows XP Professional, installation of the software may fail when the driver signature option in Windows is set to “Block”. If the installation fails, select the Hardware tab in the “System Properties” window in Control Panel and check whether the driver signature option for the driver is set to “Block”.

- If a dialog box not described in this manual appears during software installation, click “Cancel” to close it.
- When a P2 card or other device is connected to the personal computer before installing the driver, the dialog box shown in Figure 1 appears. Be sure to click “Cancel” to close it.



Figure 1
(For Windows XP Professional)

- **Users with a P2 driver version prior to 1.07.0048 already installed in Windows XP Professional**

For details on a procedure to check driver version, refer to “9. Checking P2 Driver Version”. To install the new driver, you need to uninstall the currently installed driver. Uninstalling this driver will delete all installed data. Refer to “6. Uninstallation of the P2 Software” for details on a procedure to uninstall the driver and notes on uninstallation.

Alternately, you can uninstall the old version of the P2 driver in an upgrade of the P2 driver. Whichever method you choose, you may have to restart Windows.

- If the personal computer is running Windows 7 or Windows 8, the dialog box shown in Figure 2 may appear when you upgrade the P2 driver. If it does, click the “OK” button.

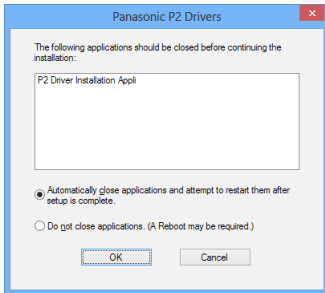


Figure 2

After checking each item in “1. Before Installing” use the following procedure to install the P2 software in the personal computer:

- 1 Close all applications, then connect the P2 cards or P2 devices you will use to the personal computer.

Connecting the devices to the personal computer will bring up the Found New Hardware Wizard box. Click “Cancel” to close it.

- 2 Insert the supplied CD-ROM and open it from My Computer.

- 3 In the 32-bit version of Windows, open the “Win32” folder, in the 64-bit version, open the “Win64” folder. Then run setup.exe. The window shown in Figure 3 appears and the setup process starts. Click “Next”.



Figure 3

4 (Users with a P2 driver version prior to 1.07.0048 already installed in Windows XP Professional)

The dialog box shown in Figure 4 appears. To install the new driver, you need to uninstall the currently installed driver.

If you wish to continue with the uninstallation, click the "OK" button.

If you wish to uninstall manually, click "Cancel". Refer to "6. Uninstallation of the P2 Software" for information on manual uninstallation.



Figure 4

5 The License Agreement dialog box shown in Figure 5 appears. If you agree to the terms of the License Agreement, click "I accept the terms in the license agreement," then click "Next".

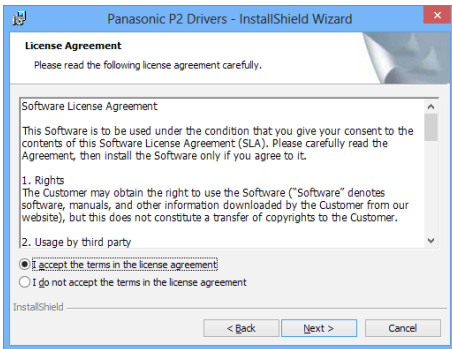


Figure 5

6 The installation destination folder setting window shown in Figure 6 appears. To change the installation destination folder, click "Change", and then create a new folder. Once the new installation destination folder is set, click "Next".

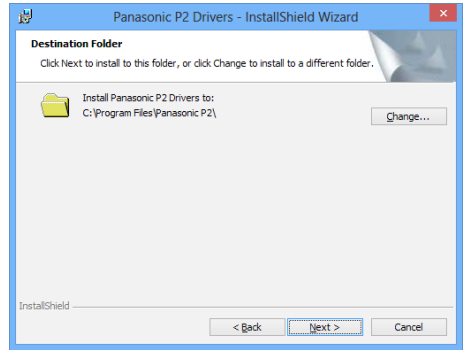


Figure 6

7 The installation start window shown in Figure 7 appears. Click "Install."

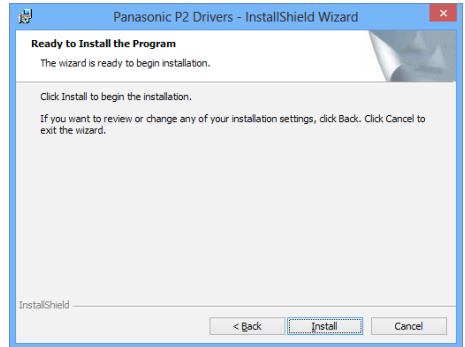


Figure 7

8 The status display window shown in Figure 8 appears indicating that installation is in progress.

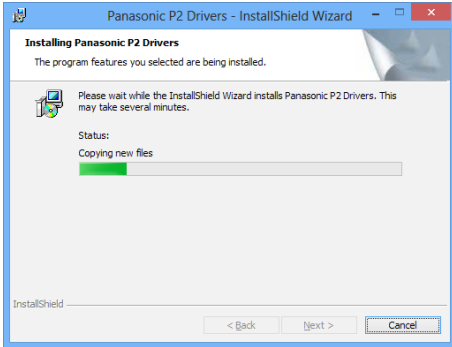


Figure 8

9 The driver installation selection window shown in Figure 9 appears showing each device.

To install drivers other than a USB driver, add a check mark and click "OK."

USB drivers are installed automatically.

- Drivers need not be installed for devices that already have them. For monitoring the installation status, refer to page 13.

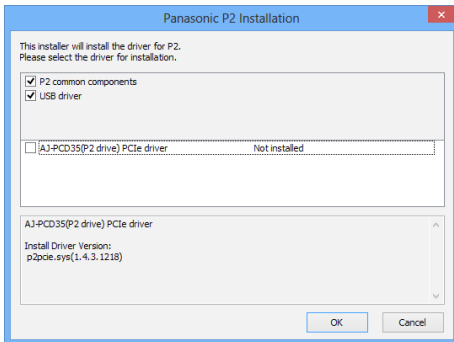


Figure 9

10 When a check mark is added in Step 9 and "OK" is clicked, the dialog box shown in Figure 10 appears to prompt you to connect to a P2 card or P2 device.

If you need to install them, connect them, then click "Install." If you do not wish to use them, just click "Cancel."

If at some future time you want to add a device that was skipped in the initial setup, execute the installer again to perform an overwrite installation of the device. Please refer to "5. Adding a New P2 Device" for more information.

<Note>

When the focus shifts to another window during installation, this box may be hidden behind that window. If the box shown in Figure 8 stays on and its status display does not change, check whether the box shown in Figure 10 is hidden behind another window.

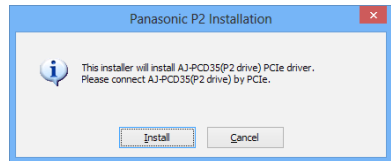


Figure 10

11 For Windows XP Professional,
The message window shown in Figure 11 may appear. Click “Continue Anyway”.
The message window may appear several times.



Figure 11

For Windows 7 and Windows 8
The message window shown in Figure 12 may appear. Click “Install this driver software anyway”.
The message window may appear several times.

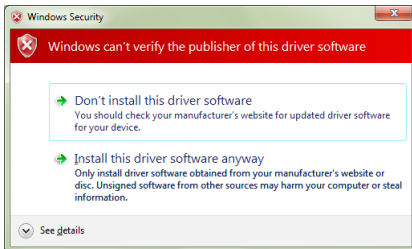


Figure 12

12 (Users with a P2 driver version prior to 1.07.0048 already installed in Windows XP Professional)

The message window shown in Figure 13 may appear. This indicates that the old version P2 driver version has been uninstalled and that the new version of the driver has not yet been installed. Click the “OK” button to close the installer, restart Windows and then start the installation operation again from Step 1.



Figure 13

13 As shown in Figure 14, the installation completion window appears signifying completion of the installation.

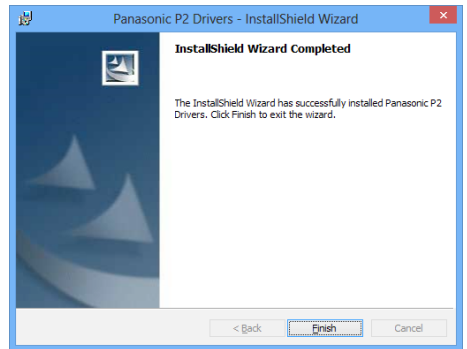


Figure 14

- 14** The dialog box shown in Figure 15 appears prompting you to restart the personal computer. Click "Yes" to restart.

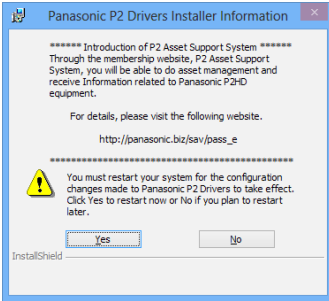


Figure 15

- 15** To connect P2 devices using USB, restart the personal computer and install a USB driver according to the following procedure.

1. Connect one P2 device.
2. The message window shown in Figure 16 may appear for Windows 7 and Windows 8. If it does, click "Yes."

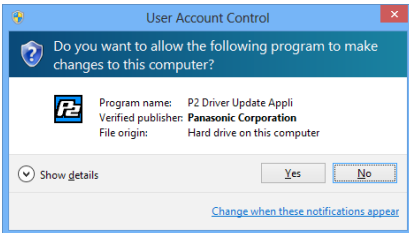


Figure 16

3. If the USB driver required by the connected P2 device has not been installed, the dialog box shown in Figure 17 appears.

The dialog box in Figure 17 does not appear if the USB driver has been installed and there is no need to install it.

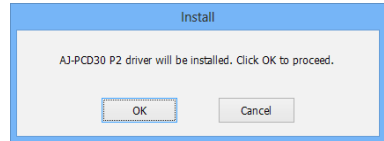


Figure 17

4. Clicking "OK" in the dialog box shown in Figure 17 starts USB driver installation. A message window (Figure 11) may appear for Windows XP. Click "Continue Anyway".

- When USB driver installation finishes, the dialog box shown in Figure 18 appears.

If you want to continue installing USB drivers for other P2 devices, click "Close" to close the dialog. Then disconnect the connected P2 device and again perform the installation procedure from Step 1..

To connect two P2 drives, click "Close" to close the dialog. Then connect a second P2 drive while letting the connected P2 drive remain connected and perform the installation procedure from Step 2.. Click "Restart" to restart the personal computer when USB driver installation finishes.

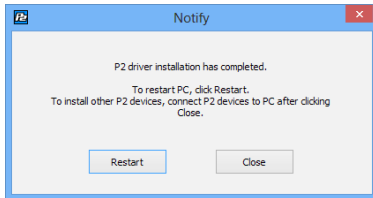


Figure 18

<Note>

When two P2 drives are connected, the dialog box shown in Figure 17 may appear again after the personal computer is restarted. If it does, click "OK" and perform USB driver installation.

5. Adding a New P2 Device

To connect a new P2 card or P2 device through means other than a USB cable to a personal computer where the P2 software has already been installed, use the procedure described in "4. Installation of the P2 Software" to perform an overwrite installation of the P2 software.

During the overwrite installation, the window shown in Figure 19 appears, but the License Agreement box shown in Figure 5 will not reappear.

In this window, check "Repair", then click "Next". After following the instructions displayed on the screen, restart the personal computer.

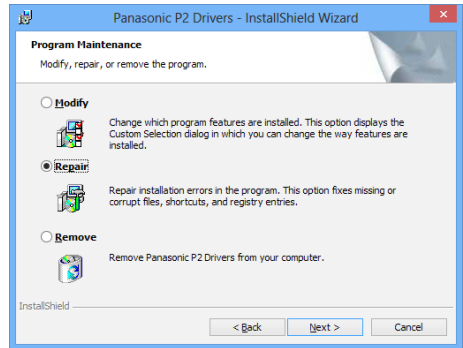


Figure 19

<Note>

The above screen will be displayed when the installed P2 software and the installer have the same version.

6. Uninstallation of the P2 Software

To uninstall the P2 software, use the following procedure:

For Windows 7 and Windows 8

In the “Programs and Features” window in the “Programs” window of the Control Panel, select “Panasonic P2 Drivers”, then click “Uninstall.”

For Windows XP Professional

In the “Add or Remove Programs” window of the Control Panel, select “Panasonic P2 Drivers”, then click “Remove”.

After following the instructions displayed on the screen to complete the uninstallation, follow the on-screen instructions to restart the personal computer.

<Note>

- Uninstalling the software will delete all installed data so if you have to install the software again, you will also have to install the drivers for all the devices that you will need.
- If the personal computer is running Windows 7 or Windows 8, the dialog box shown in Figure 20 may appear when you uninstall the P2 driver. If it does, click the “OK” button.

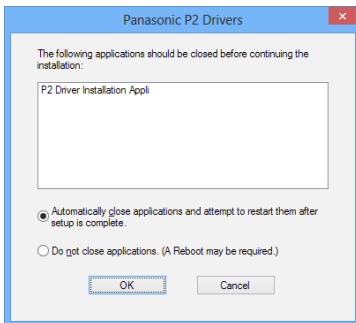


Figure 20

7. Setting up an internal P2 drive

To use a personal computer that integrates a P2 drive in a 5 type bay, install the P2 card software, connect the P2 drive to the personal computer. Then make the following setting:

1 For Windows 8

Move the cursor to the top right corner or bottom right corner of the desktop, and click “Search” in the bar that appears. Select “Enable Internal Drive” in the “Panasonic P2” group of the application list that appears.

For Windows 7 and Windows XP

Select the following: “Start” > “All Programs” > “Panasonic P2” > “Set P2 Drive Settings” > “Enable Internal Drive”.

- 2 The box shown in Figure 21 appears. Click “OK”.



Figure 21

8. Checking P2 Driver Installation Status

When the standard driver is installed via the Found New Hardware Wizard box (Figure 1), or when the P2 driver is uninstalled for some reason, the P2 device will not operate properly. If any of the following events occur, check whether the P2 driver is properly installed. If it is not, reinstall it.

- The P2 card or P2 device is not recognized.
- The P2 card or P2 device cannot be read.
- The P2 card or P2 device cannot be written to.
- Image frame dropping occurs frequently during playback from the P2 card or P2 device indicating that there is a performance problem.

Method for checking 1394 drivers for AJ-PCD20 and PCI EXPRESS drivers for AJ-PCD35

Refer to the instruction manuals supplied with the AJ-PCD20 and AJ-PCD35.

Method for checking P2 card drivers and USB drivers for P2 devices

<Note>

To check whether the P2 driver is properly installed, connect the appropriate device to the personal computer. Devices not connected to the personal computer cannot be checked using the following method:

For Windows 8

Move the cursor to the bottom left corner of the desktop and right-click the mouse.

In the menu that appears, click on Device Manager.

For Windows 7

Select "Start", right-click "Computer", and select "Property". The System Properties window appears. Click on Device Manager at the top left of the window.

For Windows XP Professional

Select: "Start" > "Control Panel" > "System". The System Properties window appears. Select the Hardware tab, then click on Device Manager.

1 Check the P2 device driver display.

Checking the P2 card driver

"IDE ATA/ATAPI controllers" - "Panasonic P2 Card" is set.

"P2 Disk Drive" - "P2Card Series Cached Disk" is set.

Checking P2 USB devices drivers

"Universal Serial Bus controllers" - "Panasonic P2 Series USB Device" is set.

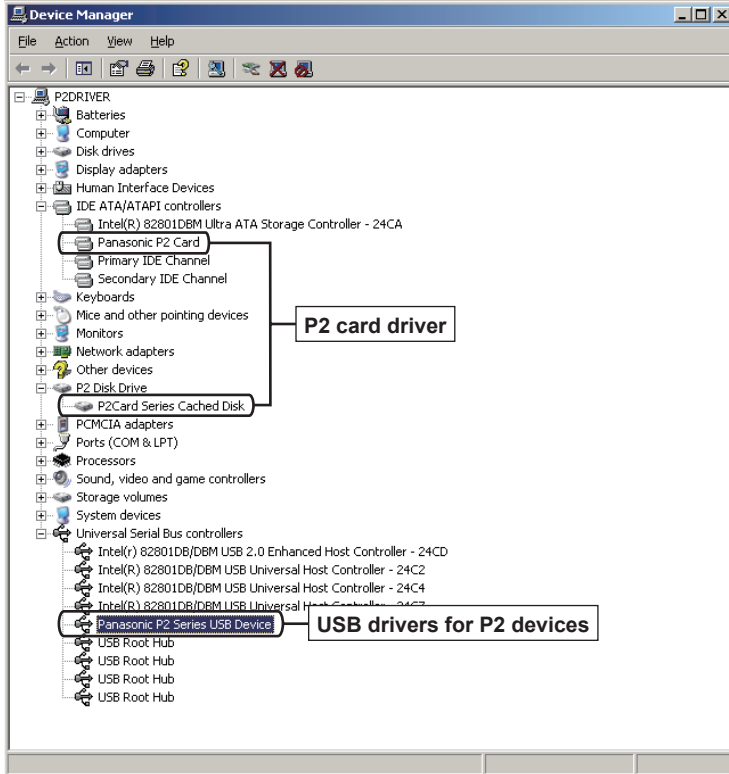


Figure 22

9. Checking P2 Driver Version

For Windows 7 and Windows 8

Select: "Control Panel" > "Program" > "Uninstall a program". A list screen that displays the version appears.

For Windows XP Professional

In the "Add or Remove Programs" window in Control Panel, select "Panasonic P2 Drivers", then refer to the support information.

10. Software for each P2 device

After installation of the P2 software, software for each P2 device will be installed simultaneously. For information on software for each device, refer to the instruction manual of the respective software.

11. P2 Card Formatter

The P2 card formatter can format P2 cards or micro P2 cards for P2 devices.

Formatting procedure

1 In Windows Explorer, right-click the drive containing the card you want to format. In the menu that appears select "Format".

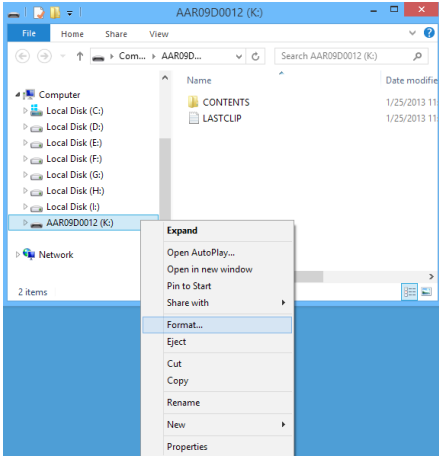


Figure 23

2 The window shown in Figure 24 appears.

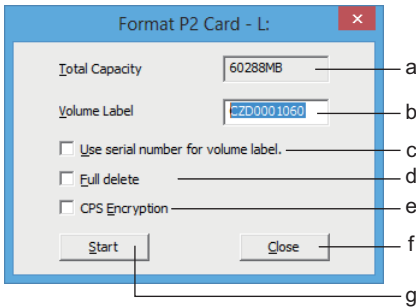


Figure 24

- a Displays the total capacity of the card.
- b Enter the desired volume label name.
- c Enter a checkmark to use the card serial number as the volume label.
- d You can enter the checkmark only when using P2 cards or micro P2 cards (CPS authenticated).

d Enter a checkmark to delete all data from a card.

You can enter the checkmark only when using P2 cards or micro P2 cards.

e Enter a checkmark to activate the CPS encryption function of the card.

You can enter the checkmark only when a password for automatic authentication has been set on a personal computer, and when using micro P2 cards.

For details on the CPS encryption function, refer to "CPS Encryption Function" (page 24).

f Closes the window.

g Starts the formatting.

3 Set the volume label etc. and click "Start." When using an E series P2 card or an F series P2 card / micro P2 card (CPS authenticated), the Remain life time is indicated in a window like the one shown in Figure 25. Check the Remain life time and click "OK."

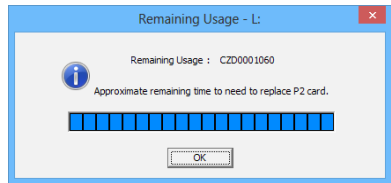


Figure 25

4 When you have not checked the "Full delete" checkbox in the window shown in Figure 24, the warning window shown in Figure 26 appears. If you are sure you wish to format, click the "OK" button to begin formatting.

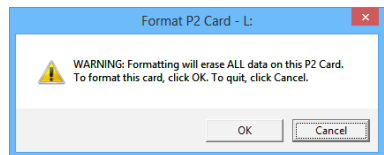


Figure 26

When you have checked the “Full delete” checkbox in the window shown in Figure 24, the warning window shown in Figure 27 appears. If you are sure you wish to format, click the “OK” button.

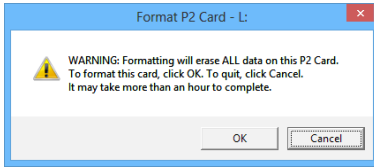


Figure 27

Then another warning window like the one shown in Figure 28 appears. If you are sure you wish to format, click the “OK” button to begin.

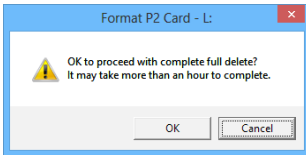


Figure 28

5 During formatting, progress is indicated by the progress bar shown in Figure 29.

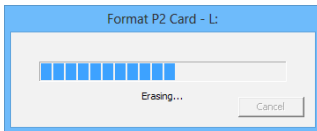


Figure 29

6 When formatting is completed, the window shown in Figure 30 appears. Click the “OK” button to close the window.

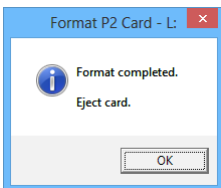


Figure 30

<Note>

- You cannot recover data erased by formatting. Always check the data before formatting.
- You must log in under a user name with Administrator privileges to format.
- If you enter a checkmark in “Use serial number for volume label”, the serial number of the card will automatically be entered as the volume label. If you then change the serial number to a different character string, the new character string will be set as the volume label.
- When using an E series P2 card or an F series P2 card / micro P2 card (CPS authenticated), the Remain life time of the P2 card is displayed as follows.

Remain life time	Display color	Display
100% to 61%	Blue	
60% to 21%	Green	
20% to 9%	Yellow	
8% to 1%	Red	
0%	Red	RUN DOWN CARD

- When “RUN DOWN CARD” is displayed, formatting cannot be performed correctly. We recommend that you back up the data on the card and change cards within one week. If you continue using the old card, normal recording and playback may not be possible.
- The processing for fully erasing the P2 card is equivalent to a writing operation and therefore reduces the Remain life time.
- The Explorer display may not be updated after formatting. If it is not, quit Explorer and restart the personal computer.

12. Using Windows 7 and Windows 8

Drive display settings

Under the default settings, an empty drive that does not contain a P2 card will not appear in My Computer or the tree view of Windows Explorer. To display the drive at all times, change the Windows "Folder Options" settings.

Drive name assignments

When a P2 drive is connected, drive names may not be assigned according to slot order. If this occurs, change the drive name assignments in "Disk Management".

IEEE1394b support in Windows 7

- When using the AJ-PCD20 P2 drive in the IEEE1394b interface, the drive name cannot be changed.
- When installing the IEEE1394b driver for the AJ-PCD20 P2 drive in a P2 driver update, a message indicating that the driver has already been installed may appear. Even if this happens, be sure to proceed with installation of the IEEE1394b driver.

IEEE1394b support in Windows 8

The IEEE1394b interface on the AJ-PCD20 is not guaranteed to operate. Use the USB interface on the AJ-PCD20.

When Using Macintosh

1. Before Installing

The P2 software listed below is provided on the supplied CD-ROM

- P2 driver
- P2 Card Formatter
- Software for each P2 device

The P2 software can be installed on a Macintosh computer that meets the following conditions:

- **OS** Mac OS X 10.6 Snow Leopard
Mac OS X 10.7 Lion
Mac OS X 10.8 Mountain Lion

2. Installation of the P2 Software

P2 software must be installed to reference P2 card data and handle P2 cards on a Macintosh. A P2 software installation installs the following software.

- USB driver
- IEEE1394b driver for AJ-PCD20
- PCI Express driver for AJ-PCD35
- P2 Card Formatter

Install the software in the following order.

- 1** Insert the supplied CD-ROM.
- 2** Double-click the "Macintosh" folder in the CD-ROM.
- 3** **For Mac OS X 10.6**
Double-click the "SnowLeopard" folder.
For Mac OS X 10.7
Double-click the "Lion" folder.
For Mac OS X 10.8
Double-click the "Mountain Lion" folder.
- 4** Double-click the "P2Software" folder.
- 5** Double-click the "P2Software Install.dmg" disk image module in the "P2Software" folder.

6 Double-click the "P2Software Install.mpkg". If a warning window informs you that "'P2Software Install.mpkg' can't be opened because it is from an unidentified developer.", click "OK."

Again, click the "P2Software Install.mpkg" while holding down the "Ctrl" key, and select "Open" in the menu that appears. "'P2Software Install.mpkg' is from an unidentified developer. Are you sure you want to open it?" When a confirmation window like this appears, click the "Open" button.

7 The installation of the software will begin. Follow the instructions on the screen to complete the install.

<Note>

- Adequate operating speeds will not be obtained unless the P2 software is installed.
- For the most recent information on P2 software, visit the web site listed below.
<http://pro-av.panasonic.net/>

3. P2 Card Formatter

The P2 card formatter can format P2 cards or micro P2 cards for P2 devices.

Formatting procedure

- 1 Double-click the P2Formatter icon in the application folder.
When a warning window like the one shown in Figure 31 appears, click the “OK” button.

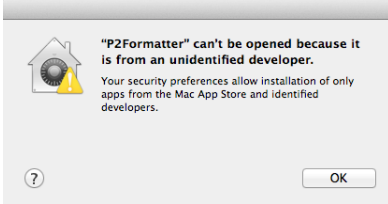


Figure 31

Again, click the P2Formatter icon while holding down the “Ctrl” key, and select “Open” in the menu that appears.
When a confirmation window like the one shown in Figure 32 appears, click the “Open” button.

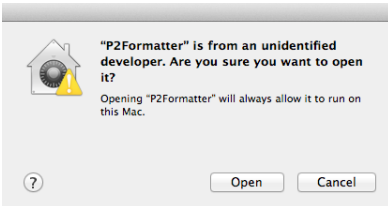


Figure 32

- 2 When an input window like the one shown in Figure 33 appears, enter a user name and password for a user account with administrator privileges and click the “OK” button.

The formatter will not start up without the access permission of an administrator.

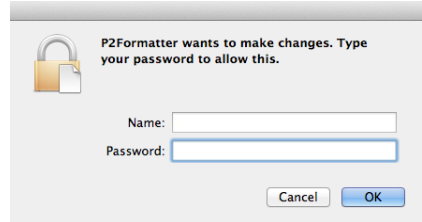


Figure 33

- 3 When the P2Formatter starts up, the P2 card formatter window shown in Figure 34 appears.

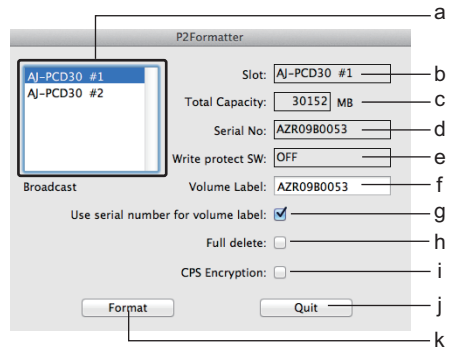


Figure 34

- a Select the slot containing the card you want to format.
- b Displays the selected slot.
- c Displays the total capacity of the card.
- d Displays the serial number of the inserted card.
It remains blank when an SDHC or SDXC card is used.
- e Displays the status of the write protection switch.

- f Enter the desired volume label name.
- g Enter a checkmark to use the serial number of the card as the volume label. You can enter the checkmark only when using P2 cards or micro P2 cards (CPS authenticated).
- h Enter a checkmark to delete all card data. You can enter the checkmark only when using P2 cards or micro P2 cards.
- i Enter a checkmark to activate the CPS encryption function of the card. You can enter the checkmark only when a password for automatic authentication has been set on a Macintosh, and when using micro P2 cards. For details on the CPS encryption function, refer to “CPS Encryption Function” (page 24).
- j Closes the P2 card formatter window.
- k Starts the formatting.

4 Set the volume label and other settings and click “Format”.

When using an E series P2 card or an F series P2 card / micro P2 card (CPS authenticated), the Remain life time is indicated in a window like the one shown in Figure 35. Check the Remain life time and click “OK.”

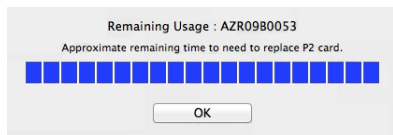


Figure 35

5 When you have not checked the “Full delete” checkbox in the window shown in Figure 34, the warning window shown in Figure 36 appears. If you are sure you wish to format, click the “OK” button to begin formatting.

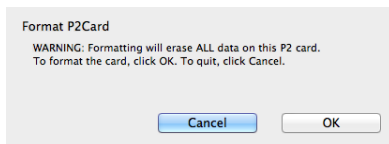


Figure 36

When you have checked the “Full delete” checkbox in the window shown in Figure 34, the warning window shown in Figure 37 appears. If you are sure you wish to format, click the “OK” button.

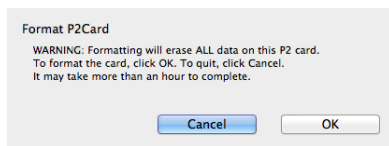


Figure 37

Then another warning window like the one shown in Figure 38 appears. If you are sure you wish to format, click the “OK” button to begin.

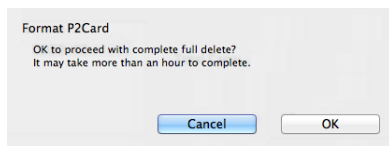


Figure 38

- 6 During formatting, progress is indicated by the progress bar shown in Figure 39. When an input window like the one shown in Figure 33 appears during formatting, enter a user name and password for a user account with administrator privileges and click the “OK” button. The P2 card will not be formatted properly if “Cancel” is clicked. Since this will prevent use of the P2 card, format it again.

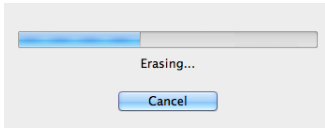


Figure 39

- 7 Click the “Quit” button in the window shown in Figure 34 to end the formatting operation.

<Note>

- You cannot recover data erased by formatting. Always check the data before formatting.
- Do not remove cards while the formatter is in operation.
- Since a P2 drive (except AJ-PCD10) will access other unformatted cards after a card has been formatted, the status indicator will continue flashing after formatting. Do not remove cards while the status indicator is flashing.
- If you enter a checkmark for “Use serial number for volume label”, the serial number of the P2 card will automatically be entered as the volume label. If you then change the serial number to a different character string, the new character string will be set as the volume label.

- When using an E series P2 card or an F series P2 card / micro P2 card (CPS authenticated), the Remain life time of the P2 card is displayed as follows.

Remain life time	Display color	Display
100% to 61%	Blue	
60% to 21%	Green	
20% to 9%	Yellow	
8% to 1%	Red	
0%	Red	RUN DOWN CARD

- When “RUN DOWN CARD” is displayed, formatting cannot be performed correctly. We recommend that you back up the data on the card and change cards within one week. If you continue using the old card, normal recording and playback may not be possible.
- The processing for fully erasing the P2 card is equivalent to a writing operation and therefore reduces the Remain life time.

4. Software for each P2 device

For information on how to install and use P2 device software, refer to the instruction manual of the respective P2 device.

CPS Encryption Function

CPS encryption is a function that can be used to protect content on micro P2 cards.

Activating the card CPS encryption function will record all data in encrypted form and a password has to be entered to access the data on the card. The following software will have to be installed on a personal computer to enable use of the CPS encryption function.

- P2 software
- P2 Viewer Plus

You can download and install this software from the website listed below.

<http://pro-av.panasonic.net/>

The P2 Viewer Plus Help provides information on how to use the CPS encryption function.

Memo

Panasonic Corporation

Web Site: <http://panasonic.net>

© Panasonic Corporation 2009