

How to add P2 metadata

(Media Compose 8.3.3 or later with Panasonic P2Plugin 4.8.3 or later)

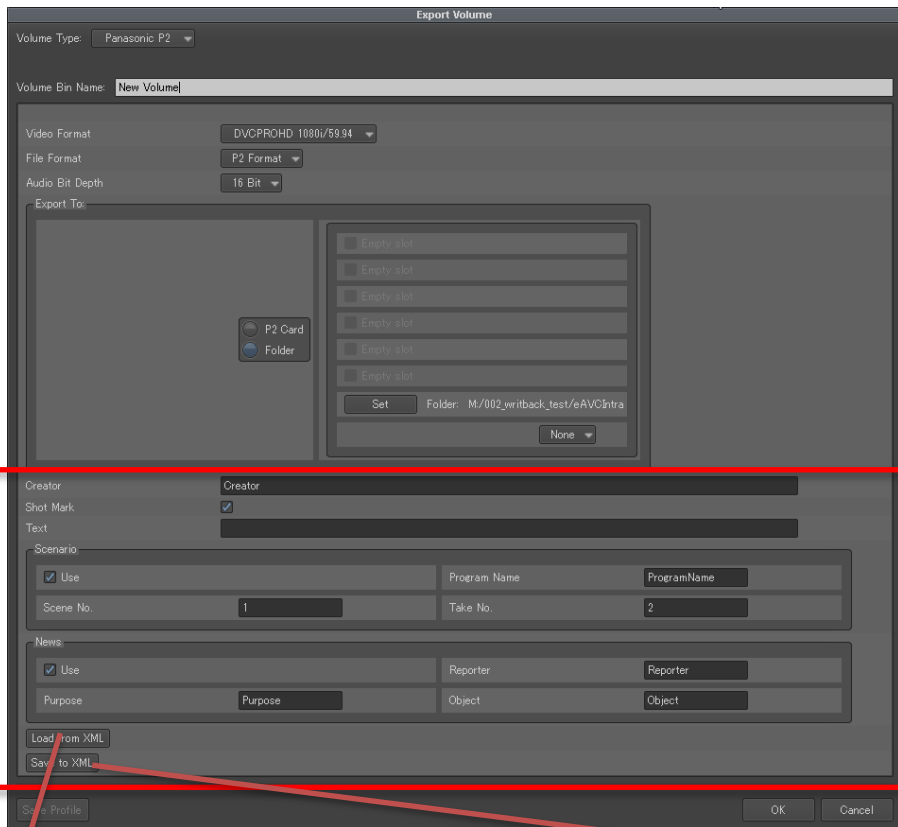
When you export P2 clip using export volume, you can **add P2 metadata**. And you can **add Media Composer's Marker** to export clip as text memo. These metadata can be used on P2 product and partner product which is supported P2 metadata. If you don't have these product, you can check by our viewer (P2 viewer + Windows/Mac) . This is free. By using this, you can add more information to exported clip. Like creator, Program name, reporter, Scene No.....etc) and using Marker, you can easy to explain point which you want add audio , change title on the exported clip.

How can you do that?

1. You can add Export Volume's **default metadata** on Export Volume Setting. This metadata is applied when you Drag&Drop sequence to export volume. If you don't change in Export Volume, these metadata will be add to exported clip. (See Page2 "How to use Export Volume Setting")
2. You can add/change **metadata sequence by sequence** in Export Volume. You can add different metadata to each clips. (See Page3 "How to change metadata in Export Volume")
3. You can export **Media Composer's Marker** as metadata (called text memo). When you import exported clip to product which is supported text memo, you can check marker which you added on Media Composer. And You can take over text memo which you add on camcorder or other product to exported clip, too. (See Page4 "How to export Media Composer's marker")

How to use Export Volume Setting

File -> New -> New Export Volume



P2 Metadata Area

These value will be default value of this Export Volume.

Creator : alphanumeric, max 30 char

Short mark : true or false

Text : Text Memo Area. You can add one text memo to export clip.
if you use Media Composer's marker, don't use this filed.

Program Name : alphanumeric

when use Scene No and Take No , this field is mandatory.

Scene No. : numeric ,0 to 2147483647

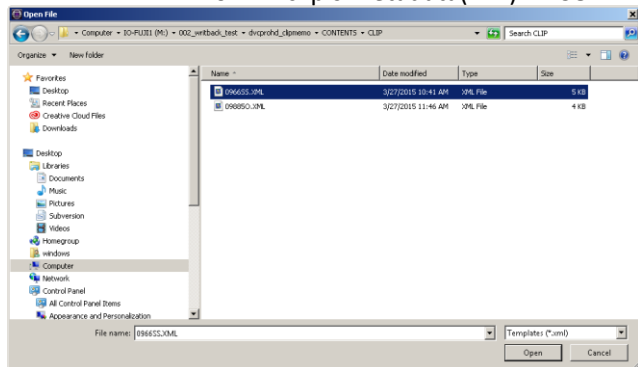
Take No. : numeric , 0 to 2147483647

Reporter : alphanumeric , max 30 char

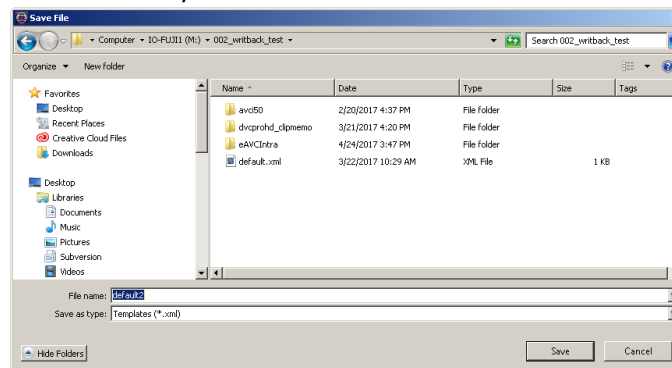
Purpose : alphanumeric, max 100 char

Object : alphanumeric, max 100 char

Load From XML : you can **load** xml which is saved before or P2 clip's metadata(xml) in CONTENTS¥CLIP

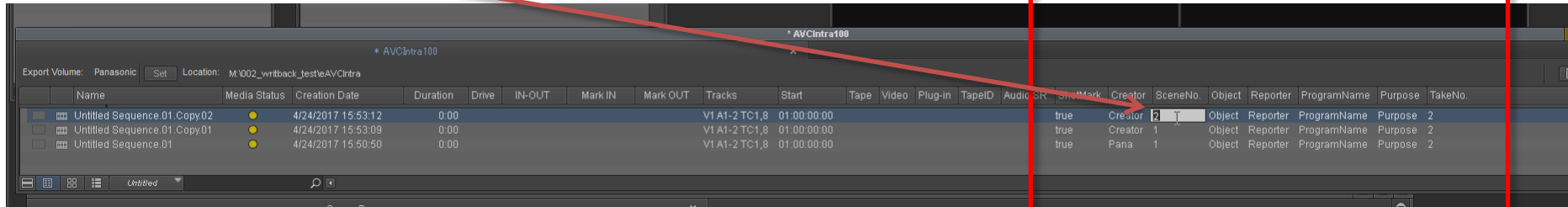


Save to XML : you can **save** current metadata for reuse.



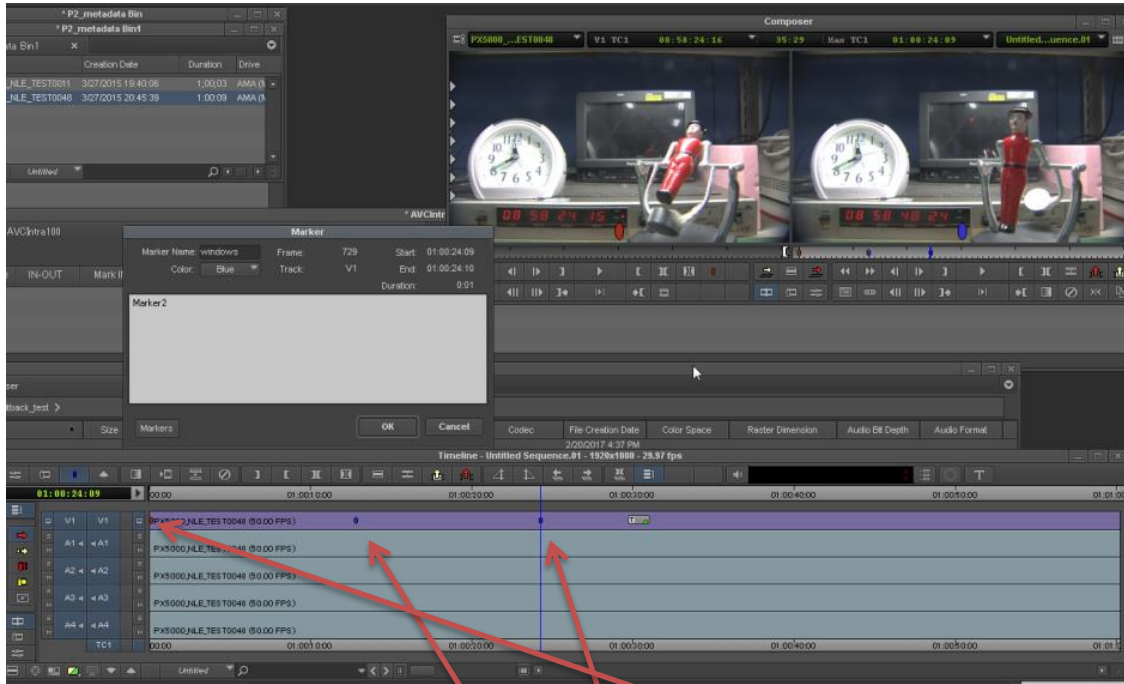
How to change metadata in Export Volume

When you Drag&Drop sequence to export volume, There are default metadata if you write on Export Volume Setting . Just crick column which you want to change. You can change value.



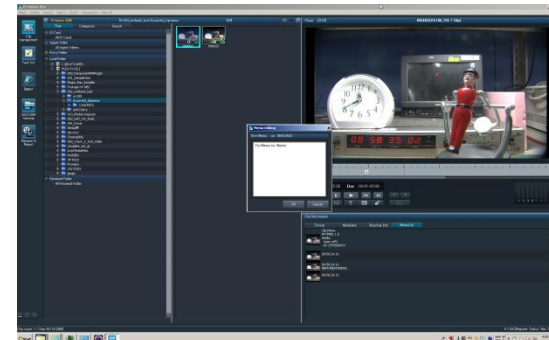
How to export Media Composer's marker

Add Marker to sequence then export sequence. These marker will be exported.



1.Original maker which is come from clip . You can take over and export these makers, too. So you can add maker as text memo by P2 viewer + or other product before editing.

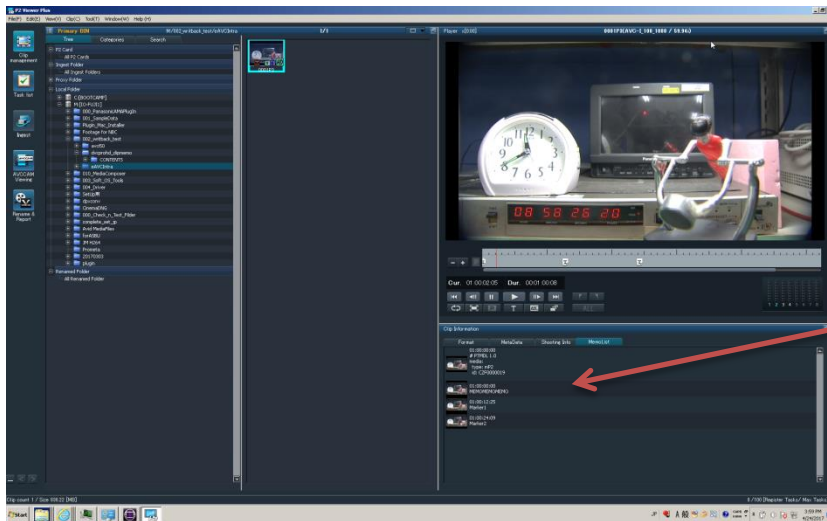
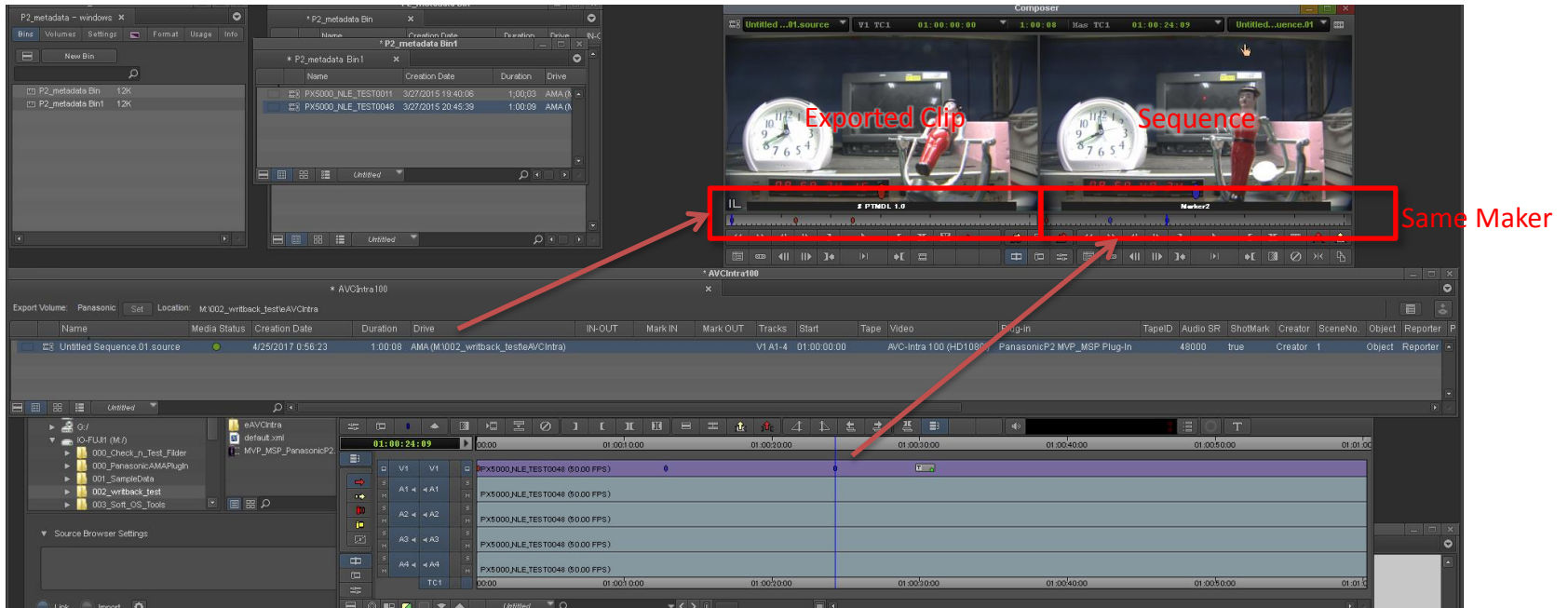
There are 2 type of maker



2.New maker which is added on Media Composer.
Notice : Please add Marker to Video track.

How to export Media Composer's marker (Result)

All maker is exported . You can check clip by loading from Export volume.



You can check by our viewer (P2 viewer + Windows/Mac Free)

Maker is exported as Text Memo