



CSS (Custom Splash Screen)
Application
Operating Manual

Contents

Introduction.....	3
1. Installing the tool.....	3
2. Starting the Software.....	6
3. Selecting the image file.....	7
➤ Adjusting the position.....	8
➤ Setting the background color.....	8
4. Setting the progress bar.....	9
5. Password setting.....	10
6. Setting the user information.....	11
7. Saving the setting values.....	12
8. Setting the CSS version update software.....	13
9. Procedure for CSS version updating on VariCam series.....	14
10. To restore a customized startup screen to its original state.....	14
11. Procedure for clearing a set password.....	14
12. Cautionary notes.....	15

Introduction

VariCam CSS Application (hereinafter referred to as the Software) is the application software for customizing the startup screen and registering the owner information of VariCam 35/HS, VariCam LT and VariCam PURE camera recorders (hereinafter referred to as the VariCam series).

For the system requirements of the Software and those with the VariCam series, please refer to our website.

Trademarks and Registered Trademarks

- Mac, Macintosh and OS X are trademarks of Apple Inc. registered in the United States and other countries.
- Other names, company names and product names mentioned in this document are trademarks or registered trademarks of the respective companies.

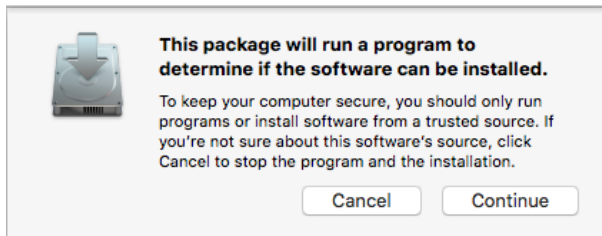
The TM and ® symbols are not used in this document.

1. Installing the tool

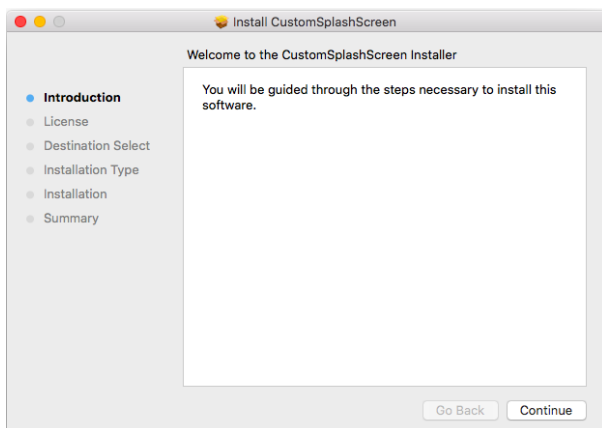
Double-click the installer.



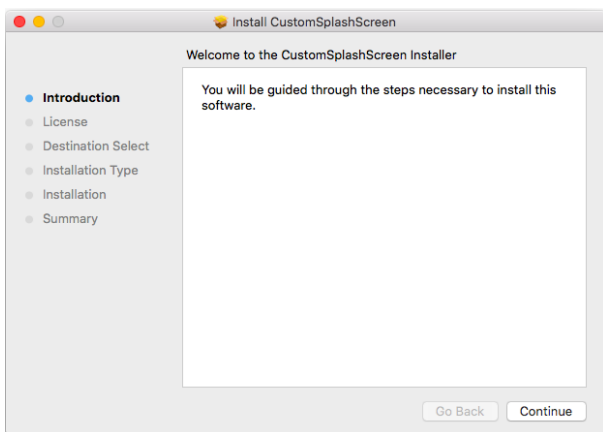
If the following screen appears, press [Continue].



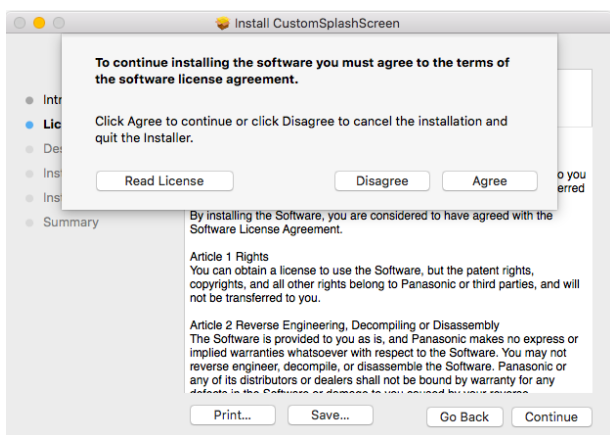
The following screen will appear, so click [Continue].



The following screen will appear, so click [Continue].

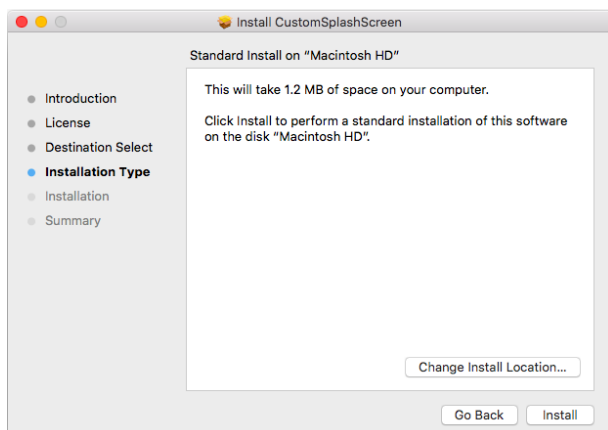


If you agree, click [Agree].



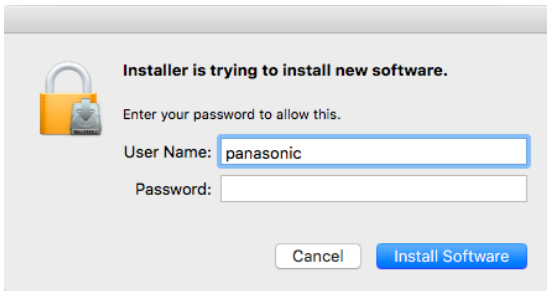
Confirmation screen about the installation location will appear. Usually, there is no need to change the default location.

If you need to change the location, set your desired one.

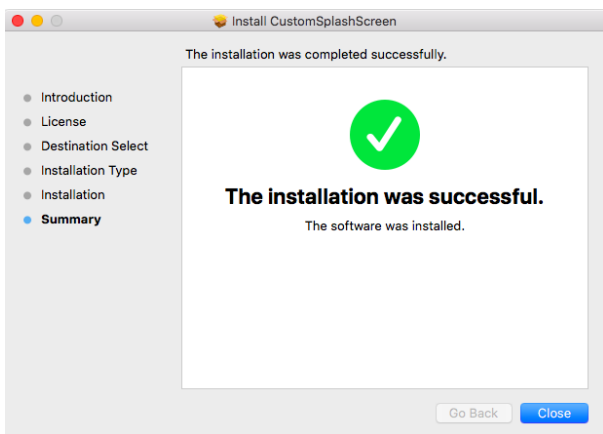


When the following window appears, enter the password.

(Depending on the version of Macintosh OS, a different window may appear.)

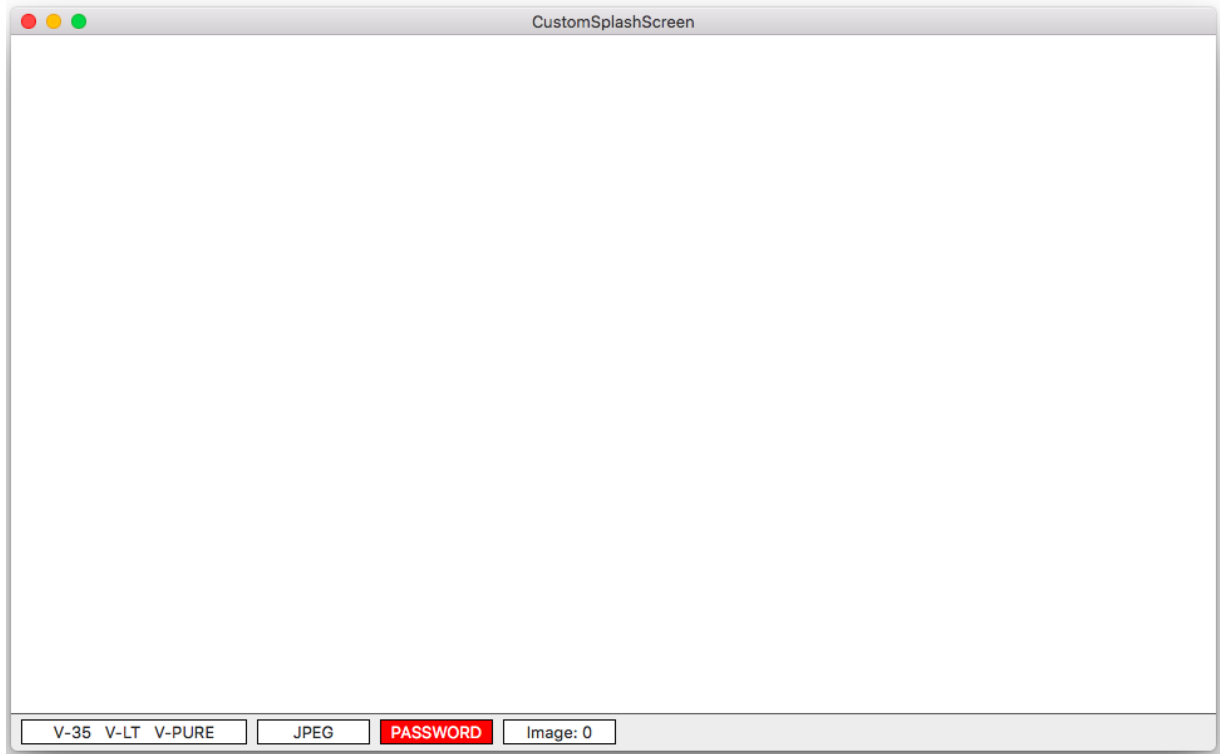


When the following screen appears, the installation process is completed.



2. Starting the Software

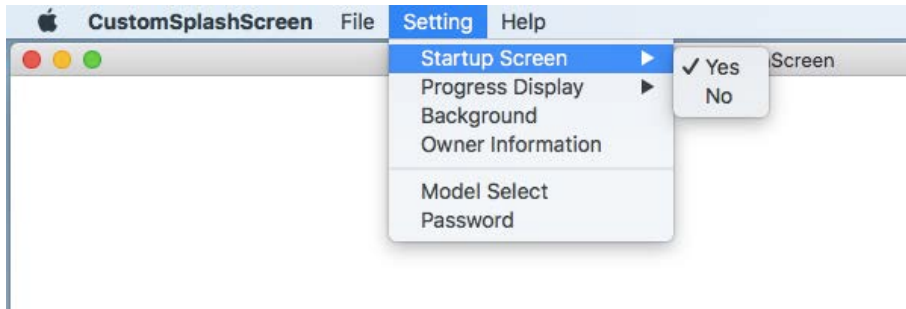
If you install the tool in the default location, the icon will be created in the application folder. By clicking the icon, you can start the Software. The screen size of the Software is 960 x 540, which is the same as VariCam LCD.



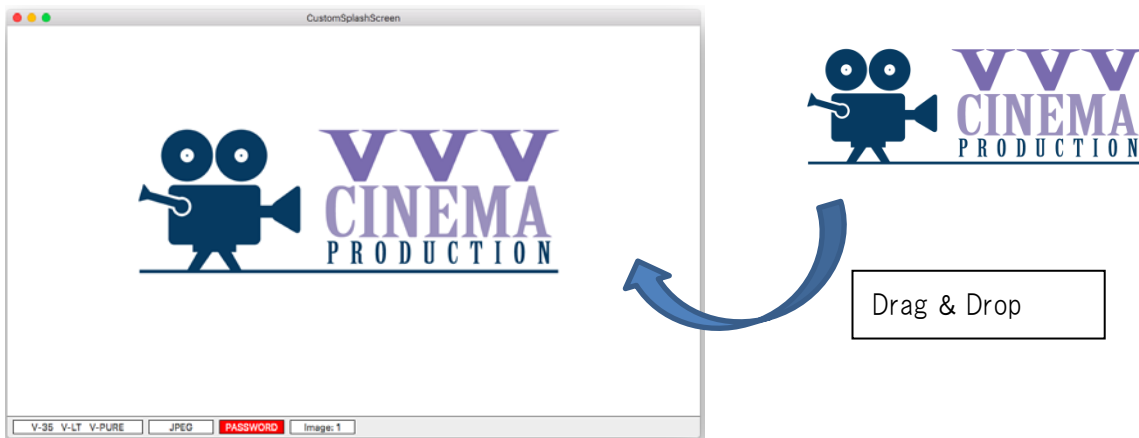
At the bottom of the window, the information about selected models, startup screen options, password settings and the number of placed images is displayed from left.

3. Selecting the image file

To customize the startup screen, check that [Setting] -> [Startup Screen] is set to "Yes" from the menu bar.



Next, prepare a bitmap file (BMP, PNG, JPG) you want to use for the startup screen, and drag and drop it into the tool. Its image will be displayed in the center of the screen. Up to five files can be put at one time. When the drag-and-drop operation is performed, the image will be displayed as in the following figure.



➤ Adjusting the position

By dragging the image on the tool, you can change its position freely. With CTRL + a click on the image, you can make the following menu appear to change its position, delete it and show its properties.

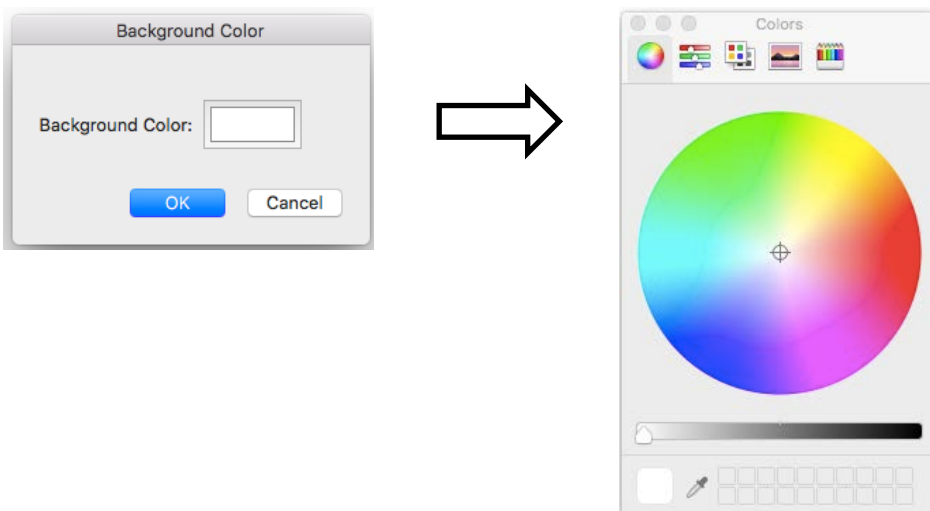


➤ Setting the background color

By selecting [Setting] -> [Background] from the menu bar, you can set up the background color. Also, with CTRL + a click on an area where no image is placed and by carrying out some operations, you can set it up.



Here, if you press the button for background color, the color pallet will be displayed. So set up the color.

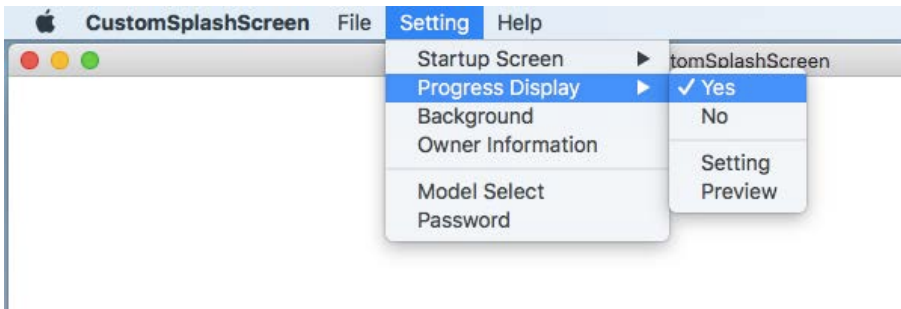


<NOTE>

After setting the image or background color, it is recommended that you should check their details again.

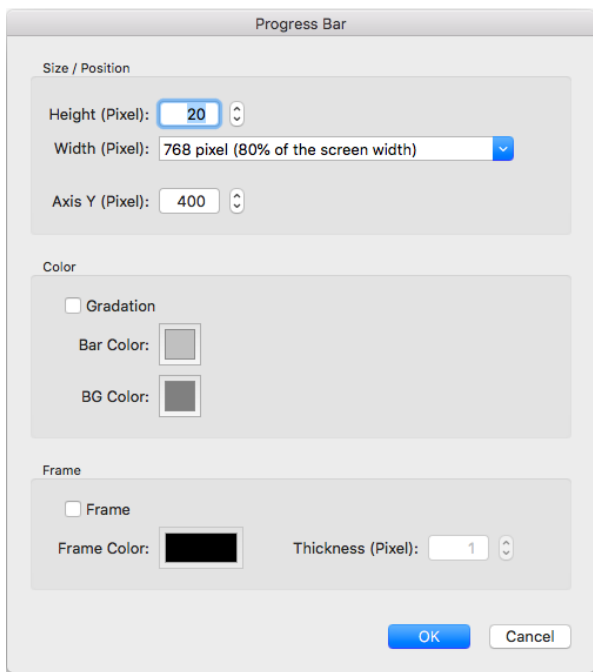
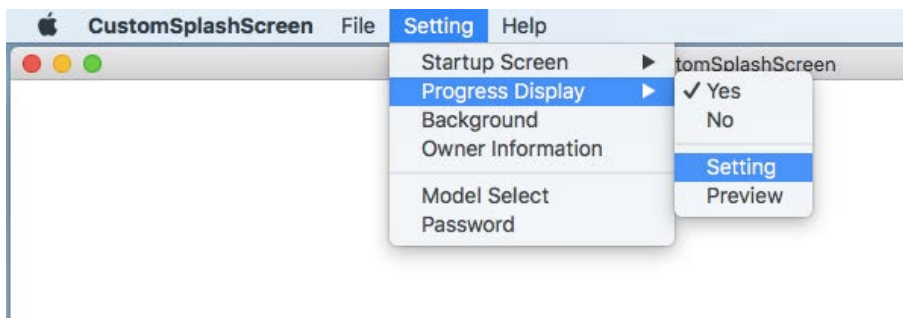
4. Setting the progress bar

By selecting [Setting] -> [Progress Display] -> [Yes] from the menu bar, the progress bar is displayed.



Here, by selecting [Setting] -> [Progress Display] -> [Setting] from the menu bar, you can set up the size, position, color and frame. With CTRL + a click on the progress bar shown in the area and by carrying out some operations, you can also set them up.

The maximum value of the height is 40.

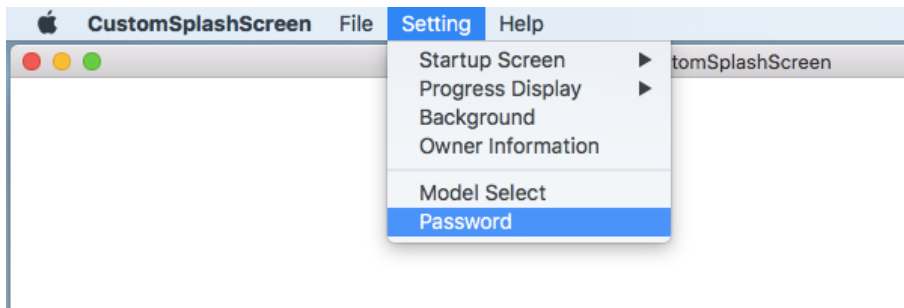


When the setting is completed, by selecting [Setting] -> [Progress Display] -> [Preview] from the menu bar, you can preview the actual display during the startup process. With CTRL + a click on the progress bar shown in the area and by carrying out some operations, you can also preview it.

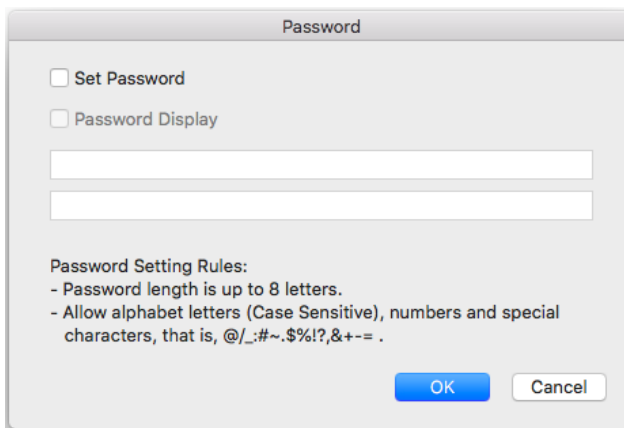
5. Password setting

A startup screen registered with VARICAM series can be protected with a password so that it cannot be deleted by a third person. The password set up here will be required to be entered when performing the next and subsequent version-upgrading.

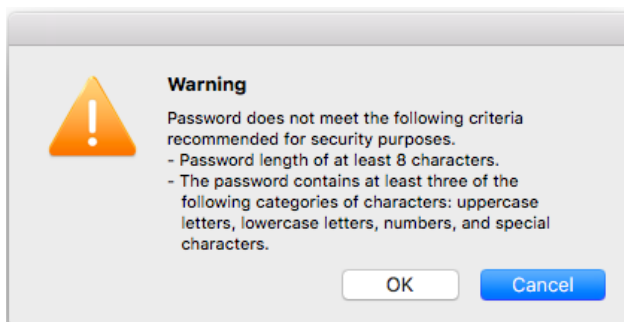
By selecting [Setting] ->[Password] from the menu bar, the password input screen can be displayed.



Set a password using the following window.



If you set a password that does not meet the following criteria, the window below will be displayed. Although you can finish the procedure without correcting your password, it is recommended that you

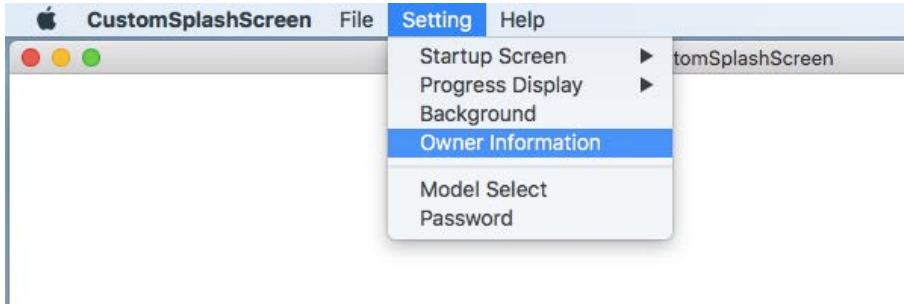


should set a password that meets the criteria.

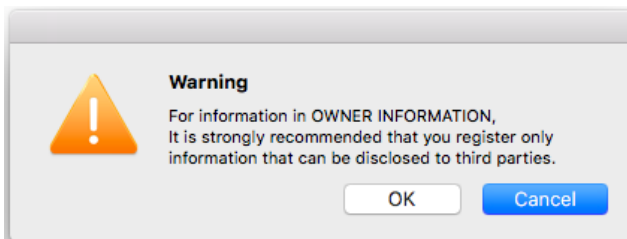
- Password is 8 characters long.
- Password has at least 3 types of the following characters: uppercase letters, lowercase letters, numbers and symbols.

6. Setting the user information

By selecting [Setting] -> [Owner Information] from the menu bar, you can register the user information displayed on the INFO screen of VARICAM series.

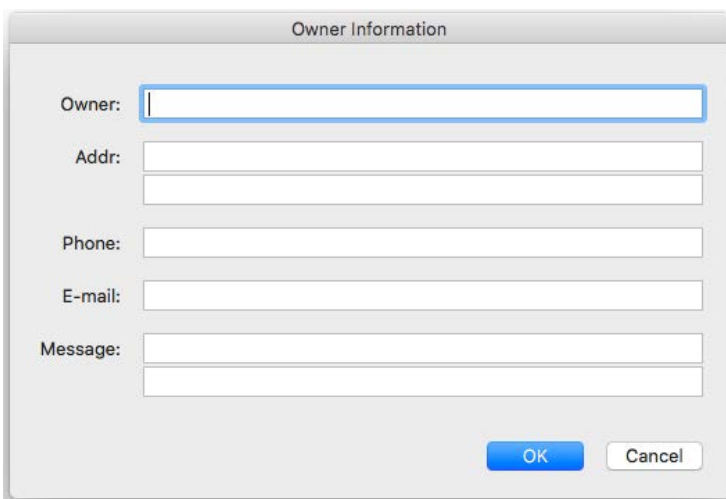


When the user information in the menu is selected, the following dialog box will appear. So read its message carefully and press OK button.



Set the user information using the following window. The items you can register are Owner, Addr (2 rows), Phone, E-mail and Message (2 rows).

The number of letters you can register is 40 letters for Owner, 40 for each row of Addr, 30 for Phone, 50 for E-mail and 40 for each row of Message.

A dialog box titled 'Owner Information'. It contains several input fields: 'Owner:' with a single text box; 'Addr:' with two stacked text boxes; 'Phone:' with a single text box; 'E-mail:' with a single text box; and 'Message:' with two stacked text boxes. At the bottom right, there are 'OK' and 'Cancel' buttons.

<NOTE>

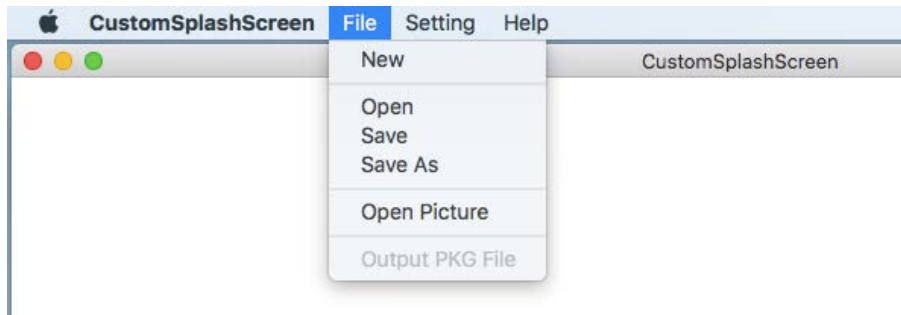
It is recommended that you should check the details again after the setting is completed.

7. Saving the setting values

The settings data can be saved and loaded.

From the menu bar, with [File] -> [Open], it is possible to load the saved values from the file where they are saved. With [File] -> [Save], you can overwrite-save the settings into a file which is currently opened. (If no file is currently opened, they will be saved into a new file.) With [File] -> [Save As], saving them into a different file is possible.

With [File] -> [New], current setting values and their save file name are cleared.



The following are to be saved.

Items	Properties
Background	Color, transparency
Output mode	Applicable models
Owner information	Owner, Address (2 rows), E-mail, Phone, Message (2 rows)
Bar	Y-coordinates, gradation, show/hide Frame – show/hide, color, thickness Gradation – show/hide, height, width, background color (start/end), bar color (start/end)

<NOTE>

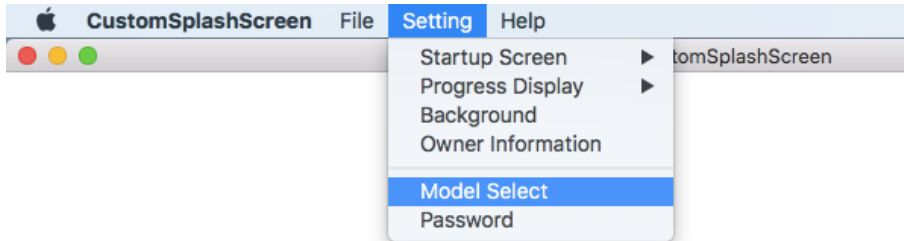
- Please be careful in dealing with the files where the settings data are saved because they contain the owner information and others.
- Please note that the password cannot be saved.

8. Setting the CSS version update software

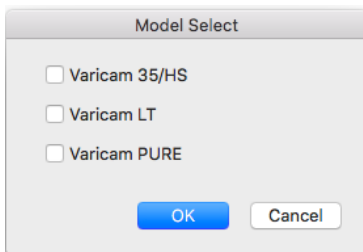
It is possible to output the CSS version update software with which a startup screen is registered.

From the menu bar, with [Setting] -> [Model Select], applicable models can be set.

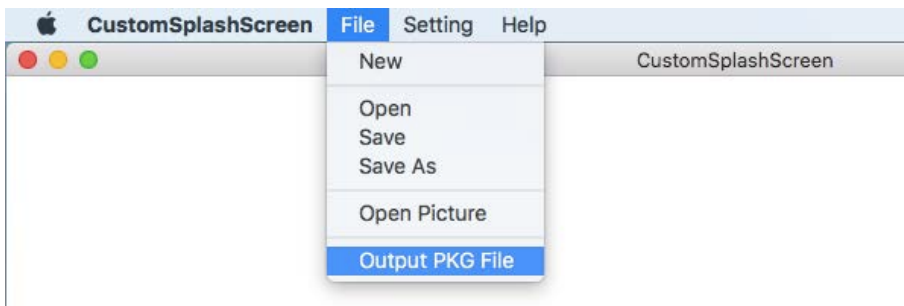
To enable this menu, at least one image needs to be placed.



If Model Select is executed, the screen below will appear. So select the model for which the CSS version update software is created.



From the menu bar, with [File] -> [Output PKG File], the CSS version update software is output.



The window for specifying the output destination will appear. So specify the output directory.

As below, a folder will be created inside the "logo" folder for each selected model in the output destination directory. And a package for CSS version updating will be created further inside that folder.



Varicam35HS



VaricamLT



VaricamPURE

For CSS version updating, **copy the [private] folder** inside each model's folder **to an SD card**.

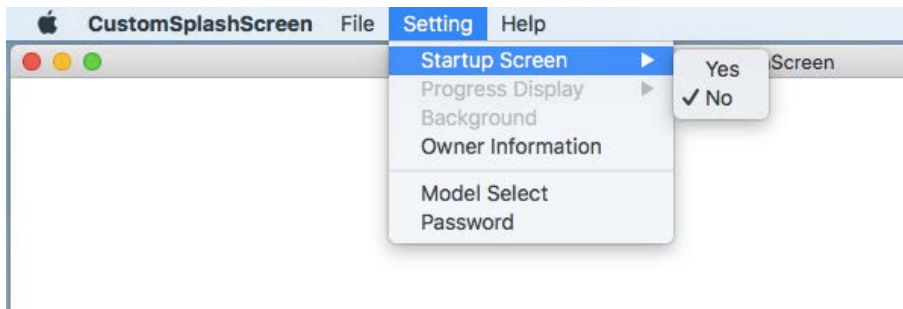
9. Procedure for CSS version updating on VariCam series

The CSS version update process on VariCam series follows the same procedure as standard update firmware.

Insert an SD card which contains the package for CSS version updating into the SD card slot. Press [INFO] button on the VariCam camera body, select [VERSION] tab, and then push the dial.

10. To restore a customized startup screen to its original state

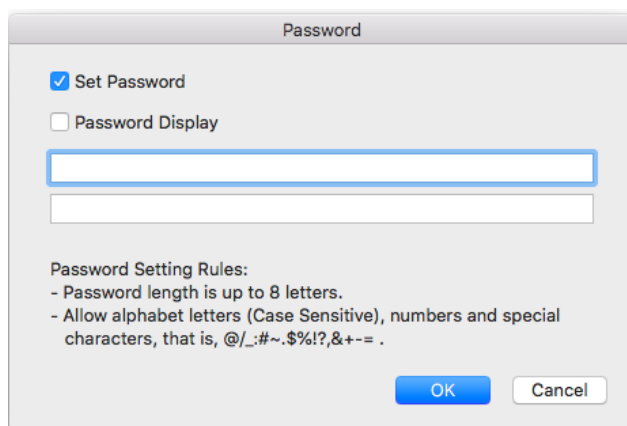
To restore a customized startup screen to its original state, set [Setting] -> [Startup Screen] to "No" from the menu bar, and update the VariCam series using an output package for CSS version updating.



11. Procedure for clearing a set password

On the password setting screen below, delete the password while [Set Password] is checked. Then uncheck [Set Password] and click [OK].

And update the VariCam series using an output package for CSS version updating.



12. Cautionary notes

- 1) The screen images displayed on the screen have different colors from what actually appear on the LCD. In addition, while screen images are displayed in full color, the LCD has poor gradations and cannot display a clear gradation, etc.
- 2) Regarding the gradation feature of progress bar, if its start color and terminal color are close, the gradations will look separated by boundary lines between the colors when the settings are loaded into VariCam.
- 3) Panasonic assumes no responsibility for any damage incurred on the basis of information registered for [Owner Information].
- 4) You may not modify this software or perform reverse engineering which involves decompiling or disassembling on this software.
- 5) When you repair, transfer or scrap the PC into which this software is installed, it is recommended that you should uninstall this software and delete the related files, or initialize the PC.
- 6) When you use this software on a backup unit, it is recommended that you should uninstall this software and delete the related files after you finish using it on the unit.