

Integrated Software Operation Manual (Common)

Contents

Integrated Software Operation Manual (Common)	1
Preface	2
Trademarks and registered trademarks.....	2
Regarding the Content of These Files	2
Overview	3
Operational Requirements.....	4
Supported Devices	5
Regarding Network and Security	6
Restrictions Related to Connected Devices	6
Software Installation	7
Precautions for PCs with Auto-Tracking Software Installed	7
Precautions When Installing	7
When updating to a new version.....	8
Software Installation Procedure.....	11
Software Uninstallation Procedure	14
Software Startup and Exit	17
Software Startup.....	17
Software Exit	18
Software Use Flow	19
About the Management Window	19
Displaying the operation GUI.....	21
Administrator Account Registration	23
Login Operation.....	24
Device Registration.....	25
Device Operation.....	25
Screen Explanation	26
Basic Screen Structure	26
Administrative tools.....	29
Collecting operation logs of this software	29
Software Information Related to This Software	30

Preface

Trademarks and registered trademarks

- Microsoft®, Windows®, Windows® 10, Windows® 11 and Microsoft Edge® are either registered trademarks or trademarks of Microsoft Corporation in the United States and other countries.
- Apple, Mac, macOS, iPadOS, iPhone, iPad and Safari are trademarks of Apple Inc., in the United States and other countries.
- Android™ and Chrome™ browser are trademarks of Google LLC.
- Intel® and Intel® Core™ are trademarks or registered trademarks of Intel Corporation in the United States and other countries.
- Other names of companies and products contained in the text may be trademarks or registered trademarks of their respective owners.

Regarding the Content of These Files

- The illustrations and depictions shown in these files may differ from actual circumstances.
- These files refer to “personal computer” as “PC.”

Overview

- This software is a new software platform that integrates all of the different software for our remote camera systems. This free base software can be combined with paid plugins, which we are planning on releasing moving forward, and can be customized to meet a variety of purposes. Using this software will allow you to construct a remote camera system that is both easy to use and that will improve jobsite efficiency.
- Installing this software will allow you to use the functionality of the free base software. The base software includes functionality to manage devices (Device View function) and remote camera control functionality (PTZ Control function).
 - With the Device View function, you can:
 - Register, edit, and delete devices
 - Display device information
 - Manage device power
 - Auto-detect cameras on the network
 - Configure camera network settings
 - Update camera firmware
 - Batch register camera administrators
 - Activate camera NDI|HX/SMPTE ST 2110
 - With the PTZ Control function, you can:
 - Pan, tilt and zoom cameras
 - Register, call and delete camera presets, set the speed of those presets
 - Adjust camera image quality
 - Control auto-tracking functionality for cameras that have auto-tracking built in
 - Control camera power ON/Standby
- The functionality of paid plugins will be useable after activating them in the base software.
- As both the base software and the paid plugins are compatible with server-based operation, it is possible to display a GUI and operate them on another PC connected to the same network.
- As we have an external API to control the functionality of this software from an external system, flexible system construction that combines external systems is possible. * To be offered with future software updates

Operational Requirements

The following requirements must be met to use this software.

■ Install PC

- OS

- Windows Server 2022

- Windows 11

- Windows 10 64bit (Version 21H2 or later)

- Hardware

- CPU: Intel Core 7th generation (Kaby Lake) or later

- RAM: 8GB or more

- Display: 1920 x 1080 or higher

- Storage: 2GB or more free space

- Software

- Web browser: Microsoft Edge, Google Chrome

*The hardware requirements for the install PC are applicable if you are using functions of the free base software.

For the hardware requirements for paid plugins, check the operation requirements that are listed in each paid plugin's manual.

*Ensure that you use this software with the Windows OS installed on the C drive of the install PC.

■ Client (Browse device)

- OS

- Windows 11

- Windows 10 64bit (Version 21H2 or later)

- macOS 13 (Ventura) or later

- iPad OS 16 or later

- Hardware

- Display: 1920 x 1080 or higher (Other than iPad)

- Software

- Web browser: Microsoft Edge, Google Chrome

<NOTE>

- If you use Google Chrome, download it from the Google LLC website and install it.

Supported Devices

This software supports the following devices (as of June 2025).

■ Panasonic network compatible cameras

PTZ cameras

- AW-UE160/AW-UE163
- AW-UE150A/AW-UE158/ AW-UE 148
- AW-UE150/AW-UE155/AW-UN145
- AW-UE100
- AW-UE80/AW-UE83
- AW-UE70/AW-UN70/AW-UE65/AW-UE63
- AW-UE50/AW-UE53
- AW-UE40/AW-UE43
- AW-UE30
- AW-UE30
- AW-UE70/AW-UN70/AW-UE65/AW-UE63
- AW-UE20
- AW-UE4
- AW-HE145
- AW-HE70/AW-HN70
- AW-HE65/AW-HN65/AW-HE58/AW-HE48
- AW-HE42/AW-HE68/AW-HE75
- AW-HE40/AW-HN40/AW-HE38/AW-HN38/AW-HE35
- AW-HE20
- AW-UR100
- AW-HR140

Box Style Camera

- AW-UB10
- AW-UB50

<NOTE>

- Refer to the web sites for this software below for information on the latest compatible models.

Japanese: https://connect.panasonic.com/jp-ja/products-services_proav

English: <https://pro-av.panasonic.net/en/>

- Ensure that your devices are running on the latest firmware. Firmware can be downloaded from the web sites listed above.
- Some of the models listed above may not be sold in some regions.

Regarding Network and Security

As this software is used over a PC connected to a network, the following risks are a possibility.

- Information leaks through the PC
- Unauthorized operation of the PC or this software by third-parties with ill intent
- Disturbance or suspension of operation of PCs or this software by third-parties with ill intent

To mitigate these risks, we ask that customers take on responsibility to ensure sufficient network security measures that include the following. Our company will bear no responsibility related to any of these risks.

- Use a firewall, and use the PC on networks that you know are secure.
- Ensure that scans for viruses and unauthorized programs are being conducted regularly on the PC, and that these risks are being removed if found.
- Set a password for the PC and limit the users who can login to protect against unauthorized attacks.
- Do not install the PC in a place where it can be easily accessed by a third party, and implement anti-theft measures.

Restrictions Related to Connected Devices

- We recommend that the network connecting the install PC and the devices such as remote cameras be of the same segment. If connecting with different segments, phenomenon reliant on the settings of individual network devices may occur, so ensure that you conduct sufficient testing before beginning operations.
- We recommend a wired network connection between the install PC and devices such as remote cameras. If connected wirelessly, this software may experience delays in display or in response to operations.
- Connect remote cameras with HTTP connection settings. HTTPS connections are not supported.

Software Installation

Precautions for PCs with Auto-Tracking Software Installed

This software cannot be run on PCs which have the AW-SF200/AW-SF100 Web appli ver. auto-tracking software installed. If installing this software on PCs which have the AW-SF200/AW-SF100 Web appli ver. auto-tracking software installed, uninstall the auto-tracking software with the following procedure.

1. Open the Windows [Apps & features] screen.
2. Select and uninstall the [Node.js] from the [Apps & features] screen.
3. Select and uninstall [PostgreSQL 11] from the [Apps & features] screen.
4. Select and uninstall [Panasonic Auto Tracking Server] from the [Apps & features] screen.
5. Restart your PC.

<NOTE>

- For PCs with the AW-SF100 Standalone ver. installed, you do not need to uninstall the auto-tracking software.

Precautions When Installing

- Perform installations with a Windows Administrator account.
- If you are asked to verify the user account controls on your Windows user account during installation, click [OK].

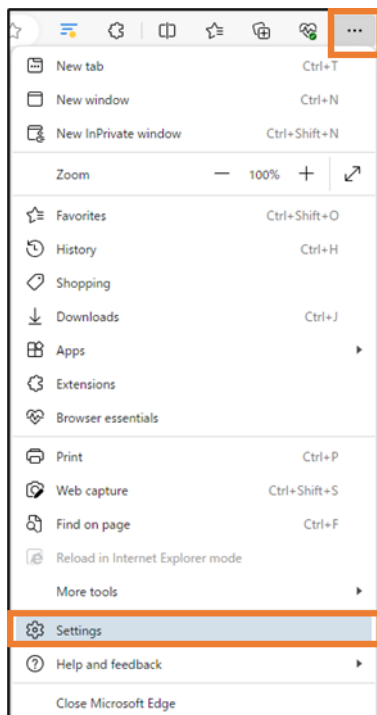
When updating to a new version

When updating this software to a new version, there is no need to uninstall the old version. The software will be updated automatically when you install a new version.

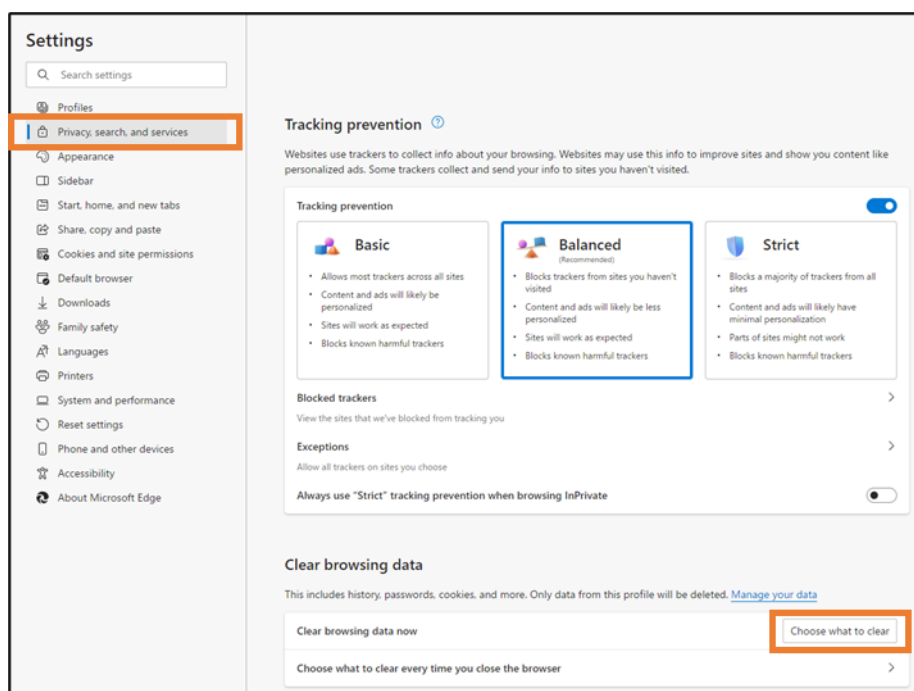
After updating, please clear the cache of your web browser before using the new version of the software. If you run the new version without clearing the cache, malfunctions may occur.

Steps to clear Microsoft Edge cache

1. Click the menu button ... at the top right of the Microsoft Edge screen and select "Settings".



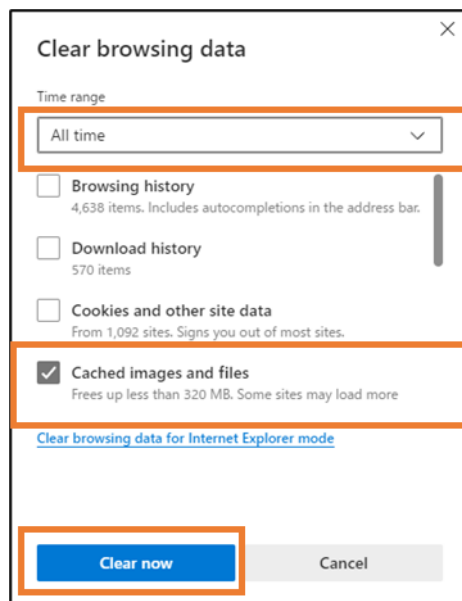
2. On the Microsoft Edge settings screen, select "Privacy, search, and services" and click "Choose what to clear" under "Clear browsing data."



3. On the "Clear browsing data" screen, configure the following settings and click the "Clear data" button to clear the cache.

Time range: All time

Cached images and files: Check ON




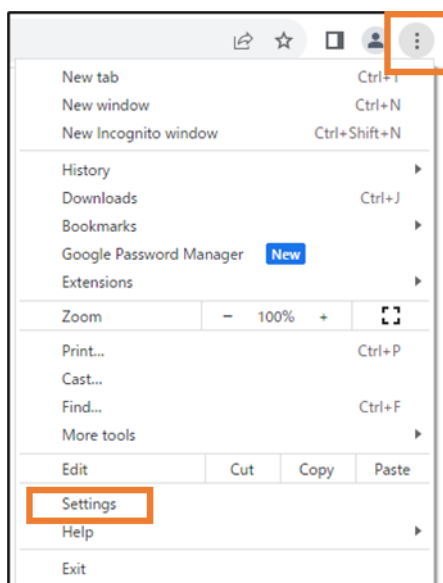
<NOTE>

The above procedure for clearing the cache is for Microsoft Edge version 120.0.2210.121.

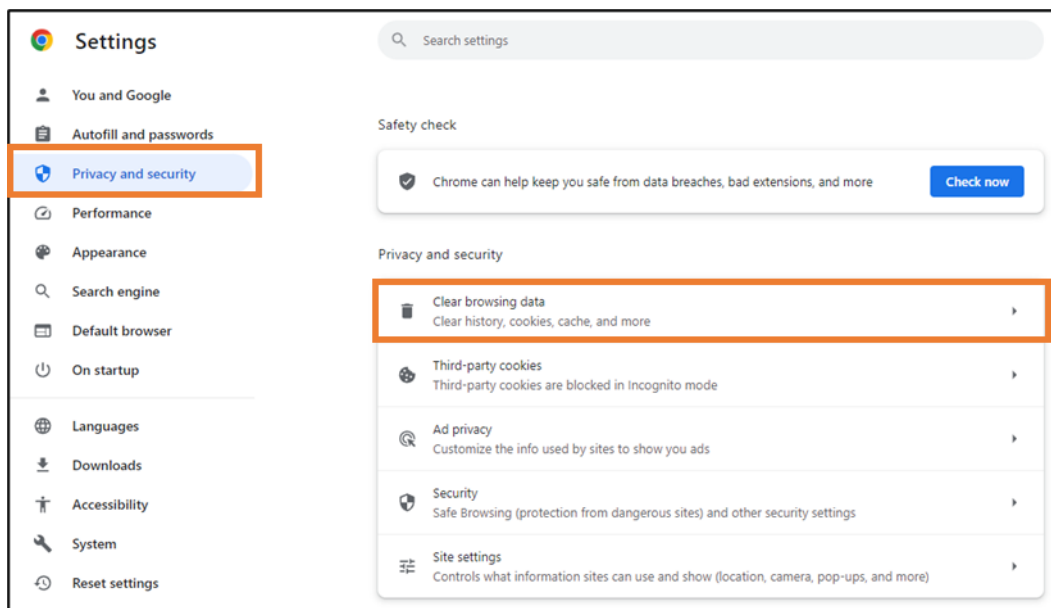
The display may differ depending on the version of Microsoft Edge.

Steps to clear Google Chrome cache

1. Click the menu button  at the top right of the Google Chrome screen and select "Settings".



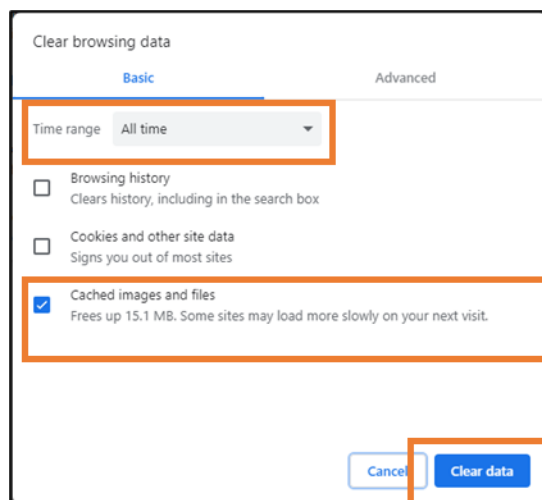
2. On the Google Chrome settings screen, select "Privacy and security" and then "Clear browsing data."



3. On the "Clear browsing data" screen, configure the following settings and click the "Clear data" button to clear the cache.

Time range: All time

Cached images and files: Check ON



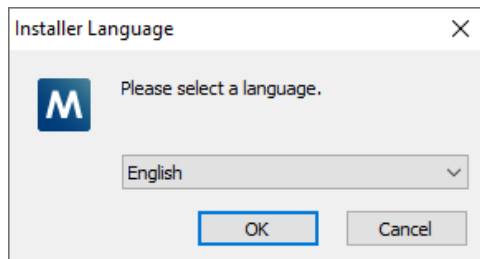
<NOTE>

The above procedure for clearing the cache is for Google Chrome version 119.0.6045.123.

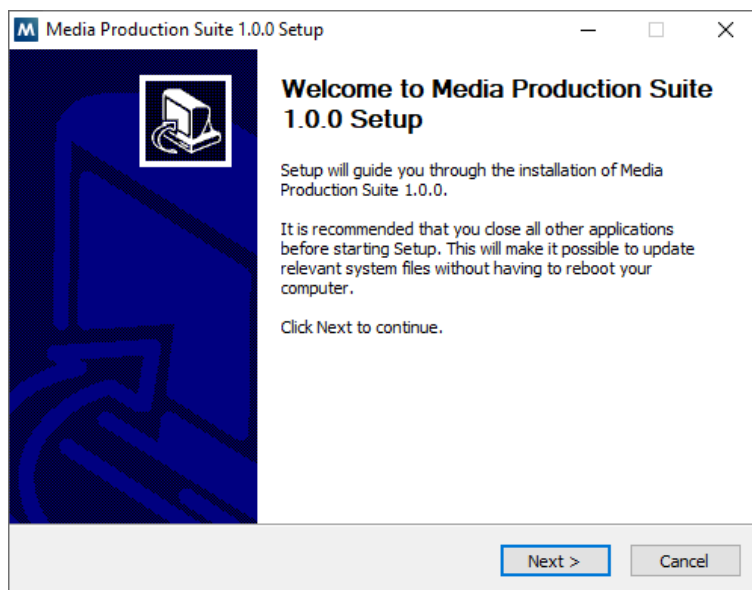
The display may differ depending on the version of Google Chrome.

Software Installation Procedure

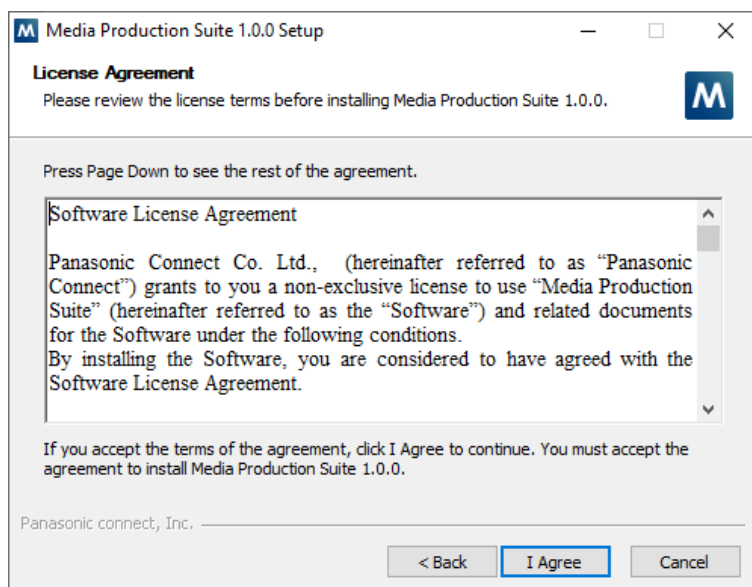
1. Double-click Setup.exe to run the installer. Select your language and click OK.



2. Continue the process by clicking the “Next” button.



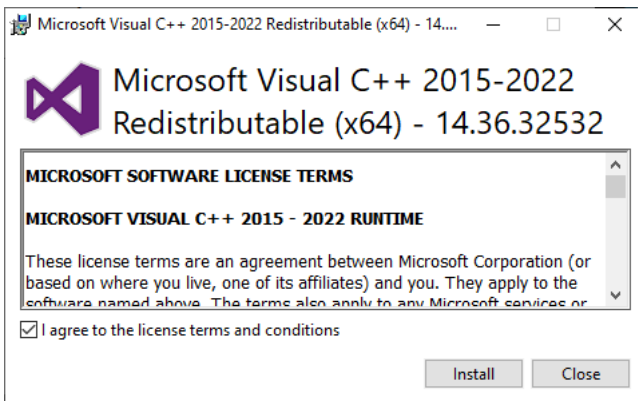
3. The Usage Agreement will be displayed, so confirm the content and if there are no problems, click the “I Agree” button.



4. The runtime required to run the software will be installed.

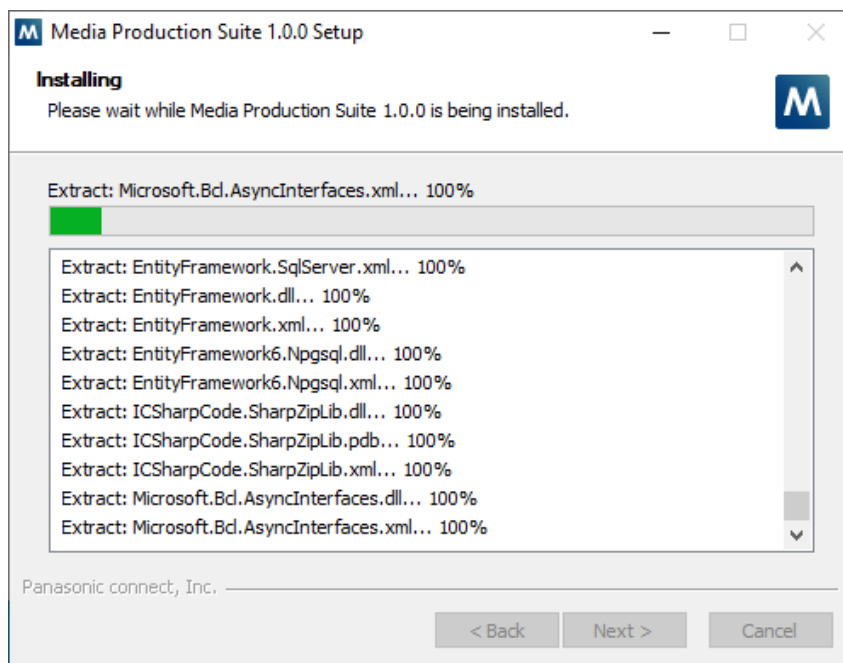
Depending on the state of your PC, your PC may be restarted after the runtime installation.

If your PC is restarted, please run the installer again after the restart.



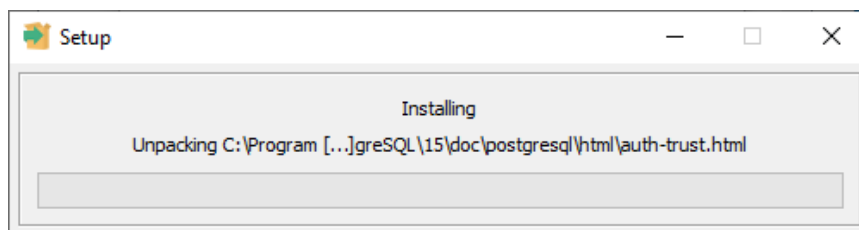
5. The installation will proceed.

When you install this software for the first time, it will take some time to complete as the software required for execution (Erlang OTP, RabbitMQ, PostgreSQL) will also be installed.

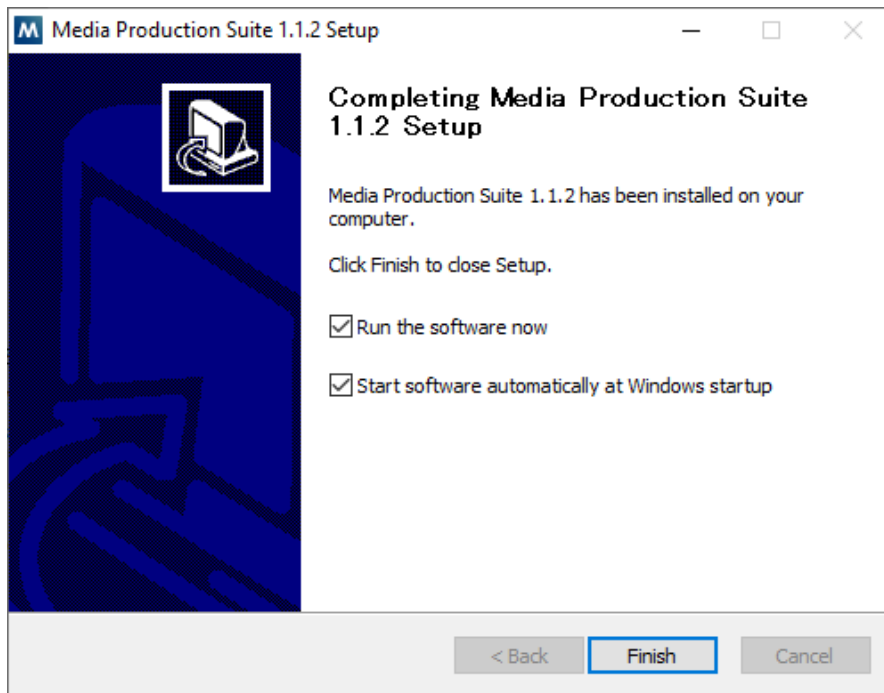


6. If PostgreSQL is not installed, PostgreSQL installation will start automatically.

If PostgreSQL is already installed, the installation of PostgreSQL will not start, so please proceed to step 8.



7. After installation, the following screen will be displayed.



Check "Run the software now" to select whether to start this software after installation is complete.

Check ON: This software will start after installation.

Check OFF: This software will not start after installation.

Check "Start automatically at Windows startup" to select whether this software starts automatically when Windows starts.

Check ON: Set this software to start automatically when Windows starts.

Check OFF: Set this software not to start automatically when Windows starts.

If you select OFF (do not start automatically), you will need to manually start the software by following the steps described in "Software Startup" in this document after Windows starts.

Click the "Finish" button to finish the installation.

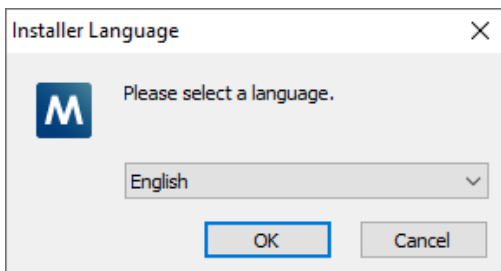
If "Run the software now" is checked, the Media Production Suite software will start up after installation is complete, and an icon will appear in the task tray and an administration window will appear on the desktop.

For further operations, please refer to "[Software Startup and Exit](#)".

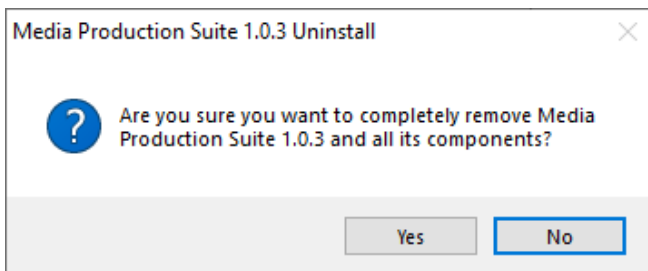
Software Uninstallation Procedure

For Windows 10, Windows Server 2022

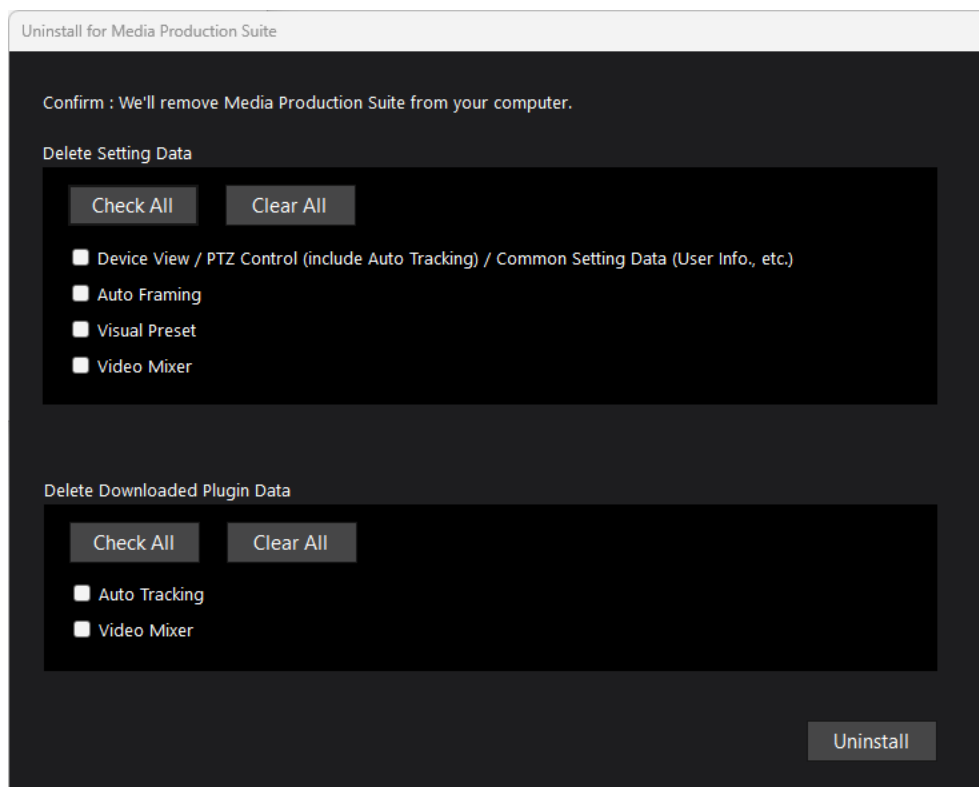
1. Right-click the Windows icon on the Windows taskbar and select "Apps and Features" in the menu that appears.
2. Select "Media Production Suite *.* (*.* is the version of the installed app)" from the apps displayed on the "Apps and Features" screen and click "Uninstall".
3. A confirmation message "This app and its related info will be uninstalled." will be displayed, so click "Uninstall".
4. If a confirmation screen for executing uninst.exe appears, select "Yes".
5. A language confirmation screen will be displayed, so select the desired language and click "OK".



6. A confirmation screen for uninstallation will be displayed, so click "Yes".



7. A confirmation screen will appear.



[Delete Setting Data]

- Device View/PTZ Control(include Auto Tracking)/Common Setting Data(User Info. Etc.)

When the check is ON, the following setting data will be deleted.

- Device information registered with the Device View function
- PTZ Control function operation settings (such as auto tracking operation settings)
- Account information for this software
- Registered face data

- Auto Framing

When the check is ON, the following Auto Framing setting data will be deleted.

- Target frame (composition) data
- Auto Start Area, Mask Area settings
- Detailed settings and other setting data

- Visual Preset

When the check is ON, the following Visual Preset setting data will be deleted.

- Registered background image
- Registered camera icon
- Registered Call Trigger icon

- Video Mixer

When the check is ON, the following Video Mixer setting data will be deleted.

- Multi View screen layout and view settings
- I/O Setting system format, Input settings, Output settings
- Movie files/still image files registered on the Media screen
- Scenes registered on the Scene screen
- AI Keying Background images registered on the AI Capture screen

[Delete Downloaded Plugin Data]

- Auto Tracking

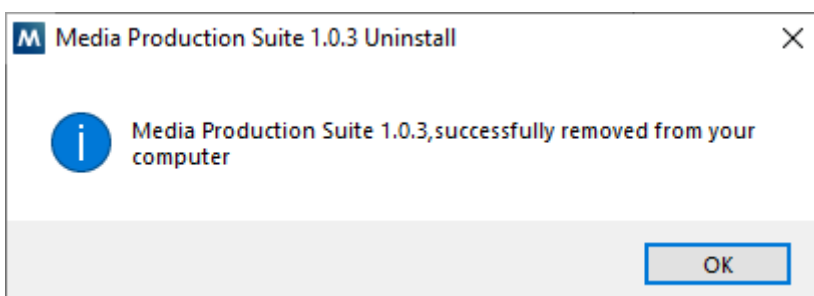
When the check is ON, downloaded execution data of Auto Tracking plugin will be deleted.

- Video Mixer

When the check is ON, downloaded execution data of Video Mixer plugin will be deleted.

*License data for activated paid plugins will not be deleted.

8. Click the [Uninstall] button on the confirmation screen to uninstall. If the following screen is displayed, the uninstallation is complete.



For Windows 11

1. Right-click the Windows icon on the Windows taskbar and select "Installed apps" in the menu that appears.
2. Select "Media Production Suite *.*.* (*.*.* is the version of the installed app)" from the apps displayed on the "Installed apps" screen and click "Uninstall".
3. The subsequent steps are the same as from step 3 in "For Windows 10, Windows Server 2022" above.

<NOTE>

- If you want to move the license data to another PC, you will need to perform the deactivation procedure while this software is installed.

For the deactivation procedure, please refer to "Deactivating the License" in the Information function operating manual.

Software Startup and Exit


Software Startup

If you check "Start automatically at Windows startup" in step 6 of "Software Installation Procedure", this software will automatically start when Windows starts.

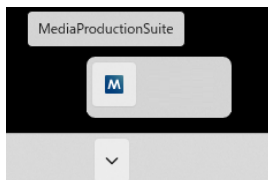
If you uncheck "Start automatically at Windows startup", this software will not start automatically, so please start it using one of the following steps.

- Open "Media Production Suite" in the Windows start menu, select the "Media Production Suite" shortcut
- Double-click the "Media Production Suite" shortcut on the desktop

When starting the software, a confirmation screen for Windows administrator privileges will be displayed, so click OK to allow it to start.

When the software starts, the software icon  will appear in the Windows task tray and the management window will appear on the desktop (if the management window display is turned on).

- Software icon in task tray



- Management window

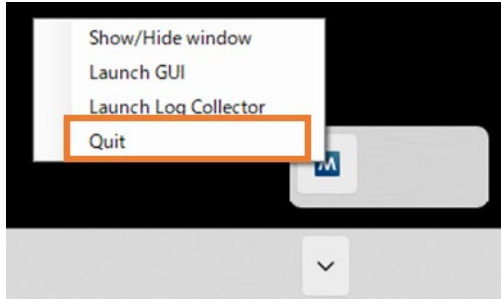


For information on how to operate the management window and how to display and operate the operation GUI, please refer to the "[Software Use Flow](#)" section.

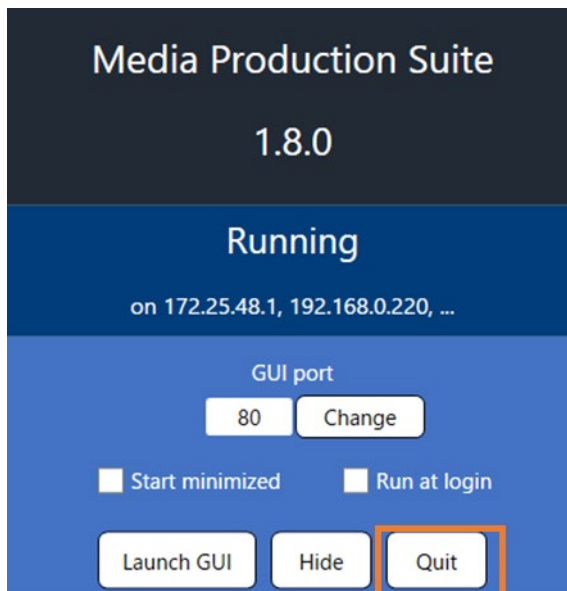
Software Exit

To exit this software, please do one of the following.

- Right-click the icon of this software in the Windows task tray to display the menu and select [Quit].



- Click the "Quit" button in the software management window.



Software Use Flow

About the Management Window

By default, when you start the software, a management window will be displayed on the desktop.

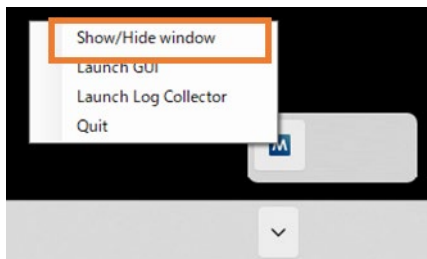
The management window allows you to do the following:

- Check the software version and running status
- Set the port number to be used and startup operation settings
- Display the operation GUI
- Exit the software

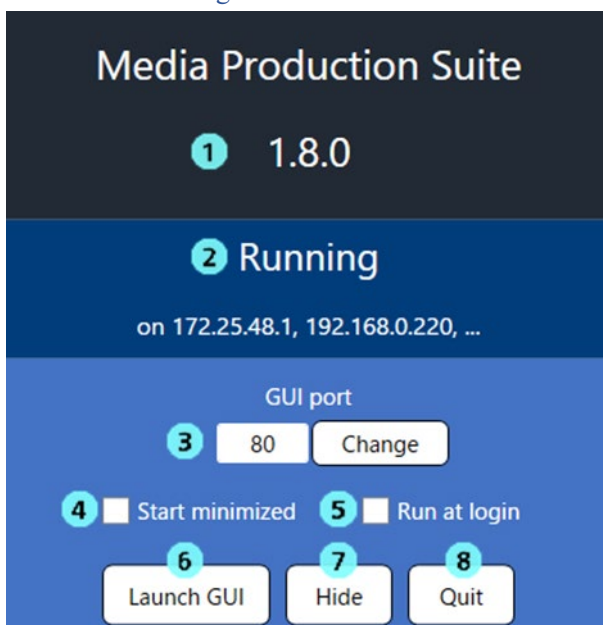
How to display the management window

If the management window is not displayed, you can display it by following the procedure below.

- Right-click the software icon in the Windows task tray to display the menu and select [Show/Hide window].



Explanation of the management window



1. Version information display field

Displays the version of this software.

2. Status display field

Displays the running status of this software.

- Display when operating normally

Status	Explanation
Starting Database Check	Software startup process in progress (connecting to database service)
Starting Receive Message	Software startup process in progress (connecting to message service)
Starting Activate Plugins	Software startup process in progress (internal module startup operation)
Running on *.*.*.*, *.*.*.*	Software is working properly on *.*.*.* will show the IP address of the PC's network adapter.

- Display when abnormal operations occur

Status	Explanation
Error GUI port is not available	The Apache service cannot start because the port number for operation GUI is unavailable. Change the port number in "3. Operation GUI port number setting field."
Starting Database service	The database service (PostgreSQL) required to run this software has not started, so it is currently starting up. If it starts up successfully, it will move on to normal operation. If it cannot start up successfully for some reason, the following Fail message will be displayed.
Starting Message service	The message service (RabbitMQ) required to run this software has not started, so it is currently starting up. If it starts up successfully, it will move on to normal operation. If it cannot start up successfully for some reason, the following Fail message will be displayed.
Starting Receive Message *	The message service (RabbitMQ) required to run this software failed to start, and a retry is being performed. The * at the end indicates the number of retries. If the software starts successfully, it will move on to normal operation. If the software cannot start successfully for some reason, the following Fail message will be displayed.
Starting GUI service	The Apache service required to run this software has not started, so it is currently starting up. If it starts up successfully, it will move on to normal operation. If it cannot start up successfully for some reason, the following Fail message will be displayed.

<p>Fail</p> <p>*****</p>	<p>An abnormality has occurred in the operation of this software for some reason.</p> <p>Refer to Collecting operation logs of this software in this manual to acquire the operation log, then contact our service department.</p>
--------------------------	--

3. Operation GUI port number setting field

Set the port number to be used when displaying the operation GUI in a web browser.

Enter the port number in the numeric input field and click the Change button to set the port number.

<NOTE>

The following port numbers cannot be used:

1337, 1338, 1437, 2000 ~ 2010, 5672, 8756, 10160, 15672, 20060

In addition to the above, there may be port numbers that cannot be used due to web browser restrictions.

If a port number is unavailable, the status display field will show Error when you click the Change button, so please change to another port number.

4. Management window display settings field

This sets whether or not to display the management window when this software starts.

Checked: The management window will not be displayed when this software starts.

Checked: The management window will be displayed when this software starts.

5. Software automatic startup settings field when logging into Windows

Select whether or not this software will start automatically when you log into Windows.

Checked: The software will start automatically when you log into Windows.

Checked: The software will not start automatically when you log into Windows.

6. Operation GUI display button

Click the button to display the operation GUI in the OS's default web browser.

7. Management window hide button

Click the button to hide the management window.

8. Software exit button

Click the button to exit this software.

Displaying the operation GUI

This software is operated by displaying the operation GUI on a web browser.

As long as it is on the same network as the installed PC, you can access the operation GUI using a web browser from another PC and operate it remotely.

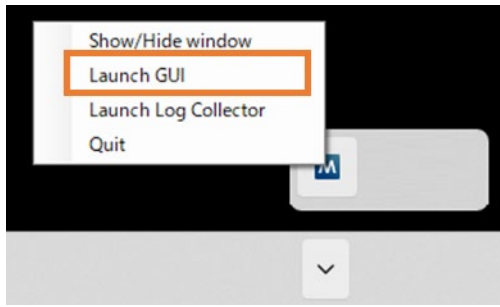
The operation GUI is displayed with the following procedure.

For install PC

- When the OS default web browser is Microsoft Edge or Google Chrome

You can display the operation GUI from one of the following operations:

- Right-click on the icon of this software in the Windows task tray to display the menu and select "Launch GUI".



- Click the "Launch GUI" button in the software's management window.



- When the OS default web browser is other than Microsoft Edge or Google Chrome

1. Start a web browser (Microsoft Edge or Google Chrome).
2. Enter the URL below into the web browser's address bar.

<http://localhost/MediaProductionSuite/Base/>

If the GUI port number is set to something other than 80, you must specify the port number.

(Example: 8080) <http://localhost:8080/MediaProductionSuite/Base>

* We recommend that you bookmark the login screen after the GUI is displayed.

For Client PC

1. Start a web browser (Microsoft Edge or Google Chrome).
2. Enter the URL below into the web browser's address bar.

[http://\[IP address of install PC\]/MediaProductionSuite/Base/](http://[IP address of install PC]/MediaProductionSuite/Base/)

(Example: <http://192.168.0.200/MediaProductionSuite/Base>)

If the GUI port number is set to something other than 80, you must specify the port number.

(Example: 8080) <http://192.168.0.200:8080/MediaProductionSuite/Base>

* We recommend that you bookmark the login screen after the GUI is displayed.

If a web browser is not displayed correctly, please press the "F5" key to refresh the screen.

After installing this software, the Administrator Account Registration screen will be displayed when the operation GUI is displayed in the initial state, and once an administrator account has been registered, the operation GUI will display the login screen.

When the Administrator Account Registration screen is displayed:

Follow the “Administrator Account Registration” instructions and register an administrator account.

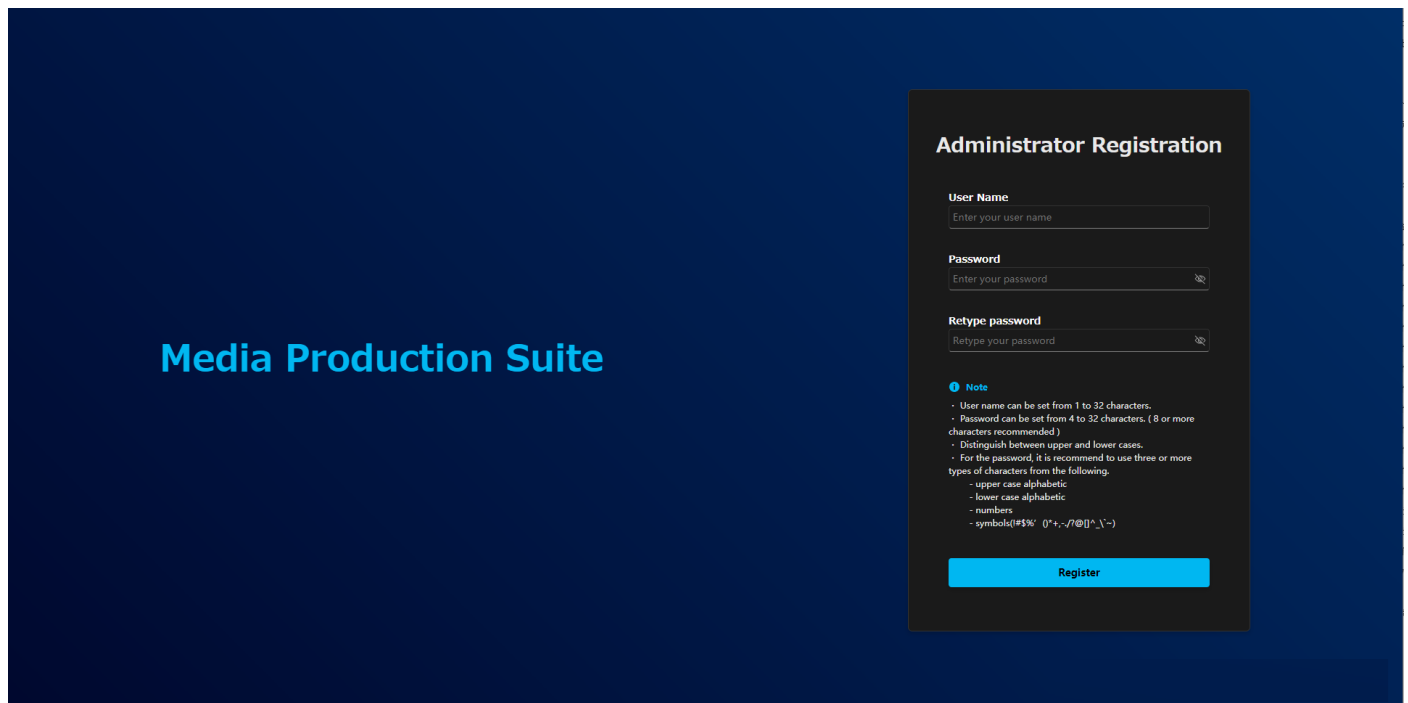
When the Login screen is displayed:

Follow the “Login Operation” instructions and login.

Administrator Account Registration

After installing this software, the Administrator Account Registration screen will be displayed when the GUI is displayed in the initial state.

You can register an administrator account by using the procedure below.



1. Enter a name for the account in the [User Name] field.

Characters available:

- Upper-case letters
- Lower-case letters
- Numbers
- Special characters (~!@#\$\$%^&*()_+¥|} {}[<>.,/?`-')

Number of characters

- Minimum 1, maximum 32

2. Enter a password in the [Password] and [Retype Password] fields.

Characters available:

- Upper-case letters
- Lower-case letters
- Numbers

- Special characters (~!@#\$\$%^&*()_+¥} {}[<>./?'-')

Number of characters

- Minimum 4, maximum 32

For security reasons, it is recommended that passwords be set in accordance with the following rule.

Recommended rule

- Passwords should include at least three of the four available character types above and should be at least eight characters long

3. Click the [Register] button to register the administrator account.

A warning message will be displayed if the password does not comply with the above recommended rules. If you wish to change the password, click the [Cancel] button and then make the desired changes. If you understand the security risk and wish to continue anyway, click the [OK] button to complete the process.

<NOTE>

- The administrator account will be registered as the account with role of Administrator.

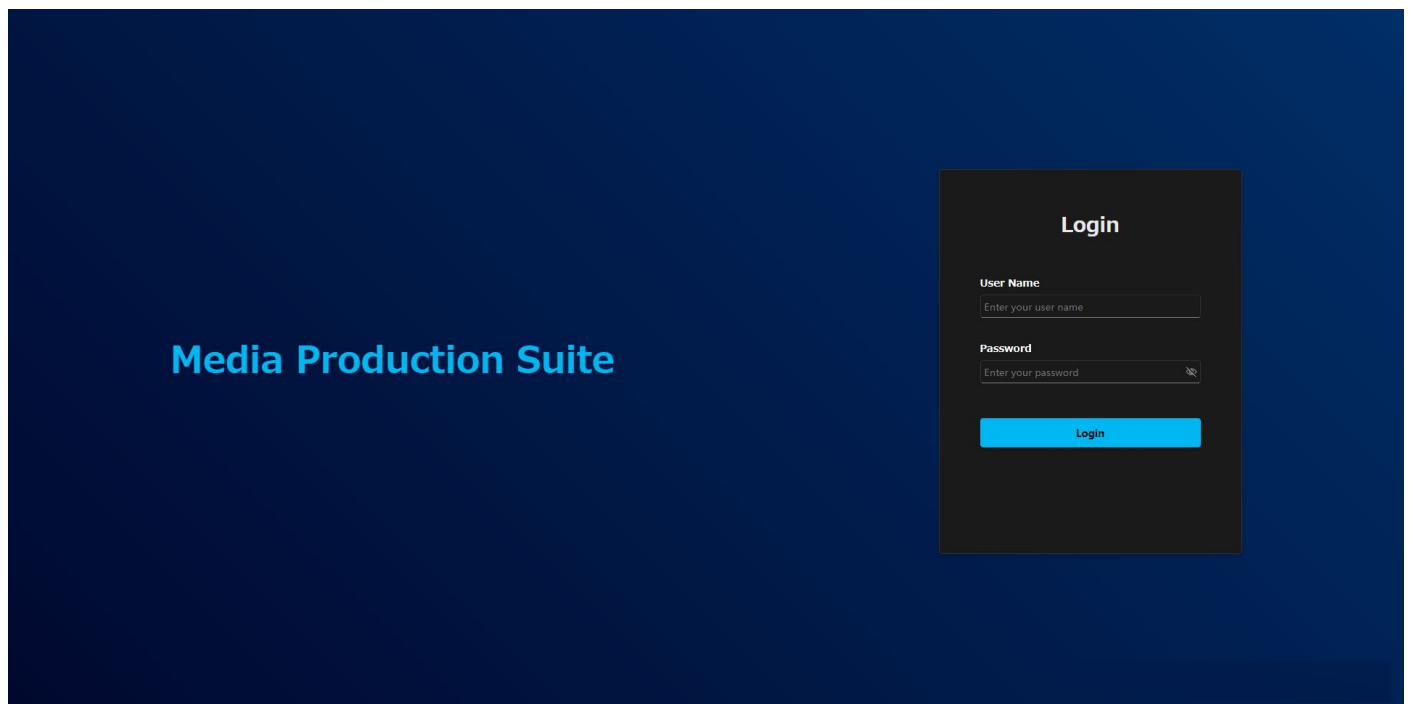
Account information can be changed with the Setting function. For details, refer to the Setting function operation manual. To display the Setting function operation manual, click the [Help] button and select [Setting] from the menu.

Login Operation

Once an administrator account has been registered, the GUI will display the Login screen.

Enter the account name in the User Name field and the password into the Password field, then click the [Login] button to login and display the operation screen.

Refer to the “Screen Explanation” part of this document for details on the operation screen.



Device Registration

In order to operate a device with this software, the device first needs to be registered in this software.

Device registration is performed in the Device View function. For details, refer to the Device View function operation manual.

To display the Device View function operation manual, click the [Help] button and select [Device View] from the menu.

Device Operation

Registered devices can be operated from this software.

The free base software includes the PTZ Control function to manage remote cameras.

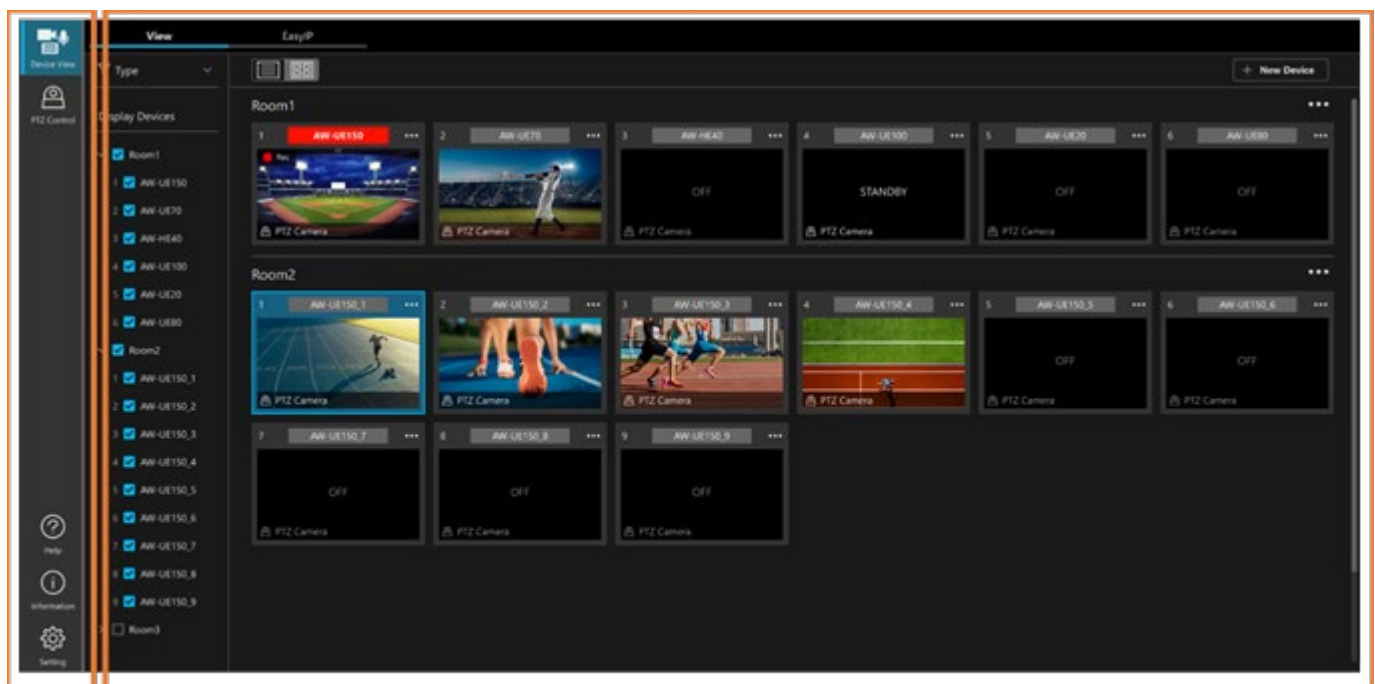
For details on this function, refer to the PTZ Control Function operation manual. To display the PTZ Control function operation manual, click the [Help] button and select [PTZ Control] from the menu.

Screen Explanation

Basic Screen Structure

We will explain the basic structure of screens.

For details on the screen for each function, refer to the operation manual listed in each function's button explanation.



Function selection area

Operation screen area

- Operation screen area

The Operation screen for the function selected in the Function selection area will be displayed.

- Function selection area



1. Main function selection area

Functions useable in this software are shown in the area with [Button + Function Name]. Clicking the button will change the Operation screen to that function.

With the free base software installed, the [Device View] and [PTZ Control] buttons will be displayed and those functions will be useable.

If a compatible remote camera is available, the [Auto Framing] button will also be displayed and the function will be available.

If you activate a license for a paid plugin and new functionality becomes useable, a button for that functionality will be added to this area.

- Device View button

Clicking the button will change the Operation screen to the Device View function screen.

The Device View functionality offers the ability to display a list of devices and manage them. From this screen, you can register, edit, and delete devices and manage the power of devices. Additionally, you can use the EasyIP Setup Tool Plus functionality in this function.

For details on this function, refer to the Device View function operation manual displayed when clicking the [Help] button and selecting [Device View] from the menu.

- PTZ Control button

Clicking the button will change the Operation screen to the PTZ Control function.

The PTZ Control function offers functionality specific to the operation of remote cameras. From this screen, you can pan, tilt and zoom remote cameras, and control camera presets and image quality.

For details on this function, refer to the PTZ Control function operation manual displayed when clicking the [Help] button and selecting [PTZ Control] from the menu.

- Auto Framing button

Clicking the button will change the Operation screen to the Auto Framing function.

The Auto Framing function provides high-quality auto tracking in cooperation with remote cameras that have built-in auto tracking function.

For details on this function, refer to the Auto Framing function operation manual displayed when clicking the [Help] button and selecting [Auto Framing] from the menu.

2. Help button

This button displays the operation manuals for this software in a web browser.

Operation manuals are divided based on function. Clicking the Help button will display a menu that allows you to select a function. Selecting a function from this menu will display the operation manual for that function.

The following menu options will be available with the installation of the free base software.

Common: Displays the operation manual (this document) for the basic elements of this software.

Device View: Displays the operation manual for the Device View function.

PTZ Control: Displays the operation manual for the PTZ Control function.

Auto Framing: Displays the operation manual for the Auto Framing function.

Information: Displays the operation manual for the Information function.

Setting: Displays the operation manual for the Setting function.

If you activate a license for a paid plugin and new functionality becomes useable, a menu option to display the operation manual for that functionality will be added.

3. Information button

Clicking the button will change the Operation screen to the Information function.

From the Information screen, you can display the version information for this software or activate paid plugins.

For details on this function, refer to the Information function operation manual displayed when clicking the [Help] button and selecting [Information] from the menu.

4. Setting button

Clicking the button will change the Operation screen to the Setting function.

The Setting screen enables you to configure settings for the operation of this software.

For details on this function, refer to the Setting function operation manual displayed when clicking the [Help] button and selecting [Setting] from the menu.

Administrative tools

Collecting operation logs of this software

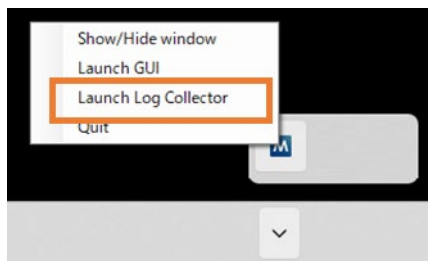
You can collect operation logs of this software using the log collection tool included with this software.

Please use this tool when making inquiries about software not starting up properly.

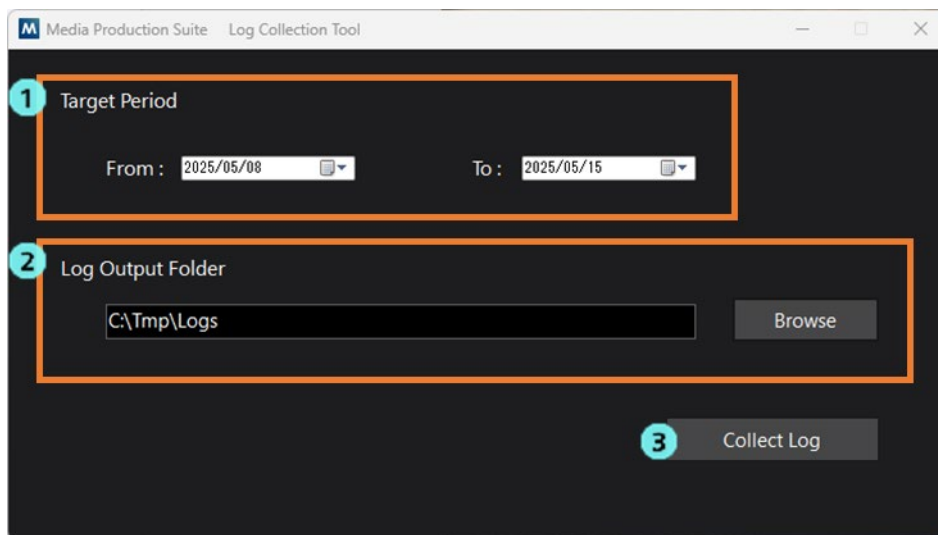
Procedure for starting the log collection tool

You can launch the log collection tool with the following procedure.

- Right-click the software icon in the Windows task tray to display the menu and select [Launch Log Collector].



How to use the log collection tool



1. Use the From and To calendars in the Target Period field to set the period during which logs will be output.
2. Click the Browse button in the Log Output Folder field to set the log output folder.
3. Clicking the Collect Log button will output a zip file of log files.

The log file will be named “MPS_Log_[YYYYMMDD]_[HHMMSS].zip”.

*The [YYYYMMDD] part is the date when the log collection was performed, and the [HHMMSS] part is the time when the log collection was performed.

Software Information Related to This Software

1. This product includes software developed by the OpenSSL Project for use in the OpenSSL Toolkit (<http://www.openssl.org/>).
2. Software licensed in accordance with the Apache License 2.0 is included in this software.
3. Software licensed in accordance with the MIT License is included in this software.
4. Software licensed in accordance with the GNU Library General Public License version 2 is included in this software.
5. Software licensed in accordance with the GNU Library General Public License version 3 is included in this software.
6. Software licensed in accordance with the Boost Software License 1.0 is included in this software.
7. Software licensed in accordance with the GNU Lesser General Public License v2.1 is included in this software.
8. Software licensed in accordance with the Mozilla Public License 2.0 is included in this software.
9. Software licensed in accordance with the zlib/Libpng License is included in this software.
10. Software licensed in accordance with the PostgreSQL License is included in this software.
11. Software licensed in accordance with the NVIDIA Software License is included in this software.
12. Software licensed in accordance with the BSD License is included in this software.
13. Software licensed in accordance with the PyTorch License is included in this software.

LICENSE ISSUES

The OpenSSL toolkit stays under a double license, i.e. both the conditions of the OpenSSL License and the original SSLeay license apply to the toolkit.

See below for the actual license texts.

OpenSSL License

/* =====

* Copyright (c) 1998-2019 The OpenSSL Project. All rights reserved.

* Redistribution and use in source and binary forms, with or without modification, are permitted provided that the following conditions are met:

* 1. Redistributions of source code must retain the above copyright notice, this list of conditions and the following disclaimer.

* 2. Redistributions in binary form must reproduce the above copyright notice, this list of conditions and the following disclaimer in the documentation and/or other materials provided with the distribution.

* 3. All advertising materials mentioning features or use of this software must display the following acknowledgment:

"This product includes software developed by the OpenSSL Project for use in the OpenSSL Toolkit.

(<http://www.openssl.org/>)"

* 4. The names "OpenSSL Toolkit" and "OpenSSL Project" must not be used to endorse or promote products derived from this software without prior written permission. For written permission, please contact openssl-core@openssl.org.

* 5. Products derived from this software may not be called "OpenSSL" nor may "OpenSSL" appear in their names without prior written permission of the OpenSSL Project.

* 6. Redistributions of any form whatsoever must retain the following acknowledgment: "This product includes software developed by the OpenSSL Project for use in the OpenSSL Toolkit (<http://www.openssl.org/>)"

* THIS SOFTWARE IS PROVIDED BY THE OpenSSL PROJECT ``AS IS" AND ANY EXPRESSED OR IMPLIED WARRANTIES, INCLUDING, BUT NOT LIMITED TO, THE IMPLIED WARRANTIES OF MERCHANTABILITY AND FITNESS FOR A PARTICULAR PURPOSE ARE DISCLAIMED. IN NO EVENT SHALL THE OpenSSL PROJECT OR ITS CONTRIBUTORS BE LIABLE FOR ANY DIRECT, INDIRECT, INCIDENTAL, SPECIAL, EXEMPLARY, OR CONSEQUENTIAL DAMAGES (INCLUDING, BUT NOT LIMITED TO, PROCUREMENT OF SUBSTITUTE GOODS OR SERVICES; LOSS OF USE, DATA, OR PROFITS; OR BUSINESS INTERRUPTION) HOWEVER CAUSED AND ON ANY THEORY OF LIABILITY, WHETHER IN CONTRACT, STRICT LIABILITY, OR TORT (INCLUDING NEGLIGENCE OR OTHERWISE) ARISING IN ANY WAY OUT OF THE USE OF THIS SOFTWARE, EVEN IF ADVISED OF THE POSSIBILITY OF SUCH DAMAGE.

* This product includes cryptographic software written by Eric Young (ey@cryptsoft.com). This product includes software written by Tim Hudson (tjh@cryptsoft.com).

Original SSLeay License

/* Copyright (C) 1995-1998 Eric Young (ey@cryptsoft.com)

* All rights reserved.

*

* This package is an SSL implementation written by Eric Young (ey@cryptsoft.com).

* The implementation was written so as to conform with Netscapes SSL.

* This library is free for commercial and non-commercial use as long as the following conditions are aheared to. The following conditions apply to all code found in this distribution, be it the RC4, RSA, lhash, DES, etc., code; not just the SSL code. The SSL documentation included with this distribution is covered by the same copyright terms except that the holder is Tim Hudson (tjh@cryptsoft.com).

* Copyright remains Eric Young's, and as such any Copyright notices in the code are not to be removed.

* If this package is used in a product, Eric Young should be given attribution as the author of the parts of the library used.

* This can be in the form of a textual message at program startup or in documentation (online or textual) provided with the package.

* Redistribution and use in source and binary forms, with or without modification, are permitted provided that the following conditions are met:

* 1. Redistributions of source code must retain the copyright notice, this list of conditions and the following disclaimer.

* 2. Redistributions in binary form must reproduce the above copyright notice, this list of conditions and the following disclaimer in the documentation and/or other materials provided with the distribution.

* 3. All advertising materials mentioning features or use of this software must display the following acknowledgement:

"This product includes cryptographic software written by Eric Young (eay@cryptsoft.com)"

The word 'cryptographic' can be left out if the routines from the library being used are not cryptographic related : -).

* 4. If you include any Windows specific code (or a derivative thereof) from the apps directory (application code) you must include an acknowledgement:

"This product includes software written by Tim Hudson (tjh@cryptsoft.com)"

* THIS SOFTWARE IS PROVIDED BY ERIC YOUNG ``AS IS" AND ANY EXPRESS OR IMPLIED WARRANTIES, INCLUDING, BUT NOT LIMITED TO, THE * IMPLIED WARRANTIES OF MERCHANTABILITY AND FITNESS FOR A PARTICULAR PURPOSE ARE DISCLAIMED. IN NO EVENT SHALL THE AUTHOR OR CONTRIBUTORS BE LIABLE FOR ANY DIRECT, INDIRECT, INCIDENTAL, SPECIAL, EXEMPLARY, OR CONSEQUENTIAL DAMAGES (INCLUDING, BUT NOT LIMITED TO, PROCUREMENT OF SUBSTITUTE GOODS OR SERVICES; LOSS OF USE, DATA, OR PROFITS; OR BUSINESS INTERRUPTION)

* HOWEVER CAUSED AND ON ANY THEORY OF LIABILITY, WHETHER IN CONTRACT, STRICT LIABILITY, OR TORT (INCLUDING NEGLIGENCE OR OTHERWISE) ARISING IN ANY WAY OUT OF THE USE OF THIS SOFTWARE, EVEN IF ADVISED OF THE POSSIBILITY OF SUCH DAMAGE.

* The license and distribution terms for any publically available version or derivative of this code cannot be changed. i.e. this code cannot simply be copied and put under another distribution license [including the GNU Public License.]

Apache License 2.0

SPDX identifier

Apache-2.0

License text

Apache License

Version 2.0, January 2004

<http://www.apache.org/licenses/>

TERMS AND CONDITIONS FOR USE, REPRODUCTION, AND DISTRIBUTION

1. Definitions.

"License" shall mean the terms and conditions for use, reproduction, and distribution as defined by Sections 1 through 9 of this document.

"Licensor" shall mean the copyright owner or entity authorized by the copyright owner that is granting the License.

"Legal Entity" shall mean the union of the acting entity and all other entities that control, are controlled by, or are under common control with that entity. For the purposes of this definition, "control" means (i) the power, direct or indirect, to cause the direction or management of such entity, whether by contract or otherwise, or (ii) ownership of fifty percent (50%)

or more of the outstanding shares, or (iii) beneficial ownership of such entity.

"You" (or "Your") shall mean an individual or Legal Entity exercising permissions granted by this License.

"Source" form shall mean the preferred form for making modifications, including but not limited to software source code, documentation source, and configuration files.

"Object" form shall mean any form resulting from mechanical transformation or translation of a Source form, including but not limited to compiled object code, generated documentation, and conversions to other media types.

"Work" shall mean the work of authorship, whether in Source or Object form, made available under the License, as indicated by a copyright notice that is included in or attached to the work (an example is provided in the Appendix below).

"Derivative Works" shall mean any work, whether in Source or Object form, that is based on (or derived from) the Work and for which the editorial revisions, annotations, elaborations, or other modifications represent, as a whole, an original work of authorship. For the purposes of this License, Derivative Works shall not include works that remain separable from, or merely link (or bind by name) to the interfaces of, the Work and Derivative Works thereof.

"Contribution" shall mean any work of authorship, including the original version of the Work and any modifications or additions to that Work or Derivative Works thereof, that is intentionally submitted to Licensor for inclusion in the Work by the copyright owner or by an individual or Legal Entity authorized to submit on behalf of the copyright owner. For the purposes of this definition, "submitted" means any form of electronic, verbal, or written communication sent to the Licensor or its representatives, including but not limited to communication on electronic mailing lists, source code control systems, and issue tracking systems that are managed by, or on behalf of, the Licensor for the purpose of discussing and improving the Work, but excluding communication that is conspicuously marked or otherwise designated in writing by the copyright owner as "Not a Contribution."

"Contributor" shall mean Licensor and any individual or Legal Entity on behalf of whom a Contribution has been received by Licensor and subsequently incorporated within the Work.

2. Grant of Copyright License. Subject to the terms and conditions of this License, each Contributor hereby grants to You a perpetual, worldwide, non-exclusive, no-charge, royalty-free, irrevocable copyright license to reproduce, prepare Derivative Works of, publicly display, publicly perform, sublicense, and distribute the Work and such Derivative Works in Source or Object form.

3. Grant of Patent License. Subject to the terms and conditions of this License, each Contributor hereby grants to You a perpetual, worldwide, non-exclusive, no-charge, royalty-free, irrevocable (except as stated in this section) patent license to make, have made, use, offer to sell, sell, import, and otherwise transfer the Work, where such license applies only to those patent claims licensable by such Contributor that are necessarily infringed by their Contribution(s) alone or by combination of their Contribution(s) with the Work to which such Contribution(s) was submitted. If You institute patent litigation against

any entity (including a cross-claim or counterclaim in a lawsuit) alleging that the Work or a Contribution incorporated within the Work constitutes direct or contributory patent infringement, then any patent licenses granted to You under this License for that Work shall terminate as of the date such litigation is filed.

4. Redistribution. You may reproduce and distribute copies of the Work or Derivative Works thereof in any medium, with or without modifications, and in Source or Object form, provided that You meet the following conditions:

- (a) You must give any other recipients of the Work or Derivative Works a copy of this License; and
- (b) You must cause any modified files to carry prominent notices stating that You changed the files; and
- (c) You must retain, in the Source form of any Derivative Works that You distribute, all copyright, patent, trademark, and attribution notices from the Source form of the Work, excluding those notices that do not pertain to any part of the Derivative Works; and
- (d) If the Work includes a "NOTICE" text file as part of its distribution, then any Derivative Works that You distribute must include a readable copy of the attribution notices contained within such NOTICE file, excluding those notices that do not pertain to any part of the Derivative Works, in at least one of the following places: within a NOTICE text file distributed as part of the Derivative Works; within the Source form or documentation, if provided along with the Derivative Works; or, within a display generated by the Derivative Works, if and wherever such third-party notices normally appear. The contents of the NOTICE file are for informational purposes only and do not modify the License. You may add Your own attribution notices within Derivative Works that You distribute, alongside or as an addendum to the NOTICE text from the Work, provided that such additional attribution notices cannot be construed as modifying the License.

You may add Your own copyright statement to Your modifications and may provide additional or different license terms and conditions for use, reproduction, or distribution of Your modifications, or for any such Derivative Works as a whole, provided Your use, reproduction, and distribution of the Work otherwise complies with the conditions stated in this License.

5. Submission of Contributions. Unless You explicitly state otherwise, any Contribution intentionally submitted for inclusion in the Work by You to the Licensor shall be under the terms and conditions of this License, without any additional terms or conditions. Notwithstanding the above, nothing herein shall supersede or modify the terms of any separate license agreement you may have executed with Licensor regarding such Contributions.

6. Trademarks. This License does not grant permission to use the trade names, trademarks, service marks, or product names of the Licensor, except as required for reasonable and customary use in describing the origin of the Work and reproducing the content of the NOTICE file.

7. Disclaimer of Warranty. Unless required by applicable law or agreed to in writing, Licensor provides the Work (and each Contributor provides its Contributions) on an "AS IS" BASIS, WITHOUT WARRANTIES OR CONDITIONS OF ANY KIND, either express or implied, including, without limitation, any warranties or conditions of TITLE, NON-INFRINGEMENT, MERCHANTABILITY, or FITNESS FOR A PARTICULAR PURPOSE. You are solely responsible for determining the appropriateness of using or redistributing the Work and assume any risks associated with Your exercise of permissions under this License.

8. Limitation of Liability. In no event and under no legal theory, whether in tort (including negligence), contract, or otherwise, unless required by applicable law (such as deliberate and grossly negligent acts) or agreed to in writing, shall any

Contributor be liable to You for damages, including any direct, indirect, special, incidental, or consequential damages of any character arising as a result of this License or out of the use or inability to use the Work (including but not limited to damages for loss of goodwill, work stoppage, computer failure or malfunction, or any and all other commercial damages or losses), even if such Contributor has been advised of the possibility of such damages.

9. Accepting Warranty or Additional Liability. While redistributing the Work or Derivative Works thereof, You may choose to offer, and charge a fee for, acceptance of support, warranty, indemnity, or other liability obligations and/or rights consistent with this License. However, in accepting such obligations, You may act only on Your own behalf and on Your sole responsibility, not on behalf of any other Contributor, and only if You agree to indemnify, defend, and hold each Contributor harmless for any liability incurred by, or claims asserted against, such Contributor by reason of your accepting any such warranty or additional liability.

END OF TERMS AND CONDITIONS

APPENDIX: How to apply the Apache License to your work.

To apply the Apache License to your work, attach the following boilerplate notice, with the fields enclosed by brackets "[]" replaced with your own identifying information. (Don't include the brackets!) The text should be enclosed in the appropriate comment syntax for the file format. We also recommend that a file or class name and description of purpose be included on the same "printed page" as the copyright notice for easier identification within third-party archives.

Copyright [yyyy] [name of copyright owner]

Licensed under the Apache License, Version 2.0 (the "License"); you may not use this file except in compliance with the License.

You may obtain a copy of the License at

<http://www.apache.org/licenses/LICENSE-2.0>

Unless required by applicable law or agreed to in writing, software distributed under the License is distributed on an "AS IS" BASIS, WITHOUT WARRANTIES OR CONDITIONS OF ANY KIND, either express or implied.

See the License for the specific language governing permissions and limitations under the License.

Standard License Header

Copyright [yyyy] [name of copyright owner]

Licensed under the Apache License, Version 2.0 (the "License");

you may not use this file except in compliance with the License.

You may obtain a copy of the License at

<http://www.apache.org/licenses/LICENSE-2.0>

Unless required by applicable law or agreed to in writing, software distributed under the License is distributed on an "AS

IS" BASIS, WITHOUT WARRANTIES OR CONDITIONS OF ANY KIND, either express or implied.

See the License for the specific language governing permissions and limitations under the License.

Notes

This license was released January 2004

SPDX web page

<https://spdx.org/licenses/Apache-2.0.html>

Notice

This license content is provided by the SPDX project. For more information about licenses.nuget.org, see our documentation.

Data pulled from [spdx/license-list-data](#) on February 9, 2023.

The MIT License (MIT)

Copyright © 2023 <copyright holders>

Permission is hereby granted, free of charge, to any person obtaining a copy of this software and associated documentation files (the "Software"), to deal in the Software without restriction, including without limitation the rights to use, copy, modify, merge, publish, distribute, sublicense, and/or sell copies of the Software, and to permit persons to whom the Software is furnished to do so, subject to the following conditions:

The above copyright notice and this permission notice shall be included in all copies or substantial portions of the Software.

THE SOFTWARE IS PROVIDED "AS IS", WITHOUT WARRANTY OF ANY KIND, EXPRESS OR IMPLIED, INCLUDING BUT NOT LIMITED TO THE WARRANTIES OF MERCHANTABILITY, FITNESS FOR A PARTICULAR PURPOSE AND NONINFRINGEMENT. IN NO EVENT SHALL THE AUTHORS OR COPYRIGHT HOLDERS BE LIABLE FOR ANY CLAIM, DAMAGES OR OTHER LIABILITY, WHETHER IN AN ACTION OF CONTRACT, TORT OR OTHERWISE, ARISING FROM, OUT OF OR IN CONNECTION WITH THE SOFTWARE OR THE USE OR OTHER DEALINGS IN THE SOFTWARE.

The 2-Clause BSD License

Copyright <YEAR> <COPYRIGHT HOLDER>

Redistribution and use in source and binary forms, with or without modification, are permitted provided that the following conditions are met:

1. Redistributions of source code must retain the above copyright notice, this list of conditions and the following disclaimer.
2. Redistributions in binary form must reproduce the above copyright notice, this list of conditions and the following disclaimer in the documentation and/or other materials provided with the distribution.

THIS SOFTWARE IS PROVIDED BY THE COPYRIGHT HOLDERS AND CONTRIBUTORS "AS IS" AND ANY EXPRESS OR IMPLIED WARRANTIES, INCLUDING, BUT NOT LIMITED TO, THE IMPLIED WARRANTIES OF MERCHANTABILITY AND FITNESS FOR A PARTICULAR PURPOSE ARE DISCLAIMED. IN NO EVENT SHALL THE COPYRIGHT HOLDER OR CONTRIBUTORS BE LIABLE FOR ANY DIRECT, INDIRECT, INCIDENTAL, SPECIAL, EXEMPLARY, OR CONSEQUENTIAL DAMAGES (INCLUDING, BUT NOT LIMITED TO, PROCUREMENT OF SUBSTITUTE GOODS OR SERVICES; LOSS OF USE, DATA, OR PROFITS; OR BUSINESS INTERRUPTION) HOWEVER CAUSED AND ON ANY THEORY OF LIABILITY, WHETHER IN CONTRACT, STRICT LIABILITY, OR TORT (INCLUDING NEGLIGENCE OR OTHERWISE) ARISING IN ANY WAY OUT OF THE USE OF THIS SOFTWARE, EVEN IF ADVISED OF THE POSSIBILITY OF SUCH DAMAGE.

The 3-Clause BSD License

Copyright <YEAR> <COPYRIGHT HOLDER>

Redistribution and use in source and binary forms, with or without modification, are permitted provided that the following conditions are met:

1. Redistributions of source code must retain the above copyright notice, this list of conditions and the following disclaimer.
2. Redistributions in binary form must reproduce the above copyright notice, this list of conditions and the following disclaimer in the documentation and/or other materials provided with the distribution.
3. Neither the name of the copyright holder nor the names of its contributors may be used to endorse or promote products derived from this software without specific prior written permission.

THIS SOFTWARE IS PROVIDED BY THE COPYRIGHT HOLDERS AND CONTRIBUTORS "AS IS" AND ANY EXPRESS OR IMPLIED WARRANTIES, INCLUDING, BUT NOT LIMITED TO, THE IMPLIED WARRANTIES OF MERCHANTABILITY AND FITNESS FOR A PARTICULAR PURPOSE ARE DISCLAIMED. IN NO EVENT SHALL THE COPYRIGHT HOLDER OR CONTRIBUTORS BE LIABLE FOR ANY DIRECT, INDIRECT, INCIDENTAL, SPECIAL, EXEMPLARY, OR CONSEQUENTIAL DAMAGES (INCLUDING, BUT NOT LIMITED TO, PROCUREMENT OF SUBSTITUTE GOODS OR SERVICES; LOSS OF USE, DATA, OR PROFITS; OR BUSINESS INTERRUPTION) HOWEVER CAUSED AND ON ANY THEORY OF LIABILITY, WHETHER IN CONTRACT,

STRICT LIABILITY, OR TORT (INCLUDING NEGLIGENCE OR OTHERWISE) ARISING IN ANY WAY OUT OF THE USE OF THIS SOFTWARE, EVEN IF ADVISED OF THE POSSIBILITY OF SUCH DAMAGE.

Boost Software License 1.0

Permission is hereby granted, free of charge, to any person or organization obtaining a copy of the software and accompanying documentation covered by this license (the “Software”) to use, reproduce, display, distribute, execute, and transmit the Software, and to prepare derivative works of the Software, and to permit third-parties to whom the Software is furnished to do so, all subject to the following:

The copyright notices in the Software and this entire statement, including the above license grant, this restriction and the following disclaimer, must be included in all copies of the Software, in whole or in part, and all derivative works of the Software, unless such copies or derivative works are solely in the form of machine-executable object code generated by a source language processor.

THE SOFTWARE IS PROVIDED “AS IS”, WITHOUT WARRANTY OF ANY KIND, EXPRESS OR IMPLIED, INCLUDING BUT NOT LIMITED TO THE WARRANTIES OF MERCHANTABILITY, FITNESS FOR A PARTICULAR PURPOSE, TITLE AND NON-INFRINGEMENT. IN NO EVENT SHALL THE COPYRIGHT HOLDERS OR ANYONE DISTRIBUTING THE SOFTWARE BE LIABLE FOR ANY DAMAGES OR OTHER LIABILITY, WHETHER IN CONTRACT, TORT OR OTHERWISE, ARISING FROM, OUT OF OR IN CONNECTION WITH THE SOFTWARE OR THE USE OR OTHER DEALINGS IN THE SOFTWARE.

GNU LESSER GENERAL PUBLIC LICENSE

Version 2.1, February 1999

Copyright (C) 1991, 1999 Free Software Foundation, Inc.

51 Franklin Street, Fifth Floor, Boston, MA 02110-1301 USA

Everyone is permitted to copy and distribute verbatim copies of this license document, but changing it is not allowed.

[This is the first released version of the Lesser GPL. It also counts as the successor of the GNU Library Public License, version 2, hence the version number 2.1.]

Preamble

The licenses for most software are designed to take away your freedom to share and change it. By contrast, the GNU General Public Licenses are intended to guarantee your freedom to share and change free software--to make sure the software is free for all its users.

This license, the Lesser General Public License, applies to some specially designated software packages--typically libraries--of the Free Software Foundation and other authors who decide to use it. You can use it too, but we suggest you first think carefully about whether this license or the ordinary General Public License is the better strategy to use in any particular case, based on the explanations below.

When we speak of free software, we are referring to freedom of use, not price. Our General Public Licenses are designed to

make sure that you have the freedom to distribute copies of free software (and charge for this service if you wish); that you receive source code or can get it if you want it; that you can change the software and use pieces of it in new free programs; and that you are informed that you can do these things.

To protect your rights, we need to make restrictions that forbid distributors to deny you these rights or to ask you to surrender these rights. These restrictions translate to certain responsibilities for you if you distribute copies of the library or if you modify it.

For example, if you distribute copies of the library, whether gratis or for a fee, you must give the recipients all the rights that we gave you. You must make sure that they, too, receive or can get the source code. If you link other code with the library, you must provide complete object files to the recipients, so that they can relink them with the library after making changes to the library and recompiling it. And you must show them these terms so they know their rights.

We protect your rights with a two-step method: (1) we copyright the library, and (2) we offer you this license, which gives you legal permission to copy, distribute and/or modify the library.

To protect each distributor, we want to make it very clear that there is no warranty for the free library. Also, if the library is modified by someone else and passed on, the recipients should know that what they have is not the original version, so that the original author's reputation will not be affected by problems that might be introduced by others.

Finally, software patents pose a constant threat to the existence of any free program. We wish to make sure that a company cannot effectively restrict the users of a free program by obtaining a restrictive license from a patent holder. Therefore, we insist that any patent license obtained for a version of the library must be consistent with the full freedom of use specified in this license.

Most GNU software, including some libraries, is covered by the ordinary GNU General Public License. This license, the GNU Lesser General Public License, applies to certain designated libraries, and is quite different from the ordinary General Public License. We use this license for certain libraries in order to permit linking those libraries into non-free programs.

When a program is linked with a library, whether statically or using a shared library, the combination of the two is legally speaking a combined work, a derivative of the original library. The ordinary General Public License therefore permits such linking only if the entire combination fits its criteria of freedom. The Lesser General Public License permits more lax criteria for linking other code with the library.

We call this license the "Lesser" General Public License because it does Less to protect the user's freedom than the ordinary General Public License. It also provides other free software developers Less of an advantage over competing non-free programs. These disadvantages are the reason we use the ordinary General Public License for many libraries. However, the Lesser license provides advantages in certain special circumstances.

For example, on rare occasions, there may be a special need to encourage the widest possible use of a certain library, so that

it becomes a de-facto standard. To achieve this, non-free programs must be allowed to use the library. A more frequent case is that a free library does the same job as widely used non-free libraries. In this case, there is little to gain by limiting the free library to free software only, so we use the Lesser General Public License.

In other cases, permission to use a particular library in non-free programs enables a greater number of people to use a large body of free software. For example, permission to use the GNU C Library in non-free programs enables many more people to use the whole GNU operating system, as well as its variant, the GNU/Linux operating system.

Although the Lesser General Public License is Less protective of the users' freedom, it does ensure that the user of a program that is linked with the Library has the freedom and the wherewithal to run that program using a modified version of the Library.

The precise terms and conditions for copying, distribution and modification follow. Pay close attention to the difference between a "work based on the library" and a "work that uses the library". The former contains code derived from the library, whereas the latter must be combined with the library in order to run.

TERMS AND CONDITIONS FOR COPYING, DISTRIBUTION AND MODIFICATION

0. This License Agreement applies to any software library or other program which contains a notice placed by the copyright holder or other authorized party saying it may be distributed under the terms of this Lesser General Public License (also called "this License"). Each licensee is addressed as "you".

A "library" means a collection of software functions and/or data prepared so as to be conveniently linked with application programs (which use some of those functions and data) to form executables.

The "Library", below, refers to any such software library or work which has been distributed under these terms. A "work based on the Library" means either the Library or any derivative work under copyright law: that is to say, a work containing the Library or a portion of it, either verbatim or with modifications and/or translated straightforwardly into another language. (Hereinafter, translation is included without limitation in the term "modification".)

"Source code" for a work means the preferred form of the work for making modifications to it. For a library, complete source code means all the source code for all modules it contains, plus any associated interface definition files, plus the scripts used to control compilation and installation of the library.

Activities other than copying, distribution and modification are not covered by this License; they are outside its scope. The act of running a program using the Library is not restricted, and output from such a program is covered only if its contents constitute a work based on the Library (independent of the use of the Library in a tool for writing it). Whether that is true depends on what the Library does and what the program that uses the Library does.

1. You may copy and distribute verbatim copies of the Library's complete source code as you receive it, in any medium, provided that you conspicuously and appropriately publish on each copy an appropriate copyright notice and disclaimer of warranty; keep intact all the notices that refer to this License and to the absence of any warranty; and distribute a copy of this License along with the Library.

You may charge a fee for the physical act of transferring a copy, and you may at your option offer warranty protection in exchange for a fee.

2. You may modify your copy or copies of the Library or any portion of it, thus forming a work based on the Library, and copy and distribute such modifications or work under the terms of Section 1 above, provided that you also meet all of these conditions:

a) The modified work must itself be a software library.

b) You must cause the files modified to carry prominent notices stating that you changed the files and the date of any change.

c) You must cause the whole of the work to be licensed at no charge to all third parties under the terms of this License.

d) If a facility in the modified Library refers to a function or a table of data to be supplied by an application program that uses the facility, other than as an argument passed when the facility is invoked, then you must make a good faith effort to ensure that, in the event an application does not supply such function or table, the facility still operates, and performs whatever part of its purpose remains meaningful.

(For example, a function in a library to compute square roots has a purpose that is entirely well-defined independent of the application. Therefore, Subsection 2d requires that any application-supplied function or table used by this function must be optional: if the application does not supply it, the square root function must still compute square roots.)

These requirements apply to the modified work as a whole. If identifiable sections of that work are not derived from the Library, and can be reasonably considered independent and separate works in themselves, then this License, and its terms, do not apply to those sections when you distribute them as separate works. But when you distribute the same sections as part of a whole which is a work based on the Library, the distribution of the whole must be on the terms of this License, whose permissions for other licensees extend to the entire whole, and thus to each and every part regardless of who wrote it.

Thus, it is not the intent of this section to claim rights or contest your rights to work written entirely by you; rather, the intent is to exercise the right to control the distribution of derivative or collective works based on the Library.

In addition, mere aggregation of another work not based on the Library with the Library (or with a work based on the Library) on a volume of a storage or distribution medium does not bring the other work under the scope of this License.

3. You may opt to apply the terms of the ordinary GNU General Public License instead of this License to a given copy of the Library. To do this, you must alter all the notices that refer to this License, so that they refer to the ordinary GNU General Public License, version 2, instead of to this License. (If a newer version than version 2 of the ordinary GNU General Public License has appeared, then you can specify that version instead if you wish.) Do not make any other change in these notices.

Once this change is made in a given copy, it is irreversible for that copy, so the ordinary GNU General Public License applies to all subsequent copies and derivative works made from that copy.

This option is useful when you wish to copy part of the code of the Library into a program that is not a library.

4. You may copy and distribute the Library (or a portion or derivative of it, under Section 2) in object code or executable form under the terms of Sections 1 and 2 above provided that you accompany it with the complete corresponding machine-readable source code, which must be distributed under the terms of Sections 1 and 2 above on a medium customarily used for software interchange.

If distribution of object code is made by offering access to copy from a designated place, then offering equivalent access to copy the source code from the same place satisfies the requirement to distribute the source code, even though third parties are not compelled to copy the source along with the object code.

5. A program that contains no derivative of any portion of the Library, but is designed to work with the Library by being compiled or linked with it, is called a "work that uses the Library". Such a work, in isolation, is not a derivative work of the Library, and therefore falls outside the scope of this License.

However, linking a "work that uses the Library" with the Library creates an executable that is a derivative of the Library (because it contains portions of the Library), rather than a "work that uses the library". The executable is therefore covered by this License. Section 6 states terms for distribution of such executables.

When a "work that uses the Library" uses material from a header file that is part of the Library, the object code for the work may be a derivative work of the Library even though the source code is not. Whether this is true is especially significant if the work can be linked without the Library, or if the work is itself a library. The threshold for this to be true is not precisely defined by law.

If such an object file uses only numerical parameters, data structure layouts and accessors, and small macros and small inline functions (ten lines or less in length), then the use of the object file is unrestricted, regardless of whether it is legally a derivative work. (Executables containing this object code plus portions of the Library will still fall under Section 6.)

Otherwise, if the work is a derivative of the Library, you may distribute the object code for the work under the terms of Section 6. Any executables containing that work also fall under Section 6, whether or not they are linked directly with the Library itself.

6. As an exception to the Sections above, you may also combine or link a "work that uses the Library" with the Library to produce a work containing portions of the Library, and distribute that work under terms of your choice, provided that the terms permit modification of the work for the customer's own use and reverse engineering for debugging such modifications.

You must give prominent notice with each copy of the work that the Library is used in it and that the Library and its use are covered by this License. You must supply a copy of this License. If the work during execution displays copyright notices, you must include the copyright notice for the Library among them, as well as a reference directing the user to the copy of this License. Also, you must do one of these things:

- a) Accompany the work with the complete corresponding machine-readable source code for the Library including whatever changes were used in the work (which must be distributed under Sections 1 and 2 above); and, if the work is an executable linked with the Library, with the complete machine-readable "work that uses the Library", as object code and/or source code, so that the user can modify the Library and then relink to produce a modified executable containing the modified Library. (It is understood that the user who changes the contents of definitions files in the Library will not necessarily be able to recompile the application to use the modified definitions.)
 - b) Use a suitable shared library mechanism for linking with the Library. A suitable mechanism is one that (1) uses at run time a copy of the library already present on the user's computer system, rather than copying library functions into the executable, and (2) will operate properly with a modified version of the library, if the user installs one, as long as the modified version is interface-compatible with the version that the work was made with.
 - c) Accompany the work with a written offer, valid for at least three years, to give the same user the materials specified in Subsection 6a, above, for a charge no more than the cost of performing this distribution.
 - d) If distribution of the work is made by offering access to copy from a designated place, offer equivalent access to copy the above specified materials from the same place.
 - e) Verify that the user has already received a copy of these materials or that you have already sent this user a copy.
- For an executable, the required form of the "work that uses the Library" must include any data and utility programs needed for reproducing the executable from it. However, as a special exception, the materials to be distributed need not include anything that is normally distributed (in either source or binary form) with the major components (compiler, kernel, and so on) of the operating system on which the executable runs, unless that component itself accompanies the executable.

It may happen that this requirement contradicts the license restrictions of other proprietary libraries that do not normally accompany the operating system. Such a contradiction means you cannot use both them and the Library together in an executable that you distribute.

7. You may place library facilities that are a work based on the Library side-by-side in a single library together with other library facilities not covered by this License, and distribute such a combined library, provided that the separate distribution of the work based on the Library and of the other library facilities is otherwise permitted, and provided that you do these two things:

- a) Accompany the combined library with a copy of the same work based on the Library, uncombined with any other library

facilities. This must be distributed under the terms of the Sections above.

b) Give prominent notice with the combined library of the fact that part of it is a work based on the Library, and explaining where to find the accompanying uncombined form of the same work.

8. You may not copy, modify, sublicense, link with, or distribute the Library except as expressly provided under this License. Any attempt otherwise to copy, modify, sublicense, link with, or distribute the Library is void, and will automatically terminate your rights under this License. However, parties who have received copies, or rights, from you under this License will not have their licenses terminated so long as such parties remain in full compliance.

9. You are not required to accept this License, since you have not signed it. However, nothing else grants you permission to modify or distribute the Library or its derivative works. These actions are prohibited by law if you do not accept this License. Therefore, by modifying or distributing the Library (or any work based on the Library), you indicate your acceptance of this License to do so, and all its terms and conditions for copying, distributing or modifying the Library or works based on it.

10. Each time you redistribute the Library (or any work based on the Library), the recipient automatically receives a license from the original licensor to copy, distribute, link with or modify the Library subject to these terms and conditions. You may not impose any further restrictions on the recipients' exercise of the rights granted herein. You are not responsible for enforcing compliance by third parties with this License.

11. If, as a consequence of a court judgment or allegation of patent infringement or for any other reason (not limited to patent issues), conditions are imposed on you (whether by court order, agreement or otherwise) that contradict the conditions of this License, they do not excuse you from the conditions of this License. If you cannot distribute so as to satisfy simultaneously your obligations under this License and any other pertinent obligations, then as a consequence you may not distribute the Library at all. For example, if a patent license would not permit royalty-free redistribution of the Library by all those who receive copies directly or indirectly through you, then the only way you could satisfy both it and this License would be to refrain entirely from distribution of the Library.

If any portion of this section is held invalid or unenforceable under any particular circumstance, the balance of the section is intended to apply, and the section as a whole is intended to apply in other circumstances.

It is not the purpose of this section to induce you to infringe any patents or other property right claims or to contest validity of any such claims; this section has the sole purpose of protecting the integrity of the free software distribution system which is implemented by public license practices. Many people have made generous contributions to the wide range of software distributed through that system in reliance on consistent application of that system; it is up to the author/donor to decide if he or she is willing to distribute software through any other system and a licensee cannot impose that choice.

This section is intended to make thoroughly clear what is believed to be a consequence of the rest of this License.

12. If the distribution and/or use of the Library is restricted in certain countries either by patents or by copyrighted

interfaces, the original copyright holder who places the Library under this License may add an explicit geographical distribution limitation excluding those countries, so that distribution is permitted only in or among countries not thus excluded. In such case, this License incorporates the limitation as if written in the body of this License.

13. The Free Software Foundation may publish revised and/or new versions of the Lesser General Public License from time to time. Such new versions will be similar in spirit to the present version, but may differ in detail to address new problems or concerns.

Each version is given a distinguishing version number. If the Library specifies a version number of this License which applies to it and "any later version", you have the option of following the terms and conditions either of that version or of any later version published by the Free Software Foundation. If the Library does not specify a license version number, you may choose any version ever published by the Free Software Foundation.

14. If you wish to incorporate parts of the Library into other free programs whose distribution conditions are incompatible with these, write to the author to ask for permission. For software which is copyrighted by the Free Software Foundation, write to the Free Software Foundation; we sometimes make exceptions for this. Our decision will be guided by the two goals of preserving the free status of all derivatives of our free software and of promoting the sharing and reuse of software generally.

NO WARRANTY

15. BECAUSE THE LIBRARY IS LICENSED FREE OF CHARGE, THERE IS NO WARRANTY FOR THE LIBRARY, TO THE EXTENT PERMITTED BY APPLICABLE LAW. EXCEPT WHEN OTHERWISE STATED IN WRITING THE COPYRIGHT HOLDERS AND/OR OTHER PARTIES PROVIDE THE LIBRARY "AS IS" WITHOUT WARRANTY OF ANY KIND, EITHER EXPRESSED OR IMPLIED, INCLUDING, BUT NOT LIMITED TO, THE IMPLIED WARRANTIES OF MERCHANTABILITY AND FITNESS FOR A PARTICULAR PURPOSE. THE ENTIRE RISK AS TO THE QUALITY AND PERFORMANCE OF THE LIBRARY IS WITH YOU. SHOULD THE LIBRARY PROVE DEFECTIVE, YOU ASSUME THE COST OF ALL NECESSARY SERVICING, REPAIR OR CORRECTION.

16. IN NO EVENT UNLESS REQUIRED BY APPLICABLE LAW OR AGREED TO IN WRITING WILL ANY COPYRIGHT HOLDER, OR ANY OTHER PARTY WHO MAY MODIFY AND/OR REDISTRIBUTE THE LIBRARY AS PERMITTED ABOVE, BE LIABLE TO YOU FOR DAMAGES, INCLUDING ANY GENERAL, SPECIAL, INCIDENTAL OR CONSEQUENTIAL DAMAGES ARISING OUT OF THE USE OR INABILITY TO USE THE LIBRARY (INCLUDING BUT NOT LIMITED TO LOSS OF DATA OR DATA BEING RENDERED INACCURATE OR LOSSES SUSTAINED BY YOU OR THIRD PARTIES OR A FAILURE OF THE LIBRARY TO OPERATE WITH ANY OTHER SOFTWARE), EVEN IF SUCH HOLDER OR OTHER PARTY HAS BEEN ADVISED OF THE POSSIBILITY OF SUCH DAMAGES.

END OF TERMS AND CONDITIONS

How to Apply These Terms to Your New Libraries

If you develop a new library, and you want it to be of the greatest possible use to the public, we recommend making it free software that everyone can redistribute and change. You can do so by permitting redistribution under these terms (or, alternatively, under the terms of the ordinary General Public License).

To apply these terms, attach the following notices to the library. It is safest to attach them to the start of each source file to most effectively convey the exclusion of warranty; and each file should have at least the "copyright" line and a pointer to where the full notice is found.

one line to give the library's name and an idea of what it does.

Copyright (C) year name of author

This library is free software; you can redistribute it and/or modify it under the terms of the GNU Lesser General Public License as published by the Free Software Foundation; either version 2.1 of the License, or (at your option) any later version.

This library is distributed in the hope that it will be useful, but WITHOUT ANY WARRANTY; without even the implied warranty of MERCHANTABILITY or FITNESS FOR A PARTICULAR PURPOSE. See the GNU Lesser General Public License for more details.

You should have received a copy of the GNU Lesser General Public License along with this library; if not, write to the Free Software Foundation, Inc., 51 Franklin Street, Fifth Floor, Boston, MA 02110-1301 USA

Also add information on how to contact you by electronic and paper mail.

You should also get your employer (if you work as a programmer) or your school, if any, to sign a "copyright disclaimer" for the library, if necessary. Here is a sample; alter the names:

Yoyodyne, Inc., hereby disclaims all copyright interest in the library 'Frob' (a library for tweaking knobs) written by James Random Hacker.

signature of Ty Coon, 1 April 1990

Ty Coon, President of Vice

Mozilla Public License Version 2.0

=====

1. Definitions

1.1. "Contributor" means each individual or legal entity that creates, contributes to the creation of, or owns Covered Software.

1.2. "Contributor Version" means the combination of the Contributions of others (if any) used by a Contributor and that

particular Contributor's Contribution.

1.3. "Contribution" means Covered Software of a particular Contributor.

1.4. "Covered Software" means Source Code Form to which the initial Contributor has attached the notice in Exhibit A, the Executable Form of such Source Code Form, and Modifications of such Source Code Form, in each case including portions thereof.

1.5. "Incompatible With Secondary Licenses" means

(a) that the initial Contributor has attached the notice described in Exhibit B to the Covered Software; or

(b) that the Covered Software was made available under the terms of version 1.1 or earlier of the License, but not also under the terms of a Secondary License.

1.6. "Executable Form" means any form of the work other than Source Code Form.

1.7. "Larger Work" means a work that combines Covered Software with other material, in a separate file or files, that is not Covered Software.

1.8. "License" means this document.

1.9. "Licensable" means having the right to grant, to the maximum extent possible, whether at the time of the initial grant or subsequently, any and all of the rights conveyed by this License.

1.10. "Modifications" means any of the following:

(a) any file in Source Code Form that results from an addition to, deletion from, or modification of the contents of Covered Software; or

(b) any new file in Source Code Form that contains any Covered Software.

1.11. "Patent Claims" of a Contributor means any patent claim(s), including without limitation, method, process, and apparatus claims, in any patent Licensable by such Contributor that would be infringed, but for the grant of the License, by the making, using, selling, offering for sale, having made, import, or transfer of either its Contributions or its Contributor Version.

1.12. "Secondary License" means either the GNU General Public License, Version 2.0, the GNU Lesser General Public License, Version 2.1, the GNU Affero General Public License, Version 3.0, or any later versions of those licenses.

1.13. "Source Code Form" means the form of the work preferred for making modifications.

1.14. "You" (or "Your") means an individual or a legal entity exercising rights under this License. For legal entities, "You" includes any entity that controls, is controlled by, or is under common control with You. For purposes of this definition, "control" means (a) the power, direct or indirect, to cause the direction or management of such entity, whether by contract or otherwise, or (b) ownership of more than fifty percent (50%) of the outstanding shares or beneficial ownership of such entity.

2. License Grants and Conditions

2.1. Grants

Each Contributor hereby grants You a world-wide, royalty-free, non-exclusive license:

(a) under intellectual property rights (other than patent or trademark)

Licensable by such Contributor to use, reproduce, make available, modify, display, perform, distribute, and otherwise exploit its Contributions, either on an unmodified basis, with Modifications, or as part of a Larger Work; and

(b) under Patent Claims of such Contributor to make, use, sell, offer for sale, have made, import, and otherwise transfer either its Contributions or its Contributor Version.

2.2. Effective Date

The licenses granted in Section 2.1 with respect to any Contribution become effective for each Contribution on the date the Contributor first distributes such Contribution.

2.3. Limitations on Grant Scope

The licenses granted in this Section 2 are the only rights granted under this License. No additional rights or licenses will be implied from the distribution or licensing of Covered Software under this License.

Notwithstanding Section 2.1(b) above, no patent license is granted by a Contributor:

(a) for any code that a Contributor has removed from Covered Software; or

(b) for infringements caused by: (i) Your and any other third party's modifications of Covered Software, or (ii) the combination of its Contributions with other software (except as part of its Contributor Version); or

(c) under Patent Claims infringed by Covered Software in the absence of its Contributions.

This License does not grant any rights in the trademarks, service marks, or logos of any Contributor (except as may be necessary to comply with the notice requirements in Section 3.4).

2.4. Subsequent Licenses

No Contributor makes additional grants as a result of Your choice to distribute the Covered Software under a subsequent version of this License (see Section 10.2) or under the terms of a Secondary License (if permitted under the terms of Section 3.3).

2.5. Representation

Each Contributor represents that the Contributor believes its Contributions are its original creation(s) or it has sufficient rights to grant the rights to its Contributions conveyed by this License.

2.6. Fair Use

This License is not intended to limit any rights You have under applicable copyright doctrines of fair use, fair dealing, or other equivalents.

2.7. Conditions

Sections 3.1, 3.2, 3.3, and 3.4 are conditions of the licenses granted in Section 2.1.

3. Responsibilities

3.1. Distribution of Source Form

All distribution of Covered Software in Source Code Form, including any Modifications that You create or to which You contribute, must be under the terms of this License. You must inform recipients that the Source Code Form of the Covered Software is governed by the terms of this License, and how they can obtain a copy of this License. You may not attempt to alter or restrict the recipients' rights in the Source Code Form.

3.2. Distribution of Executable Form

If You distribute Covered Software in Executable Form then:

(a) such Covered Software must also be made available in Source Code Form, as described in Section 3.1, and You must inform recipients of the Executable Form how they can obtain a copy of such Source Code Form by reasonable means in a timely manner, at a charge no more than the cost of distribution to the recipient; and

(b) You may distribute such Executable Form under the terms of this License, or sublicense it under different terms, provided that the license for the Executable Form does not attempt to limit or alter the recipients' rights in the Source Code Form under this License.

3.3. Distribution of a Larger Work

You may create and distribute a Larger Work under terms of Your choice, provided that You also comply with the requirements of this License for the Covered Software. If the Larger Work is a combination of Covered Software with a work governed by one or more Secondary Licenses, and the Covered Software is not Incompatible With Secondary Licenses, this License permits You to additionally distribute such Covered Software under the terms of such Secondary License(s), so that the recipient of the Larger Work may, at their option, further distribute the Covered Software under the terms of either this License or such Secondary License(s).

3.4. Notices

You may not remove or alter the substance of any license notices (including copyright notices, patent notices, disclaimers of warranty, or limitations of liability) contained within the Source Code Form of the Covered Software, except that You may alter any license notices to the extent required to remedy known factual inaccuracies.

3.5. Application of Additional Terms

You may choose to offer, and to charge a fee for, warranty, support, indemnity or liability obligations to one or more recipients of Covered Software. However, You may do so only on Your own behalf, and not on behalf of any Contributor. You must make it absolutely clear that any such warranty, support, indemnity, or liability obligation is offered by You alone, and You hereby agree to indemnify every Contributor for any liability incurred by such Contributor as a result of warranty, support, indemnity or liability terms You offer. You may include additional disclaimers of warranty and limitations of liability specific to any jurisdiction.

4. Inability to Comply Due to Statute or Regulation

If it is impossible for You to comply with any of the terms of this License with respect to some or all of the Covered Software due to statute, judicial order, or regulation then You must: (a) comply with the terms of this License to the maximum extent possible; and (b) describe the limitations and the code they affect. Such description must be placed in a text file included with all distributions of the Covered Software under this License. Except to the extent prohibited by statute or regulation, such description must be sufficiently detailed for a recipient of ordinary skill to be able to understand it.

5. Termination

5.1. The rights granted under this License will terminate automatically if You fail to comply with any of its terms. However, if You become compliant, then the rights granted under this License from a particular Contributor are reinstated (a) provisionally, unless and until such Contributor explicitly and finally terminates Your grants, and (b) on an ongoing basis, if such Contributor fails to notify You of the non-compliance by some reasonable means prior to 60 days after You have come back into compliance. Moreover, Your grants from a particular Contributor are reinstated on an ongoing basis if such Contributor notifies You of the non-compliance by some reasonable means, this is the first time You have received notice of

non-compliance with this License from such Contributor, and You become compliant prior to 30 days after Your receipt of the notice.

5.2. If You initiate litigation against any entity by asserting a patent infringement claim (excluding declaratory judgment actions, counter-claims, and cross-claims) alleging that a Contributor Version directly or indirectly infringes any patent, then the rights granted to You by any and all Contributors for the Covered Software under Section 2.1 of this License shall terminate.

5.3. In the event of termination under Sections 5.1 or 5.2 above, all end user license agreements (excluding distributors and resellers) which have been validly granted by You or Your distributors under this License prior to termination shall survive termination.

6. Disclaimer of Warranty

Covered Software is provided under this License on an "as is" basis, without warranty of any kind, either expressed, implied, or statutory, including, without limitation, warranties that the Covered Software is free of defects, merchantable, fit for a particular purpose or non-infringing. The entire risk as to the quality and performance of the Covered Software is with You.

Should any Covered Software prove defective in any respect, You (not any Contributor) assume the cost of any necessary servicing, repair, or correction. This disclaimer of warranty constitutes an essential part of this License. No use of any Covered Software is authorized under this License except under this disclaimer.

7. Limitation of Liability

Under no circumstances and under no legal theory, whether tort (including negligence), contract, or otherwise, shall any Contributor, or anyone who distributes Covered Software as permitted above, be liable to You for any direct, indirect, special, incidental, or consequential damages of any character including, without limitation, damages for lost profits, loss of goodwill, work stoppage, computer failure or malfunction, or any and all other commercial damages or losses, even if such party shall have been informed of the possibility of such damages. This limitation of liability shall not apply to liability for death or personal injury resulting from such party's negligence to the extent applicable law prohibits such limitation. Some jurisdictions do not allow the exclusion or limitation of incidental or consequential damages, so this exclusion and limitation may not apply to You.

8. Litigation

Any litigation relating to this License may be brought only in the courts of a jurisdiction where the defendant maintains its principal place of business and such litigation shall be governed by laws of that jurisdiction, without reference to its conflict-of-law provisions.

Nothing in this Section shall prevent a party's ability to bring cross-claims or counter-claims.

9. Miscellaneous

This License represents the complete agreement concerning the subject matter hereof. If any provision of this License is held to be unenforceable, such provision shall be reformed only to the extent necessary to make it enforceable. Any law or regulation which provides that the language of a contract shall be construed against the drafter shall not be used to construe this License against a Contributor.

10. Versions of the License

10.1. New Versions

Mozilla Foundation is the license steward. Except as provided in Section 10.3, no one other than the license steward has the right to modify or publish new versions of this License. Each version will be given a distinguishing version number.

10.2. Effect of New Versions

You may distribute the Covered Software under the terms of the version of the License under which You originally received the Covered Software, or under the terms of any subsequent version published by the license steward.

10.3. Modified Versions

If you create software not governed by this License, and you want to create a new license for such software, you may create and use a modified version of this License if you rename the license and remove any references to the name of the license steward (except to note that such modified license differs from this License).

10.4. Distributing Source Code Form that is Incompatible With Secondary Licenses

If You choose to distribute Source Code Form that is Incompatible With Secondary Licenses under the terms of this version of the License, the notice described in Exhibit B of this License must be attached.

Exhibit A - Source Code Form License Notice

This Source Code Form is subject to the terms of the Mozilla Public License, v. 2.0. If a copy of the MPL was not distributed with this file, You can obtain one at <http://mozilla.org/MPL/2.0/>.

If it is not possible or desirable to put the notice in a particular file, then You may include the notice in a location (such as a LICENSE file in a relevant directory) where a recipient would be likely to look for such a notice.

You may add additional accurate notices of copyright ownership.

Exhibit B - "Incompatible With Secondary Licenses" Notice

This Source Code Form is "Incompatible With Secondary Licenses", as defined by the Mozilla Public License, v. 2.0.

The zlib/libpng License

Copyright (c) <year> <copyright holders>

This software is provided 'as-is', without any express or implied warranty. In no event will the authors be held liable for any damages arising from the use of this software.

Permission is granted to anyone to use this software for any purpose, including commercial applications, and to alter it and redistribute it freely, subject to the following restrictions:

1. The origin of this software must not be misrepresented; you must not claim that you wrote the original software. If you use this software in a product, an acknowledgment in the product documentation would be appreciated but is not required.
 2. Altered source versions must be plainly marked as such, and must not be misrepresented as being the original software.
 3. This notice may not be removed or altered from any source distribution.
-

PostgreSQL License

PostgreSQL is released under the PostgreSQL License, a liberal Open Source license, similar to the BSD or MIT licenses.

PostgreSQL Database Management System
(formerly known as Postgres, then as Postgres95)

Portions Copyright © 1996-2023, The PostgreSQL Global Development Group

Portions Copyright © 1994, The Regents of the University of California

Permission to use, copy, modify, and distribute this software and its documentation for any purpose, without fee, and without a written agreement is hereby granted, provided that the above copyright notice and this paragraph and the following two paragraphs appear in all copies.

IN NO EVENT SHALL THE UNIVERSITY OF CALIFORNIA BE LIABLE TO ANY PARTY FOR DIRECT, INDIRECT, SPECIAL, INCIDENTAL, OR CONSEQUENTIAL DAMAGES, INCLUDING LOST PROFITS, ARISING OUT OF THE USE OF THIS SOFTWARE AND ITS DOCUMENTATION, EVEN IF THE UNIVERSITY OF CALIFORNIA HAS

BEEN ADVISED OF THE POSSIBILITY OF SUCH DAMAGE.

THE UNIVERSITY OF CALIFORNIA SPECIFICALLY DISCLAIMS ANY WARRANTIES, INCLUDING, BUT NOT LIMITED TO, THE IMPLIED WARRANTIES OF MERCHANTABILITY AND FITNESS FOR A PARTICULAR PURPOSE. THE SOFTWARE PROVIDED HEREUNDER IS ON AN "AS IS" BASIS, AND THE UNIVERSITY OF CALIFORNIA HAS NO OBLIGATIONS TO PROVIDE MAINTENANCE, SUPPORT, UPDATES, ENHANCEMENTS, OR MODIFICATIONS.

License For Customer Use of NVIDIA Software

IMPORTANT NOTICE -- READ CAREFULLY: This License For Customer Use of NVIDIA Software ("LICENSE") is the agreement which governs use of the software of NVIDIA Corporation and its subsidiaries ("NVIDIA") downloadable herefrom, including computer software and associated printed materials ("SOFTWARE"). By downloading, installing, copying, or otherwise using the SOFTWARE, you agree to be bound by the terms of this LICENSE. If you do not agree to the terms of this LICENSE, do not download the SOFTWARE.

RECITALS

Use of NVIDIA's products requires three elements: the SOFTWARE, the hardware on a graphics controller board, and a personal computer. The SOFTWARE is protected by copyright laws and international copyright treaties, as well as other intellectual property laws and treaties. The SOFTWARE is not sold, and instead is only licensed for use, strictly in accordance with this document. The hardware is protected by various patents, and is sold, but this LICENSE does not cover that sale, since it may not necessarily be sold as a package with the SOFTWARE. This LICENSE sets forth the terms and conditions of the SOFTWARE LICENSE only.

1. DEFINITIONS

1.1 Customer. Customer means the entity or individual that downloads the SOFTWARE.

2. GRANT OF LICENSE

2.1 Rights and Limitations of Grant. NVIDIA hereby grants Customer the following non-exclusive, non-transferable right to use the SOFTWARE, with the following limitations:

2.1.1 Rights. Customer may install and use multiple copies of the SOFTWARE on a shared computer or concurrently on different computers, and make multiple back-up copies of the SOFTWARE, solely for Customer's use within Customer's Enterprise. "Enterprise" shall mean individual use by Customer or any legal entity (such as a corporation or university) and the subsidiaries it owns by more than fifty percent (50%).

2.1.2 Linux/FreeBSD Exception. Notwithstanding the foregoing terms of Section 2.1.1, SOFTWARE designed exclusively for use on the Linux or FreeBSD operating systems, or other operating systems derived from the source code to these operating systems, may be copied and redistributed, provided that the binary files thereof are not modified in any way

(except for unzipping of compressed files).

2.1.3 Limitations.

No Reverse Engineering. Customer may not reverse engineer, decompile, or disassemble the SOFTWARE, nor attempt in any other manner to obtain the source code.

No Separation of Components. The SOFTWARE is licensed as a single product. Its component parts may not be separated for use on more than one computer, nor otherwise used separately from the other parts.

No Rental. Customer may not rent or lease the SOFTWARE to someone else.

3. TERMINATION

This LICENSE will automatically terminate if Customer fails to comply with any of the terms and conditions hereof. In such event, Customer must destroy all copies of the SOFTWARE and all of its component parts.

Defensive Suspension. If Customer commences or participates in any legal proceeding against NVIDIA, then NVIDIA may, in its sole discretion, suspend or terminate all license grants and any other rights provided under this LICENSE during the pendency of such legal proceedings.

4. COPYRIGHT

All title and copyrights in and to the SOFTWARE (including but not limited to all images, photographs, animations, video, audio, music, text, and other information incorporated into the SOFTWARE), the accompanying printed materials, and any copies of the SOFTWARE, are owned by NVIDIA, or its suppliers. The SOFTWARE is protected by copyright laws and international treaty provisions. Accordingly, Customer is required to treat the SOFTWARE like any other copyrighted material, except as otherwise allowed pursuant to this LICENSE and that it may make one copy of the SOFTWARE solely for backup or archive purposes.

5. APPLICABLE LAW

This LICENSE shall be deemed to have been made in, and shall be construed pursuant to, the laws of the State of Delaware. The United Nations Convention on Contracts for the International Sale of Goods is specifically disclaimed.

6. DISCLAIMER OF WARRANTIES AND LIMITATION ON LIABILITY

6.1 No Warranties. TO THE MAXIMUM EXTENT PERMITTED BY APPLICABLE LAW, THE SOFTWARE IS PROVIDED "AS IS" AND NVIDIA AND ITS SUPPLIERS DISCLAIM ALL WARRANTIES OF ANY KIND OR NATURE, WHETHER EXPRESS, IMPLIED, OR STATUTORY, RELATING TO OR ARISING FROM THE SOFTWARE, INCLUDING, BUT NOT LIMITED TO, IMPLIED WARRANTIES OF MERCHANTABILITY, FITNESS FOR A PARTICULAR PURPOSE, TITLE, AND NON-INFRINGEMENT. Without limiting the foregoing, you are solely

responsible for determining and verifying that the SOFTWARE that you obtain and install is the appropriate version for your model of graphics controller board, operating system, and computer hardware.

6.2 No Liability for Consequential Damages. TO THE MAXIMUM EXTENT PERMITTED BY APPLICABLE LAW, IN NO EVENT SHALL NVIDIA OR ITS SUPPLIERS BE LIABLE FOR ANY SPECIAL, INCIDENTAL, INDIRECT, OR CONSEQUENTIAL DAMAGES WHATSOEVER (INCLUDING, WITHOUT LIMITATION, DAMAGES FOR LOSS OF BUSINESS PROFITS, LOSS OF DATA, BUSINESS INTERRUPTION, LOSS OF BUSINESS INFORMATION, OR ANY OTHER PECUNIARY LOSS) ARISING OUT OF THE USE OF OR INABILITY TO USE THE SOFTWARE, EVEN IF NVIDIA HAS BEEN ADVISED OF THE POSSIBILITY OF SUCH DAMAGES.

7. SYSTEM UPDATES

Customer hereby agrees and acknowledges that the SOFTWARE may access, collect non-personally identifiable information about, update, and configure Customer's system in order to properly optimize such system for use with the SOFTWARE. To the extent that Customer uses the SOFTWARE, Customer hereby consents to all of the foregoing, and represent and warrant that Customer has the right to grant such consent. In addition, Customer agrees that Customer is solely responsible for maintaining appropriate data backups and system restore points for Customer's system, and that NVIDIA will have no responsibility for any damage or loss to such system (including loss of data or access) arising from or relating to (a) any changes to the configuration, application settings, environment variables, registry, drivers, BIOS, or other attributes of the system (or any part of such system) initiated through the SOFTWARE; or (b) installation of any SOFTWARE or third party software patches through the NVIDIA Update Service. The SOFTWARE may contain links to websites and services. We encourage you to review the privacy statements on those sites and services that you choose to visit so that you can understand how they may collect, use and share your personal information. NVIDIA is not responsible for the privacy statements or practices of sites and services controlled by other companies or organizations.

Registration and Customer Information. Customer represents and warrants that the non-personally identifiable information that Customer has furnished in connection with its registration for the SOFTWARE is complete and accurate. Customer also acknowledges that from time to time, NVIDIA may collect, use, and disclose such information about Customer and/or Customer's system in connection with the SOFTWARE in accordance with NVIDIA's privacy policy, available at URL https://www.nvidia.com/object/privacy_policy.html If Customer does not wish the SOFTWARE to provide system updates as described in this Section 7, uncheck "Automatically check for updates" in the "Preferences" tab of the applicable NVIDIA Update control panel for the SOFTWARE.

8. MISCELLANEOUS

If any provision of this LICENSE is inconsistent with, or cannot be fully enforced under, the law, such provision will be construed as limited to the extent necessary to be consistent with and fully enforceable under the law. This LICENSE is the final, complete and exclusive agreement between the parties relating to the subject matter hereof, and supersedes all prior or contemporaneous understandings and agreements relating to such subject matter, whether oral or written. This LICENSE may only be modified in writing signed by an authorized officer of NVIDIA. Customer agrees that it will not ship, transfer or export the SOFTWARE into any country, or use the SOFTWARE in any manner, prohibited by the United States Bureau of Industry and Security or any export laws, restrictions or regulations.

BSD 3-Clause License

Copyright (c) 2017, Pytorch contributors
All rights reserved.

Redistribution and use in source and binary forms, with or without
modification, are permitted provided that the following conditions are met:

- * Redistributions of source code must retain the above copyright notice, this
list of conditions and the following disclaimer.
- * Redistributions in binary form must reproduce the above copyright notice,
this list of conditions and the following disclaimer in the documentation
and/or other materials provided with the distribution.
- * Neither the name of the copyright holder nor the names of its
contributors may be used to endorse or promote products derived from
this software without specific prior written permission.

THIS SOFTWARE IS PROVIDED BY THE COPYRIGHT HOLDERS AND CONTRIBUTORS "AS IS"
AND ANY EXPRESS OR IMPLIED WARRANTIES, INCLUDING, BUT NOT LIMITED TO, THE
IMPLIED WARRANTIES OF MERCHANTABILITY AND FITNESS FOR A PARTICULAR PURPOSE ARE
DISCLAIMED. IN NO EVENT SHALL THE COPYRIGHT HOLDER OR CONTRIBUTORS BE LIABLE
FOR ANY DIRECT, INDIRECT, INCIDENTAL, SPECIAL, EXEMPLARY, OR CONSEQUENTIAL
DAMAGES (INCLUDING, BUT NOT LIMITED TO, PROCUREMENT OF SUBSTITUTE GOODS OR
SERVICES; LOSS OF USE, DATA, OR PROFITS; OR BUSINESS INTERRUPTION) HOWEVER
CAUSED AND ON ANY THEORY OF LIABILITY, WHETHER IN CONTRACT, STRICT LIABILITY,
OR TORT (INCLUDING NEGLIGENCE OR OTHERWISE) ARISING IN ANY WAY OUT OF THE USE
OF THIS SOFTWARE, EVEN IF ADVISED OF THE POSSIBILITY OF SUCH DAMAGE.

From PyTorch:

Copyright (c) 2016- Facebook, Inc (Adam Paszke)
Copyright (c) 2014- Facebook, Inc (Soumith Chintala)
Copyright (c) 2011-2014 Idiap Research Institute (Ronan Collobert)
Copyright (c) 2012-2014 Deepmind Technologies (Koray Kavukcuoglu)
Copyright (c) 2011-2012 NEC Laboratories America (Koray Kavukcuoglu)
Copyright (c) 2011-2013 NYU (Clement Farabet)
Copyright (c) 2006-2010 NEC Laboratories America (Ronan Collobert, Leon Bottou, Iain Melvin, Jason Weston)
Copyright (c) 2006 Idiap Research Institute (Samy Bengio)

Copyright (c) 2001-2004 Idiap Research Institute (Ronan Collobert, Samy Bengio, Johnny Mariethoz)

From Caffe2:

Copyright (c) 2016-present, Facebook Inc. All rights reserved.

All contributions by Facebook:

Copyright (c) 2016 Facebook Inc.

All contributions by Google:

Copyright (c) 2015 Google Inc.

All rights reserved.

All contributions by Yangqing Jia:

Copyright (c) 2015 Yangqing Jia

All rights reserved.

All contributions by Kakao Brain:

Copyright 2019-2020 Kakao Brain

All contributions by Cruise LLC:

Copyright (c) 2022 Cruise LLC.

All rights reserved.

All contributions by Arm:

Copyright (c) 2021, 2023-2024 Arm Limited and/or its affiliates

All contributions from Caffe:

Copyright(c) 2013, 2014, 2015, the respective contributors

All rights reserved.

All other contributions:

Copyright(c) 2015, 2016 the respective contributors

All rights reserved.

Caffe2 uses a copyright model similar to Caffe: each contributor holds copyright over their contributions to Caffe2. The project versioning records all such contribution and copyright details. If a contributor wants to further mark their specific copyright on a particular contribution, they should indicate their copyright solely in the commit message of the change when it is committed.

All rights reserved.

Redistribution and use in source and binary forms, with or without modification, are permitted provided that the following conditions are met:

1. Redistributions of source code must retain the above copyright notice, this list of conditions and the following disclaimer.
2. Redistributions in binary form must reproduce the above copyright notice, this list of conditions and the following disclaimer in the documentation and/or other materials provided with the distribution.
3. Neither the names of Facebook, Deepmind Technologies, NYU, NEC Laboratories America and IDIAP Research Institute nor the names of its contributors may be used to endorse or promote products derived from this software without specific prior written permission.

THIS SOFTWARE IS PROVIDED BY THE COPYRIGHT HOLDERS AND CONTRIBUTORS "AS IS" AND ANY EXPRESS OR IMPLIED WARRANTIES, INCLUDING, BUT NOT LIMITED TO, THE IMPLIED WARRANTIES OF MERCHANTABILITY AND FITNESS FOR A PARTICULAR PURPOSE ARE DISCLAIMED. IN NO EVENT SHALL THE COPYRIGHT OWNER OR CONTRIBUTORS BE LIABLE FOR ANY DIRECT, INDIRECT, INCIDENTAL, SPECIAL, EXEMPLARY, OR CONSEQUENTIAL DAMAGES (INCLUDING, BUT NOT LIMITED TO, PROCUREMENT OF SUBSTITUTE GOODS OR SERVICES; LOSS OF USE, DATA, OR PROFITS; OR BUSINESS INTERRUPTION) HOWEVER CAUSED AND ON ANY THEORY OF LIABILITY, WHETHER IN CONTRACT, STRICT LIABILITY, OR TORT (INCLUDING NEGLIGENCE OR OTHERWISE) ARISING IN ANY WAY OUT OF THE USE OF THIS SOFTWARE, EVEN IF ADVISED OF THE POSSIBILITY OF SUCH DAMAGE.