

KAIROS Update overview

STEPS

1. Check the current version
2. Install the latest version of KAIROS Creator (GUI Software) to PC
3. Update KAIROS Core (Main frame) and
KAIROS Control (Control Panel) by using KAIROS Creator

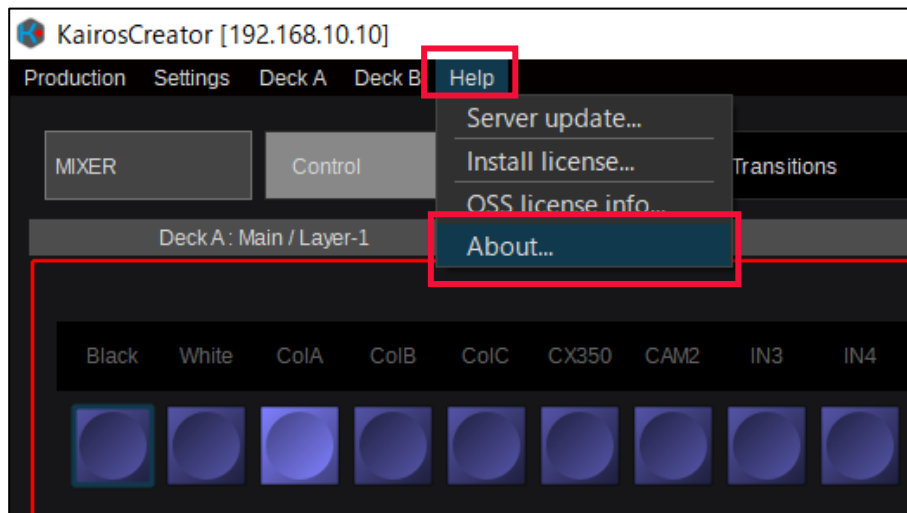
- KAIROS Creator (GUI Software) must be activated in advance.
- KAIROS Core (Main frame) and GUI PC must be on the same network.

STEP 1

- KAIROS Creator (GUI software)
- KAIROS Core (Main frame)

You can check the current version in KAIROS Creator. (See the figure below)

Select [Help] - [About]



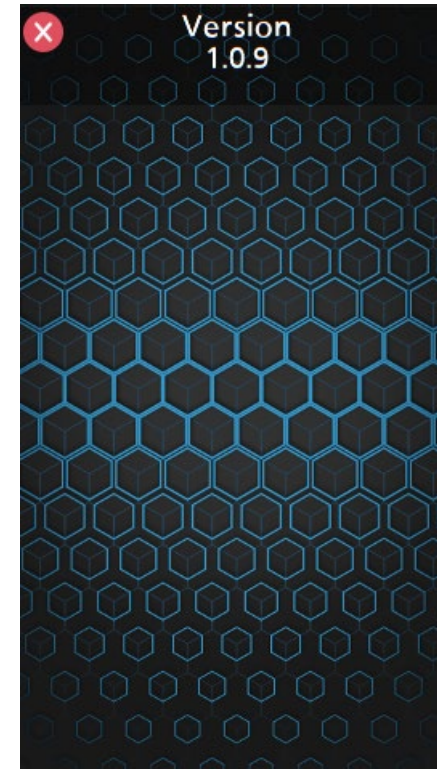
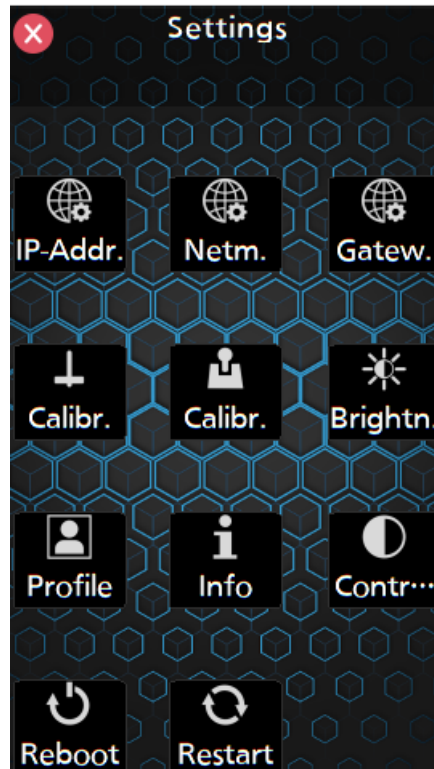
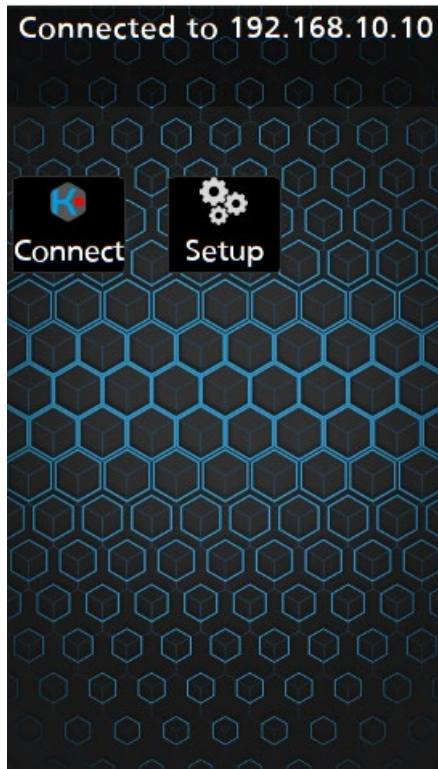
KAIROS Creator (GUI software)

KAIROS Core (Main frame)

- KAIROS Control (Control Panel)

The information of Control Panel can be displayed on Multi-purpose delegable numeric keypad (MENU PANEL)

Select [SETUP] - [Info.]



KAIROS Creator Installation

STEP 2



KAIROS Creator

From Ver.1.4.x or later, in addition to the KAIROS Creator app, Some features of KAIROS Creator can be installed as three independent application software*.

* Kairos Media / Kairos Painter / Kairos Audio Mixer



Kairos Media

- Stills
- Ram Player
- Audio Player
- Clip Player



Kairos Painter

- Painter



Kairos Audio Mixer

- Audio Mixer
- Audio Player



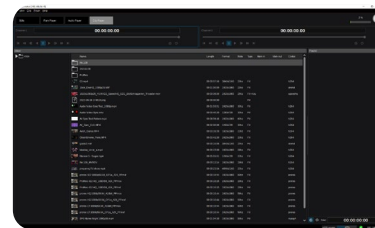
KAIROS Creator



KAIROS Core



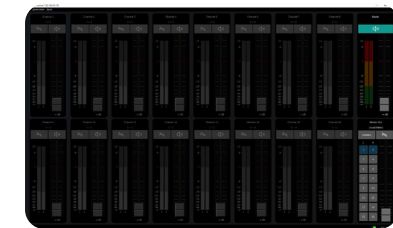
KAIROS Media



KAIROS Painter



KAIROS Audio Mixer



KAIROS Creator Installation (Windows)

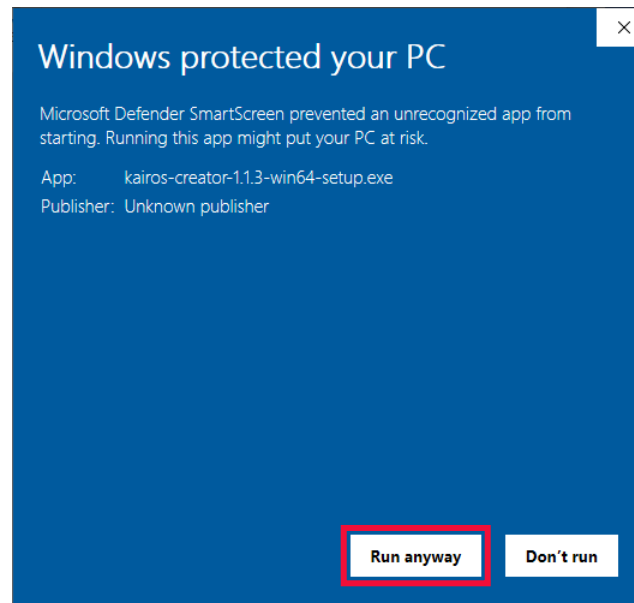
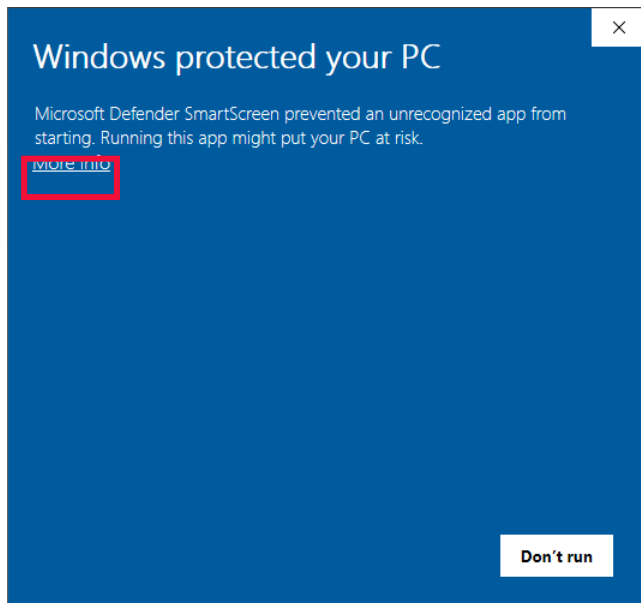
STEP 2 (Windows)

If KAIROS Creator is running, please close it.

1. Download "**Kairos Creator** DP91000462 *.zip" file from PASS KAIROS member's portal site https://panasonic.biz/sav/kairos_e/ and unzip it.


Double-click the file "kairos-creator****.setup.exe" to execute it.

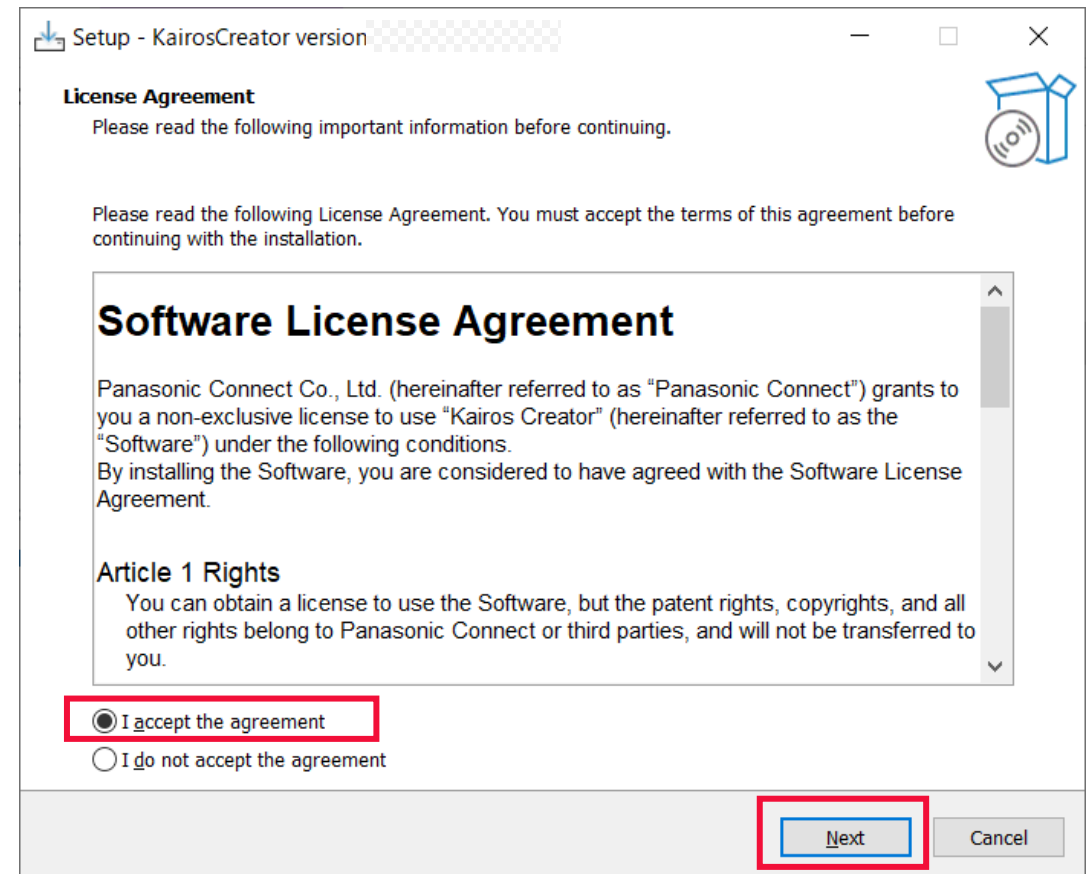
The following warning window may be displayed.
In this case, click "More info" and then click "Run anyway".



KAIROS Creator Installation (Windows)

On the Select the install mode screen.
Click [**Next**] to start to install the KAIROS Creator.

 kairo-creator-devel-17007-win64-setup.exe

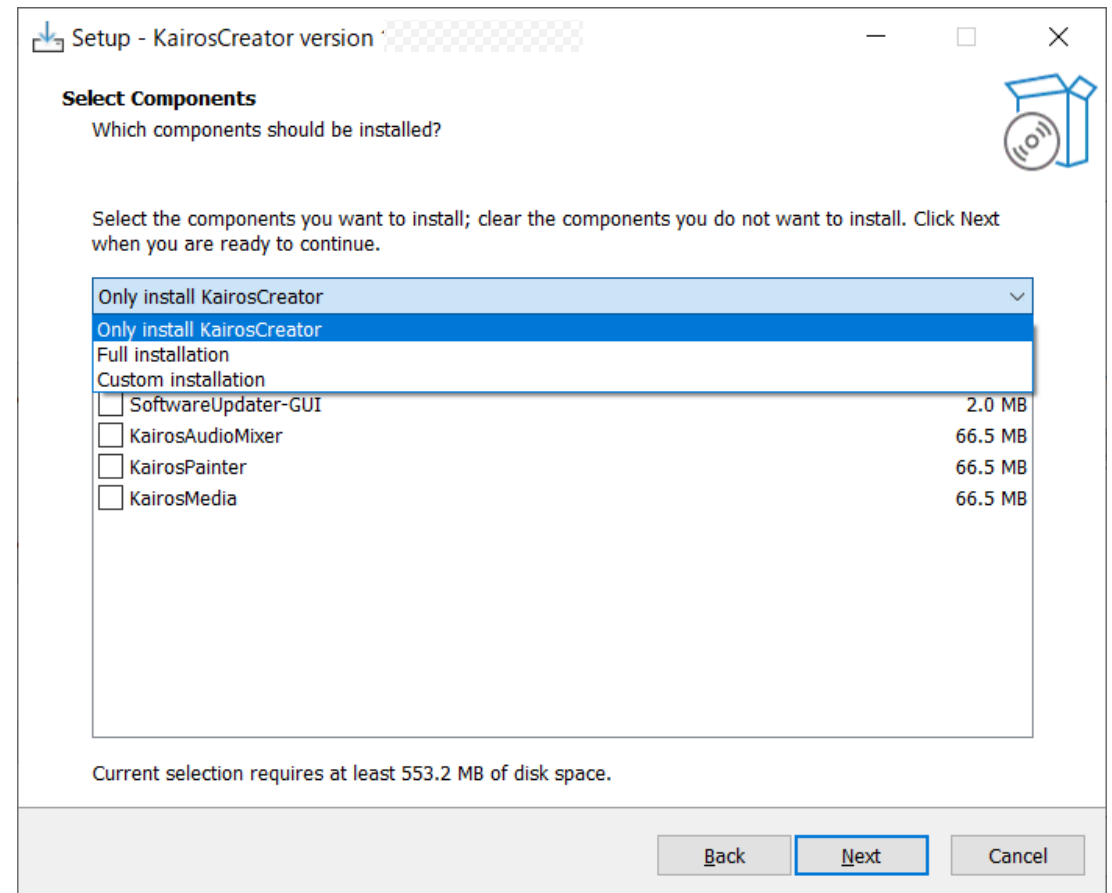
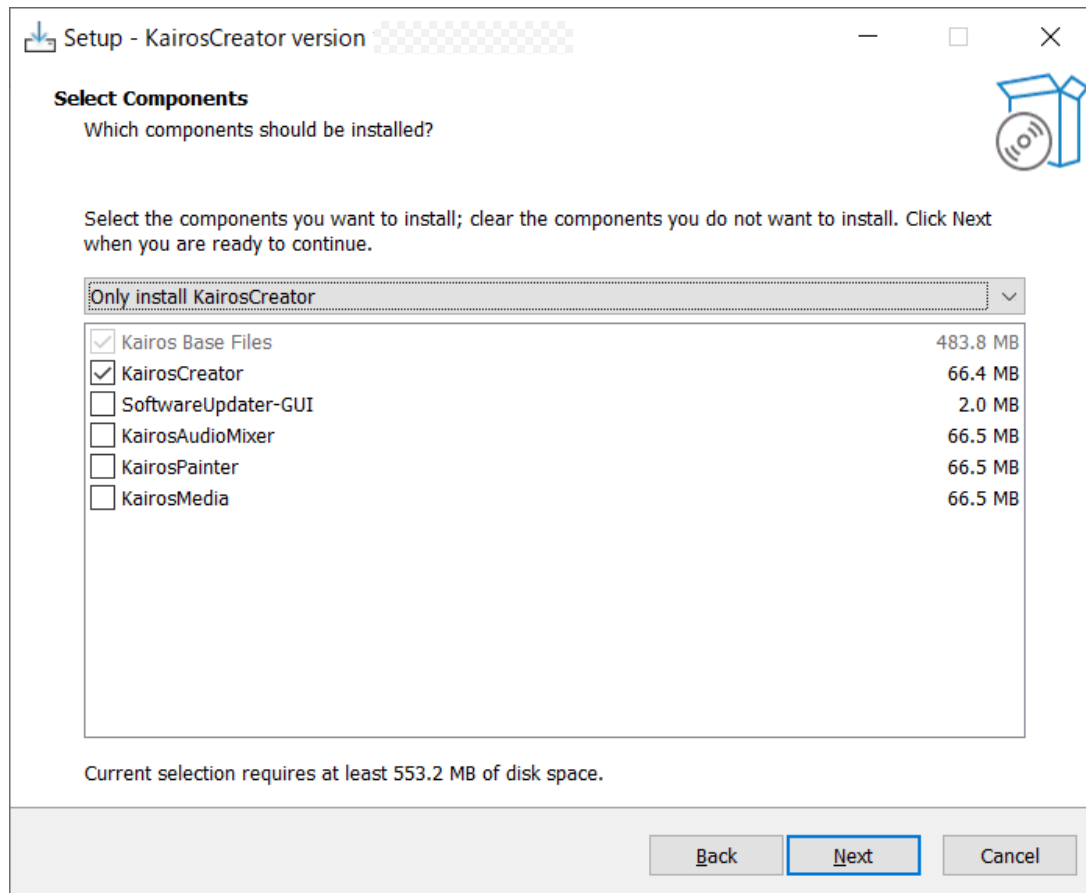


KAIROS Creator Installation (Windows)

2. Select the application software to install using one of the methods below.
After clicking [Next], click [Install] to continue the installation.

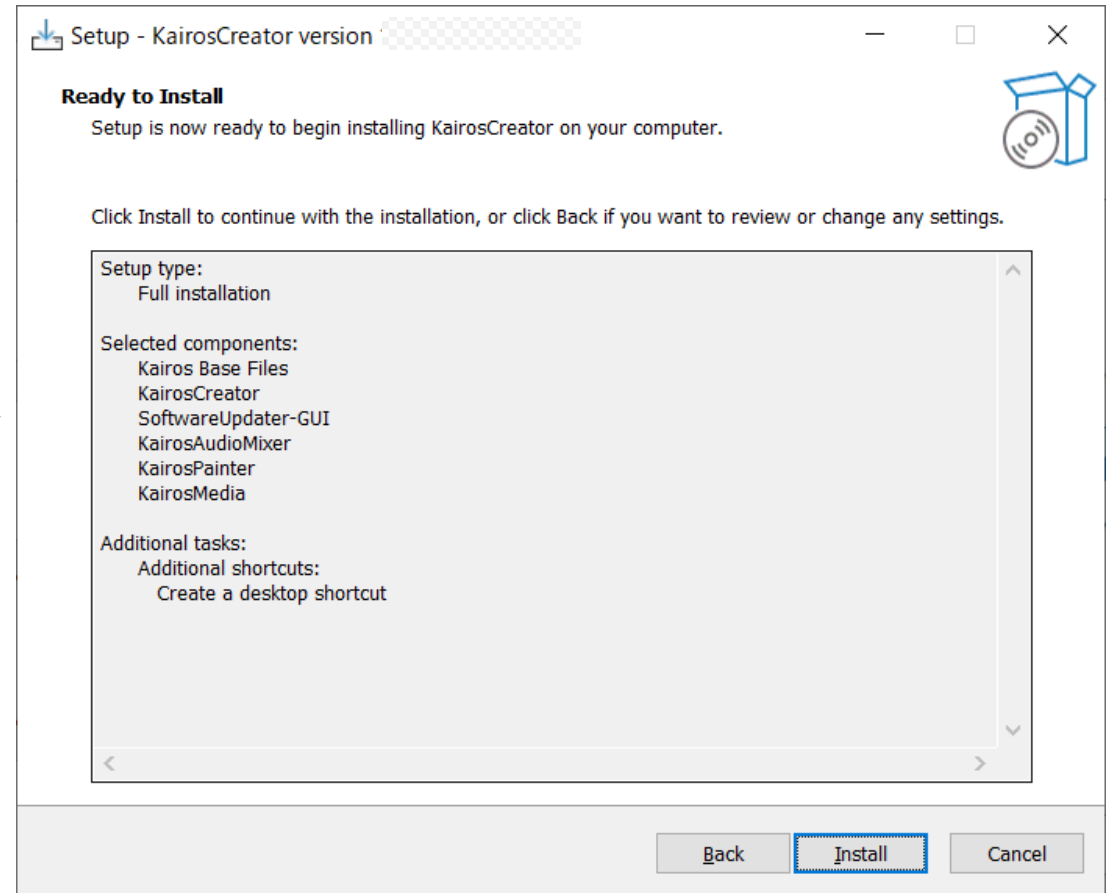
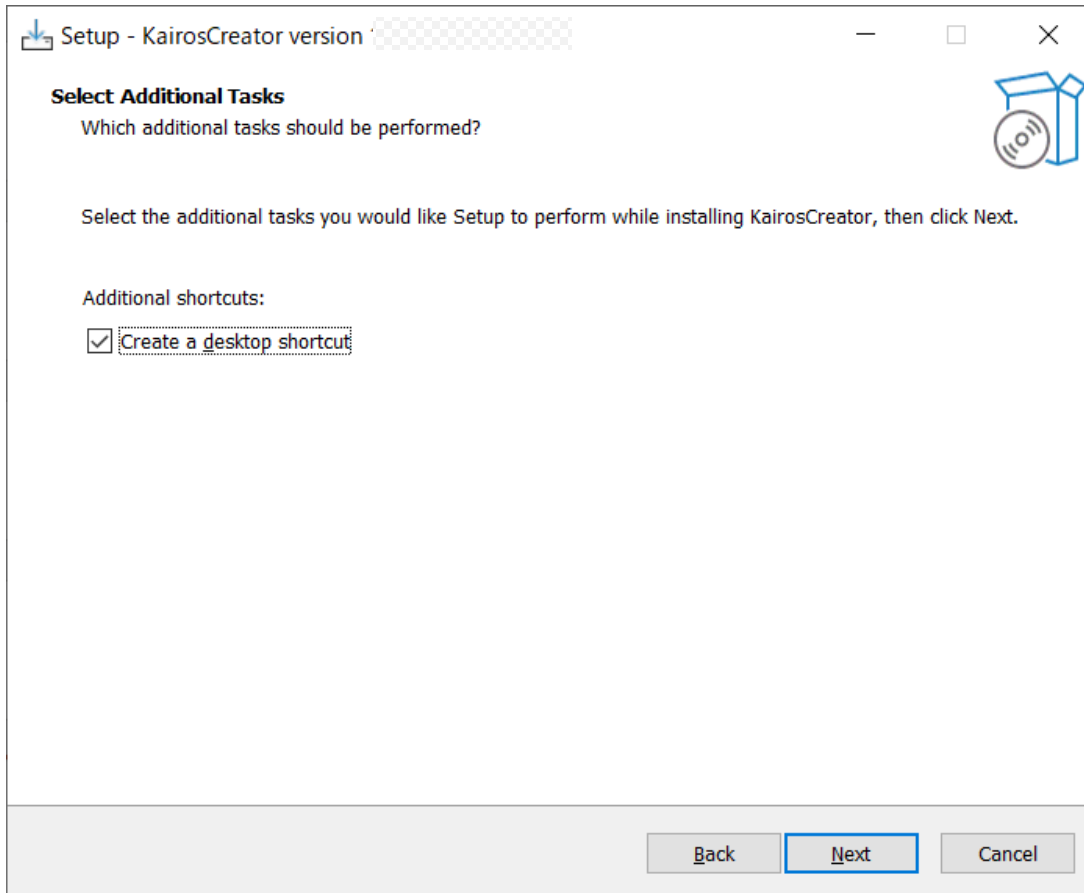
(Left figure) Checkbox : KairosCreator / SoftwareUpdater-GUI / KairosAudioMixer / KairosPainter / KairosMedia

(Right figure) Drop-down list: Only install KairosCreator/ Full installation/ Custom installation



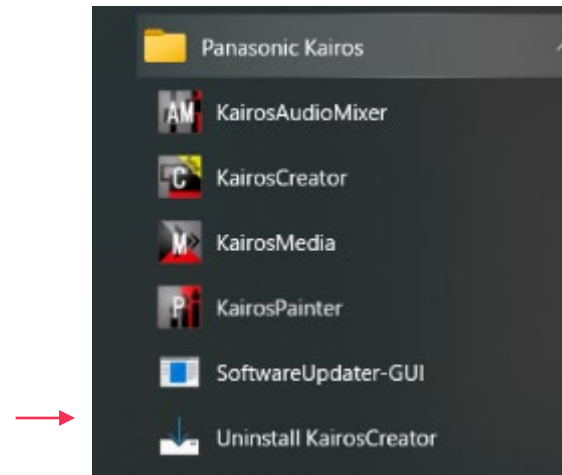
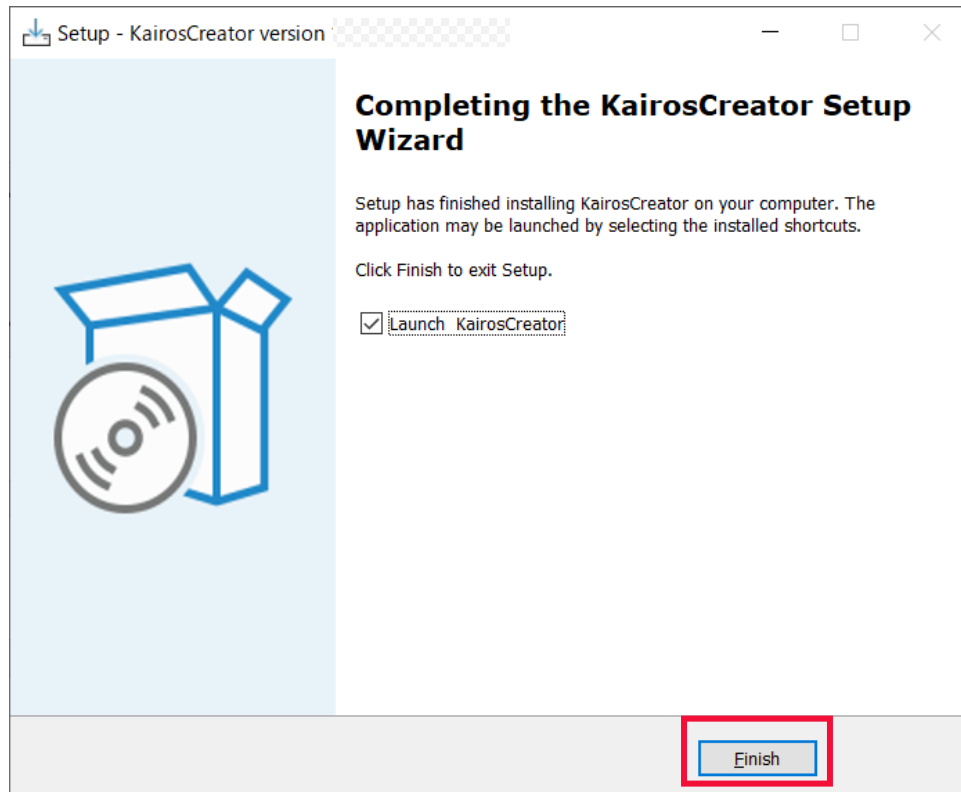
KAIROS Creator Installation (Windows)

3. Select whether to create a shortcut on your desktop and click [Next].
After confirming the software to install, click [Install] to continue the installation.



KAIROS Creator Installation (Windows)

4. Installation takes about several tens of seconds. During this time, be careful not to turn off the power.
5. Installation is complete when the screen below is displayed.



The icon of KairosCreator of Ver.1.4 has been changed. When updating from an older version, the icon may not change depending on the PC environment due to the cache, etc. Please use it after confirming whether it is the latest version at the time of start-up.

KAIROS Creator Installation (Mac)

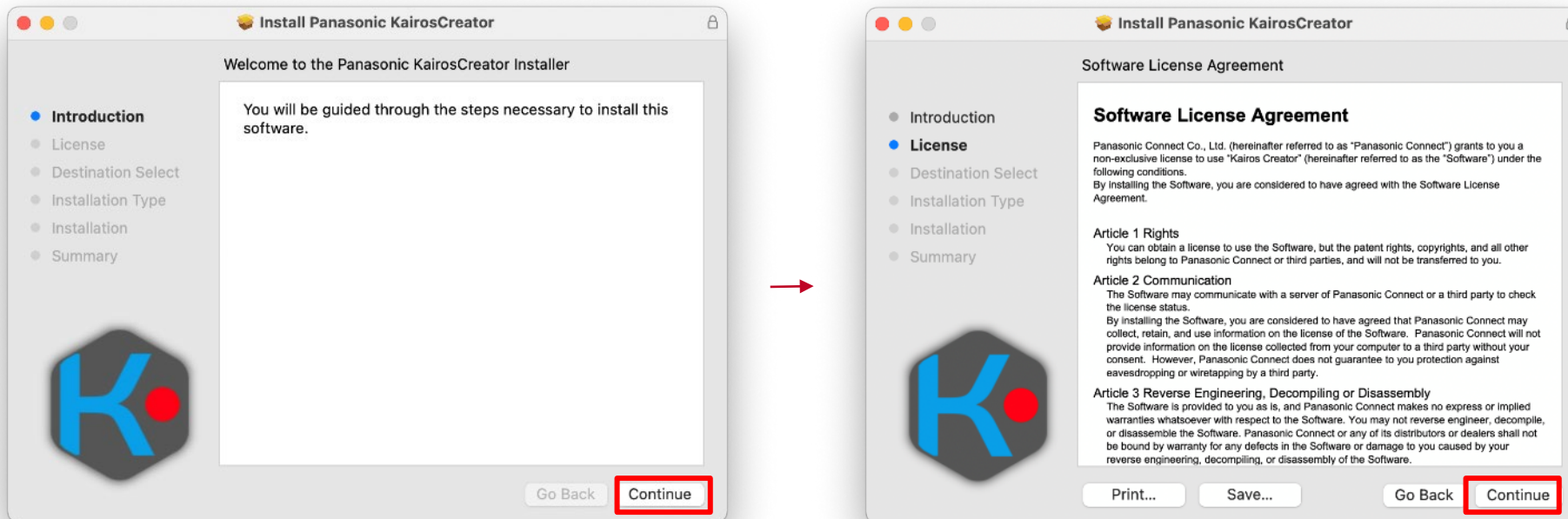
STEP 2 (Mac)

If KAIROS Creator is running, please close it.

1. Download "**Kairos Creator** DP91000516 *.zip" file from the PASS KAIROS member's portal site https://panasonic.biz/sav/kairos_e/ and unzip it.

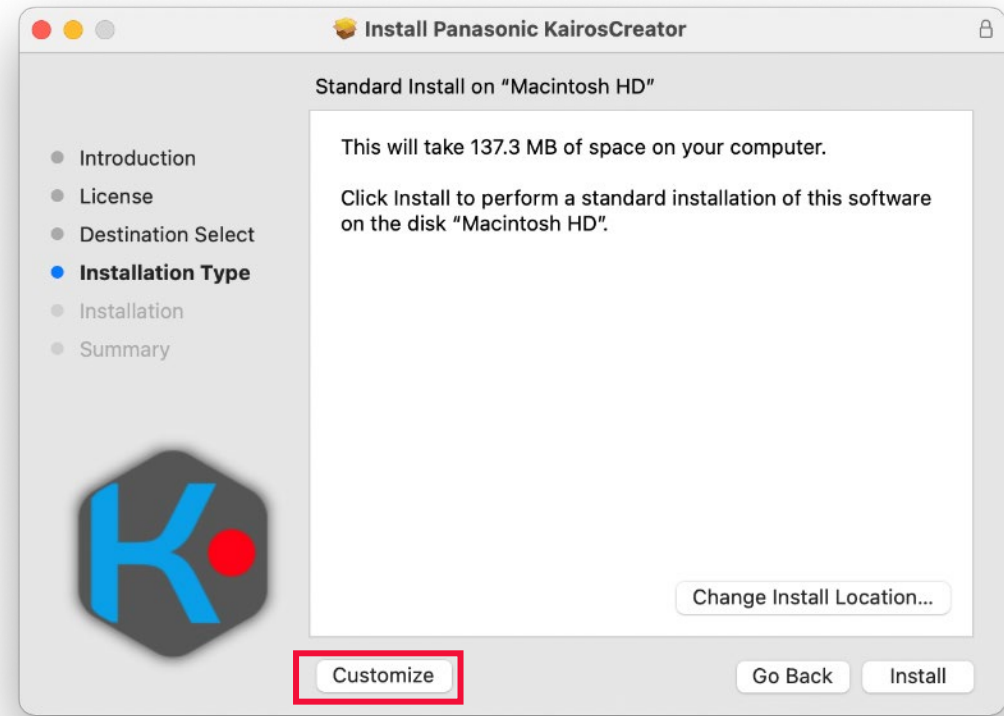
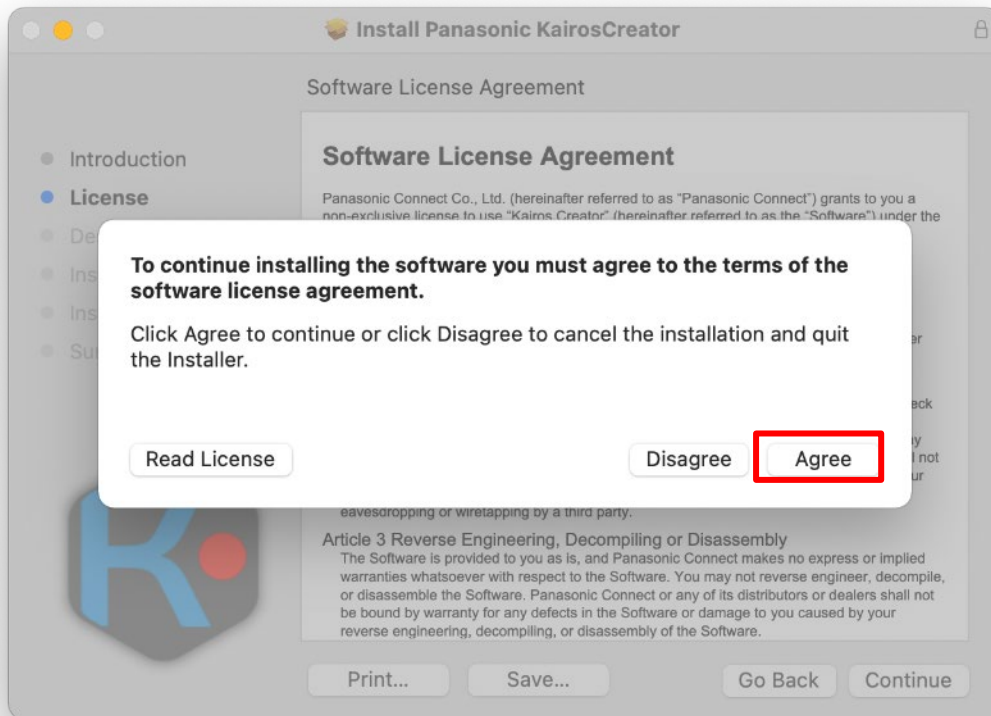
Double-click on the file "kairos-creator****.macosx.pkg" to execute it.

Click [Continue] to move to License Agreement screen and read the Software License Agreement. If you can agree, click [Continue].



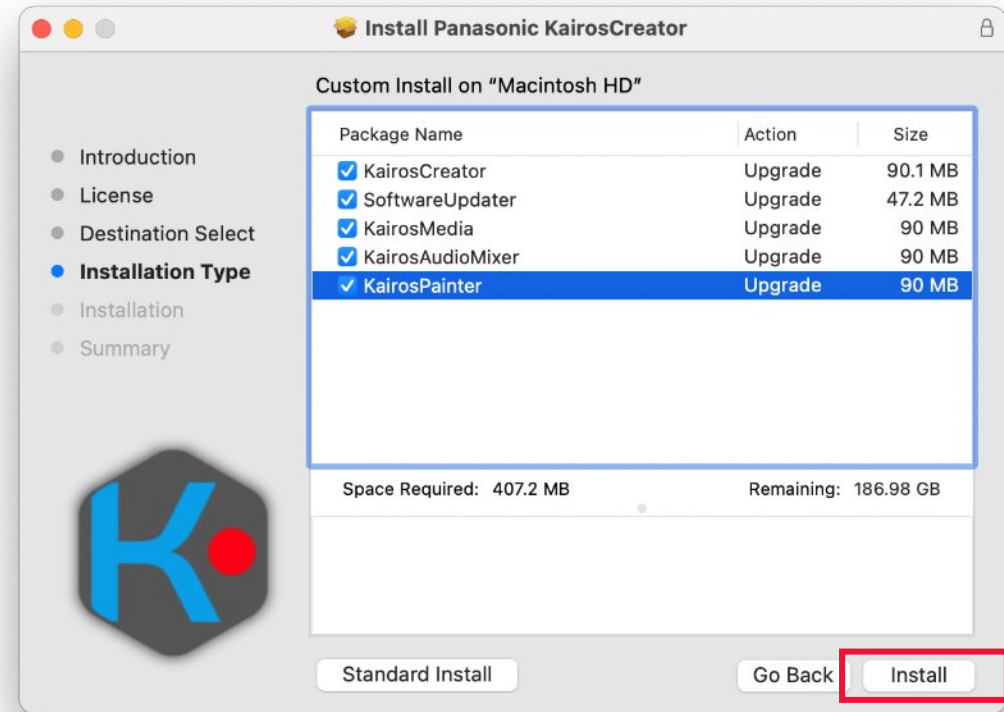
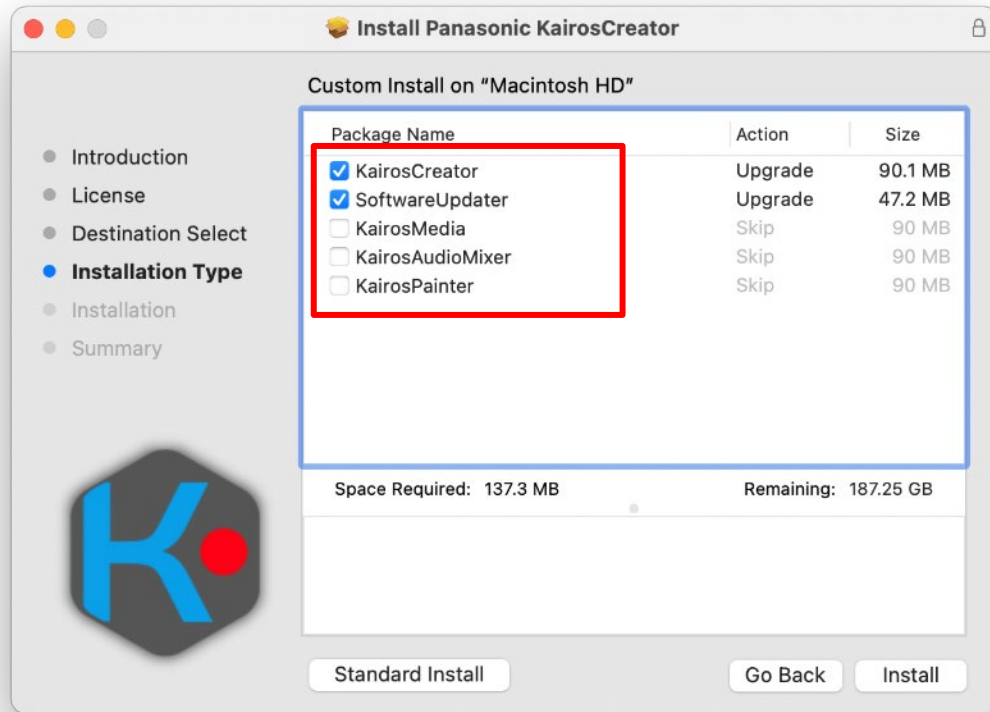
KAIROS Creator Installation (Mac)

2. Click [Agree] to move to "Install Location" screen.
3. Click [Customize] to select customized installation.



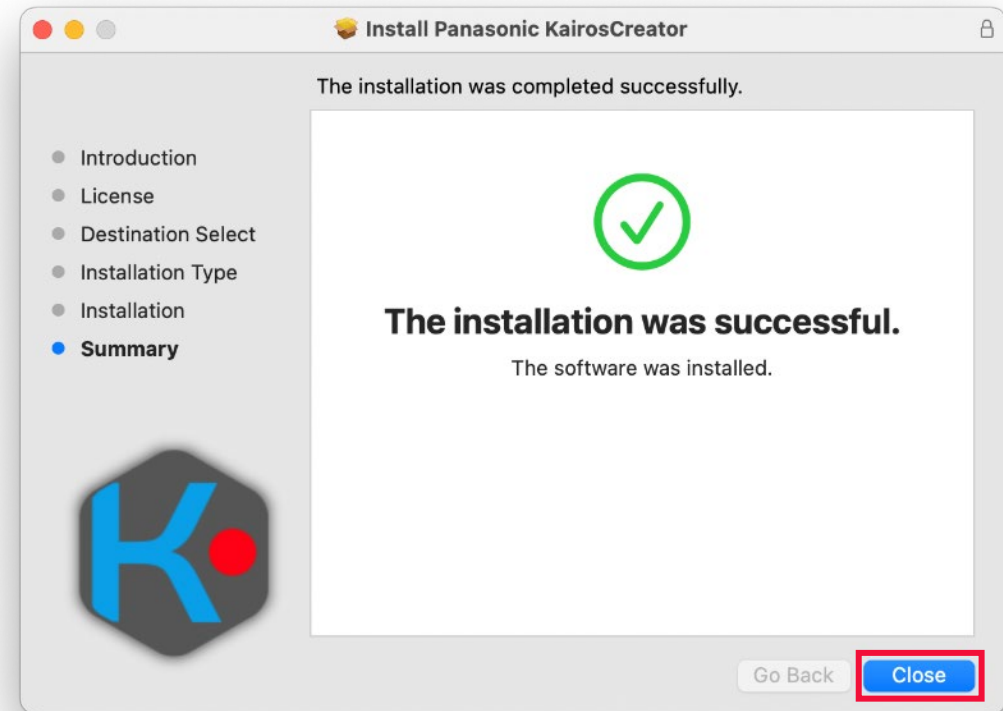
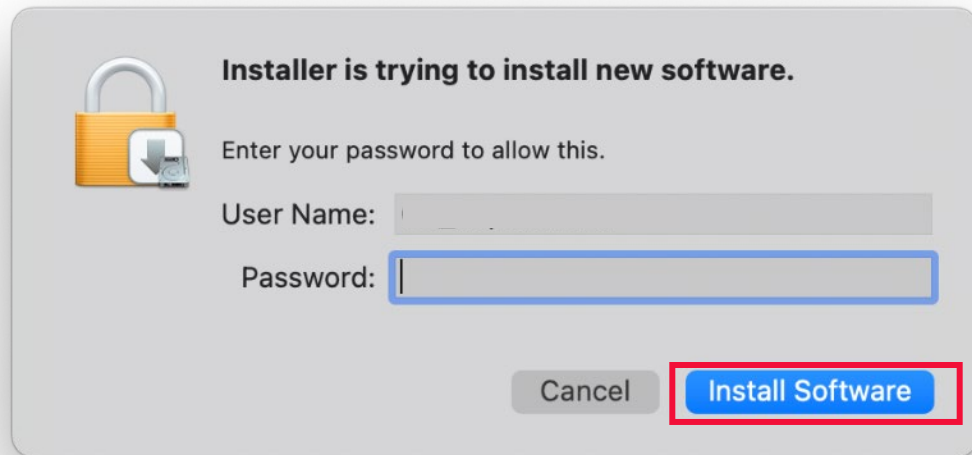
KAIROS Creator Installation (Mac)

4. Select the application software to install
KairosCreator / SoftwareUpdater / KairosMedia / KairosAudioMixer / KairosPainter
5. Check your install location and then click [Install].



KAIROS Creator Installation (Mac)

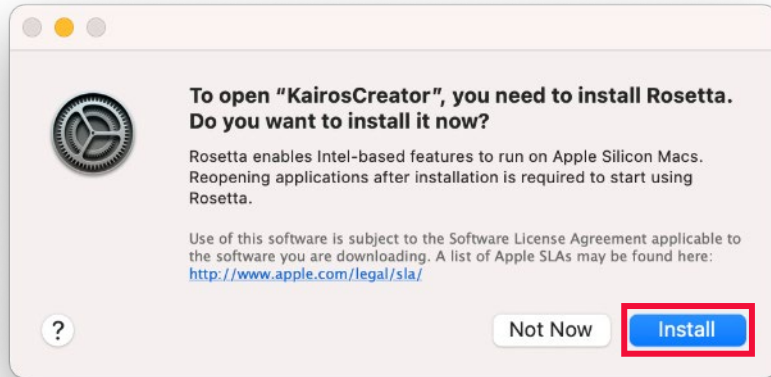
6. On the installation confirmation screen, type password and click [Install Software].
7. Installation takes about 1 minuet. Do not turn off the Mac during installation.
8. Installation is complete when the screen below is displayed. Click [Close] to finish the installation.



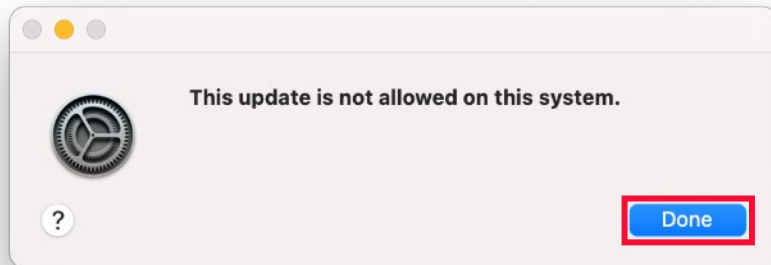
KAIROS Creator Installation (Mac)

Note:

In the case of the following screen is displayed on M1 Mac, click [Install] to install Rosetta.



In the case of the following warning is displayed, please check the internet connection on your Mac. Click [Done] and try again the installation from the beginning.



KAIROS Core / KAIROS Control Update

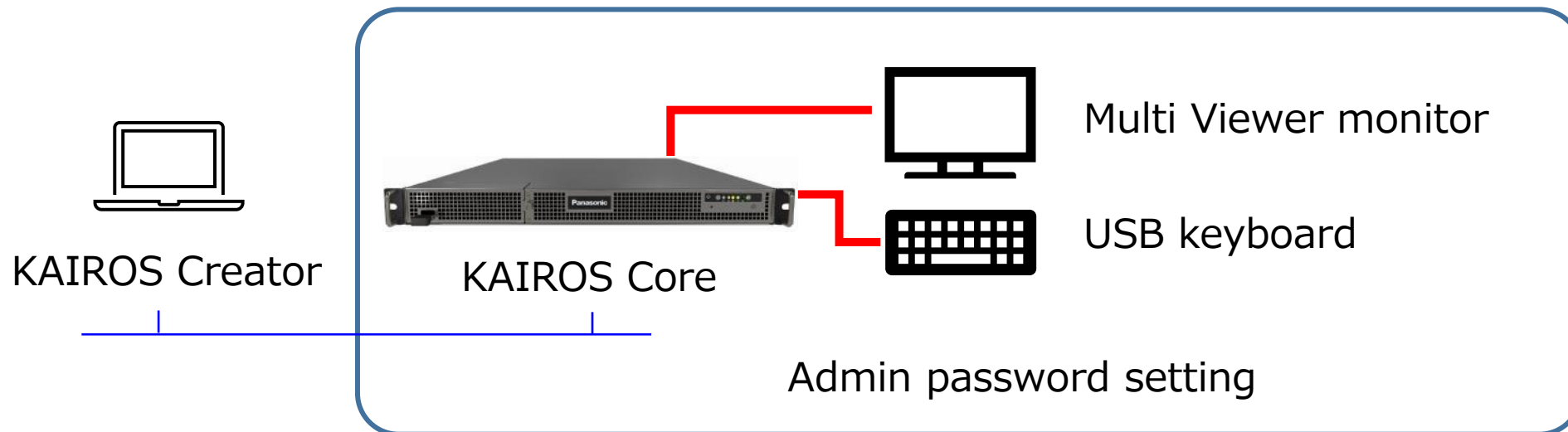
KAIROS Core / KAIROS Control Update

STEP 3

Overview

KAIROS Core (Main frame) and KAIROS Control (Control Panel) can be updated with the latest version of KAIROS Creator (GUI software) updated in Step 2.

- **Updating to Ver.1.3.2 or higher requires a Multi Viewer monitor and a USB keyboard.**
- **When starting up for the first time after the update, it is necessary to set the administrator password.** Please manage the password properly as it is also necessary for backing up media files.



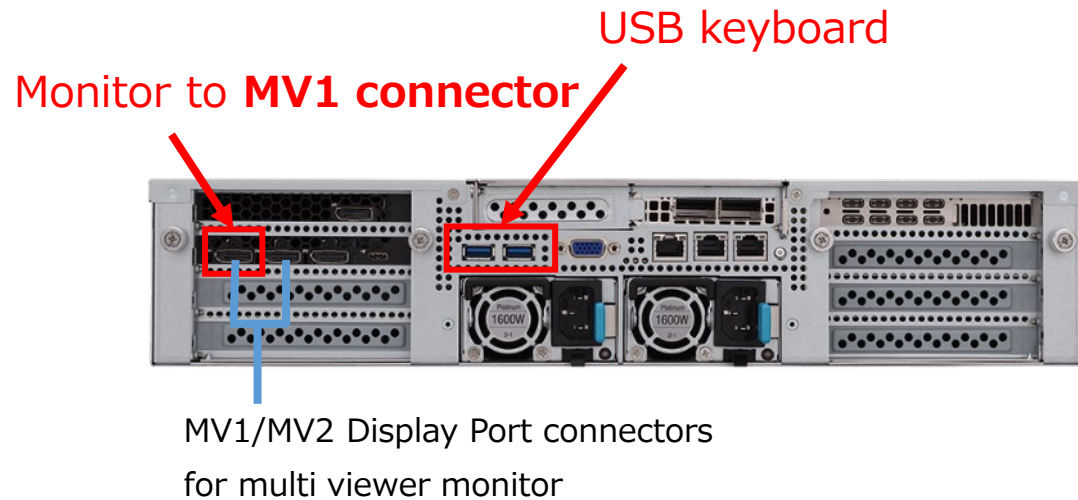
KAIROS Core / KAIROS Control Update

Preparation

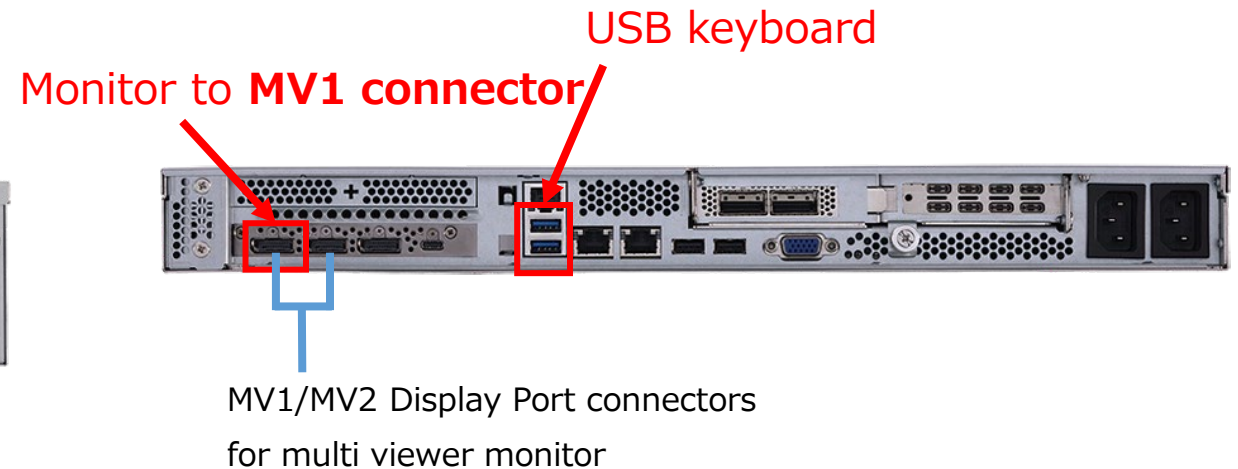
- (1) Connect a USB keyboard to the USB port of KAIROS Core.
- (2) Connect a Muti Viewer monitor to DisplayPort MV1 connector.

Connect the monitor using a DisplayPort proprietary cable.

Please unplug the cable from the MV2 connector during the update process. If the resolutions of the two monitors connected to the MV1 and MV2 terminals are different, the settings may not be completed, and KAIROS core may not start.



AT-KC1000



AT-KC100

KAIROS Core / KAIROS Control Update

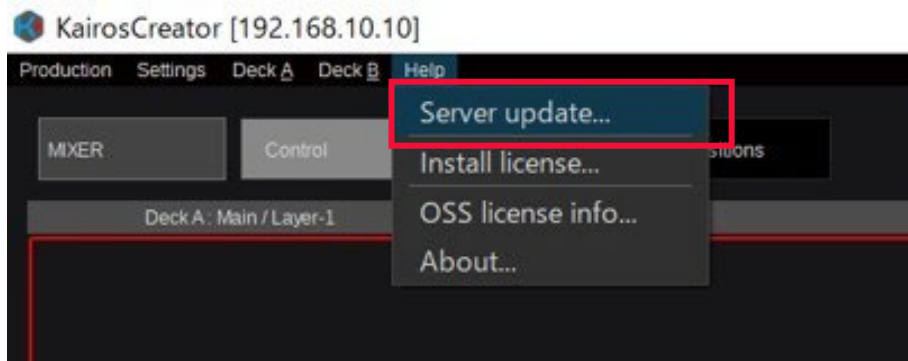
Update procedure

1. Please start KAIROS Core before updating and make sure it is working properly.
2. Download the firmware file “*****.zip” file from PASS KAIROS member’s portal site https://panasonic.biz/sav/kairos_e/ and unzip it.

KAIROS Core (Main frame) firmware file: DP91000483 *.zip -> “kairos-core-***.tar”

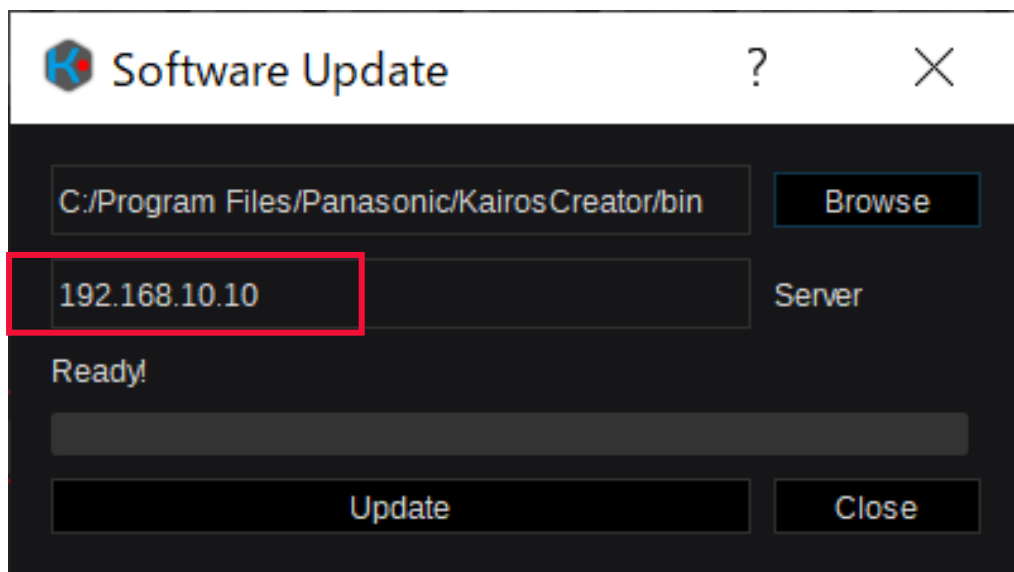
KAIROS Control (Control Panel) firmware file: DP91000484 *.zip -> “kairos-control-***.tar”

3. Launch KAIROS Creator (GUI Software) and select [Help] – [Server update]

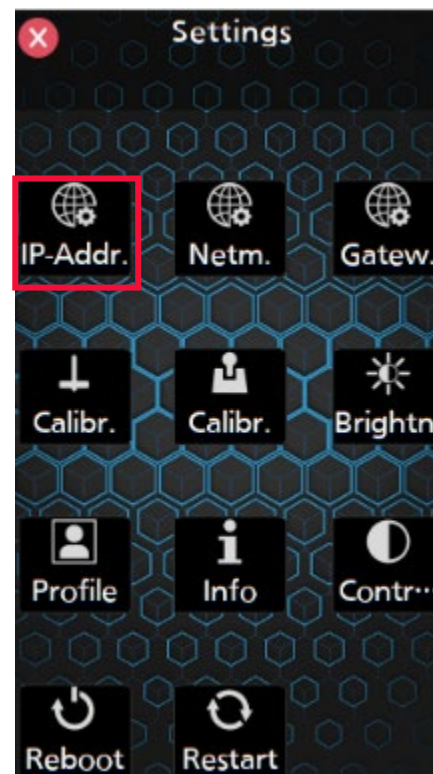


KAIROS Core / KAIROS Control Update

4. Enter the IP address of KAIROS Core or KAIROS Control



You can check IP address of KAIROS Control on Panel [Setup] –[IP-Addr.] (Example below)

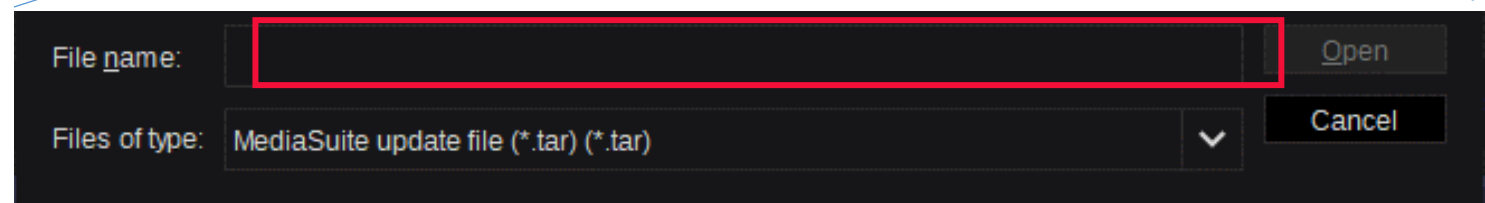
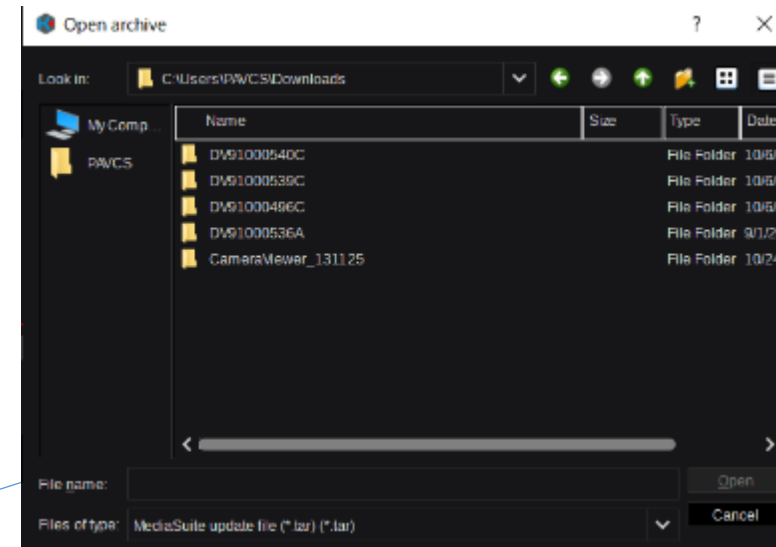
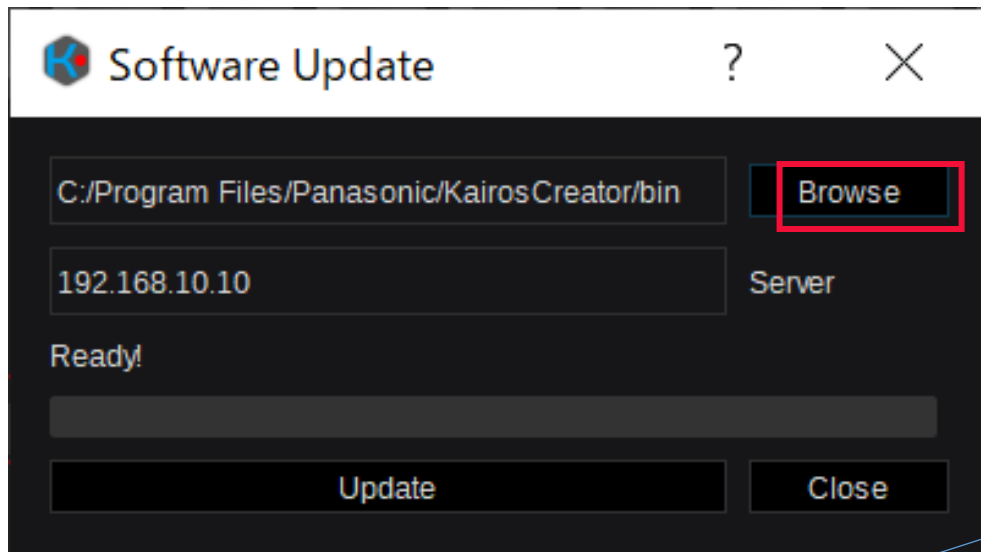


KAIROS Core / KAIROS Control Update

5. Click [Browse] and select the firmware

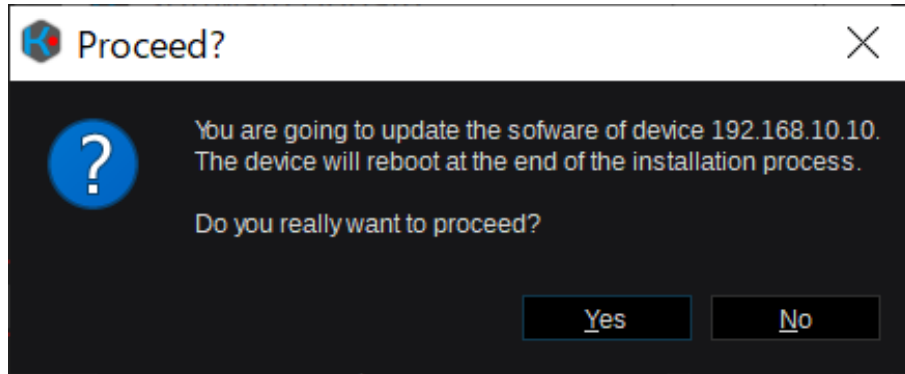
KAIROS Core (Main frame) firmware file: (Example: DP91000483 *->) "kairos-core-***.tar"

KAIROS Control (Control Panel) firmware file: (Example: DP91000484 *->) "kairos-control-***.tar"

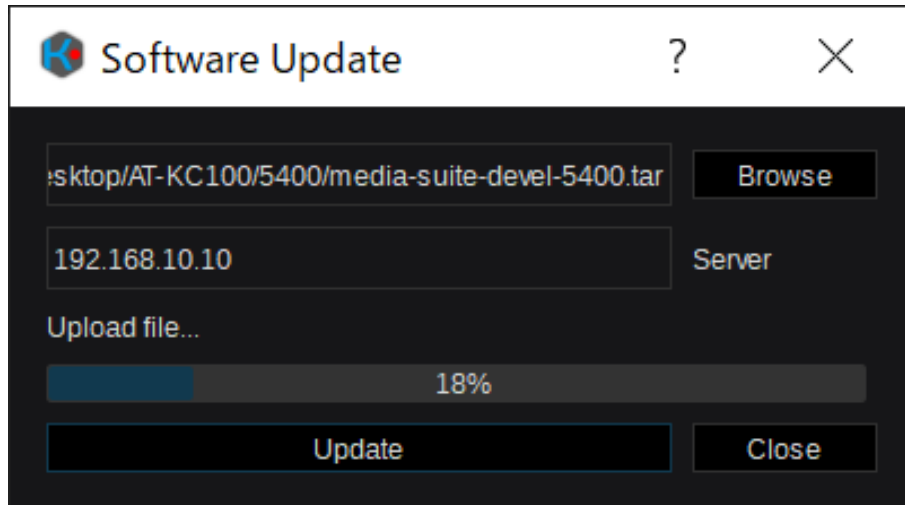


KAIROS Core / KAIROS Control Update

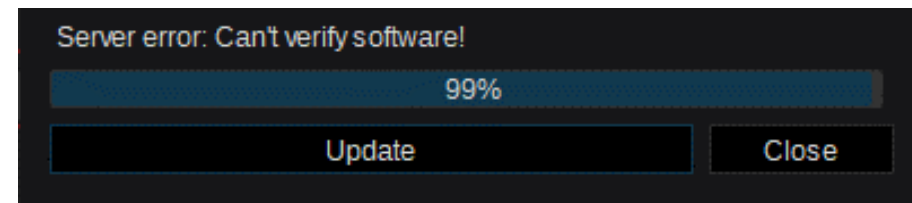
6. Click [Update] and then [Yes].



7. The update time is as follows. During this time, be careful not to turn off the power.
KAIROS Core: about 2-3 min. (It will take 7-8 minutes to restart the Core after that)
KAIROS Control: about 1 min.



* If you specify the wrong firmware, the following error will be displayed during the update. The update will be canceled and the previous state will be restored.

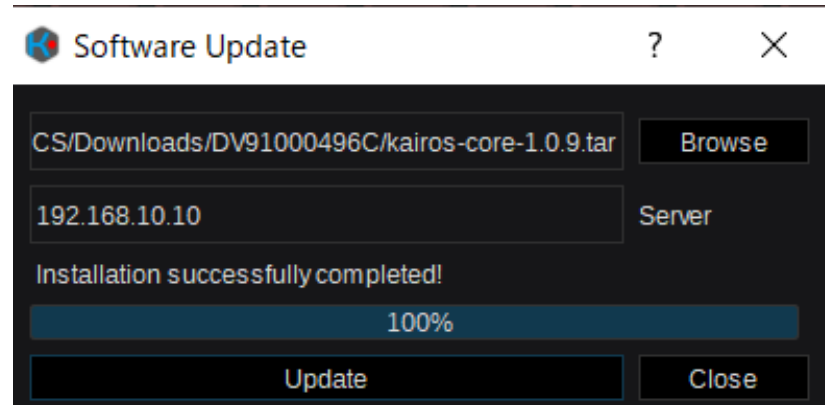


KAIROS Core / KAIROS Control Update

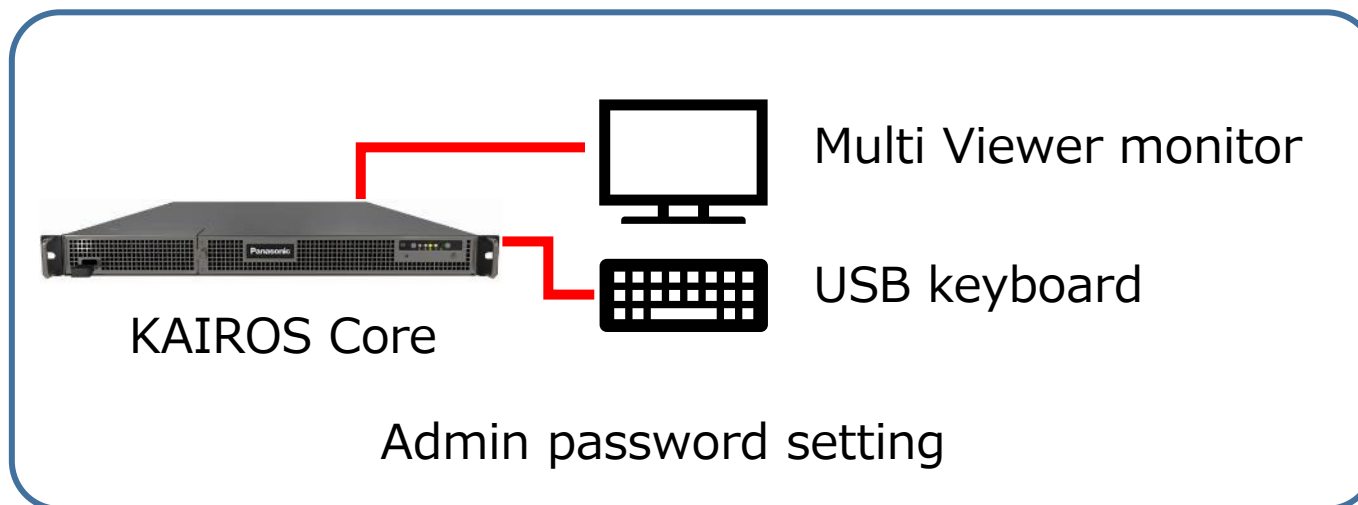
8. It will restart automatically when the update is complete.

You can close the KAIROS Creator screen shown on the right.

The KAIROS Control update is now complete. Please check the version.



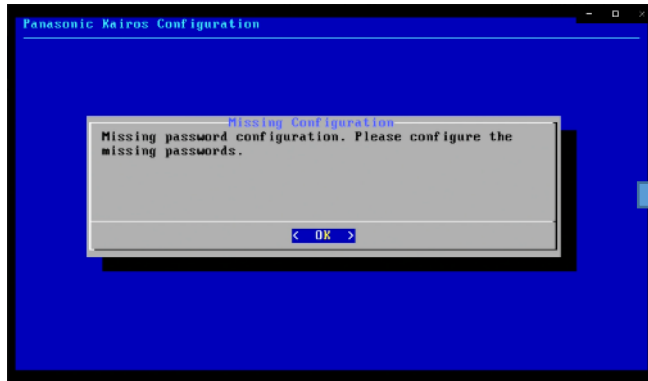
9. **It takes 7-8 minutes to restart KAIROS Core. In the final process, operate the KAIROS Core monitor screen and set the password.**



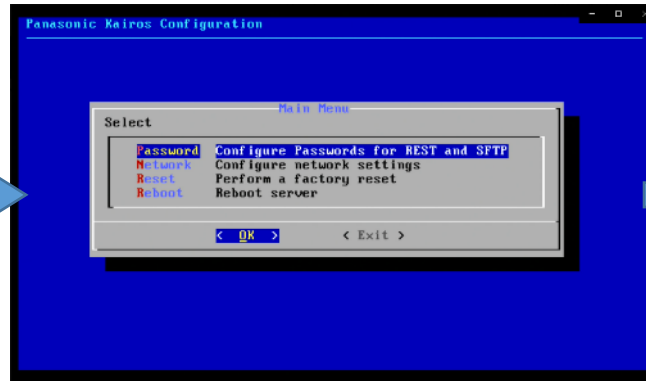
KAIROS Core / KAIROS Control Update

10. Administrator password setting: Set both "REST" and "FILE".

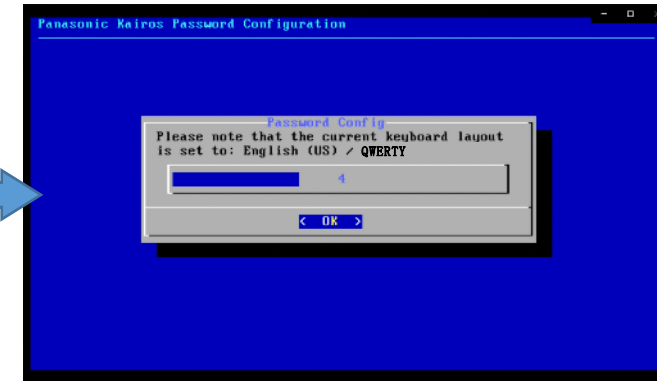
The display of the monitor screen of KAIROS Core is explained below.
Please operate with a USB keyboard connected to KAIROS Core.



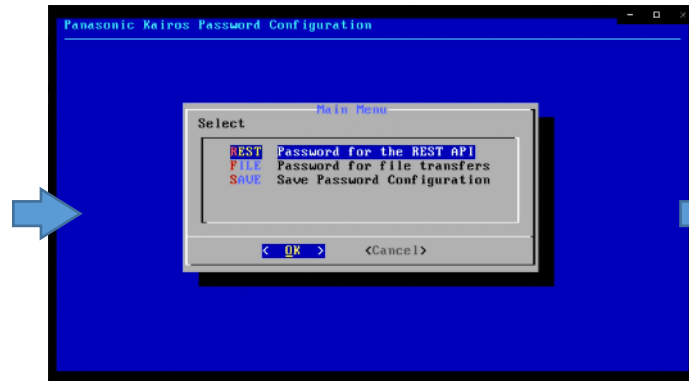
1. Press "OK" on the "missing password set" screen display.



2. Select "Password" in the menu display and press the Enter key.



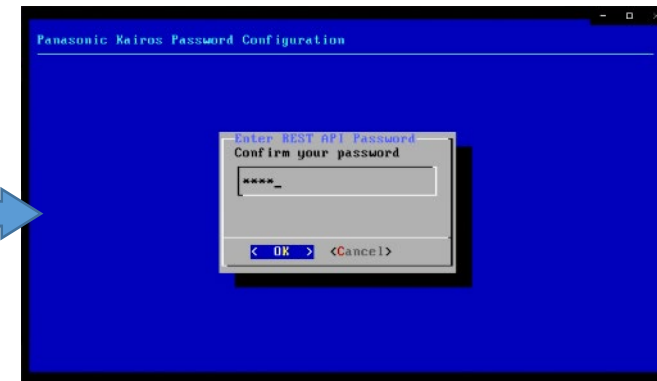
3. Confirm the Keyboard Layout (displayed for 10 seconds), "OK".



4. Select settings
REST: For REST APIs
FILE: For importing and exporting files
from Creator



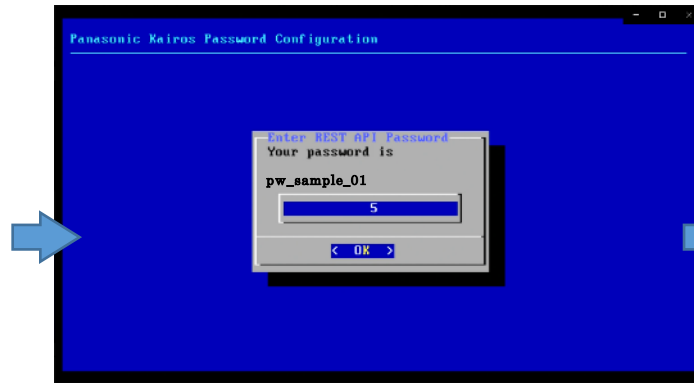
5. Enter your password.



6. Re-enter your password.

KAIROS Core / KAIROS Control Update

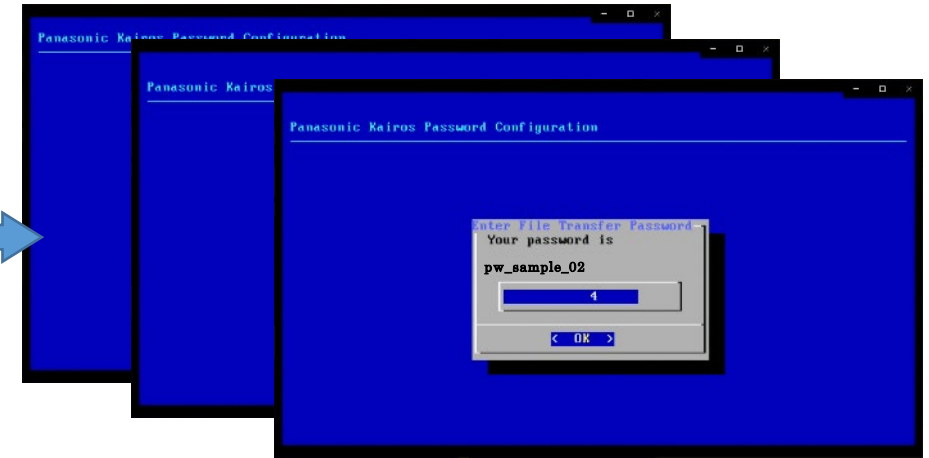
The display of the monitor screen of KAIROS Core is explained below.
Please operate with a USB keyboard connected to KAIROS Core.



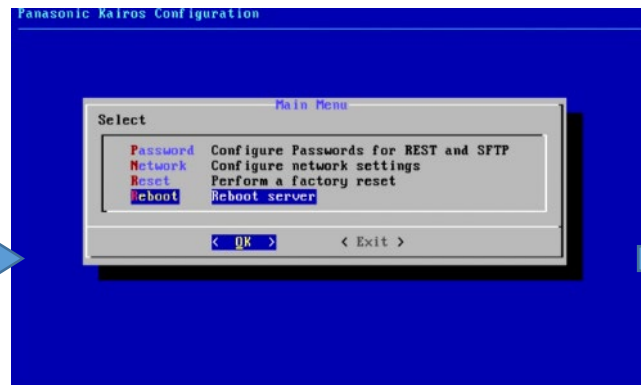
7. Confirm your password (displayed for 5 seconds), "OK".

Repeat steps 4-7 to set both "REST" and "FILE".

- Select settings REST / FILE
- Enter your password
- Re-enter your password
- Confirm your password



8. Set both "REST" and "FILE".
After completing both settings,
select "SAVE" and press the Enter key.



9. Select "Reboot" and press Enter.

About 3 minutes after the reboot starts,
KAIROS Core will start normally, and the
monitor screen will return to the MV display.

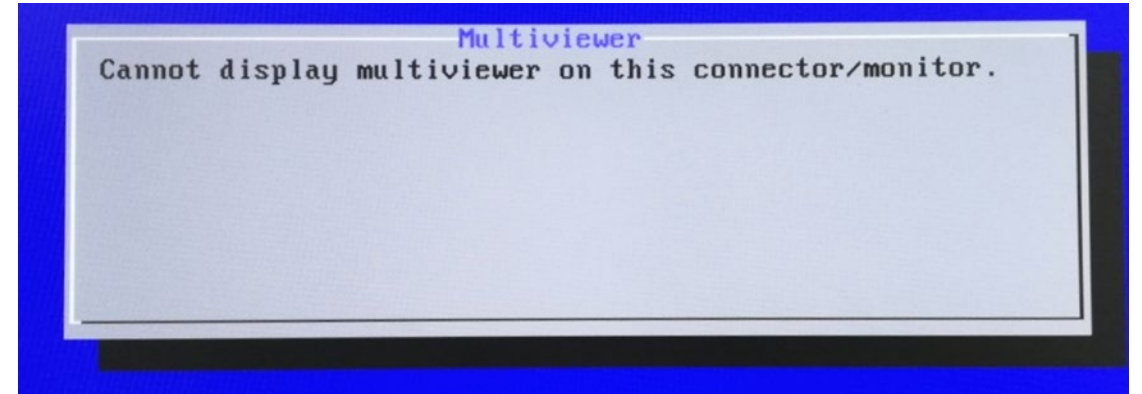
KAIROS Core / KAIROS Control Update

Note

If you set the system settings / system frequency to 50Hz, please use a monitor that supports 50Hz signal input.

The following message is displayed, and the screen is not displayed.

“Cannot display multiviewer on this connector/monitor.”



11. The KAIROS Core update is now complete.
Please check the version.

12. The update is complete when both the KAIROS core and KAIROS Control updates are complete.

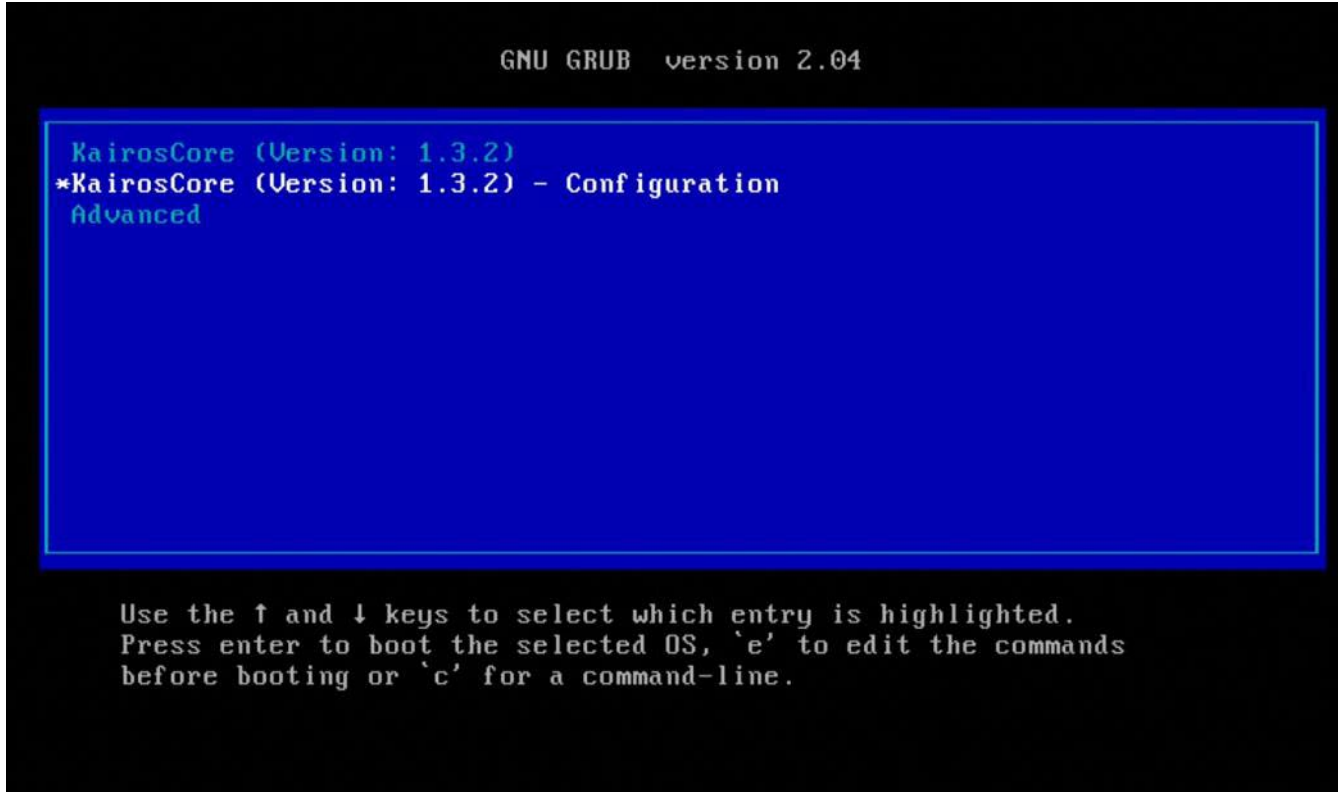
If you have updated only one of them, go back to top of Step 3 and update the other one.

Password reset

KAIROS Core Password reset

You can reset your password as needed.

The display of the monitor screen of KAIROS Core is explained below.
Please operate with a USB keyboard connected to KAIROS Core.



```
GNU GRUB version 2.04

KairosCore (Version: 1.3.2)
*KairosCore (Version: 1.3.2) - Configuration
Advanced

Use the ↑ and ↓ keys to select which entry is highlighted.
Press enter to boot the selected OS, 'e' to edit the commands
before booting or 'c' for a command-line.
```

After starting KAIROS Core, the above screen will be displayed.

This screen will be displayed for about 2 seconds, so press the “down arrow key” once during that time.

Move the cursor on “Configuration”. After that, follow the procedure for setting the administrator password.

Initialization

Initialization

The following items can be initialized to the factory default settings.

When performing initialization, make a backup beforehand if necessary and work carefully.

Initialize mode (for resetting items)

- User

- MEDIA (Still, Font, GFX, RAM, Clip, Audio, LUT)

- LOG

- Environment files settings

- Default production setting

- SystemSettings

- System

- Passwords (REST, FILE)

- PTP settings

- Network settings

- DNS setting files

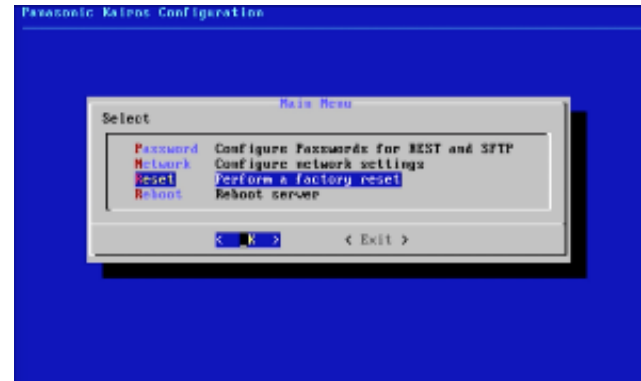
- In addition, all items in the above "User" mode

Initialization

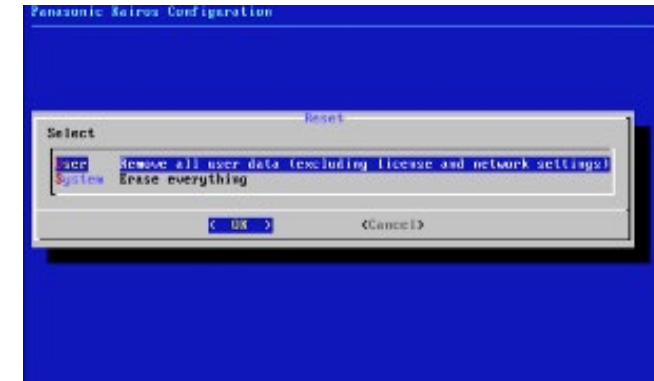
Initialization procedure: **The display of the monitor screen of KAIROS Core is explained below. Please operate with a USB keyboard connected to KAIROS Core.**



1. Select "Configuration" on screen, after starting KAIROS Core



2. Select "Reset" on the menu, and press Enter.

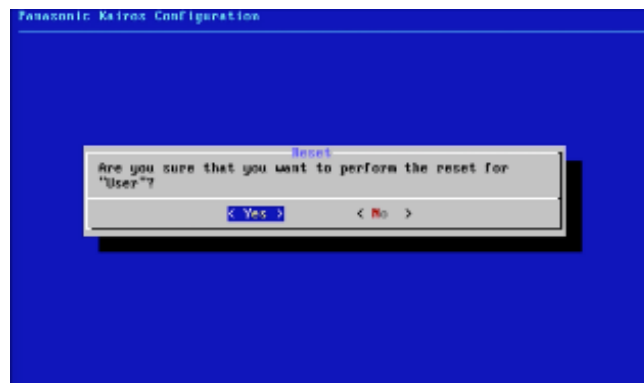


3. Select initialize mode

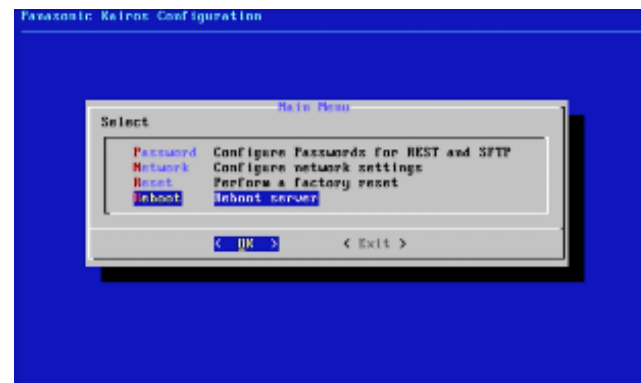
User : Initialize all items of the User mode*

System : Initialize all items of the System mode*

*Please refer the previous page for details.



4. Select Yes on the confirmation screen and press Enter



5. Select "Reboot" and press Enter.
KAIROSCore will restart and be ready for use.