

## ■ Firmware Update

This manual is to explain the procedure for updating the AU-XPD1 firmware on Windows.

## ■ Operating Environment

Please perform this update for AU-XPD1 in the following environment.

OS :

Windows 7 Professional, Ultimate (SP1) 32bit/64bit

Windows 8 32bit/64bit

Windows 8.1 32bit/64bit

## ■ Preparation before Updating

Before updating the AU-XPD1 firmware, please make sure of the following points.

<Firmware Download>

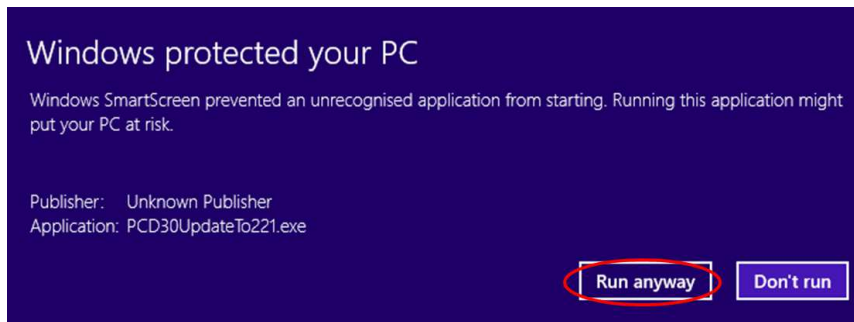
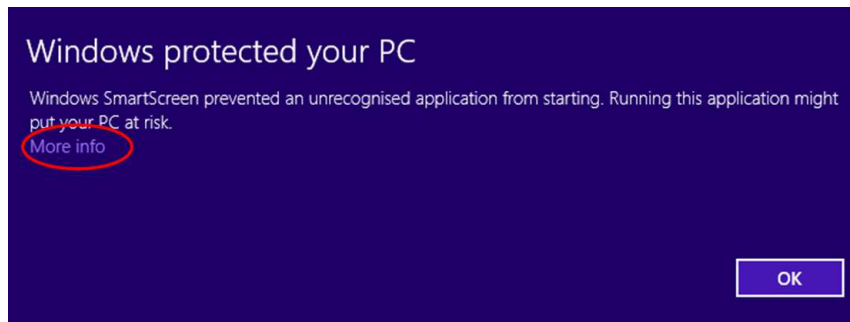
- Download AU-XPD1 latest firmware update file "VSI6108A.zip" for Windows from the website below and put it in any folder in your PC.  
<http://pro-av.panasonic.net/en/> ->Service and Support ->Software Download -> P2
- If your PC is connected with two or more AU-XPD1 memory card drives, the update cannot be performed correctly. Be sure to perform the update with only one AU-XPD1 drive connected.
- Disable the standby / hibernate setting of your PC.
- If P2 cards are in the slots of AU-XPD1, take them all out.
- AU-XPD1 require the power supply with USB3.0 or AC Adaptor.

## ■ Firmware Update Procedure

\* Update must be performed by a user with administrator rights.

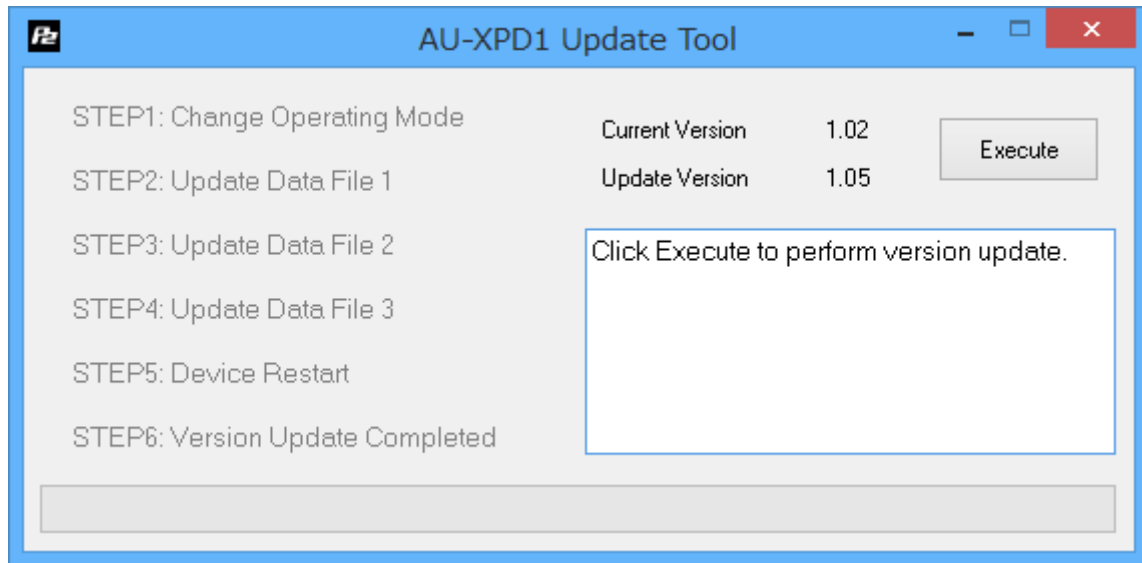
1. Double-click the downloaded "VSI6108A.zip" file to extract it, and the "VSI6108A" folder will appear. So copy this folder to an appropriate location.
2. Double-click the "Xpd1UpdateTo105.exe" file in the "VSI6108A" folder to start the update. On Windows 7 and Windows 8, the confirmation dialog for access request will be displayed. So click [OK] to proceed.

If the message "Windows protected your PC" appears in Windows 8/8.1, click "More info" and select "Run anyway" on next page.

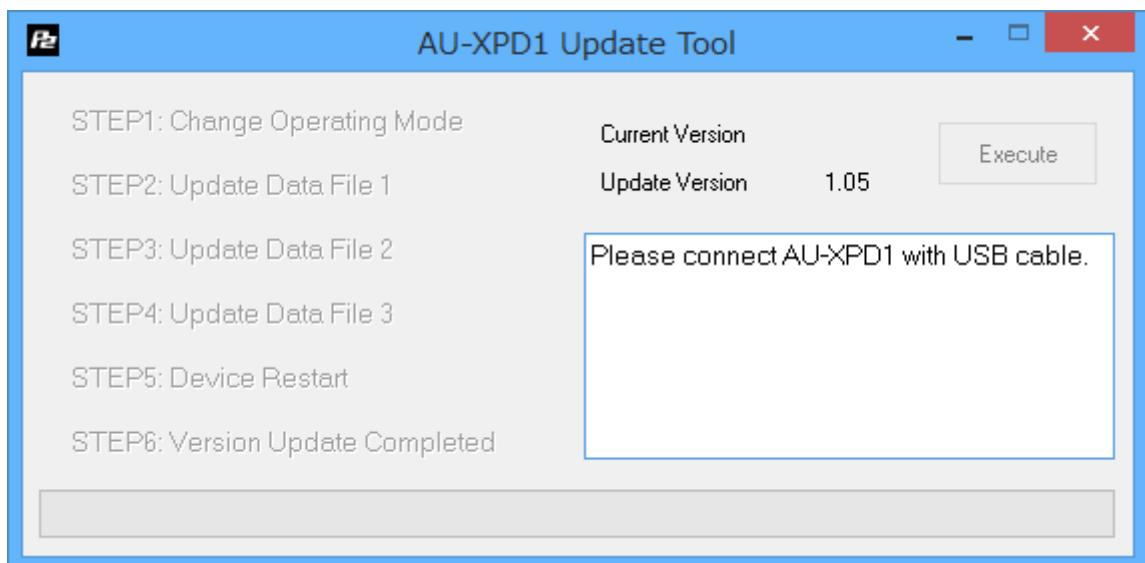


## AU-XPDI Update procedure(Windows)

When AU-XPDI is recognized correctly, following screen is displayed. Please proceed to the next step.  
(Version numbers below are for reference purposes only.)



If the screen is displayed as follows, AU-XPDI is not recognized. Please check the connection with PC again.



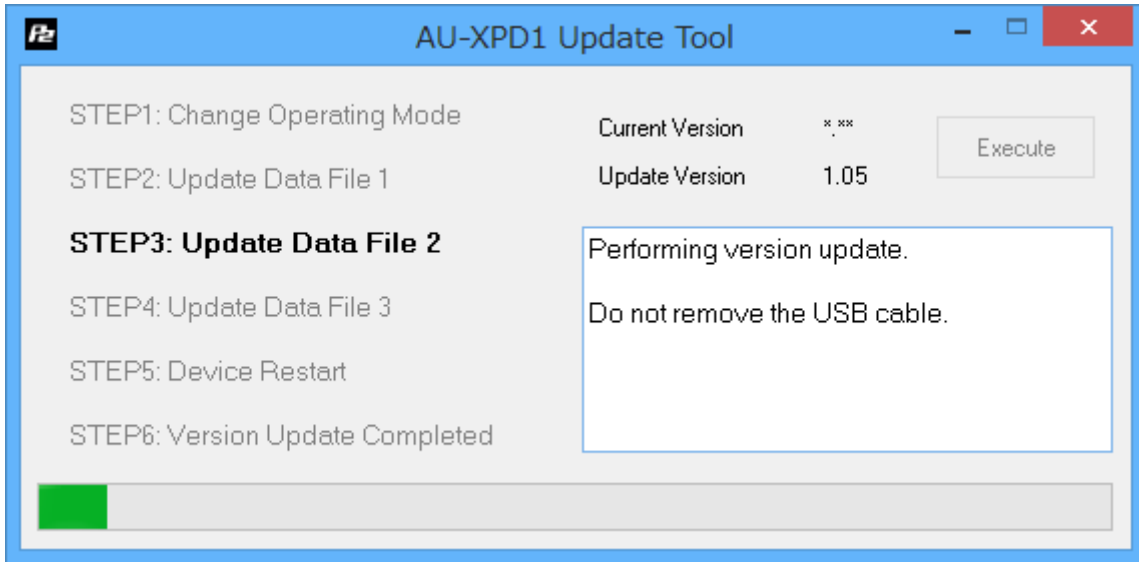
3. Click the [Execute] button to start the update.

It takes about a few minutes to complete the update.

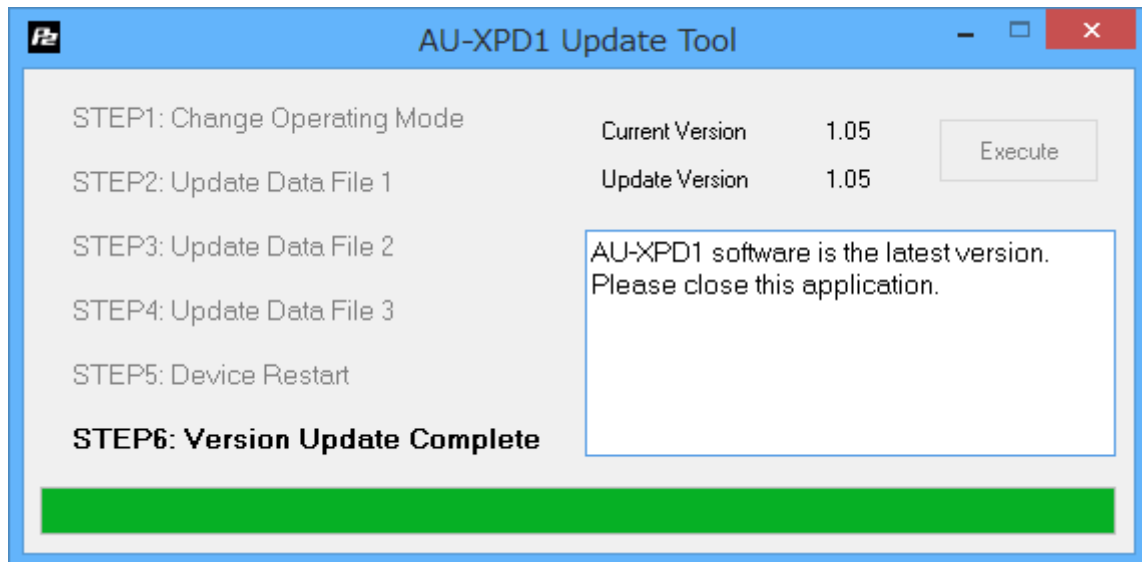
\* Once the update is started, it cannot be canceled in the middle of the process.

\* While the update is in progress, please do not turn off your PC or AU-XPDI, or unplug USB cable.

\* When the AU-XPDI indicates disconnection for a few seconds, this state is proceeding normally. It does not indicate problems.



4. When the update is completed, the following screen will be displayed as below.

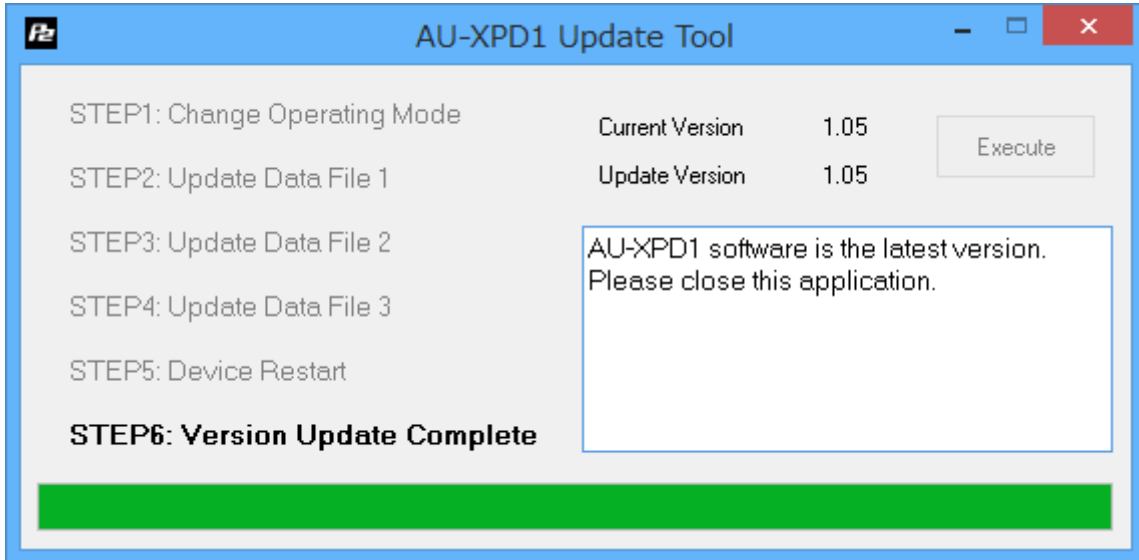


5. With these steps, the update will be completed.

## ■ Confirmation of Firmware Version

When you need to confirm that AU-XPDI has been correctly updated, please execute the "Xpd1UpdateTo105.exe" file again.

If it has been updated correctly, the following screen will be displayed.




If it has not been updated correctly, please perform the update from the beginning again.

## ■ Error While Updating

If an error occurs for some reason while updating, a message such as the following will be displayed in the window and the update process will be stopped.

- + Cannot communicate with AU-XPDI. Ending process.
- + Error during version update, Ending process.
- + File transfer failed. Ending process.
- + File write failed. Ending process.

If the update is stopped, please follow the procedure below to perform the update again.

1. Press  button at the upper right of the window to terminate updating.
2. After turning your PC off, turn AU-XPDI off and on again. Then restart your PC.
3. Double-click the "Xpd1UpdateTo105.exe" file to start the application.
4. After it is confirmed that AU-XPDI is recognized, press the Execute button to perform the update.

When the following symptoms occur, please contact your nearest service center.

- AU-XPDI is not recognized.
- The update is not completed correctly even if you have retried several times.