

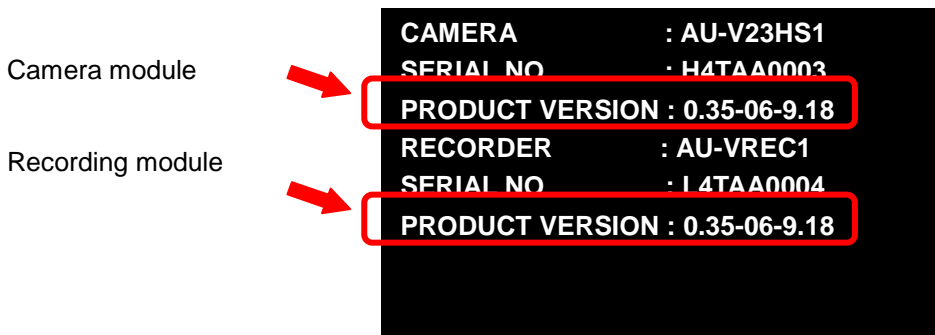
Firmware update procedure

Recording module: AU-VREC1,

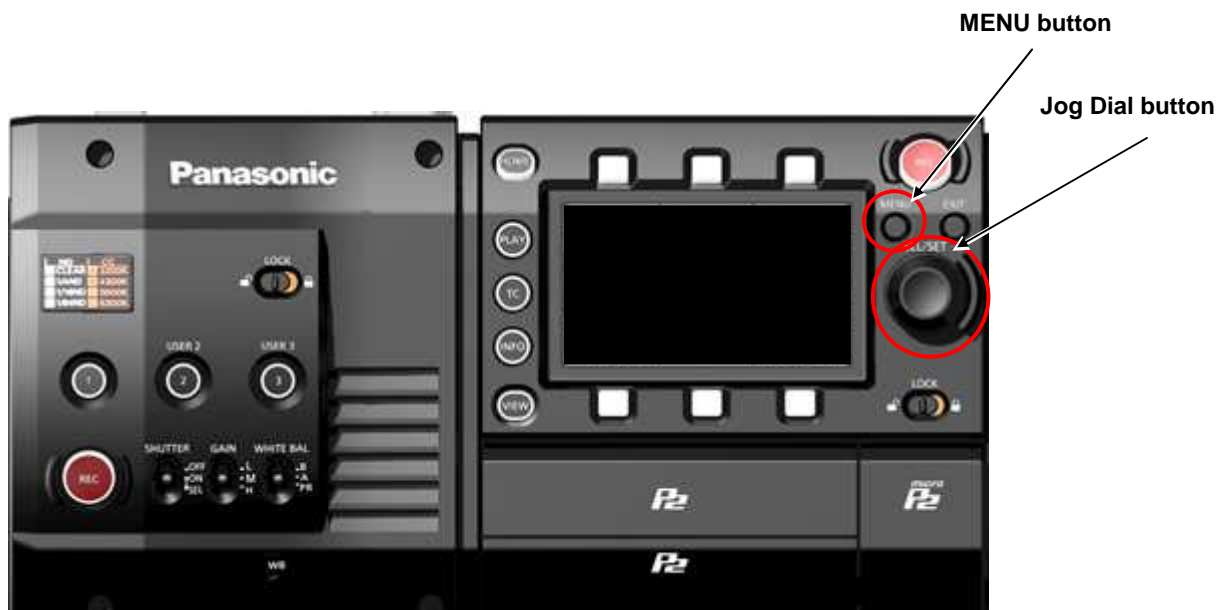
Camera module: AU-V23HS1, AU-V35C1

1. How to check firmware version

1. Connect Camera module to Recording module. Switch ON the power of the camera recorder.
2. Press **MENU** button. Select "> **SYSTEM SETTINGS** >**INFORMATION** >**VERSION**" to display the current version with the **Jog Dial** button.



Version display example



NOTE: The firmware versions of the camera module and the recording module must match to operate this unit. Firmware of the camera module can be updated only when the recording module is connected.

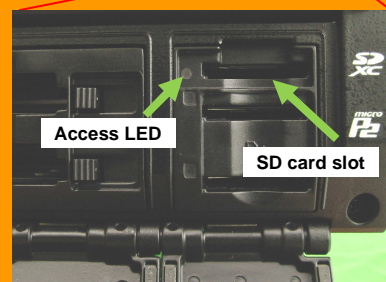
2. Preparation

Prepare following equipment and a firmware package prior to update.

Name	Qty	Remark
SD memory card	1	MAX 64GB MIN 256MB Note: microP2 card can also be used as substitution for SD cards but the card has to be formatted as SD CARD in the SD card slot in advance.
Firmware package (VSI****.zip)	1	Can be downloaded at: http://panasonic.biz/sav/pass_e
AC adaptor	1	
Computer (PC/Mac)	1	Needed for downloading, unzipping, copying firmware package

⚠ Important: Please read before performing update:

- For updating, it is necessary to connect Camera module to Recording module.
- Update work may take approximately 60 minutes, use secure power supply (AC adaptor), unexpected shutdown while in update may cause an unrecoverable failure.
- Do NOT eject SD memory card while update is in progress (while access LED blinks), interrupting communication between SD card and equipment may cause unrecoverable failure.



3. Updating firmware

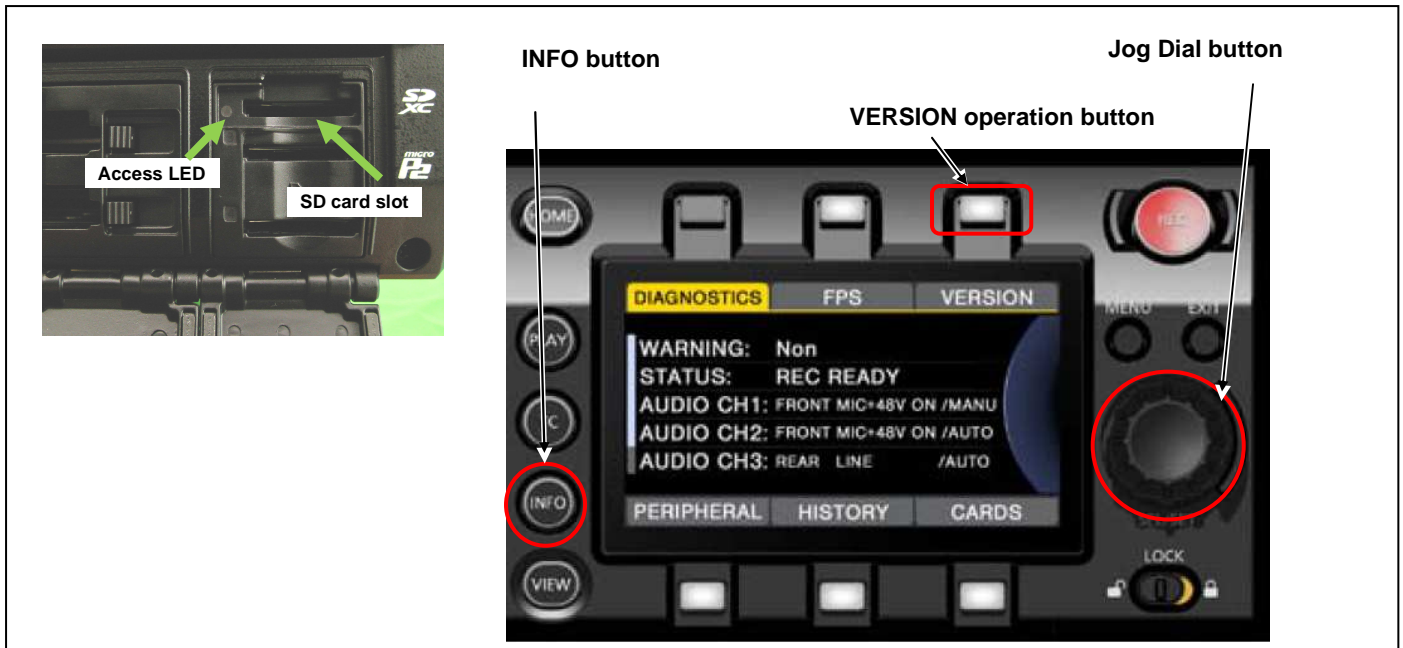
[Preparation]

1. Insert an SD memory card into the SD card slot (NOT microP2 card slot) on the unit.
2. Format the SD card (MENU : SYSTEM SETTINGS > CARDS/MEDIA > FORMAT CARD > SD CARD)
Visit Panasonic professional video support website <http://panasonic.biz/sav/pass_e> and download "vsi*****.zip" firmware package.
3. Extract the ZIP package (you will see "PRIVATE" folder).
4. Mount the formatted SD card to the computer then copy the **"PRIVATE"** folder to the SD card.



[Perform update]

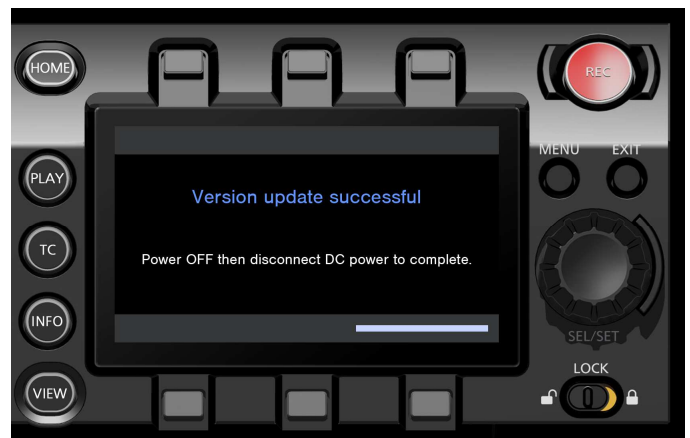
5. Insert the SD card into the SD card slot (NOT microP2 card slot) on the unit.
6. Disconnect the cable between the viewfinder and the camera body.
7. Press **INFO** button to display INFO screen. Press the operation button of **VERSION** and press the Jog Dial..



8. When "**UPDATE**" menu item appears, press the operation button of **UPDATE > OK**



9. Wait until the "Version update successful" dialog is displayed. It may take **approximately 60 minutes (Maximum)**.
10. Remove the SD card.
11. Switch OFF the power, and disconnect and connect DC power > switch ON the power to complete.
12. Make sure the firmware version.



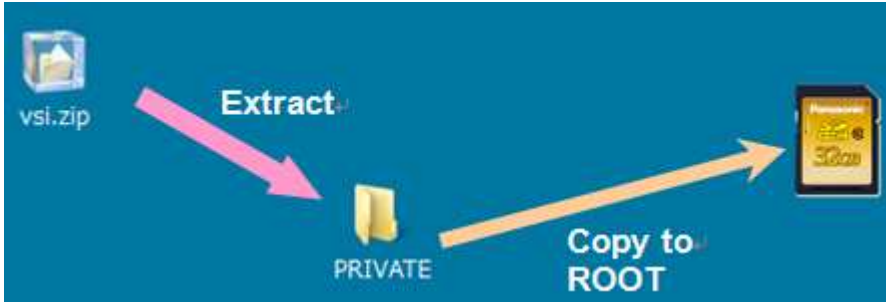
MENU:
SYSTEM SETTINGS > INFORMATION > VERSION

4. Troubleshoot

1. "UPDATE" menu item does not appear.

It may happen in following cases;

- When package file or copied location are NOT correct ("PRIVATE" folder was not copied to the upper directory of the SD card).



2. VERSION UPDATE ERROR! Screen is displayed!

This error will be happened in following case;

- When firmware package used is for other products. → Check if the package is for the right product.
- When firmware package is corrupted. → Download the firmware package and try again.

