

AW-HE60 Firmware Upgrade Procedure

Please be sure to read this first.

The update of AW-HE60 camera is performed via a network from Web setting screen on PC.

There might be accidents in the process of updating such as changing the camera settings and others by mistake. Please perform the update after taking every situation into careful consideration.

It is recommended that the current settings should be noted down in advance.

◆[Disclaimer of warranty]

IN NO EVENT SHALL Panasonic Corporation BE LIABLE TO ANY PARTY OR ANY PERSON, EXCEPT FOR REPLACEMENT OR REASONABLE MAINTENANCE OF THE PRODUCT, FOR THE CASES, INCLUDING BUT NOT LIMITED TO BELOW:

- (1) ANY DAMAGE AND LOSS, INCLUDING WITHOUT LIMITATION, DIRECT OR INDIRECT, SPECIAL, CONSEQUENTIAL OR EXEMPLARY, ARISING OUT OF OR RELATING TO THE PRODUCT;
- (2) PERSONAL INJURY OR ANY DAMAGE CAUSED BY INAPPROPRIATE USE OR NEGLIGENT OPERATION OF THE USER;
- (3) UNAUTHORIZED DISASSEMBLE, REPAIR OR MODIFICATION OF THE PRODUCT BY THE USER;
- (4) INCONVENIENCE OR ANY LOSS ARISING WHEN IMAGES ARE NOT DISPLAYED, DUE TO ANY REASON OR CAUSE INCLUDING ANY FAILURE OR PROBLEM OF THE PRODUCT;
- (5) ANY PROBLEM, CONSEQUENTIAL INCONVENIENCE, OR LOSS OR DAMAGE, ARISING OUT OF THE SYSTEM COMBINED BY THE DEVICES OF THIRD PARTY;
- (6) ANY INCONVENIENCE, DAMAGES OR LOSSES RESULTING FROM ACCIDENTS CAUSED BY AN INADEQUATE INSTALLATION METHOD OR ANY FACTORS OTHER THAN A DEFECT IN THE PRODUCT ITSELF;
- (7) LOSS OF REGISTERED DATA CAUSED BY ANY FAILURE;
- (8) ANY DAMAGE OR CLAIMS DUE TO LOSS OR LEAKAGE OF IMAGE DATA OR SETTING DATA SAVED ON THIS UNIT OR ON A MEMORY CARD OR COMPUTER.

◆[Network security]

As connected to a network, your attention is called to the following security risks.

- (1) Leakage or disclosure of information transmitted via this unit
- (2) Unauthorized use of this unit by a third person with malicious intent
- (3) Interference or stoppage of this unit by a third person with malicious intent

It is your responsibility to take sufficient network security measures such as those described below to protect yourself against the above risks.

+ Use this unit in a network secured by a firewall, etc.

+ If this unit is used in a system with a computer connected, make sure that checks for and removal of computer viruses and malicious programs are implemented regularly.

+ Do not install the unit in a location where the unit, cables, and other parts may be easily damaged.

1. Preparation

< Required PC environment >

<CPU> Intel Core2 DUO 2.4 GHz or faster recommended

<MEMORY> 512 MB or more,

When using Windows 7: 1 GB [32 bits] or 2 GB [64 bits] or more

<Network function>10Base-T or 100Base-TX port 1

<Image display function> Resolution: 1024 768 pixels or more, Color generation:True Color 24 bits or more

<Supported OS and Web browser>

Windows 7 Professional 32/64-bit (*1) , IE 8.0 (*2),IE9.0(*2)

Windows XP (*3) Home Edition SP3/ Professional Edition SP3 , IE 8.0(*2)

*1) This cannot be used in the Windows XP compatibility mode.

*2) This cannot be used with the 64-bit version of IE 8.0.

*3) The Windows XP Professional x64 Edition is not supported.

< Copy to file for update >

1. Download the file for the update from "Support " web site.

Click next to "Service and Support" tab. <http://pro-av.panasonic.net/en/>

AW-HE60S or AW-HE60H

2. Copy the file "*****.zip" to hard disk of your PC and extract the file.

The folder contains the following three software programs for upgrading.

Do not change these filenames.(The software version is entered in the [***] part.)

Ensure that both software programs are upgraded without fail.

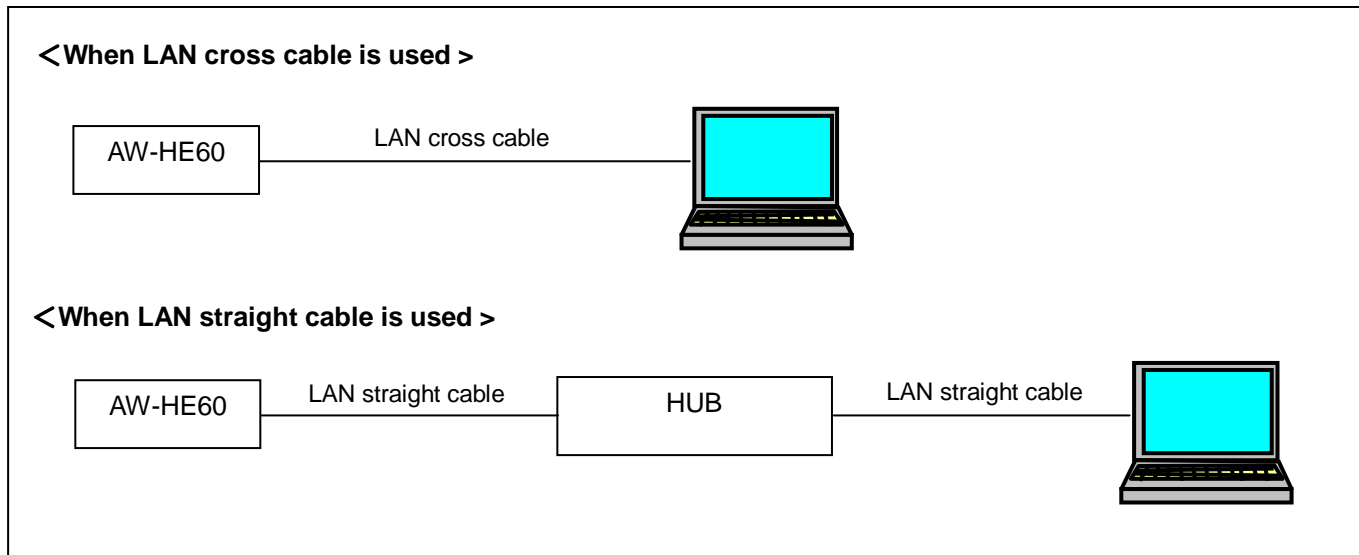
AW-HE60**H**

File Name	Firmware
VSI5640*.bin	CPU Software / Camera Main PLD / Camera
VSI5642*.img	CPU Software / Network PLD / Output
VSI5641*.eep	EEPROM

AW-HE60**S**

File Name	Firmware
VSI5640*.bin	CPU Software / Camera Main PLD / Camera
VSI5643*.img	CPU Software / Network PLD / Output
VSI5641*.eep	EEPROM

< Connection AW-HE60 to PC >



The LAN cross cable is used when connecting a personal computer directly to the unit's LAN connector for IP control, and the LAN straight cable is used when making the connection through a switching hub.

Select an IP address for the personal computer within the private address range while ensuring that it is different from the address of the unit. Set the subnet mask to the same address as the unit.

Example

AW-HE120	192.168.0.10
PC	192.168.0.100

Unit's IP address and subnet mask (factory settings)

IP address : 192.168.0.10

Subnet mask : 255.255.255.0

Range of private addresses: 192.168.0.1 to 192.168.0.254

2. Update procedure

The update of AW-HE60 camera is performed via a network from Web setting screen on PC. There might be accidents in the process of updating such as changing the camera settings and others by mistake. Please perform the update after taking every situation into careful consideration.

It is recommended that the current settings should be noted down in advance.

1. Turn on the AW-HE60, Check PC connecting a local network.



2. Start the Web browser, and access following URL.

http://192.168.0.10

Note: The IP address set as AW-HE60 depending on a customer's employment may have been changed.

3. The following Web setting screen is displayed. Click Setup button.

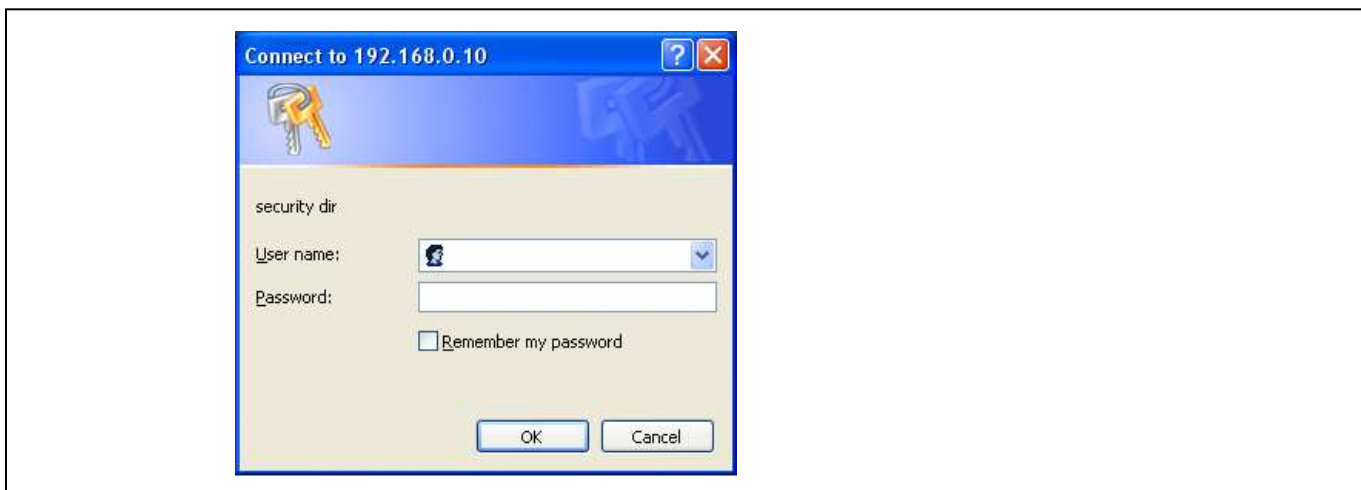


4. Clicking **Setup** button, the following screen is displayed. Click **OK** button on the screen, setup menu is displayed.



NOTE:

When the Setup button is clicked for the first time, the following login screen is displayed.

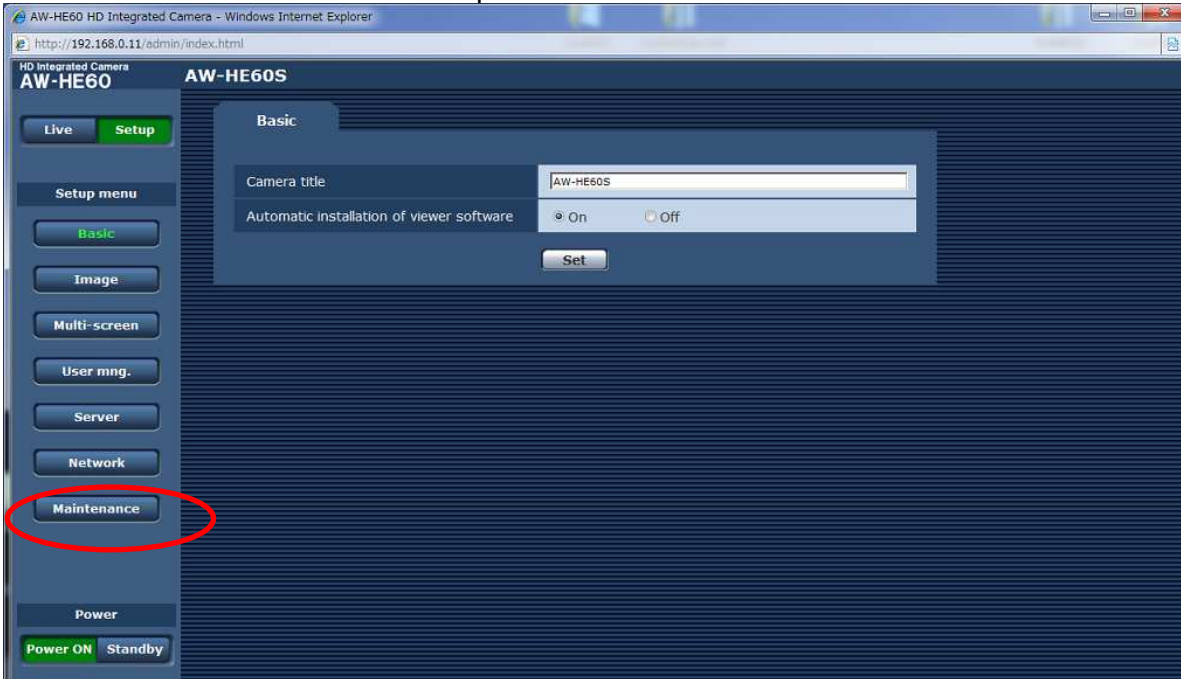


Input the following default values. Clicking OK button after inputting values, the message screen shown in step 4 is displayed.

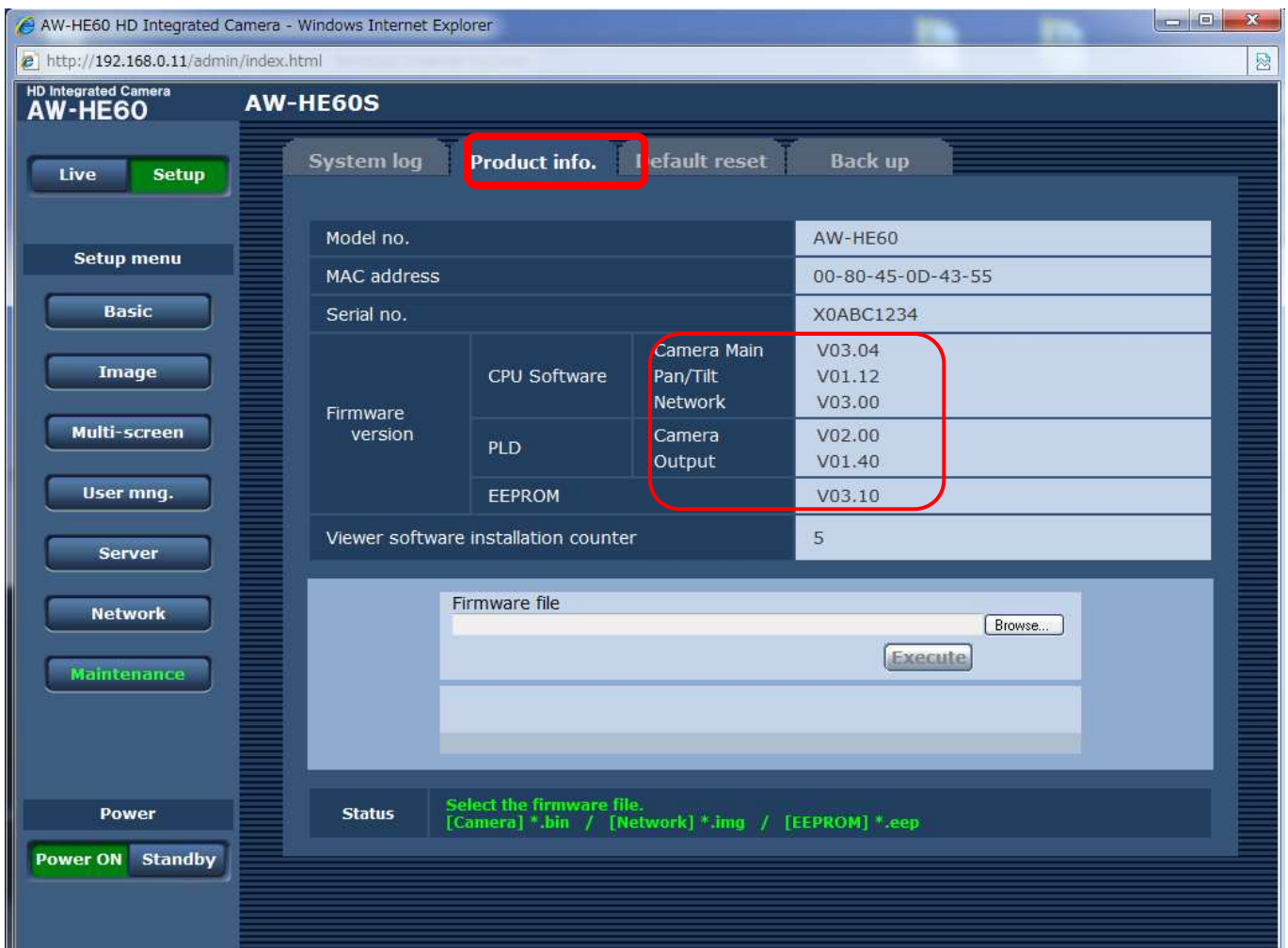
User name	admin
Password	12345

NOTE: The user name and password which are set as AW-HE60 depending on a customer's employment may have been changed. In that case, a confirmation is required.

5. Select the "Maintenance" in Setup menu. Click Maintenance button.



6. The **Maintenance** setting screen is displayed. Clicking **Product info.** tab, Update screen is displayed. The version of firmware can be confirmed.



Select the software program (*.bin, *.img, *.eep) whose version is to be upgraded.

AW-HE60H

Firmware		File Name	Remark
CPU Software	Camera Main	VSI5640*.bin	
	Pan/Tilt	-	
	Network	VSI5642*.img	
PLD	Camera	(VSI5640*.bin)	This item and the item "CPU Software / Camera Main" is updated together.
	Output	(VSI5642*.img)	This item and the item "CPU Software / Network" is updated together.
EEPROM	Frontend	VSI5641*.eep	

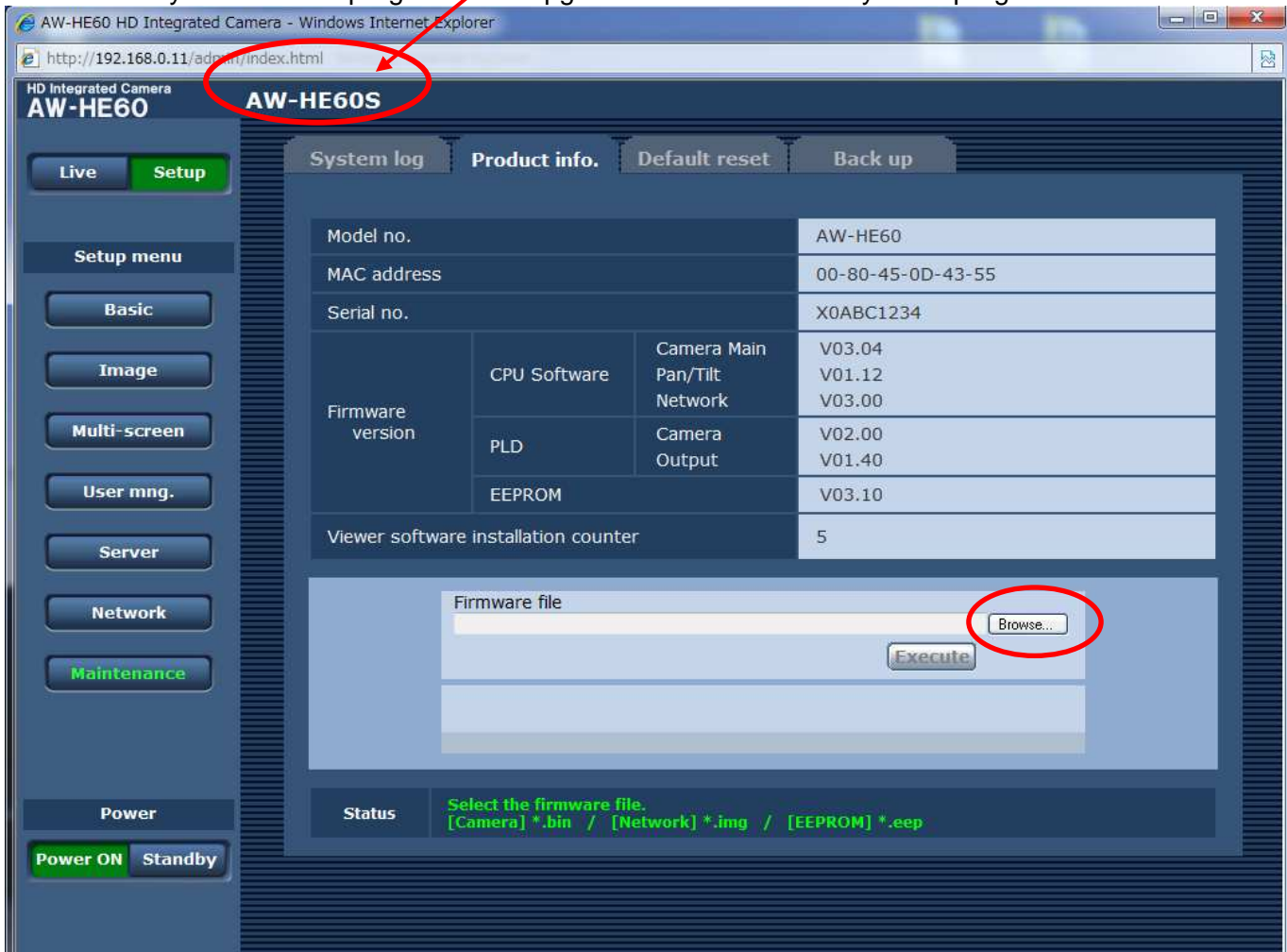
AW-HE60S

Firmware		File Name	Remark
CPU Software	Camera Main	VSI5640*.bin	
	Pan/Tilt	-	
	Network	VSI5643*.img	
PLD	Camera	(VSI5640*.bin)	This item and the item "CPU Software / Camera Main" is updated together.
	Output	(VSI5643*.img)	This item and the item "CPU Software / Network" is updated together.
EEPROM	Frontend	VSI5641*.eep	

NOTE: Each software of an update procedure is the same. In this manual, the screen at the time of selecting CPU Software / Camera Main is described.

There is the difference in Network software between HDMI model (AW-HE60H) and SDI model (AW-HE60S). Please do not make a mistake in selecting. Model type of your AW-HE60 camera is displayed at the upper part of Web setting screen.

The file and folder names must not include any spaces or full-size characters.
 Select only the software program to be upgraded: Do not select any other program.



7. Click **Execute** button.

The screenshot shows the 'AW-HE60S' web interface. The 'Product info.' tab is active, displaying a table of system information:

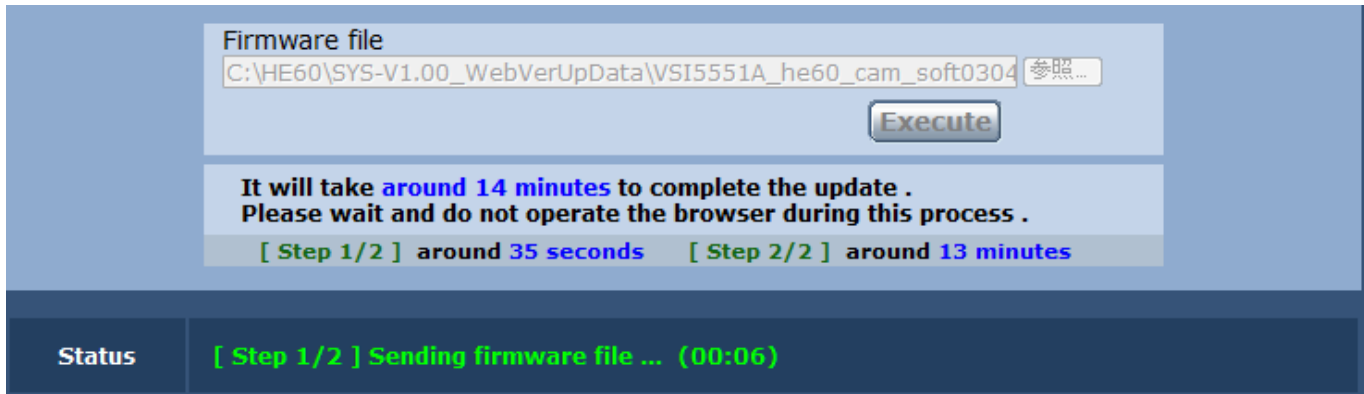
Model no.		AW-HE60	
MAC address		00-80-45-0D-43-55	
Serial no.		X0ABC1234	
Firmware version	CPU Software	Camera Main	V03.04
		Pan/Tilt	V01.12
		Network	V03.00
	PLD	Camera	V02.00
		Output	V01.40
	EEPROM		V03.10
Viewer software installation counter		5	

Below the table, the 'Firmware file' path is shown: C:\HE60\SYS-V1.00_WebVerUpData\WSI5551A_he60_cam_soft0304. The 'Execute' button is circled in red. A message below the button states: 'It will take around 14 minutes to complete the update. Please wait and do not operate the browser during this process. [Step 1/2] around 35 seconds [Step 2/2] around 13 minutes'. A status bar at the bottom says 'Status Press "Execute" button to start update.' A callout box points to the update time information with the text: 'The time which the updating takes is displayed.'

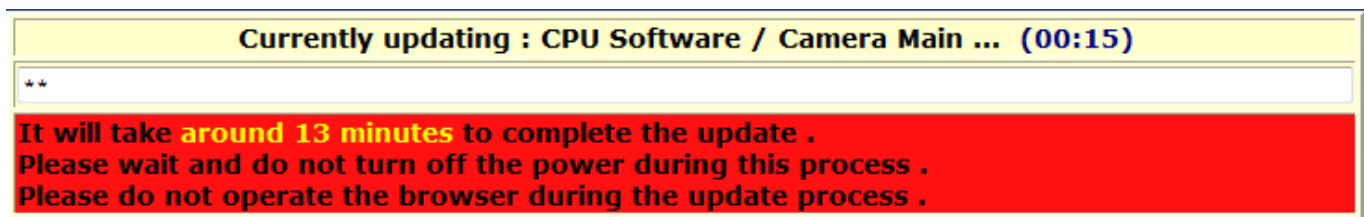
8. Click **Execute** button. The following message is displayed.



9. Clicking OK button, the update starts. The following display is the status during sending firmware file data from PC to AW-HE60.



10. When sending the file is completed, the display is changed to the following screen. (In the example of the following figure, CPU Software of Camera Main is been updating.)



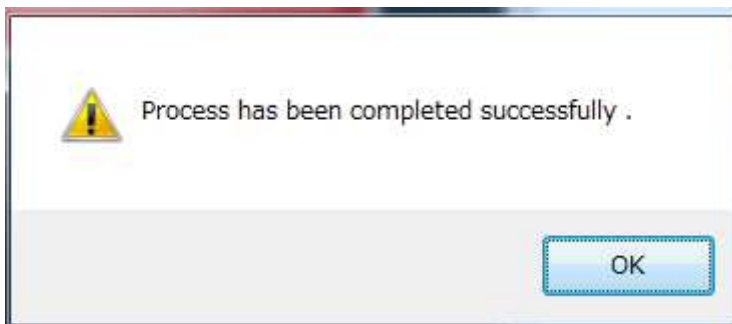
NOTE:

The power of the camera automatically OFF and ON (The update is continuing). The update is not completed. While the software program is being upgraded, do not perform any operations whatsoever until the progress bar display is cleared.

If any of the following operations are performed, the software program will fail to be upgraded, making it impossible for the AW-HE60 to start up properly.

- X When a screen other than the [Upgrade] screen and progress bar is accessed**
- X When the Web browser which displays the [Upgrade] screen and progress bar is closed**
- X When the network connection between the personal computer and AW-HE60 is cut off**
- X When the power of the personal computer or AW-HE60 is turned off**

11. The progress bar disappears when the update is completed, and the following message is displayed. Clicking OK button, WEB Live screen of step 3 is displayed.

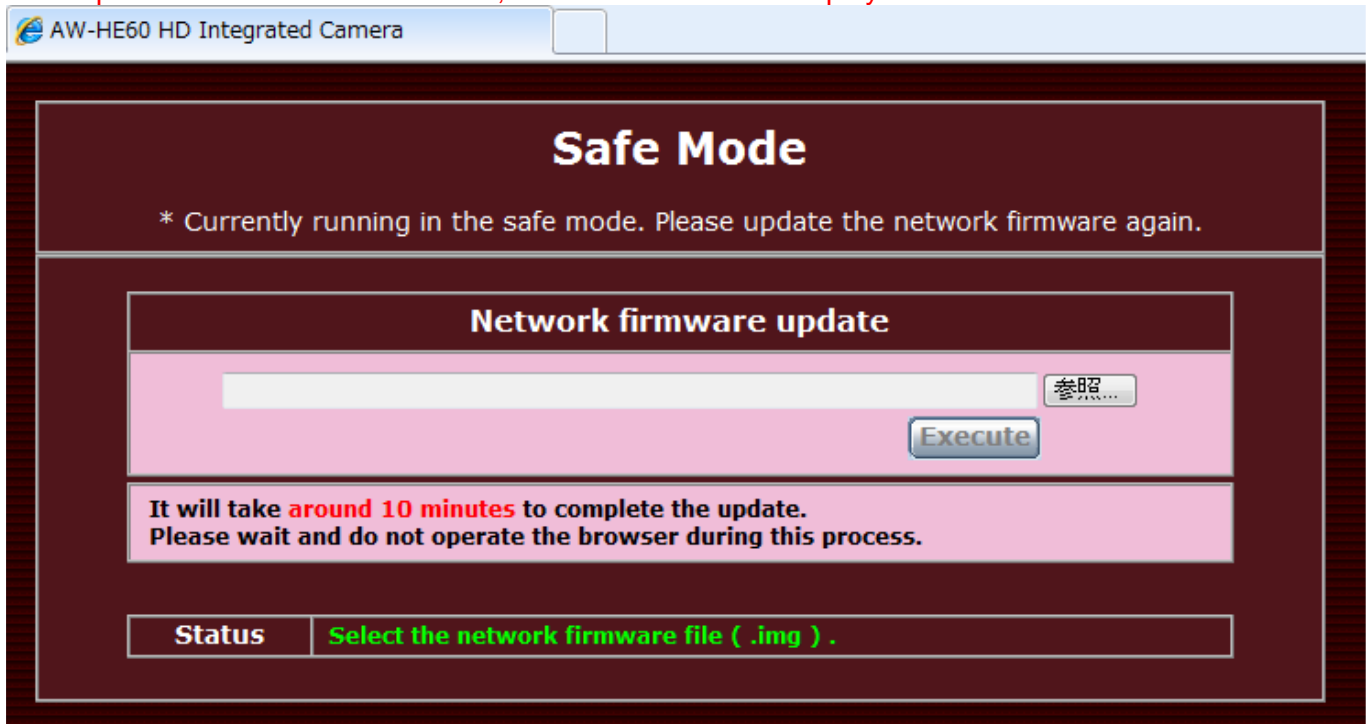


Repeat the procedure to update every software program that needs updating.

Failure in updating

If the update of Camera Main and EEPROM software fails, please update again.

If the update of Network software fails, Safe Mode screen is displayed as follows.



Select the file of Network software and perform the update again.

Click Browse button to open the file selection screen.

Click Execute button to start the update. Please refer to the procedure from Step9.

3. Confirm update

The version of firmware can be confirmed. Please refer to next page Step 1 to 6.

(Setup -> Maintenance -> Product Info.)

The AW-HE60H and AW-HE60S each have their own software program for upgrading the Network version.

If the versions are upgraded in the wrong combination, the following warning message will appear on the video output monitor every time the AW-HE60 starts up.

When the software program designed for the AW-HE60S has been upgraded in the AW-HE60H:

Network Firmware Error!

Please check Network Firmware Version for HDMI Model.

When the software program designed for the AW-HE60H has been upgraded in the AW-HE60S:

Network Firmware Error!

Please check Network Firmware Version for SDI Model.

When the versions are upgraded in the wrong, download and upgrade again using the correct combination.